

CRIMES AGAINST THE PERSON



CRIMES AGAINST THE PERSON

Definition

There is no common definition of Crimes Against The Person, however for the purpose of the Lambeth Community Safety Audit 2004 we have defined it as follows:

Crimes Against The Person includes any incident to the individual which has either a physical or psychological impact regardless of whether they are defined by behaviour, action, intent or motivation.

Crimes Against The Person includes:

- Murder
- Aggravated Bodily Harm (ABH)
- Grievous Bodily Harm (GBH)
- Rape
- Other Violence
- Common Assault
- Offensive Weapons
- Snatches
- Domestic Violence
- Racial Motivated Crime
- Homophobic Crime and Transphobic Related Crime
- Harassment
- Pick Pocketing
- Robbery Of The Person
- Other Sexual

and attempts of any of the above.

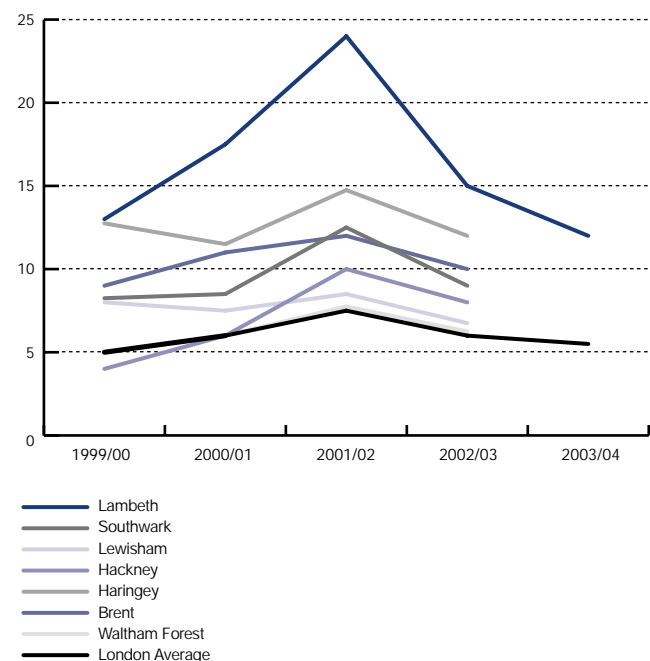
NOTE: The figures used are 'mappable ward totals' unless otherwise stated. These figures will differ from borough totals.

What do our statistics tell us?

- **Pan London Audit** data states that Violent Crime accounted for less than 20% of all recorded crimes in London, about 200,000 incidents a year. Domestic Violence and assaults accounted for 50% of those Violent Crimes. Hate Crime made up 9%, of these racial incidents comprised well over 90%. There were also over 10,000 crimes recorded involving firearms, real or otherwise in London
- **Lambeth Ward totals** of Crimes Against The Person have increased by 2.7% (431 offences) between FY2002-3 and FY2003-4
- In FY2003-4 11 murders took place in FY2003-4 compared to 15 in FY2002-3
- In FY2003-4 ABH increased by 10.6% (total of 2516 recorded incidents compared to 2274 in FY2002-3)

- In FY2003-4 there were 111 rapes or attempted rapes compared to 107 in FY2002-3. Coldharbour Ward recorded the highest levels (15 offences)
- In FY2003-4 recorded incidents of GBH increased by 28% (352 offences compared to 274 in FY2002-3). Coldharbour Ward recorded the highest levels (72 offences)
- In FY2003-4 there were 5977 crime related ambulance calls compared to 5241 in FY2002-3. The highest levels of calls were in Coldharbour, Vassall and Bishops wards
- In FY2003-4 recorded Violent Crime cost the borough £180 million (£185 million in FY2002-3 and £192 million in FY2001-2)
- Personal Robbery offences have decreased by 49% in the last three years (3167 less offences)
- Table 6 (below) shows the reduction in robbery offences compared to other London Boroughs that receive additional Neighbourhood renewal funding in order to achieve national floor targets

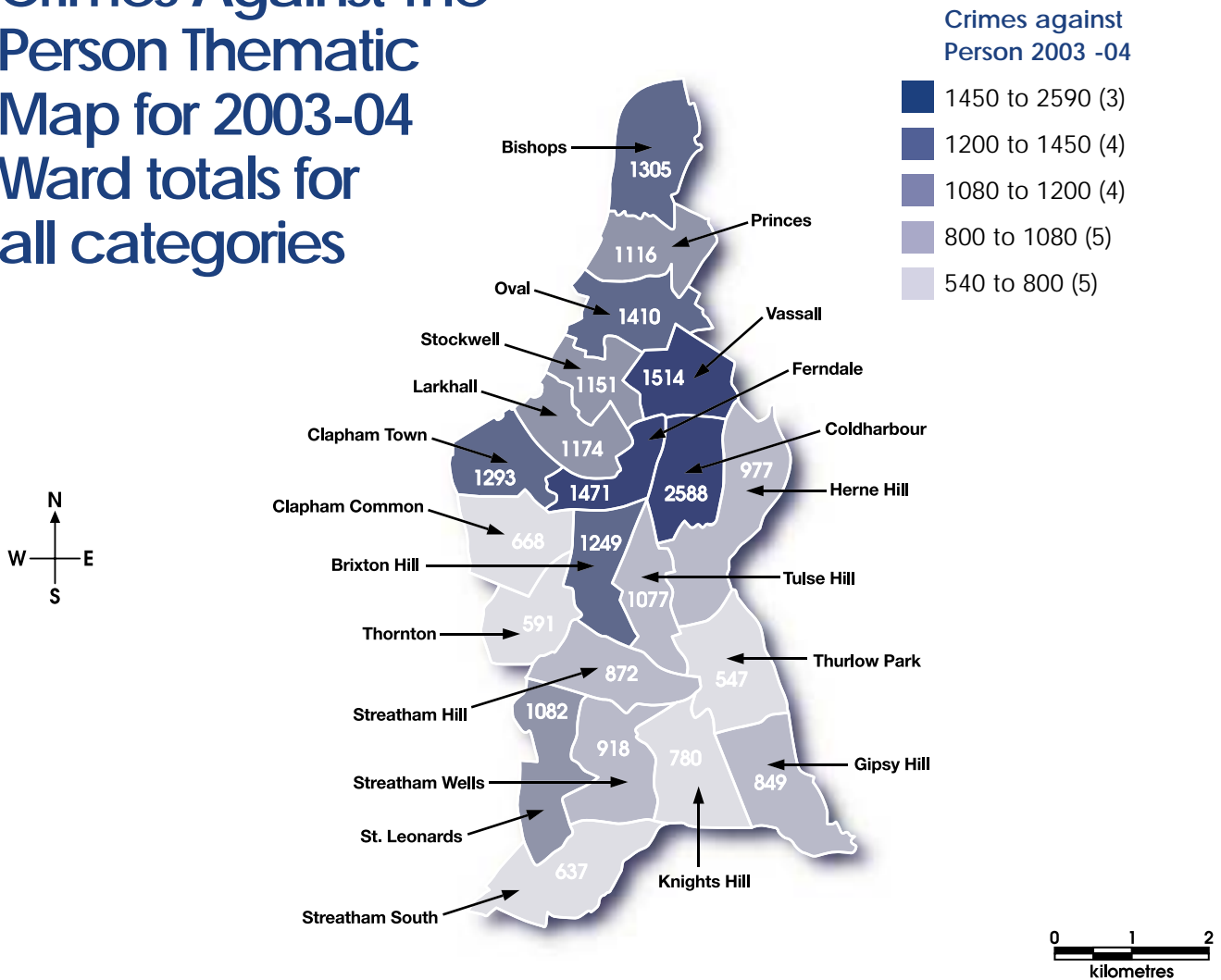
Table 6
Robbery offences per 1000 population. Lambeth and similar Local Authority Districts



Note: Figures available from the MPS website show that of all Total Notifiable Offences (TNOs) in FY2003-4, Crimes Against The Person accounts for 32% (this does not include Hate Crime).

There has been a 3.5% increase in Violence Against The Person in FY2003-4 compared to FY2002-3.

Map 4 Crimes Against The Person Thematic Map for 2003-04 Ward totals for all categories



- Our analysis of data from the MPS, Ambulance and Health services (admissions and deaths) showed that Coldharbour (11%), Vassall (7%) and Ferndale (6%) are the three priority wards (see map 4)
- When reviewing the crime maps for each of the priority areas, a recurring theme was the A23 (between Acre Lane and Oval Station)

- Recorded the highest level of ABH (302), GBH (72), and rapes (15) in FY 2003-4
- Recorded the highest level of crime related ambulance calls in FY2003-4 (583)
- Accounts for the highest level of Domestic Violence in Lambeth with 114 domestic violence specified investigations in FY2003-4

What makes up these areas?

Coldharbour

- Accounts for 12% of all Crimes Against The Person in Lambeth taken from the MPS data only for the FY2003-4 (16,399) compared to 13.6% in FY2002-3 (15,966)
- Showed a 6.3% decrease in recorded Crimes Against The Person from MPS data only in Coldharbour during FY2003-4 (1951) compared to FY2002-3 (2082)

Ferndale

- Accounts for 6.8% of all Crimes Against The Person taken from the MPS data only for FY2003-4, compared with 6.9% in FY2002-3
- Showed an increase of 2.6% in recorded crimes in Ferndale in FY2003-4 (1123) compared with FY2002-3 (1095)
- 50% of offences that occurred were Common Assault, Robbery Of The Person and ABH

Vassall

- Accounts for 6.4% of all Crimes Against The Person taken from MPS data only for FY2003-4 compared with 6.1% in FY2002-3
- Showed an increase of 8% in recorded Crimes Against The Person for Vassall in FY 2003-4 (1053) compared with FY2002-3 (975)

When do the incidents occur?

- For the borough as a whole there is a slight peak in offending during the summer months with the highest month being May
- Saturdays and Sundays recorded the highest levels of crimes against the person
- Saturdays recorded the highest level of ambulance responses to incidents of assaults with the highest between 21.00 and 03.00 hours
- There is a steady increase in offences throughout the day which peaks between 19.00 and 21.00 hours

Table 7
Chart showing seasonal trends in Crimes Against the Person, FY2003-2004

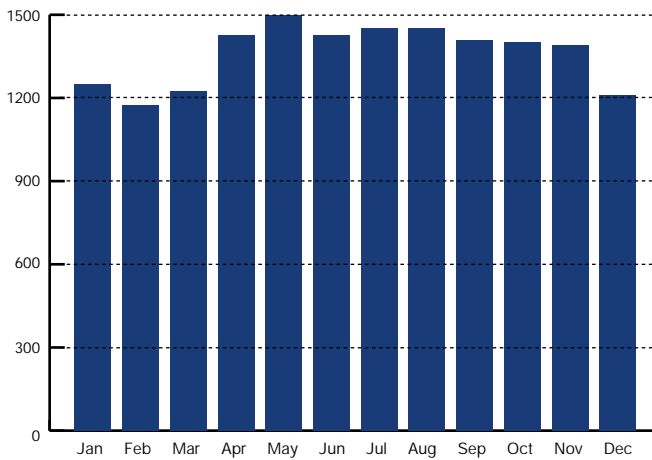


Table 8
Chart showing days of the week for Crimes Against the Person, FY2003-2004

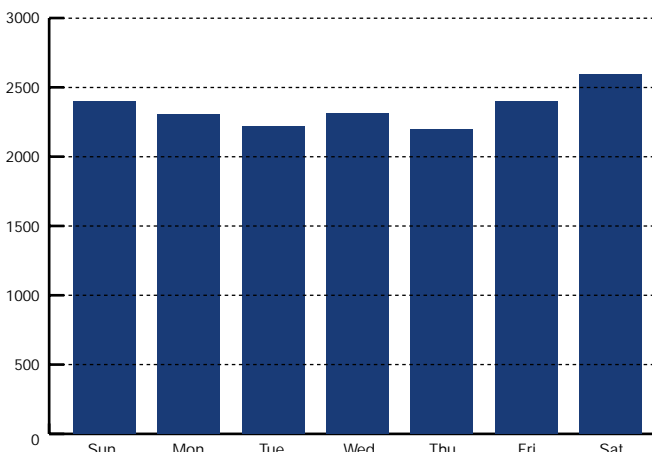
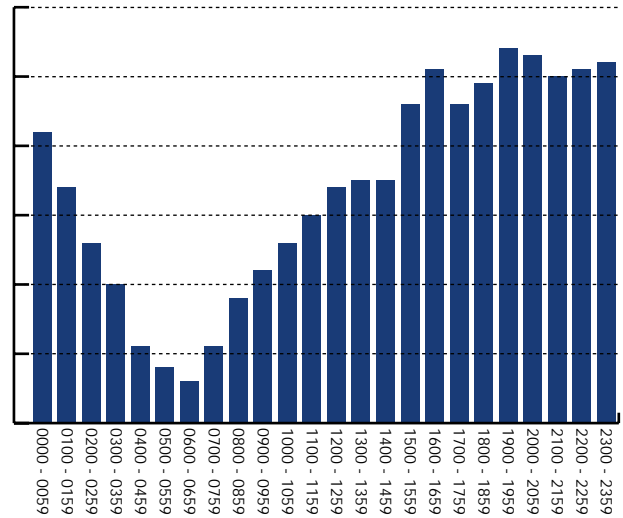


Table 9
Chart showing peak times for Crimes Against the Person, FY2003-2004



Who are our suspects and victims of Crimes Against The Person?

Looking at our three priority wards in more detail our analysis indicates:

Victims

- 1/3rd of the known victims are aged between 20 and 29 years
- 47% were male and 53% were female
- Of those where the ethnicity was known, 43% were white-skinned European and 43% were African-Caribbean. This indicates that our African-Caribbean community are over represented when compared to the population data for Lambeth as our African-Caribbean population is 25.8%
- There were 5818 cases referred to Victim Support in the calendar year 2003
- 88% of referrals were adults, 47% were male 53% were female. 48% of adults were classed as white-skinned European
- Referrals to Victim Support decreased by 27% in FY2003-4 compared to FY2002-3. There had been a change in the referral rules in this time

Suspect

- Of those known ages, 26% were between the ages of 15-19
- Of those where the sex is known, 86% were male
- Of those where the ethnicity is known, 81% were African-Caribbean

Gun related violence

- Patterns of Gun Crime peaked between 14.00 – 18.00 hours and 21.00 – 23.00 hours. Summer months and Christmas are key periods
- Within the six 'Trident' initiative boroughs in London, Lambeth had the highest number of incidents with 35. The closest comparison borough is Hackney with 27 incidents in FY2003-4
- In FY2003-4 there were 279 classified firearm offences recorded by the Police
- Suspects of Trident Offences are generally young black males aged between 16 and 25 years (*Tackling Gun Crime In London 2004-7*)
- Most victims of Serious Crime 'know' or 'know of' their attacker (*Tackling Gun Crime In London 2004-7*)

Domestic Violence

- National research tells us that it takes on average 35 incidents of domestic abuse before a victim reports it to anyone
- In FY2003-4 there were 1572 specified investigations of Domestic Violence recorded by the MPS, compared to 1591 in FY2002-3
- In FY2003-4 there were 4447 investigations that were flagged as being related to Domestic Violence
- Coldharbour ward had the highest numbers with (359 flagged and 139 specified investigations)
- Between May and August incidents of Domestic Violence increased
- Increases are noted before and after Christmas and the New Year in late December and January
- The main persistent area of concern is within the SW9 area incorporating Coldharbour Ward and Vassall Ward (see Map 5)
 - Both wards have the highest instances of separation between couples
 - Both wards have the highest number of lone parents with dependant children on the borough
 - Marriage is relatively low in these wards as compared to other wards in Lambeth
- 72% of victims of Domestic Violence are female
- 17% of victims are between 21 and 25 years
- 50% of victims are Black African Caribbean
- 86% of perpetrators are Black African Caribbean males
- In FY2003-4 27% of the total allegations flagged as Domestic Violence were repeats (3460 offences). These crimes were divided

between 1868 households, a mere 38 households made 6% or 222 of these allegations. Each had over eight domestic incidents within a one year period

Map 5
The hot spot for Domestic Violence in the borough based on MPS data



Homophobic and Transphobic Crime

Whilst the reported levels of Homophobic and Transphobic Crime are low in comparison to other categories of Crimes Against The Person, Lambeth records the highest level of this type of crime in London.

- The highest number of victims were gay males aged 20-29 years
- It is estimated that Lambeth has a higher LGBT community (approx. 15%) compared to the national average (7%)
- The visibility of LGBT people around town centres, housing estates and green spaces and LGBT venues (summer months) leads to an increase in reported Homophobic and Transphobic Crime
- In FY2003-4 there were 11 specified investigations of homophobic incidents and 103 flagged investigations. Investigations increased by 38% (3 cases) and flagged incidents increased by 5% (5 cases) since FY2002-3

⁶ Any offence can have a flag appended to it. This means there is an additional element within that offence for consideration. e.g. A criminal damage offence can be flagged as domestic violence related.

Racially motivated incidents

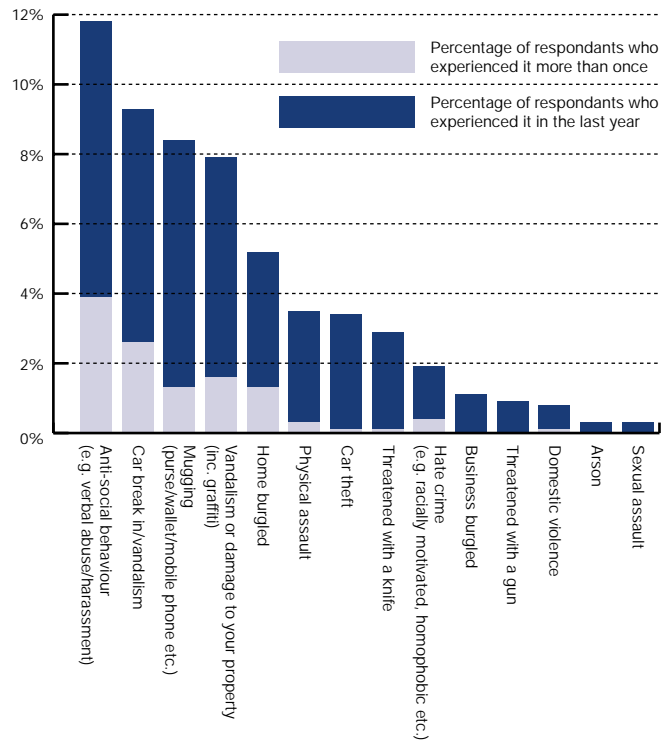
- In FY2003-4 there were 28 specified investigations of racial incidents and 438 flagged investigations relating to racial incidents. Investigations reduced by 10% (3 cases) and flagged incidents reduced by 16% (86 cases) since FY2002-3
- In FY2003-4 the highest numbers for flagged racial incidents were recorded in Bishops and Coldharbour wards

What did you tell us?

Residents Survey

- Respondents to the face-to-face survey stated that they had experienced physical mugging and assault in Brixton more than anywhere else
- 14% said that they had seen a gun in Brixton
- 19% from North Lambeth reported seeing a gun
- 55% of respondents cited feeling unsafe because of gangs in an area
- 51% of interviewees who experienced Violent Crime in the last year stated that a 'group' were the perpetrators
- When asked 'Why do you feel unsafe?' 24% cited guns, knives and other weapons
- In face-to-face interviews 15% said that they had experienced a mugging in the last five years and 8.4% had experienced mugging in the last 12 months, with 1.3% being a repeat victim
- 3.5% have been physically assaulted, 2.9% threatened with a knife, 1.9% a victim of hate crime and 1% threatened by a gun

Table 10
Experience of Crime face-to-face interviews



Number of incidents experienced	%
One	24
Two	7
Three	2
Four	1
Five+	1
At least one incident	36
No incidents	64

Note: Respondents could give more than one answer

- The following graphs indicate when respondents felt they were most likely to be victims of Violent Crime

Table 11a Mugging
Where did this incident occur?

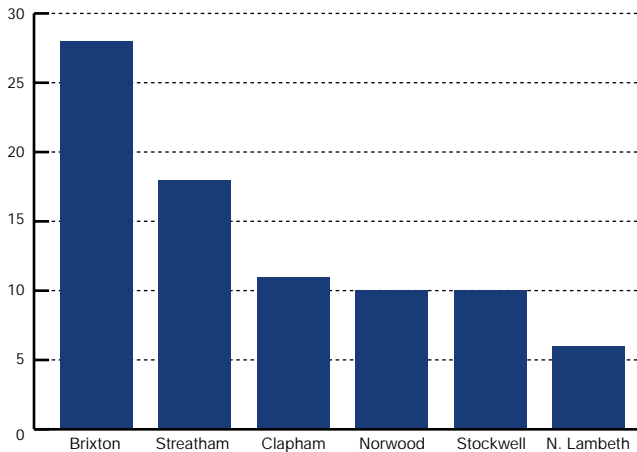


Table 11b Mugging
When did this incident occur?



Table 12a Threatened with a knife
Where did this incident occur?

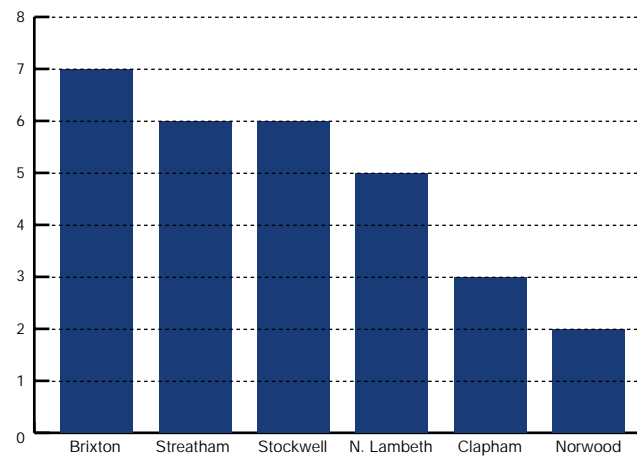


Table 12b Threatened with a knife
When did this incident occur?

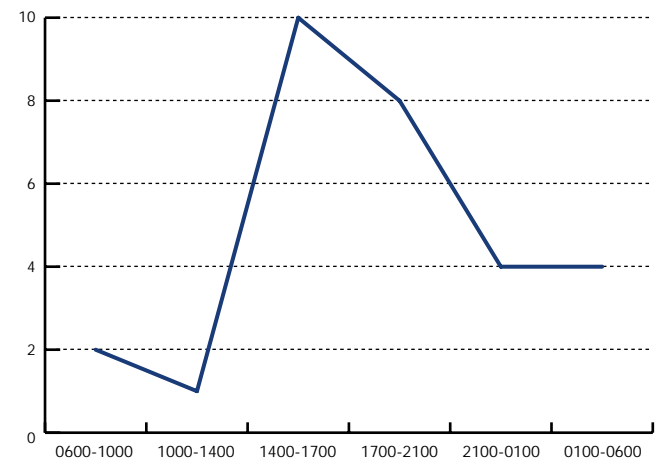


Table 13a Threatened with a gun
Where did this incident occur?

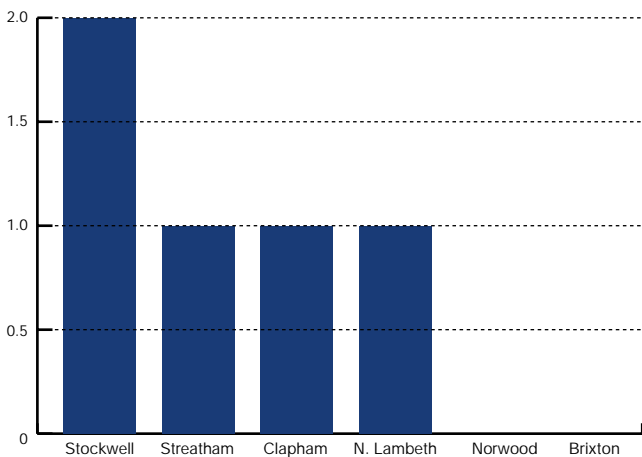


Table 13b Threatened with a gun
When did this incident occur?

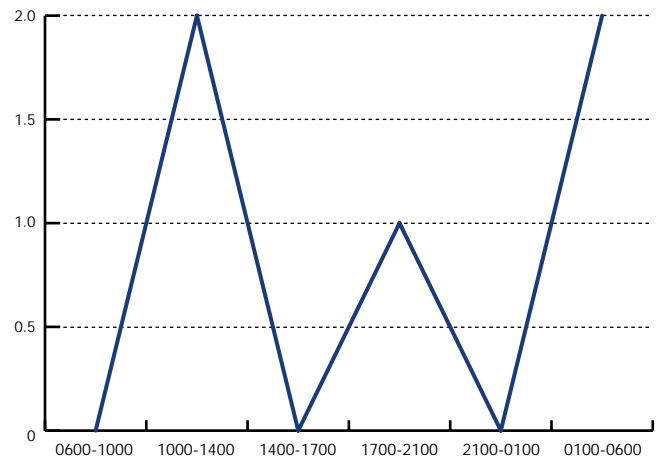


Table 14a Physical Assault
Where did this incident occur?

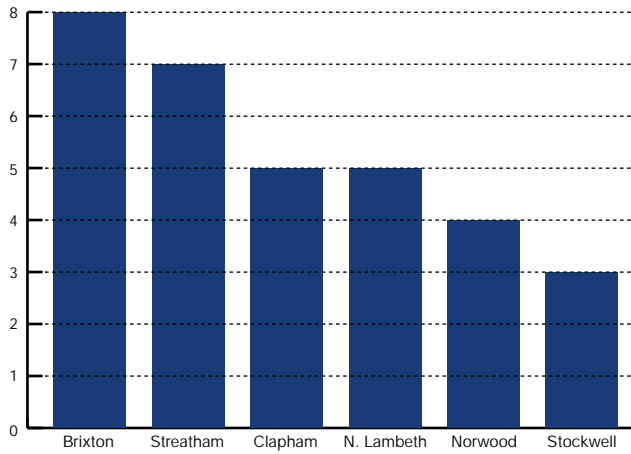


Table 14b Physical Assault
Where did this incident occur?



Table 15a Sexual Assault
Where did this incident occur?

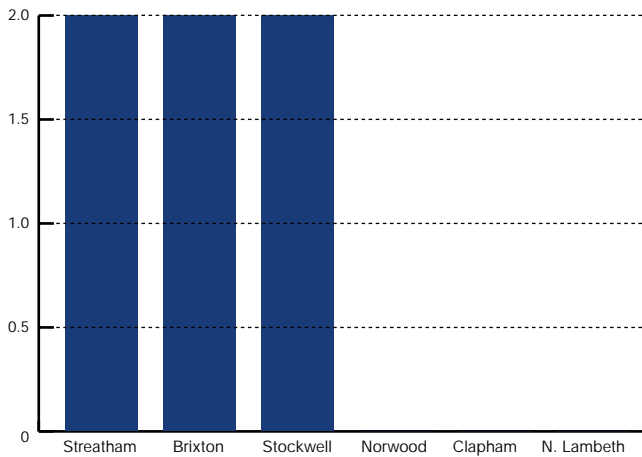
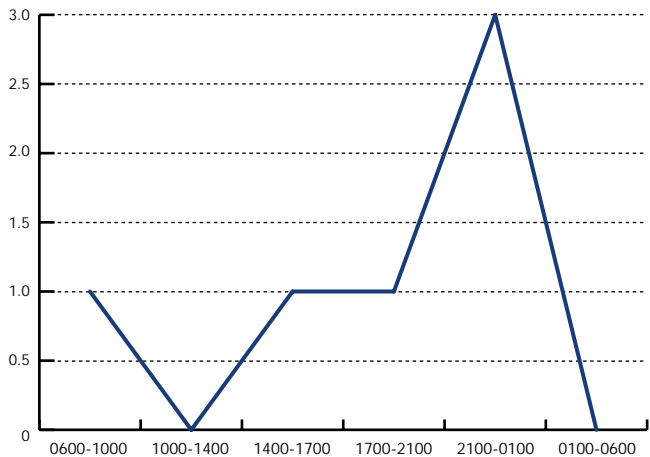
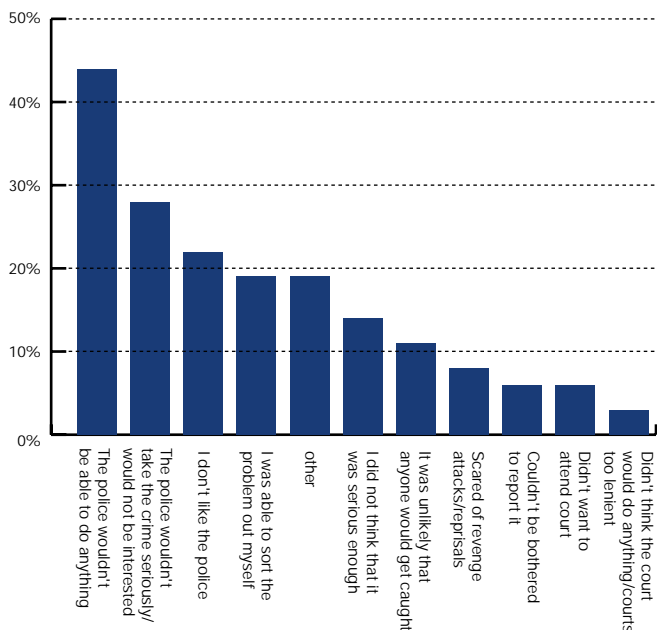


Table 15b Sexual Assault
Where did this incident occur?



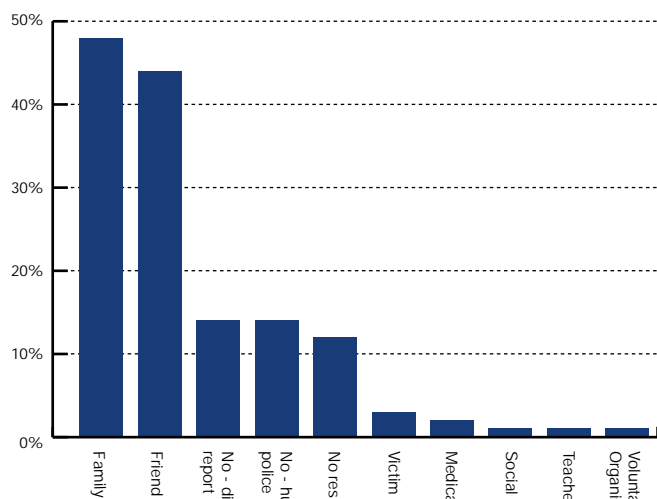
- 73% of respondents who had experienced a violent incident, said that the incident was carried out by a stranger
- 53% of recent victims of Violent Crime reported this incident to the Police. Reporting was more common amongst white respondents (26 out of 42 incidents) than it was for black British victims (11 out of 23)
- Of those respondents who had experienced a violent incident, nearly 90% reported the incident to family or friends

Table 16
Why did you not report the crime to the police?



Note: Respondents who did not report the incident to the Police. Respondents could give more than one answer. Responses were coded from unprompted comments

Table 17
Did you report this incident to anyone else?



Note: Respondents could give more than one answer

Our young people said...

- To a large extent young people agree that young people carry knives to protect themselves, especially if they are on their own, and not with the intention to harm anybody
- Young people referred to a 'kind of street culture' of not reporting crime or asking for help from the Police, but dealing with conflict themselves
- Of the 366 respondents to the young people's questionnaire, 31 said that they had been a victim of robbery or mugging in the last year
- 188 of the young people who responded felt unsafe because of gangs in the area

Our focus groups said...

- A key concern was the perceived gang and gun culture
- Participants in our focus groups, in particular: LGBT, people from the Asian community and young people, felt it necessary to change their behaviour and appearance in order to reduce the likelihood of being targeted for violence

Our staff survey showed...

- A significant number of staff have previously been a victim of crime such as threatening and abusive behaviour, road rage attack and mugging
- Council staff identified the threat of guns, knives and other weapons as the second highest category of what made them feel unsafe in Lambeth

Self completion survey...

- When asked 'Which area do you feel unsafe in Lambeth?' 80% felt unsafe in Brixton, 53% felt unsafe in Stockwell
- Of those that answered they felt unsafe, when asked 'Why do you feel unsafe?' – 59% cited Drugs Dealers in the area; 55% reputation; 55% Gangs; 53%; Drug users; 48% Guns, knives and other weapons; 47% beggars/ aggressive begging; 44% because of street drinking and 6% felt vulnerable because of their sexuality
- In the last 12 months 39% said that they or a member of their household had been a victim of crime. Of this 4.3% had been a victim of physical assault, 2.5% were threatened with a knife and 2% experienced Hate Crime.
- Of those respondents that have been a victim of a violent crime only 72% reported to the Police, 34% told a family member, 25% reported to a friend and 11% to Victim Support

What have we done so far?

Domestic Violence

- Recruiting Domestic Violence Coordinator
- Healthy Relations Programme to year ten in schools across Lambeth and Southwark
- One stop shop being developed in Lambeth
- Additional finance has been identified to improve the awareness and increase reporting of Domestic Violence

Homophobic/ Transphobic Crime

- Establishment and promotion of community based Lesbian Gay Bisexual Transgender (LGBT) Forum, to give advice to statutory agencies regarding LGBT issues
- Development of the LGBT Forum website, to promote the forum and increase reporting and intelligence of homophobic and transphobic crime
- Implementation of the Safer Gay Vauxhall Strategy. For the Police to work in partnership with the Vauxhall Gay Business Forum to promote safer spaces and responsive community policing
- Establishment of the non-Police/ 3rd-party reporting scheme specifically for the LGBT community
- Supplementary LGBT awareness training for Lambeth Police Officers/ PCSOs and Street Wardens to assist them to engage with Lambeth's diverse LGBT community
- Continued support of Lambeth Police LGBT Helpline, which continues to see on average 20 calls per month for year 2003-4 (20% of recorded homophobic/ transphobic crime)
- Joint Police/ LGBT community intelligence gathering operation in relation to violent robberies and attacks on men using Lambeth green spaces/ public sex environment (PSE's)

Guns

- Research/ Youth consultation in 2003 in schools, youth clubs, faith groups, Young Offenders Institutions and Youth Offending Teams by Independent Advisory Group (IAG)
- Gun crime awareness being conducted in schools by Code 7
- Feeding into National Strategy for London-wide IAG-Trident
- Advocacy program – Community Victim Liaison i.e. support, advice, and refer victims. Head and administration in place
- Youth advocacy program-youth empowerment course around music and mentoring

- Borough Youth and Gun Focus Group commenced July 2004
- Faith Group – securing funding for a gun crime coordinator
- Lambeth Police gun crime focus desk
- Cheryl Seely, member of the Lambeth IAG is an advisor to the Home Secretary
- Annual candlelit vigil for families of gun violence
- Boyhood to manhood development programme
- Street pastors outreach work in Brixton Town centre
- Heart2heart ministries – Youth Against Guns conferences
- Tri borough youth and gun crime initiative – part of nationwide program

Emerging Priorities

- There remains under reporting of Crimes Against The Person
- There is a need for a broader community based victims and witness service
- Improve referral process from the Police and other agencies to Victim Support services
- Arterial routes and transport hubs were commonly found within the hotspots of the three priority wards
- Guns and gangs were a constant concern amongst our communities from our surveys