

Every Lambeth Child Matters

Issue 8 Summer 2007

The Newsletter for Lambeth's Children and Young People's Strategic Partnership (CYPSP)

'Team Around the Child' explained

Nationally, it has been recognised that there is a need to improve outcomes for children and young people. In 2003 the Government launched 'Every Child Matters: Change for Children,' a new approach to the well-being of children and young people.

The aim is for every child or young person, whatever their background or their circumstances, to have the support they need to:

- Be healthy
- Stay safe
- Enjoy and achieve
- Make a positive contribution
- Achieve economic well-being

Lambeth's response to Every Child Matters is Team Around the Child (TAC). TAC allows professionals to jointly assess needs and provide services for children and young people in a multi-agency manner.

continued on page 2

Inside



CAF Professional training
PAGE 5



ContactPoint
PAGE 8



Voice of the Youth
PAGE 12



Implementing Richard
PAGE 14

1 CYPSP
Children and Young People's
Strategic Partnership



Every Child Matters

Welcome to the summer 2007 edition of the Every Lambeth Child Matters newsletter. This issue focuses on Team Around the Child (TAC), a new integrated service provision model for all services provided to Lambeth children and young people which was recently launched in the borough.



TAC is Lambeth's response to the Government's Every Child Matters agenda and is an important milestone for both Lambeth and the Children and Young People's Strategic Partnership. TAC enables the partnership to meet its statutory requirement to have Children Trust

Arrangements in place by 2008. The TAC model requires Joint commissioning arrangements across the partnership and integrated service delivery supported by integrated systems and processes.

The achievement of these arrangements is the key outcome that the CYPSP will be tested against during Lambeth's Joint Area Review and Corporate Assessment in 2008.

TAC will build upon the excellent partnership work we currently do and ensure that all children's needs are met and they are supported in a co-ordinated way.

Phyllis Dunipace
CYPS - Executive Director

Team Around the Child explained *continued*

TAC will promote a shift away from specialist to preventive services. At present the resources available to support children and young people are divided between the universal services that the majority of children access and specialist services that support a very small proportion of children and young people with complex needs.

TAC aims to shift resources to provide preventative services. TAC is a model of services delivery that brings a range of agencies together, enabling them to pool resources and professional expertise to prevent a child or young person requiring specialist support in the future. TAC is designed to allow professionals to work together to provide services in a multi-agency manner, to improve outcomes for an individual child.

Delivering services that are integrated and focused around the needs of children and young people can only be achieved if all practitioners are working to the same assessment. Therefore, the Government has launched the Common Assessment Framework (CAF), a nationwide standardised

approach to conducting an assessment of a child's additional needs to decide how those needs should be met. The CAF is already in use within Lambeth.

One professional leads

TAC is about ensuring that children and young people who have additional needs achieve improved outcomes and have a better experience of services through the provision of integrated support.

The lead professional is a key element of this integrated support. They coordinate provision and act as a single point of contact for a child and their family when a range of services are involved.

This person will make sure that progress is monitored, check whether support or services should be changed and whether more specialist support may be required.

Accessing TAC

TAC is about supporting children and young people who have additional needs but don't yet require specialist services. Each TAC will be individual and specific to

that young person, supported by a multi-agency team of professionals using CAF and information sharing arrangements to determine what services should make up the TAC for a young person and their family.

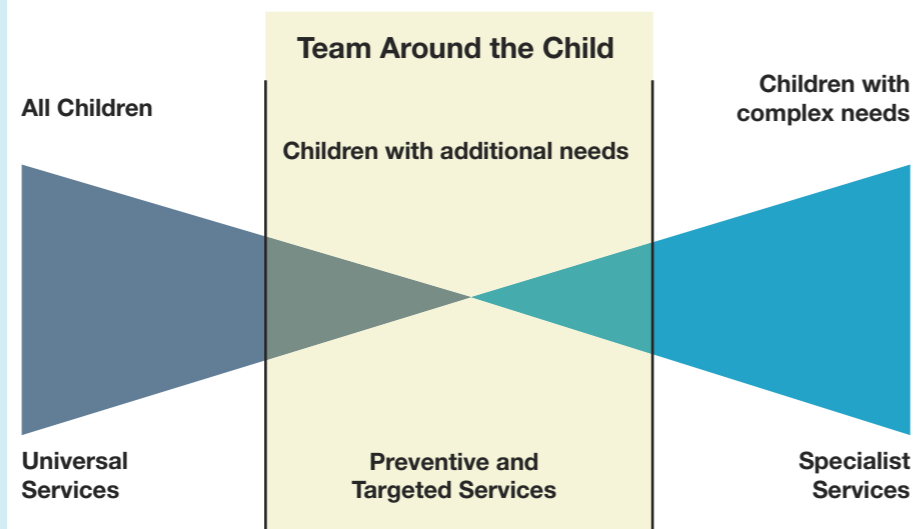
To ensure services for children and young people in Lambeth are accessible, TAC will be delivered in three planning areas. These are the North, South East and South West localities. An area manager will establish multi-agency teams (made up from staff across the partnership). The professionals within the team will provide individual support to meet the requirements of children with additional needs.

For more information:

To find out more about TAC email tac@lambeth.gov.uk

Further suggested reading:

www.everychildmatters.gov.uk/contactpoint
www.everychildmatters.gov.uk/caf
www.lambeth.gov.uk/tac



Some Key TAC Benefits

- Swift and easy referral
- Greater efficiency and effectiveness
- Increased preventative working and engagement of users and community
- Schools will work more effectively with preventative services

Children's Trust Arrangements

Children's Trust Arrangements (CTAs) are a set of formal agreements between service providers and agencies across the Children and Young People's Strategic Partnership (CYPSP) which are to be finalised by September 2008.

These agreements are designed to bring together and formalise the joint work that is already taking place across the borough.

Lambeth CYPSP has agreed that they will implement these arrangements for Children with Disabilities (CWD) and children with Special Educational Needs (SEN).

The Partnership formed the Children with Disabilities and Special Educational Needs Strategy Group to focus its activity toward a number of key areas;

- developing multi-agency transition arrangements in order to ensure children and young people receive appropriate support throughout childhood and into adulthood;
- reaching an agreement to jointly plan and commission services so that they are co-ordinated, more cost effective and matched to identified need;
- developing an integrated approach to the assessment and care of children and young people.



Common Assessment Framework

The Common Assessment Framework (CAF) is a key part of delivering Team Around the Child (TAC). The CAF is a standardised approach to assessing a child's additional needs and deciding how best to meet those needs.

Prevention and early intervention offers the best chance of making a positive difference to children and young people's lives. Some families need additional support as children and young people grow and develop. The CAF is intended to provide a simple holistic assessment of a child's needs and strengths, taking account of the role of parents, carers and environmental factors on their development. Practitioners will then be better placed to agree, with the child and family, about what support is appropriate.

While in general most children will be well supported by the professionals' that they routinely come into contact with, there will on occasion be a teacher, health visitor or a worker from another agency concerned that a child has additional needs that are not being met. The CAF is a tool that professionals should use to define what additional support is needed.

The CAF has major implications for children and their families so it is hugely important that practitioners who are expected to use it are well trained. Lambeth and its partners including the Primary Care Trust (PCT), South London and Maudsley NHS Trust (SLAM), Guys and St Thomas' NHS Trust and Kings College Hospital, are

running several two day training events. It is crucial that as many people as possible within the borough attend.

Practitioners at the training will understand the key issues around information sharing, obtaining consent and multi-agency decision making from the CAF. The training will also give users the confidence to conduct an assessment to support the needs of a child.

Furthermore it will prepare practitioners to conduct the role of lead professional for children and young people.



Professionals receiving CAF training recently

Refresher courses will be available to keep practitioners up to date with CAF developments.

Training dates are now available for staff from September 2007 to March 2008.

For more information on CAF and how it's being taken forward in Lambeth please contact:

Kevin Gordon, Assistant Director, Change Management
020 7926 8157 (Council staff and voluntary sector enquiries)

Yinglen Butt, Children Integration Partnership Manager
020 7414 1375 (Lambeth PCT and other NHS providers)

For general or national guidance on CAF, Lead Professional and other Every Child Matters initiatives please look at www.ecm.gov.uk/CAF, email tac@lambeth.co.uk

CAF in action

A CAF case study

A health visitor became involved with a family who recently moved to the area. "The mum has three children under five. There are a number of health problems in the family – which suggested that they probably need a range of support as they settle in the area. The children suffered from asthma, epilepsy and deafness, and the mother herself was deaf and had some learning difficulties". The health visitor contacted mum and found that no CAF had been completed for the children. The parent was asked by the health visitor if she was happy for her to have the health visitor involved start a CAF in order to ensure that the full range of her family's needs were

identified. The parent agreed.

Completing the CAF uncovered a range of emotional and practical issues – from the stress of having her mother-in-law living with the family, to transport problems that were making it very difficult to get the children to their large number of medical appointments. On the basis of the information gathered, the health visitor contacted people from a range of agencies, including Sure Start and a community paediatrician, and asked them to get involved in a team to help the family.

"The paediatrician was able to streamline all the appointments so that all the children could be seen on the same day each week, reducing

unnecessary travel and making transport much simpler."

"Sure Start then helped to support the family while they were settling into the area. They offered some respite care and put the parent in touch with a local support group for the deaf. They also discussed with the mother how to find the most appropriate schools for children."

Note: Extract for case study taken from: every child matters, making it happen, working together for children, young people and families.

CAF can help streamline visits to professionals



ContactPoint

ContactPoint
because every child matters

because every Lambeth child matters

To support TAC and the multi-agency working there needs to be a quick way for a practitioner to find out who else is working with the same child or young person, making it easier to deliver more coordinated support.

ContactPoint formally known as the 'Information sharing index' is one of a range of tools that will help services work together more effectively on the frontline to meet the needs of children, young people and their families.

It is a national tool that is being developed by the Department for Children, Schools and Families and Lambeth CYPSP are currently preparing for its implementation in late 2008.

ContactPoint will display basic identifying information for every child in England to practitioners who are authorised to access the system. Agencies providing information to ContactPoint include national organisations (for example the Department for Work & Pensions, DCSF and Save the Children) and members of the Lambeth CYPSP. This information will provide a comprehensive view of the services that a child is receiving and help safeguard children who are at risk from harm.

What will it contain?

The database will only hold basic identifying information for all children in England (aged 0 up to 18).

ContactPoint will hold the following information:

- name, address, gender and date of birth of child
- contact details for parents or carers
- educational setting (e.g. school)
- primary medical practitioner (e.g. GP practice)
- practitioners providing other services
- a lead professional for that child (if appointed)
- whether or not a CAF has been completed

ContactPoint will not hold assessment or case information, or subjective observations about a child or their parent. It will not contain any details such as birth weight, exam results, medical records, diet or any other detailed personal information about a child or their family.

Consent from the young person or the child's parents and carers will be required to record details about practitioners providing sensitive services. These services include: sexual and mental health and substance abuse services. Where consent is given, access to the information will be restricted.

Is it Secure?

Information security is paramount so all users will have to go through appropriate security checks, including enhanced Criminal Records Bureau checks. Authorised users will include those working in education, health, social care, youth offending and some voluntary organisations. Information is only available to professionals working with a specific child.

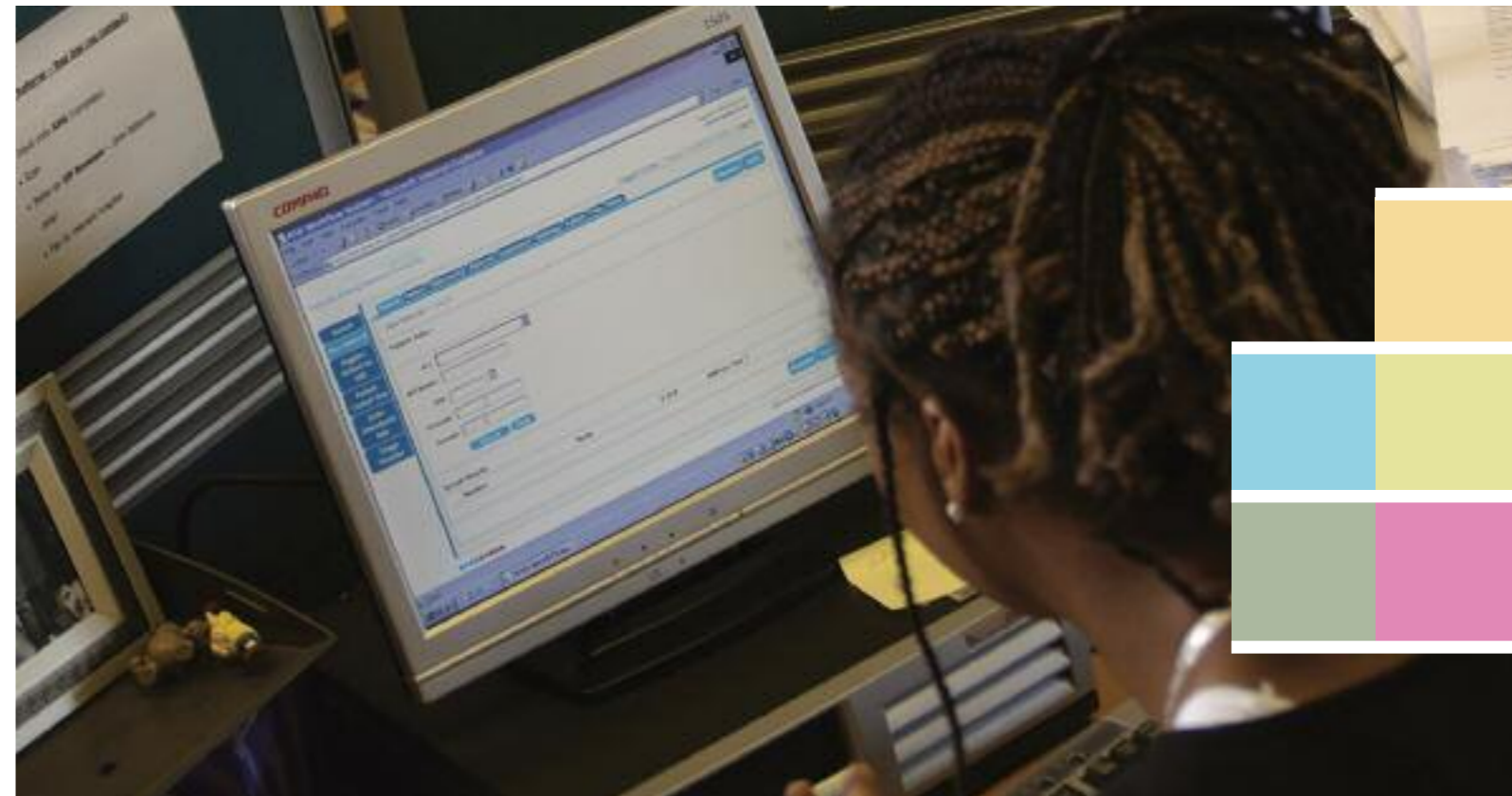
Users will be trained in the safe and secure use of ContactPoint, information sharing practice and the importance of compliance with the Data Protection Act and Human Rights Act. All users should receive training as close as possible to the time that they will start to use ContactPoint.

What's happening locally?

There is a project running to prepare Lambeth for ContactPoint. This has included an audit of both electronic and paper systems containing child information within the borough. Lambeth has also looked to the trailblazer authorities to learn from their experiences in a bid to develop best practice.

Other key parts of this project include auditing the number of people who will require access to ContactPoint, how we can improve the quality of our data across the partnership and organising training for the practitioners who will use ContactPoint.

For more information on ContactPoint within Lambeth contact Chris Mellard at cmellard@lambeth.gov.uk



New Ways of Working: TAC Friendly Sites

To enable Team Around the Child (TAC) professionals to provide services within the three planning areas across the borough, we need to create TAC friendly sites, from which they can work.

New Ways of Working encompasses a range of working practices in which IT and shared facilities enable professionals to work all or part of the time away from their office base. These include remote or mobile working.

We need to identify spaces where Team Around the Child professionals can work from. In particular we would

like to hear from schools, children's centres and other partner agencies if you have spaces. Each site should have hot desking / office space available and should have access to the Internet for email and login onto networks for staff to use. Staff will be provided with laptops and mobile phones.

From November 2007, TAC professionals will also be able to use the Gracefields Gardens Joint Service Centre in Streatham (the first jointly occupied accommodation between Lambeth Council and Lambeth Primary Care Trust).

Please contact the TAC area managers with details of any available spaces. You can email tac@lambeth.gov.uk or write to: Team Around the Child, 7th Floor International House, Canterbury Crescent, London SW9 7QE.

Children and Young People's Plan 2 published

Lambeth's Children and Young People's Strategic Partnership (CYPSP) recently published version two of the Children and Young People's Plan (2007 – 2010).

The plan sets out the partnership's vision and aspirations for the children and young people in Lambeth. It focuses on a number of agreed priorities that will drive improvement in outcomes for children and young people.

The Plan demonstrates the commitment of the Partnership to integrating service delivery, partnership working, raising standards, safeguarding children and young people and developing the skills of professionals working with children and young people. It also outlines how the partnership will ensure all children and young people in Lambeth are healthy, feel safe, and are able to enjoy and achieve to their full potential, make a positive contribution to their community and move on to achieve economic wellbeing.

Consultation with the Children and Young People's Strategic Partnership, voluntary and community sector, schools, parents, carers and children and young people over the past year has informed a revised vision and priorities in line with the supplementary guidance published by the government in February 2007.

The revised CYPP2 Vision is below:

"We will enable children and young people to be happy, healthy and safe to achieve their full potential. We will achieve this by:

- Developing fully integrated services that are seamless, efficient and improve outcomes for children and young people
- Ensuring effective and efficient partnership working to safeguard and promote the welfare of children and young people
- Increasing early identification of need and intervention thus preventing a need in the future
- Seeking to engage children, young people and their families, from all communities"

CYPP2 Priorities:

1. Significantly improve young people's mental, physical and sexual health
2. Reduce the prevalence of substance misuse amongst children and young people
3. Provide targeted and specialist family support that contributes to the safeguarding of children and young people
4. Prevent young people from drifting into crime, in particular young black and minority ethnic boys

5. Improve transition arrangements for vulnerable young people, in particular Looked After children and Children with Disabilities
6. Increase access to quality local school places and good quality childcare places
7. Raise attainment levels for all pupils and achieve floor targets (these set our performance targets at a local level) to enable pupils to achieve their full potential
8. Narrow the achievement gaps for specific groups
9. Increase opportunities for all young people to participate in out-of-school activities
10. Increase opportunities for children, young people and their families' voices and views to be heard, enabling them to make a positive contribution to their community
11. Increase the number of young people in education employment and training, developing skills for adulthood

The CYPP2 also sets targets to measure the improvement in outcomes for children and young people in Lambeth over the next three years. Performance on these targets will be monitored by the CYPSP Children's Trust Board.

The CYPP2 is now available online:

www.lambeth.gov.uk/Services/Education/Learning/CYPSPolicy/CYPP2007.htm

Annual Performance Assessment (APA) of Lambeth's Children Services

Lambeth's services to children and young people are about to be assessed by the Office for Standards in Education (Ofsted) as part of the Annual Performance Assessment (APA) process. All councils have to undergo an Annual Performance Assessment as required by government legislation. The object of the assessment is to evaluate how well agencies including the Council, the Primary Care Trust, Police and the Voluntary Community and Sector Services are working together to improve outcomes for children and young people in their locality.

Evidence

Lambeth has to submit written evidence – in the form of a review of the Children and Young People's Plan 1 (2006-07) – in addition to senior managers being interviewed by inspectors from Ofsted. The inspection also takes account of the views of children, young people and their parents and carers living in the borough. This year the inspectors will gather the required evidence from

surveys of pupils carried out in local schools (Tellus2 survey and School survey). The performance of particular aspects of services is measured against a set of local and national indicators. This provides quantifiable measures, for example, how many children are passing their GCSEs or how many children are ending up being looked after, etc.

In 2006, Lambeth CYPS received a three star APA rating (out of four) for social care and education, and a four-star rating for its capacity to improve. This meant that the Lambeth Children and Young People's Service was judged as providing services that were consistently above minimum requirements. It also meant that services were increasingly cost-effective and children and young people were benefiting from it. Lambeth aims to improve on this rating in 2007. Gaining four stars would be a great achievement in Lambeth, especially as levels of need are so much higher than other boroughs in London.

External validation

The APA provides useful external validation of what we do and how we do it. It identifies areas of strengths where Councils are doing particularly well and areas for improvement. The annual inspection means that the review process is constant, the Annual Performance Assessment provides an accountability test for local service providers. In other words, it ensures that Council tax payers' money is being well spent and local people are getting value for money. It is also a way of finding out if services are benefiting those who need it most. Ofsted produces reports on all the inspections that it carries out and this gives individual authorities the opportunity to learn from good practices in high performing boroughs.

Timetable

Lambeth submitted its written evidence in the form of the review of Children and Young People's Plan 1 (2006-07) Ofsted in 1 June 2007. Ofsted will review these documents and conduct a scrutiny day in September to interview senior managers and staff. This will then be followed by a short period of feedback when managers will get an opportunity to comment on the findings of the inspection and discuss with Ofsted any inaccuracies in the report. Ofsted Inspectors will then provide a grading letter for Lambeth children services in November.



The Annual Review helps Lambeth improve outcomes for all children in the borough.

Governance and the Children Trust Board

The Children and Young People's Strategic Partnership has reviewed its Governance arrangements. The review has enabled the Partnership to achieve its vision for children and young people while implementing Children's Trust Arrangements.

In addition to the statutory requirement to have Children Trust arrangements in place by March 2008, the partnership has acquired additional responsibilities, due to changes in legislation therefore it was necessary to review and streamline the governance arrangements to ensure that they are fit for purpose. The main changes are outlined below:

- The CYPSP Board is now Children Trust Board with responsibility for overseeing implementation of Children's Trust Arrangements.
- An executive group comprising of the chief officers of the statutory agencies (Lambeth Children and Young People's Service, Lambeth Primary Care Trust and the Borough Commander of the Metropolitan Police) has been established to ensure decisions made by the Children's Trust Board are carried forward
- Four sub groups have been established to reflect the requirements to implement Children Trust arrangements by 2008: - Integration of Service Delivery,

Strategic Commissioning, Performance & Monitoring and Workforce Development

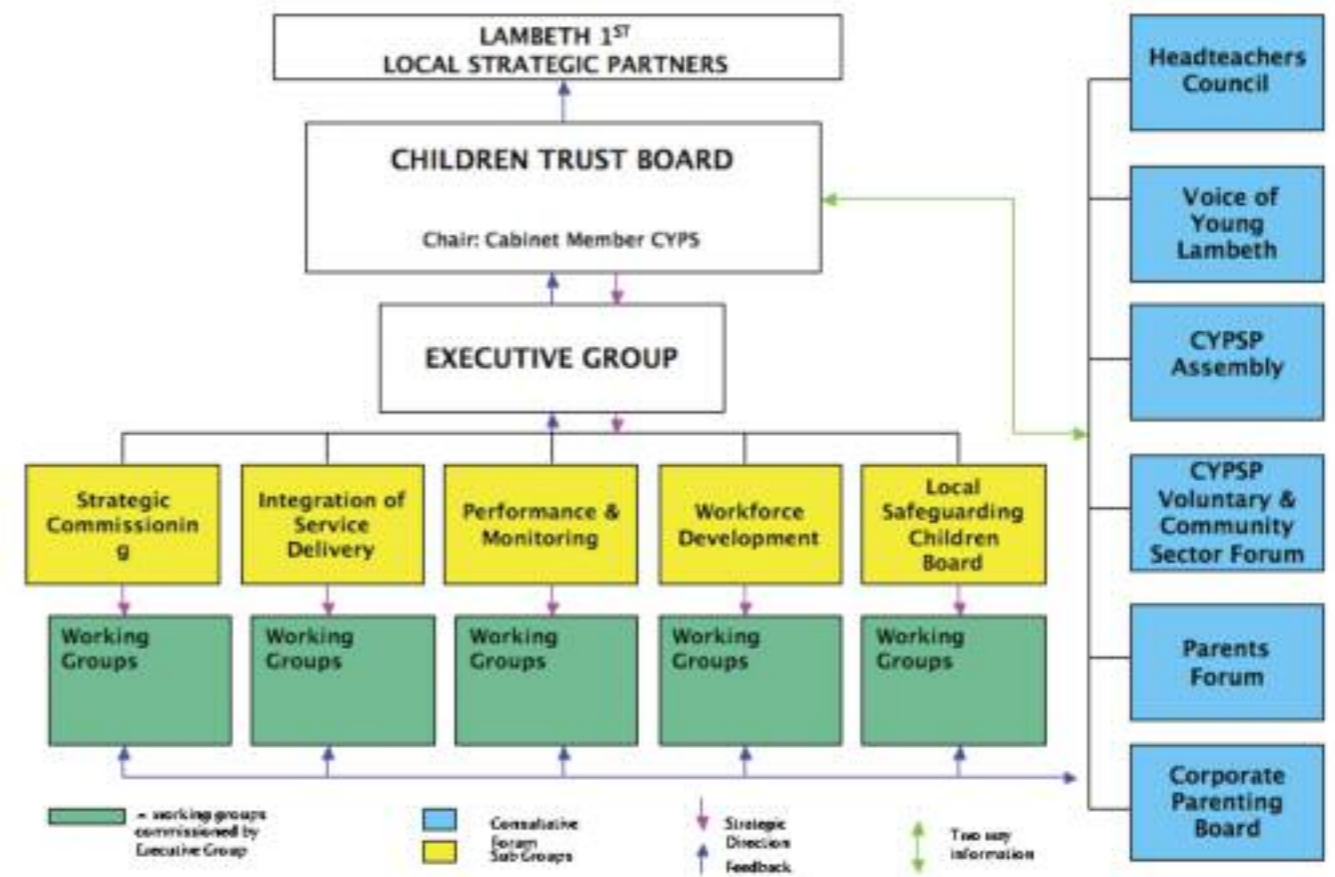
- Two additional consultative groups have been established - Voice of Young Lambeth and a Parents Forum bringing together a range of mechanisms and processes for engaging with children, young people, parents and carers
- The relationship between the Local Safeguarding Children's Board and the Children and Young Peoples Strategic Partnership has been made clearer by including the Local Safeguarding Children's Board as one of the sub groups of the CYPSP.

The new governance arrangements better reflect the strategic nature of the CTB, leaving the setting of agendas and operational service delivery to the newly established executive and subgroups.

For more information on the Children and Young People's strategic Partnership and the new governance arrangements please contact Katie Myhill, Partnership Performance Officer, kmyhill@lambeth.gov.uk / 020 7926 1106



Revised CYPSP Governance Structure:



Youth given a voice in Lambeth

Lambeth Children and Young People's Strategic Partnership (CYPSP) is committed to increasing the role that young people play in the community through consultation, decision making, and involvement in delivery of positive activities for themselves and others.

Lambeth CYPSP is successful at listening to the views of children and young people. The partnership has a range of mechanisms for seeking the views of children and young people from birth to 25 years old.

Lambeth Youth Council

Lambeth Youth Council has 35 members (young people) supported by five staff. The youth council is run by young people for young people and exists to:

- Highlight issues of concern to young people
- Allow young people to influence policies that affect them
- Make a difference by initiating special projects
- Train young people to make a positive effect in their communities

The youth council carry out a variety of activities with children and young people including: Peer Education; Peer Inspection and Youth consultation.

Commissioned by the CYPSP with Neighbourhood Renewal Funding (NRF) the youth council have recently carried out research with over 1300 children and young people on three of

the governments every child matters outcomes: Be healthy, stay safe, Enjoy and achieve and the Youth Mayor for Lambeth campaign.

The research focused on what is important for children and young people in the Borough and how we can use this information to plan service delivery. The results of this consultation have been used to inform the priorities

for the Children and Young People's Plan 2 (2007/10).

(For a copy of the Youth Consultation report email Ranjeet Kaile – rkaile@lambeth.gov.uk)

How else are we engaging with children and young people?

Lambeth's Integrated Youth Strategy demonstrates how the integration of



youth services in Lambeth around young people's needs will improve outcomes for children and young people. It aims to engage more young people in positive activities and empower them to shape the services they receive. Lambeth's Youth Opportunities Fund has enabled young people to work with the Local Authority to apply for small grants to develop, manage and deliver their own ideas for youth activities.

Lambeth's Early Years and Sure Start Service has put listening to the views of young children at the heart of its 'Brightstart' Childcare Strategy. A consultation project with children under six years old was completed to find out what things in their environment they like and don't like. Over 200 children participated in this project.

Lambeth's Corporate Parenting team facilitate consultation groups with looked after children aged five to 24 years to help inform and improve service delivery for all children in care.

Examples of projects young people have been involved in are: the G2K Magazine produced twice a year by young people in care for young people in care; Young people looked after have been involved in tendering panels to choose semi-independent provision for care leavers. The Corporate Parenting Team are also undertaking a targeted consultation with looked after children with disabilities to obtain their views about being looked after to help develop consistent and meaningful consultation processes for them.

Next steps:

There is a need to co-ordinate consultation with children and young people across the partnership to reduce duplication and ensure we are engaging with children and young people from all groups and communities across the borough.

The review of the CYPSP Governance arrangements has overseen the establishment of the 'Voice of Young Lambeth' forum. The Voice of Young Lambeth is a consultative group aimed at co-ordinating consultation across the partnership. The forum will meet five times per year, holding three key conferences, that will be focused around the five every child matters outcomes:

Be healthy, Stay safe, Enjoy and achieve, Make a positive contribution and Achieve economic wellbeing. The voice of young Lambeth will follow the 'Hear by Right Framework' which provides clear guidelines for organisations on how to actively involve young people in shaping their lives, services and environments.

For further details on the Voice of Young Lambeth Forum please contact Katie Myhill, 020 7926 1106 / kmyhill@lambeth.gov.uk

At present the Youth Council doesn't have a leader in the form of a Mayor. However this is going to change. In November 2007 there will, for the first time, be borough-wide election opportunities for young people to join the Council and stand for Mayor. This is a major initiative as once elected, the youth Mayor will be designated a fund of £25,000 to enable the youth Mayor and their advisors to improve services aimed at young people.

Youth Council contact Diane Angela Jones 020 7926 2193/ dajones@lambeth.gov.uk



Parents Forum

The Lambeth Parents Forum has been established as a means of consulting and interacting with parents and carers in the borough.

The forum gives parents and carers an awareness of the range and variety of provision in the borough, access to senior managers for two-way an opportunity to share information and it ensures the Children and Young People's Partnership (CYPSP) reflects parental views, through meaningful consultation.

Each year there will be a total of six meetings, with two being focused on networking for parents and carers across the borough. These are linked to the Childrens Trust Board meetings to allow for two-way communication between the parties.

The forum is open to all parents with children and young people within the borough but the uptake so far has mainly been from parents with children under 5 and children with special needs.

If you would like to be involved or require further information on the Parents Forum, please contact Denise Downie-Campbell by email: DDownie-campbe@lambeth.gov.uk

Implementing Bichard

Strengthening Processes to Safeguard Children and Young People in Lambeth.

Following the conviction of Ian Huntley for the horrific murders of Holly Wells and Jessica Chapman in 2003, there was public outrage at the revelation that Ian Huntley had been able to easily secure employment as a school caretaker, despite being known to the authorities for a number of years.

The subsequent inquiry, conducted by Sir Michael Bichard, identified a range of errors, omissions, failures and shortcomings by the agencies that had had contact with Huntley and, taken together, highlighted severe failures in processes within the public sector. The four main areas of concern related to:

- Inability to identify individuals whose patterns of behaviour causes concern
- Information and intelligence sharing between agencies
- Poor record retention relating to causes of concern
- Inadequate training for staff on reporting concerns

In total, 31 recommendations were made by the inquiry, a number of which relate to the processes and management of local authority departments, and the way in which they work with their partners. Every local authority is required to ensure that all relevant recommendations are implemented and is subject to robust auditing by the Audit Commission specifically in relation to this.

Lambeth CYPS has prioritised the implementation of the Bichard recommendations and Divisional Director for Social Care, Yashi Shah, is leading a project group to fully implement the recommendations within the council. The implementation group consists of senior staff with relevant expertise in safeguarding, information management, HR and workforce development.

The project group has identified four work streams in order to implement the key recommendations in each of the four main areas identified by Bichard. The working groups are:

- Records Management Working Group
- Safer Recruitment Working Group
- Workforce Training Working Group
- Information Sharing Working Group

To date, the working groups have successfully completed the following actions:

- Updated Lambeth's policies and procedures in relation to recruitment of staff, checking criminal records of staff, and the recording of allegations made against staff
- Updated CYPS' record management policy and working towards updating the record management procedures
- Updated Lambeth's guidance to schools and other agencies involved in taking children and young people on outdoor educational visits
- Provided in-depth training for 180 staff on Information Sharing, with further courses planned throughout 2007/08 as part of the roll-out of TAC.
- Piloted Bichard awareness training on the CYPS staff induction
- Reviewed which staff throughout the council have contact with children and young people and identify relevant levels of training for these staff

The project group are now working towards embedding policies, procedures and training/ awareness sessions throughout CYPS and beyond to the rest of the council.

The development of Lambeth's Children's Centres and Team Around the Child is an ideal opportunity to embed our new, more robust policies and procedures and improve the way in which CYPS works with its partners to meet the needs of and to effectively safeguard our children and young people.



Neighbourhood Renewal Fund: Narrowing the gap for children and young people

The Neighbourhood Renewal Fund (NRF) is a special grant from central government which has been made available to England's most deprived local authorities. The Local Strategic Partnership (Lambeth First), allocates the NRF to its four theme partnerships to improve services, narrowing the gap between deprived areas and the rest of the country.

The Children and Young People's Strategic Partnership (CYPSP) is accountable for the NRF allocation given for children and young people in Lambeth. From 2006 to 2008 the NRF allocation for children and young people has been funding projects aimed at:

- Reducing teenage pregnancy and improving sexual health for young people in the borough
- Raising achievement of looked after children and young people

- Implementing restorative justice approaches within our schools
- Raising standards in primary schools that are not achieving national targets for children (Best for all our Children)
- Developing the Children and Young People's Strategic Partnership and implementing Children Trust Arrangements
- Celebrating the achievement of African heritage pupils

The CYPSP has received some additional NRF funding to deliver two projects from September 2007 – March 2008:

- Team Around the Child: Early Intervention (mental health) – This project will support the implementation of Team Around the Child and will see four Child and Adolescent Mental Health Service (CAMHS) intervention workers operating within Lambeth schools.

The CAMHS intervention workers will hold workshops for teachers and parents to raise awareness of children and young people's mental health and well-being and hold drop in sessions for children and young people.

- Accelerating for Learning: Key Stage 3 – This project aims to increase pupils attainment at Key Stage 3, within Lambeth secondary schools. It builds on the successes of the 'Best for all our Children' project raising standards within Lambeth's primary schools. The project will see professionals working with schools to embed systems, procedures and practices to increase attainment at Key Stage 3.

For more information on the NRF programme for children and young people please email Katie Myhill, Partnership Performance Officer, kmyhill@lambeth.gov.uk



KEY DATES

CYPSP Assembly

A consultative meeting, that provides feedback on policies and plans as they are developed. Participants are encouraged to offer innovative solutions based on their knowledge and experience of public facing service delivery. It is open to all professionals who work with children and young people in the borough and meets quarterly. Please contact Katie Myhill or Adam Preis on 020 7926 1106 / 0207 926 9472, kmyhill@lambeth.gov.uk / apreis@lambeth.gov.uk if you wish to attend.

7 September 2007, 2-4pm
Assembly Hall, Lambeth Town Hall

CYPSP Voluntary and Community Sector Forum

This is a termly meeting for the voluntary and community sector that has been set up as a consultative body for matters relating to children and young people. It is open to all those who work with children, young people and their families in the voluntary and community sector in Lambeth. Please contact Katie Myhill or Adam Preis on 020 7926 1106 / 0207 926 9472, kmyhill@lambeth.gov.uk / apreis@lambeth.gov.uk if you wish to attend.

11 September 2007, 2-4.30pm
The Lounge, Stockwell YMCA

CYPSP Executive Group (members only)

An executive group comprising of the chief officers of the statutory agencies has been established – Lambeth Children and Young People's Service, Lambeth Primary Care Trust & the Borough Commander of the Metropolitan Police

17 September 2007

CYPSP Parents Forum

The Lambeth Parents Forum has been established as a means of consulting and interacting with parents in the borough. The forum gives parents and carers in Lambeth an awareness of the range and variety of provision in the borough. It is open to all parents and carers across the borough. Please contact Denise Downie-Campbell, ddownie-campbe@lambeth.gov.uk / 07932046897 for information or to attend.

25 September 2007, 10am – 12

CYPSP Children's Trust Board (members only)

The CYPSP Children's Trust Board is the primary body for formulating strategy and making decisions. The Children's Trust Board is made up of key representatives from the Council, Health, Social Care, Children and Young People's Service, Schools, Police, Housing and the Voluntary Sector. The Children's Trust Board meets six times a year.

10 October 2007

Contact us

If you have any questions or comments about the TAC or the CYPSP, email the team at tac@lambeth.gov.uk

OR write to us at:

Team Around the Child
 7th Floor, International House,
 Canterbury Crescent, Brixton
 London SW9 7QE

Lambeth NHS
 Primary Care Trust



South London and Maudsley NHS Trust

connexions
 CENTRAL LONDON

METROPOLITAN POLICE Working together for a safer London
 LAMBETH

1
 Lambeth First

SureStart

Lambeth