

Planning News

Public Consultation

142-170 Streatham Hill and 10 Sternhold Avenue

Amendments received for planning and Conservation Area applications (Ref: 08/04307/FUL and 08/04308/CON)

Lambeth Council has received amendments for the planning and Conservation Area applications for a mixed use redevelopment of the former Megabowl and Caesars Nightclub sites.



Proposed view looking south along Streatham Hill

Please provide your comments by 1st September 2009

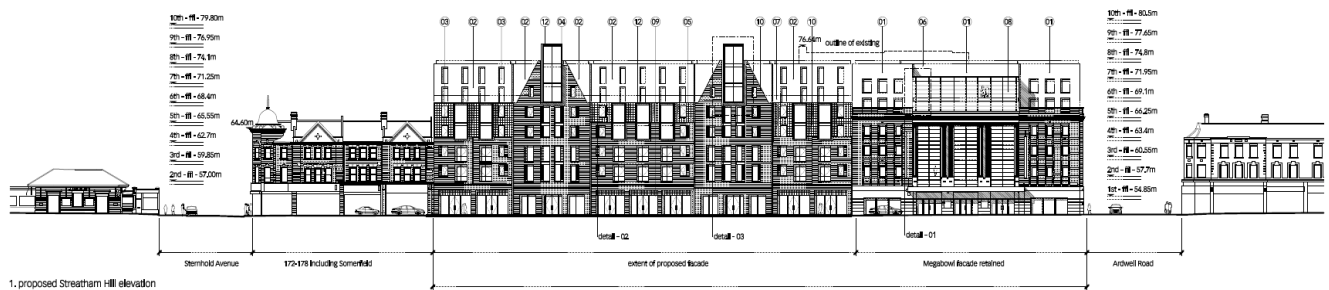
Changes to floor areas, residential element and parking

| Floorspace type | Original submission (November 2008) | Revised submission (June 2009) | Change |
|-----------------|-------------------------------------|-----------------------------------|-----------------------------------|
| Residential | 286 units | 262 units | - 24 units |
| Retail | 2,970m ² | 3,155m ² | + 185m ² |
| D1 Community | 191m ² | 183m ² | - 8m ² |
| D2 Leisure | 839m ² | 840m ² | + 1m ² |
| Parking | 92 car spaces 276 cycle spaces | 91 car spaces 282 cycle spaces | - 1 car space + 6 cycle spaces |

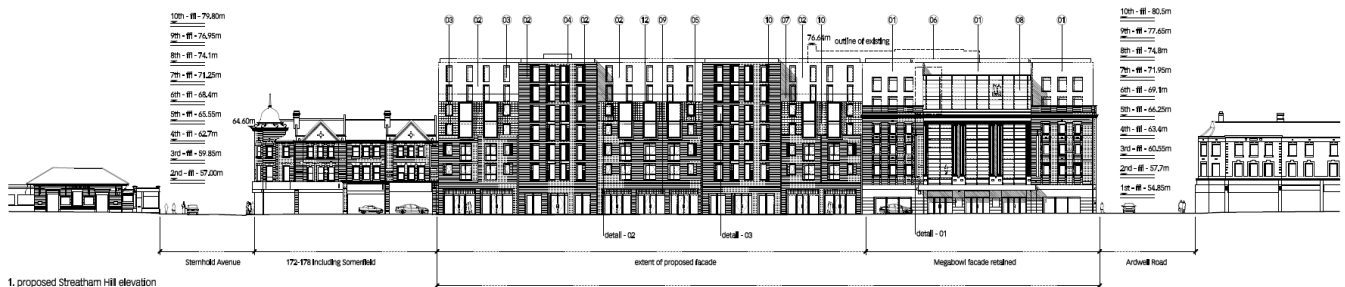
Summary of design changes

- Alterations to Streatham Hill frontage, including removal of gable/lantern structures and squaring-off of gable ends on top floor levels.
- Reduction in height of Ardwell Road frontage by two storeys
- Alterations to residential accommodation on Ardwell and Blairderry Road
- Replacement of lower ground floor residential areas with retail space on Ardwell Road

November 2008 submission



Revised submission



How to obtain further information

The application, associated documents and comments form can be viewed on the Council's website www.lambeth.gov.uk/planning or in person at Streatham Library or at the Town Planning Advice Centre, Phoenix House, 10 Wandsworth Road, Vauxhall, London, SW8 2LL

Please provide your comments by 1st September 2009.

Contacts

Please address all correspondence to Jonathan Woolmer at Lambeth Planning, First Floor Phoenix House, 10 Wandsworth Road, Vauxhall, London, SW8 2LL (Tel. 020 7926 1228) or alternatively by email to jwoolmer@lambeth.gov.uk.