

F A I T H in Lambeth

Lambeth Faith Groups Newsletter

Issue 14, July 2009

WELCOME TO THE SUMMER EDITION OF FAITH IN LAMBETH.

Lambeth Council and the Faith in Lambeth Network would like to extend special thanks to everyone who contributed to this edition of Faith in Lambeth. We hope you enjoy reading it.

Highlights in this Edition

- Faiths Together in Lambeth
- Single Equalities Scheme
- A Word from Cllr Rachel Heywood
- Safeguarding Children in Places of Worship
- Lambeth Mobile HR & NX
- Family Forum
- Feedback from Faith events
- Notice Board
- Dates for Your Diary
- Funding and Freebies

For any additional information on the articles featured in this newsletter or if you would like to highlight any projects you are involved with, contact **Dinah-Mary Allotey** on 020 7926 2664 or email dmallotey@lambeth.gov.uk
www.lambeth.gov.uk/faithinlambeth

The next newsletter will be October/November. If you would like to contribute to the next edition please send your articles in by Thursday 1st October.

Faiths Together in Lambeth



Young people at the Bangladeshi Mela 2009 event held in May, with Kate Hoey MP and the principal of Morley College Ms Ela Piotrowska



Representatives from different faith organisations at the Holocaust Memorial Day 2009

Faith in Lambeth

Be Inspired, Be Informed, Be Involved!

Be Inspired – to make a difference

Be Informed – about policy & Council plans




Lambeth

Be Involved – in the political process to influence decision-making that shapes your community and neighbourhood.

Another step towards an Independent Lambeth-wide Faith Network

On 29 April 2009, Faiths Together in Lambeth (FTiL) held a public meeting to inform the wider faith community on progress since the nomination of the interim management committee (IMC) in October 2008.

The Chair, Rev. Stephen Sichel, provided the background to the development of an independent, Lambeth-wide multi-faith organisation. The draft constitution was presented and Saleha Jaffer, honorary secretary, gave the rationale behind the proposed work programme for the first year.

It was felt that FTiL should be a facilitative organisation, co-ordinating faith initiatives and representing the concerns and interests of faith communities to the statutory sector. However, it was also acknowledged there would always be several, thriving multi-faith groups dotted around Lambeth.

There was concern about how a balance would be maintained within the organisation, between corporate and individual membership, given that membership to the organisation was open to both faith groups and individuals of faith who are residents and workers in Lambeth. It was recommended that representatives of faith organisations should carry more weight in the decision-making process than individual members.

The formal launch of Faiths Together in Lambeth will take place 9 July, at 6.00p.m., at the Nettlefold Hall, West Norwood. All are welcome.
RSVP: ftiL@hotmail.co.uk

Single Equalities Scheme

What is an Equalities Scheme?

An Equalities Scheme is a legal duty, which requires the Council to demonstrate how it aims to:

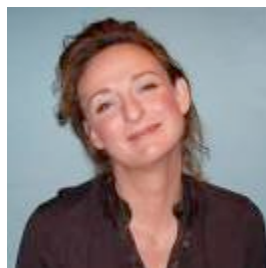
- promote equality of opportunity;
- eliminate unlawful harassment and discrimination, and
- promote good relations between and across different groups, in its role as a Community Leader, Employer and Service provider

What is a Single Equalities Scheme?

Whereas previously equalities schemes focussed upon disability, gender and race, the Single Equality Scheme goes beyond our legal responsibility to incorporate four additional equalities strands, age, religion and belief, sexual orientation and socio-economic factors (poverty and class)

The Equalities and Diversity Unit is currently developing Lambeth Council's Single Equality Scheme for 2009-12. The consultation process will take place between July and October 2009. Consulting on the Single Equalities Scheme will help to identify key issues affecting the additional equalities strands, including faith. The findings from the consultation will assist us in targeting our approach to address areas where inequalities persist, help to shape future policies and practices, and support our progress towards fairer outcomes for affected communities.

We would like to invite you to participate in the consultation process. If you are interested please contact 020 7926 1000 or email Paula Williams at pwilliams3@lambeth.gov.uk. More details about the consultation events will be available soon.



**A word from
Councillor Rachel
Heywood,
Cabinet Member,
Culture and
Communities**

Last weekend I attended the First Holy Communion of my god daughter Ruth, in a huge North London church. The building was packed with children, their friends, their families and neighbours and the atmosphere was one of celebration. It was clearly a momentous occasion for the children involved. Ruth is a lucky girl with a lovely family surrounding her, but I left the service thinking how very important our families in faith are, and how they offer something that we might not find elsewhere.

And of course when faiths come together their ability to change lives and to create an environment of safety and possibility is tremendous. I am very pleased indeed that we will be celebrating the launch of 'Faiths Together in Lambeth' on the 9th July – the culmination of a piece of work led by representatives of many faiths in the borough to identify the best sort of structure

to support work between our different faiths, and to champion faith interests with statutory groups including the council. I would like to offer my thanks to all those who took part in this and I look forward to hearing the recommendations.

A photograph on the front of this newsletter shows Kate Hoey MP and others at the recent Bangladeshi Mela, organised with the support of the Active Communities Team. In April I took on a new role and am now the Cabinet Member for Culture and Communities – meaning that I will continue to do the work I have been involved in for a while, including faith and equalities, but that I am also now responsible for cultural services. I think there are great opportunities in bringing these areas together. Those celebrations which showcase different cultures, and which enable us all to understand a little more about each other are never just parties or simple gatherings, but important tools to build cohesion amongst the many different communities – including those of faith – of which we are so rightly proud. The occasions at which we mark times of significance for our different faiths – Eid, Holocaust Memorial Day, Diwali – are an essential part of the glue that binds this borough together and I will do everything I can to support our communities to make sure these happen in the future. I'd also like to thank all of you who have worked hard to make these events happen, and I look forward to seeing many of you at another one very soon.



Working Together to Safeguard Children in Lambeth – Play Safe

Summer is here and some of you will be running summer schemes, schools or activities for children and young people. Children's activities of 14 days or less in any 12 months period do not have to be registered with OFSTED. However, you will need to inform OFSTED at least two weeks prior to the start of the activities.

- Do you know that you need to register play activities of more than 14 days with OFSTED?
- Have you done a risk assessment of planned activities for play services?
- Have you done an enhanced Criminal Records Bureau (CRB) check on your play workers? Both volunteers and paid workers have to be CRB checked.

Safeguarding children is everybody's responsibility and Lambeth Council is committed to promoting the well-being of children. Churches, mosques, temples, other places of worship and faith-based organisations play a central role in the lives of families, parents and children.

Places of worship and faith based organisations that work with children need to have appropriate arrangements in place for safeguarding and promoting the welfare of children. These should include safer recruitment procedures and training staff and others, paid or unpaid, to know how to report concerns that they may have about the children they meet or work with.

If you would like more information on safeguarding children please contact any of the details below. LSCB on lscb@lambeth.gov.uk. Faith Communities Engagement Officer Email: dmallotey@lambeth.gov.uk Tel: 0207 926 2664 / 07951 921 220

Future Training dates:

Wednesday 5 August 2009, 12.30 - 5pm

Tuesday 20 October 2009, 12.30 - 5pm

Monday 16 March 2010, 12.30 - 5pm

Venue: tbc

Lambeth Mobile HR & NX

Why Lambeth

The Mobile Harm Reduction and Needle Exchange service operates on foot and from a specifically designed van. Each borough has a percentage of problematic substance users. When we refer to substance users we are referring to people who misuse drugs and alcohol. St Mungo's has been commissioned by Lambeth Primary Care Trust to provide a Mobile Harm Reduction & Needle Exchange Service within the borough to substance users. Being mobile is all about going to the streets of Lambeth and addressing frontline issues.

What does 'mobile' mean

Delivering services through a specially equipped van, with the space and facilities to provide a needle exchange service and also allow for a nurse to come on board and to address certain health care issues a client may have or refer them to appropriate treatment for more serious conditions. The service is also carried out on foot which allows the project to reach clients who might not be aware of the needle exchange service available to them. Presently the areas of operation are Brixton, Clapham Common, Waterloo and

Vauxhall. In addition to this we provide home visits for individuals who are unable to leave their homes due to disabilities.

For more information please contact the Nx Hotline on **07920 701 264**.

Family Forum

The Prodigals Family Forum meetings and workshops are about making a positive difference to the lives of teenagers and their families. In helping to maintain a loving, nurturing and protective home environment each session has been carefully crafted with parents in mind, giving them the space to freely explore ideas, learn new skills and try other methods and approaches. The forums and workshops are simply a great place to be, where parents can be listened to and feel supported, encouraged, more confident and inspired. See the diary section for event dates.

PARENTS of TEENAGERS
in transition to adulthood

"How can I encourage my teenager to make the right choices?"

For support, inspiration and encouragement
join our **FREE** and friendly interactive
Family Forum

To register for these **FREE** sessions or book your
place on our parent workshops

Call now on **020 7926 4207**
or email: gkhurana@lambeth.gov.uk

Spaces are limited, so book early to avoid disappointment!

Supported by:

Lambeth

THE PRODIGALS
Education Trust

Buddhist Festivals, *Robin Bath*

Anyone who has been to South East Asia or other far flung Buddhist countries may have encountered the rich and colourful ceremonies that unite both the religious and secular communities. The

celebrations often spill into the streets with a riot of colour, prayer flags a flutter, offerings piled high and young and old joining in with the familiarity of the tradition.

When Buddhism came to the west for the most part the teachings were emphasized more at first and the ceremonies were slowly introduced by the visiting teachers where they felt it appropriate. The significance of the ceremonies was taught revealing their spiritual roots rather than as a social spectacle, showing where the festival dates marked the life of the Buddha. But of course there is a delight in making these occasions social too and now many of the established Buddhist Centres in the UK have calendar events that echo the tradition of their lineage. There are many Theravada centres in the UK that hold Shrilankan, Thai, Burmese and Vietnamese Buddhist festivals like **Wesak** that are enthusiastically supported by the lay community. These certainly continue the colourful cultural significance.

Here at Jamyang Buddhist Centre in our Tibetan tradition we recently celebrated **Saka Dawa**, the Enlightenment Day of the Buddha, and the prayer hall was bedecked with hundreds of shimmering night lights and a profusion of fresh flowers. Westerners may still struggle with chanting the verses in its original form, but the resonating effect is wonderful to share. In the evening we invited the Tibetan community in London to come and join the festival and add their authentic voice to the prayers.

Whenever we have a festival one of the lovely things to reflect is that we can make sense of the occasion through our senses. The flowers and incense awaken our sense of smell, the candles and light for sight, the tangibles and tastes of the food offerings and hopefully the tuneful chants for sound. These all combine to awaken the mind to the real benefit of a celebration that lifts the spirit and revitalizes our life.

Robin Bath, Jamyang Buddhist Centre

Feedback From Faith Events

Gatton Muslim School / Holy Trinity CE Exchanges, *Sarah Thorley*

On June 9 members of Lambeth SACRE (Standing Advisory Council for Religious Education) held their meeting at Gatton Muslim School in Tooting.

Headteacher, Mrs Safia Basith, welcomed us with some delicious refreshments and then she gave us a tour of the school. Everybody was very impressed with the building and resources. The many displays of children's work demonstrated a very high standard of achievement and also the spiritual and ethical ethos of the school. There were examples of learning about all the world religions as well as specific Islamic studies. Mrs Basith joined the meeting for a short discussion about a chapter in the recently published book 'Together and Different' in which the story of the seven years of Gatton/Holy Trinity schools exchanges is recounted.



This academic year, Gatton/Holy Trinity exchanges have included joint visits to Holy Trinity Church and Gatton Road Mosque, a picnic in Brockwell Park, swimming in Gatton School pool, a Signs and Symbols trail in Southwark Cathedral and a walk along the River Thames and over the Millennium Bridge - and a football match is planned before the end of term.



We all really look forward to the next visit. Pupils have played together, worked together, learned to write their names in Arabic and to count to 10 in Urdu, planted daffodil bulbs in Holy Trinity Peace Garden and been on a road safety walkabout.

Notice Board



Faiths in Action is a £4 million grants programme open to faith, interfaith, voluntary and community organisations.

Faiths in Action Round 2 will open on 1 July 2009. Guidance notes and application forms will be available on 1 July. Please visit the Community Foundation website for more information at www.cdf.org.uk.
Email: fundingadmin@cdf.org.uk
Helpline: 01223 400 341

People First Expos are back!

After the success of People First Expos in 2008, the Council and the community have designed another exciting programme for 2009. PFEs are designed with the community to encourage local participation in neighbourhood matters, meet local councillors and access useful information from community organisations and service providers. Expos are also about having fun. They allow people from different social, cultural, economic and faith backgrounds to come together to participate in activities and enjoy experiences locally.

2009 Time table

Streatham – 4 July, Streatham Common
Stockwell – 26 September, Larkhall Park
North Lambeth – 10 October, Waterloo Action Centre.

For more information please contact Lambeth Active Communities Team on 0207 926 4613.

Dates for your Diary

Sunday 5 July 2009, 12pm to 5 pm

Feeling Stressed - Free entrance
Peace in the City at Jamyang Buddhist Centre

Jamyang Buddhist Centre, one of London's longest established Tibetan Buddhist centres, is offering quiet days of peace and relaxation right in

the heart of the city. Everyone, from all walks of life and of all ages, is invited to be pampered at Jamyang Buddhist Centre. Free sessions of meditation and relaxation will be led at hourly intervals throughout the day and there will be an opportunity to sample a range of complementary therapies from reflexology to Indian head massage.

Come and enjoy the Jamyang experience for yourself on Sunday 5 July 2009.

Contact details: Jamyang Buddhist Centre, The Old Courthouse, 43 Renfrew Road, London, SE11 Esther Garibay (PR officer) spc@jamyang.co.uk Tel: 020 7820 8787, www.jamyang.co.uk.



Contacts: Sarah Thorley on 0208 674 5447 or Jean Cousens on 0208 547 5023.

South London Inter Faith Group Scriptural Explorations – a pilot project

Thursday 9 July, 2.30pm to 4pm

Theme: **Hospitality**

Scripture texts to be presented from:
Buddhism, Hinduism, Islam

Thursday 6 August, 2.30pm to 4pm

Theme: **Prayer**

Scripture texts to be introduced from:

Jainism, Judaism, Sikhism

As far as possible, texts will always be introduced by a person belonging to that particular faith. English translations of texts will be available for all participants.

Venue: Streatham Friends Meeting House, Redlands Way, Roupell Park Estate, Brixton Hill, SW2 3LU

Contact: Alan Gadd, 020 8678 8977
secretary@southlondoninterfaith.org.uk

Family Forum Monthly (Evenings 6:30pm - 8:30pm)

2009: July 30th; August 27th; September 24th; October 29th; November 26th; December 17th
Come and share your ideas and experiences, be listened to and feel empowered.

Venue: South London YMCA, 40 Stockwell Road, Stockwell SW9 9ES

Family Forum Workshops (All Day)

10th July 2009 - Independence vs Roles & Responsibility
11th September 2009 - Right to be Heard, Valued & Respected
13th November 2009 - Talking to your Teenager

This series of **FREE** workshops offers parents practical help and support to enhance their relationship with their teenagers. **Venue to be confirmed.** Call 0207 926 4207 for details.

Lambeth Peace Week 20 – 27 September 2009

The theme for Peace Week 2009 is **Unity**. Activities will be held from Sunday 20th to Sunday 27th September. For more details email peacemonth@lambeth.gov.uk.

Sunday 20 September 3pm to 5pm

Mutifaith Peace Picnic, St Matthews C E, SW2, Brixton Hill (opposite Lambeth Town Hall)

The peace picnic is being held at the southside of the grounds at St Matthews and is organised in partnership with Faiths Together in Lambeth. If you would like to get involved or know more about the event please email fitil@hotmail.co.uk or dmallotey@lambeth.gov.uk. Alternatively, you can call Dinah-Mary Allotey on 0207 926 2664/07951 921 220.

**Holy Days and Festivals
(July 2009 – October 2009)**

July 2009

Tuesday	7	Dharma Day Buddhist
Thursday	9	Martyrdom of the Bab Baha'i
Thursday	23	Haile Selassie I Rastafari
Saturday	25	St James the Great Day Christian
Thursday	30	Tisha B'Av Jewish

August

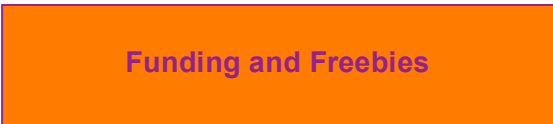
Wednesday	5	Raksha Bandhan Hindu
Friday	14	Krishna Janmashtami Hindu
Saturday	15	Assumption of Blessed Tuesday Catholic Christian
Sunday	22	Ramadan starts Islam

September

Friday	11	Ethiopian New Year's Day Rastafari
Saturday	19	Rosh Hashshana Jewish Navaratri Hindu
Monday	21	Eid al Fitr Islam (Ramadan ends) International Day of Peace Inter faith
Monday	28	Yom Kippur Jewish Dasera Hindu

October

Saturday	3	Sukkot Jewish
Sunday	11	Simchat Torah Jewish
Tuesday	17	Diwali Hindu
Friday	20	Birthday of the Bab Bahai Installation of the Scriptures as Guru Granth Sikh



Safer Homes Fund

The Home Office have launched a new fund to increase home security and reduce burglary rates. The £6m pot is called the Safer Homes Fund. Voluntary and community sector organisations are encouraged to make applications to this fund for revenue grants of between £10k and £100k. For further information and/or support with your application, please email Sarah Bishton, at, sarah.bishton@communitymatters.org.uk or call 0207 837 7883.

Priority activities include:

1. Handy person schemes

- 2. Community programmes that focus on home security; cohesion activities through arts, festivals, sports, etc**
- 3. Peer to peer, e.g. mentoring, befriending**

For full guidance and application forms please visit www.grantsadmin.co.uk/saferhomes

Deadline for all applications is 31st July 2009.

Mercers Trust currently supports charitable work in the following fields:

- Care for the elderly
- Education
- Welfare
- Church and faith

Most of the Company's grant making falls within the three categories of education, care for the elderly and general welfare. For full details about programmes, guidelines and how to apply, please visit the website at www.mercers.co.uk, call 0207 726 4991 or email mail@mercers.co.uk.

Trust for London supports new and emerging small voluntary organisations that benefit people and communities in London. Funding may be used to cover general cost of running an organisation, but the Trust does not cover full time staff salaries in full or part time. TFL will fund projects which have one (or more) of the following aims:

- To challenge discrimination faced by disabled people;
- To promote the inclusion and integration of recently established communities;
- To address new and emerging needs.

Please ring 0207 606 6145 for an application pack or email info@cityparochial.org.uk.

Awards for All: Minimum £300 – Maximum £10,000. Awards for All fund projects that bring people together to take part in and enjoy a wide range of community activities. If your project helps to improve people's lives, encourages more people to get involved in their local community or boosts skills and creativity then it is the sort of thing that will be funded. Applications are welcome from all communities.

Deadline: Applications can be made at anytime. Applicants need to send their constitution, original bank statements and annual accounts with the form. For an application pack please call 0845 600 20 40 or visit www.awardsforall.org.uk.

If you would like a summary of this information in community languages, or in other formats such as large print, Braille, or on disk, please contact Lambeth Adults and Community Services on 020 7926 5555.

Spanish

Si desea esta información en otro idioma, rogamos nos llame al 0207 926 5555

Portuguese

Se desejar esta informação noutro idioma é favor telefonar para 0207 926 5555

French

Si vous souhaitez ces informations dans une autre langue veuillez nous contacter au

0207 926 5555

Bengali

এই তথ্য অন্য কোনো ভাষায় আপনার প্রয়োজন হলে অনুগ্রহ করে ফোন করুন

Twi

Se wope saa nkaeboy yi wo kasa foforo mu a fre 0207 926 5555

Yoruba

Tí ẹ ba fẹ imoràn yìí, ní èdè Òmiràn, ẹjẹ. ẹ kàn wà l'ágogo 0207 926 5555

CONTACT US

Dinah-Mary Allotey

London Borough of Lambeth
Active Communities
3rd Floor, Phoenix House
10 Wandsworth Road
London SW8 2LL
Tel: 020 7926 2664

Webpage: www.lambeth.gov.uk/faithinlambeth

Alternatively, email Dinah-Mary at dmallotey@lambeth.gov.uk.

Faiths Together IN LAMBETH

We are happy to announce the formal launch of 'Faiths Together in Lambeth', an independent body fostering constructive relationships among faith communities and promoting multi-faith involvement in civic life.

Join us on:

**Thursday 9th July 2009
6.00pm–8.00pm**

Nettleford Hall
West Norwood Library
1 Norwood High Street
SE27 9JX

Travel by rail: West Norwood Station (1 minute's walk)
Travel by bus: 2, 68, 196, 315, 322, 432, 468, X68

RSVP: ftil@hotmail.co.uk

**Faiths Together in Lambeth,
Interim Management Committee:**
George Ansah, Sally Barraud, Vidur Dindayal, Alan Gadd
Phillip Ginsbury, David Hart, Saleha Jaffer (Secretary)
Malachie Munyaneza, Samarjit Roy, Stephen Sichel (Chair)
Roger Wright (Treasurer)