

SMOKEFREE

WHAT WILL IT MEAN FOR ME?

A GUIDE FOR YOU ON THE NEW
LAWS AFFECTING SMOKING

SMOKEFREE LEGISLATION IS COMING IN FROM 1 JULY 2007

ALL ENCLOSED PUBLIC PLACES AND WORKPLACES WILL BE HEALTHIER PLACES TO VISIT OR WORK IN.

From 1 July, smoking in these places will be a thing of the past and against the law. This includes all offices, warehouses, workshops, pubs, bars, clubs, theatres, shops, restaurants, taxis, minicabs, hotels and hostels. The new law also bans indoor smoking rooms at work. It will ensure a healthier environment, so everyone can socialise, relax, travel, shop and work free from secondhand smoke.



I don't smoke so what will it mean for me?

It means that when you go to work, shop or out for a drink or a meal people will not be able to smoke. You won't have to breathe somebody else's second hand smoke and this will help create a cleaner, healthier environment for everyone.

The evidence against second hand smoke is clear. It causes lung cancer, heart disease and other illnesses and triggers asthma attacks. It is estimated that smokefree places will save thousands of lives over the next decade.

Lambeth Council and Lambeth Primary Care Trust will be working hard to make sure that the new laws are complied with and that businesses have all the information and help they need to become smokefree from 1 July.



I am a smoker, so what will it mean for me?

You can smoke in your own home and outdoors but you won't be able to smoke indoors in most places where there will be other people. This means that you won't be able to smoke at work or inside shops, restaurants, pubs or clubs or on any transport systems including taxis and minicabs. Smoking rooms at work will no longer be allowed and you will have to smoke outside your building.

There are some exemptions to the new laws for hotels and you will be able to request to stay in a designated smoking room if you wish but you won't be able to smoke anywhere else in the building.

If you live in sheltered accommodation, you will be able to smoke in your rooms but not in any part of the building that is used by other people, such as TV rooms, and common rooms.



Maybe now is the time for me to give up smoking.
Who do I talk to?

It will certainly be more difficult for you to smoke at work and socially from July so now might be the time you decide to give up. Your local doctor's surgery can help you, as can your local pharmacist. Just ask.

There is a national helpline – you can call the **NHS Smoking Helpline** on **0800 169 0169**. They have specialist advisers you can speak to. They can also put you in touch with local services to help you quit. Lines are open daily from 7am to 11pm.

You are four times as likely to be able to quit smoking with support than going it alone, so if you are thinking of quitting, give the helpline a call.

You can visit the website **www.gosmokefree.co.uk** which has an online resource for information to stop smoking and stay stopped.

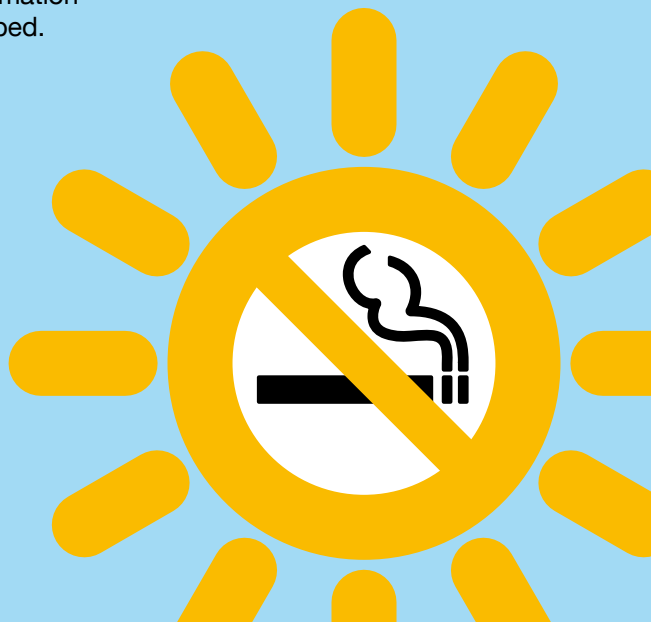


So what are the penalties for smoking in smokefree places?

For smoking in a smokefree place or vehicle – you could receive a fixed penalty notice of £50.

For failing to display a no-smoking sign – a business could receive a fixed penalty notice of £200 and be prosecuted.

For allowing smoking in a smokefree place or vehicle – a business could be fined up to £2500.





Where can I get more information?

Information is available at the council's website www.lambeth.gov.uk/smokefree and at the Government's Smokefree England website at www.smokefreeengland.co.uk

You can call the Smokefree England Information Line on **0800 169 1697** or Lambeth Council's Smokefree Team on **020 7926 6109**.

You can email any questions you have to Lambeth Council's Smokefree Team at smokefree@lambeth.gov.uk

Portuguese

Se desejar esta informação noutro idioma é favor telefonar para 020 7926 6109

Bengali

এই তথ্য অন্য কোনো ভাষায় আপনার প্রয়োজন হলে অনুগ্রহ করে ফোন করুন 020 7926 6109

Twi

Se wope saa nkaeboy yi wo kasa foforo mu a fre 020 7926 6109

Yoruba

Tí ẹ ba fẹ ìmoràn yìí, ní èdè Òmíràn, ẹjǎ, ẹ kàn wà l'ágogo 020 7926 6109

If you would like this information in large print, Braille, audio tape or another language, please contact us on 020 7926 6109

**Or write to us at
2 Herne Hill Road,
London
SE24 0AU**