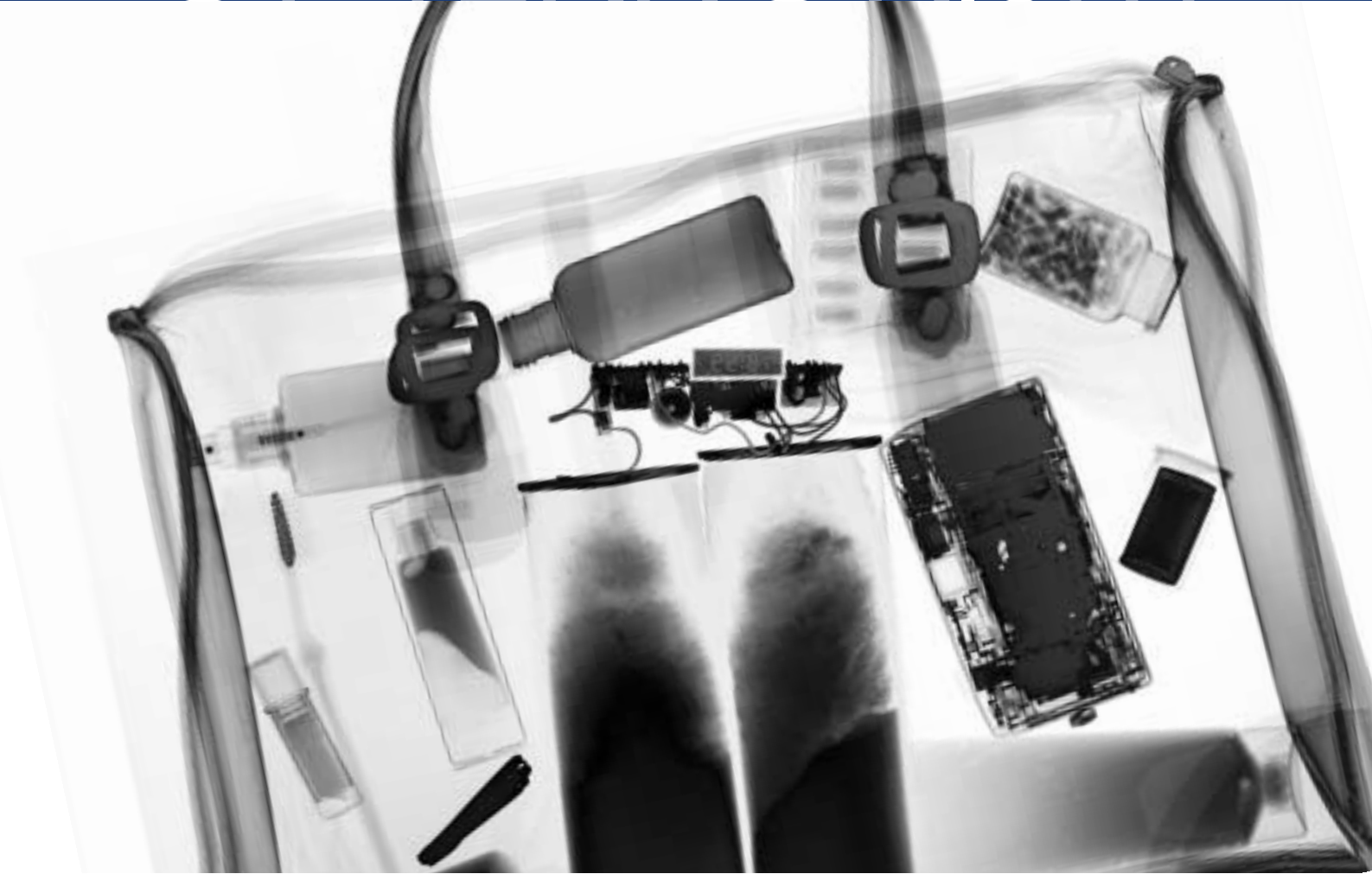


# AWARENESS OF TERRORISM



## AWARENESS OF TERRORISM

### Definition

*Unlawful use of force or violence by person or organised group against people or property with the intention of intimidating or coercing societies or governments often for ideological or political reasons.*<sup>21</sup>

Terrorism can be divided into two elements:

### International

The threat can be to UK interests at home or abroad and can include many forms. At present international events have given rise to fear from terrorism within the UK and in particular areas of national significance.

### Within the UK

The threat is isolated to events within the UK. This can be associated with a particular location or alternatively at current issues, for example Animal Rights.

### What do our statistics tell us?

- FY2003-4 there were 36 separate incidents related to suspect packages/ bomb threats in Lambeth. 10 of these were reported to the British Transport Police (BTP) and related to underground or overland stations
- Seven of these incidents were around Waterloo Station
- July and December were the peak months
- In Lambeth there were 10 incidents attended to by Explosive Officers in FY2003-4 compared to seven in FY2002-3 and 22 in FY2001-2

### What did you tell us?

#### Residents survey

- A minority are using religious fundamentalism to generate a fear factor amongst their peers
- A minority criminal element is using religion as a front, which allows them to further their illegal activities
- 9/11 has had an impact on terrorism and as a result on community cohesion
- The concerns raised with regards to religious fundamentalism was seen as much of a problem by sectors of our BME communities

*'The reason that we got ourselves involved is because we could see five years ago that our young people were getting trapped by some groups who were using Islam to fulfil their heinous designs'*

The threat of international world-wide terrorism is being used as an excuse by others to harass and intimidate communities and is affecting community cohesion. This was implicit in a large number of our focus groups involving both young people and adults.

### What have we done so far?

#### The threat of terrorism

- A series of emergency partnership measures are in place. These are activated in the event of a terrorist incident or specified threat of such an incident. These measures are focused around public safety, reassurance and efficiency of the joint response. These are statutory measures that have been agreed with the Home Office
- A series of emergency planning exercises to test and evaluate effectiveness of incident response plans
- Focused London wide campaigns targeted at public vigilance relating to leaving unattended items in public places and reporting suspicious activities

#### The impact of international terrorism

- A Faith Co-ordinator has been employed to develop and enhance a partnership response to multi-faith issues and improve community cohesion across the borough
- Peace week is being organised in autumn 2004 to improve community cohesion

### Emerging Priorities

- Ensuring that the public are aware that systems are in place for an appropriate multi agency response to a terrorist incident
- The international issues that we currently face are being used to a negative effect on community cohesion in our borough and in the London region
- The positive element of faith and religion needs to be more positively portrayed