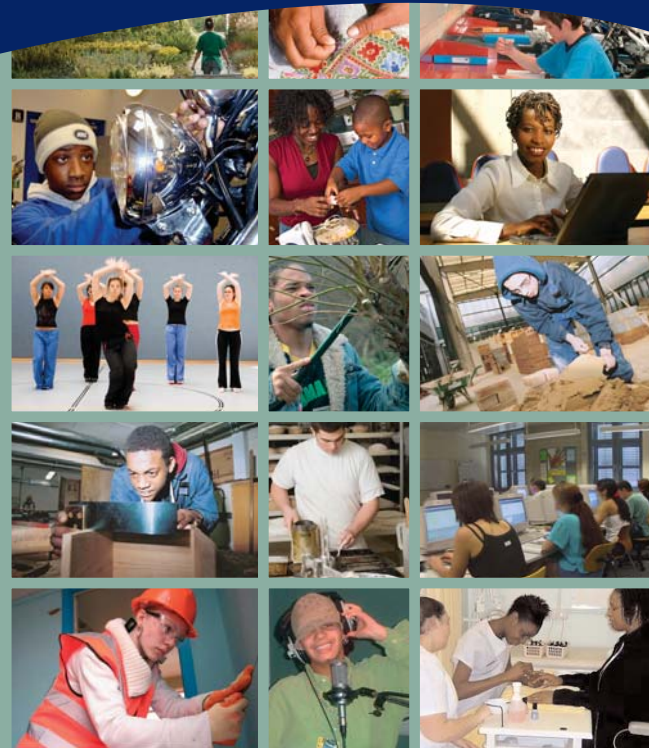




Opportunities for 14 –16 year olds in Lambeth schools

Additional Learning Programmes 2007 – 2009



Opportunities for 14 –16 year olds
in Lambeth schools

Additional Learning Programmes 2007 – 2009



Contents

Page

- ▶ 2 Introduction
- ▶ 4 Construction and the Built Environment
- ▶ 6 Creative and Media
- ▶ 9 Hair and Beauty
- ▶ 10 Engineering
- ▶ 12 Hospitality and Catering
- ▶ 13 Land-based and Environmental
- ▶ 14 Society, Health and Development
- ▶ 16 Additional Information for Schools



► Introduction



Dear student

This guide contains information on courses being made available to all 14-16 year old school students in Lambeth, in addition to those being offered by your own school. If you are accepted onto one of these courses, you will probably need to attend sessions outside school for one or two days a week. This means that for most of the week you will be studying at school, but your school will have made additional arrangements for you to learn with another learning provider, so that you may develop skills and knowledge in an area that interests you.

The programmes offered in this guide generally last for one or two years and lead to a qualification recognised by employers in that field. You will normally spend 3-6 hours a week on a particular programme and will probably be in a teaching group with students from other schools.

What are the advantages?

- a greater choice of subjects to choose from
- the opportunity to gain qualifications in a subject that interests you
- the opportunity to find out about progression routes and training required in this area of work

This guide tells you about:

- the different programmes available
- qualifications you may gain
- content of the teaching programmes
- when and where they take place
- how you may progress on successful completion of a course

Who are they for?

Each programme has its own entry criteria, which describe the skills and attitudes required for that course. In general you should:

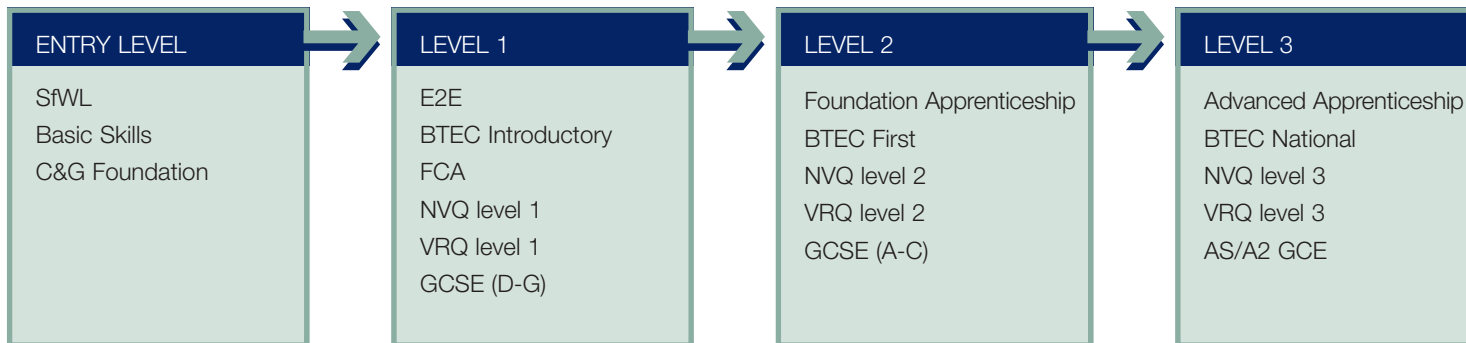
- have a genuine interest in the area you have chosen
- be prepared to work hard
- be mature enough to cope with being in an environment other than your school

You may be asked to take tests or carry out practical activities by some providers to demonstrate that you are ready to work at a level required by the course.

Making your choice

Discuss your options with your parents and teachers. For the latest information on courses available, go to: **www.lambeth14-19.co.uk**

► Progression Routes



The qualifications offered in this brochure are recognised and valued by employers. You may not have heard of some of these if your school only offers GCSEs. The diagram above shows how you may progress in one area by moving up the levels. The levels are not linked to age, but to the level of skills and knowledge you have developed. An individual progresses through the levels at a rate that suits them.

► Glossary

ABC = Awarding Body Consortium	GCE = General Certificate of Education
BTEC = Business and Technician Education Council	GCSE = General Certificate of Secondary Education
C&G = City and Guilds	NCFE = Northern College of Further Education
CIEH = Chartered Institute of Environmental Health	NVQ = National Vocational Qualification
E2E = Entry to Employment	OCN = Open College Network
EAL = EMTA Awards Ltd	OCR = Oxford and Cambridge and RSA
EDI = Educational Development International	SfWL = Skills for Working Life
e-quals = IT qualifications	VRQ = Vocationally Relevant Qualification
FCA = Foundation Construction Award	VTCT = Vocational Training Charitable Trust

► Construction and the Built Environment

On gaining a qualification

students may sign up for an apprenticeship or enrol for courses at the next level in the same or related area, eg from plumbing you could progress into engineering activities.

You could work on

construction of new buildings, maintenance and repair of existing buildings, furniture manufacture, interior design, conservation of very old buildings or construction of sets for theatre, film, television or fashion. You could work for a company, or as many in this industry do, be self-employed.



► Construction and the Built Environment

Title and content	Qualification and level	Hours of learning	Day and venue	Entry requirements
<p>Carpentry and Joinery</p> <ul style="list-style-type: none"> ■ Handling and storing resources ■ Contributing to work relationships ■ Contributing to providing working platforms ■ Preparation and use of portable power tools ■ Maintenance and use of woodworking hand tools ■ Use of basic wood jointing techniques 	<p>CITB / C & G Foundation Construction Award in Carpentry and Joinery</p> <p>ENTRY LEVEL and LEVEL 1</p>	<p>5 hrs per week</p> <p>36 wks per year</p> <p>1 or 2 years</p>	<p>Any day 9.00am – 3.00pm</p> <p>Newstart, Ilderton Road, SE15</p>	<ul style="list-style-type: none"> ■ Good practical skills ■ Interested in construction
<p>Construction</p> <ul style="list-style-type: none"> ■ Carpentry and joinery ■ Brick-laying and cement-mixing ■ Painting and decorating ■ Knowledge and understanding of building crafts 	<p>C & G Construction Foundation Award</p> <p>LEVEL 1</p>	<p>5 hrs per week</p> <p>36 wks per year</p> <p>2 years</p>	<p>Day to be confirmed 10.00am – 4.00pm</p> <p>Lambeth College, Vauxhall Centre</p>	<ul style="list-style-type: none"> ■ KS3 SATs at 4 or above ■ Good numeric ability ■ Good practical skills ■ Interested in construction

► Creative and Media

On gaining a qualification

students may sign up for an apprenticeship or enrol for courses at the next level in the same or related area, eg from fashion you could progress into textile design or retail studies.

You could work in

fashion, theatre, film, video, advertising, manufacturing, museums and art galleries, graphic design, website design, interior design, art and drama therapy, education, youth and community work.



► Creative and Media

Title and content	Qualification and level	Hours of learning	Day and venue	Entry requirements
<p>Multimedia</p> <ul style="list-style-type: none"> ■ Using digital techniques and technology ■ Exploring materials, techniques and processes used by multimedia professionals ■ Using 2-D and 3-D techniques to communicate ideas 	<p>BTEC First Certificate in Art and Design (Multimedia)</p> <p>LEVEL 2</p>	<p>5 hrs per week</p> <p>36 wks per year</p> <p>1 year</p>	<p>Friday 9.00am – 4.00pm</p> <p>Southwark College, Bermondsey Centre</p>	<ul style="list-style-type: none"> ■ Interest in chosen subject ■ Creativity and imagination ■ Capable of passing a level 2 qualification ■ Literacy and numeric ability at entry level 3/level1
<p>Foundation in Fashion</p> <ul style="list-style-type: none"> ■ Decorative sewing ■ Sewing skills and domestic sewing machine ■ Free handcutting and making ■ Essential skills for career development 	<p>OCN Certification in Fashion and Sewing Skills</p> <p>LEVEL 1</p>	<p>4 hrs per week</p> <p>36 wks per year</p> <p>2 years</p>	<p>Tuesday 10.00am – 3.00pm</p> <p>SMWA Education Resource Centre, Peckham SE15</p>	<ul style="list-style-type: none"> ■ Interested in learning to sew and decorate garments ■ Considering a future in the fashion industry ■ Able to observe health and safety considerations in workshop ■ Respectful attitude towards others

► Creative and Media

Title and content	Qualification and level	Hours of learning	Day and venue	Entry requirements
<p>Performing Arts</p> <ul style="list-style-type: none"> ■ Performance in dancing, acting, singing ■ Writing plays ■ Choreography 	<p>BTEC Introductory Certificate in Performing Arts</p> <p>LEVEL 1</p>	<p>5 hrs per week</p> <p>36 wks per year</p> <p>1 year</p>	<p>Wednesday 1.00pm – 4.00pm and Friday 9.00am – 12.00pm</p> <p>Southwark College, Bermondsey Centre</p>	<ul style="list-style-type: none"> ■ Interest in chosen subject ■ Physical fitness ■ Ability to take constructive criticism and to practise and persevere ■ Capable of passing a level 1 qualification ■ Literacy and numeric ability at entry level 2/3
<p>Dance</p> <ul style="list-style-type: none"> ■ Details to be confirmed 	<p>LEVEL 2</p>			



► Hair and Beauty

On gaining a qualification

students may sign up for an apprenticeship or enrol for courses at the next level in the same or related area, eg from beauty therapy you could progress into health-related occupations and complementary therapies.



You could work in

hairdressing or beauty salons, hotels, holiday resorts, spas, cruise ships, fashion styling, theatre and film make-up and special effects.

Title and content	Qualification and level	Hours of learning	Day and venue	Entry requirements
<p>Nail and Beauty Therapy</p> <ul style="list-style-type: none"> ■ Manicures ■ Pedicures ■ Nail art ■ Make-up for day and evening <p>Possibility of progressing onto a level 1 course at Lambeth College in year 11</p>	<p>TBG Learning Certificate of Completion</p>	<p>5 hrs per week</p> <p>36 wks per year</p> <p>1 year</p>	<p>Friday 9.30am – 3.00pm</p> <p>TBG Learning, Lyham Road, SW2</p>	<ul style="list-style-type: none"> ■ Interested in a career involving beauty therapy ■ Able to work sensibly in a training environment ■ Keen and motivated

► Engineering

On gaining a qualification

students may sign up for an apprenticeship or enrol for courses at the next level in the same or related area, eg from engineering you could progress into electronics.

You could work in

garages, transport organisations, manufacturing, computer maintenance and repair, domestic equipment and office equipment maintenance, construction, civil engineering, electronics, sound engineering, medical technology and product design.



► Engineering

Title and content	Qualification and level	Hours of learning	Day and venue	Entry requirements
<p>Motorcycle Maintenance and Repair</p> <ul style="list-style-type: none"> ■ Working of brakes, tyres, wheels and cables ■ Working of batteries, light bulbs and wiring ■ Working with colleagues and the public ■ Health and safety in the workplace 	<p>NVQ in Motorcycle Maintenance and Repair</p> <p>LEVEL 1</p>	<p>5 hrs per week</p> <p>36 wks per year</p> <p>2 years</p>	<p>Tuesday 9.00am – 3.00pm</p> <p>Lambeth College, Vauxhall Centre</p>	<ul style="list-style-type: none"> ■ KS3 SATs at 4 or above ■ Appropriate practical skills ■ Interest in working with motorbikes
<p>Engineering</p> <ul style="list-style-type: none"> ■ Work practices in engineering ■ Using and interpreting engineering information ■ Electronic devices and communication applications ■ Engineering workshop techniques for project work ■ Computer aided drawing 	<p>BTEC First Certificate in Engineering</p> <p>LEVEL 2</p>	<p>6 hrs per week</p> <p>36 wks per year</p> <p>2 years</p>	<p>Tuesday 9.00am – 4.00pm</p> <p>Lambeth College, Vauxhall Centre</p>	<ul style="list-style-type: none"> ■ KS3 SATs at 5 or above ■ Numerically competent ■ Good practical and problem-solving skills ■ Interest in engineering

► Hospitality and Catering

On gaining a qualification

students may sign up for an apprenticeship or enrol for courses at the next level in the same or related area, eg from hospitality and catering go into leisure and tourism or the health industry.

You could work in

restaurants, bars, cafés, hotels, holiday resorts, schools, hospitals and catering companies.

Title and content	Qualification and level	Hours of learning	Day and venue	Entry requirements
<p>Hospitality</p> <ul style="list-style-type: none"> ■ Maintaining a safe environment ■ Contributing to effective team work ■ Storing, preparing and cooking food ■ Options from food preparation and cooking, quick service, housekeeping and front office <p>After term one students are placed with an employer for further learning</p>	<p>City & Guilds NVQ in Hospitality</p> <p>LEVELS 1 and 2 plus certificates in Food Hygiene and Health and Safety</p>	<p>5 hrs per week</p> <p>36 wks per year</p> <p>2 years</p>	<p>Tuesday 9.00am – 2.30pm</p> <p>HIT Training Blackfriars Road, SE1</p>	<ul style="list-style-type: none"> ■ Good attendance and time-keeping ■ A willingness to develop communication skills ■ Smart appearance ■ A positive attitude to learning ■ SAT predicted results should be 5 5 4



► Land-Based and Environmental

On gaining a qualification

students may sign up for an apprenticeship or enrol for courses at the next level in the same or related area, eg from hospitality and catering go into leisure and tourism or the health industry.



You could work in

garden centres, public parks, hotels, golf courses, zoos, maintaining sports grounds, as a florist or flower arranger, in the food technology industry, in land management or on conservation projects for organisations such as the National Trust or the Forestry Commission.

Title and content	Qualification and level	Hours of learning	Day and venue	Entry requirements
<p>Horticulture</p> <ul style="list-style-type: none"> ■ Working safely and effectively with plants ■ Growing plants from seeds, bulbs and cuttings ■ Establishing and maintaining plants ■ Preventing pests and disease 	<p>NVQ in Horticulture</p> <p>LEVEL 1</p>	<p>5 hrs per wk</p> <p>36 weeks per year</p> <p>2 years</p>	<p>Friday 9.00am – 3.00pm</p> <p>Roots and Shoots, Walnut Tree Walk, Lambeth SE11</p>	<ul style="list-style-type: none"> ■ Interested in the environment and working outdoors ■ Interested in gardening as a career path ■ KS3 SATs at level 4 or above

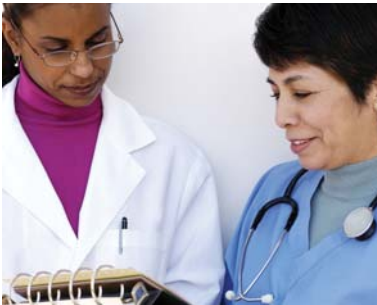
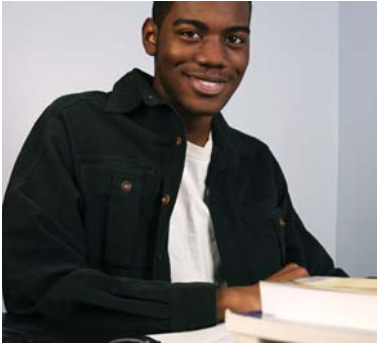
► Society, Health and Development

On gaining a qualification

students may sign up for an apprenticeship or enrol for courses at the next level in the same or related area, eg from health and social care you could go into nursing or the hospitality industry.

You could work in

nurseries, day centres, hospitals, hostels or in local government, providing care for babies, children, young people, the ill, elderly and disabled.



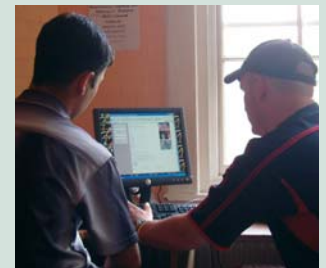
► Society, Health and Development

Title and content	Qualification and level	Hours of learning	Day and venue	Entry requirements
<p>Health and Social Care</p> <ul style="list-style-type: none"> ■ Working in health and social care ■ Developing skills for working in the sector ■ Personal effectiveness ■ Social responsibility 	<p>BTEC First Certificate in Health and Social Care</p> <p>LEVEL 1</p>	<p>5 hrs per week</p> <p>36 wks per year</p> <p>1 year</p>	<p>Wednesday 1.00pm – 4.00pm and Friday 9.00am – 12.00pm</p> <p>Southwark College, Bermondsey Centre</p>	<ul style="list-style-type: none"> ■ Interest in chosen subject ■ Capable of passing a level 1 qualification ■ Literacy and numeric ability at entry level 2/3
<p>Health and Social Care</p> <ul style="list-style-type: none"> ■ Health, social care and early years provision ■ Communication and individual rights ■ Individual needs in health sectors ■ Understanding personal development and relationships 	<p>BTEC First Certificate in Health and Social Care</p> <p>LEVEL 2</p>	<p>5 hrs per week</p> <p>36 wks per year</p> <p>1 year</p>	<p>Wednesday 1.00pm – 4.00pm and Friday 9.00am – 12.00pm</p> <p>Southwark College, Bermondsey Centre</p>	<ul style="list-style-type: none"> ■ Interest in chosen subject ■ Capable of passing a level 2 qualification ■ Literacy and numeric ability at entry level 3 or level 1

Opportunities for 14 –16 year olds
in Lambeth schools

Additional Learning Programmes 2007 – 2009

► Additional information for schools



► Additional information for schools

Teachers' notes

This is a guide to additional learning programmes for 14-16 year olds in Lambeth schools. Schools and learning providers in Lambeth and Southwark are working collaboratively to facilitate a greater range of opportunities for young people and to streamline the procedures for exchange of information.

Extension of the school curriculum:

- The programmes in this brochure are establishing partnerships and processes that will aid the delivery of specialised diplomas
- Courses generally last for two years, but there are some one-year courses available that are suitable for year 10 or year 11 students.
- The majority of programmes lead to recognised qualification such as NVQs and BTECs.
- Learning generally takes place in workshop facilities managed by the learning provider, with an emphasis on learning through practical activities and coursework.
- Some providers have experience of working effectively with learners that have special needs. Providers need to be made aware of learners' needs so that support may be arranged if required.



► Additional information for schools

Schools' responsibilities

- Become familiar with nature of providers and programmes offered
- Discuss choices with students and parents and advise appropriately
- Complete all necessary paperwork for provider including parental consent, emergency contact details, information on medical conditions and educational background of students including any special needs
- Ensure that other studies are not adversely affected through participation in these programmes
- Escort students on initial visits and ensure they familiarise themselves with their new environment
- Communicate any changes in the students' circumstances to the provider, including factors that may impinge on student learning and advance warning of planned absences
- Check electronic registers regularly and follow up concerns
- Work with provider in the event of problems arising
- Visit students on the programmes at least twice a year



► Additional information for schools



Quality criteria

Providers comply with the following conditions:

- FE colleges and training providers are monitored by OFSTED, ALI and the LSC to ensure they provide a safe environment for learners. A risk assessment is undertaken by Trident of voluntary sector and private organisations.
- Risk assessments for all programmes will be made available on the website
- Centres have Approved Centre status from an awarding body to deliver relevant qualifications
- Staff are CRB-checked and approved for working with young people
- Programme outlines/schemes of work are available on the website
- Provider abides by agreed protocols for admissions and exclusions of students onto programmes
- Online registers available on the website are completed on the day of attendance by students

► Additional information for schools

Course name	Provider	See Page	Level of course	Point score equiv (max)	Group size (min – max)	GLH	Cost per year	Lunch arrangements	Other info
Art and Design (Multimedia)	Southwark College	7	Level 2	80 - 110	8-15	180 (1yr)	Approx £900	Canteen on site	
Carpentry and Joinery	Newstart	5	Level 1	not available	24	by negotiation	£1260 (£35 per student per day, invoiced monthly)	Packed lunch or buy off-site	Students may attend more than one day
Construction	Lambeth College	5	Level 1	not available	8-12	360 (2 yrs)	£15,000 per group	Canteen on site	
Engineering	Lambeth College	11	Level 2	80 - 110	15	360 (2 yrs)	£15,000 per group	Luncheon voucher provided	Support assistant provided
Foundation in Fashion	SMWA	7	Level 1	not available	12	140 (1yr)	£1,400	Lunch provided	Support assistant provided
Health and Social Care Introductory Certificate	Southwark College	15	Level 1	38 - 68	8 -15	180 (1yr)	Approx £900	Canteen on site	

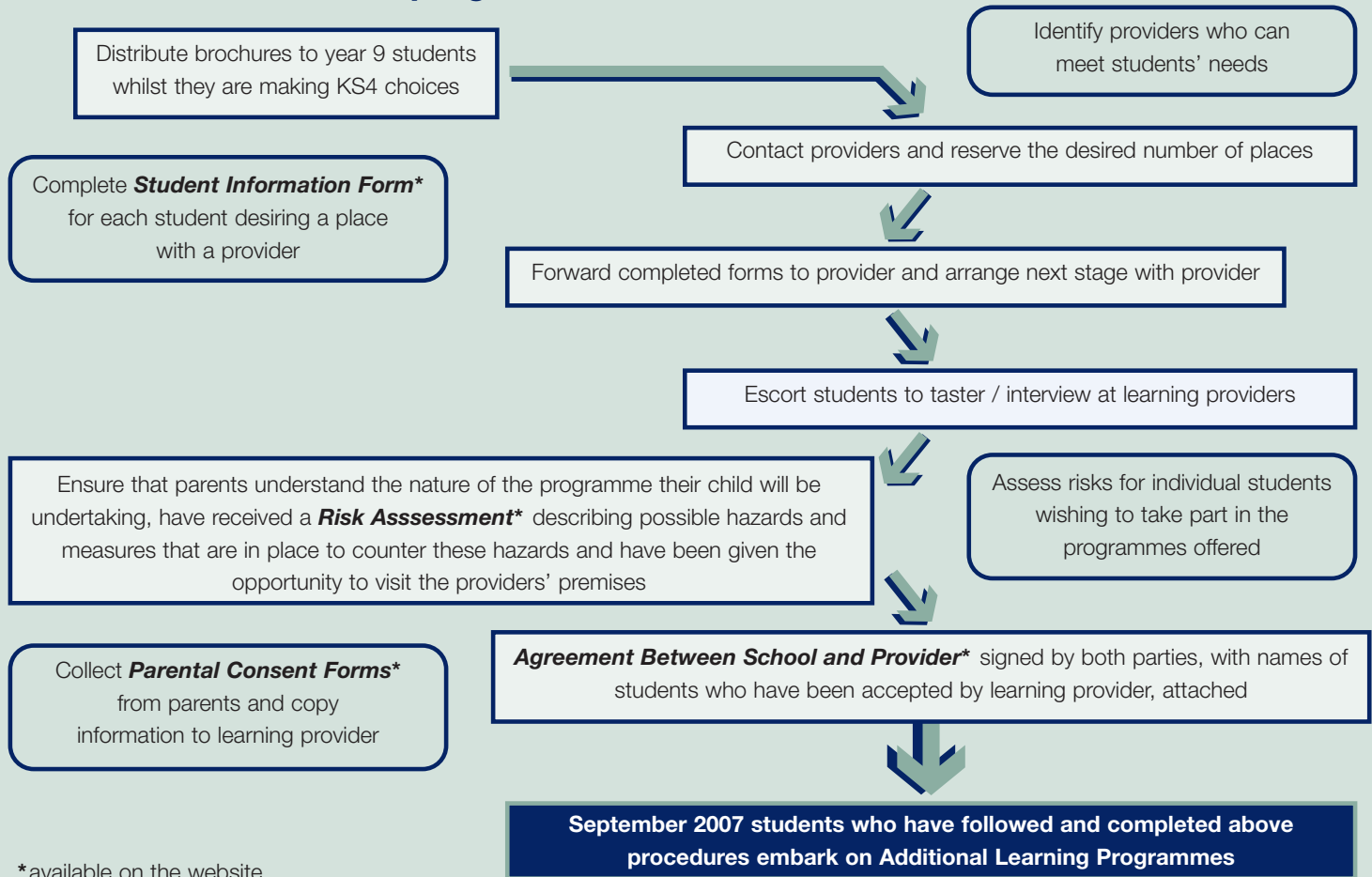
Please note:

Some providers reduce costs if they recruit over the minimum required for the course. Southwark College has provided an estimate of fees, but will confirm these in the summer term.

► Additional information for schools

Course name	Provider	See Page	Level of course	Point score equiv (max)	Group size (min – max)	GLH	Cost per year	Lunch arrangements	Other info
Health and Social Care First Certificate	Southwark College	15	Level 2	80-110	8-15	180 (1yr)	Approx £900	Canteen on site	
Hospitality	HIT Training	12	Level 2	140	15	360 (2 yrs)	£800	Packed lunch or buy off-site	Hours may be 8.00 am to 4.00 pm when on placement
Horticulture	Roots and Shoots	13	Level 1	168	8 -10	360 (2yrs)	£1,500	Packed lunch or buy off-site	Support assistant provided off-site work in nursery and allotment
Motorbike Maintenance and Repair	Lambeth College	11	Level 1	not available	15	140 (1yr)	£15,000 per group	Luncheon voucher provided	Support assistant provided
Nail and Beauty Therapy	TBG Learning	9	Intro Course	not applicable	8 -10	180 (1yr)	£800	Canteen on site	
Performing Arts	Southwark College	8	Level 1	38 - 68	12	180 (1yr)	Approx £900	Canteen on site	

► How to access these programmes



*available on the website

► Additional information for schools

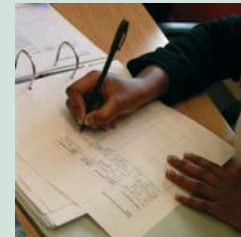
Matching students

The programmes in this brochure offer a different environment to the school environment. They can be beneficial to a variety of students in your school community. They offer students the opportunity:

- To engage in learning, where the emphasis is on practical activities and active engagement with tasks
- To work in a less formal environment than that of a secondary school, requiring the student to accept a greater degree of responsibility for their learning
- To acquire the social skills required to work with a new set of fellow students and adults
- To develop the self-organisational skills necessary to produce coursework for vocational qualifications

The following guidelines should be observed in matching students to programmes:

- Programmes to be made available to all students
- Students embark on the courses by choice and through interest in the chosen subject area
- Parents are supportive of students engaging in a programme
- Students meet the entry requirements specified by the learning provider
- Students may be required to undertake formal literacy and numeric ability tests
- Students can be relied on to attend regularly and punctually and to behave in accordance with the health and safety requirements of the learning provider



Locations



- 1 Lambeth College,
Vauxhall Centre
Belmore Street,
Wandsworth Road,
SW8 2JY.
- 2 TBG Learning
13 – 14 Ellerslie Square,
Lyham Road,
Clapham,
SW2 5DZ
- 3 HIT Training
Blackfriars Road
London SE1 8EN
- 4 Newstart
Ilderton Road
London SE15 1NP
- 5 Roots and Shoots,
Walnut Tree Walk
London SE11 6DN
- 6 Southwark College,
Bermondsey Centre
Keetons Road,
London, SE16 4EE
- 7 SMWA
Bellenden Old School
Bellenden Road
London SE15 4DG



Opportunities for 14 –16 year olds in Lambeth schools

▶ **Lambeth EBP**
2nd Floor
Hopton House
243a Streatham High Road
London SW16 6EY
Telephone 7926 9840
Facsimile 020 7926 9537