

Kennington Park
nature trail

activity pack

This pack belongs to:

identification

Tick any examples you see as you walk around the park.

picture credits: iStockphoto.com



ALDER



BIRCH



MAPLE



YEW



OAK



ROWAN

identification

Tick any examples you see as you walk around the park.

picture credits: iStockphoto.com



BAY



ELM



FIG



GUM



HOLLY



HORSE CHESTNUT

identification

Tick any examples you see as you walk around the park.

picture credits: iStockphoto.com



BLUE TIT



WOODLOUSE



BUMBLEBEE



RED ADMIRAL

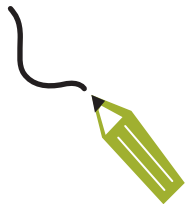


COMMON BLUE



ROBIN

Draw something new you've seen today!



elf / fairy house

Walk around the park and collect as many leaves, feathers and twigs as you can to build a house for an elf or fairy. It can be as small or large as you like.

Where in the park do you want your elf or fairy to live?
Under a tree or in the middle of the grass?

Where will the front door be?

What will you use for the walls?

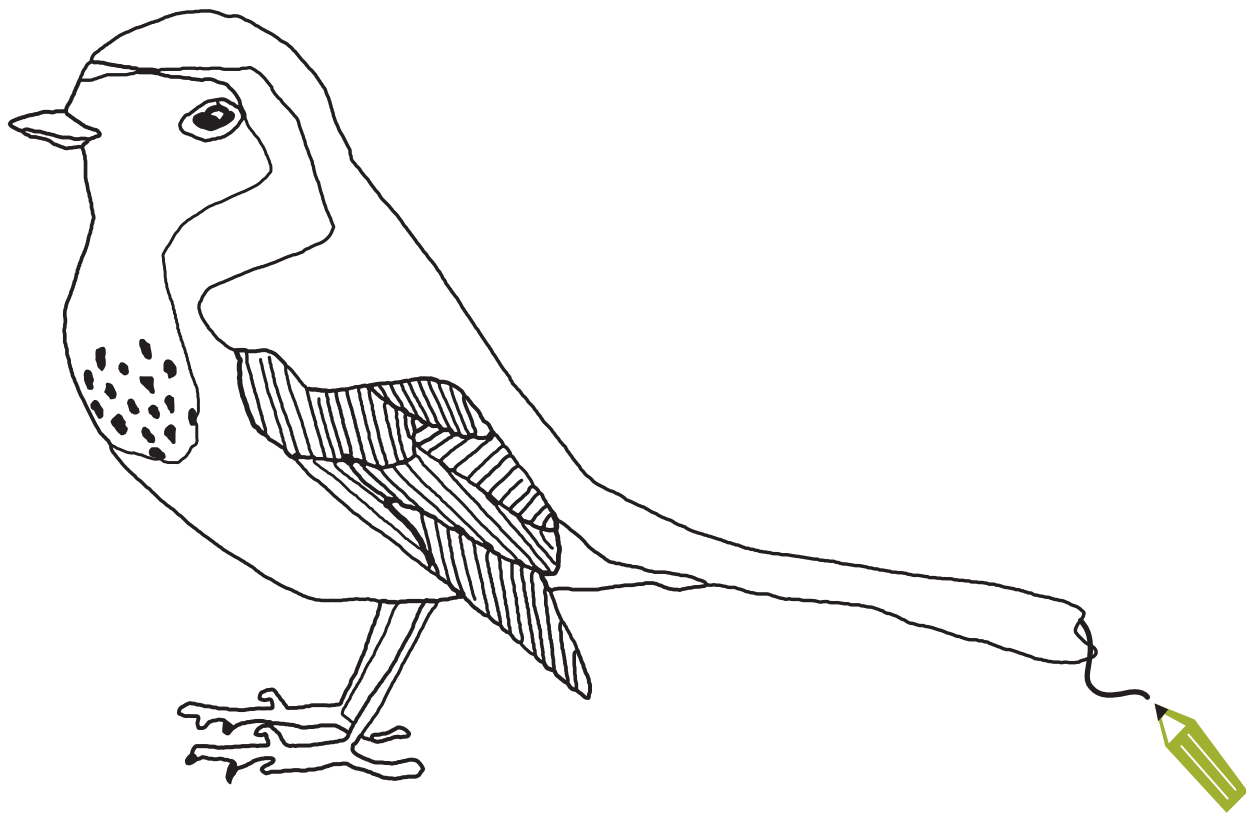
What shape will the house be?

Will it have a roof?

What else can you use to build your elf or fairy house?

Q: What falls in winter but never hits the ground?

A: The temperature



COLOUR ME
ROBIN (ERITHACUS RUBECULA)

measure a tree

Start by standing next to the tree you want to measure.

Walk in a straight line away from the tree.

Every five strides, stop, bend over and look back through your legs at the tree.

Stop when you can see the top of the tree.

Remember to keep counting your strides.

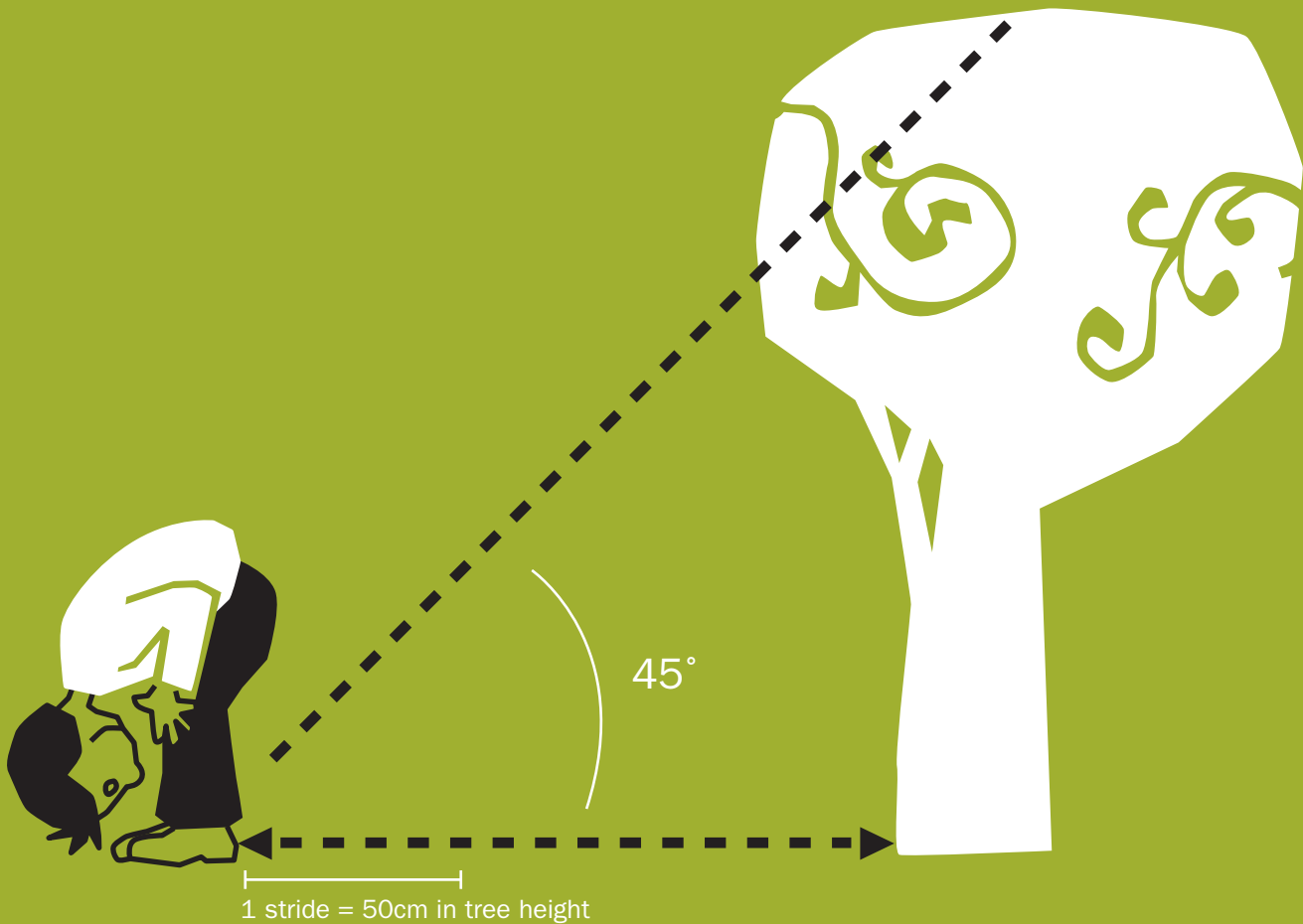
The distance you are from the tree is roughly equal to its height. Each stride is equal to 50cm.

So, if you have to walk 20 strides, how tall is the tree?

Q: What kind of tree can fit in your hand?

A: A palm tree





45°

1 stride = 50cm in tree height

new words



deciduous

Deciduous trees have leaves that fall in winter.

alga

Alga are tiny, simple plants but they do not have leaves, roots or flowers like other plants.

fungus

A fungus is neither plant nor animal. Moulds and mushrooms are types of fungus.

pollination

The process where pollen is transferred in plants and is part of reproduction. Birds, bees and insects help in this process.

mini-beast

Mini-beasts are creatures without a backbone, like spiders, snails, slugs and worms.

organic matter

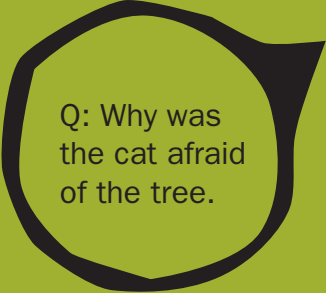
Organic matter is plant or animal material that was once living, but is now dead and rotting.

compost


Compost is a mixture of rotting organic matter that can be used to improve soil.

decompose

To rot. When an apple dies, it turns brown, soft and wrinkly, this is part of the decomposition process.



Q: Why was the cat afraid of the tree.



A: Because of its bark

new words

forage

To look for food.

canopy

Tree canopy is the upper area of the tree containing the leaves and branches.

biodiversity

Areas rich in biodiversity contain lots of different birds, insects and plants. We need biodiversity for the planet to work properly.

nectar

The sweet liquid found in flowers and plants that bees gather to make honey.

wormery

A wormery is a type of bin containing special worms that break down organic matter like waste food and help turn it into compost.

leaf litter

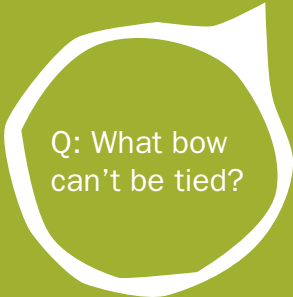
The leaves have fallen from the trees onto the ground.

native

If something is native, it means it belongs to a particular area. So, polar bears are native to the Arctic Circle, near the North Pole.

sedge

A type of plant, similar to a grass.



Q: What bow can't be tied?



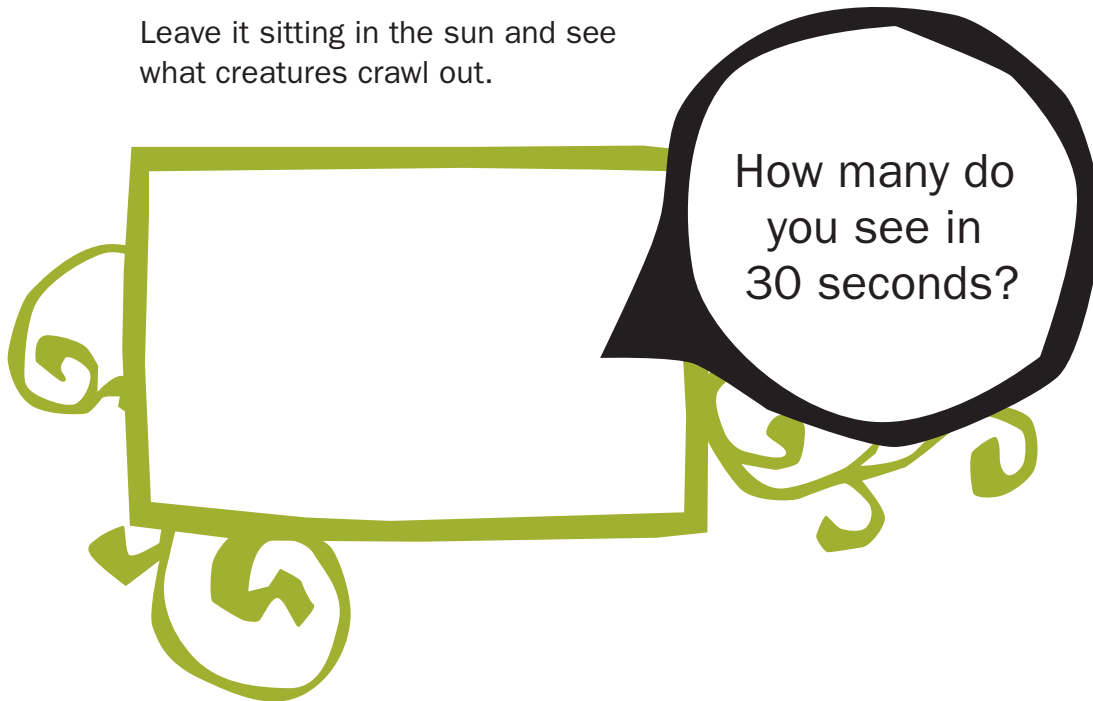
A: A rainbow

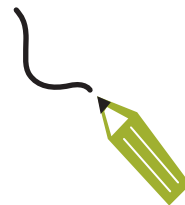
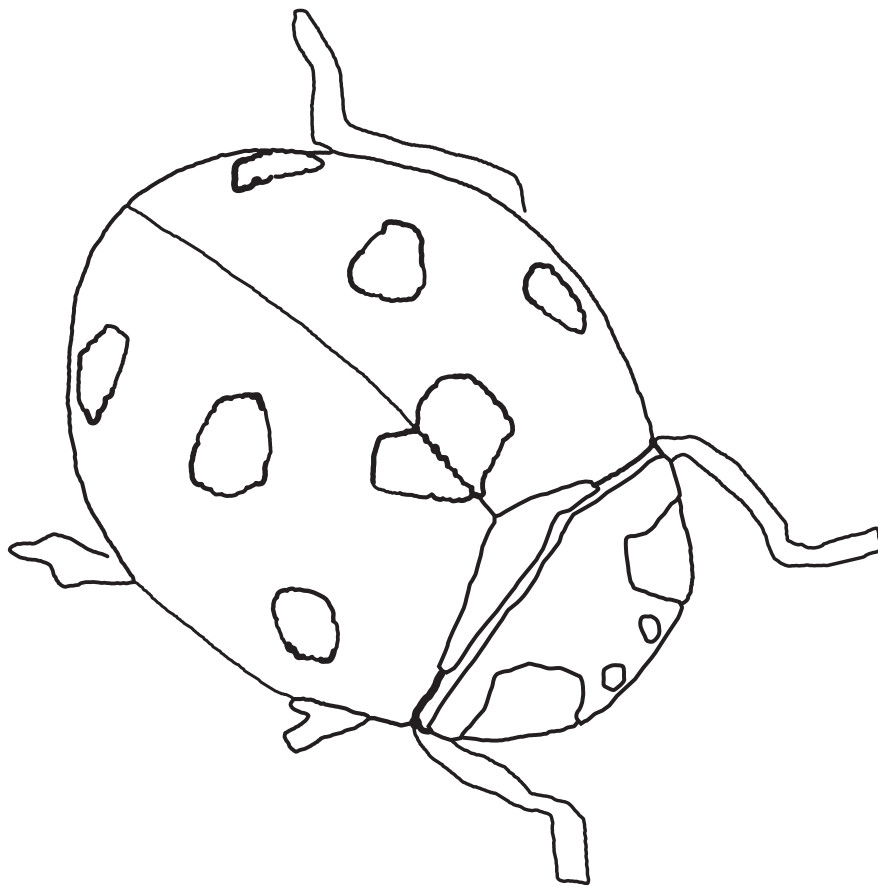


bug hunt

Take a handful of leaf litter and place it onto the back of your envelope.

Leave it sitting in the sun and see what creatures crawl out.





COLOUR ME
7-SPOTTED LADYBIRD
(COCCINELLA SEPTEMPUNCTATA)

Specimen collection

Use your envelope to collect natural specimens
as you walk around the park.



What have you found?

Why did you choose it?

Which is your favourite?

What does it make you think about Kennington Park?



specimen collection

Make up a story about what you've found.

quiz

Why will we need plants that don't need much water in future?

What was on the site of the children's playground in 1861?

What was the name of the river that ran alongside Kennington Common?

How many corks can one evergreen oak produce in its lifetime?

quiz

How much food can a tiger worm eat in a day?

Why do we need to attract birds, bees and insects into the park?

Why are plane trees important in the city?

What was the name of the last person to be hanged in Kennington Park?