



# Lambeth, SP and the LAA

## A journey, not a destination

Ann Skinner

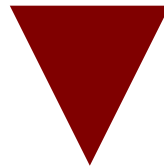
Corporate Lead, Partnership Commissioning

Lou Rossati

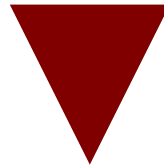
Project Manager, LAA Commissioning

- Third round LAA; currently worth £250m+
- Eleven 'stretch' targets – including KPI2 (planned move-on)
- LSP sought to embed strategic commissioning across the LAA
- Supporting People the benchmark for good commissioning
- Whole of the £21m SP budget aligned funding in the Safer & Stronger Communities block
- Commissioning project funded through Neighbourhood Renewal Fund (NRF)
- LAA enabling measure: the SP Commissioning Board was expanded to become a Cross-cutting Commissioning Board, to champion joint-commissioning and identify opportunities across the LAA

Sustainable Communities  
Strategy



Local Area Agreement



LAA Commissioning



## SUSTAINABLE COMMUNITIES STRATEGY

1 theme: **worklessness**

4 goals:

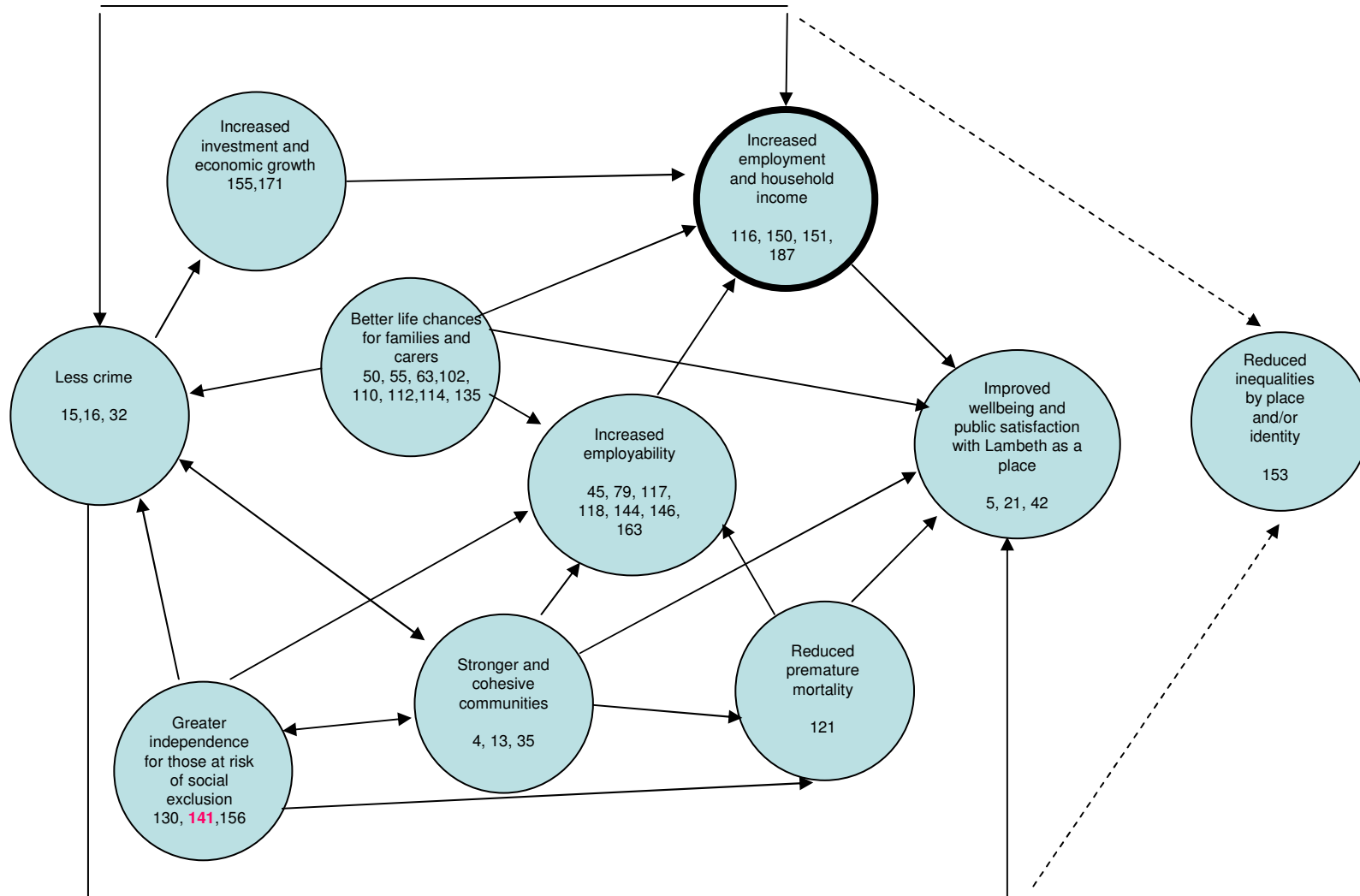
- increase employment opportunities
- extend opportunities for young people
- community safety; joint working; neighbourhood engagement
- improve most disadvantaged neighbourhoods

7 delivery pathways:

<b>Skills</b>	<b>Jobs &amp; Enterprise</b>	<b>Social inclusion</b>
<b>Built environment</b>	<b>Children, Families &amp; Parents</b>	
<b>Safe &amp; Strong communities</b>	<b>Healthy &amp; active communities</b>	

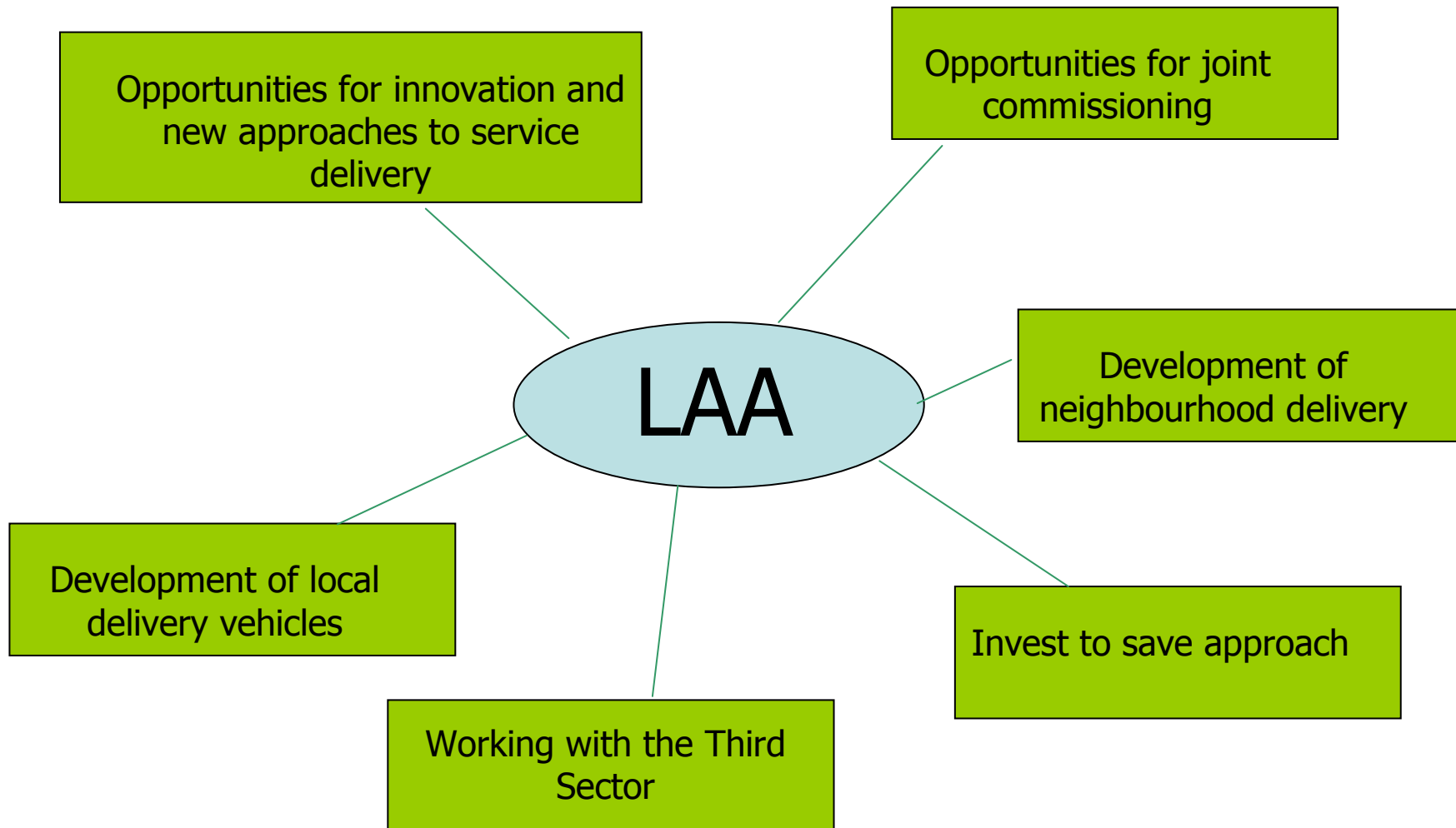


# LAA outcomes framework: the story so far...





# Commissioning as a driver for delivery





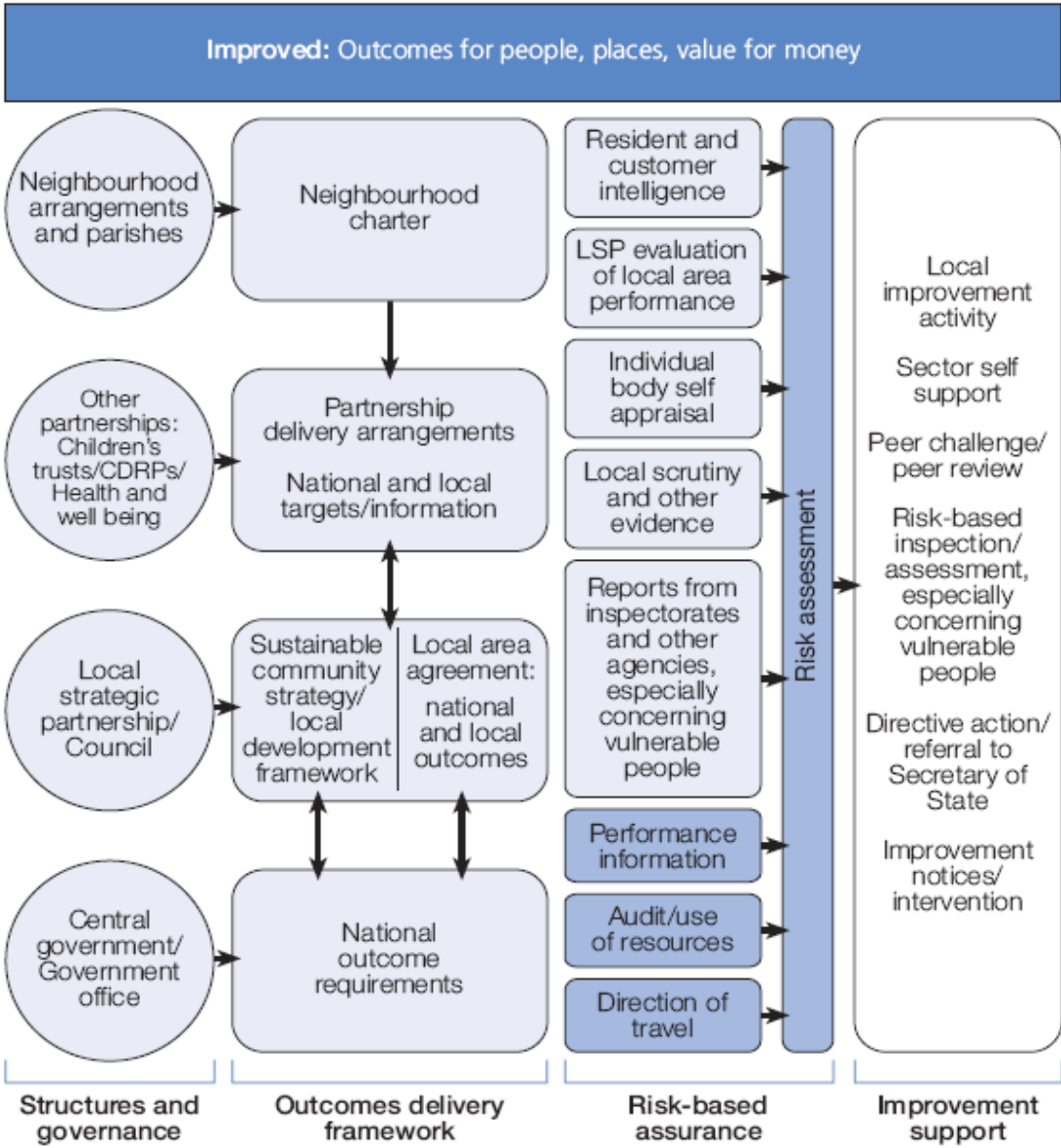
# So why is it important?

- Improving our use of resources (money, people and places) through better partnership and joint commissioning
- Holistic, evidence-based and needs-led approach to service design and delivery of service user outcomes:
  - Bringing related service providers together
  - What works/what doesn't – why doesn't it?
  - Assessing needs; having the evidence to back it up
  - Looking at gaps in services
  - Designing and re-designing services; de-commissioning poor performers or those no longer needed
- Saving money by being more efficient, using our money more effectively and having services which make long-lasting improvements
- Reducing bureaucracy by making our processes and our decision-making more streamlined
- Having the right kind of delivery organisations – including developing the local market (across all sectors - including VCS, social enterprises and small businesses)

AND...



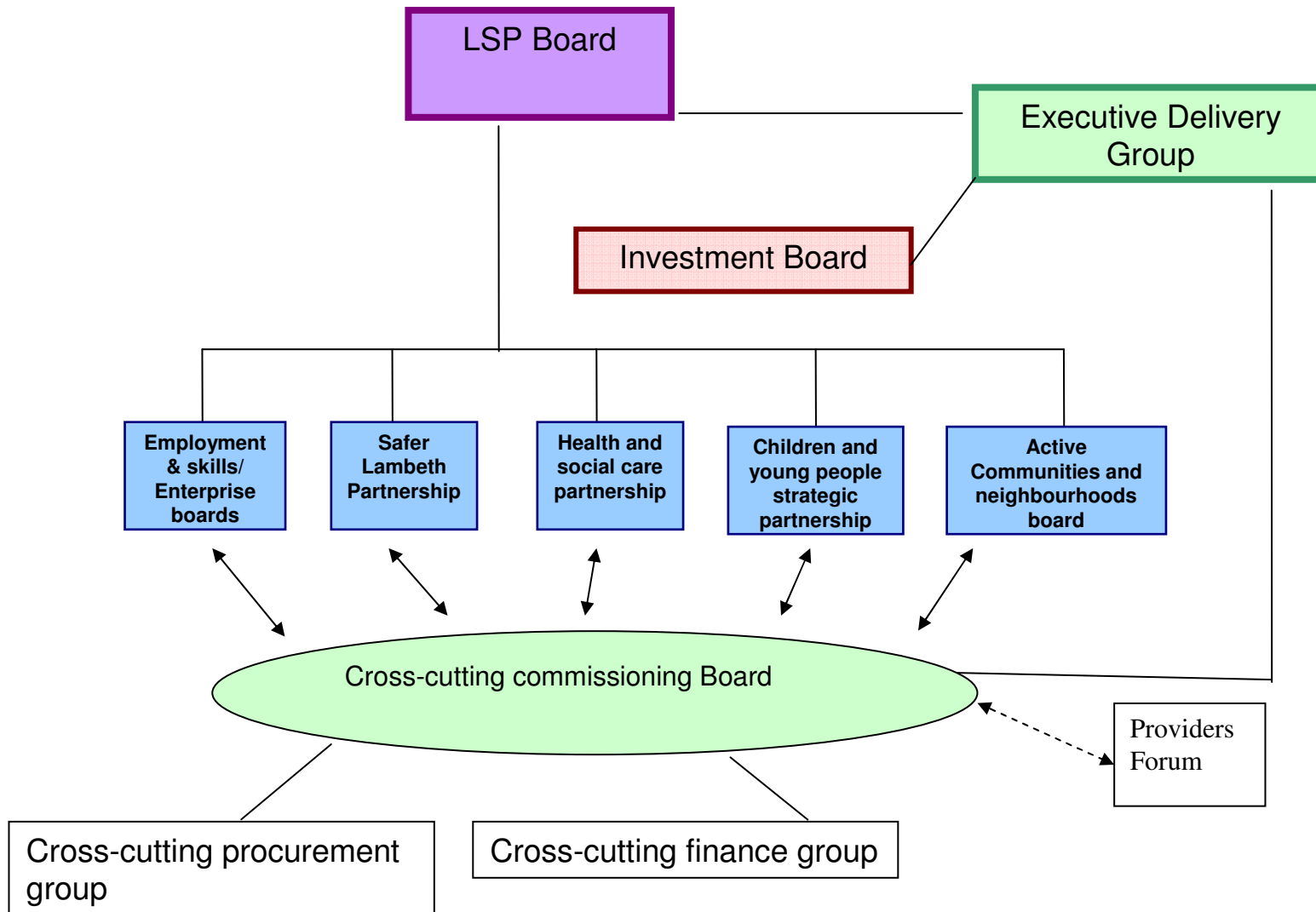
Figure 2  
The new performance framework



Source: Audit Commission



# LAA Commissioning Governance Arrangements



- Service delivery: work with multiple agencies to provide 'whole systems' funding and support
- Service re-design: involve commissioners and the communities
- Social enterprise: involve the community in delivering services
- Developing the market: provider development; involving third sector in new partnership/consortia delivery vehicles

