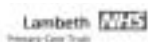




# London borough of Lambeth Community Safety Strategy 2005-8



# Acknowledgements

**The Drug and Alcohol Action Team/  
Crime and Disorder Reduction Partnership  
(DAAT/CDRP) would like to acknowledge  
the support of the following people in the  
production of this strategy:**

Rachel Heywood, Chair Brixton Area Forum (BAF)  
Ching Wah Wong, Clapham Park Project (CPP)  
Toaha Qureshi, Community Empowerment  
Network (CEN)  
Jim Toohill, Community Police Consultative Group  
Ben McKendrick, Community Police Consultative  
Group  
Cheryl Sealey, Community Police Consultative  
Group  
Helen Slinger, Government Office for London (GOL)  
Jean Carpenter, Lambeth Crime Prevention Trust  
Marianna Tortell, Lambeth Crime Prevention Trust  
Insp Sean Wilson, Lambeth Police  
Abdu Mohhidin, Lambeth Primary Care Trust  
Wendy Miller, Lambeth Primary Care Trust  
Lloyd Larose-Jones, Lambeth Probation Service  
Joanna Woodd, Lambeth Victim Support  
Paul Uncle, Lambeth Fire Service  
Ronald Holder, London Action Trust  
John Stratton, Transport for London  
Kevin Dulling, Transport for London

**Lambeth Council**

Irene Carbin-Smith, Education  
Paul Gralton, Education  
David Edwards, Environment  
Iain Boulton, Environment  
Anthony Millinship, Housing  
Maria McLaughlin, Lambeth First  
Denise Chandy, Social Services  
Keith Naish, Streetcare  
Kevin Sheedy, Youth Offending Team  
Andy Hamflett, Youth Council  
Jerry Yawe, Youth Council

**Members of the Community Safety Team**

Insp Rick Allard  
Andrew Beland  
Paul Bradley  
Dominic Busby  
Richard Cunningham  
Kieran Davies  
Christopher D'Souza  
Susan Doran  
Rachel Gailey  
Katy Gibbins  
Margaret James  
Shaila Mahomed  
Paul McCann  
Nabil Mezoughi

Kate Newham  
Deborah Oates  
Insp Peter O'Donnell, Lambeth Police  
Sgt Sandy Pepper  
Sylvia Quildan  
PC Martin Rackauskas, Lambeth Police  
Supt Andy Tarrant, Lambeth Police  
Nicole Terrieux  
CI Suzanne Wallace, Lambeth Police  
Deborah Waterman

**Drug and Alcohol Action Team**

Scott Buchanan  
Mark Edginton  
Frances Jones  
Khadir Meer  
Amy Moxham  
Ek Orogun  
Keith Stewart  
Darren Sutton  
Vince Wakfer  
Becca Walker

**Particular thanks to Lambeth CPCG, Lambeth  
First and other groups and individuals who  
contributed in developing this strategy.**

Jonathon Toy, Project Lead Officer  
Head of Community Safety

# Contents

Partnership Statement .....	2
Executive Summary and Mission Statement .....	3
Introduction .....	5
<b>Chapter 1 Prevention</b> .....	12
<b>Chapter 2 Engagement</b> .....	19
<b>Chapter 3 Reassurance</b> .....	26
<b>Chapter 4 Enforcement</b> .....	33
<b>Chapter 5 – Governance</b> .....	38
Governance Structure .....	38
Community Involvement .....	39
Key focus for Joint Action Groups.	
Drugs and Alcohol .....	42
Violent Crime .....	48
Young People .....	52
Victims and Witnesses .....	56
Priority Crime .....	60
Communication .....	64
<b>Glossary</b> .....	68

# Partnership Statement

**Lambeth has a lot to be proud of over the last three years in terms of community safety. Our levels of crime have fallen faster than any other London borough. Our levels of street crime, residential burglary and motor vehicle crime have all reduced. We have improved our treatment services so that people with needs can access appropriate services quicker. Partners from key agencies have joined us to make a real difference in key areas, in particular our Prison Service, Criminal Justice Service, Crown Prosecution Service and Fire Service.**

Most importantly of all, according to our surveys our communities tell us they feel safer and they can see that we are making a difference.

However the Drug and Alcohol Action Team/Crime and Disorder Reduction Partnership (DAAT/CDRP) believe that the journey has just begun. We want to do more to prevent crime occurring in the first place. We want to address the

challenges faced by our communities, in particular those who are affected by crime more than others. We want to provide services at a local level for people who are vulnerable, through better treatment, advice, support and information. We want our communities to contribute to what we deliver and have a clearer view of what we are doing and how they can play a part.

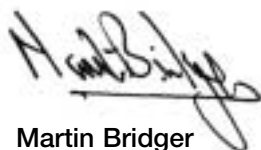
As a partnership, we want to continue with our success by further reducing crime and making Lambeth safer. We will target those people who are at the heart of crime, ensuring that our Criminal Justice System effectively delivers and establishes confidence within our community.

This three-year strategy sets out our key aims and objectives and a number of actions that we believe are essential to making Lambeth a safer place. This is not all that we intend to do, but it represents the key issues identified through our consultation and extensive Community Safety Audit carried out in 2004.

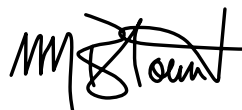
**It is our aim as partner agencies to continue to make a difference in Lambeth and we hope you will join us in helping to achieve that aim.**



**Faith Boardman**  
Chief Executive  
London borough of Lambeth



**Martin Bridger**  
Borough Commander  
Lambeth Met Police



**Martin Blount**  
Borough Commander  
Lambeth Fire Service



**Lloyd Larose-Jones**  
Assistant Chief Officer  
Lambeth Probation Service



**John Roberts**  
Metropolitan Police Authority  
Link Member



**Kevin Barton**  
Chief Executive  
Lambeth Primary Care Trust



**Cllr Peter Truesdale**  
Council Leader for the  
London borough of Lambeth



**Cllr John Whelan**  
Deputy Council Leader for the  
London borough of Lambeth

## MISSION STATEMENT

The Lambeth Drug and Alcohol Action Team/ Crime and Disorder Reduction Partnership (DAAT/CDRP) will improve the quality of life and opportunity for people who live, work in and visit our borough. We will achieve this by reducing crime and the fear of crime and promoting safer, healthy and positive lifestyles, with a focus on addressing problematic drug and alcohol use. Working with our communities, service providers, businesses and the voluntary sector we aim to offer professional and accessible services that provide support and treatment to those who are affected by drug and alcohol misuse or crime, particularly those communities who maybe disproportionately affected because of their race, age, gender, sexual orientation, disability or religion.

**The Lambeth DAAT/CDRP was established following the Crime and Disorder Act 1998 to develop and implement a strategy for reducing crime and disorder in the borough. This document is the third strategy to be implemented in Lambeth and is aimed at continuing to make the borough a safer place for those who live, work in and visit our borough by building on the achievements we have obtained over the last three years.**

Key findings from the Community Safety Audit 2004 show that:

- Despite consistent and considerable falls in crime levels, the community still feel unsafe
- Violent crime is the key concern in terms of crime levels and fear of crime
- More investment is required to address the causes of crime
- There needs to be greater and more focused youth provision, delivered by young people and with the involvement of positive role models
- There needs to be a greater investment in community-based reassurance programmes
- Transport and transport hubs remain a focal point of concern
- There needs to be a greater investment in victims and witnesses programmes
- There continues to be challenges in relation to the way that agencies collect, retain and manage data.

## What do we want to achieve over the next three years?

The aim of the Lambeth Community Safety Strategy 2005-8 builds on the achievements of the last three years and is:

### To continue making Lambeth a safer place for those who live, work in and visit our borough.

Having reviewed the findings of the audit there are clearly a number of key objectives that the Lambeth DAAT/CDRP wishes to concentrate on. These are:

#### Prevention

Addressing the causes of crime

#### Engagement

It's our borough

#### Reassurance

Feeling safer

#### Enforcement

Taking action

There are six central themes that are at the heart of these objectives. These are:

- **Drugs and Alcohol**
- **Violent Crime**
- **Young People**
- **Victims and Witnesses**
- **Priority Crime** – including robbery, burglary, motor vehicle crime, anti social behaviour/ enviro-crime, kerb-crawling, prostitution, illegal drug dealing
- **Communication** – Telling people what we are doing, what we have achieved and how they can get involved.

Delivery of our objectives across the six themes will be co-ordinated and monitored by **Joint Action Groups** (JAGs). Each JAG will oversee the delivery of agreed annual action plans.

The **Executive Board** will performance manage delivery of the action plans. Emphasis will be placed on solving blockages to delivery, which JAGs have identified, and ensuring work across the partnership is integrated and cohesive.

The **Partnership Board** will be accountable for delivery of the strategy and will champion the work of the JAGs.

**The Crime and Disorder Act 1998 requires each local authority to publish a strategy every three years on how key partners and agencies within the Lambeth Drug and Alcohol Action Team/Crime and Disorder Reduction Partnership (DAAT/CDRP) such as, the Police, Fire Service, Lambeth Primary Care Trust, Probation, the Prison Service and Lambeth Council intend to tackle crime, improve community safety and reduce the fear of crime.**

As crime and feeling safe are the priorities for our community, this strategy takes into account the concerns that people who live, work in and visit our borough have expressed as part of our consultation process for the *Lambeth Community Safety Audit 2004*<sup>1</sup>. The strategy is a document for our community and partners, outlining:

- What we have achieved in the last three years
- What we intend to do over the next three years
- How we will deliver the strategy
- Who needs to be involved
- How we will link with other strategies in the borough and the region.

This strategy is a document that sets out our broad agenda. To underpin this, we will also produce

annual action plans, setting out in more detail the steps required to achieve the objectives and targets of the strategy. Most importantly, we want this document to be a strategy that enables delivery and ensures that our partner agencies and our community see how they can play a key part in improving safety in our borough.

### **The positive aspects of Lambeth**

The London borough of Lambeth is set in the heart of the capital city, with its northern boundary stretching along the south bank and its southern borders adjoining five other outer London boroughs. Lambeth boasts some of London's most prominent landmarks and attractions, such as:

- The London Eye
- The Imax Cinema
- The Royal Festival Hall
- The Saatchi Gallery
- The Brixton Academy
- The Oval Cricket Ground
- Clapham Common
- Lambeth Palace
- Brockwell Park Lido
- Electric Avenue
- Brixton Market
- Waterloo International Station.

Lambeth is also London's most densely populated London borough, with 266,169<sup>2</sup> residents. As one of the prime locations of the settlement for the Caribbean community in the early 1950s, Lambeth is proud of its black cultural history. We now boast a rich cultural community where over 157 languages are spoken.

### **Challenges in Lambeth**

If we are to make a long-term sustained improvement in community safety and reduce the fear of crime, there is a need to address some of the challenges that we face and which impact on our borough.

The borough has some of England's most deprived areas, higher than average rates of unemployment, poor quality public sector housing, lower than average life expectancy, high health support needs and has the country's highest teenage pregnancy rates.

In terms of deprivation levels for crime and disorder, 47% of the borough of Lambeth is included within the top 10% of the most deprived areas in England. Crime deprivation is made up of the following offence types: burglary, theft, criminal damage and violence.

<sup>1</sup> The full audit can be found on the Lambeth website – [www.lambeth.gov.uk](http://www.lambeth.gov.uk) or a copy can be obtained from the Community Safety Team, on 020 7926 2733 or email [cedcommsafety@lambeth.gov.uk](mailto:cedcommsafety@lambeth.gov.uk).

<sup>2</sup> Census 2001, Office of National Statistics

### What have we achieved in the last three years?

The Community Safety Audit 2004 highlights in detail Lambeth's successes in reducing crime and disorder over the last three years and identifies the emerging priorities. The audit gives us a clear picture on crime in the borough.

Figures in the audit are supplied by:

- Metropolitan Police Service
- British Transport Police
- Criminal Justice Intervention Programme
- National Drug Treatment Monitoring System (NDTMS)

It also includes qualitative data from the consultation of Lambeth's community through questionnaires, focus groups and face-to-face interviews.

There have been a lot of successes across Lambeth, thanks to the efforts of a whole range of agencies, groups and individuals. **Total notifiable offences (TNOs) fell by 12.5% between 2001-2 and 2003-4. This is the highest reduction of any inner London borough.** Below are the top ten successes since 2001-2:

1. In 2003-4 Lambeth was ranked 8th highest in crime per 1,000 population compared to 3rd in 2001-2. This means that there is less crime in Lambeth now compared to two years ago.
2. The cost of crime reduced by £110m in the three years of 2001-2 to 2003-4.
3. Residential burglary fell by 17% in 2003-4 compared to 2002-3.
4. Commercial robbery fell by 32% in 2003-4 compared to 2002-3.
5. Personal robbery offences reduced by 49% in 2003-4 compared to 2001-2.
6. Motor vehicle crime decreased by 18% in 2003-4 compared to 2002-3.
7. There has been a 54% decrease in the number of abandoned vehicles in 2003-4 compared to 2002-3.
8. 83% of those residents who participated in our face-to-face interviews said they felt as safe or safer than they did 12 months ago.
9. In 2003-4, 1363 people accessed structured treatment in Lambeth (a 12% increase on 2002-3).
10. Over the course of 2003-4 average waiting times for structured treatments decreased from 26 days to six days for in-patient detoxification services and from 63 days to six days for residential rehabilitation services.

### Key messages from the audit

Lambeth is proving its ability to tackle crime and is an example of how communities and agencies can work together to improve community safety.

The successes of the last three years have given Lambeth the opportunity to look at the issues which cause crime. It was clear from the audit that this is where we need to concentrate our energies.

The key messages from the audit were that we needed to:

- Focus on violent crime including domestic violence (DV)
- Address the issues relating to guns and weapons
- Consider drug and alcohol related issues including enforcement and treatment
- Do more to support those people who are witnesses and victims of crime
- Develop safe and confidential ways of reporting crime and support for victims of crime, especially for individuals/groups who previously would not report crimes committed against them
- Improve the safety around and on public transport

- Invest more in a visible presence on our streets
- Promote community safety successes and challenge some of the negative perceptions that people have of Lambeth
- Find ways that encourage people, communities, businesses and organisations to take responsibility for maintaining and improving the areas that they live and work in
- Improve the education, employment and housing choices and opportunities for our communities, especially our young community, vulnerable residents and those people who are more affected by crime than others, either as suspects, victims or witnesses
- Identify positive role models who can actively promote community safety.

The audit has given us a clear indication that Lambeth has come a long way in tackling crime. The findings from the audit make it clear that tackling the causes of crime, supporting our communities and improving our communication all need to be at the heart of our next three-year strategy.

### What do we want to achieve over the next three years?

Our four objectives, **Prevention**, **Engagement**, **Reassurance** and **Enforcement** build on our last strategy broadening the emphasis into the preventative and reassurance areas of community safety. The importance of the six central themes runs throughout the strategy. These are highlighted in each of the four objective chapters.

The following table highlights the main targets for the four objectives as set at national levels, and our local sub-targets for the six themes:

## OBJECTIVES

## Themes

## Main target for the four objectives

## PREVENTION

## Addressing the causes of crime

**PSA<sup>3</sup> 4:** Reduce the harm caused by illegal drugs (as measured by the Drug Harm Index encompassing measures of the availability of Class A drugs and drug-related crime) including substantially increasing the number of drug misusing offenders entering treatment through the Criminal Justice System.

## ENGAGEMENT

## It's our borough

**PSA 6:** Increase voluntary and community engagement, especially amongst those who are at risk of exclusion.

## REASSURANCE

## Feeling safer

**PSA 2:** Reassure the public reducing the fear of crime and anti social behaviour and build confidence in the Criminal Justice System without compromising fairness.

## ENFORCEMENT

## Taking action

**PSA 1:** Reduce crime by 20% and further in high crime areas by 2007-8 compared to 2003-4 (for more details see target table on page 36).

**PSA 3:** Improve the delivery of justice by increasing the number of crimes for which an offender is brought to justice to 1.25 million by 2007-8. Target contributing to the Criminal Justice System PSA.

## Local sub-targets

## Drugs and Alcohol – Treatment

**Increase** by 10% year on year the number of people accessing drug treatment services in Lambeth. Baseline 2003-4 (1363).

**To continue** to commission, monitor and performance manage drugs and alcohol treatment services at current levels.

**To identify** gaps in service provision.

**5% reduction** each year in incidents of domestic fires associated with alcohol abuse compared to 2004-5.

**Meet** all of the NTA waiting time targets for all areas for drug treatment services.

**The proportion of** crack houses in Lambeth successfully closed within six months of the first police raid as a percentage of all crack houses raided by Lambeth police at least once.

**Reduce** by 3% (in line with PSA 1 local GBH<sup>4</sup>/ABH<sup>5</sup> target) the levels of alcohol-related violent admissions at A&E. Baseline to be established through research with Kings A&E.

<sup>3</sup> Public Service Agreement    <sup>4</sup> Grievous Bodily Harm    <sup>5</sup> Aggravated Bodily Harm

## OBJECTIVES

## Themes

## Drugs and Alcohol – Enforcement

## PREVENTION

## Addressing the causes of crime

**Maintain** the level of removal of sex and drug paraphernalia each year until 2008 compared to the baseline 2003-4 (274kgs).

## ENGAGEMENT

## It's our borough

**To develop** a partnership group to support and enforce licensees in line with the implementation of the Licensing Act 2003.

## REASSURANCE

## Feeling safer

**Reduce** the rates of re-offending as a result of co-ordinated treatment.

## ENFORCEMENT

## Taking action

**Increase** by 10% the number of detections for the supply or possession with intent to supply Class A drugs when comparing 2005-6 to 2004-5.

## Violent Crime

**To establish** a gang intervention programme in Lambeth in 2005-6.

**Increase** the number of third party reporting sites for domestic violence and hate crime to 60 by March 2008 and the number of reports received by 10% each year from April 2005.

**Increase** the reporting of violent crime by 15% against the baseline in the audit.

**Reduce** the number of recorded murders, ABH and GBH offences in the borough. (See PSA 1, pg36)

**Reduce** gun enabled crime by 5% year on year compared to 2003-4.

**16%** increase in offenders brought to justice for gun enabled crime by 2007-8 compared to 2004-5.

**Reduce** the number of alcohol-related violent incidents (targets to be established).

## OBJECTIVES

## Themes

## Young People

## PREVENTION

## Addressing the causes of crime

**Reduce** the number of first time entrants to the Youth Justice System by 5% by March 2008.

**Ensure** at least 90% of young offenders are in full-time education, training or employment by March 2008.

**Increase** the use of restorative processes in work with young victims.

## ENGAGEMENT

## It's our borough

**Set up** and fund five youth forums by March 2006.

**All secondary schools** to be operating as extended schools by September 2006.

**Three schools** to be operating as fully serviced schools by March 2007.

## REASSURANCE

## Feeling safer

**The Local Education Authority** (LEA) in the 2nd quartile of London LEA's.

**100%** of permanently excluded pupils provided with alternative tuition of 20 hours or more per week each year.

## ENFORCEMENT

## Taking action

**Reduce** the re-offending rates by 15% (5% year on year) for specific population of young people by 2007-8 compared to 2003-4.

## Victims and Witnesses

**Increase** the number of Acceptable Behaviour Agreements by 15% compared to 2003-4.

**90%** of Acceptable Behaviour Agreements to be maintained.

**Reduce** by 5% each year the number of people sleeping rough on a single night within the area of the authority.

**5%** reduction in the average number of families, which include dependant children or a pregnant woman, placed in temporary accommodation under the homelessness legislation compared with the average from the previous year.

**Increase** the borough-wide visible uniformed presence by March 2007.

**Establish** a young people's victim service by March 2007.

**Establish** a victims and witnesses advocacy service in the five joint service centres (as these are rolled out).

**15.8%** (MPS target) increase in offences brought to justice in 05/06 (baseline for Lambeth to be established).

## OBJECTIVES

## Themes

## Priority Crime

## PREVENTION

## Addressing the causes of crime

**Deliver** domestic violence training to a minimum of 500 professional officers from key partner agencies to improve the early identification of domestic abuse by March 2008.

**Increase** the sanctioned detection rate of all hate-related crime including BME, LGBT and religious crime to 24% by March 2008.

## ENGAGEMENT

## It's our borough

**Ensure** community groups are aware of improvements, and facilitate and support their involvement in community safety issues.

## REASSURANCE

## Feeling safer

**95%** of all fly-posting/offensive graffiti to be removed within 24 hours of reporting.

**Investigate and remove** all reported abandoned vehicles within 24 hours and investigate and take action against all reported untaxed vehicles within 72 hours.

## ENFORCEMENT

## Taking action

**Minimum 5%** reduction in TNOs in each ward by March 2008 compared to 2003-4.

**Reduce** the high crime wards to the Lambeth average of 2003-4 by March 2008.

**80%** of all labelled vehicles crushed within ten days of issue of CLE26<sup>6</sup> notices each year.

**90%** or more noise nuisance abatement notices to be complied with.

**Persistent and Prolific Offender** target – 75 individuals to be targeted in the Catch and Brought To Justice element each year. 45 to be actively case managed.

## Communication

**Provide** a minimum of 200 drug and alcohol awareness training sessions to non substance misuse providers and community representatives.

**100%** of publicity and information with regards to services and initiatives are available in appropriate languages and formats from October 2005 (resource permitting).

**Increase** the percentage of people who feel safe when outside in their home area during the day to 95% (baseline from audit is 93%) by March 2008.

**Increase** the percentage of people who feel safe when outside after dark to 56% (baseline from audit is 46%) by March 2008.

**Achieve** a 17% sanctioned detection rate of all TNOs in Lambeth each year of the three-year strategy.

<sup>6</sup> Abandoned Vehicle notification sent to the DVLA

# Chapter 1 Prevention

## NATIONAL TARGET

**PSA 4: Reduce the harm caused by illegal drugs (as measured by the Drug Harm Index encompassing measures of the availability of Class A drugs and drug-related crime) including substantially increasing the number of drug misusing offenders entering treatment through the Criminal Justice System.**

## Preventing crime

If we are to continue reducing crime, we have to focus on preventing the occurrence of crime. The Drug and Alcohol Action Team/Crime and Disorder Reduction Partnership (DAAT/CDRP) consider that this is the biggest challenge that we face and one that everyone who lives, works in and visits our borough can contribute to.

Our Crime and Disorder Audit 2004 highlighted six key areas that cause crime. Each one of these is significant either through its impact on an area or in setting trends that allow criminality to flourish.

This chapter looks at the key areas from the point of view of how the community safety agenda can positively contribute and benefit from focusing on prevention and as a result reduce crime and the fear of crime in our borough.

It is essential that the Community Safety Strategy is not seen in isolation from other key strategies for the borough. Lambeth's Community Strategy sets out a longer-term vision for addressing deprivation, the image of the borough and improving choice and opportunity. The council's Children and Young People's Strategy will give a more detailed focus on a long-term vision for improving children's services. Lambeth's Housing and Homelessness Strategies look at housing provision in the borough over the next three years.

## Deprivation

### What do we mean by deprivation?

The Index of Multiple Deprivation for 2004 is made up of seven different categories: Income deprivation, Employment deprivation, Health deprivation and disability, Education, skills and training deprivation, Barriers to Housing and Services, Living environment deprivation and Crime. The level of deprivation for an area is measured on the number of types of deprivation that are experienced by the individuals living in that area.

It is important to point out that communities who live in deprived areas are not all causing crime. Our audit research does indicate that high levels of crime are recorded in areas where our housing is poor, educational attainment is below average, young people do not have access to employment opportunities and families and individuals suffer from poor health. It is the combination of these effects that can result in social exclusion and a lack of self-esteem and self worth, which may set some people on a road to criminality.

## What did the audit tell us?

### Deprivation:

- 47% of the borough of Lambeth is included within the top 10% of the most deprived areas in England in relation to the Crime and Disorder rank.
- Out of the Crime and Disorder rank by Super Output Areas (SOA)<sup>7</sup> compared to the rest of England, 50 of Lambeth's 177 SOAs are within the top 5% most deprived in England.
- Coldharbour ward contains the two most deprived SOAs in Lambeth. These two SOAs are in the top 5% of the most deprived areas in England.
- 108 of the 177 SOAs in Lambeth are in the top 25% most deprived in England.

### Young People:

- Lambeth is a young borough in terms of population as 45% of residents are aged between 20-39.
- 20% of 16-18 year olds are not in education, employment or training.
- In 2003, 41.7% of pupils obtained 5+ GCSEs at A-C grades, compared to the national average of 52.9%.

- Approximately 25% of Lambeth's residents suffer from poor numeracy and literacy. Although this is the national average, Lambeth sits higher than average in the categories of 'Lower' or 'Very Low level' of numeracy and literacy compared to the national average.
- Teenage conception rates are the highest in England.
- Infant mortality rates for Lambeth are 7.5 per 1000, compared to the national average of 6 per 1000.

### Employment:

- 20% of households have a gross income of less than £10,000 per annum. However 20% have a gross income of over £50,000 per annum.
- 4,500 people are registered as long-term unemployed.
- In the age range of 16-24 years, 22.7% of Black Caribbean people, 12.7% of Black African and 7.3% of White British are unemployed.
- In the age range of 25-74 years, 14.5% of Black Caribbean people, 14.4% of Black African and 5.2% of White British are unemployed.

Our Lambeth Community Safety Strategy 2005-8 will also look at the impact of:

- Those people, often with high needs of support due to their lifestyles, who pass through our borough and their impact on crime and community safety.
- How our borough will change over the next three to five years through housing requirements and regeneration.

<sup>7</sup> Area smaller than a ward, that contains 1500 residents.

## Lack of choice and opportunities

### What do we mean by lack of choice and opportunity?

National and local research and our audit and consultation clearly demonstrated that where communities had limited access to good housing and health care combined with poor environments, their aspirations, choices and future opportunities were far more likely to be limited. Further, their chances of being at risk or involved in crime were far higher, as were the chances of being a victim of crime.

### What did the audit tell us?

Our audit identified a number of key issues, which we need to address if we are to improve safety and feelings of being safe within our borough. These are:

- Limited or poor access to services.
- Poor environment / health / housing (refer to Deprivation section p12).
- Deprivation / unemployment / low wages (refer to Deprivation section p12).

- Poor educational attainment / exclusion from school / limited training opportunities.
- Lack of positive role models (media, peers, local community, family) / poor self-esteem.
- Negative peer pressure and influences increasing the chances of getting involved in anti social and criminal behaviour.
- Attractiveness of crime to earn money and respect.
- Lack of appropriate facilities and activities for young people.
- Fear of crime / vulnerability.
- Victims and witnesses of crime (felt much more vulnerable particularly if they have been a repeat victim of crime).
- Rehabilitation / support to 'break the cycle' of offending.

## Image and reputation

### What do we mean by image and reputation?

The image and reputation of Lambeth is a key crime generator for the borough. Whilst image might seem a less important priority than other factors like deprivation, the drugs market or violent crime, its significance is supported by the audit's findings, not only in terms of crime data but also from our extensive consultation. This has a huge impact upon the quality of life for those who live and work here and leads to major concerns about crime for local people.

There is no doubt that the last three years have seen real, positive progress on changing the face of Lambeth. This is supported by the fact that 83% of respondents from our face-to-face questionnaire felt safer or as safe as they did 12 months ago. Lambeth has one of the most vibrant communities who, in the majority, want to contribute to improving the quality of life in the borough.

As a community who live and work in our borough we need to promote the positives, challenge those who continue to portray a historically negative image and be proud of our culture, history and achievements.

The DAAT/CDRP recognises the importance of communications in delivering the priorities identified in the audit. Below is a broad overview of what we can do to actively promote the borough and also how we will encourage community involvement and participation in making Lambeth a safer place.

'Image and reputation' also refers to people as well as our borough. Our consultation highlighted just how much the media, television, music industry and indeed, some criminal elements, encourage criminality and often intimidate people into, or to stay in, a life of crime. We have a real opportunity to use positive role models both at a local level and those on a national and international stage to promote positive images for our community and, in particular, our young community.

### **What did the audit tell us?**

- We are not doing enough to publicise and celebrate our successes in tackling crime.
- People and particular groups are disproportionately frightened of crime in Lambeth. Challenging and changing the existing image of the borough is central to altering their perceptions.
- It is not only the image of the borough that impacts on crime. Certain groups, especially young people, felt that their personal image and surrounding street culture contributed directly to how safe they feel and how likely they were to be a victim of crime. About one in four young people carries a weapon, and this is often more to do with image than the intention to commit a crime. Positive role models for young people would have a direct and beneficial effect upon their behaviour and vulnerability. Young people also need to be helped to make better life choices, and their opportunities need to be improved.
- Lambeth suffers because of its profile in regional, national and international media and is a centre for drug and crime tourism as a result.
- Campaigns are needed to reach much further than the borough boundaries to combat this.
- We need to promote and raise the profile of the DAAT/CDRP to the public, to continue to build better relationships within the partnership, and to get new partners on board, especially from the community and voluntary sectors.
- We need to improve our communications and information systems both ways so that people know what is happening and agencies know what people want.
- Certain types of priority crime, for instance motor vehicle crime and residential burglary would be radically improved if information and education were better circulated and more accessible, e.g. in poster campaigns carrying simple messages.
- 50% of those arrested and tested for drugs under the Arrest Referral Scheme in Lambeth have travelled from outside the borough to commit crime.

## Taking responsibility

### What do we mean by taking responsibility?

There was a common thread that emerged to the Community Safety Audit Team as the evidence was reviewed. This centred on 'responsibility and ownership'.

### What did the audit tell us?

Our analysis broke this down into three headings:

#### 1. Commercial responsibility

Whether we looked at drugs, alcohol, environment, young people, property crime, motor vehicle crime or anti social activities. We saw evidence that where businesses that operate within the borough failed to recognise the impact that they had on the environment and the community, crime and associated criminal behaviour flourished. There is a clear need for businesses to take a lead role in managing the town centre environments and playing a more active role in taking a stand to reduce crime and the fear of crime. There is a similar need for local business forums that allow smaller businesses to come together to find new ways to support each other to address crime.

#### 2. Personal and community responsibility

A lot of evidence from the surveys and focus groups, indicated that individuals felt their environment had a substantial impact on how unsafe they felt, whether at home, in their home area, in town centres or on public transport.

When asked what could be done to make them feel safer there was an overwhelming emphasis amongst respondents on external and in some cases statutorily provided, services such as more police, CCTV and visible presence, rather than taking personal ownership.

This is borne out by our crime statistics where volume crimes such as:

- Other theft
- Theft from a motor vehicle
- Residential burglary (which increases in the summer months through increased access, e.g. windows being left open)
- Mobile phone theft
- Property theft outside tube and bus stations,

have demonstrated that individual behaviour, personal responsibility and community ownership can have a significant impact on reducing crime levels and the fear of crime in the borough.

Equally, anti social behaviour was seen as a serious issue for our community. Our face-to-face survey revealed that more people have been victims of anti social behaviour than any other crime (17%). This is also the same over the last 12 months at 11.8%. And yet a lot of the elements of anti social behaviour that were raised are things that we can all take responsibility to prevent, such as:

- Keeping the environment cleaner and tidier including tackling fly-tipping and graffiti
- Maintaining shrubs, trees and bushes
- Reporting faulty street lights
- Not to cycle on the pavement.

There are a number of excellent examples in our borough where communities have taken a stand. The role of partner agencies is to support them and to encourage others, giving them the tools and knowledge to make a difference in their area.

### 3. Responsibility of public bodies

The public authority, whether it is the Police, the council or health provider has a responsibility to set standards with regards to what they do, when and how they provide their services to ensure this leads to an environment in which people feel safe.

There was strong evidence from the surveys and focus groups that indicated that the communities confidence in the public authorities' ability to tackle crime was low. Despite the significant crime reductions in the borough over the last three years.

Our young people felt that the public authorities should have a greater responsibility to ensure that they had the opportunity to influence and participate in delivering services for young people.

There was a clear indication from our audit that our communities at all levels, ages, gender and ability want to play a part in improving the borough. They need the support and structure from public bodies which enables their participation.

A simple process that helps people know how they can get involved, would go a long way to more active participation in community safety programmes.

## Transport

### What do we mean by safer transport?

The DAAT/CDRP has a clear vision on improving safety on our public transport and throughout our journeys.

It was clear from the replies to our consultation that all of our communities, including council officers, young or older people, disabled people or those from our LGBT or BME communities, felt that safety around our public transport hubs was as much of an issue as safety whilst travelling on public transport.

Regarding getting safely to and from your destination, whether it is by train, London Underground, bus, car, bicycle or as a pedestrian, the DAAT/CDRP want to address:

- Journey planning / understanding your route and the area in which you live
- Awareness (e.g. signage)
- Environment (e.g. safe routes and lighting)
- Co-ordination between all agencies to make the whole journey safer.

### What did the audit tell us?

- There are nine tube stations in the borough, all of which are hotspots for crime.
- We have 13 overground stations, a number of which featured as crime hotspots particularly in Streatham and Norwood.
- The majority of hotspots in the borough were situated around the transport hubs and major arterial routes such as the A23 (South Circular).
- Focus groups constantly referred to fear of crime and personal safety on buses, trains and tubes. The Pensioners' Forum highlighted safety on transport and mobility as key issues for their members.
- Young people felt unsafe on buses and in tube stations.
- 53% of the female face-to-face interviewees felt unsafe using buses after dark.
- Council employees felt fairly safe whilst travelling unless it was after dark.

## Drugs and Alcohol

### What do we mean by reducing the harm caused by drugs and alcohol?

Drugs and alcohol and their relationship with crime, have had high-profile attention in recent years. The government, both national and local, and the media have focused a lot of attention on the level of drug dealing and use and how it impacts on crime. Furthermore, Lambeth is an area with particularly significant drug issues, which are given a disproportionate amount of media coverage. Alcohol has also recently been the subject of much debate. The DAAT/CDRP welcomes the raised profile of alcohol-related community safety issues.

### What did the audit tell us?

- Residents rated the issue of drugs as the biggest problem in Lambeth – 60% claimed that drug dealing or drug use were fairly or very serious problems in their area.
- In 2003-4, there were 5,653 drug related incidents, compared to 5,472 in 2002-3 (an increase of 3.3%, Count = 181).
- There was a 5.3% increase in the number of crack (excluding cocaine) related offences, from 227 offences in 2002-3 to 239 offences in 2003-4.
- There was a 39.8% decrease in the number of heroin (excluding other opiates) related offences, from 133 offences in 2002-3 to 80 offences in 2003-4.
- Drug misuse-related hospital admissions increased from 264 to 382.
- In total, there were 79 council properties closed as a result of identified drug activity.

There are two areas of the preventative agenda for addressing drugs and alcohol,

#### 1. Preventing people becoming involved in drugs and alcohol misuse:

- Better awareness of the impact of drugs and alcohol on our health, employment, families and our communities.
- Breaking the cycle between those who control the drugs market and those who are its customers and couriers.
- Fast and effective enforcement of those who commit drug-related crime.
- Better management of those areas and premises in areas of our night-time economy by promoting responsibility amongst businesses and individuals.
- Tackling the binge drinking culture.

#### 2. Supporting people who have problematic drug or alcohol dependencies in addressing their dependencies by providing appropriate interventions

- Continue to provide and improve services through better support and outreach for people who are drug and/or alcohol dependant.
- More co-ordinated services in HMP Brixton and better post-prison discharge into community support and integration programmes, particularly for Lambeth residents.

# Chapter 2 Engagement

## NATIONAL TARGET

**PSA 6: Increase voluntary and community engagement, especially amongst those who are at risk of exclusion.**

This chapter is about us, the community of Lambeth. It not only includes those that live and work in our borough, but also those that travel through or visit it.

If we want to work with and effectively engage with our communities we have to understand:

- What makes a community
- How we can make our communities effective
- How we can support our communities to find solutions.

Lambeth has rich and vibrant communities, often intermingled and interchangeable. A person might be described as part of a community according to where they live or work, their religion or culture, whom they socialise with, their age, sexual orientation or family. Identity and belonging make a community and it is clear from our Crime and Disorder Audit and from the work we have done on the Community Strategy that the best way of making our communities effective is to give them, us, the ability to make a difference.

The DAAT/CDRP believe that the best way to approach this is not to label 'communities' but to give people the knowledge, support and ability to

make that difference through as wide a range of interactive methods as possible.

This may appear to be an ambitious plan but it is one that is supported at a regional and national level. Lambeth is a borough which can make this agenda work, not just because of the agencies working in the area, but because Lambeth's strength is in the commitment of our communities who want to live and work in a safer and more secure environment.

The partnership have set out below an engagement approach which is based on the following;

- Broad information direct to households and individuals on personal safety, where to get support and advice and how to get involved.
- A range of geographical forums using our current structures and adding specific links through tenants, residents and business forums.
- Specific panels set up on crime themes by area or aimed at reaching specific community groups such as BME, LGBT, disabled or age-related groups.

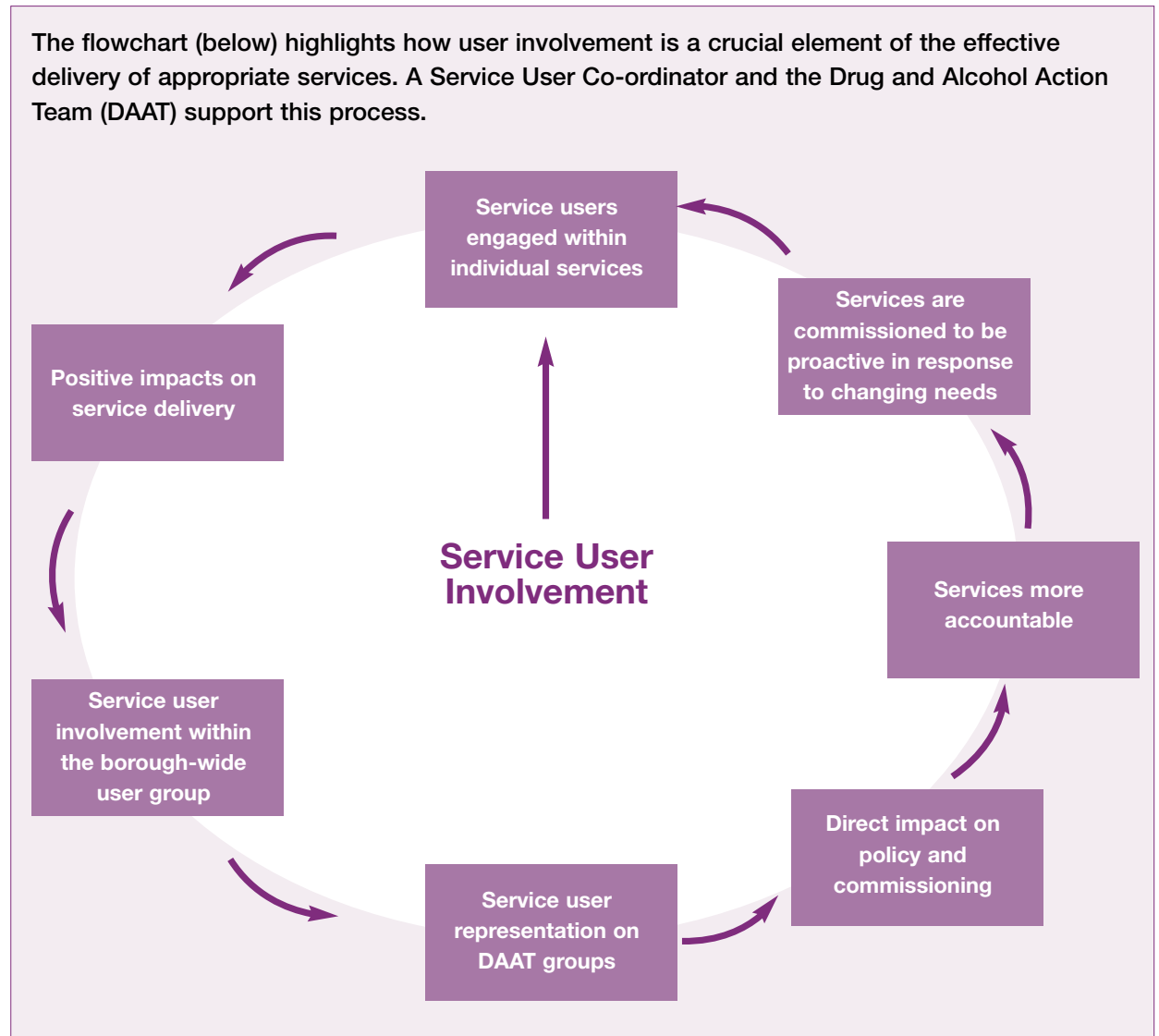
## Drugs and Alcohol

### What do we mean by drugs and alcohol and engagement?

Establishing an effective community-focused engagement process in relation to drugs and alcohol is one of our biggest challenges, in terms of the range of issues involved. Some actions are highlighted below and illustrate the extent of the agenda:

- Continue to work closely with BME communities who are often most at risk of illegal drug markets.
- Support and build capacity to improve life choices and, where required, the ability to access treatment.
- Establish and develop User Forums and include users in other areas related to community safety, health and prevention.
- Undertake awareness training and capacity building at a local and estate level, focusing on communities who are most vulnerable to illegal drug or alcohol-related problems.
- Develop local projects (involving residents in the design and delivery) specifically focusing on problems that they face such as drug users, prostitution or cultural issues. Identify models of good practice and share these across the borough.

The flowchart (below) highlights how user involvement is a crucial element of the effective delivery of appropriate services. A Service User Co-ordinator and the Drug and Alcohol Action Team (DAAT) support this process.



- Support of street sex workers (SSW) from a range of agencies to address substance misuse and other related issues, including homelessness.
- Identify national programmes that may be available which can be used at a local level to support BME or LGBT communities to build long-term support and resources within those communities.
- Improve communication both at a local level and borough-wide particularly through existing forums and committees such as Lambeth First.
- Engage with the street drinker and street population community to improve support and reduce their risk.
- Engage with the business community, particularly the licensing trade, who can play a major role in improving the environmental management of the area and communities that they serve.
- Engage with the people who enjoy the social and night-time economy with a safety and health focus in relation to the impacts of drugs and alcohol.
- Work with BME communities whose cultural perspective on drugs or alcohol may place them in conflict with other communities.

## Violent Crime

### What do we mean by violent crime and engagement?

Violent crime includes any incident, which has either a physical or psychological impact on the victim. This is regardless of whether the incident is defined by behaviour, action, intent or motivation.

Whilst Lambeth has seen some real successes in the reduction of robbery over the last three years, violent crime remains a serious concern for our communities, with a particular focus on:

- Alcohol-related violence, in particular ABH, GBH, domestic violence and common assault
- Sexual assaults
- Violence associated with gangs or groups
- Drug-related violence.

Results from our 796 face-to-face interviews for the audit showed that of those who had experienced violent crime, only 53% reported it to the police. There has also been a reduction in the levels of referrals to Victim Support.

### What did the audit tell us?

- Respondents to the face-to-face survey stated that they had experienced physical mugging and assault in Brixton more than anywhere else.
- 14% said that they had seen a gun in Brixton.
- 19% from North Lambeth reported seeing a gun.
- 55% of respondents cited feeling unsafe because of gangs in an area.
- 51% of interviewees who experienced violent crime in the last year stated that a 'group' were the perpetrators.
- When asked 'Why do you feel unsafe?' 24% cited guns, knives and other weapons.
- Of the 796 face-to-face interviews, 15% said that they had experienced mugging in the last five years and 8.4% had experienced mugging in the last 12 months, with 1.3% being a repeat victim.
- 3.5% of the respondents have been physically assaulted, 2.9% threatened with a knife, 1.9% a victim of hate crime and 1% threatened by a gun.
- 73% of respondents, who had experienced a violent incident, said that the incident was carried out by a stranger.

- Only half of the recent victims of violent crime reported this incident to the Police (53%). Reporting was more common amongst White respondents (26 out of 42 incidents) than it was for Black/Black British victims (11 out of 23 incidents).
- Of those respondents who had experienced a violent incident, nearly 90% reported the incident to family or friends.
- Participants in our focus groups, in particular: LGBT communities, the Asian community and young people, felt it necessary to change their behaviour and appearance in order to reduce the likelihood of being targeted for violence.
- Respondents to our self-completion survey indicated that in the last 12 months, 39% of them or a member of their household had been a victim of crime in Lambeth. Of this percentage, 4.3% had been a victim of physical assault, 2.5% were threatened with a knife and 2% experienced hate crime.
- A significant number of council staff have previously been a victim of crime such as threatening and abusive behaviour, road rage attack and mugging.

In response to these findings our engagement programme will concentrate on:

- Improving our community support provision for victims and witnesses of violent crime, based in local areas.
- Better use of health-related support for victims of sexual assault.
- Establishing a regional Gang Strategy and a Gang Intervention programme.
- Engaging with the licensing trade, businesses and in particular small businesses, health providers and local communities to address violence associated with alcohol, focusing initially on key local areas.
- Working on particular estates where violence against the person is highest.
- Collating data from A&E departments on admissions that are alcohol or drug-related.

## Young People

### **What do we mean by young people and engagement?**

Children and young people under 25 should be central to shaping and delivering appropriate, targeted and successful services that enable them to achieve their aspirations and to have ownership of their rights and responsibilities. There is a clear need, identified through our audit, to support our young people who are often affected by crime, either as victims or as offenders. Ensuring that young people help shape and deliver programmes that help address the disproportionate impact on them will ensure that they are seen as part of the solution to improving community safety, rather than solely as a cause of crime.

### **What did the audit tell us?**

We need:

- Better data and mapping of services for young people.
- To address the community safety issues affecting young people, in particular alcohol and drug misuse, and gangs and guns.

- A significant increase in services for children and young people that place them at the heart of delivery.
- To work to improve relationships between young people and the Police as well as other statutory services, such as the Fire Service.
- Better education around the involvement in and consequences of crime and taking responsibility for their actions.

Of those respondents to our Young People's Community Safety Questionnaire:

- 20% of respondents report crime and only 12% of those reported the crime to the Police. When asked why, the respondents said they do not have much faith in the Police and in their complaint being taken seriously.
- 50% of respondents said they would know where to get help for a drug or alcohol problem.
- 70% indicated they thought drug users are more likely to commit crime and 55% that they are more likely to be a victim of crime.

## Victims and Witnesses

### What do we mean by victims and witnesses and engagement?

Supporting people in our communities who have experienced crime and those who have been witnesses to a crime is an essential part of our focus for two reasons:

1. The impact of a crime does not stop at the victims but influences their friends, family and local community. Our Lambeth Community Safety Audit 2004 highlighted that a victim of crime is more likely to tell a friend or family member than report it to the Police or another public body. How the victim is treated when they do report an incident can be instrumental in influencing how that person, their friends, family and community interact with the Police or a public body in the future. We need to get it right in terms of the victim and their needs.
2. A witness, someone who takes a stand against the minority who cause crime, is the best person to encourage other members of our communities to take action. There are excellent examples of how witnesses and witness groups who, through sharing their own experiences, have supported other witnesses in stopping crime and anti social behaviour.

Victims and witnesses of crime and anti social behaviour have told us that effective engagement for them means four things:

1. Support when the incident happens
2. Support and regular information during the legal processes even when things are not going to plan
3. Support, information, contact and continued security after the legal process
4. The ability to keep control of the process.

The ability to keep control of the process is central to successful engagement. According to our victims and witnesses, many of them feel that they are swept up in a process that has little reference to them and the trauma they have and may be continuing to experience.

### What did the audit tell us?

- 42% of residents surveyed said that drug dealers in the area made them feel unsafe.
- Only 20% of our young people who responded to our Young People's Questionnaire, reported crime and only 12% of these reported the crime to the Police.
- When asked why, the respondents said they do not have much faith in the Police and in their complaint being taken seriously.



**“When they mugged me three times, it wasn't night, it was daytime, twice in the afternoon, and I was fighting with the guy and people were just walking by and nobody cared. I was screaming ‘help me’.”**

*Quote from focus group attendee, Crime and Disorder Audit 2004 consultation.*



## Priority Crime

### What do we mean by priority crime and engagement?

Tackling priority crimes such as burglary, robbery, motor vehicle crime, drug related crime, and anti social behaviour is often seen as the job of the Police and the council. Engaging with our communities over priority crime often focuses on one-way intelligence, from local residents to public bodies.

### What did the audit tell us?

- There is under-reporting across most priority crimes.
- Burglary is becoming more prevalent in non-estate areas.
- There is a lack of support for victims and witnesses.
- Better and more consistent data is needed.
- Further investment in reassurance is needed.
- We need to increase awareness amongst residents, businesses, neighbourhoods and communities about their responsibility and encourage them to take pride in their area.
- Collaborative work with the community around drugs is needed.

- The anti social use of mopeds, vandalism and abandoned cars are key concerns.

Lambeth has a track record of success over the last three years in reducing priority crimes but if we want to continue this success story we need to make sure that:

- All of our communities know what to do to keep themselves and their property safe.
- Communication is two way and effective, particularly for victims of crime and communities who are experiencing crime.
- Community safety is part of other local agendas rather than just a problem on its own. For example, working with young people should focus on life choices and opportunities rather than pure crime diversion and anti-crime messages.
- We establish local community panels to initiate a **Problem Solving**<sup>8</sup> approach to enable residents to make a difference in their local area.

There are excellent examples in our borough, such as St Martin's Estate and Clapham Park, where local communities working with key bodies have made a real difference to priority crime. This has been achieved by focusing on the local needs of residents and the DAAT/CDRP wants to build on these successes.

<sup>8</sup> Problem Solving looks at identifying and dealing with the root causes of a problem, instead of repeatedly responding to the consequences.

## Communication

### What do we mean by communication and engagement?

Effective communication does not just mean telling people what is happening. A clear message from our consultation work throughout our audit, from all of our communities is that they want to be involved in local delivery rather than just being asked about community safety. This was a particularly strong message from our young people.

### What did our audit tell us?

- Findings from our audit consultation indicated that worries about crime tend to be found more commonly amongst women, older people, disabled people, the poor, the victimised and those in communities with little social cohesion.
- More visible Policing, CCTV, wardens or Police Community Support Officers were identified as factors in making people feel safer. Cleaner environments (29%) and better information (15%) were also prioritised.
- Young people who participated in our consultation and focus groups said that increased youth provision as well as the availability of more engaging and innovative activities in existing youth clubs, would help to reduce youth-related crime.

- Findings from the residents' survey indicate what would make them feel unsafe. These are set out below and are also compared to findings from our previous audit.

There are four clear strands of our communications process:

- Information on keeping safe, getting help and how to play a role.
- Activity by agencies which encourage and enable local communities to participate in making their area safe.

- Support of communities through funding awareness or training to take action, or of individuals or groups to take a stand.
- Methods of engagement through committees, forums, panels, e-government or direct to households and individuals by area or through particular panels for BME, LGBT, disabled people or other groups of people within our borough.

### What makes you feel unsafe?

2004 Audit		1998-2001 Audit	
Gangs in the area	55%	Street crime	57%
Reputation of the area	50%	Dark street	42%
Drug dealers in the area	42%	Burglary	35%
Drug users in the area	38%	Dangerous traffic	24%
Guns, knives and other weapons	24%	Drug dealing	19%
Street drinking	21%	Drug use in public	10%

# Chapter 3 Reassurance

## NATIONAL TARGET

**PSA 2: Reassure the public, reduce the fear of crime and anti social behaviour, and build confidence in the Criminal Justice System without compromising fairness**

Making our communities safer is not just about tackling crime. Often our communities, and in particular our vulnerable communities, fear that they will be victims of crime. That fear can be in terms of what they see day to day in their communities, or from national issues such as alcohol and violence, or international issues such as the threat of terrorism.

### What did the audit tell us?

- Our elderly community don't use local services or public transport after dark.
- Our young people feel that they are perceived as committing crime and ignored as the victims of crime.
- Our Black and Minority Ethnic (BME) communities do not feel that they have information or support to access services, particularly if they suffer harassment and intimidation.
- Victims of crime do not feel that they have received adequate support, counselling and advice at a local level to get over the trauma of a crime.
- Communities as well as individuals often feel isolated and powerless to tackle issues that they face where they live and where they work.

- Witnesses often feel vulnerable, not only during the process of going to court, but afterwards.
- Our Lesbian, gay, bisexual and transgender (LGBT) community do not have the kind of support that they need to address the intimidation that they often face on a daily basis.
- Our physically disabled community often feel that services are arranged in such a way that they cannot access them or that they do not respond sensitively to their needs.
- We need to ensure that the public are aware that systems are in place for an appropriate multi-agency response to a terrorist incident.

There have been some real successes in Lambeth in terms of reassuring our communities such as:

- The introduction of wardens and Police Community Support Officers.
- Witness Services at court and a dedicated Witness Suite.
- Home security for vulnerable residents.
- The extension of CCTV.
- Regeneration programmes, which include designing out crime.
- Restorative Justice programmes through our Youth Offending Team.

- Counselling services for adults and young people who are both the direct and indirect victims of crime.
- Investment in home security on our estates and for our elderly and vulnerable residents.
- Security for our small businesses through the Raid Control scheme.
- The excellent work of our Neighbourhood Watches in Lambeth.

The Drug and Alcohol Action Team/Crime and Disorder Reduction Partnership (DAAT/CDRP) wants to place ***making people feel safer*** at the heart of our strategy for the next three years and to build on some of our successes.

We believe that reassurance is about ensuring our communities and those people who live, work, visit and travel in our borough feel safer, more confident and secure. Also that they enjoy the wealth of facilities and cultures that makes Lambeth such a vibrant borough.

We have set out below how we will translate the reassurance agenda through our core themes as well as identifying a number of actions which will be at the heart of making a safer, more confident and secure community.

## Drugs and Alcohol

### What do we mean by reassurance around drugs and alcohol?

There are two clear areas which we need to focus on:

- Addressing drugs and alcohol use and health-related impacts. For example, chronic alcohol use is not criminally recognised and yet cannot be seen as an unrelated issue.
- Reassuring the whole community and reducing fear of harassment and victimisation for all, including drugs and alcohol users.

### What did the audit tell us?

- 30% of Lambeth residents have been offered drugs in last 12 months.
- Residents rated drugs as the biggest problem in Lambeth. Around 60% of residents claimed that drug-dealing (61%) or drug use (59%) were very / fairly serious problems.



**“The drug pushers outside KFC and Coldharbour Lane and also you cannot stand at a bus stop without people coming up to you selling drugs. I don’t have a problem with it, but others can feel intimidated, I can deal with it. I love Brixton for its multiculturalism and cosmopolitanism.”**

*Quote from focus group attendee from the consultation for the Lambeth Crime and Disorder Audit 2004.*



## Violent Crime

### What do we mean by violent crime and reassurance?

Levels of murder and robbery in our borough have fallen in the last two years. Other types of violent crime like Grievous Bodily Harm and minor assault have increased. Our survey of young people told us that 25% of them carry a weapon, including knives, to protect themselves.

Our levels of sexual offences are high and our level of domestic violence abuse is one of the highest in the country.

Certain types of violent crime will only get reported to a family member or a friend.

### What did the audit tell us?

- Violent crime across London has increased.
- It accounts for less than 20% of all recorded crime.
- Domestic Violence and assaults accounted for 50% of violent crime.
- There has been a 2.7% increase in offences against the person in Lambeth (2003-4 – 2002-3).
- There were 11 murders in 2003-4 compared to 15 in 2002-3.

- There has been a 10.6% increase in ABH (242 offences).
- In 2003-4 there were 111 rapes or attempted rapes compared to 107 in 2002-3. Coldharbour ward recorded the highest levels (15 offences).
- GBH offences increase by 28% (352 offences).
- Robbery has decreased by 49% in three years.
- 73% of respondents to our consultation who had experienced a violent offence said it had been carried out by a stranger.
- Only half the victims reported it to the Police.
- Young people feel safe when they carry something to protect themselves.
- Robbery / mugging was commonly experienced by young people. Only 20% of respondents report crime and only 12% of those reported the crime to the Police.
- There is a clear need for closer links with more partner agencies and in particular health providers.
- There is a fear amongst our communities around guns and gangs, especially on our estates.

There is a clear need to:

- Improve community confidence in our Police, Criminal Justice System and public bodies that reporting crime will result in action.
- Develop local community-based victim and witness services, which are accessible and responsive to the needs of the victim.

If we are to reassure our community about violent crime, we have to:

- Ensure that we have the ability to respond in a multi-agency way to support individuals, families or groups who face or have experienced, violence.
- Make it easy to report violence, particularly at a local community level.
- Provide support for victims of violent crime, who often feel most vulnerable, that is sensitive to their needs.
- Make it easier for our communities to know where to get help.
- Make the health and wellbeing of the victim the predominant factor.
- Make sure that those individuals who are caught up in violence have intensive support to change their behaviour.

## Young People

Our Lambeth Community Safety Audit 2004 looked at a range of issues with young people and what made them feel safe and unsafe.

Some key points that clearly emerged were:

- Young people felt that they were not listened to or at times when someone did listen to them no actions were taken.
- That there is a negative view of young people and that they are portrayed as causing crime rather than being the victims of crime.
- That young people are affected by crime and that there is not enough notice taken of young victims.

It is clear from our audit that young people face enormous pressures throughout their early years and in particular through adolescence. As one young person said:

***“Being young in itself is a significant risk factor in Lambeth.”***

### What did our audit tell us?

Of the 336 respondents to our young peoples questionnaire on crime and community safety:

- 188 answered they felt most unsafe because of gangs in the area.
- 184 felt unsafe due to drug dealers in the area.
- 172 felt unsafe because of drug users in the area.

When asked about the sorts of things that made them feel safe:

- Two thirds of the respondents felt safer being in a group.
- One quarter said they carried something to protect themselves.

### Report on young people aged 2–10 years

Young people aged ten years and under were asked to draw pictures depicting what makes them feel safe and unsafe and where they feel safe and unsafe.

- Of the drawings for ‘What/where makes you feel safe’, 78% of young people said that they felt safe at home and 8% said they felt safe with their mums/families.

- 16% of young people drew that they felt unsafe being alone and 15% felt unsafe being on the streets.
- Six focus groups were held with 61 young people aged between five and ten years old and they were asked where they felt safe and unsafe.
- All the young people felt safe at home and with their parents and/or families. The majority of the participants felt safe either in the classroom or at school.
- Many of the young people also mentioned play schemes, adventure playgrounds, youth clubs, after school clubs and the park.
- All the young people said that they felt unsafe on the street / road, being in the dark, alleyways, being around people who were taking drugs, drinking and prostitutes.
- The majority of the young people also mentioned that being alone made them feel unsafe.

## Victims and Witnesses

If we want our communities to take a stand we must make sure that we place the victim or witness at the heart of our community safety agenda.

It is clear from our audit that our communities want to see sensitive, local, community-based support services that cater for their needs.

This is an immense challenge but one that the DAAT/CDRP considers to be the key objective in our reassurance agenda.

It is also one that needs to be extended to various types of crime, including anti social behaviour. There is also clear need for a better integrated multi-agency support service that is responsive and sensitive to the long-term needs of the victims, from the initial report, through to the court process and beyond.

Young people report a lack of confidence in agencies if they report a crime, both in terms of response but also in terms of their own safety and image amongst their peers and community.

Our youth provision and funded programmes, such as Positive Activities for Young People (PAYP), need to identify and support young mentors who can support their peers who are victims of crime.

## What did the audit tell us?

- Young people use gang culture as a means of self protection and to resist peer pressure.
- Young people are the most sceptical group with regards to the effectiveness of statutory agencies.
- They feel that there is insufficient opportunity for them to be part of the solution rather than being seen as the problem of youth crime.
- Between 2003-4, there were 738 young people referred to Victim Support, a decrease of 15% or 127 when compared to 2002-3.
- Young people felt that CCTV did not improve their safety. Although the Police were seen positively in keeping people safe. Young people felt safer in a gang or group.
- Young people feel victimised by stop and search.
- Only half of the recent victims of violent crime reported this incident to the Police (53%). Reporting was more common amongst White respondents (26 out of 42 incidents) than it was for Black/Black British victims (11 out of 23).

## Priority Crime

Lambeth has a track record of successes over the past three years in reducing priority crime such as street crime, residential burglary, robbery and motor vehicle crime. But there is still a lot to do to reassure our communities and to help reduce the fear of crime.

There are three key areas for reassurance and priority crime that the DAAT/CDRP will concentrate on:

- 1.** Effective and targeted communication including information on how to keep yourself and your property safe.
- 2.** Better support for the victims of priority crime starting with repeat victims.
- 3.** A more effective Criminal Justice System.

The first two points are covered under the theme headings in this chapter. In addition, effective criminal justice is an essential part of reassuring our community. Bringing people to justice for their criminal behaviour is vital if we are to encourage more victims and witnesses to come forward. It acts as a key deterrent to those who might commit crime. Equally important and often overlooked, is that effective criminal justice actually creates and reinforces moral boundaries and knowing that action will be taken encourages individuals to report crime. For the victims of crime, who choose

to report what has happened to them, reassurance also means regular contact, feedback and support throughout the process, even when that process may not be as swift as they like. Victims of crime regularly report that they feel powerless. Therefore, regular information, contact and feedback would help them address these feelings.

## Communication

Reassurance should be focused on pro-active communications that prevent crisis management. We need to reassure our community through communications that are accessible, easy to read and regularly updated. They also need to be available for people working and visiting the borough, as much as for people living in Lambeth.

We also need to reassure our community in terms of the levels of crime in our borough. Lambeth crime levels have fallen but the fear of crime remains high, particularly at night time and on public transport. Our communications need to include a clear focus on the threat of terrorism, particularly in terms of the wards affected by the Government Security Zone and ensure that there is a co-ordinated partnership response to an incident. Most importantly we need to make sure that those communities who live and work in these areas are aware of our partnership response and what they can do in the event of a terrorist incident.

But the reassurance agenda and communication is not just about being pro-active. The DAAT/CDRP will use the Lambeth Community Safety Strategy 2005-8 to review how the partner agencies present themselves to our communities, particularly where there is a history of mistrust or loss of confidence.

## What did the audit tell us?

The following tables indicate the community response to our face-to-face interviews with regards to reporting crime.

### Why did you not report the crime to the Police?

The police wouldn't be able to do anything	46%
The police wouldn't take the crime seriously/would not be interested	28%
I don't like the police	22%
I was able to sort the problem out myself	19%
Other	19%
I don't think that it was serious enough	14%
It was unlikely that anyone would get caught	11%
Scared of revenge attacks/ reprisals	8%
Couldn't be bothered to report it	6%
Didn't want to attend court	6%
Didn't think the court would do anything/courts too lenient	3%

### Did you report the incident to anyone else?

Family	48%
Friends	46%
No – did not report it to anyone	14%
No – just the Police	14%
No response	12%
Victim Support	3%
Medical staff	2%
Social Services	1%
Teacher/School	1%
Voluntary/Community organisations	1%

*NB: Residents could give more than one answer. Responses were coded from unprompted comments.*

# Chapter 4 Enforcement

## NATIONAL TARGETS

**PSA 1 – Reduce crime by 20% and further in high crime areas by 2007-8 compared to 2003-4.**

**PSA 3 – Improve the delivery of justice by increasing the number of crimes for which an offender is brought to justice to 1.25 million by 2007-08. Target contributing to the Criminal Justice System PSA.**

## Drugs and Alcohol

### What do we mean by enforcement of drugs and alcohol?

Criminal offences linked to drugs and alcohol misuse are:

- Domestic burglary
- Crack houses
- Theft from a person
- Personal robbery
- Begging
- Prostitution.

Effective enforcement has to incorporate:

- **Effective treatment** – The Drugs Intervention Programme ensures that there is immediate access to support and treatment programmes at each stage of the criminal justice process from the point of charge in the custody suite to post prison release.
- **Effective communication** – which highlights the outcomes of those committing drug and alcohol-related crime. This includes those who fuel drug and alcohol-related crime in our borough through their social habits.

The path that a drug offender would take through the Drug Intervention Programme would be as follows:



### What did the audit tell us?

- The Metropolitan Police data shows 3,078 offences during 2003-4. There were 3,194 offences in 2002-3, hence a decrease of 3.6% (116 offences) from year to year.
- Over <sup>3</sup>/<sub>4</sub> (75.9%, 2335 offences) of the drug-related offences in 2003-4 were drug possession offences. Drug trafficking and prostitution (including kerb-crawling) each accounted for more than 10% of the total number of offences (10.7% or 330 offences and 12.2% or 375 offences respectively).

- 66.7% (2052) of drug-related offences in 2003-4 were cannabis related, as compared to 2002-3.
- There was a 5.3% increase in the number of crack (excluding cocaine) related offences, from 227 offences in 2002-3 to 239 offences in 2003-4.
- There was a 39.8% decrease in the number of heroin (excluding other opiates) related offences, from 133 offences in 2002-3 to 80 offences in 2003-4.
- Drug misuse-related hospital admissions increased from 264 to 382 (45% or 118 admissions) and drug poisoning-related hospital admissions increased from 309 to 379 (22.7% or 70 admissions).
- There were 224 crack house raids in 2003-4 compared to 240 in 2002-3, a reduction of 6.7%. In total, there were 464 crack house raids over the two-year period.
- During 2003-4, 34 council properties were closed after drug activity had been identified on the premises.
- Calls relating to drunkenness increased by 9% from 499 in 2002-3 to 544 2003-04.
- Alcohol-related hospital admissions increased from 774 to 944 (22% or 170 admissions).

## Violent Crime

### What do we mean by enforcement of violent crime?

Those people at the heart of violent crime affect not only the lives of their victims but of their families and the communities around them. They affect the businesses that they target, intimidate others into criminality and limit the choices of our most vulnerable residents. We include gun enabled crime as there is a clear need to continue focusing on gun criminality in our borough building on the success of Trident initiatives.

Whilst we want to create an environment, which prevents violence and support victims of violence, we also believe that we must tackle those who cause violence and we will take a strong partnership approach, focusing on those people who cause intimidation, fear and harassment in our community.

### What did the audit tell us?

- Violent crime is on the rise throughout London boroughs, Lambeth is no exception.
- Ward totals of Crimes Against the Person in Lambeth have increased by 2.7% or 433 offences in 2003-4 when compared to 2002-3.

- In Lambeth 11 murders took place in 2003-4 compared to 15 in 2002-3.
- There were 2516 recorded incidents of ABH in 2003-4 compared to 2274 in 2002-3, an increase of 10.6%.
- In 2003-4 there were 352 recorded incidents of GBH compared to 274 in 2002-3, an increase of 28%. The highest levels recorded for GBH incidents in 2003-4 were Coldharbour with 72 and Ferndale with 50.
- There were 5977 crime-related ambulance calls in 2003-4. The highest levels of calls were made in Coldharbour, Vassall and Ferndale. This compares to 5241 for 2002-3.
- Recorded violent crime cost Lambeth £180m in 2003-4 compared to £185m in 2002-3 and £192m in 2001-2.
- Personal robbery offences have decreased substantially over the last three years. Lambeth has experienced a 49% or 3166 reduction in robbery compared to the position in 2001-2.
- 53% of those people who responded to our face-to-face survey, who had experienced violent crime, reported it to the Police.
- Arterial routes and transport hubs were commonly found within the hotspots of the three priority wards.
- Guns and gangs were a constant concern amongst our communities from our surveys.

## Young People

### What do we mean by enforcement and young people?

- Enforcement is the last resort – where previous attempts at prevention, engagement and intervention have tried and failed.
- Enforcement cannot be used alone it needs a package of support with it.
- Enforcement is a time to reassess that individual's needs and evaluate support they have already received.
- Placing responsibility on a young person and their family to take a more positive route.
- Making young people face the consequences of what they have done in order to make them more responsible for their future actions.

### What did the audit tell us?

- In 37% of all crimes where the suspect was known they were under 21. The majority were male.
- Young people are both the victims and perpetrators of a substantial amount of crime in the borough.
- One in five 16-18 year olds are not in education, training or employment.

- 45% of those accused of possession of cannabis were under 25. 33% of those were accused of supplying cannabis. 14% of those accused were in possession of Class A drugs and 30% of those accused of supplying and with the intent to supply were under 25.
- Young people want to see more Police on the streets and estates.
- Through a young people and guns survey in 2003, 70% of the youths (from 860 interviewed) did not expect to live beyond the age of 25.
- Young people have not had positive experiences from stop and search.

## Victims and Witnesses

Enforcement for victims and witnesses means:

- Knowing that those people who commit crime are brought to justice.
- Appropriate interventions by agencies to ensure that similar offences will not occur.
- Victims will have the ability to address the offender through a Restorative Justice process.
- Victims and witnesses will have information during and after the Criminal Justice System process to keep them safe and so they can be aware of any action being taken.
- The victims or witnesses will be protected and supported from offenders when they take a stand to address criminal or anti social behaviour.

It was clear from our audit that victims and witnesses want to stay in control of the legal process. Often they report feeling that they lose that control particularly in the last stages of a case. Similarly victims and witnesses want to feel that the outcome of legal action, particularly for hate crime, domestic violence and anti social behaviour, reflects the impact on them or the community. In many instances this is not the case and we still have a lot to do if victims and witnesses of crime are to feel that a just society reflects the impact of the crime on their lives.

## What did the audit tell us?

- One third of known victims are aged between 20 and 29 years.
- Referrals to Victim Support decreased by 27% in 2003-4.
- Most victims of serious crime know, or know of, their attacker (Tackling Gun Crime in London, 2004-7).
- National research tells us that it takes on average 35 incidents of domestic violence abuse before a victim reports it to anyone.
- Of those respondents who had experienced a violent incident, nearly 90% reported the incident to family or friends.
- 73% of respondents, who had experienced a violent incident said that the incident was carried out by a stranger.
- Respondents to our face-to-face survey identified the Police, CCTV and wardens or visible presence as priorities in making them feel safer.

There is clearly a need for radical improvements if we are to regain the confidence of our community, particularly those who experience crime more than others.

## Priority Crime

### What do we mean by enforcement of priority crime?

Priority crimes are defined by Public Service Agreement 1 and the following table highlights the targets set for the crimes that make up PSA 1 for this year and proposals for the life of the strategy.

Additional targets table for PSA 1								
PSA 1 To reduce crime by 20% in 2007-8 compared to 2003-4					Proposed reduction targets for FY 06/07 and FY 07/08			
Category	FY 04/05 % Contribution to BCS	FY 04/05 projection	Reduction	FY 05/06	Reduction	FY 06/07	Reduction	FY 07/08
Theft of motor vehicle	6.4%	<b>1665</b>	3%	<b>1615</b>	5%	<b>1534</b>	5%	<b>1458</b>
Theft from motor vehicle	13.4%	<b>3484</b>	4%	<b>3345</b>	5%	<b>3178</b>	5%	<b>3019</b>
Motor vehicle interference and tampering	0.2%	<b>42</b>	0%	<b>42</b>	0%	<b>42</b>	0%	<b>42</b>
Burglary in a dwelling	11.3%	<b>2936</b>	5%	<b>2789</b>	7%	<b>2594</b>	7%	<b>2412</b>
Theft/taking of pedal cycles	3.6%	<b>951</b>	0%	<b>951</b>	2%	<b>932</b>	2%	<b>914</b>
Criminal damage	21.9%	<b>5712</b>	0%	<b>5712</b>	5%	<b>5426</b>	5%	<b>5155</b>
Wounding (ABH & GBH)*	11.0%	<b>2857</b>	3%	<b>2771</b>	3%	<b>2688</b>	3%	<b>2607</b>
Common assault	13.1%	<b>3423</b>	0%	<b>3423</b>	3%	<b>3321</b>	3%	<b>3221</b>
Theft person – pick pocketing	4.3%	<b>1110</b>	0%	<b>1110</b>	0%	<b>1110</b>	0%	<b>1110</b>
Theft person – snatch	4.5%	<b>1176</b>	3%	<b>1141</b>	5%	<b>1084</b>	5%	<b>1029</b>
Robbery of personal property	10.5%	<b>2726</b>	3%	<b>2645</b>	5%	<b>2512</b>	5%	<b>2387</b>
<b>Total</b>	<b>100%</b>	<b>26076</b>	<b>-</b>	<b>25545</b>	<b>-</b>	<b>24422</b>	<b>-</b>	<b>23354</b>

\*This figure includes hate crime, the reduction has been adjusted to reflect this

NB. These figures are indicators only

In addition to the above, anti social behaviour and domestic violence, hate-related crime, and Persistent and Prolific Offenders will be considered as part of the priority crime definition for Lambeth.

### **Persistent Prolific Offenders**

There is clear evidence that a small minority of people commit the majority of crime in the borough. To tackle the problem of persistent and prolific offenders partner agencies intend to work together. We will do this under three strands:

- **Catch and Brought to Justice** – which will actively target and tackle those who are already prolific offenders.
- **Resettle and Rehabilitate** – will work with identified prolific offenders to stop their offending by offering a range of supportive interventions. Offenders will be offered the opportunity for rehabilitation or face a very swift return to the courts.
- **Prevent and Deter** – will work to stop young people engaging in offending behaviours and graduating into prolific offenders.

## **Communications**

In relation to enforcement, effective communication includes:

- Delivery of clear messages on how we, and our communities, can support enforcement.
- Establishing who is responsible for delivering effective communication.
- Understanding who our audiences are. Particularly in terms of enforcement, this will inform the effectiveness of how, where and why we deliver our communications strategy.

Traditionally, there has been an assumption that the police and the Criminal Justice System should take sole responsibility for enforcement. Our aim is to engage numerous different partners and the wider community in enforcement. Our primary task is to let other people know that they have a role to play. Sometimes this is clear, for instance in the area of mental health legislation and the sectioning of individuals where medical professionals take responsibility. At other times it is less obvious, perhaps when parents need to make sure that their children behave well in public or attend school regularly.

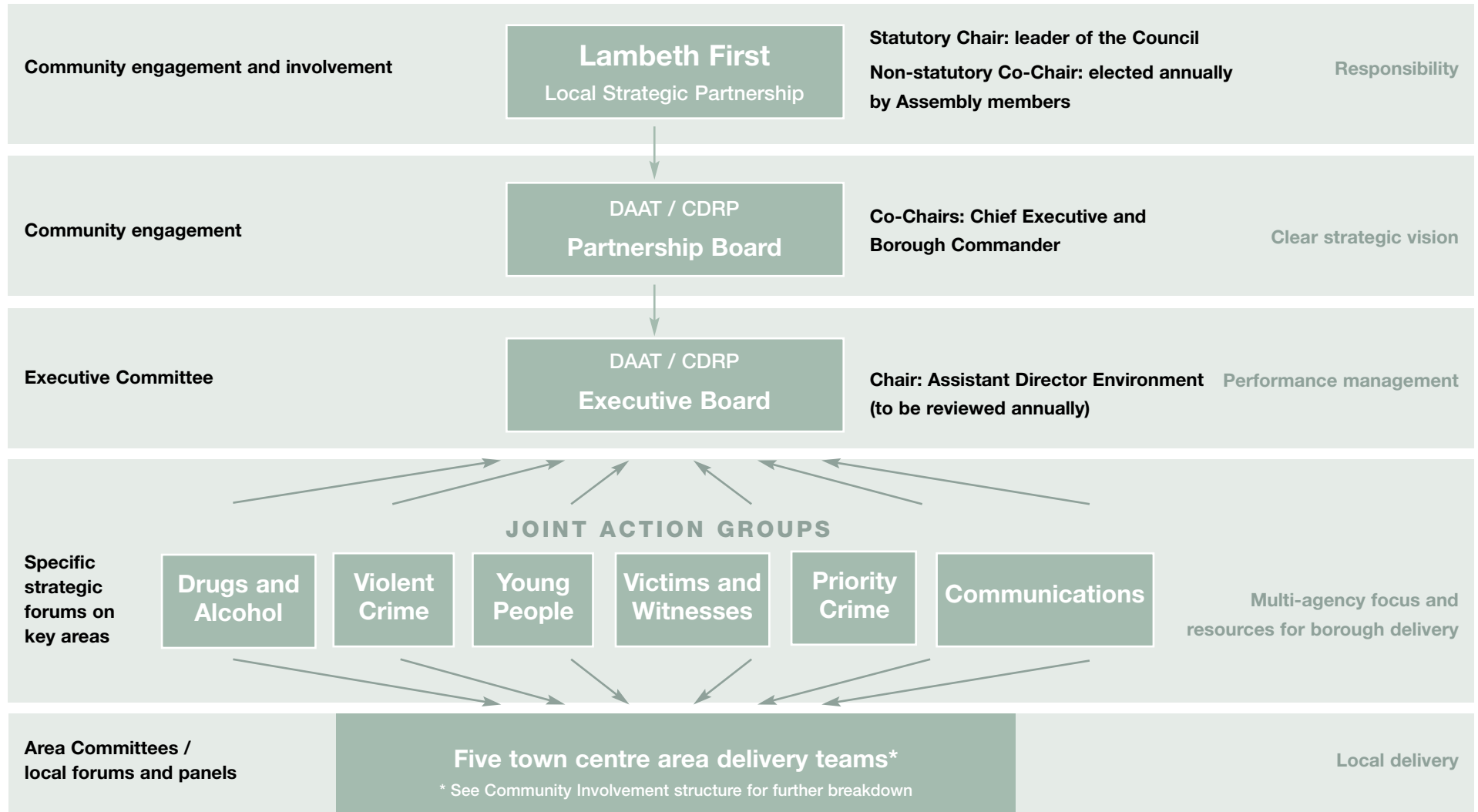
When a number of partners are involved it is especially important that communications between different agencies and individuals are effective.

This is particularly true of the reporting of crimes to and between the Police and other statutory bodies and their subsequent response.

Another role for communications is to improve people's understanding of the Criminal Justice System whilst simultaneously improving the system to meet their needs and realistic expectations. At the same time, improved and/or increased reporting requires an improved initial response and a better process including feedback about final outcomes.

# Chapter 5 Governance

## Governance Structure



## How will we deliver the strategy?

The strategy will be delivered through two levels:

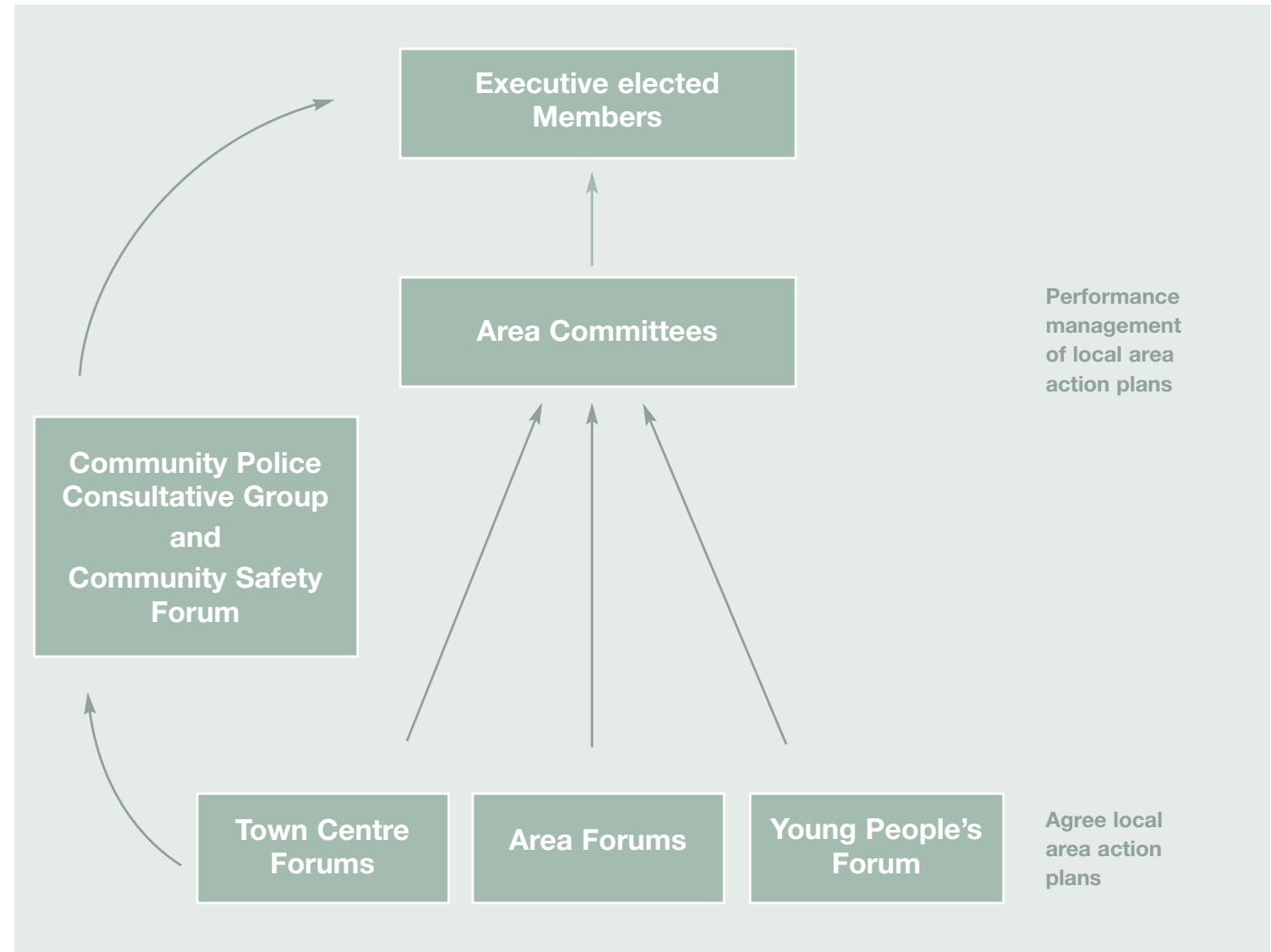
### First level – Governance structure

- DAAT/CDRP – re-establish an effective, transparent structure which ensures that:
  - The overarching strategic structure links with Lambeth First, our local strategic partnership and the borough's Community Strategy.
  - There is a clear performance management framework in place so that we know what works, where, when, how and why.

### Second level – Community Involvement Structure

- There is an on the ground delivery programme working directly with communities and area committees.
- There is community involvement at all levels.

## Community Involvement Structure



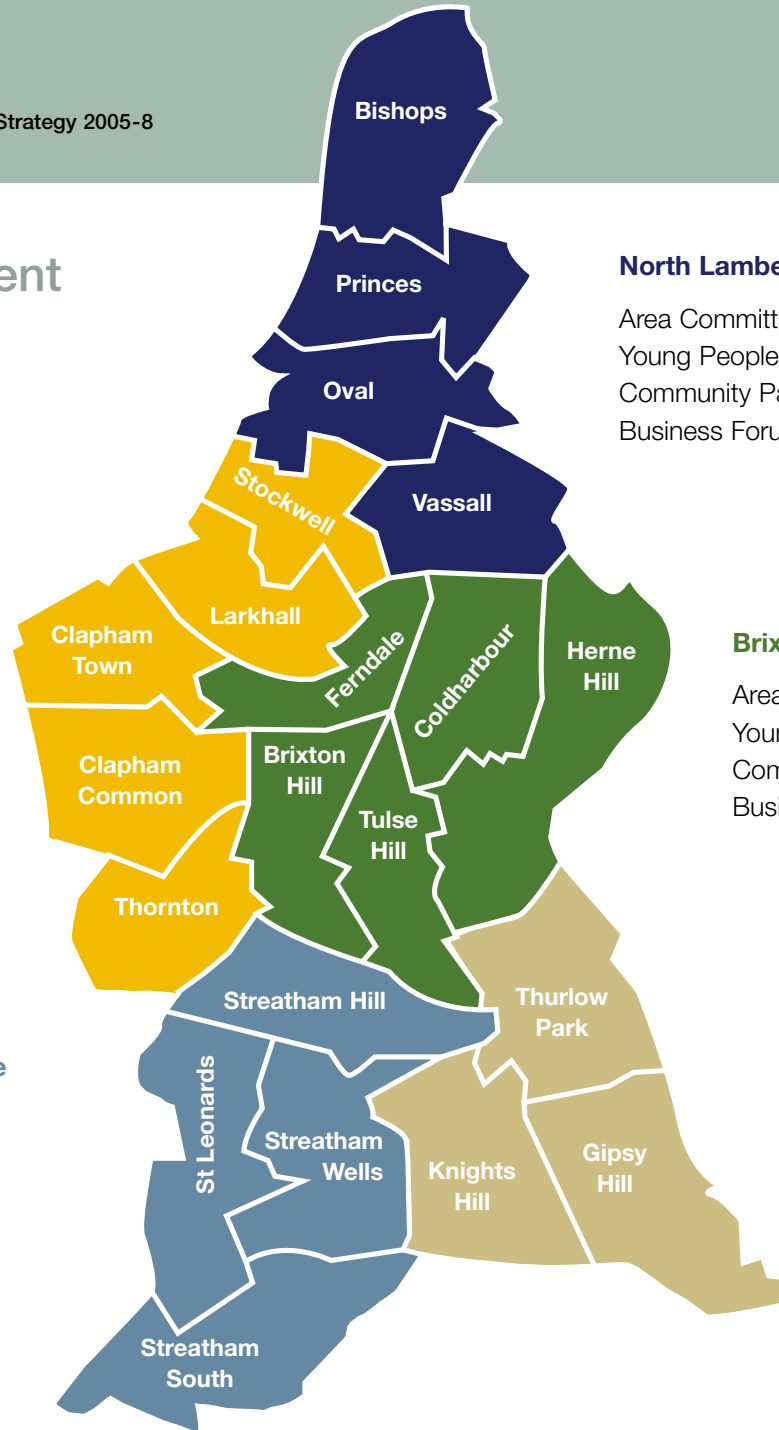
## Community engagement through town centres

### Clapham and Stockwell Town Centre

Area Committee Forum  
 Young People's Forum  
 Community Panel  
 Clapham Park Project  
 Business Forum

### Streatham Town Centre

Area Committee Forum  
 Young People's Forum  
 Community Panel  
 Somalian Forum  
 Business Forum



### North Lambeth Town Centre

Area Committee Forum  
 Young People's Forum  
 Community Panel  
 Business Forum

### Brixton Town Centre

Area Committee Forum  
 Young People's Forum  
 Community Panel  
 Business Forum

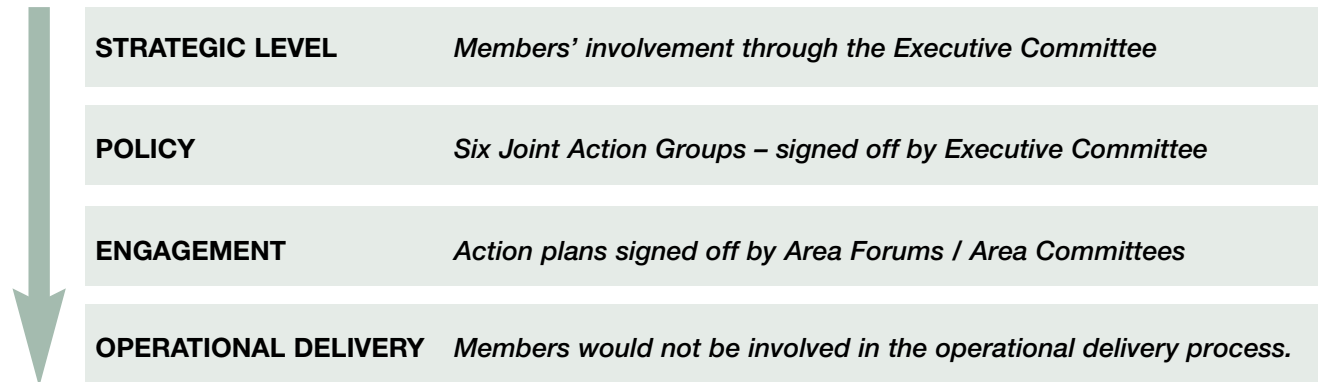
### Norwood Town Centre

Area Committee Forum  
 Young People's Forum  
 Community Panel  
 Business Forum

**Involvement on a borough-wide Community Safety Forum level would come from the following:**

- Domestic Violence Forum
- Community Police Consultative Group
- Anti social Behaviour Strategic Group
- Drug and Alcohol Action Team
- Lesbian, Gay, Bisexual, Transgender Forum
- Tenants' Council
- Leaseholders' Council
- Pensioners' Action Group

**Members' involvement will filter through from strategic level down to engagement level, as specified below:**



# Key focus for Drugs and Alcohol

## Who will take the lead on this – Drugs and Alcohol Joint Action Group

### Drugs and Alcohol Prevention

SHORT TERM 6 months	MEDIUM TERM 6-18 months	LONG TERM 18 months-3 years
<p><b>Continue</b> with the Drugs Education in Schools programme and extend it to include a client support service.</p> <p><b>Ensure</b> that a preventative strategy is included as part of implementing the Licensing Act 2003.</p> <p><b>Publish</b> and distribute an information leaflet on the effects of drugs and alcohol.</p> <p><b>Review</b> and identify gaps in treatment and other support service provision for prostitutes.</p>	<p><b>Extend</b> the Arrest Referrals Scheme to cover peak times in all custody suites.</p> <p><b>Establish</b> protocols with key pubs and clubs around environmental management and responsibility for their customers.</p> <p><b>Consider</b> the needs of prostitutes at service planning level.</p>	<p><b>Work</b> with major stakeholders to deal with anti social and alcohol-related behaviour.</p>

Key focus for Drugs and Alcohol *continued*

SHORT TERM 6 months	MEDIUM TERM 6-18 months	LONG TERM 18 months-3 years
<p><b>Continue</b> work on:</p> <ul style="list-style-type: none"> <li>• Drugs intervention for people from Black and Minority Ethnic communities and</li> <li>• Estate-based training.</li> </ul> <p><b>Start</b> the delivery of training to tier 1.</p>	<p><b>Review</b> the number of BME people and women entering treatment.</p> <p><b>Identify</b> new methods of consulting with local communities on licensing applications.</p>	

## Key focus for Drugs and Alcohol *continued*

### Drugs and Alcohol Reassurance

SHORT TERM 6 months	MEDIUM TERM 6-18 months	LONG TERM 18 months-3 years
<p><b>Improve</b> reporting and links between A&amp;E and the relevant agencies for people with alcohol and/or drugs issues who are perpetrators or victims of violent crime.</p> <p><b>Carry out</b> analytical research into the night-time economy and the relationship between alcohol and violent crime.</p>	<p><b>Develop</b> a common reporting form for people attending A&amp;E for violent crime, drugs and alcohol-related issues.</p>	<p><b>Establish</b> A&amp;E as third party reporting sites for violent crimes and drugs and alcohol issues.</p>

## Key focus for Drugs and Alcohol *continued*

<b>SHORT TERM</b> <b>6 months</b>	<b>MEDIUM TERM</b> <b>6-18 months</b>	<b>LONG TERM</b> <b>18 months-3 years</b>
<p><b>Publicise</b> our partnership approach to closing crack houses through:</p> <ul style="list-style-type: none"> <li>• Highlighting the services available</li> <li>• Leaflet and poster campaign</li> <li>• Informing the community and offering assistance</li> <li>• Ensuring that Police and Drug Squad Officers have leaflets, cards, and directories available</li> <li>• Ensuring that the above publicity materials are made available to Arrest Referral Workers at police stations.</li> </ul> <p><b>Revisit</b> crack house protocols and reinvigorate partnership working by building on successes (e.g. work to support vulnerable tenants and designing out crack houses).</p> <p><b>Facilitate</b> information exchange with the Drug Squad.</p>	<p><b>Ensure</b> better information sharing between drug rehabilitation services and the Police.</p>	<p><b>Develop</b> and improve the dual diagnosis of clients known to both the mental health and drug treatment services.</p>

## Key focus for Drugs and Alcohol *continued*

### Drugs and Alcohol Enforcement

SHORT TERM 6 months	MEDIUM TERM 6-18 months	LONG TERM 18 months-3 years
<p><b>Carry out</b> Clapham case study exploratory pilot as part of research into alcohol-related violence and the night-time economy.</p> <p><b>Set</b> targets and baseline from the above study.</p> <p><b>Adopt</b> a partnership approach to enforcement, involving licensing, the Police, Environmental Services, the CCTV suite, patrolling staff, the security industry, A&amp;E and the alcohol industry (licence holders and national corporations).</p> <p><b>Look at</b> alcohol arrest referral pilots and establish protocols.</p> <p><b>Consider</b> the implications of extending late licences of premises (e.g. so that these coincide with times when the underground service is in operation).</p>	<p><b>As a result</b> of the case study on Clapham, develop a three-year action plan (e.g. effective pub watch, regular A&amp;E links, planning links, treatment agencies).</p> <p><b>Publicise</b> information on services available on arrest.</p> <p><b>Support</b> the introduction of a relevant treatment programme for problematic (not chronic) binge drinkers and support the introduction of a dedicated hospital-based worker.</p> <p><b>Provide</b> information on the back of penalty notices for alcohol advice and help.</p> <p><b>Develop</b> court diversion target for under 25s (e.g. first offence, agree to treatment and counselling).</p>	<p><b>Roll out</b> the alcohol-related violence pilot to all other town centres, reflecting local factors.</p>

## Key focus for Drugs and Alcohol *continued*

<b>SHORT TERM</b> <b>6 months</b>	<b>MEDIUM TERM</b> <b>6-18 months</b>	<b>LONG TERM</b> <b>18 months-3 years</b>
<p><b>Police</b> to drug test perpetrators of domestic violence or assault if drugs or alcohol misuse is suspected as the trigger.</p> <p><b>Ensure</b> tight follow up for offenders after their release, and information exchange through links with the Offender Management Group. Key partners to include:</p> <ul style="list-style-type: none"> <li>• Probation</li> <li>• Police</li> <li>• Housing</li> <li>• Prison Service</li> <li>• Treatment</li> <li>• Education</li> <li>• Social Services.</li> </ul>	<p><b>Co-ordinate</b> treatment availability for binge drinkers – e.g. motivational interviewing, brief intervention.</p> <p><b>Encourage</b> support for young people on arrest, offering drug and alcohol arrest referral and court diversion.</p> <p><b>Review</b> enforcement of bylaws.</p> <p><b>Carry out</b> joint operations on drugs on public transport and ensure effective information exchange.</p>	

# Key focus for Violent Crime

## Who will take the lead on this – Violent Crime Joint Action Group

### Violent Crime Prevention

SHORT TERM 6 months	MEDIUM TERM 6-18 months	LONG TERM 18 months-3 years
<p><b>Evaluate</b> the gun crime initiative to identify best practice.</p> <p><b>Establish</b> annual Lambeth Peace Week.</p> <p><b>Establish</b> the Domestic Violence One Stop Shop.</p> <p><b>Establish</b> effective policy and practice around race hate and homophobic crimes.</p> <p><b>Employ</b> a Hate Crime and LGBT Co-ordinator.</p> <p><b>Continue</b> to support Operation Trident initiatives to reduce drug-related criminal activity.</p> <p><b>Establish</b> effective data collection (adhering to Data Protection guidelines and legislation) with the following partners:</p> <ul style="list-style-type: none"> <li>• Trans-intel for buses</li> <li>• British Transport Police</li> <li>• Crime and Disorder partnership</li> <li>• Data on alcohol triggered crime.</li> </ul>	<p><b>Establish</b> a range of programmes to reduce involvement in gun culture, gun crime, carrying offensive weapons, domestic violence and hate crime.</p> <p><b>Run</b> high profile awareness campaigns around domestic violence, sexual assaults, hate crime and homophobic and transphobic crime.</p> <p><b>Carry out</b> detailed analytical research across transport providers and other key agencies into crime patterns, both in and around transport routes and hubs. Research to make clear recommendations in terms of providing a safer journeys programme.</p>	<p><b>Support</b> strategies to encourage the take up of benefits.</p> <p><b>Foster</b> greater intelligence around the understanding of guns and violent crime and domestic violence and hate crime, with a range of programmes in place built on effective evaluation.</p> <p><b>Extend</b> awareness campaigns to other key areas of violent crime, particularly alcohol-related violence.</p> <p><b>Introduce</b> a crime reduction plan for each of the priority transport interchanges, including an awareness campaign.</p> <p><b>Hold</b> a ‘Tackling violent crime in Lambeth’ conference.</p>

Key focus for Violent Crime *continued*

SHORT TERM 6 months	MEDIUM TERM 6-18 months	LONG TERM 18 months-3 years
<p><b>Carry out</b> analytical research into the impact of alcohol-related violent crime on our A&amp;E and health agencies.</p> <p><b>Establish</b> a Lambeth Gang Intervention Programme involving young people as part of the group.</p> <p><b>Support</b> personal safety classes aimed at vulnerable groups including young people and women.</p>	<p><b>Develop and co-ordinate</b> the implementation of a community engagement plan, ensuring a wide range of views are taken into account from tenants, established forums, faith groups, BME communities, young people and disabled people.</p> <p><b>Work</b> with established groups including Neighbourhood Watch, through initiatives including Good Neighbourhood Declarations and the reinforcement and expansion of Neighbourhood Watch areas.</p> <p><b>Distribute</b> LGBT reporting cards at transport hubs, clubs, saunas and restaurants.</p> <p><b>Carry out</b> an audit of what violent crime support groups exist, and establish a common referral process across agencies.</p>	<p><b>Establish</b> whole family support schemes looking at best practice, such as the Dundee Family Project.</p> <p><b>Influence</b> and shape long-term environmental management plans through Section 17 and in particular the Unitary Development Plan, planning and transport hubs.</p>

## Key focus for Violent Crime *continued*

### Violent Crime Reassurance

SHORT TERM 6 months	MEDIUM TERM 6-18 months	LONG TERM 18 months-3 years
<p><b>Clarify</b> policies on guns, knives and replica guns.</p> <p><b>Train</b> school staff to spot signs of domestic violence (DV) and abuse.</p> <p><b>Adopt</b> a voluntary code for businesses and retailers around the sale of replica guns.</p>	<p><b>Carry out</b> six Operation Trident operations per year via the CCTV suite.</p> <p><b>Carry out</b> awareness programme in schools on guns, knives and the impact they have on the community.</p>	<p><b>Improve</b> support service provision to include the consideration of housing of victims of domestic violence.</p>

Key focus for Violent Crime *continued*

SHORT TERM 6 months	MEDIUM TERM 6-18 months	LONG TERM 18 months-3 years
<p><b>Improve</b> security at entertainment venues with the Security Industry Authority.</p>	<p><b>Carry out</b> detailed analysis of violent crime in the borough. Back this up with regular hotspot analysis from the DIP, PPO and Housing.</p> <p><b>Develop</b> a matrix of interventions for violent offenders.</p>	<p><b>Set up</b> Joint Service Centres and A&amp;E third party reporting sites for violent crime.</p> <p><b>Establish</b> a protocol for links between the Criminal Justice System and local partnership enforcement.</p> <p><b>Research</b> how we make assessments of young people who commit violent crime, with particular reference to sexual offences.</p> <p><b>Set up</b> a persistent violent offenders review panel, including key partners:</p> <ul style="list-style-type: none"> <li>• Housing</li> <li>• Police</li> <li>• Lambeth Primary Care Trust</li> <li>• Regulatory Services</li> <li>• TfL Crime Prevention</li> <li>• Social Services</li> <li>• Education</li> <li>• Youth Offending Team</li> <li>• Probation</li> <li>• Prison.</li> </ul>

# Key focus for Young People

## Who will take the lead on this – Young People’s Joint Action Group

SHORT TERM 6 months	MEDIUM TERM 6-18 months	LONG TERM 18 months-3 years
<p><b>Undertake</b> further analysis of statistics and other qualitative information to assess the impact of crime generators on deprivation.</p> <p><b>Establish</b> five town centre based young people’s forums to advise on youth provision and opportunities (based on recommendations from the OFSTED review of youth provision and the results from peer inspections).</p> <p><b>Consult</b> and develop a three-year Youth Justice Plan 2005 to 2008.</p> <p><b>Work</b> with the Youth Council and Lambeth Community Police Consultative Group to form a Youth Panel as part of our consultation and accountability process.</p>	<p><b>Target</b> work with young people either being exploited or at risk of being exploited and raise awareness of prostitution with young people in schools, youth clubs, etc.</p> <p><b>Actively involve</b> young people in the design and delivery of youth provision with ongoing peer mentoring.</p> <p><b>Implement</b> a plan focusing on the priorities identified, in particular the prevention of offending, reduction in the rates of reconviction and address differential outcomes based on race.</p> <p><b>Ensure</b> that preventing crime and reducing the fear of crime amongst young people is a focus of the Children and Young People’s Strategic Partnership.</p> <p><b>Promote</b> the use of positive role models for young people.</p> <p><b>Extend</b> Miss Dorothy.com to three other secondary schools and their feeder schools.</p>	<p><b>Develop</b> a multi-agency research team to assist the partnership on long-term prevention programmes linked to the Community Strategy.</p> <p><b>Establish</b> a programme of positive life choices for young people to break the cycle of drug supply and dependency.</p>

Key focus for Young People *continued*

SHORT TERM 6 months	MEDIUM TERM 6-18 months	LONG TERM 18 months-3 years
<p><b>Develop</b> the Lambeth Youth Pledge which will articulate our commitment to young people across all service provision.</p>	<p><b>Support</b> the Youth Council to take forward the recommendations of young people consulted in the borough, to direct delivery of crime reduction programmes.</p> <p><b>Communicate</b> and advertise the Youth Pledge in different media. Set targets to measure delivery against the pledge and monitor performance.</p> <p><b>Secure funding</b> to extend programmes building on innovation developed from pilots. Involve children and young people, their parents and carers in the evaluation of the pilots.</p> <p><b>Pilot</b> the programmes in selected schools and other settings. Evaluate the impact of the programme using peer inspection.</p>	<p><b>Ensure</b> that young people are represented at all levels of the Partnership with a range of models in place to ensure young people's views are heard and acted on.</p> <p><b>Firmly establish</b> out of school learning throughout the borough. Extend and expand the programme to include inter-generational workshops and links with whole communities.</p>

## Key focus for Young People *continued*

### Young people Reassurance

SHORT TERM 6 months	MEDIUM TERM 6-18 months	LONG TERM 18 months-3 years
<p><b>Extend</b> the Restorative Justice programme into schools.</p> <p><b>Extend</b> the Safer Schools Partnership.</p> <p><b>Review</b> the impact of the Positive Activities for Young People programme and make it more focused on long-term support for those at risk of causing crime.</p>	<p><b>Patrols</b> outside targeted schools at flare up times for offences.</p> <p><b>Secure</b> medium and long-term funding for core Youth Council reassurance activities</p> <p><b>Carry out</b> parenting classes through the Behavioural Improvement Plan, Youth Offending Team and individual schools.</p> <p><b>Extend</b> the Voluntary Cadets Core Programme.</p> <p><b>Raise</b> the profile of the positive potential of young people in neighbourhood areas.</p>	<p><b>Roll out</b> a peer mentoring programme through the Youth Service.</p> <p><b>Establish</b> three fully-serviced extended schools to incorporate a victim support service.</p> <p><b>Establish</b> a process for young people to carry out audits of their estates (link with Housing Officers or the Youth Council) and estate inspections following the peer inspections of the youth provision model.</p>

## Key focus for Young People *continued*

<b>SHORT TERM</b> <b>6 months</b>	<b>MEDIUM TERM</b> <b>6-18 months</b>	<b>LONG TERM</b> <b>18 months-3 years</b>
<p><b>Carry out</b> education and publicity campaigns on the consequences of pupils not attending school (e.g. fewer opportunities, penalty notices and court action).</p> <p><b>Introduce</b> awareness programme for schools staff on exclusion classifications in relation to drug-related exclusions.</p> <p><b>Youth Offending Team (YOT)</b> to set up steering group for the Resettlement and Aftercare Provision (RAP) programme.</p> <p><b>Introduce</b> and embed behaviour policies on bullying and ensure consistency across schools.</p> <p><b>Identify</b> and support work that looks at reintegrating young Lambeth residents from Young Offenders' and Mental Health Institutions back into the community.</p>	<p><b>Introduce</b> information-sharing strategy for professionals on young people and criminal justice e.g. for use in intensive case management.</p> <p><b>Embed</b> Restorative Justice in schools already using it and investigate ways of extending to further schools (work to be led by the YOT).</p> <p><b>Formalise</b> process map for penalty notices, court action and the involvement of CAMHS, the PCT and substance misuse.</p> <p><b>Introduce</b> and embed a policy for exclusions for substance misuse: look at delivering treatment within schools. Delivery of seamless tier 1-3 interventions at source.</p> <p><b>Reassess</b> the effectiveness of case management care plans to address mental health and substance misuse more effectively.</p> <p><b>Progress</b> RAP programme for young offenders, looking at reintegration and rehabilitation of young people from Lambeth from Young Offenders' Institutions into the community.</p>	<p><b>Reassess</b> the membership of the review team for Prolific and other Priority Offenders (PPO) for young people to ensure that their needs are addressed holistically.</p> <p><b>Development</b> of community-based forensic psychology team, either cross-borough or through sectional secondment of staff in existing team.</p> <p><b>Look at</b> cross-borough commissioning to support young people's reintegration into the community prior to their departure from Young Offenders' and Mental Health Institutions.</p>

# Key focus for Victims and Witnesses

Who will take the lead on this – Victims and Witnesses Joint Action Group

## Victims and Witnesses Prevention

SHORT TERM 6 months	MEDIUM TERM 6-18 months	LONG TERM 18 months-3 years
<p><b>Improve</b> information and education of the public around enforcement processes, e.g. legislation (criminal/civil) and available support services.</p> <p><b>Ensure</b> prompt feedback of outcomes to communities and individuals.</p> <p><b>Fund</b> additional security for vulnerable elderly and disabled residents.</p>	<p><b>Continue</b> to develop domestic violence (DV) One Stop Shop, and produce literature about available support.</p> <p><b>Publicise</b> new DV court in Camberwell.</p> <p><b>Make sure</b> available legislation is properly and effectively implemented and if necessary lobby for changes in the law.</p> <p><b>Increase</b> numbers of third party reporting sites and ensure that they are accessible and well advertised.</p> <p><b>Officers</b> with a patrolling remit to carry out awareness campaigns in schools on How to avoid being a victim, What happens if you are a victim and What to expect after a crime is reported. Emphasis to be on active involvement rather than giving out leaflets.</p>	<p><b>Investigate</b> the possibility of developing community-based third party reporting sites such as Joint Service Centres, along with outreach workers.</p>

Key focus for Victims and Witnesses *continued*

SHORT TERM 6 months	MEDIUM TERM 6-18 months	LONG TERM 18 months-3 years
<p><b>Ensure</b> that there is stronger community safety representation on the Local Criminal Justice Board.</p> <p><b>Identify</b> key professionals who can advise and offer support to young victims and witnesses.</p> <p><b>Establish</b> a buddy system for victims and witnesses.</p> <p><b>Fund and promote</b> 'Message in a bottle' scheme for older residents.</p>	<p><b>Ensure</b> that Housing works with Witness Protection so victims of crime (including victims of domestic violence) are considered in Lambeth Housing policy.</p> <p><b>Continue</b> to incorporate personal safety questions into the next staff survey and track against the baseline established in 2003-4.</p> <p><b>Ensure</b> that Witness Protection works with other community groups who are non-tenure specific.</p> <p><b>Investigate</b> establishing a project to identify community representatives (see Oldham example) who would be willing to visit other community groups and share their positive experience about giving evidence.</p> <p><b>Community</b> victims support service to be piloted to run in one to two town centres.</p> <p><b>Establish</b> a family victim support service.</p> <p><b>Ensure</b> that representatives from Witness Protection go out and talk to communities.</p> <p><b>Establish</b> a partnership approach to dealing with domestic violence.</p>	<p><b>Establish</b> an effective post-court process of support and contact, particularly for victims of anti social behaviour, domestic violence and hate crime.</p> <p><b>Explore</b> the feasibility of a Lambeth reporting hotline.</p>

## Key focus for Victims and Witnesses *continued*

SHORT TERM 6 months	MEDIUM TERM 6-18 months	LONG TERM 18 months-3 years
<p><b>Develop</b> a scheme that would train outreach workers to link with local communities to support victims and witnesses (particularly victims of domestic violence).</p> <p><b>Review</b> and develop third party reporting processes particularly for BME, LGBT, young people and other vulnerable groups.</p> <p><b>Set up</b> a satellite video link for victims to reduce the issues around court attendance.</p>	<p><b>Link</b> with PCT – Health centres, A&amp;E and GP surgeries so that they have information and can give advice to victims and witnesses.</p> <p><b>Work</b> with faith groups so they can act as advocates for victims and witnesses.</p> <p><b>Pilot</b> support services from Joint Service Centres.</p> <p><b>Agree</b> a protocol with the courts on supporting victims and witnesses, particularly in cases of anti-social behaviour.</p> <p><b>Integrate</b> victims into the justice process, though Restorative Justice with particular emphasis on schools and through appropriate adult services (e.g. Probation, Prisons, community groups).</p>	<p><b>Ensure</b> that special events such as Black History Month, LGBT History Month and Peace Week incorporate initiatives to support victims and witnesses.</p> <p><b>Establish</b> and fund a capacity-building programme, focusing on victim and witness support through community-based groups.</p>

Key focus for Victims and Witnesses *continued*

SHORT TERM 6 months	MEDIUM TERM 6-18 months	LONG TERM 18 months-3 years
<p><b>Identify</b> best and emerging good practice nationally.</p> <p><b>Bid</b> for resources to improve existing services.</p>	<p><b>Make</b> links with the other key Lambeth First partners.</p> <p><b>Expand</b> services for victims and witnesses with a particular focus on the needs of young people, and victims of anti social behaviour, violent crime and hate crime.</p> <p><b>Provide</b> training for key support services on the needs of victims and witnesses.</p> <p><b>Establish</b> wet centres for street drinkers to reduce their victimisation.</p> <p><b>Establish</b> a joint multi-agency training programme around reassurance and supporting victims and witnesses.</p>	<p><b>Develop</b> an increased focus and service provision geared to the needs of victims and witnesses with improved access to statutory agencies and community-based provision.</p>

# Key focus for Priority Crime

## Who will take the lead on this – Priority Crime Joint Action Group

### Priority Crime Prevention

SHORT TERM 6 months	MEDIUM TERM 6-18 months	LONG TERM 18 months-3 years
<p><b>Evaluate</b> work with children and young people as part of the Safer Schools Partnership and other initiatives including PHSE and citizenship education</p> <p><b>Continue</b> development work for KARROT scheme.</p> <p><b>Better information</b> to the community on crime prevention measures, particularly key messages, times of the year and locations.</p> <p><b>Ensure</b> that crime design standards and environmental improvements are included in all regeneration and major refurbishment programmes.</p>	<p><b>Identify</b> and address gaps in provision and support development of networks that improve the integration of ex-offenders into the broader social inclusion focus.</p> <p><b>Extend</b> programmes both within schools and out of school settings that educate and divert young people away from crime and anti social behaviour. In particular secure resources and implement the KARROT scheme which awards good school attendance and behaviour.</p> <p><b>Consider</b> relocation of bus stops on Brixton High Street to reduce opportunities for crime.</p> <p><b>Review</b> existing networks that support ex-offenders, including Probation, the Police and Prisons.</p> <p><b>Establish</b> a Prevent and Deter multi-agency strategy to address Prolific and other Priority Offenders.</p>	<p><b>Develop</b> ex-offender co-ordination networks and interventions.</p> <p><b>Carry</b> out an assessment impact of the KARROT scheme in pilot schools and if appropriate extend to other schools.</p>

Key focus for Priority Crime *continued*

SHORT TERM 6 months	MEDIUM TERM 6-18 months	LONG TERM 18 months-3 years
<p><b>Give</b> further support for peer mentoring programmes through identified agencies and community groups.</p> <p><b>Provide</b> basic information to people and practical tips, on how to keep safe, and where to get support.</p>	<p><b>Further</b> develop the Safer Neighbourhoods Initiative provision and how the community engages with these.</p> <p><b>Identify</b> cross-cutting interventions that aim to address the causes of crime and deprivation.</p> <p><b>Map</b> current provision and work with perpetrators to determine how we can deliver an effective PPO programme.</p>	<p><b>Train</b> key community members to support ex-offenders prior to their release and following their release into the community.</p> <p><b>Develop</b> anti social behaviour community support as an extension of the case review process to increase community confidence and support.</p>

## Key focus for Priority Crime *continued*

### Priority Crime Reassurance

SHORT TERM 6 months	MEDIUM TERM 6-18 months	LONG TERM 18 months-3 years
<p><b>Consult</b> with the community on Brixton Central Square and the restructuring plans for the area around the Oval, Windrush Square and St Matthew's. Ensure transport considerations are incorporated into plans.</p>	<p><b>Ensure</b> tackling domestic violence is considered in Lambeth Housing service planning.</p> <p><b>Ensure</b> single women with no children who have experienced domestic violence are considered in Housing service planning.</p> <p><b>Consider</b> the feasibility of establishing a multi-partnership visible presence at the borough's key transport interchanges.</p> <p><b>Review</b> the pilot scheme of providing safe havens for people to go if they fear for their safety, including newsagents, pharmacies and libraries.</p>	<p><b>Consider</b> new ways of dealing with domestic violence. The victim currently has to 'uproot' to escape their violent partner in most cases, potentially cutting themselves off from their support networks, including their friends, family and children's schools.</p> <p><b>Maintain</b> and extend visible presence in the borough, engendering community recognition and interaction.</p>

Key focus for Priority Crime *continued*

SHORT TERM 6 months	MEDIUM TERM 6-18 months	LONG TERM 18 months-3 years
<p><b>Carry out</b> an intelligence and analysis exercise to identify specific geographic areas suitable for partnership approaches to enforcement and determine order of priority for rollout.</p>	<p><b>Develop</b> a partnership approach to enforcement, learning from best practice from the Operation Refresh model which involves operations against ticket touts and working with Environmental services.</p> <p><b>Encourage</b> the reporting of designated offences including domestic violence.</p> <p><b>Ensure</b> publicity of changes to legislation to relevant partners i.e. a power of arrest for common assault.</p> <p><b>Publicise</b> a positive arrest policy.</p> <p><b>Co-ordinate</b> police enforcement on prostitution through a dedicated Vice Squad, disrupting 'supply' and 'demand'.</p> <p><b>Establish</b> a kerb crawler re-education programme.</p>	<p><b>Assess</b> results to date as to whether the PSA 1 target is being met.</p> <p><b>Subject</b> to evaluation, secure longer-term funding to address the causes of women going into prostitution.</p> <p><b>Evaluate</b> the effectiveness of the kerb crawler re-education programme.</p>

# Key focus for Communication

Who will take the lead on this – **Communication Joint Action Group**

## Communication Prevention

SHORT TERM 6 months	MEDIUM TERM 6-18 months	LONG TERM 18 months-3 years
<p><b>Promote</b> community safety training for council officers, Members and DAAT/CDRP officers, with a view to extending it to the wider community.</p>	<p><b>Support</b> the establishment of a business forum in each of the five town centre areas to develop best practice in crime prevention.</p> <p><b>Promote</b> work with and develop links into the business community in relation to targeted projects carried out by the DAAT/CDRP.</p> <p><b>Promote</b> a rolling programme of community clean up events in local areas.</p> <p><b>Promote</b> and publicise work on Operation Refresh.</p> <p><b>Increase</b> the proactive approach to publicity around those who are convicted of drug-related offences to encourage tougher enforcement of the people who come into Lambeth to buy drugs.</p> <p><b>Improve</b> links with the voluntary and community sector to aid the delivery of community safety priorities.</p>	<p><b>Promote</b> the work and achievements of the Drug and Alcohol Joint Action Group on drug couriership.</p>

Key focus for Communication *continued*

SHORT TERM 6 months	MEDIUM TERM 6-18 months	LONG TERM 18 months-3 years
<p><b>Encourage</b> local communities to take responsibility and to play a part, for instance by coming forward as witnesses and reporting crime. Identify and circulate information through community networks in Lambeth.</p> <p><b>Adopt</b> an Engagement Charter by June 2005.</p> <p><b>Develop</b> a diversity monitoring form for attendees to use at key local DAAT and Community Safety meetings. Including Safer Neighbourhood Initiative community panels, delivery teams, business forums, young people's forums and community safety days. Monitor in year one to establish a baseline.</p>	<p><b>Investigate</b> the incorporation of key community safety messages on existing mailings such as council tax or parking permits as appropriate.</p> <p><b>Raise</b> awareness about what the DAAT/CDRP is doing to address kerb crawling and street sex workers, particularly in those communities most affected.</p> <p><b>Establish</b> clear baselines for service use and recommendations for service improvements with respect to hate crimes by September 2005. Set clear targets for service improvements in years two and three.</p> <p><b>Develop</b> a transparent commissioning framework for community safety related funds in year one (2005-6). Monitor number of successful and unsuccessful applications from organisations, specifically targeting BME communities and ensure this reflects the borough's demographics.</p>	<p><b>Work</b> closely with the other JAGs and Lambeth Community Police Consultative Group in establishing effective community panels.</p>

## Key focus for Communication *continued*

### Communication Reassurance

SHORT TERM 6 months	MEDIUM TERM 6-18 months	LONG TERM 18 months-3 years
<p><b>Develop</b> an effective communication strategy for the DAAT/CDRP, to include costs and actions.</p> <p><b>Promote</b> positive messages about community safety in Lambeth.</p> <p><b>Work</b> towards ensuring that partners act together in a co-ordinated way for all publicity, media and educational materials.</p> <p><b>Produce</b> information for communities living in the identified Government Security Zone raising awareness of what to do in a terrorist incident.</p>	<p><b>Continue</b> to improve communication and information-sharing between partners.</p> <p><b>Investigate</b> the potential use of communications media aimed at groups which under-report, e.g. texting for young people, to encourage reporting and feedback.</p> <p><b>Develop</b> campaigns to educate local residents and businesses about the role they can play in enforcing appropriate legislation.</p> <p><b>Work</b> with support organisations for vulnerable and elderly residents to reassure people.</p> <p><b>Develop</b> information on safer pubs and clubs and safer clubbing in the borough including access to drink testing facilities in key pubs and clubs.</p>	<p><b>Publish</b> information on community safety agencies and support available, including reporting options.</p>

Key focus for Communication *continued*

SHORT TERM 6 months	MEDIUM TERM 6-18 months	LONG TERM 18 months-3 years
<p><b>Ensure</b> clarity in communications messages, e.g. increase in reported drug crime means that we are being more successful in tackling drugs crime.</p>	<p><b>Review</b> the community safety component of the Lambeth website and tie in awareness / advertising campaigns. Options include:</p> <ul style="list-style-type: none"> <li>• Feedback facility so people can e-mail through their concerns and make sure that responsibility for reading and responding to these is allocated.</li> <li>• Facility for reporting crime / enviro-crime / anti social behaviour.</li> </ul> <p><b>Develop</b> a range of 'What if' guides for the community, giving information on crime.</p> <p><b>Establish</b> a 'buddy' system for carers and workers to improve contact and support.</p> <p><b>Clarify</b> procedures amongst agencies to ensure victims and witnesses of crime and community safety have immediate and direct support.</p> <p><b>Use</b> joint service centres as local community safety 'surgeries' as part of early intervention and support.</p>	<p><b>Assist</b> in producing a multi-agency route map for staff who believe the person presenting may have been a victim of crime.</p>

# Glossary

## A

A&E	Accident & Emergency
ABH	Aggravated Bodily Harm
AD	Assistant Director
ASBO	Anti-Social Behaviour Order

## B

BAF	Brixton Area Forum
BCS	British Crime Survey
BME	Black and Minority Ethnic
BTP	British Transport Police

## C

CAMHS	Child and Adolescent Mental Health Services
CCTV	Closed Circuit Television
CDRP	Crime and Disorder Reduction Partnership
CEN	Community Empowerment Network
CJIP	Criminal Justice Intervention Programme (now called DIP)
CJS	Criminal Justice System
CPCG	Community Police Consultative Group
CST	Community Safety Team

## D

DAAT	Drug and Alcohol Action Team
DIP	Drug Intervention Programme (formerly CJIP)
DV	Domestic Violence

## F

FY	Financial Year
----	----------------

## G

GBH	Grievous Bodily Harm
GP	General Practitioner
GOL	Government Office for London

## H

HPU	Homeless Persons Unit
-----	-----------------------

## I

IMD	Index of Multiple Deprivation
-----	-------------------------------

## K

KARROT	Scheme which rewards school attendance
--------	--

## L

LAT	London Action Trust
LGBT	Lesbian, Gay, Bisexual and Transgender
LSP	Local Strategic Partnership (Lambeth First)
LVAC	Lambeth Voluntary Action Council

## M

MPS	Metropolitan Police Service
-----	-----------------------------

## N

NTA	National Treatment Agency
-----	---------------------------

## P

PAYP	Positive Activities for Young People
PCSO	Police Community Support Officer
PCT	Primary Care Trust
PSHE	Personal, Social and Health Education
PPO	Prolific and other priority offender
PSA	Public Service Agreement

## R

RAP	Resettlement and Aftercare Provision
-----	--------------------------------------

## S

SOA	Super Output Area
-----	-------------------

## T

TNOs	Total Notifiable Offences
------	---------------------------

## Y

YOT	Youth Offending Team
-----	----------------------

Should you have any queries please contact:

**Community Safety Team**

London borough of Lambeth  
2nd Floor  
205 Stockwell Road  
London SW9 9SL

t 020 7926 2733

e [cedcomsafety@lambeth.gov.uk](mailto:cedcomsafety@lambeth.gov.uk)

w [www.lambeth.gov.uk](http://www.lambeth.gov.uk)

If you would like this information in large print, braille, audio tape or another language, please contact 020 7926 2733.

**Spanish**

Si desea esta información en otro idioma, rogamos nos llame al 020 7926 2733

**Portuguese**

Se desejar esta informação noutro idioma é favor telefonar para 020 7926 2733

**French**

Si vous souhaitez ces informations dans une autre langue veuillez nous contacter au 020 7926 2733

**Bengali**

এই তথ্য অন্য কোনো ভাষায় আপনার প্রয়োজন হলে অনুগ্রহ করে ফোন করুন 020 7926 2733

**Twi**

Se wope saa nkaeboy yi wo kasa foforo mu a fre 020 7926 2733

**Yoruba**

Tí ẹ ba ẹ imoràn yíí, ní èdè Òmiràn, ẹjọ, ẹ kàn wà l'ágogo 020 7926 2733