



2005/06

Safer Lambeth Partnership

building a Safer Lambeth **Annual Report 2005/06**



SaferLambeth



Contents

Building a Safer Lambeth	5
Drug and alcohol availability	6
Drug and alcohol treatment	9
Violent crime	10
Young people and drugs	13
Young people and crime	14
Victims and witnesses	17
Priority crime	18
Improving your quality of life	21
Stronger communities	22
Street population	25
Crime statistics 2005/06	26
Useful contacts	28
Lambeth Safer Neighbourhoods Teams	29
Lambeth Community Safety (CST) Funding	30





Building a safer Lambeth

The Safer Lambeth Partnership is made up of a range of organisations working together to make your borough safer.

During 2005-06 we have developed a greater sense of our shared priorities and enter 2007 with an even more ambitious work programme.

Some of our key successes 2005-06 have been

- **Cracking** down on street drug dealing
- **Reducing** levels of street crime, residential robbery and vehicle crime
- **Increasing** the number of people accessing drug and alcohol treatment
- **Providing** support for victims and witnesses of crime
- **Safer** and cleaner streets

These projects have helped to reduce crime in Lambeth and improve your quality of life. This document will give you an idea of some of the other projects we have successfully been involved in.

Members of the Safer Lambeth Partnership include:

- Lambeth Council
- Fire Service
- Probation Service
- Primary Care Trust
- Metropolitan Police
- HM Prison Service
- Community Police Consultative Group
- Crown Prosecution Service

and a range of voluntary and community organisations

Our Priorities 2005-08

Based on what you told us in the Community Safety Audit 2004 of crime and fear of crime in Lambeth we are focusing on

- **Combating** the impact of drugs and alcohol
- **Reducing** violent crime
- **Investing** in young people
- **Supporting** victims and witnesses and challenging hate crime
- **Tackling** burglary, robbery, anti-social behaviour, drug dealing and prostitution
- **Keeping** you informed



Drug and alcohol availability

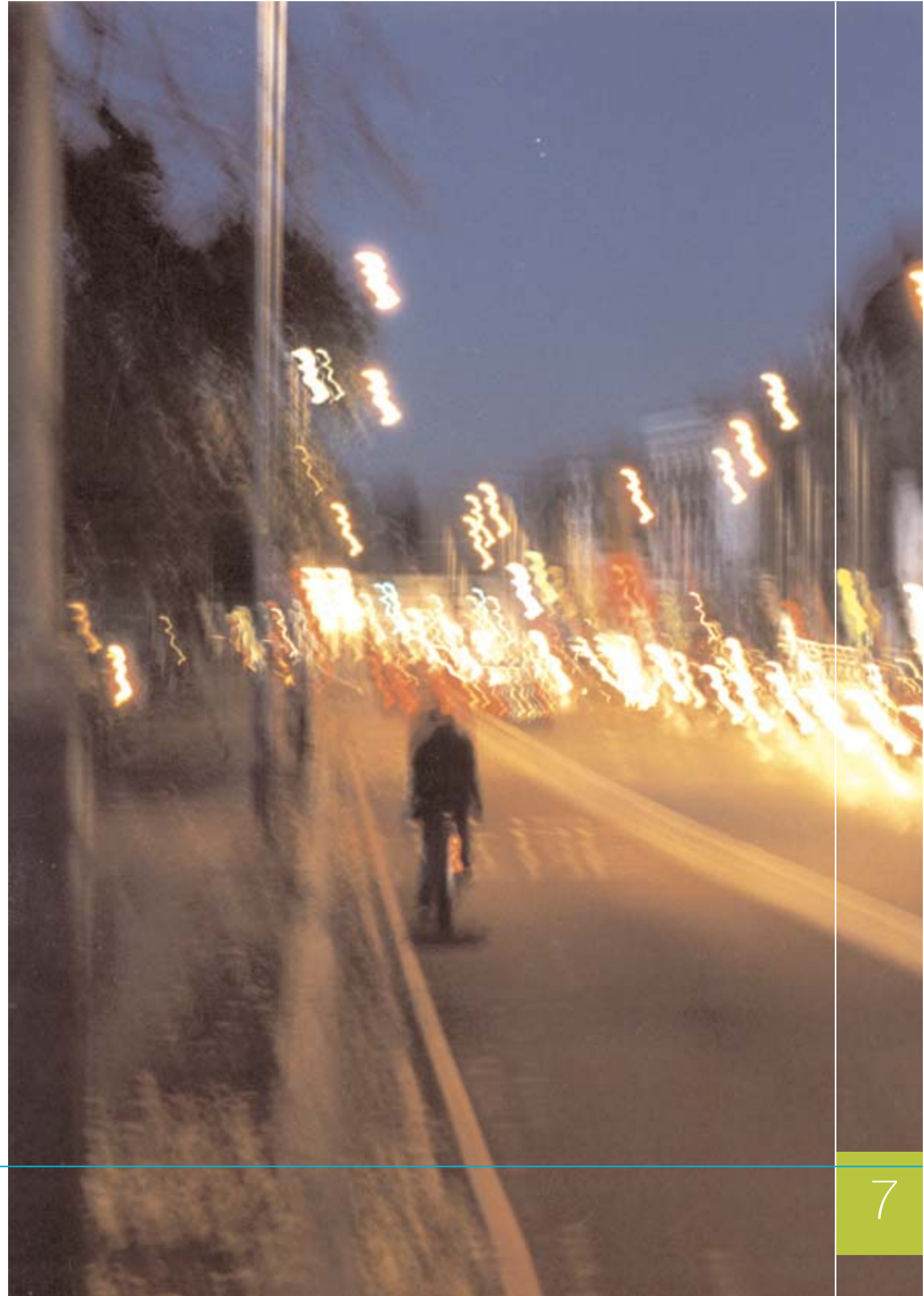
Reducing the availability of drugs in Lambeth is a key priority of the Safer Lambeth Partnership.

Through close partnership working we have increased the number of people found supplying or in possession of class A drugs with the intent to supply by 10% when comparing 2005-06 to 2004-05.



Key successes in 2005-06 include:

- **Exceeding** our target for increasing the number of crack houses in Lambeth being successfully closed
- **Cracking** down on street drug dealers through Operation Crackdown and Communities Against Drugs
- **Introducing** 'No Deal' for a three-month period in response to residents' concerns about drug dealing and associated anti-social behaviour and intimidation in Brixton town centre. The pilot was later extended to six months. Under the initiative, those found dealing drugs faced arrest and charge. People coming into the area to buy drugs (even a small amount of cannabis) also risked being arrested
- **Visiting** 212 shops, from small independent off licences to large supermarket chains, for selling alcohol to people under 18. Forty three of these were given Final Penalty Notices for age-restricted sales of alcohol





Drug and alcohol treatment

In 2005-06 the Safer Lambeth Partnership invested over £13m in drug treatment and met all of the waiting time targets for drug treatment set by the National Treatment Agency (NTA).

In Lambeth we have high levels of people using crack and cannabis. 2005-2006 saw significant improvements in attracting these users into treatment, particularly those from black ethnic minority communities. Management of the street population, particularly women involved in street based prostitution, through the development of treatment interventions, remains a high priority.

Drugs can not only have a serious impact on an individual's life but can also affect the quality of life for others in the community through drug-related crime and anti-social behaviour. Evidence shows that treatment works, is cost-effective and can break the link between drug misuse and crime. It is estimated that for every £1 spent on treatment at least £9.50 is saved in crime and health costs.

Key successes in 2005-06 include:

- **Developing** a drug and alcohol training programme to improve the skills and knowledge within all partner and support agencies
- **Providing** access to treatment services for people whose drug use leads them into criminal behaviour. During 2005/06 a total of 696 opiate and/or cocaine users who had been charged with criminal behaviour accessed drug treatment'
- **Making** 1968 drug treatment places available, overachieving our target in this area



St. Mungos Outreach team

Violent crime

During 2005-06 violent crime in Lambeth fell by 6.5% against a rise in violent crime nationally.

Despite this reduction we are aware that violent crime remains a serious concern for the whole community and will continue to prioritise issues such as alcohol related violence, sexual assaults, gang related violence and drug related violence.

We also take seriously our responsibility towards supporting victims and witnesses and will continue to build on the services we have available within the borough.



Key successes in 2005-06 include:

- **Working** with young people through the Gang Intervention Programme to deter potential young offenders from getting involved in gang and gun-related crimes and to reduce the rate of re-offending for known offenders. The project has been succeeded by the Gun Intervention Programme
- **Developing** a responsible licensee scheme, which trains licensees to reduce alcohol-related crime and antisocial behaviour in, and around, their premises
- **Tackling** domestic violence through Lambeth Domestic Violence Forum and ensuring that all Lambeth police officers receive full domestic violence training. Domestic violence detection rates increased to 71.5% during this period
- **Establishing** the Gaia Centre to provide women affected by domestic violence, information and support
- **Producing** a domestic violence strategy for Lambeth to coordinate the role of statutory and voluntary agencies in reducing the incidence of domestic violence in Lambeth and making people affected by it safer





Young people and drugs

The Safer Lambeth Partnership is working with a number of organisations to provide drug and alcohol services for young people and their parents or carers.

Our services deliver programmes that educate young people about the risks of drug and alcohol use, identify and support around vulnerable young people about their own or a family member's drug use, and where appropriate offer specialist treatment.

We aim to prevent young people from becoming the problematic drug users of tomorrow. In 2005-06 we exceeded our locally agreed targets by providing support and information to more than 6,000 young people, and by providing specialist treatment to 117 young people.

Key successes in 2005-06 include:

- **Delivering** universal education programmes for all children and young people, their parents and carers
- **Achieving** the drugs component of the National Healthy Schools Standard (NHSS) in 90% of secondary schools and 58% of primary schools. This ensures that these schools have appropriate policies and resources for delivering drug and alcohol education
- **Developing** drug and alcohol use guidance for all professionals involved in the care of children looked after by the Council. This guidance will help in identifying the early signs of substance misuse in young people in care and ensure that they get information and support
- **Introducing** specialist drug and alcohol treatment services for lesbian, gay, bisexual and young people
- **Offering** secondary schools an alternative to drug-related exclusions with "On-It", a school-based drug and alcohol support and information service
- **Producing** 'Lambeth drug file', an information pack developed with young people, on the effects of drugs and alcohol



Young people and crime

Young people in Lambeth are disproportionately represented as both victims and perpetrators of crime.

Evidence shows that investment in improving educational achievement, providing support for those at most risk and out of school hours activities for young people can reduce the number of young people involved in crime.

During 2005-06 the Safer Lambeth Partnership has delivered a range of activities aimed at diverting the most vulnerable young people away from offending, reoffending and problematic drug use or other negative behaviour into positive activities that will enhance their personal and educational development.

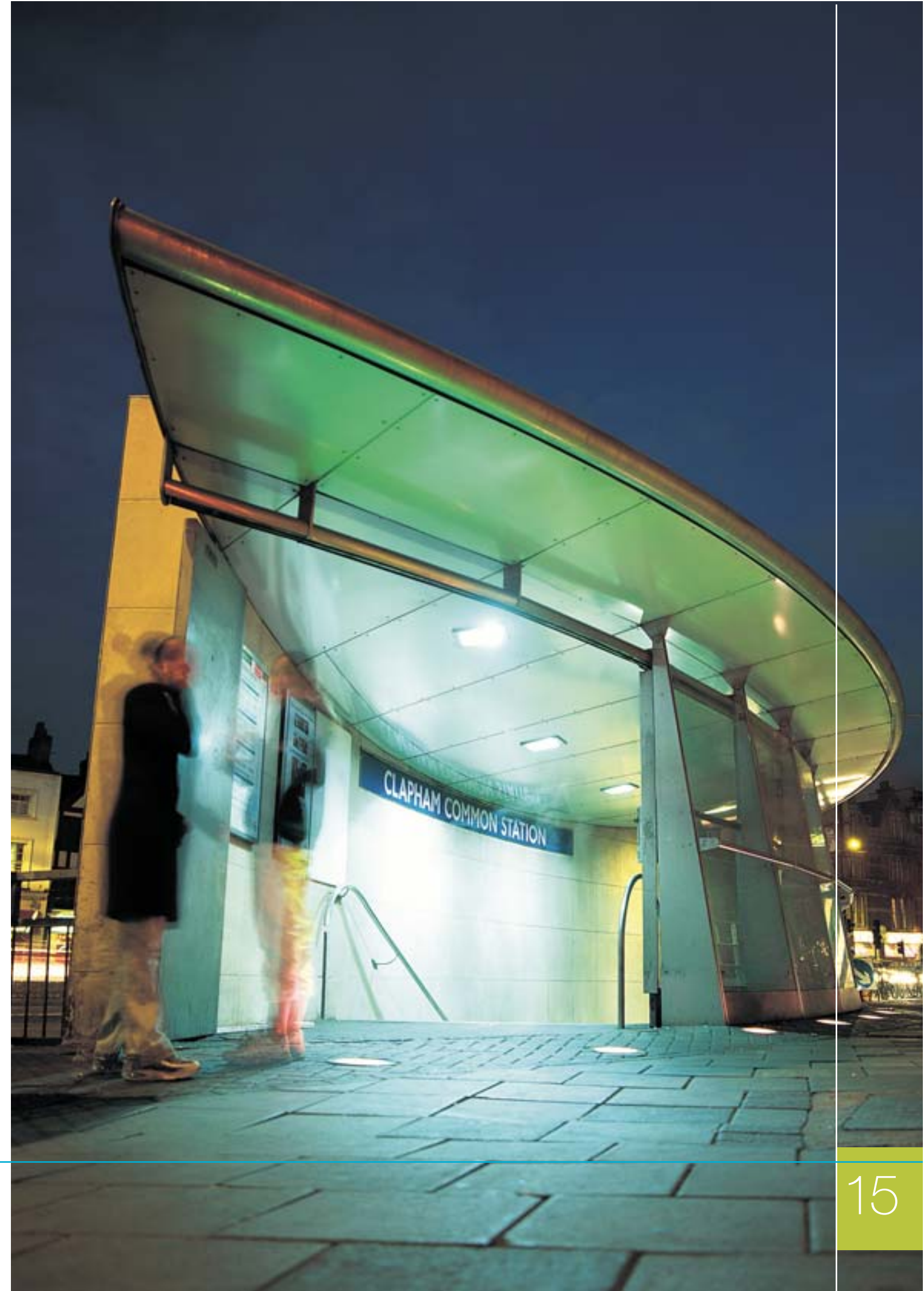


Young people attending the LIFE course at Clapham Fire Station in January 2006



Key Successes in 2005-06 include:

- **Ensuring** through the work of the Youth Offending Service (YOS), that all young people receive an intervention from the YOS when arrested for the second time, that all young people are in suitable accommodation and 90% of young people are in suitable education, training or employment when they leave the criminal justice system. They also ensured all victims who received support were satisfied with the support
- **Creating** a Holidays Activities Partnership to coordinate holiday activities throughout the borough
- **Running** the Local Fire Intervention Education programme to allow a number of young people who had offended, or who were considered to be at risk of offending or anti-social behaviour, to attend a five-day intensive fire safety and fire fighting course at Clapham Fire station. The scheme aimed to tackle persistent offending by developing the self-confidence and team-working skills of the participants
- **Supporting** Portuguese young people through the Mosaic project and also through the work of the Lambeth Crime Prevention Trust, who aim to increase young people's self confidence and life skills through a range of projects
- **Engaging** young people through the Safer Schools and Youth Partnership with a number of initiatives including school based lessons on street crime, domestic violence and weapons





Victims and witnesses

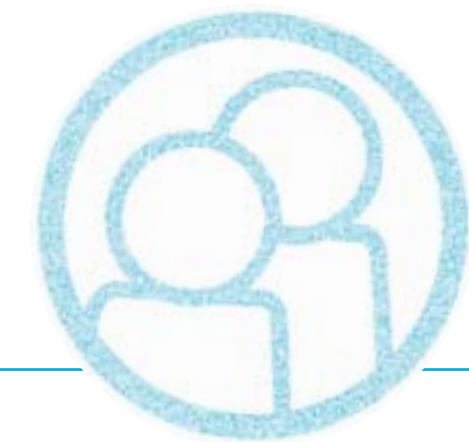
Preventing and reducing crime are top priorities for the Safer Lambeth Partnership.

We take seriously our responsibility to support anyone who has been affected. Making sure victims and witnesses are placed at the heart of the criminal justice system is both a national and local priority. To assist the Partnership achieve that, an Audit of provision was commissioned which mapped out the services available to victims and witnesses; consulted both young people and adults on their experiences of being a victim and the types of support they wanted; and benchmarked current criminal justice services against the high standards set out in the national Victims Code of Practice and also the proposed Witness Chart.

Key successes in 2005-06 include:

- **Funding** counselling for adults through Victim Support who have been traumatised as a result of being victim of crime
- **Making** sure support and counselling is available for children and young people through Victim Support and working closely with their families or carers. The service is also offered to children and young people through schools
- **Increasing** the amount of support and information available to members of the public faced with the prospect of attending court as a witness through the creation of Lambeth Witness Care Unit

- **Launching** a high profile anti-hate crime awareness campaign to remind people that hate crime is illegal
- **Helping** to make sure that Lesbian, Gay, Bisexual, Transgender people who live, work, study or socialise in the Vauxhall area can do so safely through close working between Lambeth Police LGBT Liaison Team, Vauxhall Gay Business Forum (VGBF) and the local residents Lambeth LGBT Forum
- **Appointing** a race and faith hate crime coordinator to tackle hate crime in Lambeth



Priority crime

Through tactical street operations and the wide distribution of targeted personal safety and crime reduction information, 2005/06 saw significant reductions in street crime, residential robbery and vehicle crime.



Key successes in 2005-06 include:

- **Increasing** awareness among older people around home security and bogus callers through community safety events for the older people across the borough
- **Offering** Smartwater property marking and free home crime prevention surveys to vulnerable homes in North Lambeth in known burglary 'hot spot' areas
- **Enhancing** security in sheltered accommodation and vulnerable housing for older people with the distribution of 700 Viewcom spyholes, which are battery powered devices which allow a resident to see and hear a caller before opening the door
- **Promoting** a free Handy Van home security scheme to people over 60 throughout the borough
- **Targeting** mobile phone theft through regular high profile leafleting and poster campaigns in hot spot areas, mobile phone marking schemes and the introduction of robust guidelines and a positive prosecution policy for false reporting
- **Piloting** the Community Payback scheme in Streatham saw low level, local offenders come back into their communities to work supervised on manual projects such as painting buildings and clearing pieces of land





Improving your quality of life

Working together the Safer Lambeth Partnership has helped to make all aspects of our streets safer and cleaner.

We have delivered a wide range of services to residential and commercial customers to improve the borough's environment, making it a more pleasant place for people to live, work and visit. The impact of the Safer Lambeth Partnership's work in Lambeth is underlined by the crime figures for 2005-06, which showed a 5.7% fall in personal robbery, an 8.9% fall in residential burglary and a 17.4% fall in the theft of motor vehicles.

Key successes in 2005-06 include:

- **Increasing** the visibility of policing in Lambeth through the creation of Safer Neighbourhoods teams in eight of our wards. The teams tackle issues of concern to you in your neighbourhood such as anti-social behaviour, graffiti, noisy neighbourhoods and vandalism. By January 2007 we are due to have fully staffed teams in each of the borough's 21 wards
- **Making** all aspects of our streets safer. Lambeth Council's 38-strong team of community wardens have been acting as the eyes and ears of the community, helping police to deter crime and reduce low-level street offences such as anti-social behaviour. They have also been involved in community projects including local football matches with young people.
- **Reorganising** Brixton market to make it a safer place to trade and shop. In September 2005, a 6-month trial saw the north side's pitches removed and casual traders relocated to other areas of the market to tackle congestion and overcrowding. A survey afterwards found majority support for the

changes from market traders, with the majority of shoppers also feeling safer

- **Enhancing** the environment with Lambeth Clean Up Week in March 2006. Key activities included Lambeth wardens and Streetcare staff engaging local schools in educational activities about graffiti and gum removal, while more than 1,500 free Stubbi pouches were handed out to smokers and people chewing gum so that they could dispose of their litter conveniently
- **Launching** a £17.2m, 25-year Lighting Private Finance Initiative. Over the next four years they will replace 80% of the borough's existing streetlights, while more than 4,000 new lights will be installed in areas where residents are particularly concerned about crime
- **Investing** in Pulross Playground has led to a fall in vandalism and complaints from members of the public and an increase in youth club attendance
- **Improving** the safety of Lambeth's roads, with a 27% improvement in their condition. The last year has also seen increased vigilance on all our roads, with the Police, DVLA, and the Council's Streetcare department working together to check drivers' tax, insurance and ownership status'
- **Removing** abandoned vehicles quickly and efficiently, despite a much higher volume of reports. Almost all of reported abandoned vehicles are investigated within 24 hours of a complaint, while the follow-through on removing the vehicle remains high for the year

Stronger communities

Throughout 2005-06, we've been working with a wide range of agencies to improve community cohesion by engaging with a wide range of communities, delivering community-based services and helping community-based organisations to grow.

A key achievement has been the work done to increase the uptake of drug and alcohol treatment services by underserved and underrepresented groups within the borough.

Key successes in 2005-06 include:

- **Improving** relations between the Somali community, local police, residents and business owners in Streatham with the Somali Volunteer Project. Somali volunteers currently patrol Gleneagles Road and the surrounding area with Lambeth Council wardens and the local Safer Neighbourhoods Team, enhancing community cohesion and building trust after concern about negative stereotyping of the Somali community in the area

- **Providing** community training with the Lambeth Drug and Alcohol Team (DAT) on drug and alcohol use for Muslim and East African communities in Stockwell, working with East African Health Concern and Stockwell Green Community Services
- **Offering** support around drug and alcohol use to the Lesbian, Gay, Bisexual and Transgender (LGBT) communities working with the Terence Higgins Trust. The programme of drug awareness training and outreach has improved relations with the Borough's Police LGBT liaison team and reduced the numbers of drug related hospitalisation from LGBT venues
- **Creating** a specialist service for Lambeth for the drug Khat
- **Increasing** community cohesion and awareness of drug and alcohol use and community safety issues among Vassal ward residents and Muslim and East African communities in Stockwell including Muslim and East African groups
- **Delivering** more than 200 drug and alcohol awareness training sessions to community representatives and organisations
- **Supporting** Lambeth United, an umbrella grouping comprised of faith group leaders, active community members, businesses, politicians and senior Council and Police staff. The group came together after the terrorist attacks in London in July 2005 and has continued to meet regularly and discuss issues of concern





Street population

In 2005-06 we exceeded central government targets for reducing the number of people sleeping rough in Lambeth.

In Lambeth we recognise that rough sleepers and 'street users' are some of the most disadvantaged and socially excluded members of our community, and we strive to offer structured routes to guide people away from the streets through contact with support and treatment agencies. As well as a need for secure housing, many of those sleeping rough, or at risk of sleeping rough due to their street-based lifestyle (in particular street drinkers and street-based sex workers), have additional needs around drug and alcohol use, chaotic lifestyles and physical and mental ill-health.

The Safer Lambeth Partnership also recognises that while we have a responsibility to vulnerable people, their activities can have negative effects for other members of our community. That's why we address issues in a holistic way, creating partnerships that provide support and care, but which also recognise that environmental improvements and enforcement also play a role.'

Key successes in 2005-06 include:

- **Expanding** our rough sleepers outreach services to make sure we can better meet the needs of vulnerable street based groups
- **Working** closely with the Supporting People Team to complete reviews of rough sleepers hostels to make sure that the services they provide are of a high quality and represent value for money

- **Piloting** a third party reporting system in the north of the borough following the murder of David Morley and the discovery of similar assaults made against rough sleepers
- **Creating** an alternative space for street drinkers in Brockwell Park. The space has improved the park environment for users of the park's Herne Hill gate and has allowed treatment services to access this group of vulnerable adults. The project led to a number of street drinkers getting treatment or other support services and a sharp decrease in complaints to the police
- **Establishing** multi-agency panels in each town centre in Lambeth. Each panel works to make sure that there is appropriate access to housing, care and treatment and addresses persistent anti social behaviour through design and enforcement'



St Mungos Outreach team



Crime Statistics 2005/06

In the financial year 2005-06, compared to the previous year, Lambeth exceeded the 2% reduction target and achieved a 5.6% reduction for the Public Service Agreement (PSA1) crimes outlined in the table below.

In 2005-06 compared to 2004-05:

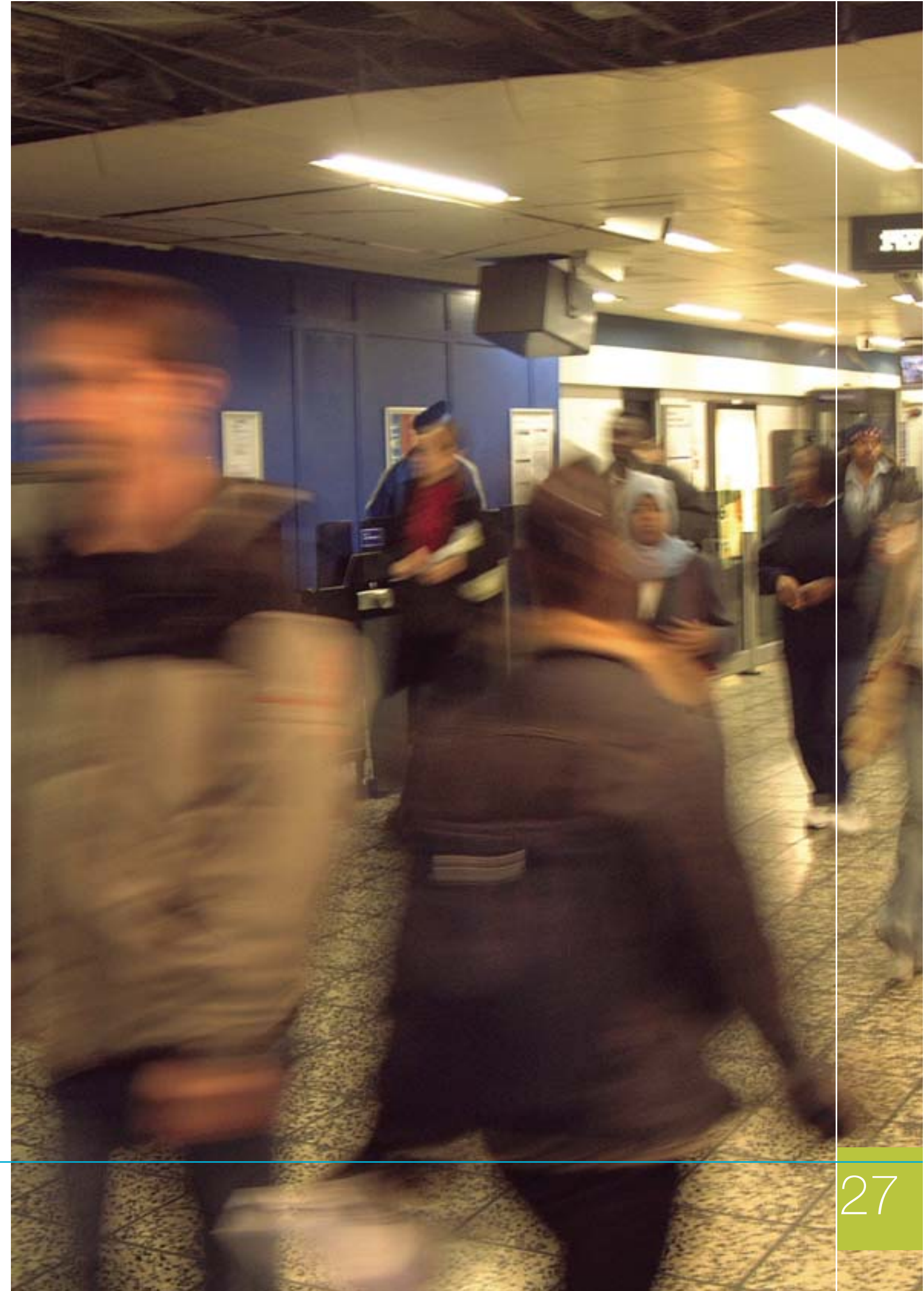
- Theft of Motor Vehicle was reduced by 17%
- Burglary in a dwelling was reduced by nearly 9%
- Theft/Taking of pedal cycles saw an increase in the borough by a quarter
- Criminal Damage was reduced by nearly 13%
- Wounding & Common assault combined decreased by nearly 5% (See caveat below).
- Pick pocketing saw an increase of 4%

The combined PSA1 target for FY2006-07 is to reduce PSA1 crimes by a further 2.4% compared to the previous year.

PSA1 performance and targets

	FY2003/04 (baseline year)	FY 2004/05	FY 2005/06	% change from 04/05 to 05/06	Reduction target for 06/07
Data type	Actual performance	Actual performance	Actual performance	% change	% target
Theft of Motor Vehicle (M/V)	2152	1651	1368	-17.1%	0%
Theft from M/V	4005	3349	3250	-3.0%	10%
M/V Interface and tampering	45	50	79	58.0%	63%
Burglary in a dwelling	3692	3105	2834	-8.7%	0%
Theft taking of pedal cycles	943	952	1196	25.6%	4%
British Crime Survey (BCS) Criminal damage	5878	5426	4730	-12.8%	0%
BCS wounding (ABH, GBH, & other)	3023	3182	4077	28.1%	4%
BCS common assault	3863	3676	2456	-33.2%	0%
BCS wounding and common assault*	6886	6858	6533	-4.7%	3%
Theft person – common assault	1402	1221	1271	4.1%	0%
Theft person - common assault	1541	1282	1289	0.5%	0%
Robbery of personal property	3146	2922	2759	-5.6%	0%
Total	29690	26816	25309	-5.6%	2.4%

*During FY 2005-06 there was a change in the level of injury to support a report of ABH/GBH as opposed to common assault. This immediately meant that all boroughs saw an decrease in Common Assault and an increase in Wounding. Both individual targets were, therefore, rendered meaningless. Lambeth then adopted a joint BCS Wounding and Common Assault target which the performance and target above is highlighted in grey.



Useful contacts

Lambeth Council

Main switchboard
020 7926 1000
www.lambeth.gov.uk

Lambeth Police

999 (emergencies)
020 7326 1212 (non emergencies)

Fire

999 (emergencies)
020 7582 3811

Ambulance

999 (emergencies)
020 7887 6678

Lambeth Council Community Safety Division

020 7926 2733
www.lambeth.gov.uk

Lambeth Crime Prevention Trust

(for information on race and faith or LGBT hate crime)
020 7326 2689/93

Lambeth Drug and Alcohol Team

020 7926 2701
www.lambeth.gov.uk/DAAT

Lambeth Primary Care Trust (PCT)

www.lambethpct.nhs.uk

Abandoned vehicles

020 7926 9000

Defective street lighting

020 7926 9000 or register online at
www.lambeth.gov.uk/services/transportstreets/streetcarecleaning

Noise Control Service

Night-time telephone hotline:
020 7926 5999
(10pm-3am Sunday-Thursday and
10pm-5am Friday and Saturday)
Day-time telephone:
020 7926 6111 (9am-5pm)

Rapid Response Team

(for sex and drug related rubbish)
020 7926 8888

Grimebusters

(to remove graffiti or flyposting)
020 8761 9238

Crimestoppers

0800 555 111
www.crimestoppers-uk.org

Domestic Violence

020 7926 2882

Help the Aged Handy Van Scheme

01255 473999

Housing

020 7926 6000

Homelessness

020 7926 5555

Benefits

(Housing benefit and Council Tax benefits)
020 7649 9311

Council Tax information

020 7649 9311

Childline

0800 1111
www.childline.org.uk

Citizens Advice Bureau

020 8715 0707

St Thomas' Hospital

020 7928 9292

Guy's Hospital

020 7955 5000

Kings College Hospital

020 7737 4000

Victim Support

020 7820 0007/8

Gaia Centre

(domestic violence)
020 7733 8724

National Domestic Violence Helpline

(run in partnership by
Refuge and Women's Aid)
0808 2000 247

Lambeth safer neighbourhoods teams

Ward	Safer Neighbourhood Location	Contact Number	Mobile Number
Bishops	Kennington Police Station	020 8721 2731	07766 990 790
Brixton Hill	Cavendish Rd Police Station	020 8721 2892	07881 510 272
Clapham Common	Cavendish Rd Police Station	020 8721 2623	07920 233 839
Clapham Town	Clapham Police Station	020 8649 2522	07881 516 977
Coldharbour	236 Coldharbour Lane	020 8649 2008	07843 065 917
Ferndale	Brixton Police Station	020 8721 2774	07766 990 785
Gipsy Hill	Gipsy Hill Police Station	020 8721 2617	07920 233 845
Herne Hill	236 Coldharbour Lane	020 8649 2007	07881 511 386
Knights Hill	Gipsy Hill Police Station	020 8721 2618	07920 233 844
Larkhall	Clapham Police Station	020 8649 2522	07920 233 837
Oval	Frank O'Neill House	020 8721 2761	07747 790 001
Princes	Kennington Police Station	020 8721 2627	07920 233 835
St Leonard's	Streatham Police Station	020 8721 2621	07920 233 841
Stockwell	Clapham Police Station	020 8649 2533	07920 233 836
Streatham Hill	Streatham Police Station	020 8721 2620	07920 233 842
Streatham South	Streatham Police Station	020 8721 2628	07920 233 834
Streatham Wells	Streatham Police Station	020 8721 2823	07881 502 464
Thornton	Cavendish Road Police Station	020 8721 2622	07920 233 840
Thurlow Park	Gipsy Hill Police Station	020 8721 2619	07920 233 843
Tulse Hill	Brixton Police Station	020 8721 2624	07920 233 838
Vassall	Frank O'Neill House	020 8721 3661	07843 065 918

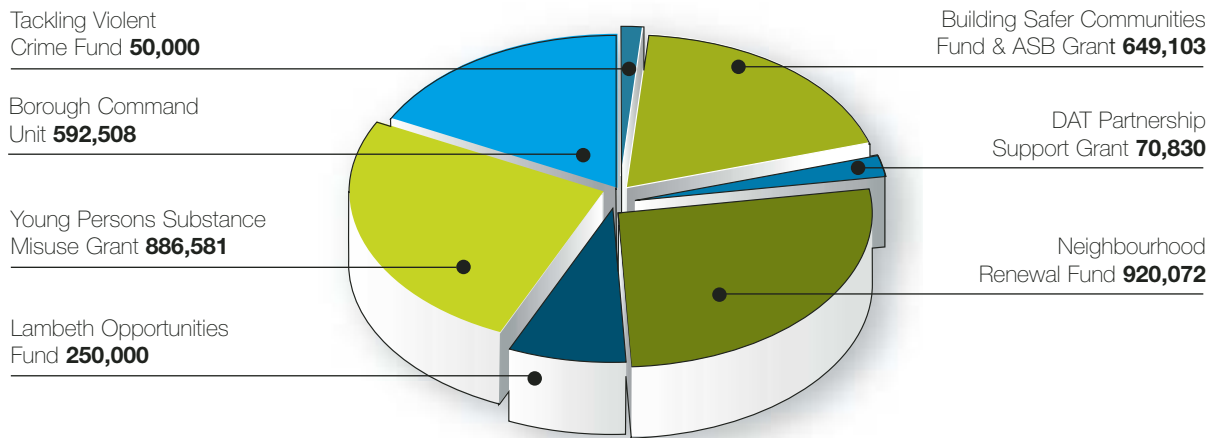


Lambeth community safety division (CST) funding

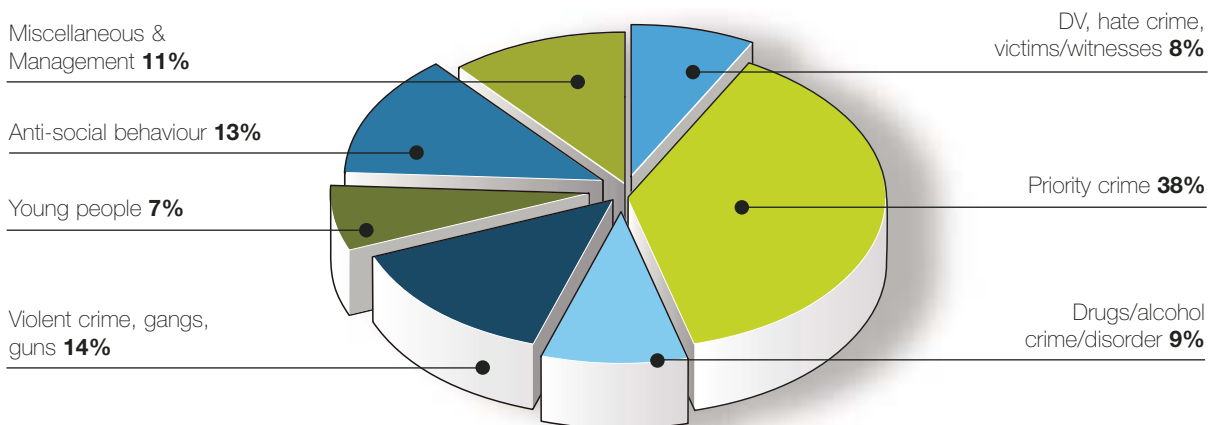
1 April 2005 - 31 March 2006

Core Funding	Revenue Allocation	Capital Allocation	Total Allocation
All Core Funding	£659,619	0	£659,619
Core Funding Total	£659,619	0	£659,619
Funding Stream held within CST	Revenue Allocation	Capital Allocation	Total Allocation
Building Safer Communities Fund & ASB Grant	£480,595	£168,508	£649,103
DAT Partnership Support Grant	£70,830	0	£70,830
Neighbourhood Renewal Fund	£920,072	0	£920,072
Lambeth Opportunities Fund	0	£250,000	£250,000
Young Persons Substance Misuse Grant	£886,581	0	£886,581
Tackling Violent Crime Fund	£50,000	0	£50,000
Total Grants Allocation	£2,408,078	£418,508	£2,826,586

Total Grant Funding held within community safety in 2005/06



Lambeth's use of Government crime funds 2005/06



The above chart focuses on crime funds and excludes a further £800k for Young People and Substance Misuse Prevention; £6m for drug and alcohol treatment for adults; and £1m for programmes to work with substance-using offenders.'





If you would like this information in large print, in Braille, on audio tape or in another language, please phone **020 7649 9311**

Spanish

Si desea esta información en otro idioma, rogamos nos llame al **020 7649 9311**

Portuguese

Se desejar esta informação noutro idioma é favor telefonar para **020 7649 9311**

French

Si vous souhaitez ces informations dans une autre langue veuillez nous contacter au **020 7649 9311**

Bengali

এই তথ্য অন্য কোনো ভাষায় আপনার প্রয়োজন হলে অনুগ্রহ করে ফোন করুন **020 7649 9311**

Twi

Se wope saa nkaeboy yi wo kasa foforo mu a fre **020 7649 9311**

Yoruba

Tí ẹ ba ẹ ìmoràn yìí, ní èdè Òmíràn, ẹjǫ, ẹ kàn wà l'ágogo **020 7649 9311**