

Lambethtalk

PEOPLE • PLACES • EVENTS • DATES • CONTACTS • FEATURES

SPRING 2021

FREE TO YOUR DOOR



Illustration produced by Dr Pen Mendonca @MendoncaPen www.panmendonca.com at the Lambeth Youth Council event to discuss actions against climate change, 11 June 2020.

ADVERTISEMENT



The census is here

By taking part, you will help inform decisions about the things that matter to you and your community.

If you need help to fill in your census form, we've got it covered.

Visit www.census.gov.uk to find out more.

it's about us census 2021

Welcome



Dear Resident,

I am delighted to be able to introduce this Spring edition of Lambeth Talk. After a very difficult few months spring is bringing a brighter outlook as we start to ease out of lockdown with schools opening from the 8th March and the welcome roll out of the vaccine. Nearly 60,000 residents have already had their vaccine which is really encouraging. This edition of Lambeth Talk contains lots more information on the activity across the borough to support residents.

I would like to take this opportunity to thank all of our residents for their individual contributions to keeping Lambeth safe over the last year. Whether this is through being a key worker, home schooling, volunteering, having your vaccination or just staying home, all these things add up to helping us keep Lambeth safe.

Ruth Hutt, Director of Public Health

For the latest information go to
lambeth.gov.uk/coronavirus

For translation of articles in any other language, large print format,
or to opt-out from receiving the magazine contact:
lambethtalk@lambeth.gov.uk

Shopping service for vulnerable residents



Are you vulnerable or self-isolating? Let us do the shopping for you.

Call the MYcommunity Gateway service on 0333 360 3700 or email
mycommunity@ageuklambeth.org Open Monday-Friday, 9am-5pm

NEWS



Saturday 17 and Sunday 18 July 2021

#LCS20 #VirtualLCS

www.lambethcountryshow.co.uk



Virtual Country Show

This year the Lambeth Country show will be run as a virtual event due to the ongoing impact of the Covid-19 pandemic, and uncertainty remaining about when the social distancing and other restrictions needed to stop the spread of the virus will be lifted.

The free Lambeth Country Show is put on annually by Lambeth Council to celebrate the best of both the city and the countryside. It has attracted crowds of more than 120,000 to Brockwell Park in Herne Hill over the weekend in previous years.

Last year's event had to be cancelled at short notice due to the start of the Covid-19 pandemic. But this year's show will go ahead online after months of planning. Exhibitors and performers are set to be invited to contact the organising team in the coming months about taking part.

Trustees wanted

The Southside Rehabilitation Association is recruiting eight trustees to join the board of the specialist mental health charity.

SRA is based in Lambeth and Southwark and works with people suffering serious mental health problems and assisting them in their recovery.

Trustee duties include supporting the CEO, developing and implementing a business plan and overseeing the annual budget.

The roles do not require specific qualifications but experience including the charity governance, charity law, social media marketing and fundraising is desirable.

Get in touch with Stephanie Correia, stephanie@sra.ltd.co.uk
Tel 020 8766 6688.

Plans for Brixton

Ambitious plans to redevelop two key Brixton town centre sites could lead to hundreds of high-quality homes and new, permanent workspace to support businesses in the borough.

The council is launching a selection process to find a delivery partner to work with both the council and the local community on proposals for the sites at 49 Brixton Station Road, which houses several temporary uses including Pop Brixton, and 6 Canterbury Crescent – currently International House.

Under the proposals, both workspace and housing are prioritised. It is expected that around 240 homes could be

delivered across the sites, meaning around 120 new affordable homes could be built, 70% of which would be prioritised for local residents at council rents and benefit people on the council's housing waiting list.

The council hopes to select a delivery partner by March 2022. Construction on the council-owned land could begin in 2024. For more information on the Growing Brixton's Rec Quarter project, visit lambeth.gov.uk



Budget 2021-22

Lambeth Council's Cabinet has agreed a 2021-22 budget that will maintain front line services and help address funding gaps caused by the unprecedented demands of tackling the coronavirus over the past year.

The Budget report outlines the financial impact of fighting the pandemic. Lambeth Council continues to deal with funding pressures in essential services such as social care and homelessness.

As a result, Lambeth has expanded its welfare safety net – including additional funds for the emergency

support scheme and discretionary housing payments, as well as funding for local advice surgeries – for people in financial difficulty to help them deal with rising costs.

To ensure that the most vulnerable are not impacted by the council tax rise, the council will also increase the scope and funding for its Council Tax Support scheme,

removing 7,000 households from paying council tax.

The budget also proposes a new Foster Carer Council Tax allowance, to support Lambeth's foster carers for the incredibly important work that they do, and to encourage more residents within the borough to become carers.



New electoral wards

The Local Government Boundary Commission for England published its proposals for new Lambeth electoral wards recently, following initial consultation in 2020. For more information visit:

<https://beta.lambeth.gov.uk/voting-elections>

Residents and community groups/VCS organisations and others can comment on the proposed scheme by **12 April 2021**.

Recommendations will be published on 29 June 2021. If they're approved by Parliament, the new electoral ward boundaries will be introduced in time for Lambeth's full council elections in May 2022.

Let us know what you think by emailing engagement@lambeth.gov.uk

Learning through practice



Nine new apprentices have been recruited by Homes for Lambeth as part of its investment plans in the borough.

The apprenticeship opportunities – which have predominantly been taken up by young Black, Asian and Minority Ethnic residents – are examples of HFL's commitment to creating better futures for Lambeth residents.

Jitinder Takhar, Chief Executive of Homes for Lambeth, said: "Over the next 18 months, they will learn and develop their understanding of different aspects of the business and make a significant contribution to their communities as well as to the HFL business."

When do you need to self-isolate?

If any of the following applies

- ▶ have symptoms of Covid-19 and are waiting for a test
- ▶ have tested positive for Covid-19
- ▶ are part of the household of a suspected or confirmed Covid-19 case
- ▶ have been told or alerted through NHS Test and Trace service or App that you are a close contact of a Covid-19 case
- ▶ have been told to self-isolate because you're in close contact with a Covid-19 case
- ▶ have returned from a country that is on the quarantine list.

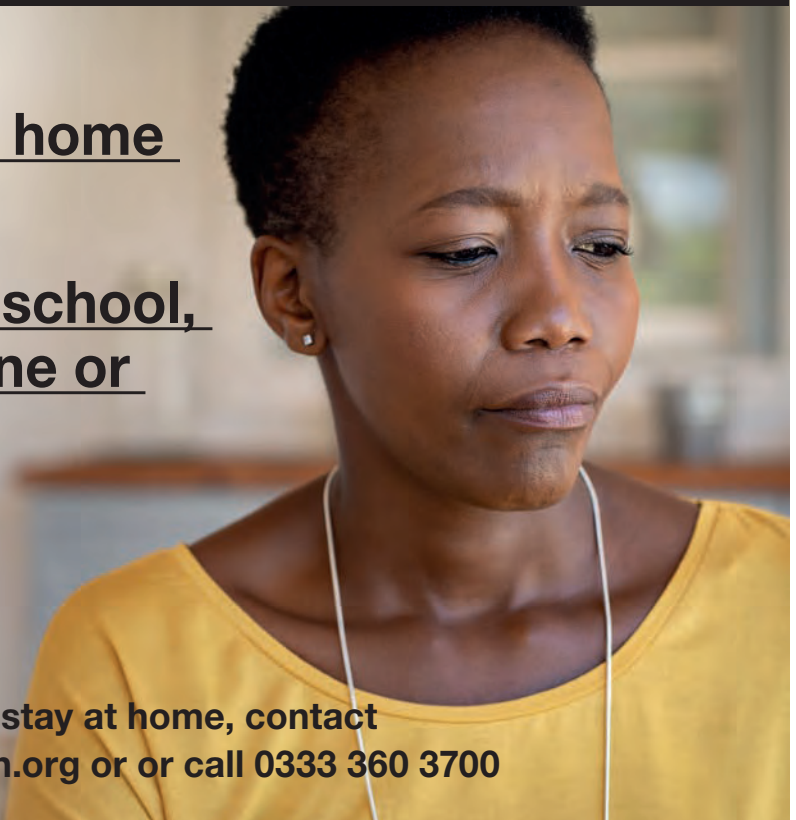
You must self-isolate

You must not leave home for any reason.

Do not go to work, school, shops or visit anyone or go anywhere.

If you need help to be able to stay at home, contact mycommunity@ageuklambeth.org or or call 0333 360 3700

Information on how to self-isolate can be found
<https://beta.lambeth.gov.uk/covid-19-self-isolation-posters>





Getting my Covid-19 vaccine



Richard, Co-chair of Lambeth Learning Disability Assembly

“ When I was invited for my vaccine, I didn't hesitate. The staff who support me in my flat helped to organise it and even if I was a bit worried, I still thought it was the best thing to get it done as soon as possible, so I can get protected. And once everyone has it, we can start getting on with our lives again.

My life really just came to a standstill with coronavirus. All there is to do now is just walk around near my flat. I miss getting out like I used to and meeting up with family and friends. My Mum lives in Essex and I haven't been able to see her since before Christmas. We keep in touch on WhatsApp but it's just not the same. I'm looking forward to

being able to meet her in town to go to the theatre and have a nice steak and chips afterwards when everything is open again. I also miss museums and going for my swim at West Norwood Leisure Centre.

I can understand some people are nervous about getting the vaccine, but when I went for mine, the doctor was so nice – she took me in and sat down with me and explained all about it. So if anyone isn't sure I would say 'think about what you enjoy in life and for that reason it's good to go and get your vaccine, it will help you and all of us get back to normal, as well as keep you and others safe'.”

People with learning disabilities are now eligible for the Covid-19 vaccine. For more including Easyread information and films, visit

<https://selondonccg.nhs.uk/what-we-do/covid-19/covid-19-vaccine/>

Domestic abuse support during lockdown

By Deputy Manager, Gaia Centre

The concerns around domestic abuse have been well publicised during Covid 19 lockdown. Gaia has stayed open to support survivors throughout this time. Rather than meet face to face with clients we are mostly supporting them by telephone, email and text. However, we still attend court hearings and police station appointments

with people where needed.

We've recruited an extra Independent Gender Violence Advocate (IGVA) and an Early Intervention keyworker for 12 months to offer survivors of gender based abuse essential support and safeguarding. Our priorities remain supporting those referred to us through holistic casework and safeguarding. The best part

of my job is to see people achieve safety and empower them to move forward with their lives free from fear of harm.

We are independent from other agencies, you can contact Gaia anonymously and in confidence.

You are not alone, and you will be believed.

ADVERTISEMENT

Are you scared of your partner, ex or family?

We can help.

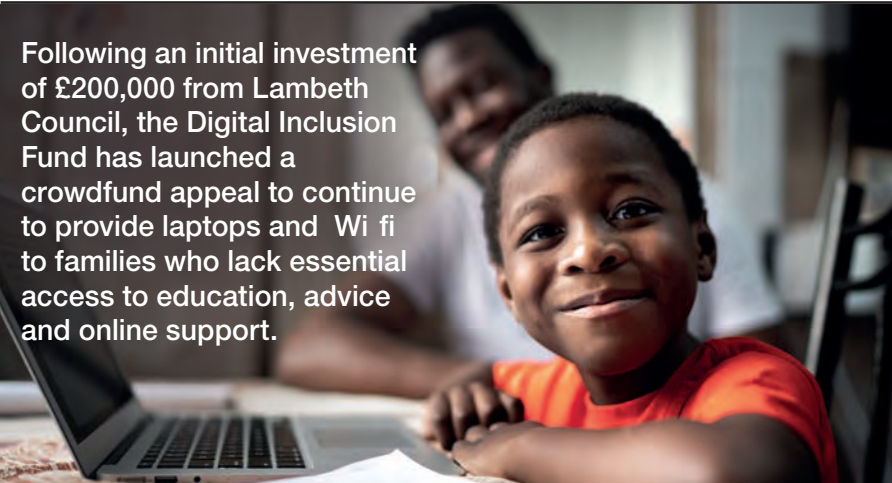
The Gaia Centre provides free and confidential support for Lambeth residents affected by abuse.

- Safety
- Housing
- Legal options
- Money
- Children

020 7733 8724

lambethvawg@refuge.org.uk
www.refuge.org.uk/gaia

the Gaia centre
Run by Refuge
Working in Lambeth
to end gender-based violence



Following an initial investment of £200,000 from Lambeth Council, the Digital Inclusion Fund has launched a crowdfund appeal to continue to provide laptops and Wi fi to families who lack essential access to education, advice and online support.

LAMBETH APPEAL: END THE DIGITAL DIVIDE

Donate to the appeal

The Lambeth Digital Inclusion Fund has launched a crowdfund appeal to provide laptops and Wi-fi to families who lack essential access to education, advice and online support. Impact of Urban Health have announced that they will be generously match funding donations which means that your donation can have double the impact. Please visit www.crowdfunder.co.uk/lambeth-digital-inclusion-fund to donate.

Donate devices

You can help combat digital poverty by donating laptops, tablets, and mobile phones to be securely erased and redistributed:

- Lambeth TechAid (all devices including laptops, tablets, desktops): <https://app.techaid.ju.ma/donate-device>

- Community Calling (smartphones): <https://www.hubbub.org.uk/communitycalling>

Get support

If you need support to get online please ask your local services or organisations that are supporting you. This might be a school, a keyworker, a social worker, a community group or a local charity. They will be able to advise you on the types of support that are available, including the possibility of helping you access a device. If you need more information, take a look or ask someone to look at www.lambeth.gov.uk/digitalaccessforall

Apply for funding

Applications for the fund will be made by schools and voluntary organisations. It will open in spring 2021.

“ This pandemic and lockdown has hit everyone hard in different ways. At Dwayne Simpson foundation Dwaynatics ABC we support young people and parents to stay connected and participate in activities around sport, education and employment. The lockdown meant that at several young people could not access the programmes we offer or take part in online learning because they had no electronical device. It was heartbreaking not being able to help them and several members suffered depression and stress with the isolation. The Digital Inclusion Fund was like a wind of hope. This will help a number of young people to keep going digitally and stay connected within a community that they love.”

Pastor Lorraine Jones
Previous grant recipient

“ It has been an extremely difficult time for all children in the last year and yet we emerge with stubborn optimism in our commitment to forging a path for equitable learning. The transformative power of technology means that having access to laptops or tablets allows schools to deliver an education that is more inclusive, personal, and effective, resulting in children having better outcomes.”

Bronia Grehan
Headteacher of Immanuel and St Andrew's Primary School

Greener homes

A government grant worth up to £10,000 could save money on your energy bills. Are you eligible?

Domestic emissions are the biggest contributor to Lambeth's carbon emissions.*

The Green Homes Grant scheme is an excellent way for the council to help residents improve the energy efficiency of their homes and reduce their monthly energy bills

The grant is available to residents whose total household income is less than £30,000 a year, including benefits, in homes with the lowest energy rating of E, F or G. Improvements could save the least efficient households up to £600 a

year on their energy bills.

Work could include new wall, floor, loft and roof insulation as well as the installation of low carbon heating systems, energy efficient doors and windows and improved heating control and hot water tanks.

The energy efficiency of eligible homes would be assessed by experts and works will be carried out by an experienced contractor in accordance with an agreed works plan. All improvement works are carried out by Trustmark

certified Everwarm engineers and will be completed in accordance with Covid-19 secure guidelines.

Successful applicants would not have to repay the money as it is backed by the Secretary of State for Business, Energy and Industrial Strategy. The scheme is being administered by Lambeth Council in partnership with six other London boroughs - Brent, Ealing, Hammersmith & Fulham, Harrow, Hounslow, and Kensington & Chelsea.

• To find out if you are eligible for the grant visit <https://london.greendoctors.org.uk> to complete a simple web form or call 0800 083 2265 from Monday to Friday, 9am—5.30pm).

• A voucher scheme is also available for homeowners and private landlords for energy improvement works valued up to £7,500. The homeowners and landlords would receive two thirds of the cost of the works from the government, up to £5,000, while contributing the remaining £2,500 themselves. Check your eligibility for the voucher scheme by visiting <https://www.simpleenergyadvice.org.uk>



*Source: Carbon baseline report 2018 19, published July 2020, lambeth.gov.uk

Why we are holding a citizens' assembly on tackling the climate crisis

The climate crisis is a problem that requires a collective response.

In January 2019 Lambeth Council became the first local authority in London, and one of the first in the country, to declare a climate emergency. We brought

forward our target for making the operations of the council carbon neutral to 2030.

The council has taken huge strides over the past couple of years, for example by switching to wholly renewable electricity, investing in the energy efficiency of council homes, and investing in walking and cycling infrastructure. While

the council can provide leadership by reducing its own emissions, we do not have the power or the solutions to significantly reduce carbon emissions across the borough as a whole alone. Every organisation and person in Lambeth has a part to play and that's where a citizens' assembly comes in.

Lambeth citizens' assembly

How will the Citizens' Assembly work and when will it meet?

We know that Lambeth is full of committed, knowledgeable, innovative and socially conscious residents that are committed to working together to prepare our borough for the future. That's why we are funding a citizens' assembly on climate change on behalf of the whole borough.

It will bring together Lambeth residents, randomly selected and fully representative of the

population, to review the evidence, consider initiatives to address the climate emergency, and recommend climate actions for every organisation and individual in the borough that can command broad support.

Whilst it is funded by the council, it is organised and facilitated by independent experts, and overseen by a Steering Group which includes representatives from key organisations across the borough such as Kings College London, London South Bank University, Guys and St Thomas'

NHS Trust, faith and community groups, business representatives and politicians from each political party represented on the council.

The council and Steering Group have agreed to hold the citizens' assembly online across the spring and summer of 2021. The recommendations will then be heard at a meeting of Full Council, where key organisations and sectors of civic society in Lambeth will take back and deliver the recommendations in their communities.

How you can get involved We know that many more people would like to contribute to the assembly, and we are developing plans for how to do this effectively. Keep an eye on our Climate Action Hub site at <https://lambethclimateaction.commonplace.is/> or sign up for the council's sustainability updates on our website.

Mina shares her story about how she found a childminder for her son Andy. By using the free two-year-old funding, she and her partner were both able to carry on their studies, knowing he was being well cared for.

“

Using a childminder has been a great experience for Andy and my family.”

Mina uses funded childcare to continue her studies

“Our search was initially disheartening as many of the childminders didn’t want to look after a two year old. But then we came across Pauline. Pauline had space available, and she sounded just like the carer that we were looking for.

“We wanted to make sure the carer’s general knowledge and practice would be similar to how we were caring for Andy and what he was used to. We visited and had a detailed chat about many things including Andy’s nap times, mealtimes and likes and dislikes.

“Pauline was an experienced childminder who worked with her daughter Camellia. They showed us around and we saw toddlers playing contentedly. She gave us a list of clubs and children’s centres that they visited and

a list of childminders that they met regularly with, so that the children that they cared for could play together. I was impressed by the Home Book which was a communication book with a daily record of Andy’s sleep, play, changing times and any significant things that happened over the day.

“He started nursery this year and Pauline collects him after nursery and looks after him until it’s time for me to pick him up.”

“Using a childminder has been a great experience for Andy and my family. Andy just loves Pauline and Camellia and has named his teddy bears after them. There is a strong bond between Andy, Pauline and Camellia and his eyes light up every time he talks about them. Although he is in nursery

now, he asks if he can visit them and go to the library with Pauline and Camellia.

“I’ve finished my first degree and I’m starting my Masters’ degree soon. I don’t plan to change my childcare. My son is happy, and he is doing well. He has friends at nursery, and I like to know that he has Pauline as his carer at the end of each nursery day. I treasure this continuity in his life.”



Free childcare for 2, 3 and 4-year olds.

Some families with two year olds and all families with three and four year olds can claim up to 15 hours a week of registered childcare. Some working parents can claim up to 30 hours a week.

You can choose between a variety of settings, such as a childminder, nursery or preschool playgroup.

What are the benefits of using free childcare?

Early learning with a registered childcare provider can help your child develop important language, physical and social skills during the years when their brain is developing the fastest. Your child will also have the opportunity to make friends, learn new skills and grow in confidence before they reach school.

Don't miss out – find out more and apply at
www.lambeth.gov.uk/freeearlylearning

Build your family with fostering

Earlier in March we celebrated LGBT+ Fostering and Adoption Week to show how becoming a foster parent can help 'build your family'. We really value our diverse fostering community, and this is just one of the things that makes Lambeth a really special place to foster.

Whatever your background, we'd love to hear from you. Arrange a call back on our website or email fosteringduty@lambeth.gov.uk

Meet local hero, Thomas.

Thomas is a single, long-standing Lambeth resident and currently fosters with his cat! He shares a bit about his experience of fostering so far: "I've been fostering for nine months now and I'm currently on my second placement. I've fostered a teenager who stayed with me for four months. And I'm now with a ten-year-old.

"We just hit it off straight away. I'm

quite lucky that he's got a load of energy, just like me. We've spent a huge amount of time just going to the park together and we've been building a go-kart together during half term.

We asked Thomas what he would say to others thinking about fostering. "Specifically, regarding the LGBT aspect. My first placement was a teenager who had some questions around his

own sexuality. Being gay helped me provide support for him and have an insight into what he was going through, so it was a real advantage. Also, generally being from a minority helps you relate to children in care as you can relate to growing up and being treated differently."

Read Thomas' full story at lambeth.gov.uk/foster-hero

“

To everyone, regardless of who you are, I'd say do your research to make sure you're comfortable with what fostering involves. Once you've looked into it and you know what you're getting yourself into, then go for it would be my advice.”

Thomas



ADVERTISEMENT

The writing's on the wall for glyphosate

We've already stopped using glyphosate in parks and housing estates and, from October 2021, we'll stop using it to control weeds on our streets, too.

However, before October there will be two final glyphosate treatments on Lambeth's streets. Last year, residents were offered the opportunity to get involved with their local community and weed manually instead. Over 100 streets took part, and this year we're hoping even more will join in.

To find out how to stop glyphosate from being sprayed on your street, visit:

lambeth.gov.uk/weeding

ADVERTISEMENT



Ready Steady Go!

FREE sessions to help families achieve a healthier diet and a more active lifestyle.

New courses will resume in April 2021.

To register or make a referral please use our online link at lambeth.gov.uk/ready-steady-go

Contact the team on **020 7926 0619** or email readysteadygo@lambeth.gov.uk

ADVERTISEMENT

Funding for Change

LAMBETH
YOUTH
OPPORTUNITIES
FUND



The Lambeth Youth Opportunities Fund provides vital resources to our borough's voluntary community sector. We support aspirational programmes aimed at helping young people to be safe, resilient, healthy and achieve their potential. These programmes are delivered by committed community groups such as Iconic Steps, a social enterprise in Lambeth that supports young people (aged 16-25) from diverse and underrepresented backgrounds to enter the media industry.

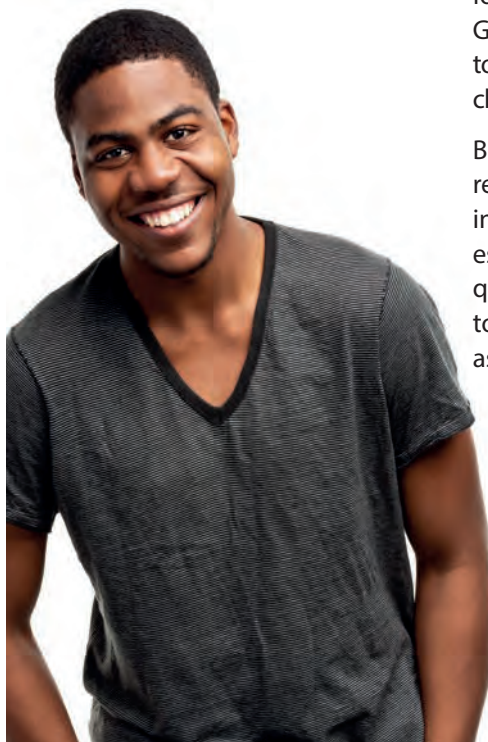


Like everyone, the lockdown experience for me has had its fair share of hardships. Going from full-time employment, to suddenly redundant would be challenging at the best of times.

But when added to additional restrictions, a significant reduction in access to outside spaces and especially human contact and very quickly I, like many others, felt a toll on my mental health. Especially as I lived alone throughout the restrictions of 2020, being suddenly confronted with nothing but the limits of my immediate living spaces felt like luxury for the first few weeks but quickly began to feel like a golden cage.

However, as life found a new normal, I found new ways to connect, built new relationships and through opportunities presented by organisations such as programmes run and delivered by Iconic Steps, I've found new ways and methods of employment the shape of my life began to become more and more positive. I feel that my generation is at risk of becoming a lost generation if not for the opportunities afforded by and supported by schemes like the LYOF. //

Okwute Izuchukwu, 26 years old,
Iconic Steps participant



You can make a difference to young people in your borough by making a donation to the Lambeth Youth Opportunities Fund today.

www.lambethyouthopportunitiesfund.org.uk

This Easter, Lambeth will again be teaming up with Southwark council to offer a programme of holiday activities and healthy meals to children and young people in the boroughs who are eligible for free school meals. Money for the project, which has been secured from the Department for Education in conjunction with the Mayor's Fund for London, will go towards paying for more than 20 hubs across Lambeth.



Get ready for an Easter of Food and Fun!



During last year's Summer of Food and Fun, 87,874 meals were distributed to almost 2,800 children across 44 hubs, and young people were able to take part in activities such as children's play, sports and leisure, and creative arts. Faith and community groups, SEND provision, and schools and libraries were also part of the programme.

As the Covid-19 crisis has continued, parents from low income households have been especially squeezed over the last year: more than three-quarters have said they had less money to spend on food, and 83% say that the pandemic has impacted on

food security in their boroughs, with the same percentage saying children have been hardest hit.

Kitchen Social, a grass-roots food provision organisation set up by the mayor in January 2017, has provided meals to hundreds of thousands of young Londoners since then during school holidays, and have been funding hubs across the borough. Last summer they delivered: breakfast boxes; Take and Make boxes with meal kits to encourage children to cook at home; books, and arts and crafts supplies; sanitary products; and physical activity equipment such as skipping ropes, balls and bats.

“

We're delighted to be able to offer a programme this Easter of holiday activities and food services for those children who have been hardest hit by the pandemic. We hope that it will grant young people the opportunity to learn skills and to make new friends. ”

Merlin Joseph, Strategic Director of Childrens Services

Help and support on offer



support for residents

Get help for you or someone you know

Lambeth Council wants to ensure all residents have access to the support and information they need to help them get through these critical times.

If you need assistance a list of food, medicine, and social wellbeing support options is available to you on the Council's website:

<https://beta.lambeth.gov.uk/covid-get-support>

You can also call the MyCommunity Gateway helpline for help with social support, advice and support to connect you up with local services: **0333 360 3700** Monday to Friday, 9am – 5pm

Or email **mycommunity@ageuklambeth.org**

Get help if you are clinically extremely vulnerable

Supporting residents who have been informed that they are clinically extremely vulnerable to Covid-19 by the Department of

Health are encouraged to sign up for the National Shielding Service System (NSSS). This will enable them to access priority online shopping with: Sainsbury's, Tesco, Morrisons, Iceland, Waitrose and Ocado.

You can sign-up via the Government website:

<https://www.gov.uk/coronavirus-shielding-support>

If you are not able to access the website, please call the MyCommunity Gateway Helpline: **0333 360 3700**.



Volunteering

Team Lambeth Volunteer Sign up to volunteer for opportunities around the borough of Lambeth please fill out the online form: **<https://beta.lambeth.gov.uk/volunteer-to-help-your-community>**

OnHand Volunteer Service Volunteer support for local neighbours such as shopping, running errands, or befriending calls. Volunteers are always needed!

Please visit **<https://www.beonhand.co.uk/>** to sign up, or email **mycommunity@ageuklambeth.org**

NHS Volunteer Responders Volunteer service for prescription collections and everyday tasks.

Please visit **<https://nhsvolunteerresponders.org.uk/services>** or call **0808 196 3646**.

ADVERTISEMENT



Understanding Lambeth's LGBTQI+ communities' experience of Covid-19 LamQ+

Are you LGBTQI+? Do you live in Lambeth?

If yes, we would love to hear from you about the impact of the coronavirus pandemic on your life

Our research is looking to gain insight into the experiences of LGBTQI+ communities and to influence policies and services that enable LGBTQI+ people to thrive.

The research project is led by experienced researchers from London Metropolitan University working closely with local organisations. The work will be conducted between January and July 2021 and has three broad aims:

- 1** Identify the needs and challenges experienced by Lambeth's LGBTQI+ communities
- 2** Develop new understanding of the experiences and needs of Black and Ethnic Minority LGBTQI+ people who have been under-represented in previous studies
- 3** Design solutions with LGBTQI+ communities, researchers, policy maker and providers to develop solutions that work.

How to get involved?

For more information about the project email Daniella Shaw, d.shaw2@londonmet.ac.uk, or visit our website, londonmet.ac.uk/lamq

If you would like to find out more, but do not have access to the internet, please contact us on **020 7133 5254**.



OPENING DOORS
LONDON



Free service to make an advance care plan



Has Covid-19 made you think about what you would want to happen if you became very unwell?

Lambeth residents can get free help to record your care and medical treatment wishes in an advance care plan, so that your family and doctors will know what's important to you if you're unable to tell them later. You can include your:

- care needs and preferences
- daily routines
- religious practices
- care responsibilities for other family members.

You can specify medical treatments you wouldn't want in certain situations. Or you can appoint someone else to make these decisions on your behalf,

like John and his wife Carol did.

John and Carol got support from the service to make a Lasting Power of Attorney for health and welfare. They decided to do it after John had open-heart surgery. John says: "You have to take precautions because things can go wrong. I feel more confident now and trust the doctors."

A lot of people believe their family can automatically make decisions on their behalf if they can't, but this isn't true. So, like John, people usually find making a plan helps them feel more in control.

John and Carol found the service

“
You have to take precautions because things can go wrong.”

really clear and a great help. They even learned some new things about each other as they filled out the forms. "I was surprised about some of Carol's views. It was quite revealing!" says John.

You can make a plan at any time. You don't need to be a certain age or unwell and you don't need a solicitor.

The service team can tell you about the different documents, help you decide which ones you want, and support you to complete and share them with the right people.

Choose one-to-one support or create your own plan.

Call Age UK Lambeth's Gateway service, tel: **0333 360 3700** or visit: www.healthwatchlambeth.org.uk/advancecareplanning

BOOK AHEAD

From Monday 22nd March 2021

You must book a slot to visit the
Smugglers Way Household Waste
and Recycling Centre 'the tip'.

Bookings can be made from **15th March**

The Booking
System is being
introduced to make
the service more
efficient and to help
reduce queues at
peak times.

**To find out more
visit www.wrwa.gov.uk**

**During your visit - Please observe
social distancing guidelines.**



We're creating a new in-house team to make repairs to communal spaces on our estates.

We're planning to recruit 2 area managers and an admin team for works in the North and South. We'll train and employ local people, including creating at least 6 trade apprenticeships in the team's first year. Our professional teams will deliver a mixture of estate based minor repairs and disabled adaptations repairs on behalf of the Home Improvement Agency (HIA).

Task and finish

The idea of starting an in-house communal repairs team came from a report by residents who formed a Task and Finish group.

They made 21 recommendations for the council to improve the way communal repairs are reported, recorded, completed and 100% inspected.

Inspections and updates

The team will include surveyors and health and safety inspectors, and we plan to carry out an inspection of every estate once a quarter. After the inspection we'll work with housing officers to report back to the estate what the inspection found, issue a list of repairs and post to estate noticeboards. Customers can also log communal repairs via our call centre.

Lambeth Council will put into action all 21 proposals from the residents' Task & Finish Group report, including:

- 100% work to be post inspected, based on feedback from residents.
- Trained Resident Inspectors to work alongside surveyors.
- Enabling residents to progress chase communal repairs.
- Including resident satisfaction and feedback in the Communal Repairs service evaluation process.

Join the team

'Community Works' will soon start delivering for residents, so we've begun recruiting for a mixture of office-based staff and trades operatives to help make our estates a better place to live. We have trades and office roles available, please visit the 'Lambeth Community Works' website to express interest.

Community
WORKS

Community Works

Lambeth's
new in-house
repairs team



<https://beta.lambeth.gov.uk/communityworks>

Tel: 020 7926 0500 Email: opportunitylambeth@lambeth.gov.uk

Mayor of London and London Assembly (GLA) elections 2021



GLA elections take place on Thursday 6 May. Lambeth residents registered to vote in local government elections can vote at these elections, including European Union citizens. Polling stations will be safe places to vote, but there are other ways to vote, such as by post or proxy. Apply early if you'd like to vote by post or proxy.

About the elections

There are three ballot papers for this election:

- Mayor of London
- Lambeth and Southwark constituency London Assembly Member
- London wide Assembly Members

Find out more about the GLA at londonelects.org.uk

Register to vote by Monday 19 April at gov.uk/register-to-vote. If you're already registered in Lambeth, you don't need to apply again.

Postal & Proxy voting

Postal voting means a ballot paper is posted to you before polling day. If you want to vote by post at this

election, you must apply by **5pm on Tuesday 20 April**.

Proxy voting is where someone else votes on your behalf, either at your polling station or by post.

If you'd like to vote by proxy at this election, you must apply by **5pm on Tuesday 27 April**.

Visit lambeth.gov.uk/vote for information on postal and proxy voting and to download an application form.

Poll Cards

Poll cards will be sent to voters from 22 March. You do not need your poll card to vote but will need to confirm your name and address at the polling station. Find your polling station online at wheredoivote.co.uk.

Covid-19

Safety measures will include:

- Limited numbers inside polling stations
- Face coverings worn by staff
- Protection screens
- Hand sanitiser

At the polling station voters should:

- Wear a face covering
- Maintain social distancing
- Bring your own pen or pencil

Election results

Counting is on Friday 7 and Saturday 8 May. Results will be available at londonelects.org.uk.

For more information or to request a paper application form visit lambeth.gov.uk/vote or phone 020 7926 2254.

HAVING THE COVID-19 VACCINE **IS FREE AND EASY**

**Don't miss your first
appointment**

**Stay safe after your
first dose**

**Make sure you get
your second dose**

Magdi Ibrahim
Advanced Health
Care Assistant at
Whiston Road Surgery

**For more
information
scan here**



Get the COVID-19 vaccine **when it's your turn**