



Transforming Lives through Education,  
Training and Development

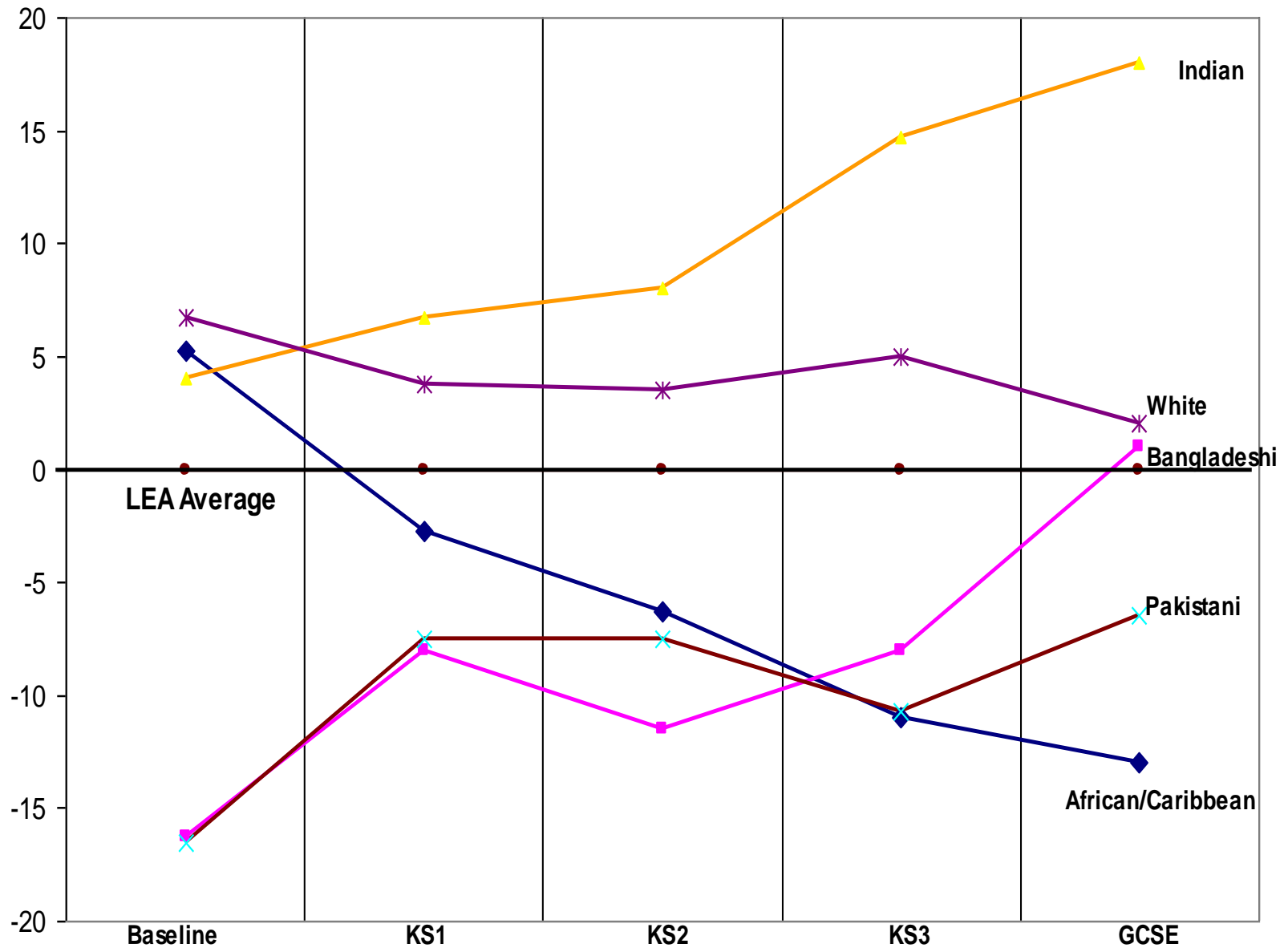
**Stephen Brooks**

National Development Manager

07940 237959

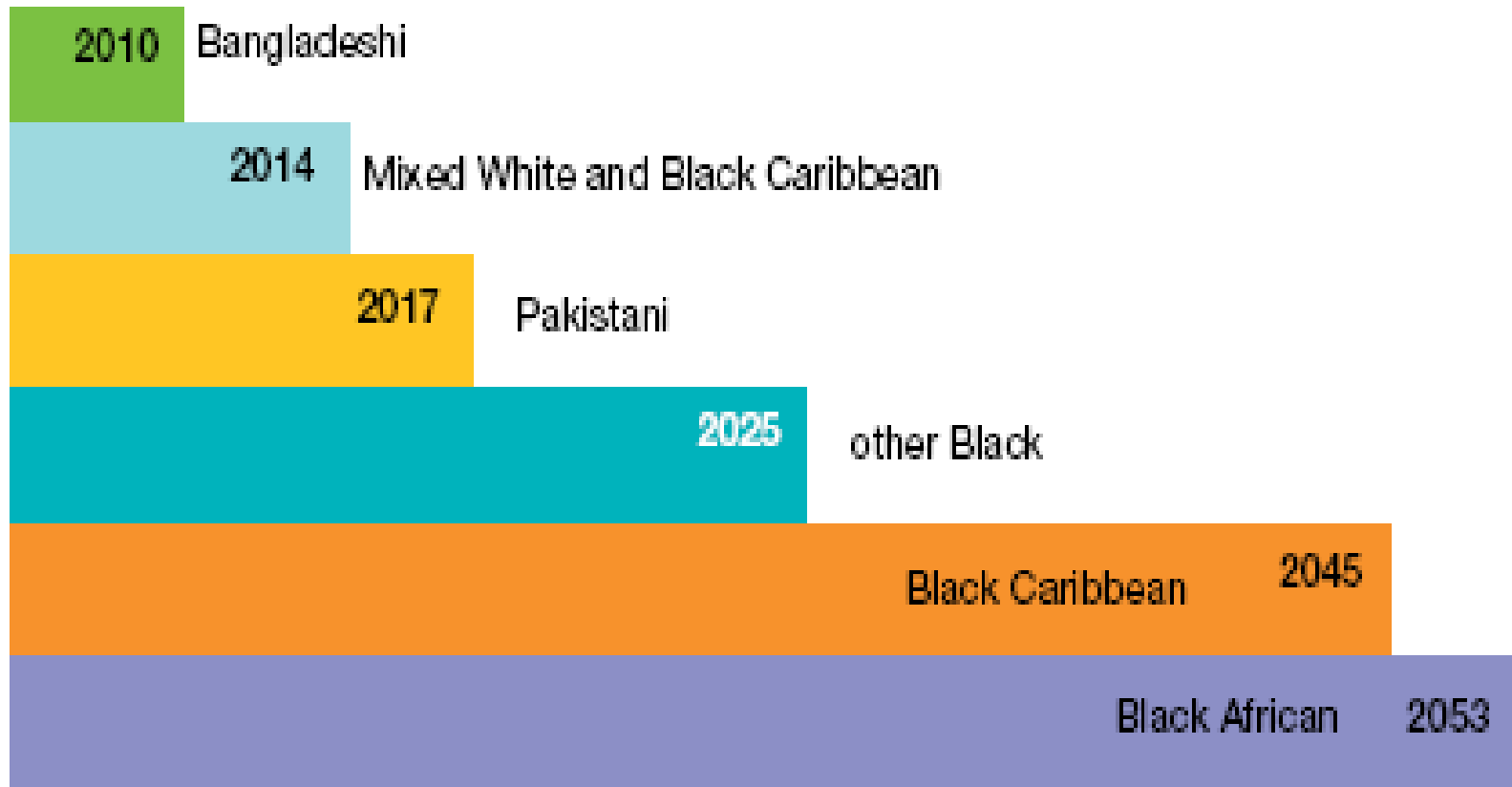
[sbrooksai@yahoo.co.uk](mailto:sbrooksai@yahoo.co.uk)

## Ethnic group performance compared to LEA average at each Key Stage

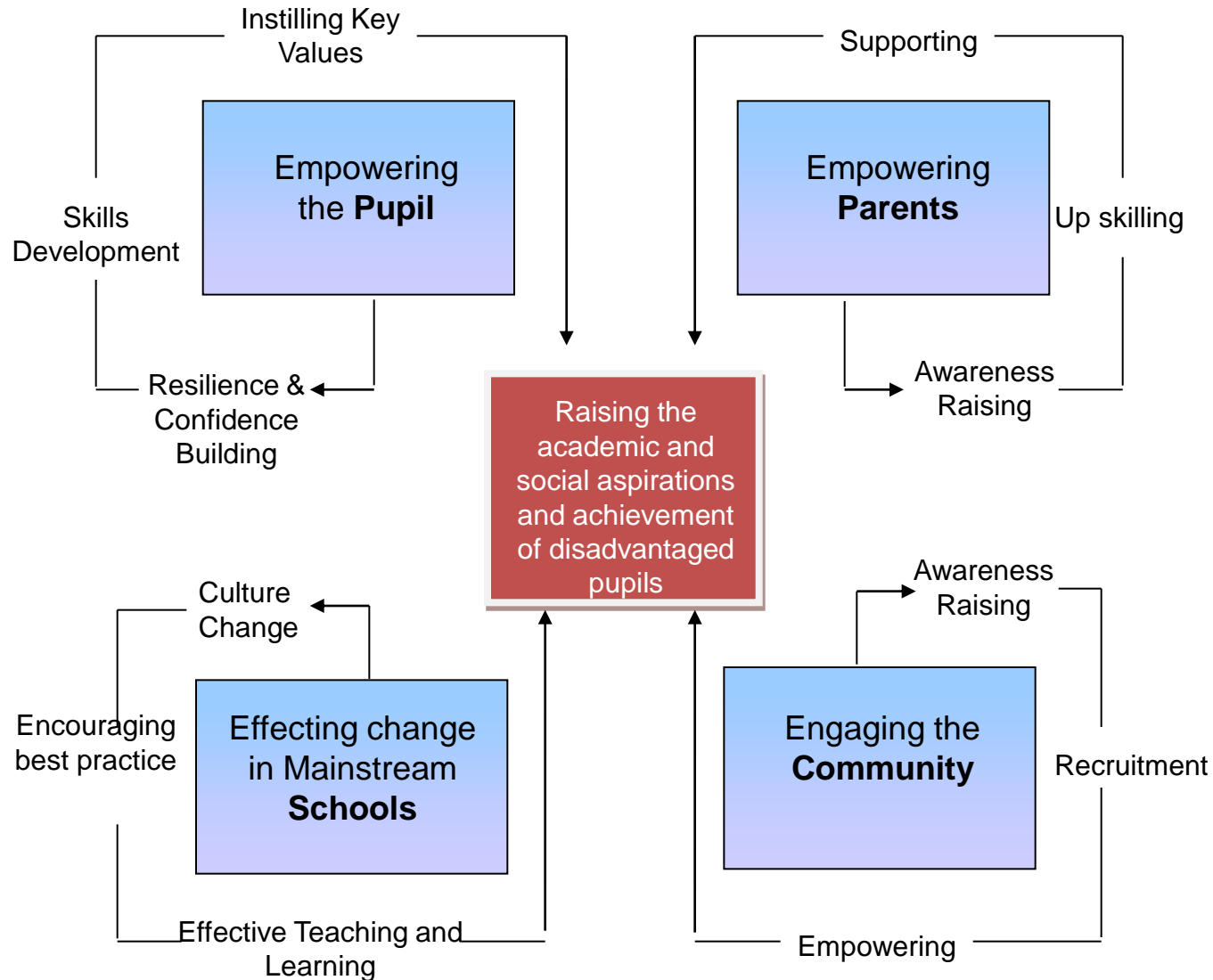


# *We Have a Problem!*

If the achievement of 11 year olds at Key Stage 2 continues to improve at its current rate of progress, how long will it be before children from these ethnic groups close the attainment gap in English and Maths?



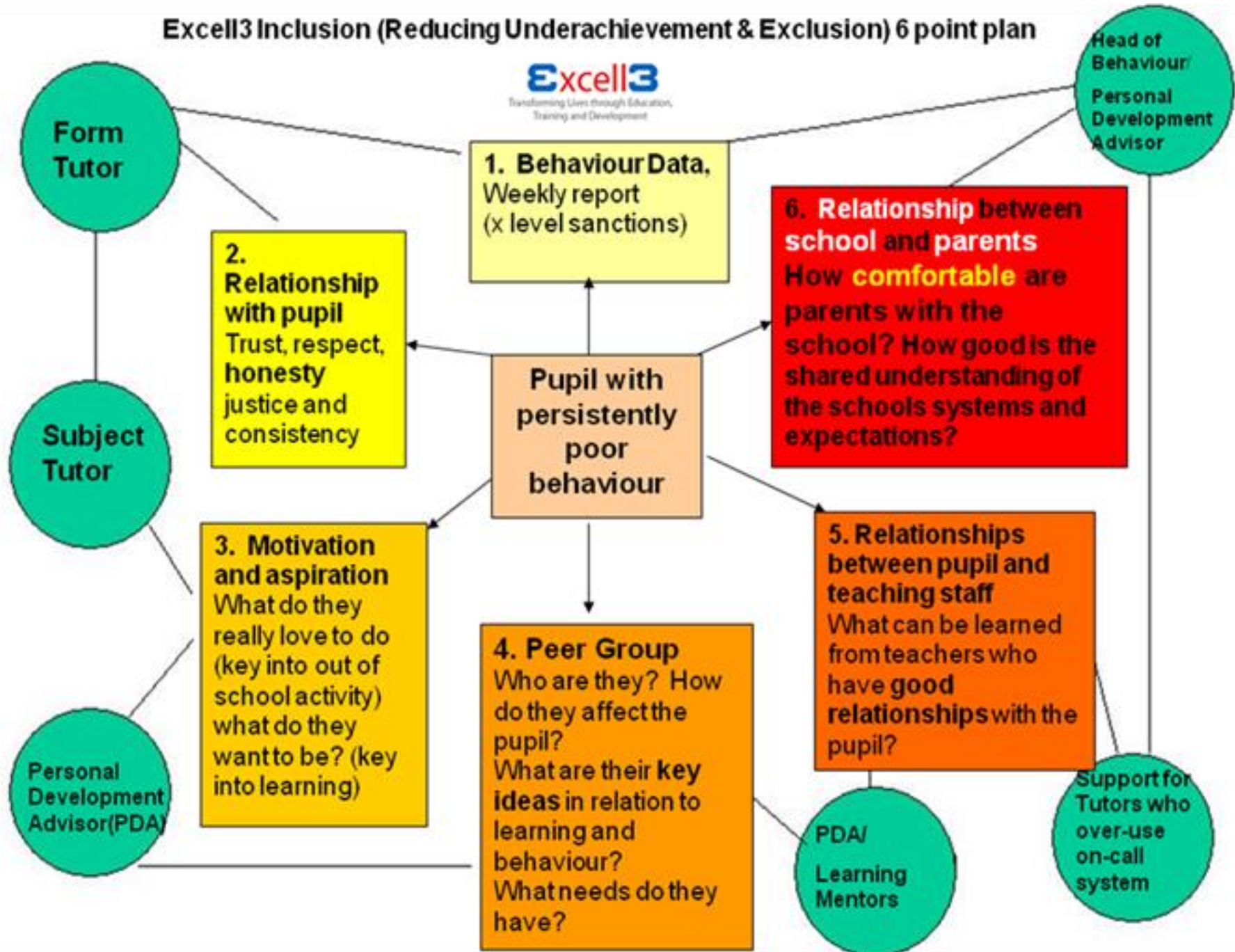
# Excell3 utilizes a four pillar strategy in pursuit of its mission



# Excell3 Inclusion (Reducing Underachievement & Exclusion) 6 point plan

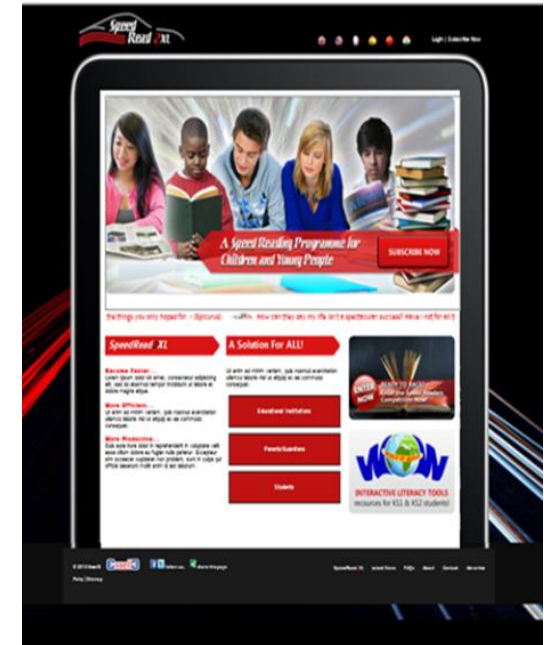
**Excell3**

Transforming Lives through Education,  
Training and Development



# Excell3

Transforming Lives through Education,  
Training and Development



*the* **AMOS BURSARY**

Realising the ambitions of young men





2018  
Admissions  
Now Open

Education Excellence & Character Development

Birmingham's 1<sup>st</sup> Christian-based Free School

Early Years & Primary School



## A High Achieving School

In Early Years Foundation Stage children are assessed against 17 goals.  
We are achieving higher than nationally and across Birmingham

EYFS Good level of Development June 2016

The results are as follows:

Birmingham	63.7% reached at least expected levels
Nationally	69% reached at least expected levels
King Solomon	<u>71% reached at least expected levels</u>

Its not too late, **APPLY TODAY** for 2018 Admissions

To apply online visit: [www.birmingham.gov.uk/schooladmissions](http://www.birmingham.gov.uk/schooladmissions)



- AB selects academically able young black men at the age of 16/17 to take part in their personal and professional development programme.
- **Young men supported right through to university graduation (average of 4.5 years).**
- Selective process based on social contextual factors such as household income, FSM, limited higher education attendance in the family.
- **Supported by private donors, educational and corporate support, incl. UCL and Imperial College.**





Lumina  
**Splash**  
App

