

EDUCATION STATISTICS

2007-08


INTRODUCTION

This is the eleventh edition of the Lambeth "Education Statistics", providing statistical data on the Education Service within the borough.

Everyone now realises how important it is to measure performance by objective means. Statistical measurements can never tell us everything about the effectiveness of a service. However, they can help us to judge progress, to question our use of resources and to compare what we are doing with the achievement of others in our quest for constant improvement. Better statistics lead to better performance management. It is at the heart of what local authorities can do to support educational achievement.

In Lambeth, we are committed to making ourselves a questioning and a learning local authority. We hope this document will enable those in schools and other services to make better judgements about their own performance and to set targets for improvement. We intend that this data will also inform every aspect of our work and the decisions that the Council makes.

This data will help the service to manage performance better and to make best use of resources in addressing issues of pupil achievement.

A handwritten signature in black ink, reading "Phyllis Dunipace". The signature is written in a cursive style with a large initial 'P' and 'D'.

Phyllis Dunipace
Executive Director of Children and Young People's Service (CYPS)
Email: pdunipace@lambeth.gov.uk

CONTENTS

1. Lambeth Population	Page
Population trends	1
Population by gender and age	1
Population by ethnic group	2
Social characteristics	2
2. School Population	
Numbers of Pupils & Establishments	3
Pupil Rolls	3
Education for the Under Fives	3
Pupil Rolls: Primary & Secondary Schools	4 & 5
Roll Projections: Primary & Secondary Schools	6
Roll Projections: Primary Schools by Planning Areas	7 & 8
Destination of Year 11 Leavers from Lambeth Secondary Schools	9
3. Resources in the Education Service	
Primary Schools Budget Share	10 & 11
Qualified teaching staff	12
Class Size	12
4. Attendance and Exclusions	
Pupil Absence & Attendance: Primary & Secondary Schools	13-16
Exclusions by type of school	16
5. Social Characteristics of Pupils	
Socio-Economic Factors: By School	17 & 18
Ethnic Background of Pupils	19-21
Stages of Fluency in English	22
Main Languages spoken	22-25
Free School Meals Eligibility	26
Special Educational Needs	27-28
6. Pupil Achievement	
National Curriculum Terms	29
Achievement at Key Stage 1	30-35
Achievement at Key Stage 2	36-45
Achievement at Key Stage 3	46-49
Achievement at Key Stage 4 (GCSE)	50-54
Achievement at A/AS Level	55-56
Key Stage 1-4 Performance Trends	57-59
7. Performance Targets	
LA Targets: Key Stages 2 to 4	60

LAMBETH POPULATION

Lambeth Population Trends 1901 - 2001

Year	Population 000s
1901	384
1911	408
1921	419
1931	421
1939	391
1951	347
1961	342
1971	308
1981	244
1991	245
2001	273

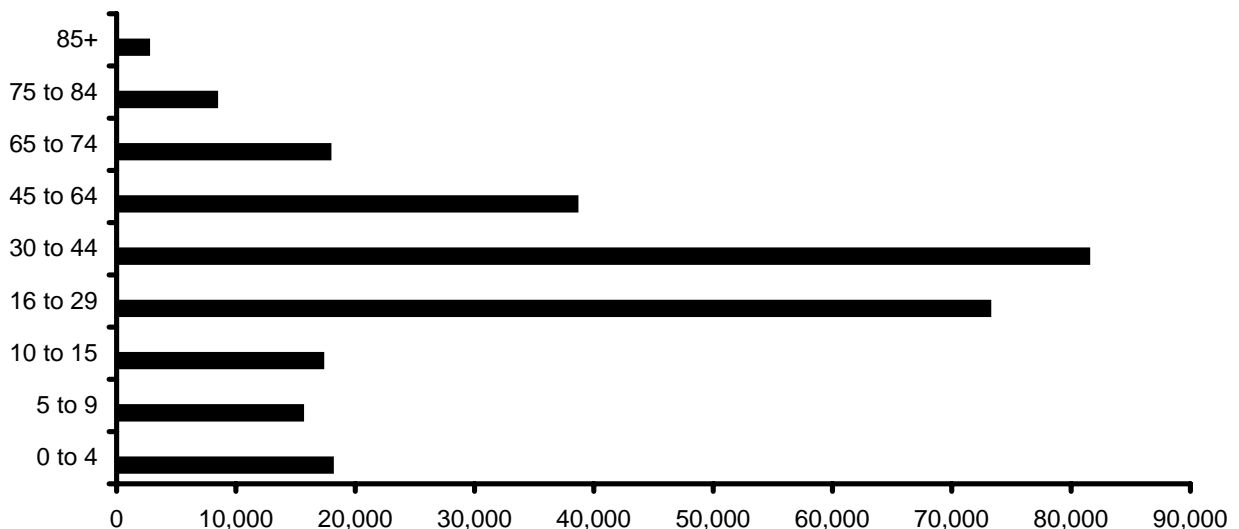
Source: ONS 2001 Census.

Borough Population by Age (Estimates 2001)

Age	Total Persons
Total	273,300
0 to 4	18,100
5 to 9	15,600
10 to 15	17,300
16 to 29	73,200
30 to 44	81,500
45 to 64	38,600
65 to 74	17,900
75 to 84	8,400
85+	2,700

Estimated Resident Population Mid 2001 based on revised 2001 Census data, Source ONS Population Estimates Unit

Borough Population (Estimates 2001)

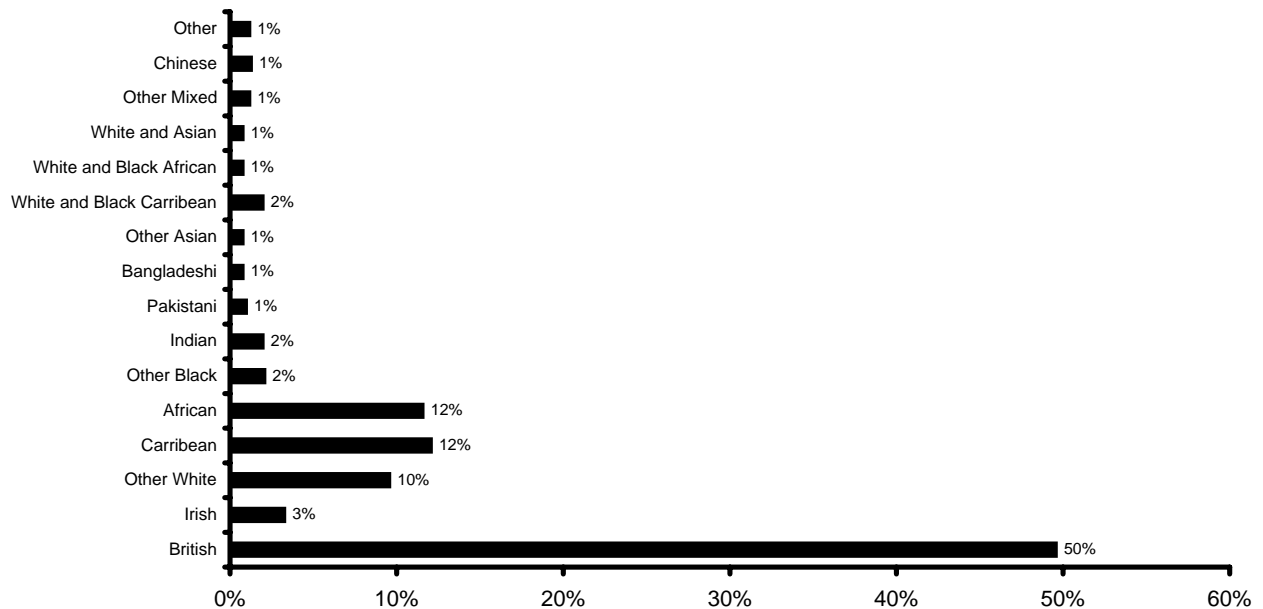


SOCIAL CHARACTERISTICS

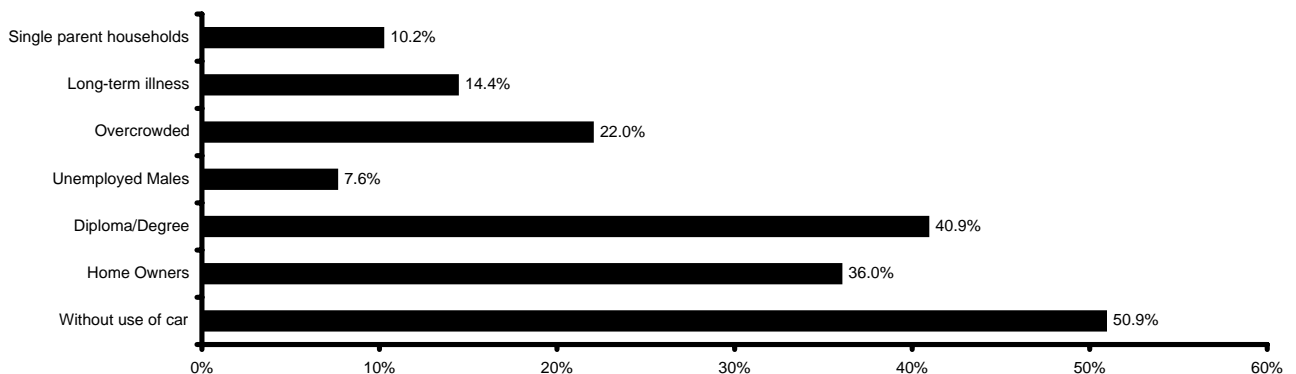
Ethnic Background of Lambeth, 2001 Census

		Lambeth	Inner London	Greater London	England
White	British	49.6%	50.5%	59.8%	87.0%
	Irish	3.3%	3.4%	3.1%	1.3%
	Other White	9.6%	11.8%	8.3%	2.7%
Black or Black British	Carribbean	12.1%	6.9%	4.8%	1.1%
	African	11.6%	8.3%	5.3%	1.0%
	Other Black	2.1%	1.3%	0.8%	0.2%
Asian or Asian British	Indian	2.0%	3.1%	6.1%	2.1%
	Pakistani	1.0%	1.6%	2.0%	1.4%
	Bangladeshi	0.8%	4.6%	2.1%	0.6%
	Other Asian	0.8%	1.3%	1.9%	0.5%
Mixed	White and Black Carribbean	2.0%	1.3%	1.0%	0.5%
	White and Black African	0.8%	0.7%	0.5%	0.2%
	White and Asian	0.8%	0.9%	0.8%	0.4%
	Other Mixed	1.2%	1.1%	0.9%	0.3%
Chinese, other	Chinese	1.3%	1.4%	1.1%	0.4%
	Other	1.2%	2.0%	1.6%	0.4%

Source: ONS 2001 Census.



Social Characteristics of Lambeth Population



Source: ONS 2001 Census.

SCHOOL POPULATION

Numbers of Pupils and Establishments, January 2008

School type	All Schools	
	Number of schools	Number of pupils
Nursery	5	489
Primary	60	20,283
Secondary	12	9,141
Special	5	458
PRU	3	146
Total	85	30,517

Source: DCSF Schools Census January 2008

PRU=Pupil Referral Units

Pupil Rolls 1992 - 2008

Year	Nursery Schools	Nursery Classes in Primary Schools	Primary Schools (excluding Nursery)	Secondary Schools	Special	PRUs	Total
1992	447	1,870	16,864	5,628	843	n/a	25,652
1993	450	2,006	17,095	6,350	782	n/a	26,683
1994	452	1,960	16,972	6,306	767	n/a	26,457
1995	450	2,011	17,016	6,574	729	n/a	26,780
1996	450	2,001	17,119	6,485	675	n/a	26,730
1997	444	2,093	17,106	6,589	623	n/a	26,855
1998	444	2,121	17,632	6,755	647	n/a	27,599
1999	455	2,203	17,690	6,980	630	n/a	27,958
2000	469	2,215	17,683	7,117	642	n/a	28,126
2001	472	2,258	17,733	7,213	642	n/a	28,318
2002	474	2,168	17,778	7,303	607	n/a	28,330
2003	489	2,165	17,829	7,468	523	119	28,593
2004	482	2,147	17,751	7,801	519	125	28,825
2005	443	2,126	17,736	8,100	500	113	29,018
2006	487	2,244	17,870	8,416	465	179	29,661
2007	490	2,258	17,897	8,728	456	180	30,009
2008	489	2,245	18,038	9,141	458	146	30,517
% change 1992-2008	9.4%	20.1%	7.0%	62.4%	-45.7%	n/a	19.0%
% change 1998-2008	10.1%	6.6%	2.4%	42.4%	-22.4%	n/a	11.4%
% change 2003-2008	0.0%	4.3%	1.2%	29.7%	-7.7%	n/a	7.5%

Source: DCSF Form 7 1992 - 2001, PLASC 2002 - 2006, and Schools Census January 2007 onwards

Data was not available from one secondary school in 1992

n/a = not available

Education for the Under Fives, January 2008

Type of Provision	Full-Time Pupils	Part-Time Pupils	Total Pupils
Nursery Schools	226	263	489
Nursery Classes in Primary Schools	1,046	1,199	2,245
Reception Classes	2,744	39	2,783
Total	4,016	1,501	5,517

Source: DCSF Schools Census January 2008

SCHOOL POPULATION

Primary School Roll Trends 2003-2008

School	Total Roll					Nursery	Ages 4-10	Total
	2003	2004	2005	2006	2007	2008	2008	2008
Allen Edwards	447	454	435	421	417	51	373	424
Archbishop Sumners CofE	226	225	235	230	228	26	207	233
Ashmole	238	237	230	231	220	35	202	237
Bonneville	417	408	420	405	423	40	375	415
Christ Church CofE (Brixton)	179	165	178	180	161	-	172	172
Christ Church Streatham CofE	211	210	209	206	208	-	207	207
Clapham Manor	444	442	439	446	446	32	414	446
Corpus Christi RC	358	369	361	378	377	48	340	388
Crown Lane	387	385	393	396	414	39	381	420
Durand	760	812	833	864	869	109	750	859
Elm Wood	218	223	226	216	230	28	194	222
Fenstanton	573	548	524	526	505	60	473	533
Glenbrook	n/a	427	403	415	406	36	354	390
Granton	366	401	410	415	423	26	397	423
Heathbrook	432	432	411	415	405	51	357	408
Henry Cavendish	393	393	425	413	427	67	360	427
Henry Fawcett	360	353	345	394	360	33	327	360
Herbert Morrison	221	213	204	211	206	30	169	199
Hill Mead	484	454	457	474	474	66	390	456
Hitherfield	423	420	422	431	447	70	376	446
Holy Trinity CofE	327	345	365	391	408	-	414	414
Immanuel CofE	256	254	249	255	250	49	208	257
Jessop	234	212	199	204	197	35	181	216
Johanna	189	189	158	168	171	30	154	184
Jubilee	454	476	476	465	443	28	383	411
Julians	210	210	209	210	210	-	239	239
Kings Avenue	546	578	613	602	597	67	511	578
Kingswood	371	337	352	406	413	62	365	427
Lark Hall	n/a	493	468	445	423	57	369	426
Loughborough	480	477	472	467	489	89	405	494
Macaulay CofE	239	245	237	230	229	32	194	226
Orchard	n/a	n/a	n/a	n/a	124	-	150	150
Paxton	235	232	234	239	241	38	204	242
Reay	251	250	251	249	250	40	208	248
Richard Atkins	456	441	426	419	392	29	350	379
Rosendale	642	640	652	648	676	47	626	673
St Andrew's CofE	199	193	192	186	179	-	196	196
St Andrew's RC	453	455	461	471	469	51	417	468
St Anne's RC	420	413	421	425	421	42	382	424
St Bede's RC	219	226	222	224	225	57	154	211
St Bernadette RC	238	236	239	233	224	-	225	225
St Helen's RC	268	270	268	318	320	44	268	312

Source: DCSF PLASC 2003 - 2006 & Schools Census January 2007 onwards

n/a = not available

SCHOOL POPULATION

Primary School Roll Trends 2003-2008

School	Total Roll					Nursery	Ages 4-10	Total
	2003	2004	2005	2006	2007	2008	2008	2008
St John The Divine CE	234	236	236	235	235	26	208	234
St John's CofE	248	244	244	244	244	38	200	238
St Jude's CofE	204	208	209	209	206	-	207	207
St Leonard's CofE	206	200	195	196	194	-	198	198
St Luke's CofE	202	196	195	191	196	-	196	196
St Mark's CofE	198	191	199	199	186	-	189	189
St Mary's RC	379	380	366	359	355	38	316	354
St Saviour's CofE	205	201	204	205	206	-	209	209
St Stephen's CofE	208	227	217	212	199	26	180	206
Stockwell	467	456	461	438	438	50	400	450
Streatham Wells	254	252	250	258	258	48	210	258
Sudbourne	359	361	359	366	361	50	309	359
Sunnyhill	469	416	423	439	399	63	349	412
Telferscot	230	226	234	222	238	31	204	235
Vauxhall	203	209	206	206	206	30	181	211
Walnut Tree Walk	265	260	270	291	287	35	225	260
Woodmansterne	470	455	433	441	449	72	417	489
Wyvil	438	437	437	481	501	94	419	513
Total	19,994	19,898	19,862	20,114	20,155	2,245	18,038	20,283

Source: DCSF PLASC 2003 - 2006 & Schools Census January 2007 onwards

Secondary School Roll Trends 2003-2008

School	Total Roll					Ages 11-15	Ages 16+	Total
	2003	2004	2005	2006	2007	2008	2008	2008
Archbishop Tenison's	508	515	490	514	529	490	46	536
Bishop Thomas Grant	908	904	899	899	904	933	-	933
Charles Edward Brooke	852	857	876	873	881	738	85	823
Dunraven	940	1,078	1,158	1,202	1,213	978	218	1,196
Elmgreen	n/a	n/a	n/a	n/a	n/a	180	-	180
La Retraite	804	817	801	795	853	720	168	888
Lambeth Academy	n/a	n/a	184	360	532	692	37	729
Lilian Baylis	601	609	611	622	624	624	-	624
London Nautical	620	618	622	654	649	569	91	660
Norwood	692	698	682	696	708	714	-	714
St Martin-in-the-Fields	688	759	806	819	852	716	169	885
Stockwell Park	788	946	971	982	983	973	-	973
Total	7,468	7,801	8,100	8,416	8,728	8,327	814	9,141

Source: DCSF PLASC 2003 - 2006 & Schools Census January 2007 onwards

'Ages 11-15' refers to pupils of statutory school age. '16+' refers to those of non-statutory school age, with the age of pupils determined by how old they were at the start of the academic year.

n/a = not available

ROLL PROJECTIONS

Roll Projections for Primary and Secondary Schools 2005 - 2018

Year	Primary All Pupils	Secondary All Pupils
2005	17,736	8,100
2006	17,870	8,416
2007	17,911	8,865
2008	18,096	9,260
2009	18,243	9,596
2010	18,527	9,680
2011	18,846	9,673
2012	19,084	9,638
2013	19,378	9,474
2014	19,592	9,407
2015	19,686	9,442
2016	19,827	9,470
2017	19,893	9,542
2018	19,939	9,688

Source: GLA Projections based on DCSF Schools Census January 2008

Roll Projections: Secondary Schools by Age 2005 - 2018

Year	11+	12+	13+	14+	15+	16+	17+	18+	11-15 Statutory Age	16-18 Non Statutory Age	All	Planning Factor*
2005	1,671	1,533	1,453	1,449	1,392	325	230	47	7,498	602	8,100	-
2006	1,678	1,647	1,516	1,465	1,405	370	262	73	7,711	705	8,416	-
2007	1,739	1,682	1,636	1,553	1,525	357	285	88	8,135	730	8,865	-
2008	1,901	1,721	1,645	1,653	1,508	439	298	95	8,428	832	9,260	9,908
2009	1,800	1,886	1,698	1,669	1,643	434	367	99	8,696	900	9,596	10,268
2010	1,777	1,781	1,841	1,703	1,634	469	356	119	8,736	944	9,680	10,358
2011	1,781	1,755	1,734	1,814	1,642	462	371	114	8,726	947	9,673	10,350
2012	1,836	1,744	1,702	1,708	1,716	462	356	114	8,706	932	9,638	10,313
2013	1,792	1,790	1,673	1,668	1,617	478	348	108	8,540	934	9,474	10,137
2014	1,852	1,735	1,709	1,622	1,572	460	352	105	8,490	917	9,407	10,065
2015	1,934	1,796	1,648	1,651	1,519	453	336	105	8,548	894	9,442	10,103
2016	1,901	1,863	1,704	1,588	1,544	443	325	102	8,600	870	9,470	10,133
2017	1,964	1,825	1,762	1,641	1,485	456	310	99	8,677	865	9,542	10,210
2018	1,999	1,877	1,727	1,696	1,536	445	312	96	8,835	853	9,688	10,366

Source: GLA Projections based on DCSF Schools Census January 2008

* A 7% additional planning factor is applied by Lambeth on the overall projection for each year

Secondary school figures pre-2009 are actuals which include pupil referral units, and will therefore not match the secondary roll figures on page 5.

ROLL PROJECTIONS: PRIMARY SCHOOLS BY PLANNING AREA

Area 1 - Brixton Town Centre

Year	4+++	5+	6+	7+	8+	9+	10+	5 to 10+	4 yrs	All	Planning Factor*
2005	606	607	596	594	581	567	543	3,488	606	4,094	-
2006	606	604	596	597	589	571	549	3,506	606	4,112	-
2007	616	619	620	601	606	594	552	3,592	616	4,208	-
2008	647	605	611	613	577	594	584	3,584	647	4,231	4,527
2009	645	647	604	611	606	573	578	3,619	645	4,264	4,562
2010	673	646	651	609	604	599	555	3,664	673	4,337	4,641
2011	679	676	652	658	611	596	578	3,771	679	4,450	4,762
2012	676	684	684	658	657	612	574	3,869	676	4,545	4,863
2013	675	683	695	690	653	651	598	3,970	675	4,645	4,970
2014	673	683	696	700	682	641	629	4,031	673	4,704	5,033
2015	671	683	698	701	690	667	617	4,056	671	4,727	5,058
2016	670	683	700	702	689	673	639	4,086	670	4,756	5,089
2017	669	685	702	702	688	671	646	4,094	669	4,763	5,096
2018	671	687	705	703	688	671	646	4,100	671	4,771	5,105

Area 2 - Clapham Town Centre

Year	4+++	5+	6+	7+	8+	9+	10+	5 to 10+	4 yrs	All	Planning Factor*
2005	694	705	671	668	671	641	661	4,017	694	4,711	-
2006	694	691	683	647	648	652	634	3,955	694	4,649	-
2007	689	689	670	655	627	622	633	3,896	689	4,585	-
2008	720	680	661	672	644	621	603	3,881	720	4,601	4,923
2009	720	714	657	645	654	628	606	3,904	720	4,624	4,948
2010	748	715	690	641	626	639	619	3,930	748	4,678	5,005
2011	765	743	689	675	624	611	634	3,976	765	4,741	5,073
2012	767	760	715	671	660	615	611	4,032	767	4,799	5,135
2013	772	762	730	695	653	655	623	4,118	772	4,890	5,232
2014	776	767	730	709	677	649	669	4,201	776	4,977	5,325
2015	779	772	734	710	690	673	666	4,245	779	5,024	5,376
2016	782	775	737	713	692	689	693	4,299	782	5,081	5,437
2017	783	778	738	717	696	693	714	4,336	783	5,119	5,477
2018	783	780	739	719	700	700	722	4,360	783	5,143	5,503

Area 3 - Norwood Town Centre

Year	4+++	5+	6+	7+	8+	9+	10+	5 to 10+	4 yrs	All	Planning Factor*
2005	298	274	268	255	249	247	260	1,553	298	1,851	-
2006	293	299	270	262	258	258	242	1,589	293	1,882	-
2007	298	295	293	265	268	252	265	1,638	298	1,936	-
2008	298	292	296	294	271	269	246	1,668	298	1,966	2,104
2009	302	298	289	293	299	273	268	1,720	302	2,022	2,164
2010	314	301	296	285	295	297	269	1,743	314	2,057	2,201
2011	316	314	299	292	287	289	288	1,769	316	2,085	2,231
2012	316	316	311	292	293	282	277	1,771	316	2,087	2,233
2013	315	316	313	301	289	286	274	1,779	315	2,094	2,241
2014	316	315	313	302	296	281	278	1,785	316	2,101	2,248
2015	316	317	312	300	296	285	272	1,782	316	2,098	2,245
2016	316	316	313	299	293	286	277	1,784	316	2,100	2,247
2017	316	317	314	298	291	284	279	1,783	316	2,099	2,246
2018	316	316	313	296	289	283	279	1,776	316	2,092	2,238

Source: GLA Projections based on DCSF Schools Census January 2008

* A 7% additional planning factor is applied by Lambeth on the overall projection for each year

ROLL PROJECTIONS: PRIMARY SCHOOLS BY PLANNING AREA

Area 4 - Streatham Town Centre

Year	4+++	5+	6+	7+	8+	9+	10+	5 to 10+	4 yrs	All	Planning Factor*
2005	457	480	449	470	444	460	425	2,728	457	3,185	-
2006	454	463	473	456	474	449	458	2,773	454	3,227	-
2007	478	454	454	474	447	461	444	2,734	478	3,212	-
2008	503	489	469	452	474	442	457	2,783	503	3,286	3,516
2009	481	510	489	471	450	470	439	2,829	481	3,310	3,542
2010	499	487	508	488	467	447	461	2,858	499	3,357	3,592
2011	504	505	487	504	481	456	443	2,876	504	3,380	3,617
2012	504	511	504	484	494	467	442	2,902	504	3,406	3,644
2013	504	510	509	499	476	479	451	2,924	504	3,428	3,668
2014	505	511	508	501	489	464	461	2,934	505	3,439	3,680
2015	504	511	508	499	491	476	449	2,934	504	3,438	3,679
2016	504	511	508	497	489	478	459	2,942	504	3,446	3,687
2017	504	511	506	495	488	477	461	2,938	504	3,442	3,683
2018	504	510	506	493	486	475	460	2,930	504	3,434	3,674

Area 5 -North Lambeth

Year	4+++	5+	6+	7+	8+	9+	10+	5 to 10+	4 yrs	All	Planning Factor*
2005	609	575	549	573	546	544	499	3,286	609	3,895	-
2006	632	606	576	547	567	535	537	3,368	632	4,000	-
2007	569	626	597	551	537	569	521	3,401	569	3,970	-
2008	638	581	590	577	535	535	556	3,374	638	4,012	4,293
2009	619	640	567	575	566	532	524	3,404	619	4,023	4,305
2010	648	621	625	557	562	564	521	3,450	648	4,098	4,385
2011	654	651	608	610	555	557	555	3,536	654	4,190	4,483
2012	653	657	638	594	598	563	544	3,594	653	4,247	4,544
2013	656	657	644	623	582	597	562	3,665	656	4,321	4,623
2014	658	660	645	630	610	582	586	3,713	658	4,371	4,677
2015	660	663	647	630	616	610	573	3,739	660	4,399	4,707
2016	662	666	651	633	616	617	599	3,782	662	4,444	4,755
2017	666	669	653	637	619	618	608	3,804	666	4,470	4,783
2018	670	674	658	642	622	623	610	3,829	670	4,499	4,814

All Planning Areas

Year	4+++	5+	6+	7+	8+	9+	10+	5 to 10+	4 yrs	All	Planning Factor*
2005	2,664	2,641	2,533	2,560	2,491	2,459	2,388	15,072	2,664	17,736	-
2006	2,679	2,663	2,598	2,509	2,536	2,465	2,420	15,191	2,679	17,870	-
2007	2,650	2,683	2,634	2,546	2,485	2,498	2,415	15,261	2,650	17,911	-
2008	2,806	2,647	2,627	2,608	2,501	2,461	2,446	15,290	2,806	18,096	19,363
2009	2,767	2,809	2,606	2,595	2,575	2,476	2,415	15,476	2,767	18,243	19,520
2010	2,882	2,770	2,770	2,580	2,554	2,546	2,425	15,645	2,882	18,527	19,824
2011	2,918	2,889	2,735	2,739	2,558	2,509	2,498	15,928	2,918	18,846	20,165
2012	2,916	2,928	2,852	2,699	2,702	2,539	2,448	16,168	2,916	19,084	20,420
2013	2,922	2,928	2,891	2,808	2,653	2,668	2,508	16,456	2,922	19,378	20,734
2014	2,928	2,936	2,892	2,842	2,754	2,617	2,623	16,664	2,928	19,592	20,963
2015	2,930	2,946	2,899	2,840	2,783	2,711	2,577	16,756	2,930	19,686	21,064
2016	2,934	2,951	2,909	2,844	2,779	2,743	2,667	16,893	2,934	19,827	21,215
2017	2,938	2,960	2,913	2,849	2,782	2,743	2,708	16,955	2,938	19,893	21,286
2018	2,944	2,967	2,921	2,853	2,785	2,752	2,717	16,995	2,944	19,939	21,335

Source: GLA Projections based on DCSF Schools Census January 2008

* A 7% additional planning factor is applied by Lambeth on the overall projection for each year

DESTINATIONS SURVEY

Destination of Year 11 Leavers from Lambeth Secondary Schools, 2004-2006

Destination	Lambeth					
	2004	% of Total	2005	% of Total	2006	% of Total
Education	1,282	81.2%	1,485	83.3%	1,384	87.0%
Training	34	2.2%	47	2.6%	23	1.4%
Full Time Employment	18	1.1%	31	1.7%	22	1.4%
Part Time and Voluntary	60	3.8%	19	1.1%	15	0.9%
Unemployed	75	4.7%	99	5.6%	68	4.3%
Not Active/Not Available	12	0.8%	21	1.2%	17	1.1%
Moved out of contact	22	1.4%	32	1.8%	23	1.4%
No response	76	4.8%	48	2.7%	39	2.5%
Survey Total	1,579	100.0%	1,782	100.0%	1,591	100.0%

Destination	Central London Connexions Area					
	2004	% of Total	2005	% of Total	2006	% of Total
Education	9,221	80.5%	9,609	82.4%	9,936	83.5%
Training	358	3.1%	397	3.4%	371	3.1%
Full Time Employment	227	2.0%	222	1.9%	194	1.6%
Part Time and Voluntary	127	1.1%	107	0.9%	125	1.0%
Unemployed	752	6.6%	695	6.0%	619	5.2%
Not Active/Not Available	85	0.7%	79	0.7%	108	0.9%
Moved out of contact	295	2.6%	179	1.5%	146	1.2%
No response	385	3.4%	367	3.1%	407	3.4%
Survey Total	11,450	100.0%	11,655	100.0%	11,906	100.0%

Destination of Year 11 Pupils Continuing in Education in 2005 & 2006, by Type of Course

Course Type	Lambeth				Central London Connexions Area			
	2005		2006		2005		2006	
	Cohort	% of Total	Cohort	% of Total	Cohort	% of Total	Cohort	% of Total
GCE A or AS or A2 level	625	42.1%	660	47.7%	4,586	47.7%	5,160	51.9%
GCSE course(s)	39	2.6%	32	2.3%	289	3.0%	373	3.8%
GNVQ Foundation level	66	4.4%	23	1.7%	496	5.2%	278	2.8%
GNVQ Intermediate level	102	6.9%	29	2.1%	544	5.7%	315	3.2%
NVQ Level 1 or equivalent	224	15.1%	232	16.8%	1,136	11.8%	1,722	17.3%
NVQ Level 2 or equivalent	159	10.7%	180	13.0%	1,062	11.1%	1,203	12.1%
NVQ Level 3 or equivalent	11	0.7%	7	0.5%	122	1.3%	48	0.5%
Other courses	259	17.4%	221	16.0%	1,371	14.3%	837	8.4%
Total	1,485	100.0%	1,384	100.0%	9,606	100.0%	9,936	100.0%

The cohorts involved in the survey were all Year 11 pupils present in Central London LA maintained secondary schools at the end of each respective academic year

The Central London Connexions area consists of 7 boroughs: Camden; Islington; Kensington & Chelsea; Lambeth; Southwark; Wandsworth; and Westminster

Source: Central London Connexions Destinations Survey November 2006

SCHOOL BUDGET SHARE

Primary Schools Budget Share, 2008-09

The following information must be taken into account when interpreting this data:

-The primary roll figures are FTEs (Full Time Equivalent) with part-time pupils counted as 0.5 of a pupil, and do not include pupils in special units within certain schools.

-The total budget figures shown **do not** include the following payments: funding for special unit pupils; or National Non-Domestic Rates (NNDR) costs.

-Funding is dependent on a range of factors, such as the number of pupils on roll, the proportion of the school roll who are classified as SEN (special educational need), and the prior attainment profile of a school's pupils.

School	2008/09		
	Pupil Roll (FTE)	Total Budget	Budget per Pupil
Allen Edwards	411.0	£1,863,374	£4,534
Archbishop Sumners CofE	233.0	£1,072,411	£4,603
Ashmole	225.5	£1,021,330	£4,529
Bonneville	404.5	£1,792,262	£4,431
Christ Church CofE (Brixton)	172.0	£866,959	£5,040
Christ Church Streatham CofE	207.0	£885,249	£4,277
Clapham Manor	440.0	£1,991,486	£4,526
Corpus Christi RC	369.0	£1,525,687	£4,135
Crown Lane	407.0	£1,876,252	£4,610
Durand	829.5	£3,556,142	£4,287
Elm Wood	218.0	£994,603	£4,562
Fenstanton	512.5	£2,460,894	£4,802
Glenbrook	380.0	£1,825,921	£4,805
Granton	423.0	£1,849,464	£4,372
Heathbrook	382.5	£1,659,038	£4,337
Henry Cavendish	410.5	£1,751,657	£4,267
Henry Fawcett	352.0	£1,617,848	£4,596
Herbert Morrison	190.0	£898,496	£4,729
Hill Mead	456.0	£2,109,568	£4,626
Hitherfield	424.5	£1,976,889	£4,657
Holy Trinity CofE	414.0	£1,718,076	£4,150
Immanuel CofE	231.5	£1,044,607	£4,512
Jessop	216.0	£983,272	£4,552
Johanna	180.0	£889,806	£4,943
Jubilee	388.0	£1,850,326	£4,769
Julian's	239.0	£987,959	£4,134
Kings Avenue	557.0	£2,597,876	£4,664
Kingswood	426.0	£1,939,844	£4,554
Lark Hall	383.5	£1,830,552	£4,773
Loughborough	465.0	£2,113,886	£4,546
Macaulay CofE	213.5	£931,999	£4,365
Orchard	150.0	£756,429	£5,043
Paxton	228.5	£994,035	£4,350
Reay	233.5	£1,023,252	£4,382
Richard Atkins	376.5	£1,720,789	£4,570
Rosendale	649.5	£2,605,773	£4,012
St Andrew's CofE	196.0	£813,887	£4,152
St Andrew's RC	448.0	£1,857,803	£4,147
St Anne's RC	408.0	£1,809,024	£4,434
St Bede's RC	192.5	£959,149	£4,983

Source: Education Finance - Section 52 Budget Statements financial year 2008/09

SCHOOL BUDGET SHARE

Primary Schools Budget Share, 2008-09

School	2008/09		
	Pupil Roll (FTE)	Total Budget	Budget per Pupil
St Bernadette RC	225.0	£952,507	£4,233
St Helen's RC	294.5	£1,316,530	£4,470
St John The Divine CofE	234.0	£1,022,979	£4,372
St John's CofE	227.0	£1,065,407	£4,693
St Jude's CofE	207.0	£867,696	£4,192
St Leonard's CofE	198.0	£815,428	£4,118
St Luke's CofE	196.0	£848,621	£4,330
St Mark's CofE	189.0	£830,885	£4,396
St Mary's RC	335.0	£1,417,900	£4,233
St Saviour's CofE	209.0	£870,413	£4,165
St Stephen's CofE	206.0	£951,340	£4,618
Stockwell	450.0	£1,995,924	£4,435
Streatham Wells	234.0	£1,017,225	£4,347
Sudbourne	335.0	£1,413,223	£4,219
Sunnyhill	390.0	£1,841,411	£4,722
Telferscot	227.5	£952,992	£4,189
Vauxhall	206.5	£1,058,598	£5,126
Walnut Tree Walk	252.5	£1,160,494	£4,596
Woodmansterne	468.0	£1,986,690	£4,245
Wyvil	481.5	£2,291,444	£4,759

Source: Education Finance - Section 52 Budget Statements financial year 2008/09

Secondary School Budget Share, 2008-09

The following information must be taken into account when interpreting this data:

-All figures shown relate to pupils of compulsory school age only. Post-16 provision is funded separately by the LSC and is not included here.

-The total LA budget figures shown **do not** include payments for National Non-Domestic Rates (NNDR) costs.

-Funding is dependent on a range of factors, such as the number of pupils on roll, the proportion of the school roll who are classified as SEN (special educational need), and the prior attainment profile of a school's pupils.

School	2008/09		
	Pupil Roll (excluding 6th Forms)	Total Budget (LA funding only)	Budget per Pupil
Archbishop Tenison's	490	£2,718,561	£5,548
Bishop Thomas Grant	933	£4,841,258	£5,189
Charles Edward Brooke	751	£4,271,784	£5,688
Dunraven	978	£5,306,097	£5,425
Elmgreen	360	£1,998,686	£5,552
La Retraite	720	£3,752,655	£5,212
Lilian Baylis	624	£3,760,880	£6,027
London Nautical	569	£3,048,056	£5,357
Norwood	714	£4,004,840	£5,609
St Martin-in-the-Fields	716	£3,876,538	£5,414
Stockwell Park	973	£5,730,769	£5,890

Source: Education Finance - Section 52 Budget Statements financial year 2008/09

CLASS SIZE

Numbers of Qualified Teaching Staff, 2003-2008

Qualified Staff	2003	2004	2005	2006	2007	2008
Nursery Schools	26	25	27	29	26	29
Primary Schools	985	1,058	999	1,025	1,054	1,081
Secondary Schools	492	445	542	616	601	606
Special Schools	87	85	81	65	69	64
PRUs	n/a	n/a	n/a	28	24	30
Total	1,590	1,613	1,649	1,763	1,774	1,810

Source: DCSF PLASC 2003 - 2006 & Schools Census January 2007 onwards

Average Class Size - Number of pupils taught by one teacher, 2005-2008

Type of Establishment	2005	2006	2007	2008
Nursery*	21.7	21.7	22.0	21.7
Primary**	26.3	26.6	26.4	26.3
Secondary	21.3	22.1	21.7	20.7

Source: DCSF PLASC 2005-2006 & Schools Census January 2007 onwards

* Nursery classes within primary schools

** Excluding Nursery classes

Primary Schools - Number of pupils in each class, 2008

No of pupils	Taught by one teacher		Taught by two or more teachers		Total Classes*	% of Grand Total
	Number of Nursery Classes	Number of Other Classes	Number of Nursery Classes	Number of Other Classes		
1 - 10 pupils	7	10	0	0	21	2.8%
11-15 pupils	9	9	0	0	20	2.7%
16-20 pupils	11	30	0	3	45	6.0%
21-25 pupils	17	140	1	13	172	22.9%
26-30 pupils	13	398	3	63	477	63.4%
31-35 pupils	4	6	0	4	14	1.9%
36-40 pupils	0	0	0	0	0	0.0%
41+	2	0	1	0	3	0.4%
Grand Total	63	593	5	83	752	100.0%

Source: DCSF Schools Census January 2008

*The total classes section includes 8 classes that do not have a qualified teacher assigned to them

Secondary Schools - Number of pupils in each class, 2008

No of pupils	Number of classes taught by one teacher	Number of classes taught by two or more teachers	Total Classes*	% of Grand Total
1 - 10 pupils	50	0	52	13.2%
11-15 pupils	38	3	41	10.4%
16-20 pupils	62	8	70	17.8%
21-25 pupils	79	5	85	21.6%
26-30 pupils	101	12	117	29.8%
31-35 pupils	21	1	26	6.6%
36-40 pupils	0	2	2	0.5%
41+	0	0	0	0.0%
Grand Total	351	31	393	100.0%

Source: DCSF Schools Census January 2008

*The total classes section includes 11 classes that do not have a qualified teacher assigned to them

PUPIL ABSENCE & ATTENDANCE

Primary School Absence & Attendance Rate 2006 & 2007

School	2005/06			2006/07		
	Authorised Absence	Unauthorised Absence	Attendance Rate	Authorised Absence	Unauthorised Absence	Attendance Rate
Allen Edwards	6.9%	0.8%	92.3%	4.9%	1.0%	94.1%
Archbishop Sumners CofE	3.6%	0.4%	96.0%	3.5%	0.1%	96.4%
Ashmole	6.3%	0.8%	92.9%	4.3%	0.7%	95.0%
Bonneville	5.2%	0.9%	93.9%	5.2%	0.8%	94.0%
Christ Church CofE (Brixton)	3.9%	6.5%	89.6%	3.5%	5.8%	90.7%
Christ Church Streatham CofE	3.7%	0.0%	96.3%	4.0%	0.0%	96.0%
Clapham Manor	4.8%	1.2%	94.0%	4.5%	1.0%	94.5%
Corpus Christi RC	3.1%	0.0%	96.9%	2.3%	0.0%	97.7%
Crown Lane	6.2%	1.3%	92.5%	5.0%	1.4%	93.6%
Durand	5.3%	2.4%	92.3%	5.5%	2.0%	92.5%
Elm Wood	3.9%	3.8%	92.3%	4.6%	3.5%	91.9%
Fenstanton	6.8%	1.8%	91.4%	5.6%	1.8%	92.6%
Glenbrook	7.3%	0.3%	92.4%	4.3%	2.4%	93.3%
Granton	5.6%	0.2%	94.2%	5.8%	0.3%	93.9%
Heathbrook	5.6%	0.3%	94.1%	2.2%	0.3%	97.5%
Henry Cavendish	6.1%	0.2%	93.7%	5.7%	0.4%	93.9%
Henry Fawcett	5.5%	1.8%	92.7%	5.0%	3.1%	91.9%
Herbert Morrison	4.3%	1.6%	94.1%	3.9%	1.7%	94.4%
Hill Mead	6.7%	2.2%	91.1%	7.8%	0.1%	92.1%
Hitherfield	5.8%	0.8%	93.4%	5.4%	0.7%	93.9%
Holy Trinity CofE	4.2%	1.9%	93.9%	3.3%	1.6%	95.1%
Immanuel CofE	5.4%	0.3%	94.3%	3.9%	1.0%	95.1%
Jessop	5.0%	1.0%	94.0%	5.5%	1.1%	93.4%
Johanna	7.0%	0.9%	92.1%	4.8%	1.1%	94.1%
Jubilee	5.8%	0.8%	93.4%	4.3%	1.5%	94.2%
Julians	4.5%	0.1%	95.4%	3.9%	0.4%	95.7%
Kings Avenue	6.9%	2.2%	90.9%	5.8%	2.9%	91.3%
Kingswood	3.9%	1.9%	94.2%	3.2%	3.0%	93.7%
Lark Hall Primary	6.5%	0.5%	93.0%	5.9%	2.2%	91.9%
Loughborough	7.2%	0.2%	92.6%	6.0%	0.2%	93.8%
Macaulay CofE	5.3%	0.0%	94.7%	3.8%	0.0%	96.2%
Orchard	n/a	n/a	n/a	4.5%	1.5%	94.0%
Paxton	4.4%	0.4%	95.2%	4.9%	1.6%	93.5%
Reay	4.6%	0.5%	94.9%	4.0%	0.6%	95.4%
Richard Atkins	5.9%	1.5%	92.6%	4.2%	1.6%	94.2%
Rosendale	5.1%	1.2%	93.7%	4.9%	1.4%	93.7%
St Andrew's CofE	4.5%	0.8%	94.7%	3.5%	2.1%	94.4%
St Andrew's RC	4.8%	0.1%	95.1%	4.0%	0.5%	95.5%
St Anne's RC	4.7%	0.3%	95.0%	4.1%	0.3%	95.6%
St Bede's RC	5.4%	0.0%	94.6%	4.9%	0.0%	95.1%
St Bernadette RC	5.4%	0.0%	94.6%	4.5%	0.1%	95.4%
St Helen's RC	4.0%	0.0%	96.0%	4.0%	0.0%	96.0%
St John The Divine CE	3.3%	0.0%	96.7%	3.7%	0.1%	96.2%
St John's CofE	3.9%	0.6%	95.5%	3.0%	1.1%	95.9%
St Jude's CofE	3.4%	0.7%	95.9%	4.5%	0.0%	95.5%

Sources: DCSF Annual Attendance Returns & DCSF Statistical First Releases

PUPIL ABSENCE & ATTENDANCE

Primary School Absence & Attendance Rate 2006 & 2007

School	2005/06			2006/07		
	Authorised Absence	Unauthorised Absence	Attendance Rate	Authorised Absence	Unauthorised Absence	Attendance Rate
St Leonard's CofE	4.6%	0.5%	94.9%	4.4%	0.4%	95.2%
St Luke's CofE	3.9%	1.0%	95.1%	4.3%	0.6%	95.1%
St Mark's CofE	4.9%	0.9%	94.2%	6.3%	0.7%	93.0%
St Mary's RC	4.2%	0.0%	95.8%	3.6%	0.0%	96.4%
St Saviour's CofE	4.5%	0.6%	94.9%	3.0%	0.7%	96.3%
St Stephen's CofE	5.7%	0.4%	93.9%	4.0%	0.4%	95.6%
Stockwell	6.3%	0.0%	93.7%	6.1%	0.0%	93.9%
Streatham Wells	5.4%	0.2%	94.4%	4.7%	0.2%	95.1%
Sudbourne	4.9%	0.0%	95.1%	4.4%	0.0%	95.6%
Sunnyhill	4.3%	5.9%	89.8%	4.3%	3.9%	91.8%
Telferscot	6.2%	0.0%	93.8%	5.2%	0.0%	94.8%
Vauxhall	7.5%	0.2%	92.3%	5.6%	0.9%	93.5%
Walnut Tree Walk	5.5%	1.2%	93.3%	4.5%	0.3%	95.2%
Woodmansterne	6.1%	0.1%	93.8%	6.2%	0.1%	93.7%
Wyvil	6.3%	0.3%	93.4%	5.0%	0.9%	94.1%
Lambeth	5.4%	1.0%	93.6%	4.7%	1.1%	94.2%
National	5.3%	0.5%	94.2%	4.7%	0.5%	94.8%

Sources: DCSF Annual Attendance Returns & DCSF Statistical First Releases

Secondary School Absence & Attendance Rate 2006 & 2007

School	2005/06			2006/07		
	Authorised Absence	Unauthorised Absence	Attendance Rate	Authorised Absence	Unauthorised Absence	Attendance Rate
Archbishop Tenison's	7.0%	0.9%	92.1%	5.9%	0.4%	93.7%
Bishop Thomas Grant	5.2%	0.2%	94.6%	5.1%	0.1%	94.8%
Charles Edward Brooke	6.4%	0.1%	93.5%	5.4%	0.7%	93.9%
Dunraven	7.1%	1.1%	91.8%	6.1%	1.8%	92.1%
La Retraite	8.2%	0.6%	91.2%	6.8%	0.8%	92.4%
Lambeth Academy	n/a	n/a	n/a	6.6%	1.8%	91.6%
Lilian Baylis	8.3%	0.6%	91.1%	7.2%	0.8%	92.0%
London Nautical	7.3%	0.3%	92.4%	6.4%	0.9%	92.7%
Norwood	9.3%	0.7%	90.0%	8.6%	1.0%	90.4%
St Martin-in-the-Fields	5.4%	0.3%	94.3%	5.2%	0.7%	94.1%
Stockwell Park	7.5%	0.5%	92.0%	6.9%	0.8%	92.3%
Lambeth	6.8%	0.6%	92.6%	6.3%	0.9%	92.8%
National	6.7%	1.2%	92.1%	6.4%	1.4%	92.2%

Source: DCSF Secondary Achievement and Attainment Tables

Pupil Absence & Attendance, Primary & Secondary Schools 2002-2007

Year	Primary			Secondary		
	Authorised Absence	Unauthorised Absence	Attendance Rate	Authorised Absence	Unauthorised Absence	Attendance Rate
2001-2002	5.7%	1.1%	93.2%	7.9%	1.0%	91.1%
2002-2003	5.5%	1.1%	93.4%	7.2%	0.6%	92.2%
2003-2004	5.3%	0.9%	93.8%	7.0%	0.5%	92.5%
2004-2005	5.3%	1.0%	93.7%	6.4%	0.6%	93.0%
2005-2006	5.4%	1.0%	93.6%	6.8%	0.6%	92.6%
2006-2007	4.7%	1.1%	94.2%	6.3%	0.9%	92.8%

Source: DCSF Secondary Achievement and Attainment Tables

Authorised absence includes: sickness, religious observance, work experience, fixed exclusion, authorised annual holidays or other good reason e.g family bereavement

Unauthorised absence includes absence which does not fit into one of the above categories.

PUPIL ABSENCE & ATTENDANCE

Primary School Attendance Rate 2003-2007

School	Annual attendance rate					5 Year Average
	2002/03	2003/04	2004/05	2005/06	2006/07	
Allen Edwards	94.5%	93.0%	93.2%	92.3%	94.1%	93.4%
Archbishop Sumners CofE	94.5%	94.1%	96.0%	96.0%	96.4%	95.4%
Ashmole	94.1%	94.4%	94.5%	92.9%	95.0%	94.2%
Bonneville	93.9%	94.7%	94.4%	93.9%	94.0%	94.2%
Christ Church CofE (Brixton)	94.1%	91.0%	88.0%	89.6%	90.7%	90.7%
Christ Church Streatham	95.6%	95.6%	95.6%	96.3%	96.0%	95.8%
Clapham Manor	93.7%	95.0%	94.6%	94.0%	94.5%	94.4%
Corpus Christi RC	96.6%	97.6%	97.0%	96.9%	97.7%	97.2%
Crown Lane	89.8%	91.7%	90.6%	92.5%	93.6%	91.6%
Durand	92.1%	n/a	92.8%	92.3%	92.5%	n/a
Elm Wood	93.2%	94.0%	95.3%	92.3%	91.9%	93.3%
Fenstanton	90.2%	92.2%	92.0%	91.4%	92.6%	91.7%
Glenbrook	92.9%	93.2%	92.5%	92.4%	93.3%	92.9%
Granton	93.3%	93.6%	94.0%	94.2%	93.9%	93.8%
Heathbrook	94.1%	93.6%	93.6%	94.1%	97.5%	94.6%
Henry Cavendish	93.0%	94.7%	93.8%	93.7%	93.9%	93.8%
Henry Fawcett	93.7%	93.7%	93.4%	92.7%	91.9%	93.1%
Herbert Morrison	94.4%	94.4%	95.0%	94.1%	94.4%	94.5%
Hill Mead	93.1%	88.2%	87.2%	91.1%	92.1%	90.3%
Hitherfield	92.9%	94.8%	94.5%	93.4%	93.9%	93.9%
Holy Trinity CofE	92.8%	94.6%	94.0%	93.9%	95.1%	94.1%
Immanuel CofE	95.6%	95.2%	95.2%	94.3%	95.1%	95.1%
Jessop	93.6%	94.0%	93.1%	94.0%	93.4%	93.6%
Johanna	88.8%	91.9%	90.0%	92.1%	94.1%	91.4%
Jubilee	91.5%	92.9%	91.7%	93.4%	94.2%	92.7%
Julians	93.6%	94.7%	95.0%	95.4%	95.7%	94.9%
Kings Avenue	91.3%	90.2%	91.7%	90.9%	91.3%	91.1%
Kingswood	90.5%	91.8%	93.1%	94.2%	93.7%	92.7%
Lark Hall	93.3%	94.2%	94.4%	93.0%	91.9%	93.4%
Loughborough	92.5%	92.3%	92.1%	92.6%	93.8%	92.7%
Macaulay CofE	95.8%	95.7%	95.4%	94.7%	96.2%	95.6%
Orchard	n/a	n/a	n/a	n/a	94.0%	n/a
Paxton	93.7%	95.1%	94.5%	95.2%	93.5%	94.4%
Reay	95.0%	95.5%	93.9%	94.9%	95.4%	94.9%
Richard Atkins	92.7%	93.6%	93.6%	92.6%	94.2%	93.3%
Rosendale	92.9%	92.5%	92.4%	93.7%	93.7%	93.0%
St Andrew's CofE	94.3%	93.9%	93.9%	94.7%	94.4%	94.2%
St Andrew's RC	95.0%	95.5%	95.1%	95.1%	95.5%	95.2%
St Anne's RC	95.7%	95.2%	95.8%	95.0%	95.6%	95.5%
St Bede's RC	95.0%	95.2%	93.9%	94.6%	95.1%	94.8%
St Bernadette RC	n/a	95.4%	94.8%	94.6%	95.4%	n/a
St Helen's RC	95.7%	96.3%	96.3%	96.0%	96.0%	96.1%
St John The Divine CE	95.1%	96.1%	96.2%	96.7%	96.2%	96.1%
St John's CofE	96.4%	95.5%	96.7%	95.5%	95.9%	96.0%
St Jude's CofE	95.5%	96.5%	96.3%	95.9%	95.5%	95.9%

Source: DCSF Attendance Returns

n/a = not available

PUPIL ABSENCE, ATTENDANCE AND EXCLUSIONS

Primary School Attendance Rate 2003-2007

School	Annual attendance rate					5 Year Average
	2002/03	2003/04	2004/05	2005/06	2006/07	
St Leonard's CofE	95.4%	95.1%	95.4%	94.9%	95.2%	95.2%
St Luke's CofE	95.5%	94.5%	94.4%	95.1%	95.1%	94.9%
St Mark's CofE	95.4%	95.9%	94.8%	94.2%	93.0%	94.7%
St Mary's RC	94.7%	96.8%	96.3%	95.8%	96.4%	96.0%
St Saviour's CofE	96.4%	95.6%	95.6%	94.9%	96.3%	95.8%
St Stephen's CofE	94.8%	95.3%	94.9%	93.9%	95.6%	94.9%
Stockwell	92.9%	92.4%	93.1%	93.7%	93.9%	93.2%
Streatham Wells	94.1%	95.2%	95.5%	94.4%	95.1%	94.9%
Sudbourne	94.7%	95.8%	96.1%	95.1%	95.6%	95.5%
Sunnyhill	83.8%	90.7%	89.4%	89.8%	91.8%	89.1%
Telferscot	94.1%	93.6%	93.9%	93.8%	94.8%	94.0%
Vauxhall	92.9%	90.6%	90.6%	92.3%	93.5%	92.0%
Walnut Tree Walk	93.3%	93.8%	94.1%	93.3%	95.2%	93.9%
Woodmansterne	93.9%	94.4%	94.3%	93.8%	93.7%	94.0%
Wyvil	94.8%	94.6%	94.3%	93.4%	94.1%	94.2%
Primary Total	93.4%	93.8%	93.7%	93.6%	94.2%	93.7%

Sources: DCSF Annual Attendance Returns & DCSF Statistical First Releases

Secondary School Attendance Rate 2003-2007

School	Annual attendance rate					5 Year Average
	2002/03	2003/04	2004/05	2005/06	2006/07	
Archbishop Tenison's	91.9%	90.4%	92.6%	92.1%	93.7%	92.1%
Bishop Thomas Grant	92.8%	93.2%	94.7%	94.6%	94.8%	94.0%
Charles Edward Brooke	90.2%	93.0%	94.2%	93.5%	93.9%	93.0%
Dunraven	92.7%	92.1%	93.1%	91.8%	92.1%	92.4%
La Retraite	94.0%	94.2%	93.8%	91.2%	92.4%	93.1%
Lambeth Academy	n/a	n/a	n/a	n/a	91.6%	n/a
Lilian Baylis	91.5%	91.5%	92.2%	91.1%	92.0%	91.7%
London Nautical	91.9%	92.3%	92.3%	92.4%	92.7%	92.3%
Norwood	90.1%	91.0%	90.7%	90.0%	90.4%	90.4%
St Martin-in-the-Fields	94.4%	94.3%	94.3%	94.3%	94.1%	94.3%
Stockwell Park	91.9%	91.8%	91.9%	92.0%	92.3%	92.0%
Secondary Total	92.2%	92.5%	93.0%	92.6%	92.8%	92.6%

Sources: DCSF Annual Attendance Returns, DCSF SFRs & Secondary School Achievement & Attainment Tables

Permanent Exclusions from School 2002-2007

Type of School	2001-02	2002-03	2003-04	2004-05	2005-06	2006-07
Primary	9	9	15	14	18	8
Secondary	29	22	16	17	9	26
Special	0	2	0	0	2	3
Total	38	33	31	31	29	37

Source: PLASC 2002-2006 & Schools Census 2007 onwards

The mechanism for reporting permanent exclusions for the previous academic year changed in 2008, from an annual to a termly report. This, to some extent, explains the differences between the 2005-06 and 2006-07 figures.

SOCIO-ECONOMIC FACTORS - BY SCHOOL

Primary Schools (% of pupils on roll)

School	DCSF School Census 2008		R&S Pupil Survey 2007*		Mobility 2006/07	
	Eligible for FSM	SEN		English Fluency		
		Statemented	Other SEN	Stages 1-3		Stages 1-4
Allen Edwards	51.4%	0.9%	23.3%	45.8%	58.0%	9.1%
Archbishop Sumners CofE	45.5%	3.0%	40.3%	19.7%	58.8%	8.2%
Ashmole	42.2%	1.7%	23.2%	32.7%	45.0%	8.3%
Bonneville	41.4%	1.9%	19.5%	18.4%	28.6%	8.2%
Christ Church CofE (Brixton)	51.7%	3.5%	32.0%	37.5%	45.0%	16.7%
Christ Church Streatham CofE	33.8%	1.0%	34.8%	16.3%	33.2%	4.5%
Clapham Manor	29.4%	1.3%	20.6%	33.9%	46.4%	5.7%
Corpus Christi RC	11.3%	0.5%	7.5%	22.0%	37.7%	1.0%
Crown Lane	49.5%	1.9%	36.0%	32.7%	44.6%	14.6%
Durand	37.8%	0.3%	26.8%	4.9%	30.2%	6.6%
Elm Wood	33.3%	2.7%	21.2%	33.0%	36.1%	12.3%
Fenstanton	59.3%	2.8%	22.9%	43.1%	49.3%	19.7%
Glenbrook	51.8%	2.3%	35.6%	39.4%	57.1%	11.1%
Granton	39.7%	0.9%	35.9%	26.2%	37.1%	12.5%
Heathbrook	33.3%	0.7%	22.5%	21.2%	33.8%	7.5%
Henry Cavendish	19.0%	1.9%	18.7%	18.5%	21.5%	5.2%
Henry Fawcett	46.4%	1.7%	23.9%	46.0%	52.9%	12.1%
Herbert Morrison	48.2%	1.0%	16.6%	36.9%	55.8%	1.4%
Hill Mead	57.5%	0.7%	29.6%	37.1%	53.0%	12.3%
Hitherfield	39.2%	2.5%	22.9%	42.3%	47.2%	10.4%
Holy Trinity CofE	30.7%	1.4%	18.6%	18.6%	33.3%	6.0%
Immanuel CofE	20.6%	3.1%	16.3%	35.6%	42.8%	8.6%
Jessop	46.3%	0.5%	15.7%	19.3%	22.3%	7.0%
Johanna	42.9%	1.6%	24.5%	53.8%	69.8%	14.4%
Jubilee	29.9%	7.3%	25.1%	50.8%	59.1%	12.1%
Julians	18.0%	1.3%	20.1%	25.2%	31.0%	2.2%
Kings Avenue	43.1%	1.6%	28.5%	42.4%	45.8%	12.8%
Kingswood	47.8%	1.4%	26.5%	21.8%	35.1%	14.9%
Lark Hall Primary	38.7%	5.9%	31.0%	59.1%	68.8%	18.4%
Loughborough	41.3%	1.6%	27.9%	51.1%	53.8%	4.8%
Macaulay CofE	17.3%	3.5%	23.0%	8.7%	21.4%	1.2%
Orchard	67.3%	0.0%	34.0%	94.4%	95.2%	4.8%
Paxton	25.2%	1.7%	18.2%	23.2%	30.3%	6.4%
Reay	20.6%	2.4%	13.3%	22.4%	40.0%	6.8%
Richard Atkins	45.1%	0.8%	13.7%	44.1%	53.1%	12.0%
Rosendale	20.4%	0.9%	15.9%	5.8%	16.9%	10.0%
St Andrew's CofE	26.0%	0.0%	30.6%	27.9%	41.3%	10.4%
St Andrew's RC	11.5%	1.1%	9.8%	39.2%	59.7%	4.5%
St Anne's RC	32.5%	1.4%	25.9%	61.5%	84.6%	6.5%
St Bede's RC	24.2%	0.9%	13.7%	48.9%	62.2%	8.8%
St Bernadette RC	26.7%	3.1%	25.8%	20.5%	55.8%	0.4%
St Helen's RC	28.5%	0.6%	12.5%	82.1%	85.6%	4.0%
St John The Divine CE	32.5%	0.9%	4.3%	51.3%	66.7%	6.8%
St John's CofE	39.1%	1.3%	30.7%	62.7%	65.6%	10.2%
St Jude's CofE	29.5%	1.4%	17.4%	14.7%	20.6%	6.2%

Source: DCSF Schools Census January 2008 & Research and Statistics Unit Pupil Survey 2007

Mobility figures relate to Inward Mobility in the 2006-07 academic year - those pupils who join school at any time other than the standard admission date/s - and are used for funding purposes

*2008 pupil survey data was not available at time of going to print

n/a = not available

SOCIO-ECONOMIC FACTORS - BY SCHOOL

Primary Schools (% of pupils on roll)

School	DCSF School Census 2008		R&S Pupil Survey 2007*		Mobility 2006/07	
	Eligible for FSM	SEN		English Fluency		
		Statemented	Other SEN	Stages 1-3		Stages 1-4
St Leonard's CofE	12.1%	2.5%	19.2%	17.0%	30.4%	3.6%
St Luke's CofE	24.5%	2.6%	18.4%	9.7%	22.4%	4.8%
St Mark's CofE	24.3%	1.6%	29.6%	36.6%	62.9%	10.1%
St Mary's RC	17.5%	0.3%	19.5%	49.6%	67.0%	4.0%
St Saviour's CofE	19.1%	1.0%	19.1%	9.2%	28.2%	10.6%
St Stephen's CofE	43.2%	1.9%	22.3%	43.9%	61.1%	4.1%
Stockwell	38.2%	1.3%	18.2%	46.8%	55.3%	7.2%
Streatham Wells	22.9%	1.9%	16.7%	24.0%	26.7%	7.2%
Sudbourne	22.3%	1.7%	19.5%	24.1%	29.9%	2.7%
Sunnyhill	42.0%	2.2%	26.9%	44.0%	50.3%	14.0%
Telferscot	24.7%	0.4%	25.1%	17.6%	32.4%	9.1%
Vauxhall	73.5%	2.4%	35.1%	56.8%	65.0%	17.6%
Walnut Tree Walk	37.7%	1.5%	18.5%	50.2%	57.5%	5.7%
Woodmansterne	18.6%	1.0%	19.2%	50.3%	53.7%	17.6%
Wyvil	36.6%	5.7%	31.4%	62.5%	70.5%	8.5%
Lambeth	35.0%	1.8%	23.0%	35.2%	46.9%	9.0%

Secondary Schools (% of pupils on roll)

School	DCSF School Census 2008		R&S Pupil Survey 2007*		Mobility 2006/07	
	Eligible for FSM	SEN		English Fluency		
		Statemented	Other SEN	Stages 1-3		Stages 1-4
Archbishop Tenison's	20.5%	4.3%	16.8%	16.9%	43.4%	1.5%
Bishop Thomas Grant	15.4%	3.4%	11.1%	19.0%	51.4%	4.7%
Charles Edward Brooke	37.4%	1.1%	40.9%	29.1%	48.4%	6.3%
Dunraven	26.8%	3.7%	11.4%	7.4%	29.7%	1.1%
Elmgreen	42.8%	5.6%	35.0%	n/a	n/a	n/a
La Retraite	19.3%	0.7%	26.1%	22.0%	63.5%	2.4%
Lambeth Academy	30.0%	3.8%	20.4%	10.0%	31.6%	2.6%
Lilian Baylis	74.8%	3.4%	41.5%	25.0%	64.4%	9.2%
London Nautical	24.2%	5.0%	14.8%	0.5%	21.6%	1.1%
Norwood	40.1%	2.5%	42.4%	15.4%	44.1%	10.5%
St Martin-in-the-Fields	24.7%	2.4%	25.2%	5.0%	20.2%	0.2%
Stockwell Park	74.8%	2.4%	50.2%	24.0%	50.3%	7.5%
Lambeth	35.1%	2.9%	27.2%	16.0%	42.5%	4.4%

Source: DCSF Schools Census January 2008 & Research and Statistics Unit Pupil Survey 2007

Mobility figures relate to Inward Mobility in the 2006-07 academic year - those pupils who join school at any time other than the standard admission date/s - and are used for funding purposes

*2008 pupil survey data was not available at time of going to print

n/a = not available

ETHNIC BACKGROUND OF PUPILS

Ethnic Background by Type of School 2008

Ethnic Background	Nursery		Primary		Secondary		Special		Lambeth	
	No.	%	No.	%	No.	%	No.	%	No.	%
African	122	24.9%	4,846	23.9%	2,296	25.1%	106	23.1%	7,370	24.3%
Any Other Group	18	3.7%	837	4.1%	372	4.1%	12	2.6%	1,239	4.1%
Asian Other	4	0.8%	225	1.1%	127	1.4%	2	0.4%	358	1.2%
Bangladeshi	9	1.8%	326	1.6%	174	1.9%	2	0.4%	511	1.7%
Black Other	22	4.5%	888	4.4%	460	5.0%	18	3.9%	1,388	4.6%
Caribbean	80	16.4%	3,770	18.6%	1,810	19.8%	90	19.7%	5,750	18.9%
Chinese	2	0.4%	170	0.8%	132	1.4%	8	1.7%	312	1.0%
Greek	0	0.0%	13	0.1%	22	0.2%	0	0.0%	35	0.1%
Gypsy/Roma	0	0.0%	18	0.1%	12	0.1%	2	0.4%	32	0.1%
Indian	0	0.0%	150	0.7%	77	0.8%	5	1.1%	232	0.8%
Mixed Other	38	7.8%	928	4.6%	399	4.4%	16	3.5%	1,381	4.5%
Mixed White/Asian	2	0.4%	175	0.9%	52	0.6%	3	0.7%	232	0.8%
Mixed White/Black African	10	2.0%	302	1.5%	99	1.1%	7	1.5%	418	1.4%
Mixed White/Black Caribbean	24	4.9%	946	4.7%	352	3.9%	18	3.9%	1,340	4.4%
Pakistani	2	0.4%	269	1.3%	55	0.6%	9	2.0%	335	1.1%
Portuguese	11	2.2%	1,091	5.4%	429	4.7%	25	5.5%	1,556	5.1%
Turkish	3	0.6%	81	0.4%	37	0.4%	2	0.4%	123	0.4%
Vietnamese	0	0.0%	60	0.3%	50	0.5%	1	0.2%	111	0.4%
White British	93	19.0%	3,314	16.3%	1,561	17.1%	107	23.4%	5,075	16.7%
White Irish	2	0.4%	110	0.5%	74	0.8%	6	1.3%	192	0.6%
White Other	22	4.5%	1,509	7.4%	507	5.5%	10	2.2%	2,048	6.7%

Ethnic Background of Primary School Pupils 1999-2008 (%)

Ethnic Background	1999	2000	2001	2002	2003	2004	2005	2006	2007	2008
African	20.3%	21.6%	22.3%	22.5%	22.5%	22.8%	23.3%	23.9%	23.4%	23.9%
Any Other Group*	n/a	n/a	n/a	n/a	0.0	2.6%	2.8%	3.1%	3.8%	4.1%
Asian Other*	n/a	n/a	n/a	n/a	0.0	0.8%	1.0%	0.9%	1.0%	1.1%
Bangladeshi	1.7%	1.8%	1.8%	1.8%	1.8%	1.8%	1.8%	1.8%	1.6%	1.6%
Black Other	11.4%	11.2%	11.7%	11.9%	4.4%	4.4%	4.2%	4.5%	5.1%	4.4%
Caribbean	22.1%	22.5%	22.5%	22.9%	21.1%	20.6%	20.3%	19.5%	18.7%	18.6%
Chinese	0.9%	0.9%	0.8%	0.8%	0.8%	0.8%	0.8%	0.7%	0.8%	0.8%
Greek	0.3%	0.3%	0.2%	0.2%	0.1%	0.1%	0.2%	0.2%	0.1%	0.1%
Gypsy/Roma*	n/a	n/a	n/a	n/a	0.0	0.2%	0.1%	0.1%	0.1%	0.1%
Indian	1.8%	1.6%	1.6%	1.4%	1.0%	0.9%	0.8%	0.8%	0.8%	0.7%
Mixed Other*	n/a	n/a	n/a	n/a	0.0	3.7%	3.9%	4.0%	4.4%	4.6%
Mixed White/Asian*	n/a	n/a	n/a	n/a	0.0	0.7%	0.7%	0.8%	0.8%	0.9%
Mixed White/Black African*	n/a	n/a	n/a	n/a	0.0	1.4%	1.5%	1.5%	1.4%	1.5%
Mixed White/Black Caribbean*	n/a	n/a	n/a	n/a	0.0	4.9%	4.9%	5.0%	4.8%	4.7%
Pakistani	1.4%	1.3%	1.3%	1.4%	1.2%	1.1%	1.1%	1.3%	1.2%	1.3%
Portuguese	4.3%	4.5%	4.6%	4.9%	4.8%	5.4%	5.5%	6.1%	6.1%	5.4%
Turkish	0.7%	0.7%	0.6%	0.6%	0.6%	0.6%	0.6%	0.6%	0.5%	0.4%
Vietnamese	1.0%	0.8%	0.8%	0.7%	0.5%	0.5%	0.4%	0.3%	0.3%	0.3%
White British	26.5%	24.7%	23.2%	22.2%	19.7%	18.8%	18.3%	18.6%	16.9%	16.3%
White Irish	1.1%	1.1%	1.1%	1.0%	1.0%	0.9%	0.7%	0.8%	0.6%	0.5%
White Other	6.5%	7.0%	7.3%	7.6%	5.6%	5.9%	6.2%	5.5%	6.2%	7.4%

Source: Research and Statistics Unit Pupil Survey 1999-2006 & DCSF Schools Census January 2007 onwards

Totals may not equate to 100% due to the exclusion of the 'Not Known' and 'Refused' categories

*Additional categories from 2003

ETHNIC BACKGROUND OF PUPILS

Ethnic Background of Secondary School Pupils 1999-2008 (%)

Ethnic Background	1999	2000	2001	2002	2003	2004	2005	2006	2007	2008
African	20.3%	20.6%	22.2%	23.9%	23.9%	24.7%	25.1%	25.7%	23.0%	25.1%
Any Other Group*	n/a	n/a	n/a	n/a	2.5%	2.1%	2.8%	3.3%	3.7%	4.1%
Asian Other*	n/a	n/a	n/a	n/a	0.5%	0.6%	0.9%	1.0%	1.4%	1.4%
Bangladeshi	2.3%	2.3%	2.1%	2.0%	1.9%	1.8%	1.8%	1.8%	1.7%	1.9%
Black Other	9.0%	10.2%	8.9%	9.6%	6.5%	6.5%	6.5%	5.8%	8.0%	5.0%
Caribbean	23.7%	23.2%	23.5%	23.0%	23.0%	22.2%	20.8%	20.5%	20.0%	19.8%
Chinese	1.6%	1.5%	1.6%	1.4%	1.4%	1.5%	1.4%	1.5%	1.5%	1.4%
Greek	0.3%	0.4%	0.3%	0.3%	0.3%	0.3%	0.1%	0.1%	0.2%	0.2%
Gypsy/Roma*	n/a	n/a	n/a	n/a	0.1%	0.1%	0.1%	0.2%	0.2%	0.1%
Indian	2.1%	1.6%	1.4%	1.7%	1.2%	1.0%	1.0%	0.9%	0.8%	0.8%
Mixed Other*	n/a	n/a	n/a	n/a	1.7%	2.3%	2.9%	3.4%	4.2%	4.4%
Mixed White/Asian*	n/a	n/a	n/a	n/a	0.5%	0.4%	0.4%	0.3%	0.4%	0.6%
Mixed White/Black African*	n/a	n/a	n/a	n/a	0.6%	0.7%	0.8%	0.7%	1.0%	1.1%
Mixed White/Black Caribbean*	n/a	n/a	n/a	n/a	2.5%	2.7%	2.9%	3.4%	3.7%	3.9%
Pakistani	0.8%	0.9%	1.2%	1.0%	1.0%	0.9%	0.9%	0.8%	0.7%	0.6%
Portuguese	4.0%	4.5%	4.9%	4.6%	3.9%	3.8%	4.3%	5.0%	4.9%	4.7%
Turkish	0.5%	0.5%	0.6%	0.6%	0.5%	0.6%	0.4%	0.4%	0.3%	0.4%
Vietnamese	1.1%	1.0%	0.8%	0.7%	0.5%	0.6%	0.4%	0.5%	0.5%	0.5%
White British	25.2%	23.8%	23.3%	21.5%	20.6%	20.0%	19.1%	18.7%	17.6%	17.1%
White Irish	2.4%	2.3%	2.0%	1.7%	1.1%	0.8%	0.9%	0.9%	0.8%	0.8%
White Other	5.8%	6.8%	6.9%	7.9%	5.7%	5.9%	5.9%	4.8%	5.2%	5.5%

Ethnic Background of All Pupils 1999-2008 (%)

Ethnic Background	1999	2000	2001	2002	2003	2004	2005	2006	2007	2008
African	20.2%	21.2%	22.1%	22.8%	22.6%	23.2%	23.6%	24.1%	23.3%	24.3%
Any Other Group*	n/a	n/a	n/a	n/a	2.5%	2.5%	2.9%	3.2%	3.8%	4.1%
Asian Other*	n/a	n/a	n/a	n/a	0.8%	0.8%	0.9%	0.9%	1.1%	1.2%
Bangladeshi	1.8%	1.9%	1.8%	1.8%	1.8%	1.8%	1.8%	1.8%	1.6%	1.7%
Black Other	10.8%	11.0%	11.0%	11.3%	4.9%	4.9%	4.9%	4.8%	5.8%	4.6%
Caribbean	22.5%	22.6%	22.8%	23.0%	21.6%	21.1%	20.3%	19.6%	19.1%	18.9%
Chinese	1.1%	1.1%	1.0%	1.0%	1.0%	1.0%	1.0%	1.0%	1.0%	1.0%
Greek	0.3%	0.3%	0.2%	0.2%	0.2%	0.2%	0.1%	0.2%	0.1%	0.1%
Gypsy/Roma*	n/a	n/a	n/a	n/a	0.1%	0.1%	0.1%	0.1%	0.2%	0.1%
Indian	1.8%	1.6%	1.5%	1.5%	1.0%	0.9%	0.9%	0.8%	0.8%	0.8%
Mixed Other*	n/a	n/a	n/a	n/a	3.0%	3.4%	3.7%	3.9%	4.4%	4.5%
Mixed White/Asian*	n/a	n/a	n/a	n/a	0.6%	0.6%	0.7%	0.7%	0.7%	0.8%
Mixed White/Black African*	n/a	n/a	n/a	n/a	1.1%	1.2%	1.3%	1.3%	1.3%	1.4%
Mixed White/Black Caribbean*	n/a	n/a	n/a	n/a	4.4%	4.4%	4.4%	4.5%	4.5%	4.4%
Pakistani	1.2%	1.2%	1.3%	1.2%	1.1%	1.1%	1.1%	1.1%	1.1%	1.1%
Portuguese	4.1%	4.4%	4.6%	4.8%	4.5%	4.9%	5.1%	5.7%	5.6%	5.1%
Turkish	0.7%	0.6%	0.6%	0.6%	0.6%	0.6%	0.5%	0.5%	0.4%	0.4%
Vietnamese	1.0%	0.9%	0.8%	0.7%	0.5%	0.5%	0.4%	0.4%	0.3%	0.4%
White British	26.5%	24.9%	23.6%	22.4%	20.2%	19.3%	18.7%	18.6%	17.2%	16.7%
White Irish	1.5%	1.4%	1.3%	1.2%	1.0%	0.9%	0.8%	0.8%	0.7%	0.6%
White Other	6.2%	6.8%	7.2%	7.6%	5.6%	5.9%	6.1%	5.2%	5.8%	6.7%

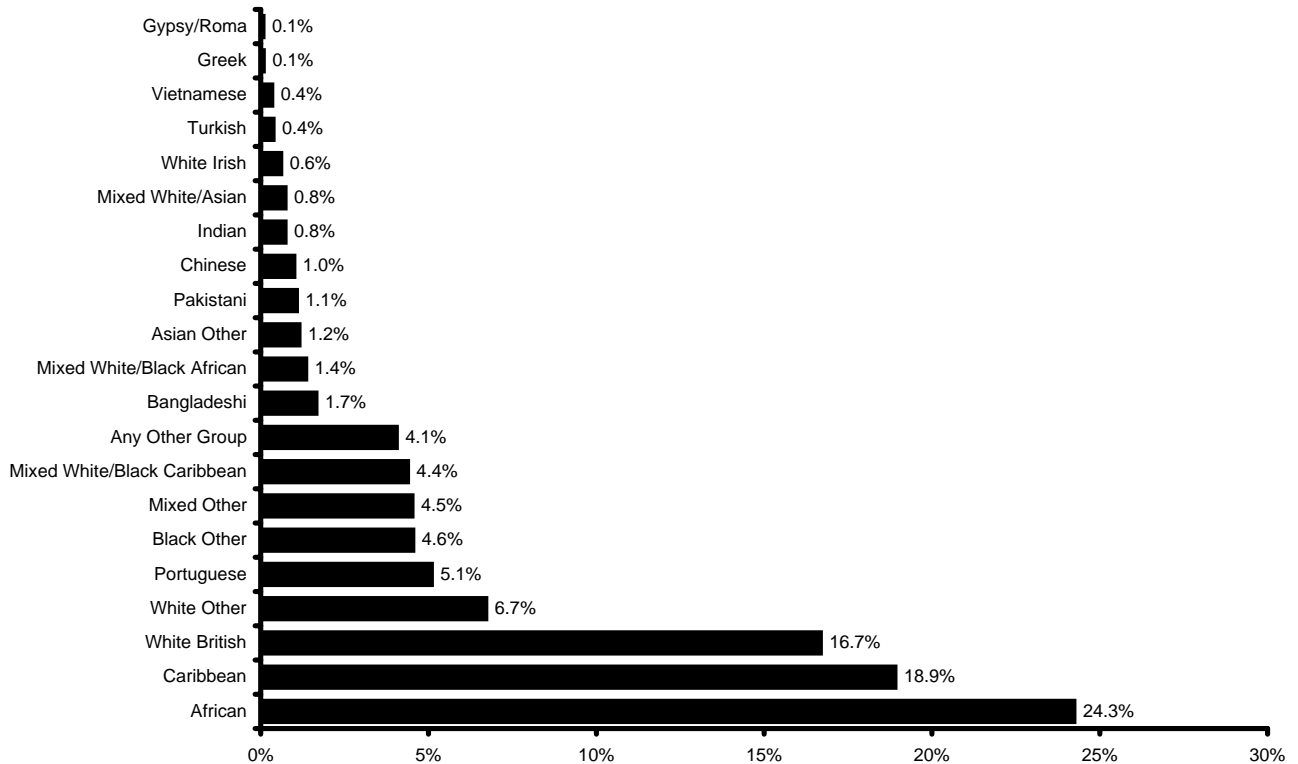
Source: Research and Statistics Unit Pupil Survey 1999-2006 & DCSF Schools Census January 2007 onwards

Totals may not equate to 100% due to the exclusion of the 'Not Known' and 'Refused' categories

*Additional categories from 2003

ETHNIC BACKGROUND OF PUPILS

Ethnic Background of All Pupils, 2008 (%)



Social Characteristics of Pupils (%)

Type of Establishment	DCSF Schools Census 2008	R&S Pupil Survey 2007*		
	Eligible for FSM	English Fluency Stages 1-3	English Fluency Stages 1-4	English Only
Nursery	17.0%	41.7%	45.6%	54.2%
Primary	35.0%	35.2%	46.9%	53.0%
Secondary	35.1%	16.0%	42.5%	57.4%
Special	64.0%	33.4%	36.0%	64.0%
PRUs	28.8%	1.0%	11.0%	89.0%
Total	35.2%	29.6%	45.3%	54.6%

Source: DCSF Schools Census January 2008 & Research & Statistics Pupil Survey 2007

Fluency figures may not equate to 100% due to a small proportion of pupils for whom stage of English is unknown

*2008 pupil survey data was not available at time of going to print

ENGLISH FLUENCY & LANGUAGES SPOKEN

Stages of English Fluency in Primary Schools, 1995-2007

Year	Bilingual				English Only
	Stage 1	Stage 2	Stage 3	Stage 4	
1995	7.1%	7.4%	6.1%	7.0%	72.4%
1996	9.2%	8.1%	6.2%	5.9%	70.6%
1997	10.4%	9.0%	6.3%	6.2%	68.1%
1998	13.0%	9.4%	6.7%	5.1%	65.1%
1999	13.1%	10.0%	7.0%	4.6%	64.9%
2000	11.3%	9.7%	7.9%	8.8%	62.1%
2001	7.7%	11.7%	10.5%	9.3%	60.8%
2002	6.4%	11.8%	11.1%	10.7%	59.9%
2003	7.7%	12.5%	11.4%	9.7%	58.7%
2004	6.9%	12.0%	12.5%	11.1%	57.3%
2005	6.9%	12.5%	12.7%	11.0%	56.9%
2006	7.0%	13.1%	13.1%	11.8%	55.0%
2007	7.3%	13.9%	14.0%	11.7%	53.0%
% change 1995-2007	0.2%	6.5%	7.9%	4.7%	-19.4%

Stages of English Fluency in Secondary Schools, 1995-2007

Year	Bilingual				English Only
	Stage 1	Stage 2	Stage 3	Stage 4	
1995	3.7%	11.0%	15.0%	8.4%	61.9%
1996	3.8%	13.7%	15.5%	8.8%	58.2%
1997	5.1%	13.3%	15.9%	6.4%	59.3%
1998	3.8%	7.5%	11.0%	9.8%	65.9%
1999	3.7%	7.4%	9.1%	13.1%	64.2%
2000	3.7%	7.8%	9.3%	12.0%	65.8%
2001	1.1%	5.6%	12.4%	15.8%	63.9%
2002	1.2%	3.7%	11.3%	20.4%	63.2%
2003	1.1%	4.9%	12.3%	18.4%	63.3%
2004	1.5%	3.9%	11.7%	21.0%	61.3%
2005	2.0%	4.0%	11.2%	22.2%	58.9%
2006	1.3%	3.6%	11.6%	24.8%	58.6%
2007	1.2%	3.3%	11.5%	26.5%	57.4%
% change 1995-2007	-2.5%	-7.7%	-3.5%	18.1%	-4.5%

Source: Research and Statistics Unit Pupil Survey

Main Languages Spoken by all Lambeth Pupils (%), 1992 & 2007

Language	1992	2007	% Change
English	76.0	54.1	-21.9
Portuguese	1.5	6.8	5.3
Yoruba	3.2	5.1	1.9
Spanish	0.9	3.9	3.0
French	1.0	3.6	2.6
Akan/Twi/ Fante/Asante	2.0	3.3	1.3
Somali	0.1	3.3	3.2
Arabic	1.2	1.9	0.7
Bengali	1.9	1.7	-0.2
Polish	0.1	1.2	1.1

Source: Research and Statistics Unit Pupil Survey

Only the top ten languages spoken by pupils in the 2007 survey are represented in the table above

LANGUAGES SPOKEN

Main Languages Spoken in Primary Schools 1992 & 2000-2007

Language	1992		2000		2001		2002		2003		2004		2005		2006		2007	
	No	%	No	%	No	%	No	%	No	%	No	%	No	%	No	%	No	%
English	14,038	76.7	12,282	62.1	12,152	60.8	11,891	59.7	11,685	58.7	11,391	57.2	11,291	56.9	11,038	55.0	10,585	52.6
Portuguese	278	1.5	1002	5.1	1,048	5.2	1,109	5.6	1,172	5.9	1,308	6.6	1,366	6.9	1,452	7.2	1,470	7.3
Yoruba	569	3.1	1,387	7.0	1,436	7.2	1,326	6.7	1,247	6.3	1,116	5.6	1,011	5.1	1,003	5.0	962	4.8
Spanish	176	1.0	465	2.4	517	2.6	572	2.9	621	3.1	682	3.4	699	3.5	746	3.7	838	4.2
French	176	1.0	487	2.5	574	2.9	619	3.1	677	3.4	747	3.8	761	3.8	817	4.1	804	4.0
Somali	19	0.1	153	0.8	169	0.8	249	1.3	346	1.7	448	2.3	569	2.9	659	3.3	749	3.7
Akan/Twi/ Fante/Asante	251	1.4	738	3.7	732	3.7	708	3.6	700	3.5	706	3.6	659	3.3	654	3.3	709	3.6
Arabic	218	1.2	297	1.5	305	1.5	311	1.6	321	1.6	335	1.7	344	1.7	390	1.9	437	2.2
Bengali	328	1.8	349	1.8	359	1.8	369	1.9	385	1.9	380	1.9	372	1.9	372	1.9	352	1.7
Polish	25	0.1	71	0.4	77	0.4	72	0.4	105	0.5	131	0.7	149	0.8	205	1.0	281	1.4
Urdu	246	1.3	226	1.1	232	1.2	233	1.2	218	1.1	208	1.0	207	1.0	231	1.2	238	1.2
Ibo	227	1.2	210	1.1	206	1.0	213	1.1	202	1.0	171	0.9	177	0.9	211	1.1	207	1.0
Tigrinya	39	0.2	109	0.6	104	0.5	110	0.6	122	0.6	145	0.7	172	0.9	198	1.0	191	0.9
Chinese	314	1.7	239	1.2	221	1.1	207	1.0	198	1.0	184	0.9	169	0.9	160	0.8	169	0.8
Italian	104	0.6	130	0.7	132	0.7	131	0.7	137	0.7	134	0.7	150	0.8	167	0.8	165	0.8
Albanian	n/a	n/a	90	0.4	84	0.4	96	0.5	120	0.6	124	0.6	127	0.6	125	0.6	136	0.7
Lingala	7	0.0	43	0.2	50	0.3	62	0.3	65	0.3	78	0.4	93	0.5	97	0.5	133	0.7
Turkish	175	1.0	163	0.8	165	0.8	140	0.7	134	0.7	138	0.7	131	0.7	128	0.6	125	0.6
Gujerati	259	1.4	144	0.7	132	0.7	113	0.6	103	0.5	93	0.5	86	0.4	80	0.4	82	0.4
Panjabi	104	0.6	79	0.4	89	0.4	78	0.4	74	0.4	72	0.4	67	0.3	78	0.4	80	0.4
Luganda	17	0.1	50	0.3	55	0.3	56	0.3	60	0.3	66	0.3	65	0.3	72	0.4	78	0.4
Ga	69	0.4	154	0.8	135	0.7	139	0.7	125	0.6	109	0.5	110	0.6	103	0.5	75	0.4
Krio	4	0.0	11	0.1	58	0.3	53	0.3	57	0.3	61	0.3	61	0.3	55	0.3	64	0.3
Vietnamese	121	0.7	105	0.5	105	0.5	89	0.4	92	0.5	94	0.5	83	0.4	73	0.4	62	0.3
German	28	0.2	26	0.1	31	0.2	39	0.2	35	0.2	45	0.2	43	0.2	50	0.2	58	0.3
Kurdish	14	0.1	26	0.1	26	0.1	28	0.1	31	0.2	27	0.1	33	0.2	38	0.2	52	0.3
Swahili	16	0.1	36	0.2	48	0.2	45	0.2	38	0.2	50	0.3	54	0.3	66	0.3	48	0.2
Tagalog	29	0.2	23	0.1	33	0.2	29	0.1	41	0.2	47	0.2	48	0.2	46	0.2	45	0.2
Serbo-Croat	2	0.0	36	0.2	30	0.2	41	0.2	40	0.2	35	0.2	42	0.2	33	0.2	36	0.2
Hindi	80	0.4	46	0.2	41	0.2	36	0.2	30	0.2	22	0.1	21	0.1	26	0.1	32	0.2
Greek	91	0.5	73	0.4	57	0.3	46	0.2	38	0.2	43	0.2	32	0.2	32	0.2	28	0.1
Urhobo	8	0.0	22	0.1	20	0.1	16	0.1	22	0.1	17	0.1	17	0.1	13	0.1	13	0.1
Others*	265	1.4	510	2.6	565	2.8	614	3.1	671	3.4	682	3.4	597	3.0	648	3.2	822	4.1

Source: Research and Statistics Unit Pupil Survey

* Other category includes: Acholi, Afrikaans, Amharic, Armaic, Armenian, Assamese, Ateso, Baluchi, Bansa, Basque, Bayangi, Bemba, Bende, Berber, Bini, Bulgarian, Buli, Burmese, Czech, Dagbane, Danish, Dari, Dhophadola, Dinka, Dioula, Dutch, Edo, Effutu, Efik, Eleme, Eriterina, Esan, Etche, Ewe, Fang, Finnish, Flemish, Frafra, Fulani, Gaelic, Hausa, Hebrew, Hungarian, Icaray, Iiocano, Ijo, Ikwerre, Indonesian, Ishan, Isoko, Itsekiri, Japanese, Kalabari, Kikuyu, Kinyarwanda, Konkani, Korean, Krobo, Kutchi, Latvian, Limba, Lithuanian, Lozi, Luo, Lusoga, Lwo, Malay, Malayalam, Maltese, Mandego, Mandingo, Mandinka, Memon, Mende, Moldavian, Mongolian, Ndebele, Norwegian, Nyanga, Okpe, Okrika, Pahari, Pampangan, Pashto, Patua, Persian, Romanian, Rundi, Runyankore, Russian, Saho, Shona, Sindhi, Singhalese, Slovak, Swedish, Tamil, Tangoa, Temne, Thai, Tigre, Tiv, Tonga, Tswana, Ukani, Ukrainian, Unclassified, Welsh, Wolof, Zulu.

LANGUAGES SPOKEN

Main Languages Spoken in Secondary Schools 1992 & 2000-2007

Language	1992		2000		2001		2002		2003		2004		2005		2006		2007	
	No	%	No	%	No	%	No	%	No	%	No	%	No	%	No	%	No	%
English	3,814	72.1	4,661	65.8	4,596	64.0	4,615	63.2	4,692	63.4	4,788	61.4	4,765	58.9	4,723	58.6	4,950	56.7
Yoruba	199	3.7	391	5.5	424	5.9	481	6.6	472	6.4	536	6.9	533	6.6	535	6.6	527	6
Portuguese	91	1.7	348	4.9	391	5.4	379	5.2	367	5.0	382	4.9	432	5.3	479	5.9	526	6
Spanish	51	1.0	191	2.7	199	2.8	225	3.1	252	3.4	273	3.5	284	3.5	305	3.8	307	3.5
Akan/Twi/ Fante/Asante	102	1.9	207	2.9	219	3.0	252	3.4	257	3.5	269	3.5	264	3.3	236	2.9	269	3.1
French	59	1.1	118	1.7	140	1.9	161	2.2	181	2.4	211	2.7	233	2.9	238	3	231	2.6
Somali	12	0.2	60	0.8	54	0.8	57	0.8	55	0.7	91	1.2	119	1.5	151	1.9	202	2.3
Bengali	137	2.6	155	2.2	136	1.9	128	1.8	122	1.6	135	1.7	141	1.7	139	1.7	152	1.7
Chinese	166	3.1	133	1.9	113	1.6	117	1.6	108	1.5	116	1.5	122	1.5	134	1.7	132	1.5
Arabic	65	1.2	63	0.9	68	0.9	75	1.0	90	1.2	103	1.3	102	1.3	107	1.3	118	1.4
Polish	9	0.2	16	0.2	12	0.2	28	0.4	29	0.4	27	0.3	39	0.5	56	0.7	68	0.8
Ibo	49	0.9	52	0.7	60	0.8	71	1.0	58	0.8	67	0.9	75	0.9	75	0.9	65	0.7
Urdu	62	1.2	58	0.8	73	1.0	66	0.9	66	0.9	65	0.8	68	0.8	62	0.8	63	0.7
Turkish	58	1.1	35	0.5	39	0.5	45	0.6	46	0.6	51	0.7	50	0.6	49	0.6	54	0.6
Albanian	n/a	n/a	12	0.1	19	0.3	26	0.4	28	0.4	37	0.5	36	0.4	46	0.6	47	0.5
Ga	22	0.4	43	0.6	56	0.8	58	0.8	62	0.8	53	0.7	58	0.7	47	0.6	45	0.5
Vietnamese	49	0.9	28	0.4	33	0.5	33	0.5	35	0.5	43	0.6	43	0.5	44	0.5	44	0.5
Krio	5	0.1	6	0.1	52	0.7	45	0.6	44	0.6	43	0.6	58	0.7	45	0.6	43	0.5
Tigrinya	27	0.5	47	0.7	39	0.5	30	0.4	26	0.4	25	0.3	31	0.4	37	0.5	41	0.5
Lingala	3	0.1	31	0.4	20	0.3	21	0.3	14	0.2	22	0.3	24	0.3	32	0.4	40	0.5
Italian	44	0.8	29	0.4	35	0.5	35	0.5	33	0.4	36	0.5	34	0.4	35	0.4	37	0.4
Greek	38	0.7	28	0.4	26	0.4	26	0.4	24	0.3	26	0.3	22	0.3	25	0.3	32	0.4
Tagalog	12	0.2	15	0.2	20	0.3	18	0.2	23	0.3	27	0.3	26	0.3	29	0.4	32	0.4
Luganda	3	0.1	17	0.2	24	0.3	27	0.4	29	0.4	38	0.5	43	0.5	27	0.3	31	0.4
Swahili	7	0.1	26	0.4	28	0.4	22	0.3	26	0.4	35	0.4	29	0.4	22	0.3	27	0.3
Gujerati	54	1.0	30	0.4	35	0.5	35	0.5	33	0.4	30	0.4	30	0.4	25	0.3	22	0.3
Hindi	20	0.4	27	0.4	23	0.3	25	0.3	29	0.4	28	0.4	27	0.3	24	0.3	20	0.2
Panjabi	18	0.3	16	0.2	12	0.2	16	0.2	14	0.2	10	0.1	13	0.2	12	0.1	16	0.2
Serbo-Croat	0	0.0	5	0.1	2	0.0	6	0.1	6	0.1	12	0.2	9	0.1	6	0.1	14	0.2
Kurdish	3	0.1	5	0.1	8	0.1	12	0.2	5	0.1	8	0.1	11	0.1	13	0.2	14	0.2
German	7	0.1	3	0.0	2	0.0	4	0.1	4	0.1	9	0.1	7	0.1	13	0.2	13	0.1
Urhobo	4	0.1	10	0.1	8	0.1	6	0.1	7	0.1	5	0.1	5	0.1	3	0	3	0
Others*	97	1.8	224	3.2	220	3.1	157	2.2	166	2.2	199	2.6	210	2.6	280	3.5	604	6.9

Source: Research and Statistics Unit Pupil Survey

* Other category includes: Acholi, Afrikaans, Amharic, Armaic, Armenian, Assamese, Ateso, Baluchi, Bansa, Basque, Bayangi, Bemba, Bende, Berber, Bini, Bulgarian, Buli, Burmese, Czech, Dagbane, Danish, Dari, Dhophadola, Dinka, Dioula, Dutch, Edo, Effutu, Efik, Eleme, Eriterina, Esan, Etche, Ewe, Fang, Finnish, Flemish, Frafra, Fulani, Gaelic, Hausa, Hebrew, Hungarian, Icaray, Iiocano, Ijo, Ikwerre, Indonesian, Ishan, Isoko, Itsekiri, Japanese, Kalabari, Kikuyu, Kinyarwanda, Konkani, Korean, Krobo, Kutchi, Latvian, Limba, Lithuanian, Lozi, Luo, Lusoga, Lwo, Malay, Malayalam, Maltese, Mandego, Mandingo, Mandinka, Memon, Mende, Moldavian, Mongolian, Ndebele, Norwegian, Nyanga, Okpe, Okrika, Pahari, Pampangan, Pashto, Patua, Persian, Romanian, Rundi, Runyankore, Russian, Saho, Shona, Sindhi, Singhalese, Slovak, Swedish, Tamil, Tanga, Temne, Thai, Tigre, Tiv, Tonga, Tswana, Ukani, Ukrainian, Unclassified, Welsh, Wolof, Zulu.

LANGUAGES SPOKEN

Main Languages Spoken in All Schools 1992 & 2000-2007

Language	1992		2000		2001		2002		2003		2004		2005		2006		2007	
	No	%	No	%	No	%	No	%	No	%	No	%	No	%	No	%	No	%
English	18,937	76.0	17,778	63.3	17,616	62.1	17,384	61.3	17,204	60.3	16,939	58.8	16,666	57.7	16,432	56.3	16,180	54.1
Portuguese	377	1.5	1,386	4.9	1,484	5.2	1,531	5.4	1,586	5.6	1,725	6.0	1,832	6.3	1,969	6.7	2,033	6.8
Yoruba	800	3.2	1,840	6.6	1,909	6.7	1,846	6.5	1,754	6.2	1,689	5.9	1,578	5.5	1,578	5.4	1,530	5.1
Spanish	233	0.9	672	2.4	737	2.6	815	2.9	899	3.2	977	3.4	1,015	3.5	1,096	3.8	1,172	3.9
French	245	1.0	624	2.2	742	2.6	802	2.8	889	3.1	993	3.4	1,019	3.5	1,082	3.7	1,072	3.6
Akan/Twi/ Fante/Asante	366	2.0	981	3.5	986	3.5	990	3.5	995	3.5	1,013	3.6	960	3.3	932	3.2	1,014	3.3
Somali	32	0.1	222	0.8	236	0.8	327	1.2	423	1.5	561	1.9	707	2.4	835	2.9	982	3.3
Arabic	295	1.2	374	1.3	394	1.4	408	1.4	428	1.5	458	1.6	463	1.6	517	1.8	577	1.9
Bengali	479	1.9	519	1.8	509	1.8	515	1.8	522	1.8	527	1.8	526	1.8	522	1.8	514	1.7
Polish	34	0.1	89	0.3	91	0.3	104	0.4	136	0.5	165	0.6	194	0.7	265	0.9	351	1.2
Chinese	489	2.0	383	1.4	342	1.2	337	1.2	320	1.1	312	1.1	303	1.0	307	1.1	314	1.1
Urdu	322	1.3	293	1.0	310	1.1	304	1.1	294	1.0	283	1.0	288	1.0	305	1.0	311	1.0
Ibo	291	1.2	275	1.0	277	1.0	292	1.0	266	0.9	245	0.9	257	0.9	291	1.0	278	0.9
Tigrinya	66	0.3	166	0.6	153	0.5	147	0.5	162	0.6	181	0.6	214	0.7	245	0.8	244	0.8
Italian	153	0.6	166	0.6	172	0.6	172	0.6	176	0.6	178	0.6	188	0.7	212	0.7	212	0.7
Turkish	243	1.0	204	0.7	212	0.7	188	0.7	191	0.7	195	0.7	185	0.6	183	0.6	188	0.6
Albanian	n/a	n/a	68	0.2	104	0.4	117	0.4	154	0.5	162	0.6	167	0.6	177	0.6	186	0.6
Lingala	12	0.0	79	0.3	77	0.3	90	0.3	82	0.3	104	0.4	124	0.4	136	0.5	183	0.6
Ga	99	0.4	203	0.7	196	0.7	203	0.7	192	0.7	167	0.6	171	0.6	153	0.5	124	0.4
Luganda	21	0.1	69	0.2	79	0.3	85	0.3	91	0.3	108	0.4	111	0.4	101	0.3	111	0.4
Krio	9	0.0	18	0.1	112	0.4	104	0.4	103	0.4	107	0.4	121	0.4	104	0.4	110	0.4
Vietnamese	176	0.7	139	0.5	144	0.5	125	0.4	131	0.5	141	0.5	127	0.4	121	0.4	108	0.4
Gujerati	326	1.3	175	0.6	170	0.6	151	0.5	138	0.5	124	0.4	118	0.4	108	0.4	105	0.4
Panjabi	125	0.5	98	0.3	106	0.4	102	0.4	93	0.3	91	0.3	85	0.3	97	0.3	101	0.3
Tagalog	42	0.2	40	0.1	53	0.2	49	0.2	66	0.2	74	0.3	75	0.3	76	0.3	79	0.3
Swahili	23	0.1	65	0.2	76	0.3	69	0.2	66	0.2	87	0.3	89	0.3	93	0.3	78	0.3
German	38	0.2	32	0.1	35	0.1	44	0.2	43	0.2	56	0.2	51	0.2	64	0.2	72	0.2
Kurdish	17	0.1	32	0.1	38	0.1	43	0.2	41	0.1	39	0.1	46	0.2	53	0.2	69	0.2
Greek	133	0.5	102	0.4	86	0.3	74	0.3	64	0.2	71	0.2	56	0.2	60	0.2	62	0.2
Hindi	101	0.4	73	0.3	66	0.2	61	0.2	59	0.2	50	0.2	48	0.2	51	0.2	52	0.2
Serbo-Croat	2	0.0	41	0.1	33	0.1	44	0.2	47	0.2	49	0.2	55	0.2	41	0.1	51	0.2
Urhobo	12	0.0	33	0.1	28	0.1	22	0.1	29	0.1	22	0.1	22	0.1	16	0.1	16	0.1
Others*	364	1.5	813	2.7	721	2.5	798	2.8	862	3.0	908	3.2	999	3.5	954	3.3	1,093	3.7

Source: Research and Statistics Unit Pupil Survey

Data relates to pupils in all Lambeth Nursery, Primary, Secondary and Special Schools

* Other category includes: Acholi, Afrikaans, Amharic, Aramaic, Armenian, Assamese, Ateso, Baluchi, Bansa, Basque, Bayangi, Bemba, Bende, Berber, Bini, Bulgarian, Buli, Burmese, Czech, Dagbani, Danish, Dari, Dhophadola, Dinka, Dioula, Dutch, Edo, Effutu, Efik, Eleme, Eriterina, Esan, Etche, Ewe, Fang, Finnish, Flemish, Frafra, Fulani, Gaelic, Hausa, Hebrew, Hungarian, Icaray, Ilocano, Ijo, Ikwerre, Indonesian, Ishan, Isoko, Itsekiri, Japanese, Kalabari, Kikuyu, Kinyarwanda, Konkani, Korean, Krobo, Kutchi, Latvian, Limba, Lithuanian, Lozi, Luo, Lusoga, Lwo, Malay, Malayalam, Maltese, Mandego, Mandingo, Mandinka, Memon, Mende, Moldavian, Mongolian, Ndebele, Norwegian, Nyanga, Okpe, Okrika, Pahari, Pampangan, Pashto, Patua, Persian, Romanian, Rundi, Runyankore, Russian, Saho, Shona, Sindhi, Singhalese, Slovak, Swedish, Tamil, Tanga, Temne, Thai, Tigre, Tiv, Tonga, Tswana, Ukani, Ukrainian, Unclassified, Welsh, Wolof, Zulu.

ELIGIBILITY FOR FREE SCHOOL MEALS

Pupils Eligible for a Free School Meal, January 2008

Type of School	Eligible for free school meals (%)
Nursery	17.0%
Primary	35.0%
Secondary	35.1%
Special	64.0%
PRUs	28.8%
Total	35.2%

Source: DCSF Schools Census January 2008

Pupils Eligible for Free School Meals Over Time (%), 1994-2008

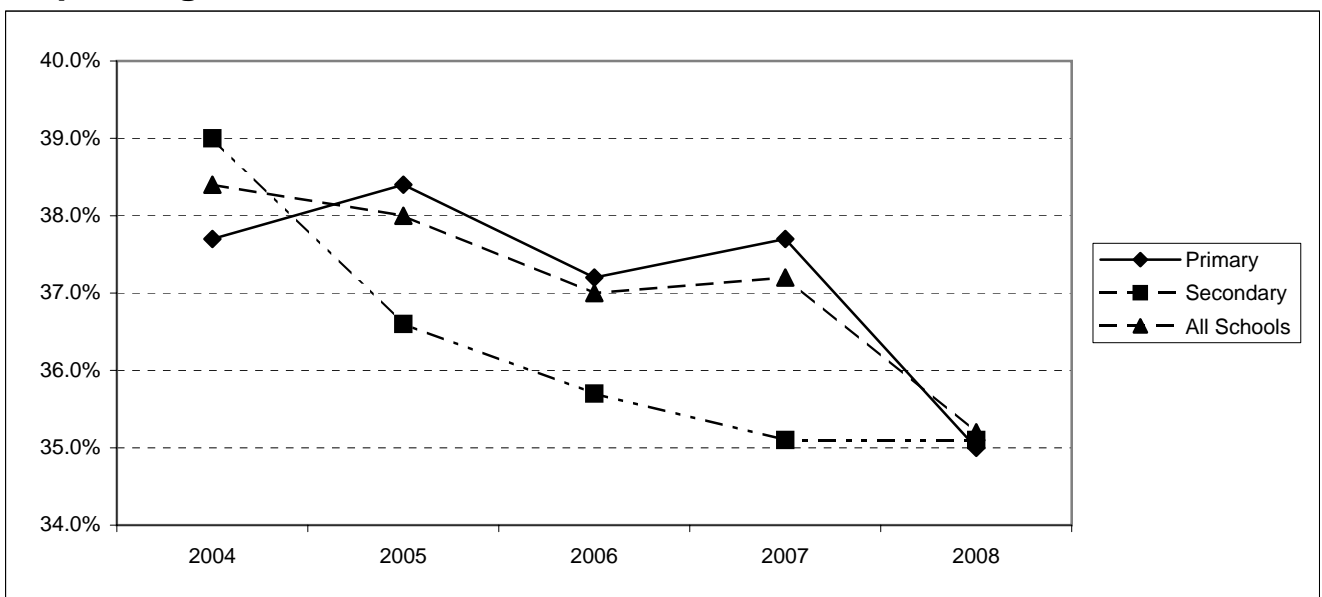
Year	Primary	Secondary	All Schools*
1994	50.8%	51.4%	47.8%
1995	51.5%	52.6%	48.2%
1996	50.4%	51.9%	47.7%
1997	49.3%	52.9%	47.1%
1998	47.5%	48.6%	45.0%
1999	44.3%	46.7%	42.4%
2000	38.9%	45.8%	40.7%
2001	38.3%	41.7%	39.4%
2002	38.7%	38.0%	38.7%
2003	37.9%	37.0%	37.4%
2004	37.7%	39.0%	38.4%
2005	38.4%	36.6%	38.0%
2006	37.2%	35.7%	37.0%
2007	37.7%	35.1%	37.2%
2008	35.0%	35.1%	35.2%
% change 1994-2008	-15.8%	-9.7%	-12.6%

Source: DCSF Form 7 1991-2001, PLASC 2002-2006 7 Schools Census January 2007 onwards

Free Meals data pre-2000 relates to full-time pupils only. After this date the DCSF changed their calculations to include all pupils.

*The 'All Schools' figures relate to nursery, primary, secondary, special schools and PRUs combined

Pupils Eligible for Free School Meals 2004-2008



SPECIAL EDUCATIONAL NEEDS

The SEN provision types and their descriptions are shown below:

N	No special educational need
A	School action or early years action
P	School action plus or early years action plus
S	Statement of special educational need

Pupils with Special Educational Needs by School Phase, 2008

Type of school	Special Needs Pupils not formally stated	Stated by Local Authority
	Number	Number
Nursery	70	5
Primary	4,670	363
Secondary	2,482	268
Special	0	458
PRUs	8	7
Total	7,230	1,101

Source: DCSF Schools Census January 2008

Special Educational Need by Type of Provision, 2008 (%)

SEN Provision Type	Primary	Secondary
N	75.2%	69.9%
A	11.8%	14.5%
P	11.2%	12.7%
S	1.8%	2.9%
Total SEN pupils	24.8%	30.1%

Source: DCSF Schools Census January 2008

Primary Need of Pupils with SEN in Lambeth, 2008 (%)

Prime SEN	Nursery	Primary	Secondary	Special
Autistic Spectrum Disorder	3.6%	8.9%	4.8%	22.5%
Behaviour, Emotional & Social Diff	9.1%	22.3%	44.7%	17.5%
Hearing Impairment	0.0%	2.0%	0.7%	0.0%
Moderate learning Difficulties	0.0%	17.1%	25.5%	7.0%
Multi-Sensory Impairment	0.0%	0.3%	0.0%	0.0%
Other Difficulty/Disability	1.8%	1.4%	2.5%	4.1%
Physical Impairment	5.5%	2.2%	1.3%	0.4%
Profound & Multiple Learning Diff	3.6%	0.5%	0.1%	7.6%
Severe Learning Difficulties	0.0%	0.9%	0.2%	33.4%
Specific Learning Difficulties	0.0%	10.3%	13.4%	1.5%
Speech, Language and Communication Needs	74.5%	33.3%	6.2%	5.9%
Visual Impairment	1.8%	0.7%	0.7%	0.0%

Source: DCSF Schools Census January 2008

Only those SEN pupils classified at provision types 'P' and 'S' have a prime need recorded
Data is not available for PRUs

SPECIAL EDUCATIONAL NEEDS

Stage of Special Educational Need 2004 - 2008 (%)

2004	SEN Type					
	A	P	S	Total SEN	No SEN	Not Known
Nursery	n/a	n/a	n/a	n/a	n/a	0.0%
Primary	11.3%	9.6%	1.6%	22.5%	77.5%	0.0%
Secondary	13.2%	9.5%	2.7%	25.4%	74.6%	0.0%
Special	0.0%	0.8%	99.2%	100.0%	0.0%	0.0%
Pupil Referral Units	n/a	n/a	n/a	n/a	n/a	n/a
Lambeth	11.6%	9.4%	3.7%	24.7%	75.3%	0.0%

2005	SEN Type					
	A	P	S	Total SEN	No SEN	Not Known
Nursery	7.7%	8.8%	0.9%	17.4%	82.6%	17.6%
Primary	11.3%	10.8%	1.6%	23.7%	76.3%	0.0%
Secondary	12.7%	9.8%	2.0%	24.5%	75.5%	0.0%
Special	0.0%	1.8%	98.2%	100.0%	0.0%	0.0%
Pupil Referral Units	n/a	n/a	n/a	n/a	n/a	n/a
Lambeth	11.5%	10.3%	3.4%	25.2%	74.6%	0.3%

2006	SEN Type					
	A	P	S	Total SEN	No SEN	Not Known
Nursery	7.0%	8.8%	0.2%	16.0%	84.0%	0.0%
Primary	11.5%	11.2%	1.6%	24.3%	75.7%	0.0%
Secondary	12.3%	11.3%	2.2%	25.8%	74.2%	0.0%
Special	0.2%	1.3%	98.5%	100.0%	0.0%	0.0%
Pupil Referral Units	n/a	n/a	5.6%	60.9%	39.1%	0.0%
Lambeth	11.4%	11.0%	3.3%	25.7%	74.3%	0.0%

2007	SEN Type					
	A	P	S	Total SEN	No SEN	Not Known
Nursery	6.1%	9.4%	1.0%	16.5%	83.5%	0.0%
Primary	11.9%	11.7%	1.7%	25.3%	74.7%	0.0%
Secondary	14.6%	10.6%	2.6%	27.7%	72.3%	0.0%
Special	0.0%	0.0%	100.0%	100.0%	0.0%	0.0%
Pupil Referral Units	n/a	n/a	6.7%	20.0%	80.0%	0.0%
Lambeth	12.3%	11.1%	3.4%	26.9%	73.1%	0.0%

2008	SEN Type					
	A	P	S	Total SEN	No SEN	Not Known
Nursery	4.1%	10.2%	1.0%	15.3%	84.7%	0.0%
Primary	11.8%	11.2%	1.8%	24.8%	75.2%	0.0%
Secondary	14.5%	12.7%	2.9%	30.1%	69.9%	0.0%
Special	0.0%	0.0%	100.0%	100.0%	0.0%	0.0%
Pupil Referral Units	n/a	n/a	4.8%	10.3%	89.7%	0.0%
Lambeth	12.2%	11.4%	3.6%	27.3%	72.7%	0.0%

Source: DCSF PLASC 2004-2006 & Schools Census 2007 onwards

SEN totals for the Pupil Referral Units include statemented and 'other' SEN pupils - the data for PRUs is not broken down by provision types A and P

NATIONAL CURRICULUM TERMS AND DEFINITIONS

1. The National Curriculum

Pupils aged 5 - 16 in state schools must be taught the National Curriculum. This is divided into four "key stages", which depend on children's ages.

Year Group	Foundation	1	2	3	4	5	6	7	8	9	10	11
Age of pupils at end of year	5	6	7	8	9	10	11	12	13	14	15	16
KEY STAGE	KEY STAGE 1			KEY STAGE 2				KEY STAGE 3			KEY STAGE 4 (GCSE)	

Levels of Achievement

The National Curriculum sets standards of achievement in each subject for pupils aged 5-14. For most subjects, the levels range from 1-8. Pupils climb the levels as they get older and learn more.

Most 7 year olds are expected to achieve Level 2B

Most 11 year olds are expected to achieve Level 4

Most 14 year olds are expected to achieve Levels 5 or 6

Pupils must take national tests at the end of each key stage. These show a pupil's performance in selected parts of a subject on a particular day. At Key Stage 1 prior to 2005, pupils were tested in reading, writing and mathematics. In 2005 this changed so that teacher assessments in these subjects were reported, underpinned by the tests. At Key Stages 2 and 3, pupils are tested in English, mathematics and science. These tests give an independent measure of how pupils and schools are doing, compared with national standards in these subjects.

2. Social Factors Influencing Performance

Research conducted over many years has shown that a pupil's background and circumstances can have an effect on performance. The tables and graphs on the following pages show the performance of pupils in Lambeth schools for each of the key stages. Some of the factors that Lambeth considers when looking at performance include:

Gender

Girls tend to do better than boys in all the key stages. This is especially noticeable in English.

Free School Meals

Previous research has shown a link between social deprivation and performance. Lambeth, in common with many other LAs, uses eligibility for free school meals as a proxy indicator for deprivation.

Fluency in English

Lambeth uses a London wide scale to describe the fluency levels of pupils whose first language is not English. "Stage 1" pupils are beginners, "Stage 2" pupils are becoming familiar with English, "Stage 3" pupils still need some support with English and "Stage 4" pupils are fully fluent in English. "Stage 5" refers to pupils who only speak English.

Ethnicity

Both National and Lambeth research has shown differences in educational achievement when ethnic background is examined. Lambeth collects ethnic background information using 21 categories, which best cover the diverse background of the borough.

Note of Caution

The tables on the following pages show the number of pupils in each category. Care should be taken when interpreting categories where the numbers are small, as the results can be distorted dramatically by the effects of very few pupils.

PUPIL ACHIEVEMENT - KEY STAGE 1

Pupil Achievement at Key Stage 1 2007 (7 Year Olds)

Teacher Assessment

Subject	Other*	Working Towards Level 1	Level 1	Level 2C	Level 2B	Level 2A	Level 3+
Lambeth							
Reading	0%	5%	17%	12%	28%	22%	16%
Writing	0%	6%	19%	22%	30%	18%	6%
Maths	0%	3%	13%	18%	28%	25%	13%
National							
Reading	0%	3%	13%	13%	22%	24%	26%
Writing	0%	5%	15%	22%	27%	20%	13%
Maths	0%	2%	8%	16%	24%	27%	22%

Sources: Research and Statistics Unit Key Stage 1 Analysis & DCSF Statistical First Releases

Figures may not add to 100% due to rounding

*Other. This includes pupils who were disapplied or absent, and those where no level could be calculated

Key: Level 1 should stretch a typical 5-6 year old.
 Level 2 should stretch a typical 7 year old.
 Level 3 should stretch a typical 9 year old

PUPIL ACHIEVEMENT - KEY STAGE 1

Key Stage 1 Teacher Assessment Performance 2005-2007 (7 Year Olds) Pupils Achieving Level 2B or above (%)

School	Reading			Writing			Maths		
	2005	2006	2007	2005	2006	2007	2005	2006	2007
Allen Edwards	67%	58%	48%	58%	51%	41%	62%	56%	53%
Archbishop Sumners CofE	66%	54%	77%	55%	54%	57%	72%	50%	60%
Ashmole	59%	52%	64%	11%	26%	64%	63%	48%	54%
Bonneville	70%	60%	62%	57%	52%	50%	59%	44%	57%
Christ Church CofE (Brixton)	52%	42%	50%	44%	35%	42%	56%	46%	63%
Christ Church Streatham CofE	97%	93%	87%	83%	63%	57%	90%	77%	73%
Clapham Manor	68%	58%	62%	37%	51%	45%	73%	59%	55%
Corpus Christi RC	94%	93%	90%	78%	85%	74%	94%	93%	84%
Crown Lane	45%	55%	45%	33%	42%	29%	43%	53%	45%
Durand	61%	65%	70%	38%	52%	59%	42%	50%	69%
Elm Wood	77%	52%	53%	26%	48%	40%	52%	57%	50%
Fenstanton	42%	51%	57%	36%	51%	43%	39%	44%	55%
Glenbrook	57%	57%	55%	40%	47%	47%	60%	65%	61%
Granton	78%	68%	72%	56%	55%	62%	65%	75%	72%
Heathbrook	67%	72%	69%	67%	72%	55%	77%	74%	71%
Henry Cavendish	71%	66%	80%	67%	57%	78%	71%	72%	84%
Henry Fawcett	49%	46%	34%	40%	31%	23%	49%	56%	45%
Herbert Morrison	71%	73%	63%	46%	68%	33%	58%	73%	74%
Hill Mead	76%	58%	58%	67%	42%	51%	62%	58%	60%
Hitherfield	63%	58%	52%	37%	52%	50%	55%	54%	52%
Holy Trinity CofE	66%	72%	57%	58%	64%	48%	71%	72%	57%
Immanuel CofE	59%	62%	62%	41%	45%	48%	55%	52%	62%
Jessop	70%	38%	59%	70%	29%	55%	74%	24%	68%
Johanna	52%	56%	44%	33%	56%	28%	48%	78%	56%
Jubilee	58%	50%	66%	38%	36%	50%	52%	55%	71%
Julian's	80%	83%	97%	73%	67%	90%	90%	87%	87%
Kings Avenue	53%	50%	52%	47%	41%	39%	51%	46%	52%
Kingswood	60%	57%	64%	54%	41%	51%	57%	63%	53%
Lark Hall	37%	41%	34%	33%	34%	23%	44%	48%	45%
Loughborough	55%	55%	50%	56%	55%	45%	78%	55%	57%
Macaulay CofE	87%	83%	86%	80%	67%	82%	90%	80%	82%
Orchard	n/a	n/a	78%	n/a	n/a	52%	n/a	n/a	85%
Paxton	60%	79%	83%	53%	69%	72%	63%	90%	86%
Reay	86%	71%	70%	76%	39%	57%	83%	64%	83%
Richard Atkins	76%	53%	63%	70%	47%	57%	80%	62%	69%
Rosendale	78%	70%	81%	72%	64%	67%	79%	79%	84%
St Andrew's CofE	62%	67%	83%	54%	67%	63%	62%	63%	87%
St Andrew's RC	70%	90%	86%	67%	85%	81%	80%	93%	86%
St Anne's RC	63%	66%	68%	56%	50%	57%	54%	75%	57%
St Bede's RC	67%	78%	77%	67%	64%	62%	73%	76%	74%
St Helen's RC	68%	58%	62%	47%	45%	44%	55%	48%	49%
St John the Divine CofE	90%	90%	97%	87%	90%	93%	77%	97%	100%

Sources: Research and Statistics Unit Key Stage 1 Analyses & DCSF Statistical First Releases

PUPIL ACHIEVEMENT - KEY STAGE 1

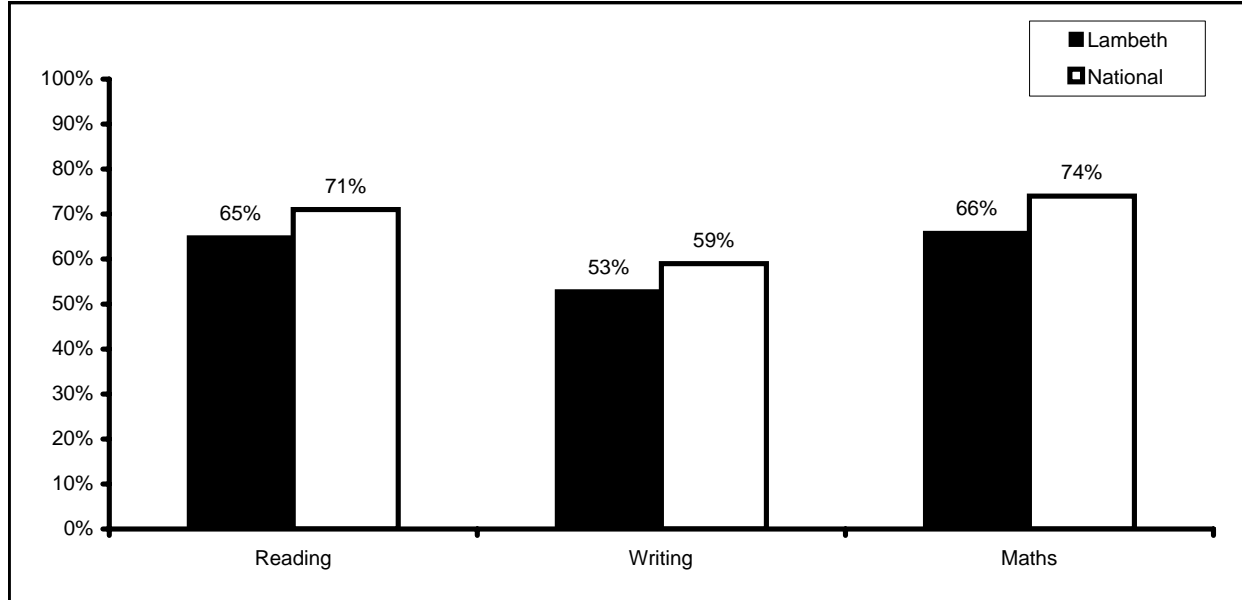
Key Stage 1 Teacher Assessment Performance 2005-2007 (7 Year Olds) Pupils Achieving Level 2B or above (%)

School	Reading			Writing			Maths		
	2005	2006	2007	2005	2006	2007	2005	2006	2007
St John's CofE	47%	63%	60%	50%	57%	37%	50%	57%	73%
St Jude's CofE	84%	86%	70%	81%	71%	80%	90%	68%	73%
St Leonard's CofE	80%	79%	80%	43%	62%	70%	87%	76%	83%
St Luke's CofE	70%	67%	79%	53%	57%	57%	53%	83%	71%
St Mark's CofE	62%	61%	83%	69%	54%	63%	83%	61%	83%
St Mary's RC	76%	72%	70%	62%	62%	57%	73%	87%	75%
St Saviour's CofE	61%	71%	80%	54%	64%	67%	68%	75%	73%
St Stephen's CofE	65%	58%	61%	62%	46%	36%	69%	65%	68%
Stockwell	84%	70%	74%	79%	51%	61%	83%	74%	83%
Streatham Wells	63%	76%	77%	53%	59%	63%	70%	79%	70%
Sudbourne	80%	72%	72%	66%	80%	59%	78%	83%	67%
Sunnyhill	51%	55%	53%	42%	48%	34%	69%	73%	72%
Telferscot	73%	63%	87%	47%	59%	57%	67%	63%	87%
Vauxhall	55%	68%	73%	30%	55%	73%	50%	77%	73%
Walnut Tree Walk	65%	65%	67%	58%	58%	54%	62%	70%	67%
Woodmansterne	68%	61%	63%	72%	65%	59%	75%	74%	63%
Wyvil	60%	40%	42%	47%	27%	41%	58%	63%	48%
Lambeth	66%	63%	65%	54%	54%	53%	65%	65%	66%
National	72%	71%	71%	62%	60%	59%	74%	73%	74%

Sources: Research and Statistics Unit Key Stage 1 Analyses & DCSF Statistical First Releases

Key: 7 year olds at level 2B have reached the national standard typical for a pupil of that age

Pupil Achievement in the Key Stage 1 Teacher Assessments 2007 (Level 2B or above)



PUPIL ACHIEVEMENT - KEY STAGE 1

Key Stage 1 Teacher Assessment Performance 2006 & 2007 (7 Year Olds)

Performance by Ethnic Group (Level 2B+)

Ethnic Background	2006					2007				
	Reading	Writing	Maths	Average	Pupils	Reading	Writing	Maths	Average	Pupils
African	66%	54%	64%	61%	589	68%	54%	66%	63%	589
Any Other Group	56%	48%	65%	56%	71	51%	45%	52%	50%	105
Asian Other	75%	69%	75%	73%	16	79%	62%	83%	75%	29
Bangladeshi	68%	56%	70%	65%	50	63%	50%	59%	57%	32
Black Other	64%	54%	58%	59%	117	63%	43%	66%	57%	119
Caribbean	62%	51%	57%	57%	457	61%	49%	60%	57%	479
Chinese	58%	47%	53%	53%	19	80%	75%	90%	82%	20
Greek	67%	67%	83%	72%	6	0%	0%	100%	33%	1
Gypsy/Roma	0%	0%	0%	0%	2	20%	0%	40%	20%	5
Indian	57%	62%	67%	62%	21	87%	67%	87%	80%	15
Mixed Other	66%	56%	63%	62%	90	66%	58%	68%	64%	119
Mixed White/Asian	79%	75%	79%	78%	24	82%	59%	94%	78%	17
Mixed White/Black African	74%	58%	71%	68%	38	76%	62%	73%	70%	45
Mixed White/Black Caribbean	61%	54%	64%	60%	106	68%	58%	67%	64%	121
Pakistani	71%	66%	76%	71%	38	75%	68%	71%	71%	28
Portuguese	39%	31%	57%	42%	172	47%	39%	52%	46%	158
Turkish	50%	50%	61%	54%	18	33%	56%	44%	44%	9
Vietnamese	50%	50%	75%	58%	8	56%	44%	56%	52%	9
White British	72%	64%	77%	71%	477	74%	63%	75%	70%	456
White Irish	63%	56%	63%	61%	16	100%	73%	87%	87%	15
White Other	58%	52%	70%	60%	161	66%	58%	74%	66%	160

Performance by Free School Meal Status (Level 2B+)

FSM Status	2006					2007				
	Reading	Writing	Maths	Average	Pupils	Reading	Writing	Maths	Average	Pupils
Free Meals	42%	53%	55%	50%	978	55%	44%	58%	53%	1064
Paid Meals	62%	70%	72%	68%	1533	73%	61%	72%	69%	1497

Performance by Stage of English Fluency (Level 2B+)

English Fluency	2006					2007				
	Reading	Writing	Maths	Average	Pupils	Reading	Writing	Maths	Average	Pupils
Stage 1	10%	7%	26%	14%	97	11%	10%	17%	12%	102
Stage 2	40%	31%	49%	40%	448	46%	34%	54%	45%	468
Stage 3	78%	68%	79%	75%	362	80%	65%	77%	74%	376
Stage 4	83%	76%	81%	80%	270	85%	74%	83%	81%	252
English only	67%	57%	67%	64%	1334	69%	57%	69%	65%	1363

Performance by Term of Birth (Level 2B+)

Term of birth	2006					2007				
	Reading	Writing	Maths	Average	Pupils	Reading	Writing	Maths	Average	Pupils
Autumn Born	72%	65%	74%	70%	877	73%	61%	75%	70%	909
Spring Born	61%	52%	65%	59%	832	64%	53%	66%	61%	836
Summer Born	56%	45%	56%	52%	834	58%	46%	57%	54%	863

Comparison of Lambeth and National Results 2005-2007 (Level 2B+)

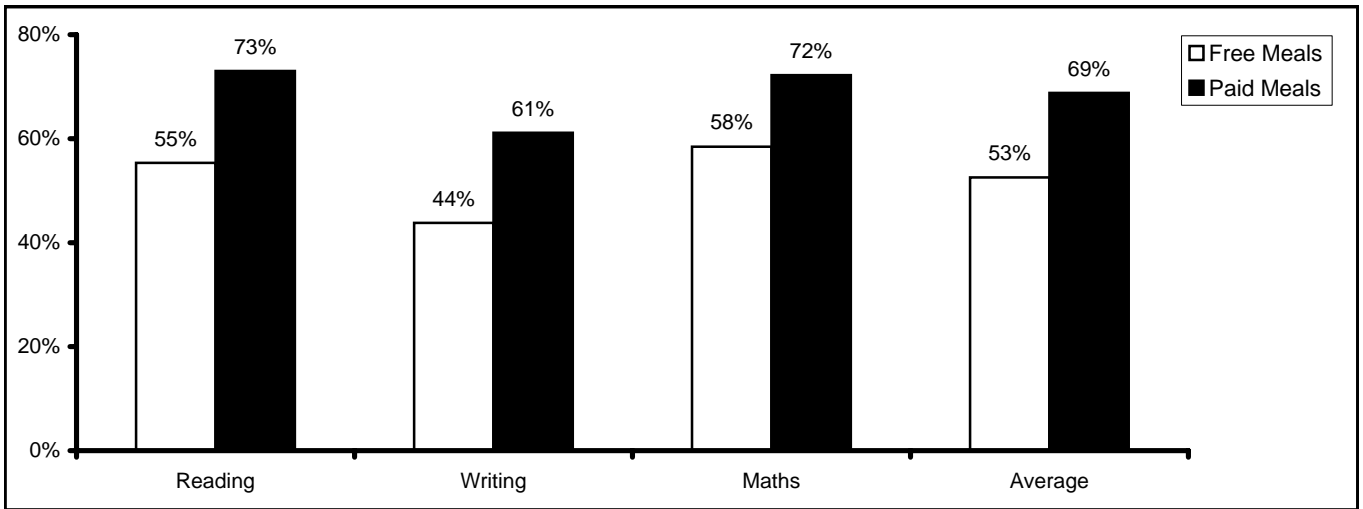
Subject	2005		2006		2007		% Difference 2005-2007	
	Lambeth	National	Lambeth	National	Lambeth	National	Lambeth	National
Reading	66%	72%	63%	71%	65%	71%	-1%	-1%
Writing	54%	62%	54%	60%	53%	59%	-1%	-3%
Maths	65%	74%	65%	73%	66%	74%	1%	0%
Average	65%	74%	61%	68%	62%	68%	-3%	-6%

Sources: Research and Statistics Unit Key Stage 1 Analyses & DCSF Statistical First Releases

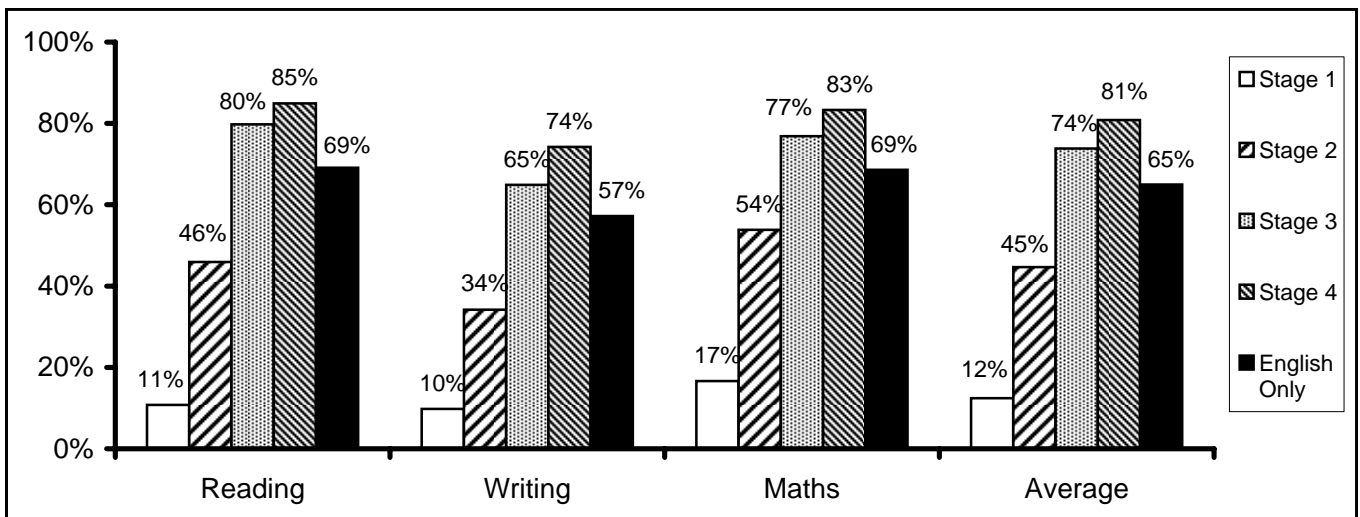
PUPIL ACHIEVEMENT - KEY STAGE 1

Key Stage 1 Performance by Socio-Economic Indicators, 2007

KS1 Performance by Meals Status (Level 2B+)



KS1 Performance by Fluency in English (Level 2B+)

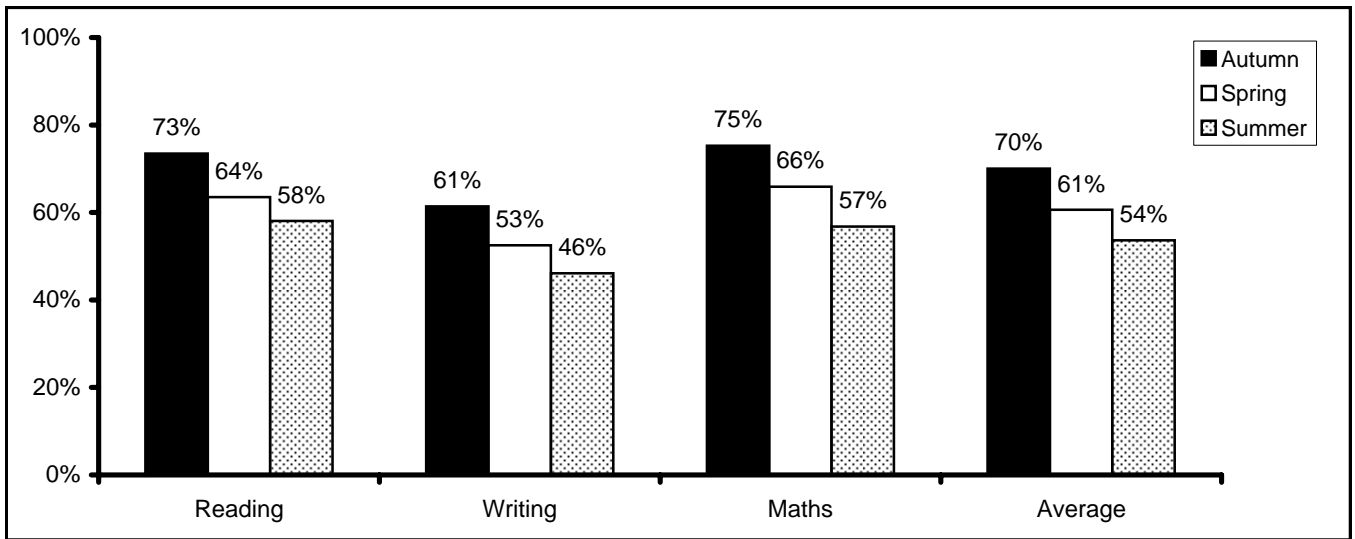


Source: Research and Statistics Unit Key Stage 1 Analysis 2007

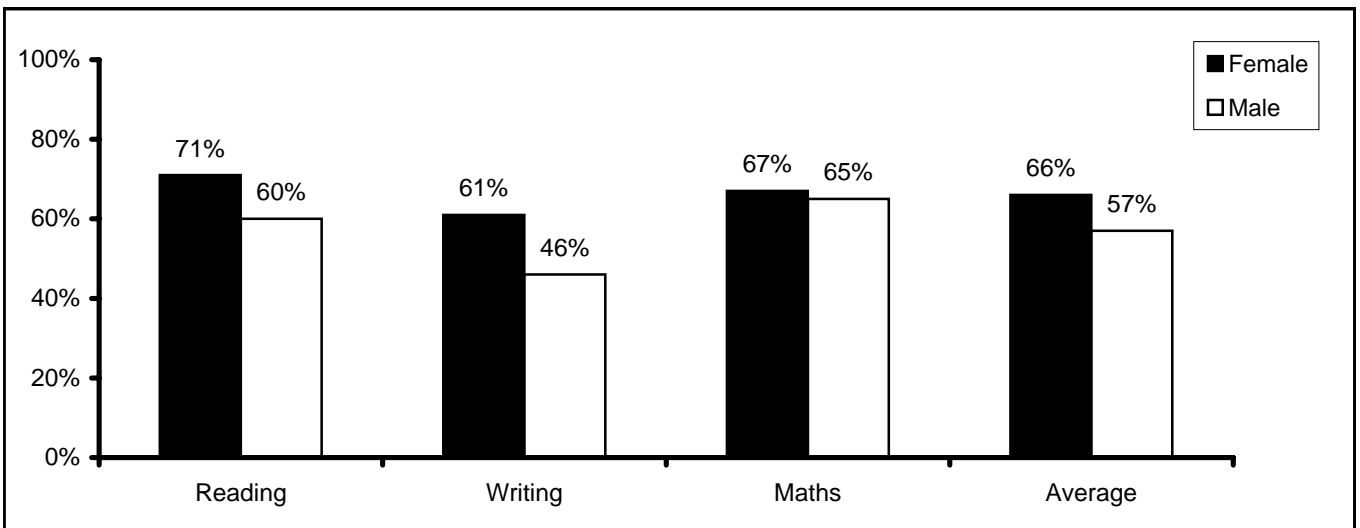
PUPIL ACHIEVEMENT - KEY STAGE 1

Key Stage 1 Performance by Socio-Economic Indicators, 2007

KS1 Performance by Term of Birth (Level 2B+)



KS1 Performance by Gender (Level 2B+)



Source: Research and Statistics Unit Key Stage 1 Analysis 2007

PUPIL ACHIEVEMENT - KEY STAGE 2

Key Stage 2 Test Performance 2005-2007 (11 Year Olds) Pupils Achieving Level 4 or Above (%)

School	English			Maths			Science		
	2005	2006	2007	2005	2006	2007	2005	2006	2007
Allen Edwards	63%	76%	60%	77%	71%	66%	81%	80%	78%
Archbishop Sumners CofE	83%	89%	86%	83%	75%	86%	90%	89%	93%
Ashmole	81%	96%	96%	93%	85%	83%	89%	85%	96%
Bonneville	78%	59%	73%	59%	49%	69%	82%	76%	85%
Christ Church CofE (Brixton)	29%	64%	89%	38%	64%	78%	46%	57%	78%
Christ Church Streatham CofE	77%	89%	76%	73%	75%	76%	83%	96%	90%
Clapham Manor	95%	89%	95%	88%	82%	82%	95%	96%	98%
Corpus Christi RC	94%	96%	94%	94%	98%	94%	97%	96%	100%
Crown Lane	56%	71%	58%	35%	59%	44%	65%	73%	67%
Durand	91%	89%	84%	92%	90%	89%	94%	98%	97%
Elm Wood	79%	45%	46%	63%	38%	54%	67%	69%	62%
Fenstanton	55%	67%	68%	38%	49%	64%	61%	75%	80%
Glenbrook	65%	58%	70%	48%	38%	50%	63%	66%	86%
Granton	96%	79%	69%	81%	63%	73%	98%	79%	86%
Heathbrook	90%	73%	94%	71%	71%	72%	90%	88%	81%
Henry Cavendish	98%	92%	88%	90%	85%	88%	100%	97%	98%
Henry Fawcett	72%	46%	68%	55%	60%	68%	76%	57%	81%
Herbert Morrison	86%	61%	72%	91%	57%	68%	100%	70%	92%
Hill Mead	57%	78%	45%	41%	54%	55%	73%	66%	57%
Hitherfield	83%	88%	75%	79%	88%	69%	89%	98%	82%
Holy Trinity CofE	82%	82%	83%	70%	63%	69%	82%	84%	93%
Immanuel CofE	71%	70%	85%	64%	70%	70%	75%	74%	93%
Jessop	59%	68%	57%	41%	64%	33%	71%	86%	43%
Johanna	74%	58%	67%	68%	58%	25%	95%	69%	92%
Jubilee	69%	70%	63%	46%	42%	60%	69%	60%	75%
Julian's	90%	100%	83%	83%	100%	83%	100%	100%	100%
Kings Avenue	57%	60%	56%	57%	50%	48%	68%	71%	71%
Kingswood	68%	93%	95%	73%	83%	88%	100%	100%	98%
Lark Hall	75%	69%	56%	51%	62%	60%	58%	62%	71%
Loughborough	76%	74%	67%	64%	60%	47%	84%	83%	60%
Macaulay CofE	100%	92%	96%	96%	92%	96%	100%	100%	100%
Paxton	69%	83%	80%	90%	83%	72%	100%	90%	92%
Reay	97%	96%	97%	79%	93%	87%	97%	100%	90%
Richard Atkins	57%	60%	75%	47%	49%	63%	68%	64%	87%
Rosendale	72%	88%	91%	72%	82%	85%	85%	88%	94%
St Andrew's CofE	79%	81%	86%	43%	67%	90%	64%	89%	90%
St Andrew's RC	94%	95%	90%	74%	85%	88%	91%	95%	97%
St Anne's RC	90%	89%	94%	71%	77%	68%	87%	91%	91%
St Bernadette RC	90%	88%	90%	72%	77%	73%	95%	97%	95%
St Helen's RC	86%	89%	92%	92%	89%	79%	97%	100%	100%
St John the Divine CofE	96%	100%	100%	93%	90%	90%	100%	100%	100%

Source: DCSF Primary Achievement & Attainment Tables

PUPIL ACHIEVEMENT - KEY STAGE 2

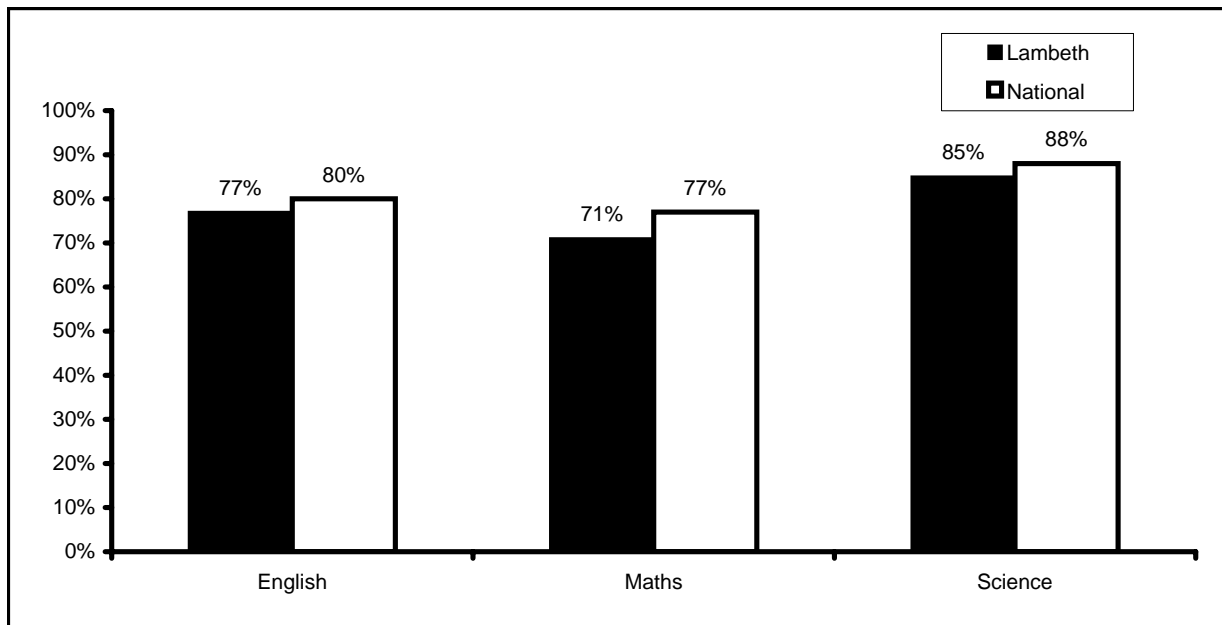
Key Stage 2 Test Performance 2005-2007 (11 Year Olds) Pupils Achieving Level 4 or above (%)

School	English			Maths			Science		
	2005	2006	2007	2005	2006	2007	2005	2006	2007
St John's CofE	47%	74%	74%	70%	44%	70%	47%	59%	70%
St Jude's CofE	83%	79%	93%	90%	82%	93%	97%	93%	100%
St Leonard's CofE	64%	81%	92%	48%	88%	72%	76%	85%	84%
St Luke's CofE	70%	84%	80%	73%	68%	72%	87%	76%	92%
St Mark's CofE	66%	79%	77%	66%	69%	62%	90%	86%	81%
St Mary's RC	79%	98%	87%	79%	88%	62%	88%	95%	87%
St Saviour's CofE	85%	75%	81%	67%	71%	63%	85%	86%	89%
St Stephen's CofE	68%	70%	90%	68%	57%	67%	64%	73%	90%
Stockwell	84%	89%	94%	91%	92%	89%	96%	96%	96%
Streatham Wells	87%	86%	87%	93%	86%	93%	93%	96%	100%
Sudbourne	85%	81%	83%	83%	79%	83%	90%	86%	88%
Sunnyhill	74%	72%	71%	58%	49%	65%	79%	84%	79%
Telferscot	88%	92%	84%	71%	76%	76%	88%	96%	84%
Vauxhall	36%	48%	74%	41%	44%	74%	36%	52%	89%
Walnut Tree Walk	65%	91%	81%	61%	76%	75%	70%	79%	86%
Woodmansterne	77%	69%	78%	71%	71%	78%	87%	86%	97%
Wyvil	77%	71%	55%	65%	65%	79%	81%	84%	89%
Lambeth	76%	78%	77%	68%	70%	71%	82%	83%	85%
National	79%	79%	80%	75%	76%	77%	86%	87%	88%

Source: DCSF Primary Achievement & Attainment Tables

Key: Eleven year olds at level 4 have reached the national standard typical for a pupil of that age

Pupil Achievement in the Key Stage 2 Tests 2007 (Level 4 or above)



PUPIL ACHIEVEMENT - KEY STAGE 2

Key Stage 2 Test Performance 2005-2007 (11 Year Olds) Pupils Achieving Level 5 or Above (%)

School	English			Maths			Science		
	2005	2006	2007	2005	2006	2007	2005	2006	2007
Allen Edwards	6%	16%	10%	13%	20%	18%	17%	31%	14%
Archbishop Sumners CofE	10%	46%	14%	24%	29%	21%	34%	39%	48%
Ashmole	11%	41%	17%	15%	41%	46%	37%	19%	38%
Bonneville	31%	19%	35%	20%	30%	29%	37%	22%	31%
Christ Church CofE (Brixton)	8%	29%	22%	4%	18%	17%	13%	11%	28%
Christ Church Streatham CofE	3%	36%	21%	20%	36%	21%	13%	61%	34%
Clapham Manor	30%	34%	43%	32%	25%	36%	63%	64%	54%
Corpus Christi RC	58%	77%	58%	58%	56%	53%	64%	73%	64%
Crown Lane	14%	24%	11%	7%	18%	4%	14%	20%	13%
Durand	31%	39%	32%	37%	40%	39%	59%	54%	54%
Elm Wood	21%	14%	4%	29%	3%	19%	38%	17%	8%
Fenstanton	9%	11%	10%	5%	6%	14%	14%	21%	19%
Glenbrook	15%	26%	23%	10%	14%	13%	21%	14%	32%
Granton	66%	29%	24%	30%	11%	27%	49%	25%	47%
Heathbrook	29%	44%	49%	33%	42%	40%	38%	48%	51%
Henry Cavendish	40%	56%	55%	40%	49%	33%	66%	62%	50%
Henry Fawcett	17%	9%	16%	0%	3%	30%	21%	14%	24%
Herbert Morrison	45%	9%	24%	32%	17%	20%	50%	17%	60%
Hill Mead	4%	24%	4%	6%	14%	9%	12%	22%	13%
Hitherfield	17%	35%	12%	21%	40%	25%	40%	63%	37%
Holy Trinity CofE	36%	26%	26%	24%	21%	28%	36%	50%	44%
Immanuel CofE	4%	15%	37%	29%	26%	33%	29%	30%	48%
Jessop	6%	36%	14%	6%	14%	10%	0%	27%	19%
Johanna	5%	8%	8%	11%	15%	25%	47%	31%	42%
Jubilee	5%	19%	18%	11%	6%	12%	23%	17%	30%
Julian's	33%	80%	30%	57%	70%	30%	63%	83%	80%
Kings Avenue	4%	13%	5%	17%	3%	4%	28%	19%	10%
Kingswood	3%	29%	38%	27%	7%	33%	43%	51%	53%
Lark Hall	15%	28%	15%	13%	19%	18%	13%	14%	22%
Loughborough	14%	19%	9%	10%	19%	4%	21%	21%	15%
Macaulay CofE	42%	69%	75%	58%	42%	57%	83%	69%	64%
Paxton	10%	31%	44%	34%	52%	28%	48%	41%	40%
Reay	21%	57%	33%	38%	54%	47%	55%	68%	50%
Richard Atkins	12%	28%	31%	7%	13%	10%	25%	17%	31%
Rosendale	17%	51%	47%	36%	46%	43%	49%	51%	64%
St Andrew's CofE	4%	22%	24%	4%	19%	19%	4%	26%	29%
St Andrew's RC	22%	67%	53%	30%	47%	41%	50%	57%	54%
St Anne's RC	31%	19%	30%	21%	32%	19%	27%	38%	28%
St Bernadette RC	36%	38%	58%	29%	23%	29%	57%	47%	56%
St Helen's RC	25%	25%	44%	56%	61%	33%	78%	44%	59%
St John the Divine CofE	71%	83%	63%	61%	57%	47%	81%	53%	77%

Source: DCSF Primary Achievement & Attainment Tables

PUPIL ACHIEVEMENT - KEY STAGE 2

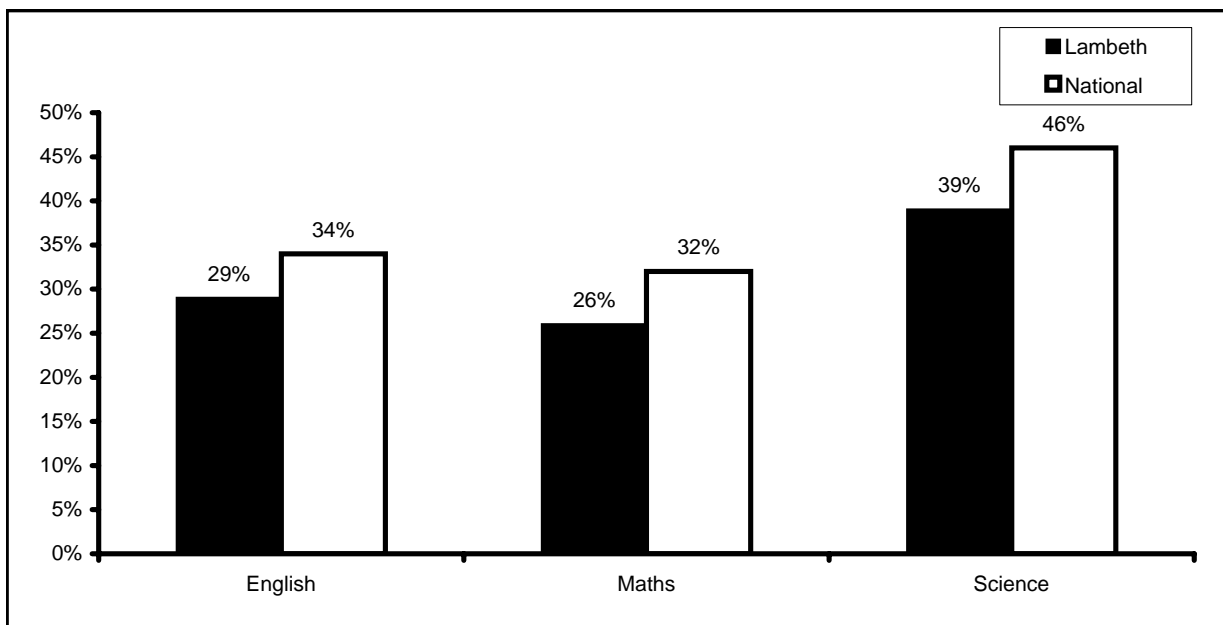
Key Stage 2 Test Performance 2005-2007 (11 Year Olds) Pupils Achieving Level 5 or above (%)

School	English			Maths			Science		
	2005	2006	2007	2005	2006	2007	2005	2006	2007
St John's CofE	7%	26%	19%	17%	11%	11%	7%	15%	0%
St Jude's CofE	7%	43%	48%	23%	36%	33%	33%	39%	56%
St Leonard's CofE	12%	12%	52%	32%	46%	48%	28%	58%	36%
St Luke's CofE	10%	52%	20%	30%	20%	32%	50%	32%	24%
St Mark's CofE	10%	17%	31%	17%	24%	23%	34%	41%	35%
St Mary's RC	30%	51%	36%	33%	37%	15%	40%	49%	31%
St Saviour's CofE	22%	29%	41%	30%	25%	7%	56%	36%	26%
St Stephen's CofE	5%	23%	14%	18%	17%	10%	18%	13%	33%
Stockwell	20%	26%	17%	52%	53%	36%	84%	45%	34%
Streatham Wells	37%	43%	27%	47%	36%	37%	63%	54%	60%
Sudbourne	53%	49%	29%	53%	33%	44%	65%	60%	46%
Sunnyhill	26%	23%	27%	16%	19%	33%	30%	28%	38%
Telferscot	42%	52%	48%	13%	36%	48%	25%	60%	52%
Vauxhall	0%	22%	16%	5%	15%	16%	5%	19%	26%
Walnut Tree Walk	17%	53%	17%	9%	24%	19%	13%	18%	39%
Woodmansterne	10%	29%	42%	29%	32%	38%	56%	31%	62%
Wyvil	21%	12%	11%	25%	22%	21%	38%	33%	34%
Lambeth	21%	33%	29%	25%	28%	26%	38%	37%	39%
National	27%	32%	34%	31%	33%	32%	47%	46%	46%

Source: DCSF Primary Achievement & Attainment Tables

Key: Eleven year olds at Level 5 have exceeded the national standard typical for a pupil of that age

Pupil Achievement in the Key Stage 2 Tests 2007 (Level 5 or above)



PUPIL ACHIEVEMENT - KEY STAGE 2

Key Stage 2 Improvement Measure 2004-2007

School	Improvement Measure - Level 4+				Improvement Measure - Level 5+			
	2004	2005	2006	2007	2004	2005	2006	2007
Allen Edwards	227	221	227	204	71	37	67	42
Archbishop Sumners CofE	233	255	254	266	75	69	114	83
Ashmole	261	263	267	275	89	63	100	100
Bonneville	239	218	184	227	76	88	70	96
Christ Church CofE (Brixton)	125	113	186	244	33	25	57	67
Christ Church Streatham CofE	263	233	261	241	120	37	132	76
Clapham Manor	271	278	268	275	120	125	123	132
Corpus Christi RC	292	286	290	289	166	181	206	175
Crown Lane	135	156	204	169	18	35	63	27
Durand	286	278	277	269	135	127	133	125
Elm Wood	283	208	152	162	69	88	34	31
Fenstanton	156	153	190	212	24	28	38	42
Glenbrook	155	177	162	205	34	46	54	68
Granton	269	274	220	229	134	145	64	98
Heathbrook	250	250	231	247	132	100	133	140
Henry Cavendish	261	288	274	273	100	146	167	138
Henry Fawcett	209	203	163	216	65	38	26	70
Herbert Morrison	265	277	187	232	104	127	43	104
Hill Mead	152	171	198	157	31	22	60	26
Hitherfield	255	251	274	225	111	79	137	75
Holy Trinity CofE	261	233	229	244	103	97	97	98
Immanuel CofE	240	211	215	248	67	61	70	119
Jessop	177	171	218	133	64	12	77	43
Johanna	190	237	185	183	52	63	54	75
Jubilee	198	184	172	198	57	39	42	60
Julian's	277	273	300	267	127	153	233	140
Kings Avenue	152	181	181	175	17	49	35	19
Kingswood	176	241	276	280	52	73	88	123
Lark Hall	148	184	193	187	40	40	60	55
Loughborough	228	224	217	175	61	45	58	27
Macaulay CofE	282	296	285	293	171	183	181	196
Paxton	255	259	255	244	82	93	124	112
Reay	287	272	289	273	153	114	179	130
Richard Atkins	186	172	174	225	53	43	58	71
Rosendale	242	228	259	271	114	101	149	154
St Andrew's CofE	130	186	237	267	33	11	67	71
St Andrew's RC	274	259	275	275	136	102	170	147
St Anne's RC	235	248	257	253	100	79	89	77
St Bernadette RC	269	257	262	258	114	122	108	142
St Helen's RC	274	275	278	272	177	158	131	136
St John the Divine CofE	293	289	290	290	143	214	193	187

Source: DCSF Primary Achievement & Attainment Tables

PUPIL ACHIEVEMENT - KEY STAGE 2

Key Stage 2 Improvement Measure 2004-2007

School	Improvement Measure - Level 4+				Improvement Measure - Level 5+			
	2004	2005	2006	2007	2004	2005	2006	2007
St John's CofE	232	163	178	215	52	30	52	30
St Jude's CofE	283	270	254	285	140	63	118	137
St Leonard's CofE	241	188	254	248	162	72	115	136
St Luke's CofE	223	230	228	244	62	90	104	76
St Mark's CofE	258	221	234	219	96	62	83	88
St Mary's RC	269	247	281	236	115	102	137	82
St Saviour's CofE	247	237	232	233	107	107	89	74
St Stephen's CofE	210	200	200	248	52	41	53	57
Stockwell	256	271	277	279	158	155	125	87
Streatham Wells	262	273	268	280	117	147	132	123
Sudbourne	290	258	247	254	217	170	142	120
Sunnyhill	192	212	205	215	69	72	70	98
Telferscot	211	246	264	244	36	79	148	148
Vauxhall	223	114	144	237	69	9	56	58
Walnut Tree Walk	209	196	247	242	43	39	94	75
Woodmansterne	236	235	227	253	116	94	92	142
Wyvil	216	223	220	223	50	83	67	66
Lambeth	227	226	231	234	90	84	98	93
National	237	240	242	245	101	104	111	113

Source: DCSF Primary Achievement & Attainment Tables

Note: The improvement measures shown here refer to the combined percentage attainment over a four year period of pupils achieving level 4 or above and level 5 or above in the KS2 English, maths and science tests.

PUPIL ACHIEVEMENT - KEY STAGE 2

Key Stage 2 Performance by Socio-Economic Indicators 2006 & 2007

Test Performance - Ethnic Background (Level 4+)

Ethnic Background	2006					2007				
	English	Maths	Science	Average	Pupils	English	Maths	Science	Average	Pupils
African	80%	73%	82%	78%	543	80%	73%	85%	79%	552
Any Other Group	81%	62%	81%	75%	42	83%	71%	93%	82%	75
Asian Other	72%	66%	83%	74%	29	94%	81%	94%	90%	16
Bangladeshi	86%	79%	90%	85%	42	85%	80%	89%	85%	46
Black Other	81%	70%	89%	80%	108	76%	65%	80%	73%	103
Caribbean	72%	57%	78%	69%	540	70%	60%	82%	71%	485
Chinese	94%	83%	89%	89%	18	95%	95%	100%	96%	19
Greek	100%	67%	67%	78%	3	100%	100%	100%	100%	4
Gypsy/Roma	67%	33%	67%	56%	3	60%	60%	80%	67%	5
Indian	85%	85%	80%	83%	20	95%	90%	90%	92%	21
Mixed Other	89%	81%	92%	88%	75	82%	78%	96%	85%	90
Mixed White/Asian	100%	100%	100%	100%	15	93%	64%	93%	83%	14
Mixed White/Black African	90%	72%	90%	84%	29	74%	67%	71%	71%	42
Mixed White/Black Caribbean	79%	68%	81%	76%	126	85%	80%	90%	85%	132
Pakistani	72%	68%	72%	71%	25	81%	85%	92%	86%	26
Portuguese	63%	61%	73%	66%	120	62%	64%	81%	69%	138
Turkish	75%	56%	100%	77%	16	56%	56%	72%	61%	18
Vietnamese	78%	78%	78%	78%	9	90%	70%	90%	83%	10
White British	82%	79%	86%	83%	406	82%	77%	88%	83%	389
White Irish	94%	94%	100%	96%	18	93%	93%	93%	93%	15
White Other	80%	80%	88%	83%	143	83%	82%	89%	85%	129

Test Performance - Free School Meal Status (Level 4+)

FSM Status	2006					2007				
	English	Maths	Science	Average	Pupils	English	Maths	Science	Average	Pupils
Free Meals	70%	61%	76%	69%	924	70%	64%	81%	72%	943
Paid Meals	84%	76%	87%	82%	1420	83%	77%	89%	83%	1410

Test Performance - Fluency in English (Level 4+)

English Fluency	2006					2007				
	English	Maths	Science	Average	Pupils	English	Maths	Science	Average	Pupils
Stage 1	14%	22%	31%	22%	36	32%	42%	42%	39%	19
Stage 2	34%	34%	48%	39%	151	31%	43%	49%	41%	112
Stage 3	75%	68%	80%	74%	396	73%	64%	82%	73%	387
Stage 4	91%	84%	92%	89%	467	93%	88%	97%	93%	530
English only	79%	69%	83%	77%	1339	78%	70%	86%	78%	1304

Comparison of Lambeth and National Results 2005-2007 (Level 4+)

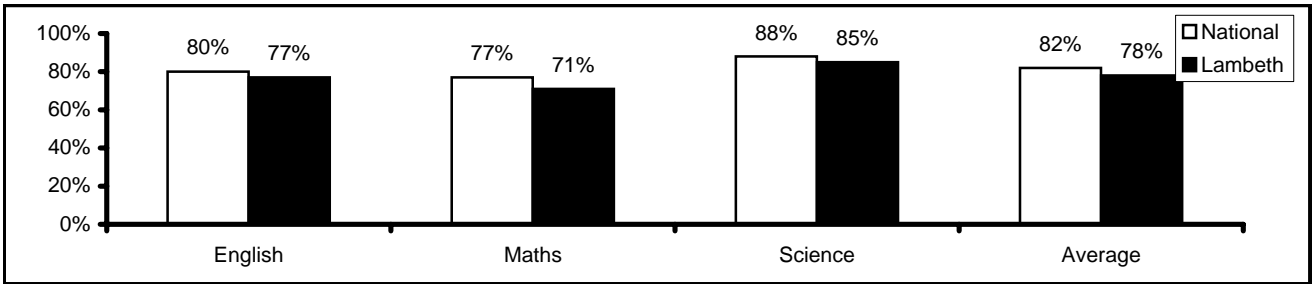
	2005		2006		2007		Improvement 2005-2007	
	Lambeth	National	Lambeth	National	Lambeth	National	Lambeth	National
Teacher Assessment								
English	72%	75%	71%	77%	76%	80%	4%	5%
Maths	71%	76%	70%	78%	73%	78%	2%	2%
Science	78%	83%	79%	84%	83%	85%	5%	2%
Average	74%	78%	73%	80%	78%	81%	4%	3%
Test/task								
English	76%	79%	78%	79%	77%	80%	1%	1%
Maths	68%	75%	70%	76%	71%	77%	3%	2%
Science	82%	86%	83%	87%	85%	88%	3%	2%
Average	75%	80%	77%	81%	78%	82%	3%	2%

Source: Research and Statistics Unit Key Stage 2 Analysis & DCSF Statistical First Release

PUPIL ACHIEVEMENT - KEY STAGE 2

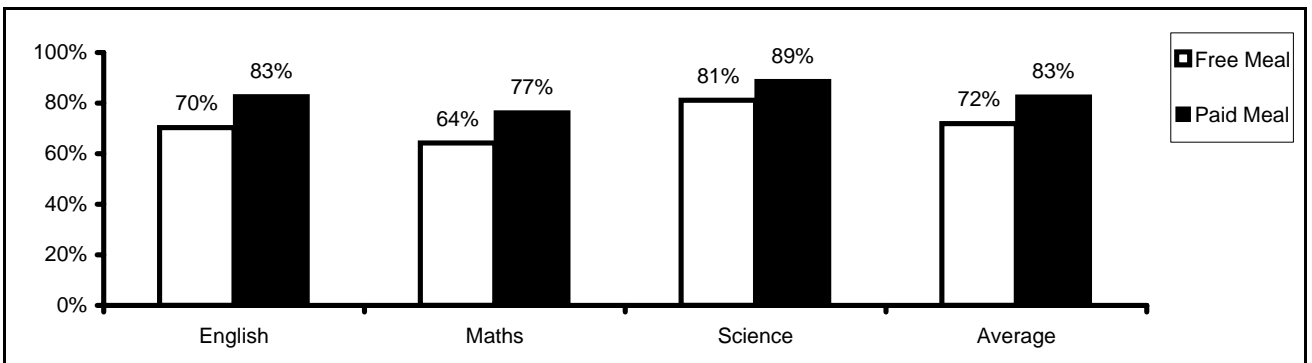
Key Stage 2 Test Performance, 2007

Comparison of Lambeth and National Test Performance, 2007 (Level 4+)

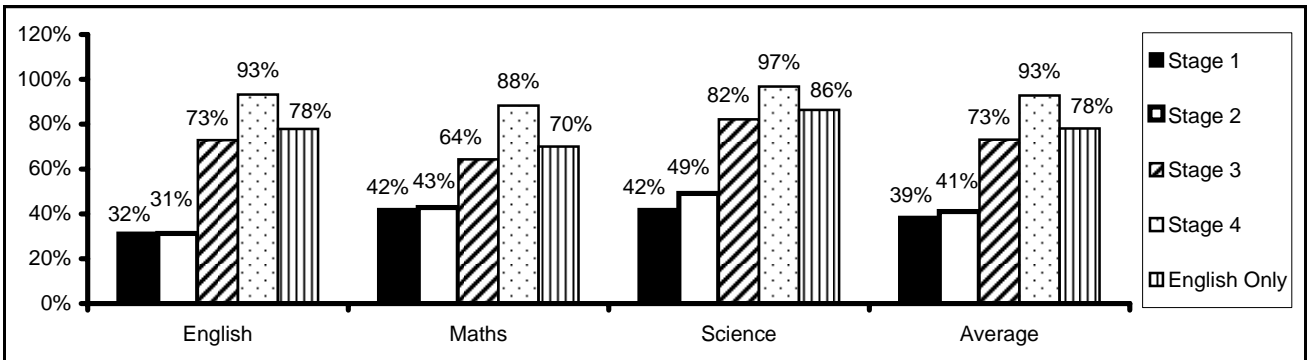


Key Stage 2 Test Performance by Socio-Economic Indicators, 2007

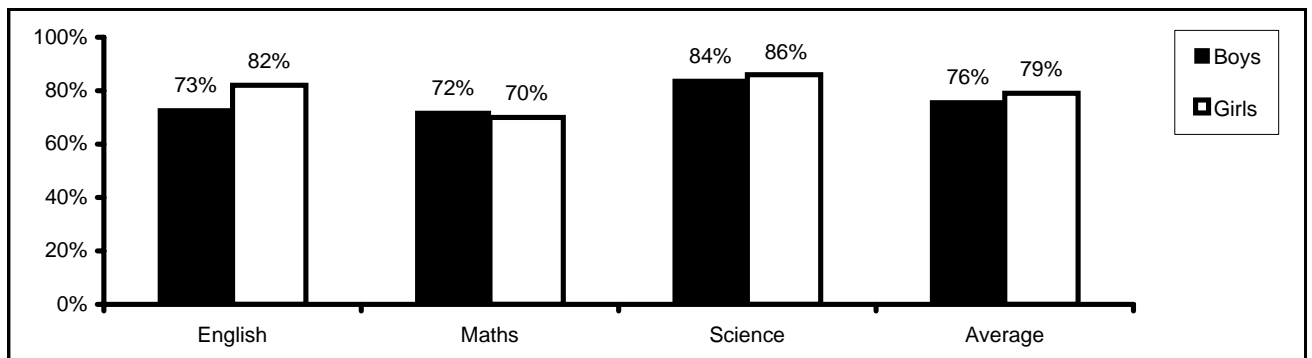
KS2 Test Performance by Free School Meals (Level 4+)



KS2 Test Performance by Fluency in English (Level 4+)



KS2 Test Performance by Gender (Level 4+)



Sources: Research and Statistics Unit Key Stage 2 Analysis & DCSF Statistical First Releases

PUPIL ACHIEVEMENT - KEY STAGE 2

Key Stage 1 to 2 Contextual Value Added 2007

Contextual Value Added (CVA) - Terms and definitions

CVA is not very different from VA. The basic principle of measuring progress from Key Stage 1 to Key Stage 2 remains the same. However, a number of other factors which are outside a school's control, such as gender, special educational needs, movement between schools, and family circumstances, are also known to affect pupils' performance. CVA takes these factors into account, which means comparisons against other schools becomes more meaningful.

Having taken into account the range of factors affecting performance, each pupil's CVA score is based on a comparison between their actual Key Stage 2 performance and their performance predicted by the CVA model.

KS1-2 CVA Score - An average of all pupils' CVA scores is produced for a school. That average is adjusted by the CVA model to account for cohort size, which then produces a school level CVA measure. This number is presented as a number based around 100 to indicate the value the school has added on average for its pupils. Scores above 100 represent schools where pupils on average made more progress than similar pupils nationally. While scores below 100 represent schools where pupils made less progress.

Coverage Indicator - This shows the percentage of pupils at the end of Key Stage 2 included in the CVA calculation. Pupils not included are new arrivals to the country with no prior attainment, or those previously educated in the independent sector. If the coverage is very low (below 50 per cent) then the CVA score is not published because it does not properly represent the effectiveness of the school.

CVA Confidence Intervals - The uncertainty of a CVA score as a measure of school effectiveness can be presented as a confidence interval (CI). This is a range of scores (defined by a lower and upper limit) within which we can be statistically confident that the 'true' school effectiveness will lie. The degree of significance that can be attached to a school's CVA measure depends, among other things, on the number of pupils included in the calculation with cohort size also having a bearing on the CI range.

CVA percentiles

The CVA percentiles give the distribution of CVA scores and show where schools are placed nationally compared to other schools, based on the CVA measure.

CVA measure range	101.5 and above	100.6 to 101.4	100.2 to 100.5	99.8 to 100.1	99.4 to 99.7	98.5 to 99.3
Percentile	Top 5% of schools nationally	Next 20% of schools nationally	Next 15% of schools nationally	Middle 20% of schools nationally	Next 15% of schools nationally	Next 20% of schools nationally

School	Contextual Value Added			
	KS1-2 CVA Score	Coverage	CVA Confidence intervals	
			Lower Limit	Upper Limit
Allen Edwards	99.7	96%	99.2	100.3
Archbishop Sumners CofE	100.2	90%	99.5	101.0
Ashmole	101.5	96%	100.8	102.3
Bonneville	99.1	96%	98.5	99.7
Christ Church CofE (Brixton)	99.5	78%	98.6	100.5
Christ Church Streatham CofE	99.1	100%	98.4	99.8
Clapham Manor	101.7	100%	101.1	102.2
Corpus Christi RC	100.9	97%	100.3	101.6
Crown Lane	98.7	78%	98.1	99.3
Durand	101.9	97%	101.5	102.4
Elm Wood	97.6	92%	96.8	98.3
Fenstanton	100.4	83%	99.9	101.0
Glenbrook	100.3	84%	99.7	100.9
Granton	100.7	94%	100.1	101.3

Source: DCSF Primary Achievement & Attainment Tables

PUPIL ACHIEVEMENT - KEY STAGE 2

Key Stage 1 to 2 Contextual Value Added 2007

School	Contextual Value Added			
	KS1-2 CVA Score	Coverage	CVA Confidence intervals	
			Lower Limit	Upper Limit
Heathbrook	101.4	96%	100.8	101.9
Henry Cavendish	101.3	95%	100.7	101.9
Henry Fawcett	100.9	86%	100.2	101.5
Herbert Morrison	100.0	92%	99.2	100.8
Hill Mead	99.5	83%	99.0	100.1
Hitherfield	100.5	88%	99.9	101.0
Holy Trinity CofE	101.4	96%	100.9	101.9
Immanuel CofE	101.2	89%	100.5	102.0
Jessop	98.6	90%	97.7	99.4
Johanna	100.3	100%	99.3	101.3
Jubilee	100.3	93%	99.8	100.9
Julian's	100.9	100%	100.2	101.6
Kings Avenue	100.2	84%	99.7	100.7
Kingswood	104.0	95%	103.4	104.7
Lark Hall	99.7	85%	99.2	100.3
Loughborough	99.4	93%	98.9	100.0
Macaulay CofE	102.0	100%	101.3	102.7
Paxton	101.4	100%	100.7	102.2
Reay	101.2	100%	100.5	101.8
Richard Atkins	98.6	88%	98.0	99.1
Rosendale	101.8	93%	101.4	102.3
St Andrew's CofE	101.4	90%	100.6	102.3
St Andrew's RC	100.8	92%	100.2	101.3
St Anne's RC	100.3	87%	99.7	100.9
St Bernadette RC	100.6	97%	100.1	101.1
St Helen's RC	102.1	95%	101.5	102.7
St John the Divine CofE	102.0	90%	101.3	102.7
St John's CofE	98.7	96%	98.0	99.5
St Jude's CofE	101.8	93%	101.1	102.6
St Leonard's CofE	100.5	92%	99.7	101.3
St Luke's CofE	100.3	96%	99.5	101.0
St Mark's CofE	99.5	96%	98.8	100.3
St Mary's RC	99.9	100%	99.3	100.5
St Saviour's CofE	100.0	96%	99.3	100.8
St Stephen's CofE	98.6	95%	97.8	99.4
Stockwell	102.6	91%	102.0	103.2
Streatham Wells	101.8	100%	101.1	102.5
Sudbourne	99.7	98%	99.1	100.3
Sunnyhill	100.4	80%	99.8	101.0
Telferscot	101.2	84%	100.4	102.0
Vauxhall	99.9	95%	99.1	100.8
Walnut Tree Walk	99.5	94%	98.9	100.2
Woodmansterne	101.0	92%	100.5	101.5
Wyvil	100.6	91%	100.1	101.2
Lambeth	100.6	92%	-	-

Source: DCSF Primary Achievement & Attainment Tables

PUPIL ACHIEVEMENT - KEY STAGE 3

Key Stage 3 Test Performance 2005-2007 (14 Year Olds)

Pupils achieving Level 5 or above (%)

School	English			Maths			Science		
	2005	2006	2007	2005	2006	2007	2005	2006	2007
Archbishop Tenison's	83%	84%	76%	86%	89%	85%	78%	82%	77%
Bishop Thomas Grant	68%	77%	89%	71%	85%	85%	68%	71%	82%
Charles Edward Brooke	64%	64%	69%	57%	64%	64%	43%	47%	54%
Dunraven	93%	88%	79%	89%	88%	85%	84%	80%	75%
La Retraite	88%	91%	87%	79%	84%	86%	77%	85%	81%
Lambeth Academy	n/a	n/a	70%	n/a	n/a	62%	n/a	n/a	51%
Lilian Baylis	49%	53%	41%	48%	57%	58%	43%	51%	53%
London Nautical	86%	91%	79%	87%	88%	83%	81%	88%	81%
Norwood	74%	63%	45%	42%	49%	51%	42%	46%	46%
St Martin's	80%	82%	82%	75%	73%	84%	61%	69%	80%
Stockwell Park	56%	63%	60%	50%	63%	71%	45%	47%	50%
Lambeth~	71%	72%	69%	65%	71%	72%	59%	63%	64%
National~	74%	73%	74%	74%	77%	76%	70%	72%	73%

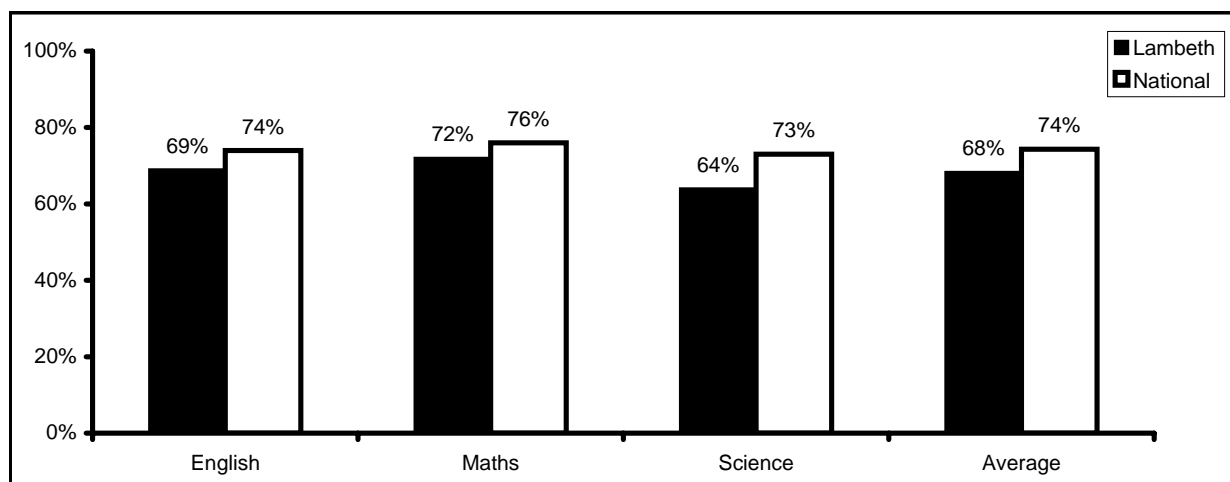
~ Includes special schools

Source: DCSF Secondary School Achievement & Attainment Tables

Comparison of Lambeth and National Results 2005 - 2007 (Level 5+)

Test	2005		2006		2007		Improvement 2005 - 2007	
	Lambeth	National	Lambeth	National	Lambeth	National	Lambeth	National
English	71%	74%	72%	73%	69%	74%	-2%	0%
Maths	65%	74%	71%	77%	72%	76%	7%	2%
Science	59%	70%	63%	72%	64%	73%	5%	3%
Average	65%	73%	69%	74%	68%	74%	3%	1%

Comparison of Lambeth and National Test Performance 2007 (Level 5+)



Sources: Research and Statistics Unit Key Stage 3 Analysis DCSF Statistical First Releases

PUPIL ACHIEVEMENT - KEY STAGE 3

Key Stage 3 Performance 2006 & 2007 (14 Year Olds)

Test Performance by Ethnic Group - Level 5+ (%)

Ethnic Background	2006					2007				
	English	Maths	Science	Average	Pupils	English	Maths	Science	Average	Pupils
African	71%	72%	61%	68%	380	74%	78%	70%	74%	376
Any Other Group	79%	79%	67%	75%	33	72%	70%	69%	70%	54
Asian Other	67%	92%	50%	70%	12	63%	75%	56%	65%	16
Bangladeshi	70%	80%	50%	67%	30	69%	73%	52%	64%	33
Black Other	74%	74%	68%	72%	93	82%	78%	65%	75%	139
Caribbean	67%	62%	53%	61%	322	61%	62%	56%	60%	319
Chinese	86%	100%	95%	94%	21	76%	92%	79%	82%	25
Greek	100%	100%	100%	100%	3	n/a	n/a	n/a	n/a	0
Gypsy/Roma	33%	33%	0%	22%	3	67%	100%	67%	78%	3
Indian	100%	100%	100%	100%	5	71%	71%	43%	62%	7
Mixed Other	86%	79%	76%	80%	58	77%	77%	70%	75%	69
Mixed White/Asian	100%	100%	100%	100%	7	100%	100%	100%	100%	4
Mixed White/Black African	78%	78%	78%	78%	9	89%	83%	83%	85%	18
Mixed White/Black Caribbean	91%	89%	77%	86%	53	78%	80%	66%	74%	66
Pakistani	17%	50%	50%	39%	6	75%	63%	75%	71%	8
Portuguese	67%	75%	54%	65%	87	66%	66%	52%	61%	87
Turkish	63%	88%	88%	80%	8	75%	50%	50%	58%	4
Vietnamese	90%	90%	70%	83%	10	83%	100%	86%	90%	7
White British	79%	81%	76%	79%	303	71%	78%	71%	73%	299
White Irish	82%	91%	73%	82%	11	88%	88%	94%	90%	17
White Other	72%	75%	67%	71%	72	71%	78%	69%	72%	90

Test Performance by Stage of English Fluency - Level 5+ (%)

English Fluency	2006					2007				
	English	Maths	Science	Average	Pupils	English	Maths	Science	Average	Pupils
Stage 1	0%	11%	0%	4%	18	0%	57%	14%	24%	7
Stage 2	21%	46%	23%	30%	52	27%	35%	31%	31%	52
Stage 3	59%	70%	50%	60%	180	62%	64%	52%	59%	161
Stage 4	81%	81%	71%	78%	372	81%	83%	75%	80%	463
English only	77%	74%	67%	73%	927	71%	74%	66%	70%	970

Test Performance by Free School Meals - Level 5+ (%)

Meal Status	2006					2007				
	English	Maths	Science	Average	Pupils	English	Maths	Science	Average	Pupils
Free Meal	66%	67%	54%	62%	608	62%	69%	58%	63%	556
Paid Meal	79%	78%	72%	76%	925	77%	80%	73%	77%	920

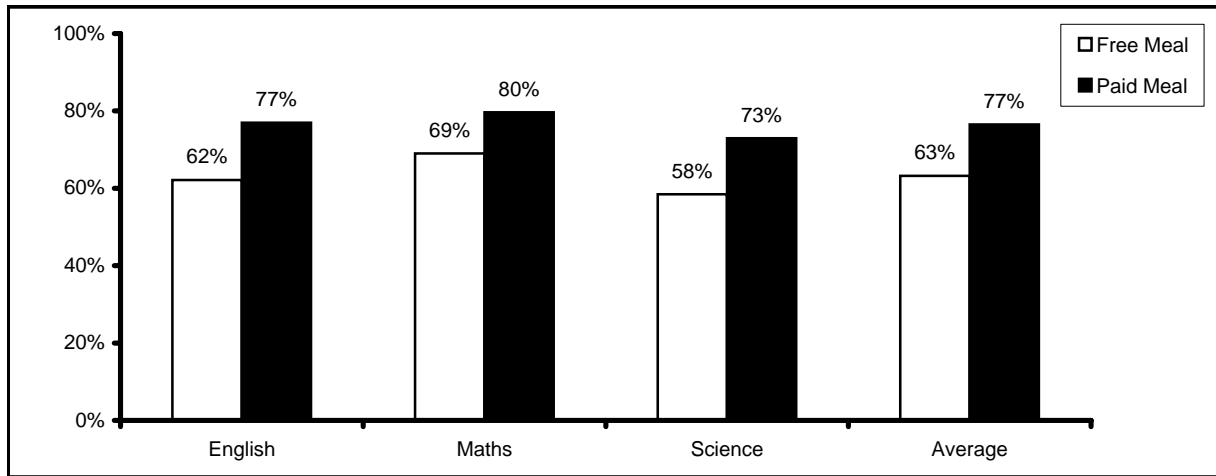
Source: Research and Statistics Unit Key Stage 3 Analysis

Some pupils do not undertake the tests in all three subjects at the end of Key Stage 3. Therefore, the cohort figures given here are a total of those pupils who sat the tests in atleast one subject.

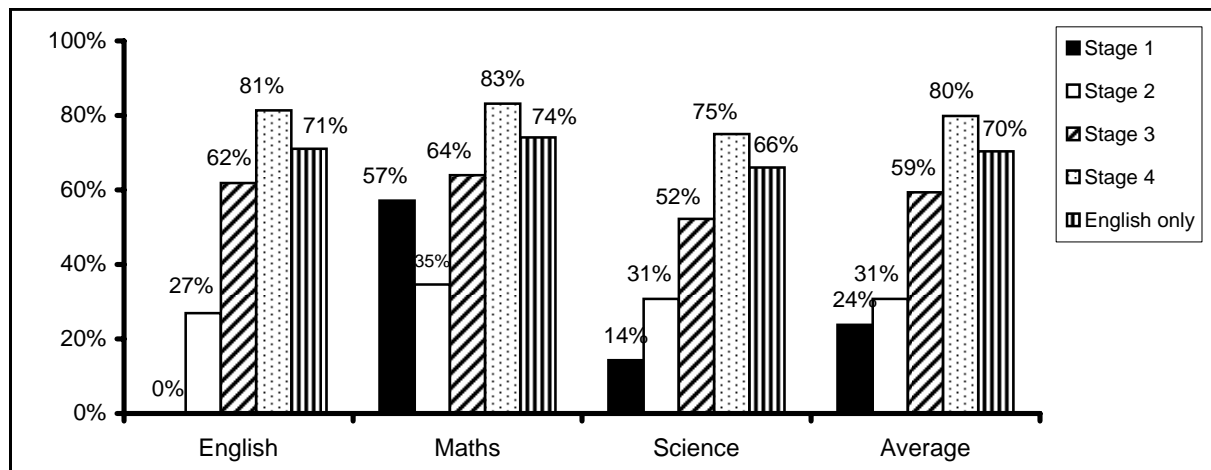
PUPIL ACHIEVEMENT - KEY STAGE 3

Key Stage 3 Performance by Socio-Economic Indicators 2007

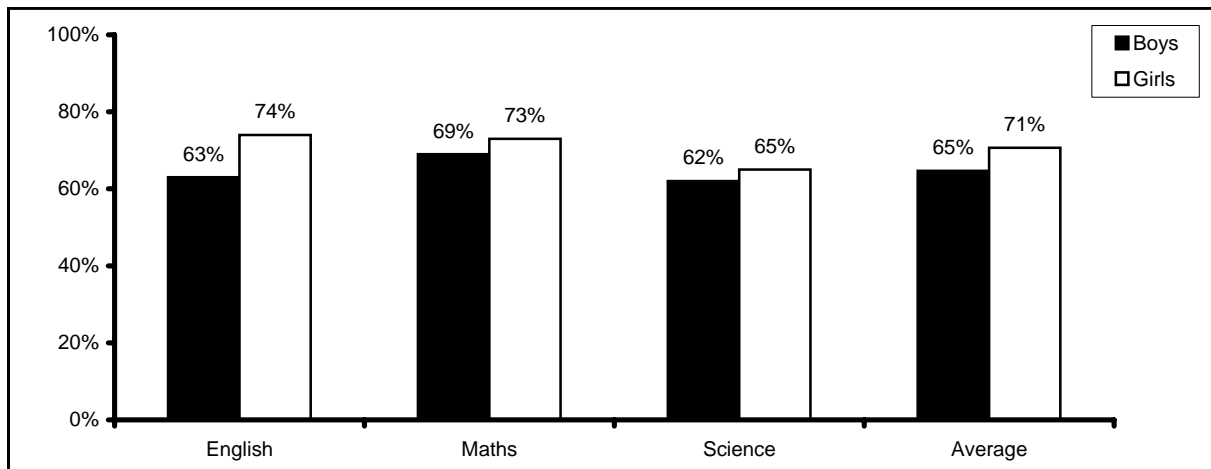
Test Performance by Meals Status (Level 5+)



Test Performance by Fluency in English (Level 5+)



Test Performance by Gender (Level 5+)



Source: Research and Statistics Unit Key Stage 3 Analysis

PUPIL ACHIEVEMENT - KEY STAGE 3

Key Stage 2 to 3 Contextual Value Added 2007

School	Cohort	CVA Measure	Limit of KS2-3 CVA Confidence Intervals		Coverage
			Upper Limit	Lower Limit	
Archbishop Tenison's	87	100.2	100.7	99.7	99%
Bishop Thomas Grant	174	100.9	101.2	100.5	90%
Charles Edward Brooke	136	100.0	100.5	99.6	86%
Dunraven	207	99.8	100.2	99.5	98%
La Retraite	138	100.5	100.9	100.0	91%
Lambeth Academy	172	99.1	99.5	98.7	97%
Lilian Baylis	113	99.9	100.4	99.4	87%
London Nautical	115	98.8	99.3	98.3	97%
Norwood	126	99.8	100.3	99.3	80%
St Martin-in-the-Fields	142	99.9	100.3	99.5	95%
Stockwell Park	178	100.4	100.8	100.0	89%
Lambeth	1588	99.9	n/a	n/a	n/a

Source: DCSF KS3 Achievement & Attainment Tables

n/a = not available

Terms used and their definitions

Cohort - This relates to the number of pupils who were at the end of KS3 and therefore eligible to take the tests.

The KS2-KS3 contextual value added measure - Each pupil's CVA score is based on a comparison between their actual KS3 performance and the KS3 performance predicted for them by the CVA model, having taken into account the range of factors affecting performance (such as gender, SEN, pupil mobility and ethnic background). The school score is an average of all pupils' CVA scores.

Confidence Intervals - This refers to the range of scores (defined by an upper and lower limit) within which we can be statistically confident the CVA measure represents the overall effectiveness of a school. This relates to the size of the cohort i.e. the smaller the cohort, the larger the range will be and the less confidence can be placed on the CVA measure as an indicator of whether a school's effectiveness is significantly above or below average.

The coverage indicator - This shows the proportion of pupils who were included in the value added calculation. It also gives some indication of schools where the value added measures may be unrepresentative. A low indicator means information was not available to calculate the value added for a large proportion of a school's pupils, and so these pupils could not be included in the calculation.

How to interpret a school's value added measure

The CVA measure is shown as a score based around 100. Scores above 100 represent schools where pupils on average made more progress than similar pupils nationally, while scores below 100 represent schools where pupils made less progress. For KS2 to 3 CVA, a measure of 101 means that, on average, the school's KS3 cohort has achieved one term's more progress than the national average. A score of 99 means that the school's pupils made a term's less progress.

The table below shows where schools can be placed nationally compared to all other maintained mainstream schools, based on the CVA measure.

101.5 and above	Top 5% of schools nationally
100.6 to 101.4	Next 20% of schools nationally
100.3 to 100.5	Next 15% of schools nationally
99.9 to 100.2	Middle 20% of schools nationally
99.5 to 99.8	Next 15% of schools nationally
98.5 to 99.4	Next 20% of schools nationally
98.4 and below	Bottom 5% of schools nationally

Source: DCSF Secondary School Achievement & Attainment Tables

PUPIL ACHIEVEMENT - GCSE

GCSE Performance, 2007 (End of KS4 pupils)

School	Number of students at the end of KS4	% of students at the end of KS4		% of students at the end of KS4 achieving							Average total point score per student
		Aged 14 or less	Aged 15	Level 2 (5+ A*-C grades)	5+ A*-C grades incl English and maths	Level 1 (5+ A*-G grades)	Level 2 in functional English and maths	Level 1 in functional English and maths	2 grades A*-C covering the KS4 science programme of study	At least one qualification (1+ A*-G)	
Archbishop Tenison's	87	0%	100%	55%	47%	92%	53%	99%	55%	100%	344.1
Bishop Thomas Grant	167	1%	99%	63%	48%	99%	50%	100%	34%	100%	407.3
Charles Edward Brooke	147	0%	99%	41%	27%	90%	32%	91%	27%	98%	315.3
Dunraven	189	1%	99%	71%	61%	100%	66%	100%	51%	100%	439
La Retraite	136	0%	100%	76%	57%	96%	57%	97%	46%	99%	414.8
Lilian Baylis	108	0%	100%	36%	27%	82%	27%	94%	33%	100%	287.2
London Nautical	102	0%	100%	63%	45%	98%	51%	91%	25%	100%	427.7
Norwood	133	0%	100%	32%	21%	95%	21%	95%	29%	99%	317.4
St Martin's	129	0%	100%	69%	47%	98%	47%	98%	43%	100%	395.1
Stockwell Park	159	0%	100%	67%	43%	75%	44%	80%	42%	97%	354.8
Lambeth ~	1357	-	-	56.0%	41.4%	89.3%	43.7%	90.9%	37.0%	98.4%	362.5
National~	-	-	-	62.0%	46.7%	91.7%	50.3%	90.8%	50.3%	98.9%	378.1

Source: DCSF Secondary School Achievement & Attainment Tables

~ Includes special schools

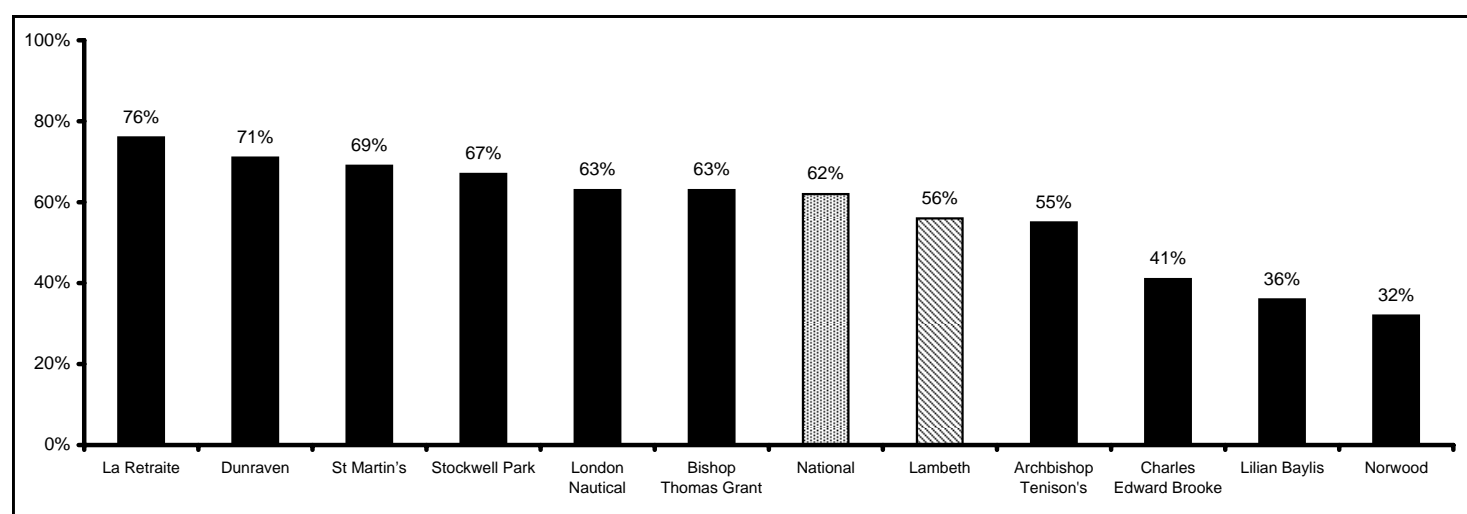
Pupils Achieving 5+ A*-C Grades by School, 1998-2007

School	1998	1999	2000	2001	2002	2003	2004	2005	2006	2007
Archbishop Tenison's	23%	22%	24%	35%	56%	43%	60%	54%	54%	55%
Bishop Thomas Grant	42%	42%	42%	37%	29%	42%	47%	48%	52%	63%
Charles Edward Brooke	27%	30%	27%	40%	36%	30%	43%	45%	44%	41%
Dunraven	31%	36%	43%	43%	55%	53%	68%	73%	71%	71%
La Retraite	48%	55%	56%	55%	61%	71%	61%	63%	74%	76%
Lilian Baylis	13%	12%	16%	18%	6%	16%	24%	36%	31%	36%
London Nautical	46%	47%	41%	45%	47%	51%	46%	62%	80%	63%
Norwood	21%	17%	17%	19%	33%	28%	36%	34%	38%	32%
St Martin's	30%	43%	40%	54%	59%	58%	56%	72%	74%	69%
Stockwell Park	13%	16%	11%	29%	26%	39%	54%	53%	55%	67%
Lambeth	28.8%	31.9%	31.7%	35.9%	40.1%	41.7%	48.1%	52.3%	54.9%	56.0%

Source: DCSF Secondary School Achievement & Attainment Tables (formerly Performance Tables)

Data from 2005 onwards relates to all pupils who took examinations at the End of KS4, irrespective of age. All figures prior to 2005 relate to the achievement of pupils aged 15 only.

Pupils Achieving 5+ A*-C GCSE Grades by School, 2007



Source: DCSF Secondary School Achievement & Attainment Tables

PUPIL ACHIEVEMENT - GCSE

Pupils Achieving 5+ A* - C Grades 1988 & 1995 - 2007 (%)

Year	Lambeth	Inner London	National
1988	13.7%	14.5%	n/a
1995	22.4%	27.8%	43.5%
1996	25.1%	26.3%	44.5%
1997	28.6%	32.0%	45.1%
1998	28.8%	32.4%	46.3%
1999	31.9%	34.1%	47.9%
2000	31.7%	36.3%	49.2%
2001	35.9%	39.0%	50.0%
2002	40.1%	n/a	51.6%
2003	41.7%	43.5%	52.9%
2004	48.1%	47.2%	53.7%
2005	52.3%	50.2%	56.3%
2006	54.9%	53.3%	58.5%
2007	56.0%	56.5%	62.0%

Source: DCSF Achievement & Attainment Tables & DCSF Statistical First Releases

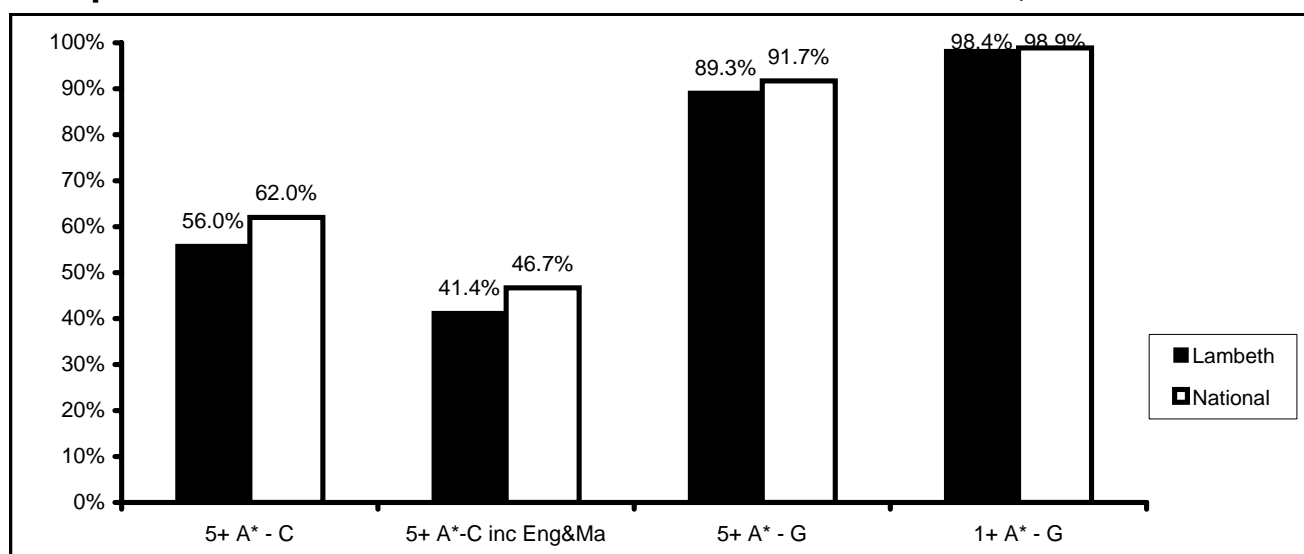
Data from 2005 onwards relates to all pupils who took examinations at the End of KS4, irrespective of age. All figures prior to 2005 relate to the achievement of pupils aged 15 only.

Comparison of Lambeth and National Results 2005 - 2007

Indicator	2005		2006		2007		Difference 2005-2007	
	Lambeth	National	Lambeth	National	Lambeth	National	Lambeth	National
5+ A* - C	52.3%	56.3%	54.9%	58.5%	56.0%	62.0%	3.7%	5.7%
5+ A*-C inc Eng&Ma	37.2%	44.3%	41.4%	45.3%	41.4%	46.7%	4.2%	2.4%
5+ A* - G	89.3%	89.0%	89.3%	89.4%	89.3%	91.7%	0.0%	2.7%
1+ A* - G	96.8%	96.4%	98.4%	96.7%	98.4%	98.9%	1.6%	2.5%

Sources: Research and Statistics Unit GCSE Analyses & DCSF Achievement & Attainment Tables

Comparison of Lambeth and National GCSE Performance, 2007



Sources: Research and Statistics Unit GCSE Analyses & DCSF Achievement & Attainment Tables

PUPIL ACHIEVEMENT - GCSE

GCSE Performance, 2006 & 2007

Performance by Ethnic Group

Ethnic Background	2006				2007			
	5+ A* -C	5+ A* -G	1+ A* - G	Pupils	5+ A* -C	5+ A* -G	1+ A* - G	Pupils
African	57%	96%	99%	354	65%	94%	99%	323
Any Other Group	59%	97%	100%	34	53%	83%	100%	36
Asian Other	64%	100%	100%	11	74%	95%	100%	19
Bangladeshi	58%	96%	100%	26	71%	100%	100%	17
Black Other	56%	89%	98%	81	57%	92%	99%	142
Caribbean	52%	90%	98%	296	44%	88%	98%	299
Chinese	76%	100%	100%	25	73%	91%	91%	22
Greek	50%	100%	100%	2	33%	100%	100%	3
Gypsy/Roma	n/a	n/a	n/a	0	0%	75%	75%	4
Indian	93%	100%	100%	14	69%	100%	100%	16
Mixed Other	61%	100%	100%	28	58%	91%	98%	43
Mixed White/Asian	88%	100%	100%	8	80%	80%	100%	5
Mixed White/Black African	67%	83%	100%	6	77%	92%	92%	13
Mixed White/Black Caribbean	56%	92%	97%	39	42%	77%	100%	43
Pakistani	58%	100%	100%	12	40%	100%	100%	10
Portuguese	33%	92%	100%	60	47%	88%	99%	72
Turkish	83%	100%	100%	6	100%	100%	100%	5
Vietnamese	83%	100%	100%	6	75%	88%	100%	8
White British	52%	93%	98%	242	50%	87%	97%	246
White Irish	45%	73%	100%	11	88%	100%	100%	8
White Other	51%	92%	99%	79	49%	86%	97%	72

Performance by Stage of English Fluency

English Fluency	2006				2007			
	5+ A* -C	5+ A* -G	1+ A* - G	Pupils	5+ A* -C	5+ A* -G	1+ A* - G	Pupils
Stage 1	8%	25%	100%	12	0%	43%	43%	7
Stage 2	23%	64%	91%	47	28%	66%	97%	29
Stage 3	34%	88%	98%	177	38%	92%	99%	162
Stage 4	65%	97%	100%	390	73%	96%	100%	381
English only	52%	88%	97%	799	51%	88%	97%	828

Performance by Free School Meals

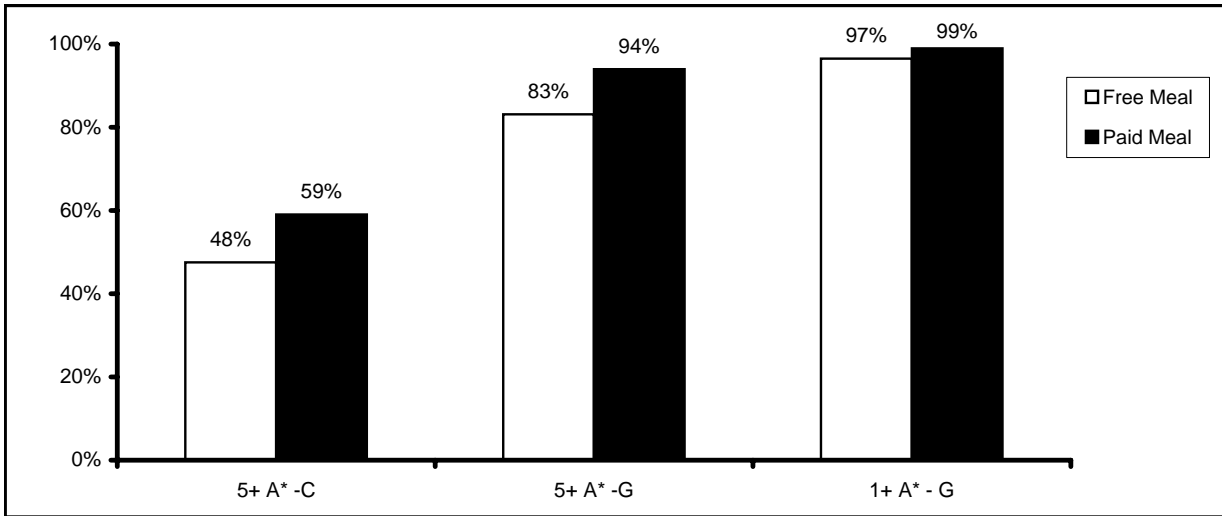
Meal Status	2006				2007			
	5+ A* -C	5+ A* -G	1+ A* - G	Pupils	5+ A* -C	5+ A* -G	1+ A* - G	Pupils
Free Meal	43%	89%	98%	480	48%	83%	97%	545
Paid Meal	62%	96%	99%	865	59%	94%	99%	862

Source: Research and Statistics Unit GCSE Analyses

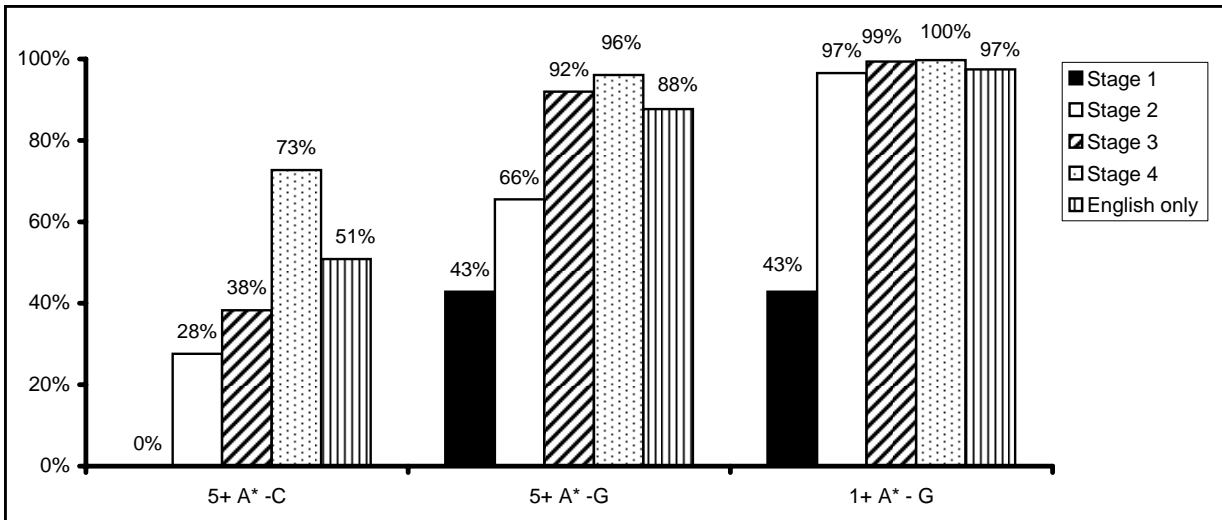
PUPIL ACHIEVEMENT - GCSE

GCSE Performance by Socio-Economic Indicators, 2007

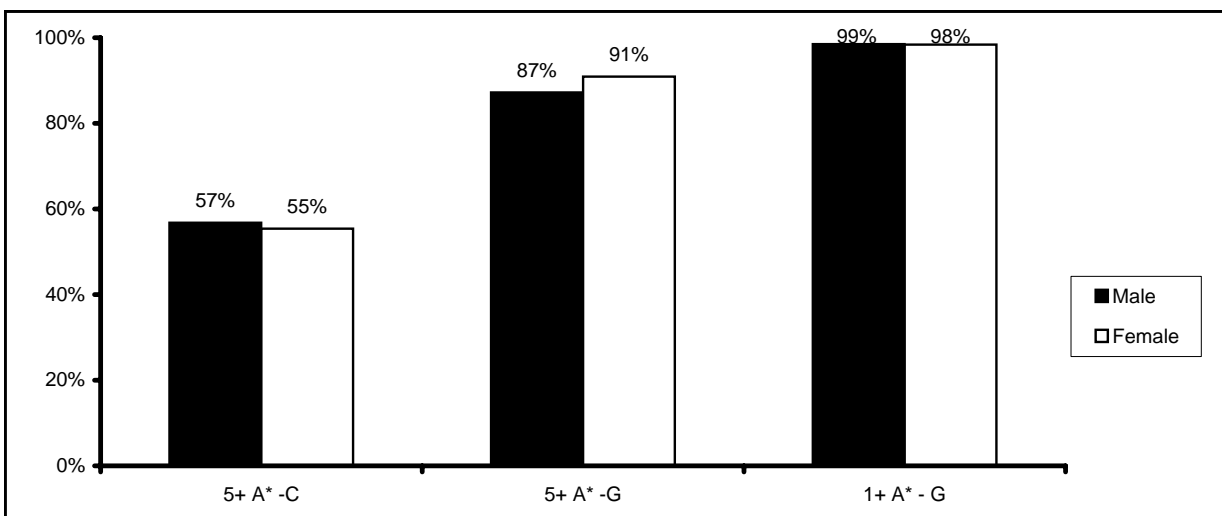
Performance by Meals Status



Performance by Fluency in English



Performance by Gender



Source: Research and Statistics Unit GCSE Analyses

PUPIL ACHIEVEMENT - GCSE

Key Stage 2 to GCSE Contextual Value Added 2007

School	Cohort	CVA Measure	Limit of KS2-GCSE CVA Confidence Intervals		Coverage	Ave No of Quals
			Upper Limit	Lower Limit		
Archbishop Tenison's	87	1000.1	1012.9	987.2	95%	8.8
Bishop Thomas Grant	167	1029.4	1039.7	1019.1	83%	10.9
Charles Edward Brooke	147	999.1	1010.1	988.0	80%	9.2
Dunraven	189	1006.8	1015.9	997.7	95%	11.1
La Retraite	136	996.6	1007.3	985.8	92%	10.1
Lilian Baylis	108	993.9	1006.9	980.9	75%	8.8
London Nautical	102	1004.0	1016.0	992.0	95%	12
Norwood	133	1013.6	1025.0	1002.2	82%	9.8
St Martin-in-the-Fields	129	1025.9	1036.6	1015.3	98%	9.7
Stockwell Park	159	1034.9	1045.8	1023.9	75%	9.8
Lambeth	1357	1013.4	n/a	n/a	n/a	n/a

Source: DCSF Secondary School Achievement & Attainment Tables

n/a = not available

Terms used and their definitions

Cohort - This relates to the total number of pupils at the end of Key Stage 4 in 2007, irrespective of their age. This figure includes pupils who did not attempt or pass any GCSEs or equivalent.

The KS2-GCSE contextual value added measure - This is a new measure introduced in 2006 whereby scores are based on individual pupil progress between the KS2 tests and GCSE capped at a pupil's best eight GCSE or equivalent results, combined with other factors that are outside a school's control. For example, a CVA score will be adjusted taking into account factors such as gender, SEN, pupil mobility and ethnic background.

Confidence Intervals - This refers to the range of scores (defined by an upper and lower limit) within which we can be statistically confident the CVA measure represents the overall effectiveness of a school. This relates to the size of the cohort i.e. the smaller the cohort, the larger the range will be and the less confidence can be placed on the CVA measure as an indicator of whether a school's effectiveness is significantly above or below average.

The coverage indicator - This shows the proportion of pupils at the end of KS4 (irrespective of their age) who were included in the value added calculation. It also gives some indication of schools where the value added measures may be unrepresentative. A low indicator means information was not available to calculate the value added for a large proportion of a school's pupils, and so these pupils could not be included in the calculation.

Average Number of Qualifications - This is the average number of GCSE and equivalent qualifications taken by students included in the Key Stage 2 to GCSE contextual value added calculation.

How to interpret a school's value added measure

Scores above 1000 represent schools where students made more progress, on average, than pupils nationally. Scores below 1000 represent schools where students made less progress.

For each of the KS4 CVA measures, a measure of 1006 means that on average each of the school's pupils achieved the equivalent of one GCSE grade higher in one subject than the average attained by similar pupils. A score of 1048 means that on average each pupil achieved one GCSE grade higher in each of their best eight subjects than the average attained by similar pupils. Conversely, a score of 994 means that the school's pupils achieved one grade lower in one subject on average, while a score of 952 means that pupils achieved on average one grade lower in each of their best eight subjects.

The table below shows where schools can be placed nationally compared to other schools, based on their CVA measure.

1029.09 and above	Top 5% of schools nationally
1011.16 to 1029.08	Next 20% of schools nationally
1005.01 to 1011.15	Next 15% of schools nationally
997.11 to 1005.00	Middle 20% of schools nationally
990.91 to 997.10	Next 15% of schools nationally
973.82 to 990.90	Next 20% of schools nationally
973.81 and below	Bottom 5% of schools nationally

Source: DCSF Secondary School Achievement & Attainment Tables

PUPIL ACHIEVEMENT - A/AS LEVEL

GCE/VCE A/AS or Equivalent Achievement 2007 (all Level 3 Qualifications), QCA Points Tariff

	Number of Students Aged 16-18	Number Entered	QCA APS per Student	QCA APS per Examination Entry
Archbishop Tenison's	36	14	485.9	171.1
Charles Edward Brooke	88	11	604.1	182.1
Dunraven	219	89	636.9	194.6
La Retraite	139	42	718.9	196.7
Lambeth College	1764	158	513.1	195.4
London Nautical	87	32	579.8	194.3
NL6	-	57	561.4	186.3
St Martin-in-the-Fields	140	41	582.4	198.2
Lambeth	2473	387	578.4	194.3
Inner London Average	-	-	618.8	202.4
LSC Area	-	-	634.5	204.6
National	-	-	731.1	207.5

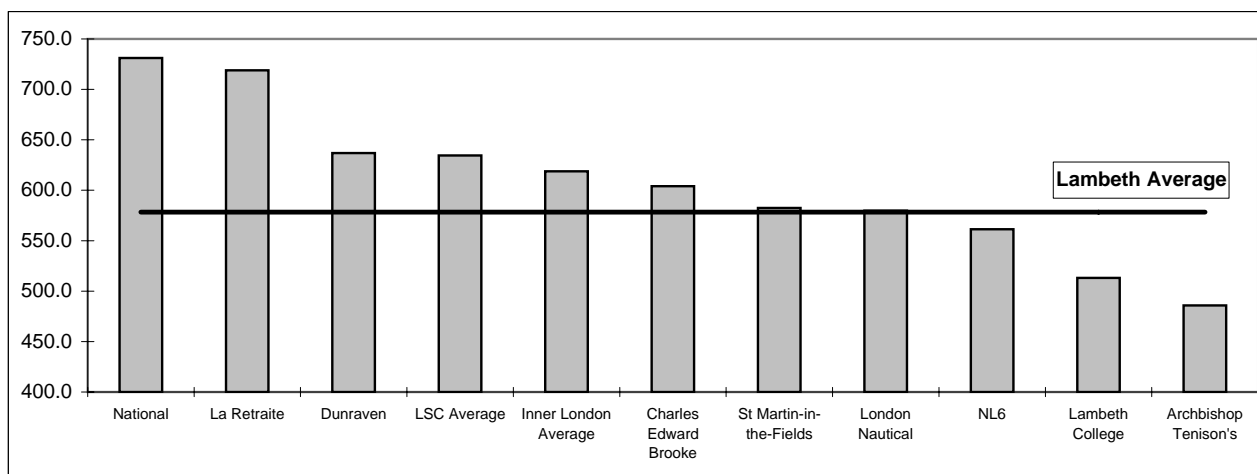
- Data not available

QCA APS = Average Points Score. This is a relatively new method of scoring qualifications to enable the inclusion of a wider range of vocational options. Each qualification is allocated an 'equivalence' which relates to the size and challenge a qualification poses compared to an A Level.

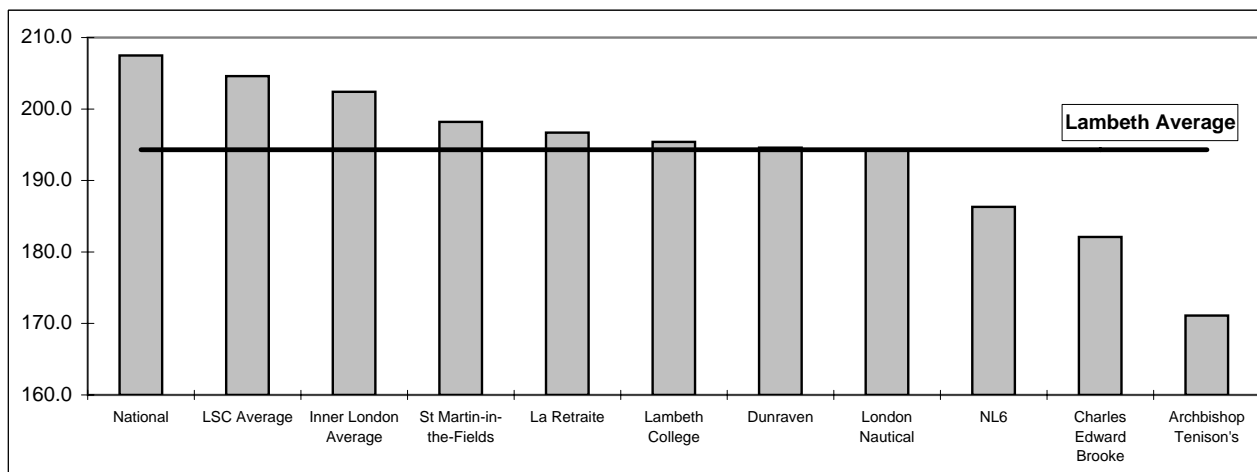
NL6 = North Lambeth Sixth Form Centre. NL6 are not included in the Lambeth Number Entered total, as this would mean double counting the pupils who are already on roll at one of the three participating schools.

LSC Area refers to the London Central LSC Area.

QCA Average Points Score per Student by Establishment, 2007



QCA Average Points Score per Entry by Establishment, 2007



Sources: DCSF School & College Achievement & Attainment Tables (formerly Performance Tables)

PUPIL ACHIEVEMENT - A/AS LEVEL

GCE/VCE A/AS or Equivalent Achievement (all Level 3 Qualifications), QCA Points Tariff 2006 & 2007

	QCA APS per Student		
	2006	2007	Change 2006-07
Archbishop Tenison's	379.0	485.9	106.9
Charles Edward Brooke	515.4	604.1	88.7
Dunraven	631.7	636.9	5.2
La Retraite	762.1	718.9	-43.2
Lambeth College	505.2	513.1	7.9
London Nautical	411.3	579.8	168.5
NL6	432.8	561.4	128.6
St Martin-in-the-Fields	411.8	582.4	170.6
Lambeth	547.6	578.4	30.8
Inner London	606.5	618.8	12.3
LSC Area	620.7	634.5	13.8
National	721.5	731.1	9.6
LA Gap to Inner London	-58.9	-40.4	
LA Gap to LSC Area	-73.1	-56.1	
LA Gap to National	-173.9	-152.7	

	QCA APS per Examination Entry		
	2006	2007	Change 2006-07
Archbishop Tenison's	138.7	171.1	32.4
Charles Edward Brooke	179.3	182.1	2.8
Dunraven	190.7	194.6	3.9
La Retraite	197.6	196.7	-0.9
Lambeth College	197.2	195.4	-1.8
London Nautical	153	194.3	41.3
NL6	157.1	186.3	29.2
St Martin-in-the-Fields	172.6	198.2	25.6
Lambeth	187.9	194.3	6.4
Inner London	201.0	202.4	1.4
LSC Area	202.9	204.6	1.7
National	206.2	207.5	1.3
LA Gap to Inner London	-13.1	-8.1	
LA Gap to LSC Area	-15.0	-10.3	
LA Gap to National	-18.3	-13.2	

LSC Area refers to the London Central LSC Area

Prior to 2006 the UCAS points tariff was used to show attainment at A/AS level. The QCA tariff was introduced in 2006 to enable all level 3 qualifications to be reported, not just A/AS levels. Each qualification is calculated as an equivalence to an A-level and allocated a comparable point score.

The table below illustrates the equivalence concept, and shows the point score for each grade.

A-level Grade	QCA Points	BTEC National Cert (equivalent to 2 A-levels)	QCA Points
A	270	DD	540
B	240	DM	480
C	210	MM	420
D	180	MP	360
E	150	PP	300

Source: DCSF School & College Achievement & Attainment Tables

PUPIL ACHIEVEMENT - KEY STAGE TRENDS

Key Stage 1 - 2001 to 2007 Level 2B+

		Lambeth				National			
		Reading	Writing	Maths	Average	Reading	Writing	Maths	Average
Boys	2001	57%	46%	69%	57%	64%	51%	75%	63%
	2002	57%	47%	70%	58%	64%	52%	75%	64%
	2003	55%	48%	64%	56%	64%	54%	73%	64%
	2004	58%	52%	67%	59%	65%	53%	75%	64%
	2005	61%	49%	65%	58%	67%	54%	73%	74%
	2006	56%	45%	62%	54%	66%	52%	72%	63%
	2007	60%	46%	65%	57%	65%	51%	73%	63%
Girls	2001	70%	63%	73%	69%	74%	66%	76%	72%
	2002	68%	60%	72%	67%	74%	67%	76%	72%
	2003	63%	60%	62%	62%	75%	70%	74%	73%
	2004	68%	64%	71%	68%	76%	70%	77%	74%
	2005	71%	60%	65%	65%	78%	70%	75%	74%
	2006	69%	62%	67%	66%	77%	69%	74%	73%
	2007	71%	61%	67%	66%	77%	67%	75%	73%
All Pupils	2001	63%	55%	71%	63%	69%	59%	75%	68%
	2002	62%	54%	71%	62%	69%	60%	76%	68%
	2003	59%	54%	63%	59%	69%	62%	73%	68%
	2004	63%	58%	69%	63%	70%	62%	76%	69%
	2005	66%	54%	65%	62%	72%	62%	74%	69%
	2006	63%	54%	65%	61%	71%	60%	73%	68%
	2007	65%	53%	66%	62%	71%	59%	74%	68%

Key Stage 2 - 2001 to 2007 Level 4+

		Lambeth				National			
		English	Maths	Science	Average	English	Maths	Science	Average
Boys	2001	62%	66%	82%	70%	70%	71%	87%	76%
	2002	65%	68%	81%	71%	70%	73%	86%	76%
	2003	65%	65%	78%	69%	70%	73%	86%	76%
	2004	69%	68%	79%	72%	72%	74%	86%	77%
	2005	69%	68%	80%	72%	74%	76%	86%	79%
	2006	71%	68%	80%	73%	74%	76%	86%	79%
	2007	73%	72%	84%	76%	76%	78%	87%	80%
Girls	2001	74%	66%	85%	75%	80%	70%	88%	79%
	2002	70%	66%	80%	72%	79%	73%	87%	80%
	2003	77%	67%	82%	75%	81%	72%	87%	80%
	2004	82%	73%	82%	79%	83%	74%	86%	81%
	2005	83%	69%	83%	78%	84%	75%	87%	82%
	2006	84%	72%	85%	81%	85%	75%	87%	82%
	2007	82%	70%	86%	79%	85%	76%	88%	83%
All Pupils	2001	68%	66%	84%	73%	75%	71%	87%	78%
	2002	68%	67%	81%	72%	75%	73%	86%	78%
	2003	72%	67%	81%	73%	75%	73%	87%	78%
	2004	76%	70%	80%	75%	78%	74%	86%	79%
	2005	76%	68%	82%	75%	79%	75%	86%	80%
	2006	78%	70%	83%	77%	79%	76%	87%	81%
	2007	77%	71%	85%	78%	80%	77%	88%	82%

Sources: Research & Statistics Unit Analyses & DCSF Statistical First Releases

PUPIL ACHIEVEMENT - KEY STAGE TRENDS

Key Stage 2 - 2001 to 2007 Level 5+

		Lambeth				National			
		English	Maths	Science	Average	English	Maths	Science	Average
Boys	2001	18%	24%	27%	23%	22%	27%	34%	28%
	2002	21%	26%	32%	26%	24%	30%	38%	31%
	2003	20%	25%	33%	26%	21%	32%	40%	31%
	2004	21%	26%	32%	26%	20%	32%	42%	31%
	2005	16%	25%	38%	26%	21%	33%	48%	34%
	2006	27%	29%	36%	30%	26%	35%	45%	35%
	2007	24%	30%	38%	31%	28%	35%	46%	36%
Girls	2001	29%	23%	30%	27%	35%	23%	34%	31%
	2002	26%	21%	30%	26%	34%	25%	37%	32%
	2003	33%	23%	35%	30%	33%	26%	41%	33%
	2004	27%	21%	30%	26%	32%	28%	42%	34%
	2005	26%	25%	39%	30%	33%	28%	46%	36%
	2006	39%	26%	39%	34%	39%	31%	46%	39%
	2007	33%	23%	39%	32%	39%	30%	46%	38%
All Pupils	2001	24%	23%	28%	25%	29%	25%	34%	29%
	2002	23%	24%	31%	26%	29%	28%	38%	32%
	2003	26%	24%	34%	28%	27%	29%	41%	32%
	2004	26%	27%	36%	30%	27%	31%	43%	34%
	2005	21%	25%	38%	28%	27%	31%	47%	35%
	2006	33%	28%	37%	33%	32%	33%	46%	37%
	2007	29%	26%	39%	31%	34%	32%	46%	37%

Key Stage 3 - 2001 to 2007 Level 5+

		Lambeth				National			
		English	Maths	Science	Average	English	Maths	Science	Average
Boys	2001	42%	47%	47%	45%	57%	65%	66%	63%
	2002	51%	55%	57%	54%	59%	67%	67%	64%
	2003	55%	61%	59%	58%	62%	70%	68%	67%
	2004	65%	67%	56%	63%	64%	72%	65%	67%
	2005	67%	70%	65%	67%	67%	73%	69%	70%
	2006	68%	73%	64%	68%	65%	76%	71%	71%
	2007	63%	69%	62%	65%	68%	75%	72%	72%
Girls	2001	58%	45%	45%	49%	73%	67%	66%	69%
	2002	65%	54%	53%	57%	76%	68%	67%	70%
	2003	66%	63%	59%	63%	76%	72%	69%	72%
	2004	72%	64%	56%	64%	78%	74%	67%	73%
	2005	74%	61%	55%	63%	81%	74%	70%	75%
	2006	76%	69%	62%	69%	80%	77%	73%	77%
	2007	74%	73%	65%	71%	81%	76%	73%	77%
All Pupils	2001	51%	46%	46%	48%	65%	66%	66%	66%
	2002	59%	55%	55%	56%	67%	67%	67%	67%
	2003	61%	62%	59%	61%	69%	71%	68%	69%
	2004	69%	66%	56%	64%	71%	73%	66%	70%
	2005	71%	65%	59%	65%	74%	74%	70%	73%
	2006	72%	71%	63%	69%	73%	77%	72%	74%
	2007	69%	72%	64%	68%	74%	76%	73%	74%

Sources: Research & Statistics Unit Analyses & DCSF Statistical First Releases

PUPIL ACHIEVEMENT - KEY STAGE TRENDS

Key Stage 3 - 2001 to 2007 Level 6+

		Lambeth				National			
		English	Maths	Science	Average	English	Maths	Science	Average
Boys	2001	18%	26%	17%	20%	25%	42%	34%	34%
	2002	16%	33%	21%	23%	25%	45%	34%	35%
	2003	17%	37%	28%	27%	28%	49%	41%	39%
	2004	32%	48%	26%	35%	27%	52%	34%	38%
	2005	27%	45%	31%	34%	28%	53%	38%	40%
	2006	27%	54%	35%	39%	27%	57%	41%	42%
	2007	17%	50%	30%	32%	26%	57%	41%	41%
Girls	2001	24%	23%	17%	21%	39%	43%	33%	38%
	2002	29%	29%	19%	26%	40%	45%	32%	39%
	2003	26%	36%	27%	30%	42%	50%	40%	44%
	2004	30%	41%	25%	32%	41%	52%	35%	43%
	2005	33%	36%	21%	30%	42%	53%	36%	44%
	2006	36%	48%	30%	38%	42%	57%	41%	47%
	2007	28%	47%	29%	35%	40%	55%	41%	45%
All Pupils	2001	21%	24%	17%	21%	32%	42%	34%	36%
	2002	23%	31%	20%	25%	32%	45%	33%	37%
	2003	22%	36%	28%	29%	35%	49%	40%	41%
	2004	30%	44%	26%	33%	34%	52%	34%	40%
	2005	31%	40%	25%	32%	35%	53%	37%	42%
	2006	32%	50%	32%	38%	35%	57%	41%	44%
	2007	23%	48%	29%	33%	33%	56%	41%	43%

GCSE - 2001 to 2007 Key Indicators

		Lambeth				National			
		5+A*-C	5+A*-C incl Eng&Ma	5+A*-G	1+A*-G	5+A*-C	5+A*-C incl Eng&Ma	5+A*-G	1+A*-G
Boys	2001	31%	--	78%	93%	45%	--	87%	94%
	2002	36%	--	84%	94%	46%	--	87%	94%
	2003	38%	--	84%	95%	48%	--	86%	94%
	2004	45%	--	87%	97%	49%	--	86%	95%
	2005	50%	35%	85%	96%	51%	41%	87%	96%
	2006	54%	40%	86%	98%	54%	42%	87%	96%
	2007	57%	43%	87%	99%	58%	42%	90%	99%
Girls	2001	40%	--	91%	98%	55%	--	91%	97%
	2002	43%	--	89%	97%	57%	--	91%	97%
	2003	45%	--	91%	97%	58%	--	92%	97%
	2004	50%	--	93%	98%	59%	--	91%	97%
	2005	54%	40%	92%	98%	61%	49%	92%	97%
	2006	56%	43%	92%	99%	63%	50%	92%	98%
	2007	55%	41%	91%	98%	66%	51%	94%	99%
All Pupils	2001	36%	--	85%	96%	50%	--	89%	95%
	2002	40%	--	87%	96%	52%	--	89%	95%
	2003	42%	--	88%	96%	53%	--	89%	95%
	2004	48%	--	90%	98%	54%	--	89%	96%
	2005	52%	38%	89%	97%	56%	45%	89%	96%
	2006	55%	42%	89%	98%	59%	46%	89%	97%
	2007	56%	41%	89%	98%	62%	47%	92%	99%

Sources: Research & Statistics Unit Analyses & DCSF Statistical First Releases

Data is not available in the 5+ A*-C incl Eng&Ma indicator prior to 2005.

LAMBETH TARGETS

LA Performance Targets 2008-09

Key Stage 2 - Expected Achievement

Test/Task	Target 2008-09
Level 4+ in both English and maths	73%
English 2 levels progress from KS1-2	86%
Maths 2 levels progress from KS1-2	83%

Key Stage 3 - Expected Achievement

Test	Target 2008-09
Level 5+ in both English and maths	68%
English 2 levels progress from KS2-3	40%
Maths 2 levels progress from KS2-3	58%
Level 5+ in Science	74%

GCSE - Expected Achievement

Indicator	Target 2008-09
5+ A*-C grades incl English & maths	51%
English 2 Levels progress from KS3-4	64%
Maths 2 Levels progress from KS3-4	51%

Source: LA Targets submission to DCSF

*APS = Average Points Score

The DCSF changed the target setting process in 2007 to a new range of indicators. Therefore comparison to previous years targets/actuals is not possible this year.

Prepared by Research and Statistics Unit
 International House
 Canterbury Crescent
 London SW9 7QE

Enquiries to Feyisa Demie, Anne Taplin, Rebecca Butler, Robert Tong, James
 McDonald or Colette Hutter

ISBN 978-0-9556433-2-3