

# Lambethtalk

PEOPLE • PLACES • EVENTS • DATES • CONTACTS • FEATURES

SUMMER SPECIAL 2022

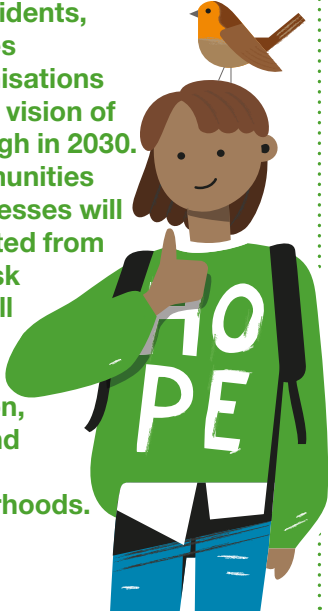


**Lambeth Country Show**  
**16 and 17 July** page 10-11



# Reaching our vision for a net-zero Lambeth by 2030

Lambeth's Climate Action Plan sets ambitious goals developed by our residents, businesses and organisations to reach a vision of our borough in 2030. Our communities and businesses will be protected from climate risk and we will live and work in low-carbon, healthy and thriving neighbourhoods.



National Theatre

**ADAPTATION** protecting our communities from climate risk

## GOALS

- Sustainably manage 10% of rainwater on impermeable surfaces
- Reduce heat risks through Heat Mitigation Plan
- Work with the community to reduce climate risk
- Reduce disparity in impacts of climate risk



Kings College London

**BUILDINGS AND ENERGY** developing low-carbon homes

## GOALS

- Retrofit buildings to EPC level C or higher
- Reach 100% renewable energy source provision through local area energy planning
- Retrofit existing buildings and ensure new development meets net zero standards
- Take action to eliminate fuel poverty



Low traffic neighbourhoods

**TRANSPORT** shifting to green and active travel

## GOALS

- Decrease motor traffic by 27%
- Allocate 25% of kerbside space to communities and businesses
- 85% of journeys made by green transport
- Zero direct emissions from deliveries



The Remakery

**WASTE, CONSUMPTION AND FOOD** building a zero-waste, local, circular economy

## GOALS

- Reduce consumption-based emissions by 2/3rds
- Build circular solutions into procurement
- Minimise waste to reach targets including 3-stream segregated waste
- Increase consumption of plant-based food



Wildflower meadows

**BIODIVERSITY & ENVIRONMENTAL QUALITY** cleaning air and greening spaces

## GOALS

- Naturalise 30% of land for wildlife
- Increase green coverage by 15%
- All new developments incorporate space for nature
- Reach World Health Organisation air quality targets

Read the goals in full and learn what to do to support climate action.





## in this issue...

Meet the Cabinet	4
The new Mayor of Lambeth	6
Cost of Living Support	8
Lambeth Country Show	10
Summer of food and fun	12
Child Friendly Lambeth	14
Let Lambeth bloom	15
Neighbourhood Champions	15

Cover story: Lambeth Country Show is coming back at Brockwell Park from 16 to 17 July.

For translation of articles in any other language, large print format, or to opt-out from receiving the magazine contact:  
[communications@lambeth.gov.uk](mailto:communications@lambeth.gov.uk)

# Welcome

Dear residents,

People in Lambeth are really feeling the effects of the cost of living crisis, with significantly higher bills set to cause further concern over the coming months. We are absolutely committed to supporting people through this challenging time, which is why we have announced a major cost of living package to help tackle the financial pressures people in Lambeth are facing.

We are investing £4.2 million which will support a range of targeted measures to alleviate the cost of living – from free school meals during half term and summer holidays for families on low incomes to providing direct payments to households struggling to pay their bills to working with Lambeth's food banks.

This support package will help tens of thousands of people across Lambeth – building on the thousands we helped with food, fuel, and housing costs over the winter months, and the almost 7,000 households which have had their council tax bills reduced to nil, as part of our council tax support expansion. We're committed to doing everything we can to help Lambeth residents through these difficult times – and you can find out how you can get help in this edition of Lambeth Talk.

**CLlr Claire Holland, Leader of Lambeth Council**



## Ready Steady Go!

**FREE sessions to help families achieve a healthier diet and a more active lifestyle.**

**New programmes will be starting in September 2022.**

To register or make a referral please use our online link at [lambeth.gov.uk/ready-steady-go](https://lambeth.gov.uk/ready-steady-go)

Contact the team on **020 7926 0619** or email [readysteadygo@lambeth.gov.uk](mailto:readysteadygo@lambeth.gov.uk)



  
**Lambeth**



# Lambeth's New Cabinet

The new team that will lead Lambeth Council following the local elections has been confirmed following a vote of all councillors.

The new Cabinet, put forward by Council Leader Claire Holland after she was re-elected leader of the Labour group, was approved at the annual meeting of the council last month.

The eleven-member team, described by Cllr Holland as “the most diverse Cabinet we have ever had”, will be supported by four deputy cabinet members.

“I’m very proud that Lambeth residents put their trust in Labour at the elections with an increased mandate,” Cllr Holland, said. “And now we are putting together the team to deliver our commitments to them.

“This is the most diverse Cabinet we have ever had and I’m proud that it really represents the borough we all love. This new Cabinet is focused on delivering for the people of Lambeth, addressing crucial issues including the cost of living crisis, our ambitious goals to tackle the climate crisis and reducing inequality.

“This administration will be on the side of Lambeth residents in tackling these challenges and our new Cabinet will lead on that.

“In particular, we have put in place roles with specific focus on tackling the cost of living crisis, making Lambeth more equal and strengthening our communities –

alongside my continued focus on leading Lambeth’s efforts to tackle the climate crisis.

“I believe this Cabinet will put the council on a strong footing to address these challenges, with portfolios designed to work alongside our residents, voluntary sector, our public sector partners and businesses to achieve our shared goals.”

## Lambeth’s new Cabinet

### Cllr Claire Holland, Leader of the Council

Responsible for setting the overall political and strategic direction for the council, as well as managing the council’s relations with key

“ This administration will be on the side of Lambeth residents in tackling these challenges and our new Cabinet will lead on that.”

**Cllr Claire Holland, Leader of the Council**

stakeholders, partners and investors and holding the council's Chief Executive to account.

Cllr Holland is also responsible for driving forward the council's response to the climate and ecological crisis, ensuring that this response is centred on the administration's commitment to equity and increasing the economic resilience and wellbeing of Lambeth's residents as part of a just transition to a net-zero future for the borough.

**Cllr Jacqui Dyer, Deputy Leader (Inclusive Economy and Equalities)**

Leads on spreading opportunities and building Lambeth's economic resilience to make the borough the best place to live, work and do business for everyone, regardless of their background.

**Cllr Danny Adilypour, Deputy Leader (Sustainable Growth and New Homes)**

Lead member for planning and leads on strategic infrastructure and the delivery of new and genuinely affordable homes for Lambeth residents.

**Cllr Rezina Chowdhury, Cabinet Member for Sustainable Lambeth and Clean Air**

Responsible for action on the climate and ecological emergency and in advancing sustainable urban mobilities in Lambeth. She will oversee the delivery of the

borough's Climate Action Plan and Corporate Carbon Reduction Plan.

**Cllr Ben Kind, Cabinet Member for Children and Young People**

Cllr Kind is responsible for delivering Lambeth's commitment to giving young people the best start in life. That includes the statutory role of lead member for children's services, powers and duties in relation to looked-after children, and the commitment to improving the care of the borough's most vulnerable and at risk children and young people.

**Cllr Donatus Anyanwu, Cabinet Member for Stronger Communities, Leisure and Sport**

Cllr Anyanwu is responsible for leading on the council's relationship with and support to the voluntary and community sector, as well as being responsible for the strategic approach to Lambeth's cultural, library and leisure services.

**Cllr Jim Dickson and Cllr Marcia Cameron, Cabinet Member for Healthier Communities**

Responsible for working to ensure safe, efficient and effective public health and adult social services that are as joined-up as possible with the local NHS.

**Cllr Maria Kay, Cabinet Member for Better Homes and Reducing Homelessness**

Responsible for the delivery of housing management and

homelessness services, including working with tenants and leaseholders, improving the rights and conditions for private renters, and delivering better and decent homes for all tenants.

**Cllr David Amos, Cabinet Member for Finance and Cost of Living**

Responsible for oversight of the council's strategic financial management and monitoring performance. This includes setting a balanced budget and monitoring the delivery of the capital investment programme.

**Cllr Mahamed Hashi, Cabinet Member for Safer Communities**

Keeping Lambeth residents safe is the council's top priority: Cllr Hashi will lead on our work with our communities, the police, our partners and the Mayor of London to combat crime in Lambeth.

**Deputy Cabinet Members**

**Cllr Irfan Mohammed, Deputy Cabinet Member for Businesses**

**Cllr Marianna Masters, Deputy Cabinet Member for Children and Young People**

**Cllr Nanda Manley-Browne, Deputy Cabinet Member for Finance and Cost of Living**

**Cllr Tim Windle, Deputy Cabinet Member for Housing and Neighbourhoods**



# From a Nigerian village to Mayor of Lambeth

**Lambeth's new mayor has recounted her journey from a Nigerian village to the first citizen of a London borough as she took over the historic role for the coming year.**



Cllr Pauline George said it was “an honour and a privilege” to become mayor, after her selection was confirmed by colleagues at a Full Council meeting in May.

“I am here because of my relentless hard work,” Cllr George told the meeting. “My mother used to say ‘you can get it if you really want; but you must try, try and try’. I am proud to be the first female, British Nigerian mayor of the London Borough of Lambeth.”

The new Mayor said she had started out as “a princess from a very small village in Nigeria”, and later spent time selling yams on the streets of Lagos. She has now worked in the NHS for decades, as a midwife and specialist nurse, and worked on the front line as an

intensive care nurse throughout the coronavirus pandemic.

Cllr George recalled: “We had no electricity or piped-in water. When things went bad for my parents ... I assisted my mum with hawking yam on the streets of Lagos with no shoes on my feet. The daughter of a yam-seller; now I am the first citizen of Lambeth.”

Nominating Cllr George, her fellow Herne Hill & Loughborough Junction ward councillor Jim Dickson, said she had shown “all the great qualities that will make her a great Mayor”.

He added: “She has a great empathy with residents. Pauline first came to the UK in the mid-70’s from Nigeria. She successfully qualified as a Nurse. She also

completed a law qualification. “Nowhere was her work to our community more dedicated than during the Covid crisis. She gave us as a borough dedicated health. I say as a colleague, I’m proud to move your nomination as Mayor. I know you’ll do a brilliant job.”

Cllr Nanda Manley-Browne said: “As a Herne Hill Councillor she has fought against knife and gun crime. She is a radio and TV presenter. She provides advice about health issues. She is a strong and visible advocate for her residents. She is a woman of integrity. Hearty congratulations on this occasion. You are a mighty woman of valour.”

The meeting also endorsed the nomination of Cllr Sarbaz Barznji as Deputy Mayor.

ADVERTISEMENT



# NO VOTE, NO SAY.

You must be registered to vote at elections.

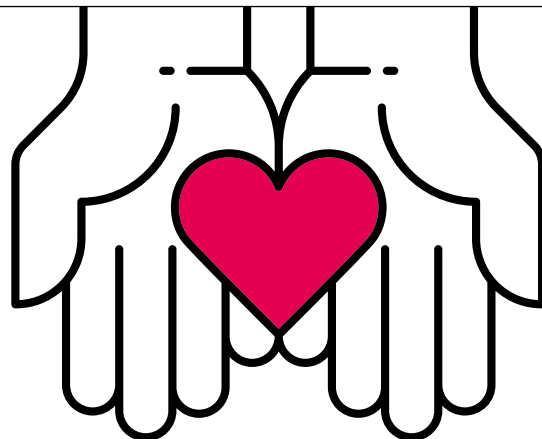
Register online at [gov.uk/register-to-vote](https://gov.uk/register-to-vote)

For information about postal and proxy voting visit  
[lambeth.gov.uk/vote](https://lambeth.gov.uk/vote)



  
**Lambeth**

# Here for you.



If you are struggling to pay your bills or to afford food, we can help.

**The Household Support Scheme is available to you if you are in an emergency are:**

- Struggling to pay your bills or to afford food
- Impacted in any way by the increasing cost of living, including needing support with food or meeting urgent bills
- Impacted in any way by the Covid-19 crisis, for example, a loss of work or change in economic situation
- In need of support to prevent you entering institutional or residential care
- A family or individual under exceptional pressure
- Setting up home as part of a planned resettlement

## How to apply

**All applications for the Household Support Scheme are made online.** If you need support with making an application your support worker can make it on your behalf. If this is not possible we can help you complete the form by phone. Email us at [ESSteamb@lambeth.gov.uk](mailto:ESSteamb@lambeth.gov.uk) giving a contact phone number and we will call you back.



To find out if you qualify for the scheme please visit  
**[lambeth.gov.uk/HouseholdSupportScheme](https://lambeth.gov.uk/HouseholdSupportScheme)**





# How to access financial support quickly.

Cost of living increases are a concern for households across the country and many of our residents may require support. If you are concerned, you should seek advice from trusted experts. The following advice services can provide free independent, confidential, impartial advice about debt, money, and welfare benefits (including a benefit check).



Cllr David Amos, Lambeth's Cabinet Member for Finance and Cost of Living, said:

"In Lambeth where such a high proportion of our residents are already struggling to pay for basic needs like food and fuel, we can't stand by and allow this crisis to let rip across the borough. We have recently agreed a package of support that will help the people in our communities who are suffering the most. This will involve the council sending funds through Post Office payout to eligible residents. It is part of our commitment as an administration to do everything we can to shield everyone, particularly the most vulnerable from the worst effects of this crisis. We will also

continue to lobby the government in Westminster to bring in much more support to help families in Lambeth through this cost of living crisis."

## Services currently available online, or by telephone

### Citizens Advice Merton and Lambeth (CAML)

Telephone: Lambeth Adviceline  
03444 889 625

### Brixton Advice Centre

Telephone: 020 7095 5908  
(Monday to Thursday 10am – 3pm)

### Centre 70 (C70)

Telephone: 020 8670 0070  
(Monday to Friday 10am – 4pm)  
Email: [enquiries@centre70.org.uk](mailto:enquiries@centre70.org.uk)

## Contact our Rents Teams for more information:

Telephone: 020 7926 8790 (Monday to Friday 9am – 5pm) Email: [RentsTeam@lambeth.gov.uk](mailto:RentsTeam@lambeth.gov.uk)

## Online tools available for accessing support

To check what benefits you're entitled to, use a free benefits calculator. There are several available if you search online, including:

**StepChange** has a budgeting guide on its website, which includes working out your total income, making a list of everything you spend and then deducting what you spend from your income. Visit: [www.stepchange.org/how-we-help/benefits-calculator](http://www.stepchange.org/how-we-help/benefits-calculator)

**Entitledto** [www.entitledto.co.uk](http://www.entitledto.co.uk)

## Policy in Practice

[www.betteroffcalculator.co.uk](http://www.betteroffcalculator.co.uk)

Check what grants you're eligible for. **Turn2us** [www.turn2us.org](http://www.turn2us.org). uk has a grants search and there are other charities that might have grant schemes to help you.

Visit **[www.moneysavingexpert.com/family/money-help/](http://www.moneysavingexpert.com/family/money-help/)** for ways to save money on your household bills and living costs in 2022.

## Groundwork

The Green Doctors offer free, impartial advice and support to help you save energy, reduce your bills, and live in a warmer, more comfortable home. T: 0808 169 1779

# Lambeth Country Show 2022

**The annual Lambeth Country Show is live at Brockwell Park for its 48th edition on **Saturday 16 and Sunday 17 July 2022**, boasting a unique line-up that celebrates the very best of the city and countryside. With over 120,000 people attending throughout the weekend in 2019, one of the biggest free family festivals in the UK is back as we know it.**

The Main Stage brings you an eclectic mix of live sounds on Saturday and pure reggae music for Roots Day on Sunday. Hosting both a local and international line up, ensuring Lambeth has a fully entertaining two days, we welcome the Brixton Chamber Orchestra, as well as the amazing vocals of Lambeth resident Floetic Lara Lee and South London's Soothsayer's

with Akin Soul – expect the best in local talent. Headlining act Heatwave will also be on hand to ensure the whole park is dancing to 'Boogie Nights'. The Trojans kickstart roots day with happy ska sounds and the Empreses of Roots Soul & Reggae (Teshay Makeda, Dionne Reid and Aysha Loren) provide an all-powerful female line up. Jazz hero Cleveland Watkiss MBE sings his Jamaican songbook and reggae veteran Horace 'sleepy' Andy, Studio One legend and sweet voice of Massive Attack, provides a magnificent finale to the weekend.

Following suit, the Main Arena returns in full swing with an unmissable line up for 2022. Welcoming back an awe-inspiring performance from Cavalry of Heroes with their jousting and

highwayman shows, we will also have educational shows such as the Dog & Sheep Show, birds of prey flight shows with SMJ Falconry and the Brymills Best In Show Parade. There's a chance for you to get involved in competitions too – could you become Lambeth's very first Egg & Spoon Race Champion?

Speaking of animals, in traditional country show fashion, Vauxhall City Farm (VCF) brings to Brixton a taste of country-living over the weekend, with a delightful flock of farm animals nesting in the heart of the borough. The ponies, sheep and alpacas (to name a few) gracing Brockwell Park are bound to steal the show, so take the chance to make a furry friend under the guidance of the team at VCF with something for





all the family. Diggerland is back too, inviting children to take part in carefree play throughout the weekend.

Our Discovery attractions offer an unforgettable experience of adventure this year. Immersive Experiences return with an unbeatable package of activities for all ages showcasing planetariums, virtual reality and a 360 degree dinosaur film theatre. The country show has also seen world-class science organisations join us over the years – and this year is no different – play, discuss, discover and get your questions answered.

### Cycle parking and bring a bottle

Please remember that we will have plenty of secure cycle parking at our main entrances that includes all-day security and a valet & fix service to get your bike checked while you enjoy the show. We also encourage you to bring a reusable bottle to fill up at our free water points on site, as well as using them to buy drinks at our bars and from traders.

Lets not forget, we're giving you the chance to show off your creativity with our home grown Vegetable and Flower Competitions, learn how you can participate by visiting our website at

[www.lambethcountryshow.co.uk](http://www.lambethcountryshow.co.uk)  
#LCS2022

“ We're delighted to welcome our residents to the Lambeth Country Show, coming back this year in all its former glory. Expect to see fantastic entertainment in the Main Arena and Village Green. You can also discover local brands and crafts people in the eco village, art, culture and discovery areas. ”

**Cllr Donatus Anyanwu, Cabinet Member for Stronger Communities**

**Lambeth Country Show**  
EST. 1974  
BROCKWELL PARK, BRIXTON

**Saturday 16 & Sunday 17 July**  
12 noon – 8pm  
Last entry 7:30pm  
Brockwell Park

**FREE ENTRY**

Download our FREE A-Z Show Guide app from the Apple Store and Google Play.

Download on the App Store GET IT ON Google Play

- For your safety, searches will be in operation on entry
- Avoid bringing a bag with you to speed up searches
- No alcohol or glass is to be brought in to the show site
- Food is permitted
- Soft drinks in sealed containers are also permitted
- CCTV will be in operation
- Visit our website for full Terms & Conditions

SCAN ME

#LCS22 | [lambethcountryshow.co.uk](http://lambethcountryshow.co.uk) | Funded and organised by **Lambeth**





Department  
for Education

#HAF2022



# Summer of Food & Fun 2022



“

We want to ensure that our young people have a fun, safe and exciting summer this year. The council will be funding more than 47,000 free places in over 70 locations across Lambeth. Our summer programme will offer a wide range of diverse activities for children to get involved in while also providing healthy meals and snacks for all our children. We encourage everyone to get involved, try out new experiences, learn new things and celebrate summer.

**Councillor Mahamed Hashi**  
Cabinet member for Safer  
Communities

**Councillor Ben Kind Cabinet  
Member for Children and Young  
People said:**

For a second year, Lambeth Council has been awarded funding by the Department of Education (DfE) to deliver our successful Summer of Food & Fun. Across this year's spring, summer and winter school holidays, £1.3 million is being invested in providing free healthy food and enriching activities for children and young people aged 4–16 years. Reception to Year 11 and targeted at those receiving benefit-related Free School Meals

(FSM), and places available for children living in households with a lower income.

Given the cost-of-living crisis and the ongoing recovery from Covid-19, the council is determined to offer a programme that helps support families and looks after all aspects of children's wellbeing.



“

This is a brilliant programme that will help make sure children and young people in Lambeth are offered lots of fun, healthy and active things to do during the summer holidays. I'm really pleased that we can run it for another year, and I am grateful to all our wonderful partners that are working with us to make this year's programme happen, which shows just how important community partnerships are to running these exciting programmes. Children and young people are a huge priority for Lambeth Council, especially those who need extra support. This programme, along with our wider summer offer, is an essential part of making Lambeth an amazing place for children and young people to grow up. ”

**Bayo Dosunmu, Chief Executive, Lambeth Council**

**Lambeth's Summer of Food and Fun has a packed programme of summer activities for those aged 4-16, and will run from Monday, 25th July until Friday, 26th August. All broad categories of activity, whether sport, art, trips, or camps, have fully funded places available for children and young people who receive free school meals.**

In addition, the Lambeth Made Education, Skills and Employment programme team will be running:

The **'Create your Future'** Summer programme for young people aged 16–18 (up to 25 for SEND) which was designed with young people in Lambeth known to the Back on Track Team. The **'Developers Challenge'** for young people aged 16–18 with a focus on those who are Not in Education, Employment or Training. The team have also

created the **'Unheard Voices'** employment programme which will be running over the summer to support young people across the borough that are furthest from the labour market.

Lambeth Made Safer Summer have developed the **Summer Violence Prevention programme**, with a specific focus on enhanced interventions for our young people aged 14–25 and identified as at risk or vulnerable to youth violence, from Monday 25 July until Sunday 30 October.

Our libraries service has produced a fantastic programme of work: The Lambeth Libraries Children and Young People's Readers and Writers Festival 2022 for those aged 0–14+, and the ever-popular Gadgeteers Summer Reading Challenge for ages 4–12 which will be delivered across all 10 libraries across the

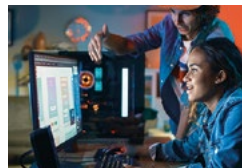
borough. An exciting array of activities are on offer with various prize incentives for those who complete the challenge.

Our **Better Start** children's centres and one o'clock clubs will provide activities and support, with a range of stay and play sessions for babies and toddlers to enjoy together with their parents and carers.

Please go onto our website [www.lambeth.gov.uk/summer](http://www.lambeth.gov.uk/summer) where you can explore the various options, including all other available activities for children and young people in Lambeth during summer. You can also search **Lambeth's Family Information Directory** to see more details or visit [mybestlife.app](http://mybestlife.app) to find support, activities and opportunities for young people throughout Lambeth.



  
my best life



# Over to YOUTH!

**Do you live in  
Lambeth?**

**Are you under the  
age of 25?**

If so, Child Friendly Lambeth wants to hear from YOU about what is important to you in Lambeth and the place where you live. Scan the QR code below to let us know what you think and have your voice heard!



**Scan the QR code  
to let us know  
what you think  
and have your  
voice heard!**



**[lambeth.gov.uk/childfriendly](https://lambeth.gov.uk/childfriendly) Get in touch: [childfriendly@lambeth.gov.uk](mailto:childfriendly@lambeth.gov.uk)**



Lambeth, are you ready to be  
**#InTheLoop?**



Scan to learn more

We're making recycling  
 on-the-go easier by  
 introducing **colourful**  
**solar-powered bins** to  
 our high streets across  
 the borough.



Put your **empty glass, plastic bottles and cans** in the big yellow recycling bins and they'll be turned into something new!

Lambeth #InTheLoop is a partnership between Lambeth Council and award-winning environmental charity Hubbub.

#### ADVERTISEMENT



"It doesn't matter where you live; you can make the most of what you've got."

- Valcie, Clapham

**Be a Neighbourhood  
 Champion!**



Lambeth's 700 Neighbourhood Champions work with their neighbours and the council to improve their local environment and create stronger communities.

Find out how you can get involved in making your street or estate the best it can be:

[lambeth.gov.uk/neighbourhoodchampions](https://lambeth.gov.uk/neighbourhoodchampions)



Join us for a summer full of fantastic events  
for you and your little ones

Puppet shows, dancing, yoga,  
crafts, seaside experiences, sports,  
singing, drumming, gardening  
and much, much more



See what's on and sign up at

[leaplambeth.org.uk/SummerFestival](http://leaplambeth.org.uk/SummerFestival)



or call 07984 235719

