

# Lambethtalk

PEOPLE • PLACES • EVENTS • DATES • CONTACTS • FEATURES

SUMMER 2022



Windrush Festival  
17-26 June page 11



# REAL MATES SAY 'LEAVE HER ALONE'



**Catcalling a woman  
is harassment.  
Don't let your mates do it.**

Look out for Lambeth – share  
any incidents on Commonplace.  
[lambethsaferstreets.commonplace.is](https://lambethsaferstreets.commonplace.is)

  
**Lambeth**

## in this issue...

News	4
Bayo Osunmu	6
Resident Survey results	7
Climate Action	8
Windrush Festival	11
Crowdfunding	12
Child Friendly Lambeth	15
Fostering	16
Lambeth together	18
Household support	22

Cover story: Brixton Chamber Orchestra (C) plays on 22 June at Windrush Square (p.5)

# Welcome

Dear residents,

Last month, you put your trust in the Labour administration to continue leading our wonderful borough. We are immensely proud to have received your support and we will work hard every day to repay your trust.

People in Lambeth are facing some big challenges over the next few years. However, we know that with our ambitious agenda and by working hand in hand with our communities as we have done during Covid-19, we can help people through the cost-of-living crisis, transform our borough into a truly sustainable place fit for the future; and put young people first by giving them the best start in life.

We have hit the ground running and are already hard at work. Together, we will continue to make Lambeth a fairer, more equal borough for all.

**Cllr Claire Holland, Leader of Lambeth Council**



For translation of articles in any other language, large print format, or to opt-out from receiving the magazine contact: [lambethtalk@lambeth.gov.uk](mailto:lambethtalk@lambeth.gov.uk)



## Ready Steady Go!

**FREE sessions to help families achieve a healthier diet and a more active lifestyle.**

**New programmes will be starting in September 2022.**  
To register or make a referral please use our online link at [lambeth.gov.uk/ready-steady-go](https://lambeth.gov.uk/ready-steady-go)

Contact the team on **020 7926 0619** or email [readysteadygo@lambeth.gov.uk](mailto:readysteadygo@lambeth.gov.uk)





NEWS



## Iconic skatepark set for complete overhaul

**Stockwell Skatepark, near Brixton town centre, is currently getting a £500,000 makeover with the popular park's worn-out and rough concrete surface being repoured to make smoother, as well as new modern skating features added.**

The new improvements will significantly better the experience for all types of wheeled riders, providing improved flow around the park, a more inviting space for beginners and refreshed seating.

Lambeth Council, which owns the site, has worked closely with the Friends of Stockwell Skatepark (FOSS) and local residents on the refurbishment which started in April. The work is scheduled to be completed in August this year.

The skatepark on Stockwell Road, which is a free to use outdoor site, first opened in 1978 and attracts skateboarders, BMX bikers and other riders of all ages and abilities.

The project will be completed using contributions from developers for local projects worth £180,000, including £100,000 from Network Homes, a housing association that has built new flats next to the skatepark, £110,000 from the London Marathon Trust and further funding from the council. The announcement follows news that Kennington Park Skatebowl is being returned to its former glory ahead of a scheduled re-opening later this year. Once re-opened the park will add to Lambeth's impressive collection of outdoor skateparks, including well known Southbank Skatepark and the popular Clapham Common Skatepark.

## Small electronic items and batteries collection

Small electrical items and batteries can now be collected from residents living in kerbside properties across the borough. These items must fit inside a standard-sized carrier bag and be presented on top of your recycling bin on the day of your general waste and recycling collection.

Used batteries will also be accepted if they're taken out of the electrical items and presented inside a separate carrier bag, also on top of the bin. This applies to all products apart from laptops, tablets, mobile phones and electric toothbrushes – you can leave the batteries inside these items. Due to limited space on the refuse vehicles, a 'little and often' approach is encouraged.

If items aren't taken away immediately, please remain patient and try again the following week, when we'll prioritise your collection. You can also visit [www.recycleyourelectricals.org.uk](http://www.recycleyourelectricals.org.uk), enter your postcode, and find your nearest recycling point.

More information:

[lambeth.gov.uk/rubbish-recycling/electricalsrecycling](http://lambeth.gov.uk/rubbish-recycling/electricalsrecycling)



## Brixton Chamber Orchestra brings free music to the community all summer long!

Local music charity Brixton Chamber Orchestra will be celebrating Windrush Day with a special surprise, follow them on Instagram **@brixchamber** for all the latest updates.

Following that, their popular Grime Orchestrated is heading to the Glastonbury Festival (22-26 June) with performances across 3 separate stages.

The Brixton Chamber Orchestra is also set to stage a series of free performances at a dozen Lambeth housing estates during July. The 22-piece orchestra will perform a variety of music from grime to classical, swing to disco, as part of its summer programme of events.

This year's performances will take place from 22 July until 31 July. Locations will be confirmed on the BCO website at <https://brixchamber.com>

**Lambeth Council's local government election** results were finalised on Friday, May 6 following polling day the previous day. Sixty-three councillors were elected to the council as a result of the poll across 25 new wards. The Labour Party had 58 councillors elected alongside three Liberal Democrats and two Green Party representatives.

As a result of the poll the Labour Party control the council and have formed a new administration. A new Cabinet headed by Cllr Claire Holland was presented to a meeting of full Council on May 25. To see the full results broken down by ward and political party please visit [lambeth.gov.uk](https://lambeth.gov.uk).

## South Bank Colleges rated 'GOOD' from Ofsted

**South Bank Colleges, comprising Lambeth College and London South Bank Technical College, has been rated 'GOOD' from its latest Ofsted inspection.**

The inspection found that the College has 'a strong focus on providing an education which will enable learners to gain employment'. The Ofsted report

praised Lambeth College staff for providing 'opportunities for learners to develop their wider skills and talents whilst at college. Executive Principal of South Bank Colleges, Fiona Morey said:

"This fantastic result comes at a time when we are preparing to open the doors to London South Bank Technical College, our brand-new technical college based in London's buzzing Zone 1. Our new campus will provide more opportunities to change the lives of many."

## £4million investment in Brixton Rec Quarter

Lambeth Council is set to start work on the £4million project to upgrade Brixton Station Road and the public areas of Brixton Rec with new affordable workspace, street improvements, new shopfronts, and essential works to support market traders. The project will see significant investment in central Brixton and increase skills, training and employment opportunities for Lambeth residents and businesses.



**The new Chief Executive of Lambeth Council loves the diversity and the energy of the borough and promises to do his best to make it better and safer for all.**

## Meet the new Chief Executive Bayo Dosunmu

### **How do you feel about being appointed?**

Put simply, I'm delighted. Lambeth is a special place, and I couldn't be more excited and honoured to be appointed chief executive. There's lots to do as we start to emerge from the pandemic and embark on a new chapter with a new administration, and a new borough plan, but with so many remarkable people here, and with all the culture, diversity, and opportunity around us. I can't wait to get started.

### **What are your priorities for your new role?**

My immediate priority is to listen and understand. Although I've been at Lambeth for three years as Strategic Director for

Residents Services, I want to hear from colleagues, partners, politicians, businesses and our residents about what they see as the challenges and opportunities ahead.

### **If you could instantly change one thing what would that be?**

Right now, we are facing several global challenges that are driving unprecedented local impacts on our communities. From climate change response, health inequality, cost of living, to the food shortages that we're starting to see in the supermarkets – these are all very real issues that will need long-term focus, determination, and collective power from everyone in Lambeth to solve. However, the one thing that

I would change instantly would be to put an end to the senseless killing or hurt of young people on our streets. As a father to teenage sons, I feel very strongly about this issue.

### **What is your favourite place in Lambeth?**

Brixton, Streatham, Kennington are favourites but there's so much to like about Lambeth. I love going for walks, and we have bustling town centres, amazing parks, and great restaurants to explore. Music wise, I like Dave and I enjoy watching local talent at one of the many bandstands during the summer festivals and at the new Brixtonhouse theatre.



# Residents' Survey

Lambeth Council regularly surveys residents in the borough about their attitudes to their local area, satisfaction with the council, and various aspects of council services, as part of the Annual Residents' Survey programme.

However, the coronavirus (Covid-19) pandemic and its impacts have changed the way we do things. Now each year, in addition to our annual surveys, we commission shorter surveys to better understand current topics and how life continues to change for our residents. We care about how residents are coping and identifying ways in which we can

effectively support residents as the impacts of the pandemic continue to be felt.

**3,430 adults were interviewed** as part of the Annual Resident Survey 2021 and the Q3 2021 Survey in September 2021. Each survey has gathered feedback from a representative mix of residents and collectively show that:



**Top 3 things that residents think make the borough a good place to live:**

- parks and open spaces
- public transport
- diverse and multicultural communities

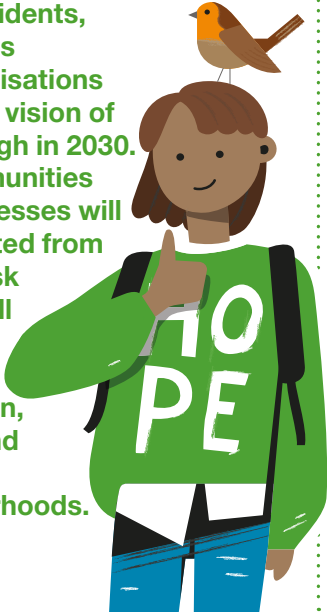
**However, the surveys also show that:**

- Residents are less likely to feel safe walking around their area in the evening – with the proportion of residents who feel safe falling from 64% to 53% over 4 months. Female residents, those with a disability and respondents who identify as belonging to mixed or multiple ethnic backgrounds are feeling significantly less secure.
- Clean streets, the level of crime and the level of traffic congestion are the areas in most need of improvement
- Feelings of worry remain relatively high in Lambeth, with over one quarter of residents (27%) reporting high levels of anxiety – residents with a disability, female and residents from a younger area group are more likely to report higher levels of anxiety.
- More than a quarter of residents (28%) expect to find it 'difficult' to meet their household expenses over the next year.

Our residents' surveys help us meet the needs of local people and is currently being used to shape our new Borough Plan. The next quarterly survey is due to take place in May 2022 and we will report on these findings later in the year.

# Reaching our vision for a net-zero Lambeth by 2030

Lambeth's Climate Action Plan sets ambitious goals developed by our residents, businesses and organisations to reach a vision of our borough in 2030. Our communities and businesses will be protected from climate risk and we will live and work in low-carbon, healthy and thriving neighbourhoods.



National Theatre

**ADAPTATION** protecting our communities from climate risk

## GOALS

- Sustainably manage 10% of rainwater on impermeable surfaces
- Reduce heat risks through Heat Mitigation Plan
- Work with the community to reduce climate risk
- Reduce disparity in impacts of climate risk



Kings College London

**BUILDINGS AND ENERGY** developing low-carbon homes

## GOALS

- Retrofit buildings to EPC level C or higher
- Reach 100% renewable energy source provision through local area energy planning
- Retrofit existing buildings and ensure new development meets net zero standards
- Take action to eliminate fuel poverty



Low traffic neighbourhoods

**TRANSPORT** shifting to green and active travel

## GOALS

- Decrease motor traffic by 27%
- Allocate 25% of kerbside space to communities and businesses
- 85% of journeys made by green transport
- Zero direct emissions from deliveries



The Remakery

**WASTE, CONSUMPTION AND FOOD** building a zero-waste, local, circular economy

## GOALS

- Reduce consumption-based emissions by 2/3rds
- Build circular solutions into procurement
- Minimise waste to reach targets including 3-stream segregated waste
- Increase consumption of plant-based food



Wildflower meadows

**BIODIVERSITY & ENVIRONMENTAL QUALITY** cleaning air and greening spaces

## GOALS

- Naturalise 30% of land for wildlife
- Increase green coverage by 15%
- All new developments incorporate space for nature
- Reach World Health Organisation air quality targets

Read the goals in full and learn what to do to support climate action.





ADVERTISEMENT



# NO VOTE, NO SAY.

You must be registered to vote at elections.

Register online at [gov.uk/register-to-vote](https://gov.uk/register-to-vote)

For information about postal and proxy voting visit  
[lambeth.gov.uk/vote](https://lambeth.gov.uk/vote)





# OurBike

Ourbike is coming to Lambeth

London's new, app-based electric cargo share scheme  
will soon be available in seven sites in Lambeth

The electric cargo bikes will be available  
around the Borough to hire by the hour

The bike can carry up to 100kg and has space for everything  
from the weekly shop to pets, business deliveries to kids

Subsidised by Lambeth Council, the first two hours of use are free

Just book a free introductory session with one of our experts  
and then you are free to use the OurBike app to reserve the bike,  
unlock and lock it and end your journey



Visit [ourbike.co.uk](https://ourbike.co.uk) for details



Check out the OurBike video

## TRY BEFORE

THE FLEXIBLE, AFFORDABLE, SUPPORTIVE BIKE SCHEME

## YOU BIKE

Try a new or used bike on a subscription and cancel any time  
OR if you decide to buy the bike we refund your subscription fees

Try Before You Bike has helped thousands of people  
start cycling since its launch in 2017

Wide range of bikes including kids, hybrid, folding,  
traditional, electric, cargo, adaptive plus any accessories  
you need from child seats to baskets

**FREE** delivery and collection

**FREE** maintenance cover

**Insurance** available

Introductory session with one of our  
cycling experts to help with security advice,  
cycling techniques, route planning and more



Visit [peddlemywheels.com/try-before-you-bike](https://peddlemywheels.com/try-before-you-bike) for details

  
**Lambeth**

Peddle My Wheels  
run the programmes  
on behalf of  
Lambeth Council





**CELEBRATE IN LAMBETH**

**17<sup>th</sup> - 26<sup>th</sup> JUNE**

Find out what's happening in your area at

[www.lambeth.gov.uk/windrush2022](http://www.lambeth.gov.uk/windrush2022)

Lambeth

**WINDRUSH  
2022**



**COL  
OUR  
FUL**





# CROWDFUND LAMBETH

Crowdfund Lambeth continues to support community projects making our borough a unique place to live, work, learn and do business. The project must demonstrate strong local support – shown through a vibrant crowdfunding campaign.

Recent community successes where Lambeth has match-funded up to £5,000 of the total raised by local supporters include:



## Primary school project tackling toxic air

Rosendale Primary School's plans to create green schoolground spaces and swap cars for cycles got a boost when Crowdfund Lambeth pledged £2,500 and matched community contributions to cover the costs of an urban environmental project.

Parent volunteers who want

cleaner air and green natural space for 650+ children aim to tackle toxic air in the playground (double the World Health Organisation recommended levels) with greening activities like:

- de-paving small planting areas to absorb air pollution
- recycle school kitchen left-overs to enrich plant life
- repairing greenhouse and vegetable gardens

- an outdoor classroom with a 'biodiversity' roof and
- initiatives to get people cycling.

## Artspace for youth

Crowdfund Lambeth supported 198 Contemporary Arts and Learning to develop their new youth space into three floors of creativity.

198 CAL have developed young creatives for over 30 years. Half the artists in Venice Biennale's first diaspora pavilion (2017) had exhibited at 198. It's a small organisation who've made a national impact by pushing creative boundaries, giving voice and space to under-represented artists, communities and cultures.

Their crowdfunding campaign to get the new youth space ready to

<https://www.crowdfunder.co.uk/funds/lambeth>

## More information

To be considered for match-funding from Lambeth Council, projects must contribute to one or more of the borough plan priorities:

**Sustainable growth:** a growing economy that everyone benefits from.

**Resilient communities:** communities that are thriving and connected.

**Promote care and independence:** people supported to live well and independently.

**Place:** Make Lambeth a place people want to live, work and invest.

You can find out further details on how to apply and our criteria by visiting the Crowdfund Lambeth webpage (see bar p12) or contact [crowdfunding@lambeth.gov.uk](mailto:crowdfunding@lambeth.gov.uk)



open took just a month and a day to meet the £5,000 target. Artists and supporters picked up brushes and rollers to finish decorating the galleries, and Crowdfund Lambeth pledged £1,750.

## Home for Lambeth Tigers

Grassroots football sensation Lambeth Tigers aim to get as many young people as possible playing football (and cricket). They made their dream of becoming the first club in Lambeth to have its own ground with grass playing fields to run kids' sports sessions a reality last summer 2021.

£20,000 would secure the lease on Griffin Sports Ground in Dulwich Village and any extra funding was to pay for making the site suitable



– mini-goals, safety netting, changing the changing rooms for young players. With Covid-19 making traditional fundraising impossible, a crowdfunding campaign raised £25,585 – including a Crowdfund Lambeth pledge of £2,500.

## Brixton BMX on the road

Crowdfund Lambeth contributed £5K of the £30,000 target to improve Brixton BMX track with resurfacing work where heavy use and weather have eroded it. Improving drainage will make the track more useable, especially in winter. It's Phase 1 of an improvement programme to protect the track for future generations and support the club in delivering and expanding services for local young people. Phase 2 will bring new storage with more bikes and gear for kids. In Phase 3 new fencing will help reduce the risks of vandalism and bring the track up to specification for regional races by installing timing loops.

# SB\ C LONDON SOUTH BANK TECHNICAL COLLEGE



Brand new  
technical college  
purpose-built for  
your future

**APPLY NOW** ➤

[southbankcolleges.ac.uk](https://southbankcolleges.ac.uk)  
020 7501 5010

Accepting applications  
for **September 2022**

- Computing and IT
- Dental Technology and Nursing
- Motion Graphics/Animation
- Engineering and Robotics
- Esports
- Forensics and Criminal Investigation
- Games Design
- Social Media
- And more...



Register for our next **Open Event**



# Over to YOUTH!

**Do you live in  
Lambeth?**

**Are you under the  
age of 25?**

If so, Child Friendly Lambeth wants to hear from YOU about what is important to you in Lambeth and the place where you live. Scan the QR code below to let us know what you think and have your voice heard!



Scan the QR code  
to let us know  
what you think  
and have your  
voice heard!



[lambeth.gov.uk/childfriendly](https://lambeth.gov.uk/childfriendly) Get in touch: [childfriendly@lambeth.gov.uk](mailto:childfriendly@lambeth.gov.uk)

# Be the difference.

Every day in Lambeth a new child comes into our care, and we urgently need more foster carers to give them the love and support they deserve. Fostering means looking after someone else's child because their birth family are unable to. That can vary from short-term foster care to having a child or young people with you for a long time.

As single parent carer Tom says:

“

I recommend you find out what they're interested in and do those things as a team. We've spent a huge amount of time just going to the park together. We're building a go-kart during half term.”



**As a foster carer, you'll look after children as if they were your own – in a loving home environment.** You'll need to be sensitive to the challenges they'll face after separation from their families and any additional trauma they may have been through, such as abuse or neglect.

Fostering for your local council helps the young person and helps

our community. There are many different types of foster care, and we're sure there's one that works for you. For example, you could provide short-term respite care to children with disabilities to allow their parents a break. Or, if you have the space, you could help us keep a family together by caring for siblings. If you work 9 to 5, you may find it easier to

foster older children who are more independent.

After a while, some carers specialise in areas of care: Joan cares for young people on remand from prison, helping them get their lives back on track. Solomon looks after unaccompanied children seeking asylum from war-torn countries.

## When you foster for Lambeth, you get:

- **24-7 out-of-hours support** from a dedicated social worker and our team, 365 days per year
- **two weeks paid respite** each year (14 days)
- a **£500 referral bonus** if you refer a friend who becomes an approved, active foster carer for Lambeth
- a **rebate of your council tax** if you are actively fostering for us
- among the **most competitive fees and allowances in London**
- Fostering Network membership and the opportunity to join our active fostering support group
- **priority** (before a private fostering agency) when a child is looking for a placement
- a thorough induction programme
- your own dedicated supervising social worker (SSW)
- ongoing training and development opportunities throughout the year
- peer mentorship to newly approved carers run by our most experienced foster carers

## Be the difference.

Could you **foster**? Children in our community are in need of stable, loving homes to achieve their best future and fulfil their potential.



[www.lambeth.gov.uk/foster](http://www.lambeth.gov.uk/foster)

**Lambeth**

Being a foster carer isn't always easy, but our team will help every step of the way. You can also choose to meet regularly with our foster carer support group helping each other improve the way we work. The journey to becoming a foster carer for Lambeth takes around six months. Although this may seem a long time, most

people tell us the process allows them to think more closely and prepare themselves for making the commitment.

We believe our children deserve the best, and should be given the best chance to thrive, no matter what their circumstances. We hope that you do too - and choose to join the Lambeth family.

**Please contact us today for an informal chat and more information:**

**Call:**  
**020 7926 8710**

**Email:**  
**[fosteringduty@lambeth.gov.uk](mailto:fosteringduty@lambeth.gov.uk)**

**Find out more:**  
**[www.lambeth.gov.uk/foster](http://www.lambeth.gov.uk/foster)**



ADVERTISEMENT



**Our Healthier South East London**  
Integrated Care System

**NHS**

# JABBED & CLEARED FOR TAKE OFF

It's never too late to come forward for your first dose of the Covid-19 vaccine if you've needed a bit more time to make up your mind. And if you had your second dose more than three months ago, it's time to get extra protection with a booster dose. Get ready for the summer holidays.

You can join over 1.5 million people who have had a first dose and over 1 million people who have had their booster vaccination in south east London alone, protecting them against Covid-19.

Being vaccinated against Covid-19 means you are well protected, with evidence from the UK Health Security Agency showing that a booster jab prevents around 75% of people getting Covid symptoms. It also makes life easier, especially when it comes to planning holidays, work trips or visiting family abroad.

Thinking about the rest of your family, remember, everyone aged 5 and over can get the vaccine.

**Getting your free NHS Covid-19 vaccination is easy.** In south east London we have Covid-19 vaccine walk-in clinics available for those 12 and over and a few for 5-11s. Find out more here: [www.selondonccg.nhs.uk/popupclinics](http://www.selondonccg.nhs.uk/popupclinics).

If you want to plan in advance, you can book online at [nhs.uk/covidvaccination](http://nhs.uk/covidvaccination) or call 119. You do not need to be registered with a GP to get your vaccination.

Sarah Birch, south east London resident who works as cabin crew for Virgin Atlantic said: "As someone who loves to travel and also loves to work in the aviation industry, I know a bit about travel tips and how to have a stress free break abroad. These days, being fully vaccinated against Covid-19 is a brilliant way to make traveling so much easier."

## Vaccines are safe and effective

If you want to read more about the vaccines visit [www.nhsselvax.com](http://www.nhsselvax.com)

# Carers Week: making caring visible, valued and supported

“My mother and daughter are precious to me, and I wouldn't leave them in anyone else's hands. It can be very challenging and lonely, but I love being a carer. And with the right support caring can be enjoyable.

“My daughter has time with a support worker each week. This gives me a break, and her more time in the community. I also have the option to have a respite break every few months.

“The Carers Hub do lots of things in the community, such as virtual mindfulness, pottery and various courses. Their newsletters are an excellent resource – I found out about the Carefree initiative this way.

“Carers4Carers also do fantastic things including exercise classes, theatre trips and park walks on Fridays. This is a chance to meet other carers and share with like-minded people.

Carers Week runs from 6-12 June and is a time to celebrate and recognise the vital contribution made by unpaid carers. Margaret from Tulse Hill cares full time for her grown up daughter, with severe learning disabilities, and elderly mother. She shares some of what has supported her.



Margaret

“I would say to other carers information is key. Come to meetings and activities with other carers to get support, don't ever suffer in silence.”



## Lambeth Carers Hub

The Carers Hub supports unpaid carers (aged 5+) providing individual and peer support, activities and training. Carers (18+) can also apply for a Lambeth Carer's Card to connect to free caring information and resources, including support around emergency planning. [www.carershub.org.uk](http://www.carershub.org.uk) / 020 7501 8970

### Request a carer's assessment

If you care for an adult who is elderly, with a disability or with ill health you can request a carer's assessment to discuss the support you may need at:

[www.lambeth.gov.uk/carers-assessment-and-care-plan](http://www.lambeth.gov.uk/carers-assessment-and-care-plan)

### Carefree

Carefree is a short breaks initiative which gives carers time away from their caring responsibilities.

Full-time, unpaid carers can apply at: [www.carefreespace.org/take-a-break](http://www.carefreespace.org/take-a-break)

### Lambeth Carers Strategy

The Lambeth Carers Strategy will be refreshed in 2022. We need views from carers on what would make you feel more supported. Visit [www.lambeth.gov.uk/carers-strategy](http://www.lambeth.gov.uk/carers-strategy) or call 020 7501 8970.





# Shining a light on new homes

from Addition by Homes for Lambeth

**Established to create and sell quality homes in Lambeth, Addition by Homes for Lambeth's focus is on helping more local people become homeowners.**

Having launched their first development, Chapter, in March, they have just unveiled Beam, a contemporary 31 home development near Kennington Park and Myatt's Fields Park. With attractive landscaped communal gardens at its very heart, Beam offers light-filled one and two-bedroom apartments overlooking a woodland garden, grass lawn, naturalistic planting and quiet seating areas. There will be 13 new affordable homes, six of which will be available through Shared Ownership with a further 18 homes for sale. Beam's attractive four-

storey apartment buildings have been designed to blend in with the variety of architectural styles and scales that surround them. There is a deliberate design focus on light-filled and well-proportioned interiors. Many of the apartments offer south-facing or dual aspect views over the gardens, with floor to ceiling glazing in the open-plan living, dining and kitchen spaces. Each apartment also has a private balcony or terrace from which to enjoy views of the beautifully manicured communal gardens – relaxing green spaces right on the doorstep.

The hallmark of an Addition by Homes for Lambeth property is high quality design and at Beam you'll find impressive fixtures and fittings including underfloor heating

as well as contemporary designer kitchens with stone worktops and Siemens appliances. The materials, architectural styles, features and landscaping have all been chosen to enhance the living experience of the homeowners while improving the surrounding area.

Sustainability and future-proofing are key to the design of all Addition by Homes for Lambeth developments, helping to ensure that Lambeth's high environmental and energy standards and the council's net-zero carbon targets are met. Beam has been designed as an energy efficient, sustainable development with air source heat pumps, solar panels, water and waste reduction measures as well as ecological enhancements.

If you are interested in buying an apartment at Beam, please call 0203 128 7433 or email [sales@additionhomes.co.uk](mailto:sales@additionhomes.co.uk)

Ask us about Shared Ownership opportunities.

Beam will be completed in 2023. Sign up to hear the latest news here: <https://www.additionhomes.co.uk/>



ADVERTISEMENT

# BEAM

FROM

ADDITION



By Homes for Lambeth

## BUILDING A BRIGHT FUTURE

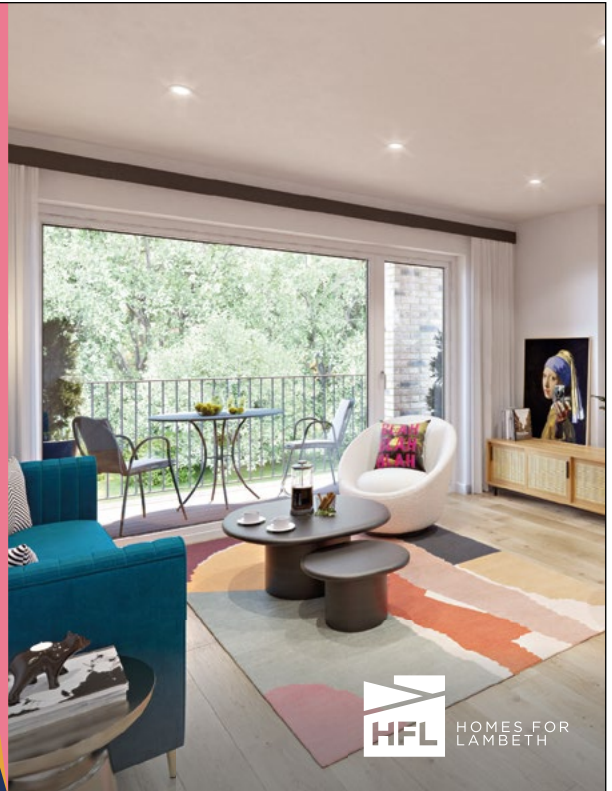
Discover a contemporary development of 31 new homes, just minutes from Oval

Well-designed, quality homes with light, bright spaces – inside and out

Find out more at [additionhomes.co.uk](http://additionhomes.co.uk) or call us on 0203 128 7433



ORLANDO REID



HOMES FOR LAMBETH

# CHAPTER

FROM

ADDITION



By Homes for Lambeth

## YOUR NEXT CHAPTER COULD START HERE

Final chance to buy at our stunning new development, located in the heart of Lambeth

Visit [additionhomes.co.uk](http://additionhomes.co.uk) or call 0208 099 1111



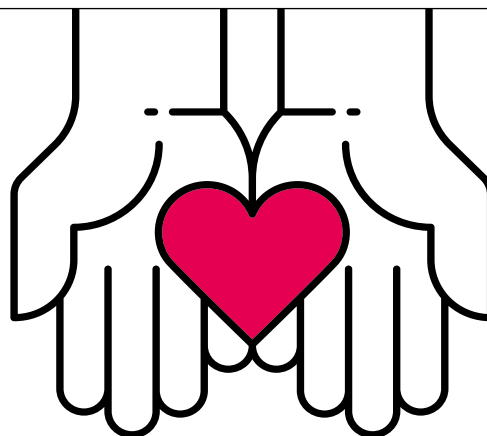
Backed by HM Government

James Pendleton  
Lead • New Homes • Investments



HOMES FOR LAMBETH

# Lambeth's Household Support Scheme



**Here for you. If you are struggling to pay your bills or to afford food, we can help.**

## Who can use this scheme

**The Household Support Scheme is available to you if you are:**

- Struggling to pay your bills or to afford food
- Impacted in any way by the increasing cost of living, including needing support with food or meeting urgent bills
- Impacted in any way by the Covid-19 crisis, for example, a loss of work or change in economic situation
- In need of support to prevent you entering institutional or residential care
- A family or individual under exceptional pressure
- Setting up home as part of a planned resettlement

## How to apply

**All applications for the Household Support Scheme are made online.** If you need support with making an application your support worker can make it on your behalf. If this is not possible we can help you complete the form by phone. Email us at **ESsteam@lambeth.gov.uk** giving a contact phone number and we will call you back.



**To find out if you qualify for the scheme please visit**  
**[lambeth.gov.uk/HouseholdSupportScheme](https://lambeth.gov.uk/HouseholdSupportScheme)**

# Let Lambeth Bloom

The council ended the routine use of glyphosate to control weeds in May 2021. All scheduled weeding is now done manually.

Alongside this scheduled weeding, we're re-introducing the successful Community Weeding Scheme, this time to enable residents to nurture their neighbourhoods' natural biodiversity. Wild plants that grow on our pavements and around trees benefit local wildlife, provide a welcome burst of colour and help residents without gardens connect with nature.

To find out more, visit:  
[lambeth.gov.uk/weeding](https://lambeth.gov.uk/weeding)



ADVERTISEMENT

## The Simple Lambeth Funeral

Our prices

£1512.00

£1632.00 out of hours

current fees valid until 31 March 2023

We will

- Arrange the funeral - cremation costs included ✓
- Collect the deceased in working hours ✓
- Organise statutory medical papers if required ✓
- Provide a coffin suitable for cremation ✓

Find out more

[bereavementservices@lambeth.gov.uk](mailto:bereavementservices@lambeth.gov.uk)  
[lambeth.gov.uk/bereavement-services](https://lambeth.gov.uk/bereavement-services)  
 Monday - Friday, 8am-4pm 020 7926 7999  
 Out of hours 020 8695 9500



Lambeth



# free early learning for 2-year-olds

giving  
your child  
a better  
start



## Free childcare and early learning for 2-year-olds in Lambeth

Your child could be eligible for up to 15 hours a week of free early learning with a childminder, pre-school playgroup, day nursery, nursery school or Children's Centres. Find out if you qualify and apply online today.

**[lambeth.gov.uk/freeearlylearning](https://lambeth.gov.uk/freeearlylearning)**



For more information contact:

**Lambeth Families  
Information Service (FIS)**

[fis@lambeth.gov.uk](mailto:fis@lambeth.gov.uk)  
[twitter.com/LambethFIS](https://twitter.com/LambethFIS)  
[lambeth.gov.uk/fis](https://lambeth.gov.uk/fis)  
020 7926 9558



  
**Lambeth**