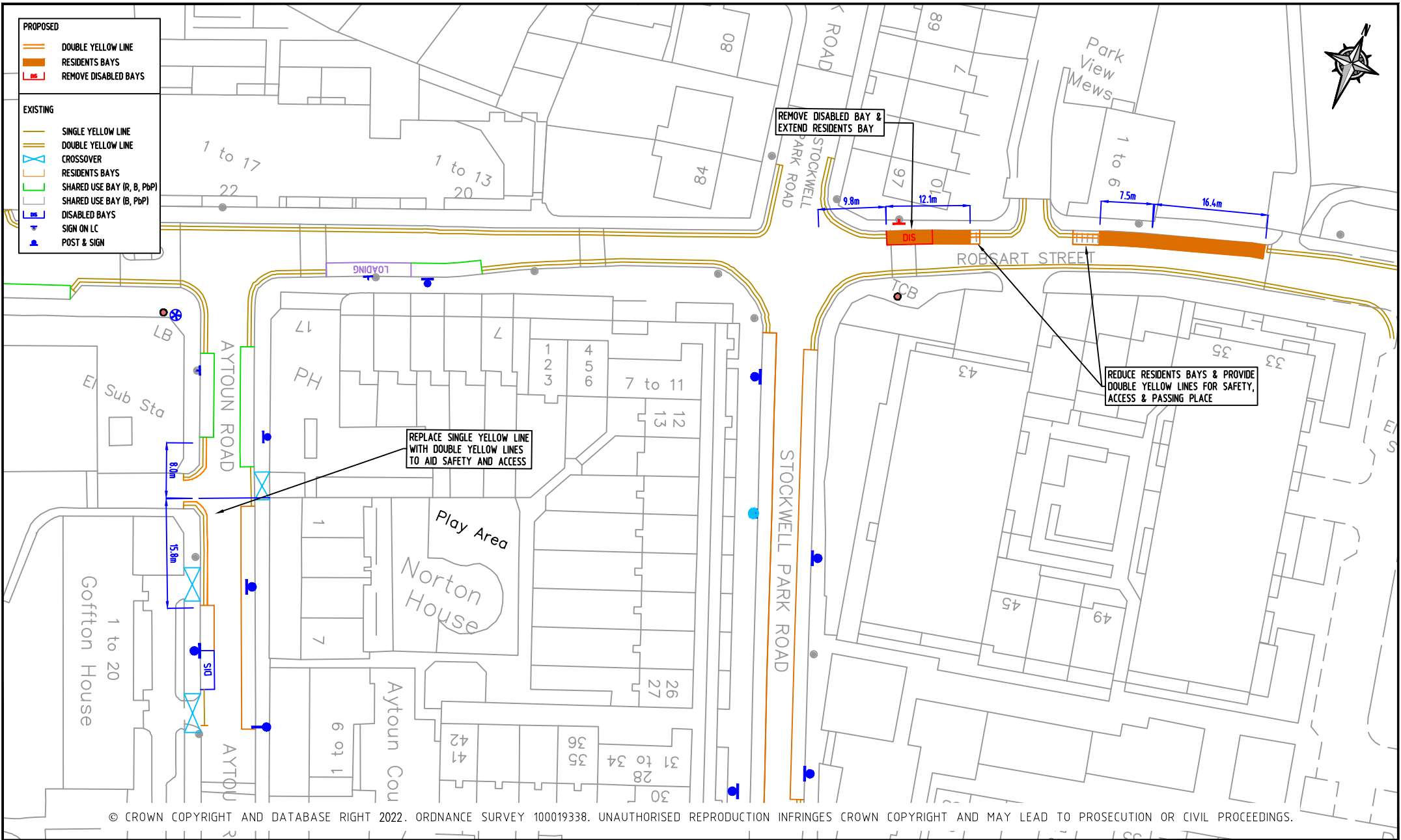




- PROPOSED**
- DOUBLE YELLOW LINE
 - RESIDENTS BAYS
 - REMOVE DISABLED BAYS
- EXISTING**
- SINGLE YELLOW LINE
 - DOUBLE YELLOW LINE
 - CROSSOVER
 - RESIDENTS BAYS
 - SHARED USE BAY (R, B, P&P)
 - SHARED USE BAY (R, P&P)
 - DISABLED BAYS
 - SIGN ON LC
 - POST & SIGN



© CROWN COPYRIGHT AND DATABASE RIGHT 2022. ORDNANCE SURVEY 100019338. UNAUTHORISED REPRODUCTION INFRINGES CROWN COPYRIGHT AND MAY LEAD TO PROSECUTION OR CIVIL PROCEEDINGS.

NOTES:

REV	DESCRIPTION	DRAWN	SIG	DATE	CHKD	SIG	DATE	APP	SIG	DATE

Lambeth
 PARKING, STREET MANAGEMENT
 AND COMMERCIAL
 3RD FLOOR, CIVIC CENTRE
 6 BRIXTON HILL
 LONDON, SW2 1EG
 020 7926 9000

DRAWN	BC	PROJECT	PROPOSED CPZ AMENDMENTS		
CHKD	LM	DRAWING TITLE	ROBSART ST & AYTOUN RD (CPZ 'B')		
APP	DE	CLASSIFICATION	TMO	PAPER	A3
				SCALE	1:500
DATE	18.07.22	DRAWING NO	DES-CPZ-W&L-1004-001-05		REVISION
					-