

Child Friendly Lambeth Discovery Phase Report

October 2022

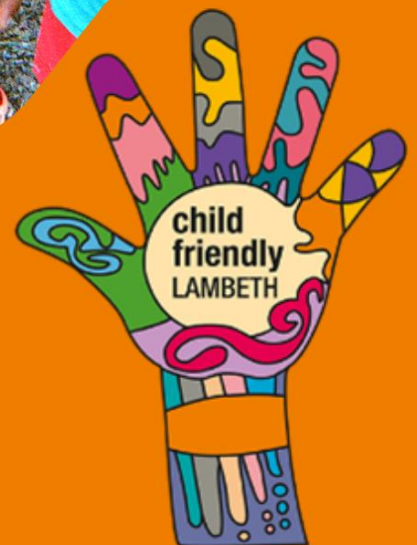




Table of Contents

Foreword	4
Introduction	4
Children's rights: an introduction	5
Our journey	6
Partnership Away Day	6
CFL logo	6
CFL Launch	7
Baseline children's rights staff survey	7
Socialising the CFL programme	7
UNICEF UK training	8
Programme governance	8
Who are Lambeth's children and young people?	9
How did we listen to young people and who did the programme speak to?	10
Creation of consultation methods	10
Child Friendly Lambeth digital surveys	11
School workshops and focus groups	11
Engagement at community events	12
Partner-led consultations	12
Vox pops by Young Creators UK	13
I Have a Voice!	13
Easy-read adaptation	13
Translated and interpreted versions of the CFL survey	13
Asylum-seeking and refugee engagements, survey adaptation and use of interpreters	14
CFL art workshops and creation of mural	14
Under 5s photo activity	15
Demographic breakdown of respondents	15
Gender identity	15
Age	15
Ethnicity	16
Languages spoken	16
Disability and long-term health conditions	17
Children in care and care leavers	17
What did Lambeth's children and young people say?	18



Child and young person friendly consultation results video.....	18
Children's rights.....	18
Decision-making and communicating with young people	18
Children and young people's experiences in Lambeth.....	19
Place, space, and access to opportunities	20
Health and wellbeing	22
Safety	23
Children and young people's favourite things about living in Lambeth.....	26
Definition of child friendly and how to achieve it in Lambeth.....	28
Asylum-seeking and refugee children-specific responses.....	30
Our next steps	32
Appendices	33
Appendix 1: How did we consult with children and young people?.....	33
Appendix 2: Other youth consultations that fed into CFL's consultations	34
Appendix 3: Useful links.....	35
Appendix 4: Selection of CFL partner logos (non-exhaustive list).....	35





Foreword

Lambeth's ambition for all children and young people is that it should be one of the best places in the world for them people to grow up, providing a rich mix of relationships, experiences, opportunities, and services that enable children and young people from all backgrounds and communities to thrive. Our ambition is to become a child friendly community where the voices, needs, priorities and rights of children and young people are an integral part of public policies, programmes, and decisions. Where children and young people have a real say in the decisions that affect their lives.



Lambeth is ambitious every day for every child; putting young people and their families at the heart of what we do (Mission Statement).

From Lambeth's Children and Young People's Plan, 2018 – 22

Introduction

Child Friendly Cities and Communities is a UK Committee for UNICEF (UNICEF UK) programme that works with councils to put children's rights into practice. The programme aims to create cities and communities in the UK where all children "have a meaningful say in, and truly benefit from, the local decisions, services and spaces that shape their lives" ([UNICEF UK Child Friendly Communities UK website](https://www.unicef.org/uk/child-friendly-communities)). Child Friendly Cities and Communities is part of a global UNICEF initiative that reaches over 30 million children in close to 50 countries.

Lambeth embarked on this ambitious three-to-five-year journey in November 2021. Child Friendly Lambeth (CFL) have spent the last eight months speaking to over 1500 children and young people aged two to 25 to find out what is important to them, how we can all make Lambeth more child friendly and how Lambeth's children and young people can be meaningfully involved in decisions that affect their lives.



The purpose of this report is to provide an overview of who we spoke to, how we engaged and, most importantly, what children and young people said to us. By bringing this report together, we hope to share our initial findings across Lambeth Council, the CFL partnership and with children and young people to begin our journey to influence the decisions we make, the way we make those decisions and ensuring the needs and voices of children and young people are the heart of everything that we do in Lambeth.





Children's rights: an introduction

Children and young people are humans in their own right in addition to being a member of a family and community. The United Nations Convention on the Rights of the Child sets out the rights that must be realised for children and young people to reach their full potential. According to UNICEF UK:

"The Convention has 54 articles that cover all aspects of a child's life and set out the civil, political, economic, social, and cultural rights that all children everywhere are entitled to. It also explains how adults and governments must work together to make sure all children can enjoy all their rights." (www.unicef.org.uk/what-we-do/un-convention-child-rights)

Children have the same general human rights as adults and specific rights that recognise their special circumstances. The Convention makes clear the idea that a basic quality of life should be the right of all children and young people, rather than a privileged few.

See below a child and young person friendly version of the UN Convention on the Rights of the Child.





Our journey

Partnership Away Day

In March 2021, Lambeth Children's Partnership came together to consider Lambeth's potential journey on the UNICEF UK Child Friendly programme. In this session we discussed several areas:

- Is this the right journey for Lambeth at this time?
- What are the opportunities for Lambeth in engaging in this programme?
- What are we already doing and where are our strengths that could support us in gaining child friendly community status?
- What are our concerns and challenges that we need to consider?
- Where are our priorities of work that this programme may help us focus on and progress?
- How can we best work together as a partnership across Lambeth to support this work?

The Away Day facilitated rich debate amongst all partners resulting in a firm commitment that Lambeth should embark on this ambitious journey, commencing with a formal Expression of Interest.

The full Away Day report is available upon request.

CFL logo



The CFL team launched a competition across Lambeth schools for our children and young people to design the official logo for the programme. There were many creative and imaginative entries, and the CFL team were delighted to attend Allen Edwards Primary School in Stockwell to present 10-year-old Kassius with first prize for his winning entry. His colourful design of the CFL hand was then digitised and can be seen on all CFL communications, merchandise and throughout the borough.





CFL Launch

In March 2022, CFL hosted our first in-person programme launch in Windrush Square, Brixton. This event focused on understanding children and young people's priorities for the Lambeth, as well as celebrating the incredible talents of Lambeth's young people through a range of music and dance performances, activities, and stalls from partner organisations including (but not limited to) Lambeth Libraries, Big Kid, The Well Centre, Lambeth Youth Council and the Bureau of Silly Ideas.



We commissioned Young Creators UK to photograph and the vibrancy of the event and insights from consultations, [here's the link to the video](#).

Baseline children's rights staff survey

In November 2021, shortly after joining the Child Friendly Communities programme, CFL launched a survey for all staff across the council and CFL partnership to understand colleagues' current knowledge and understanding of children's rights.

A total of 396 colleagues completed this survey, with 83% indicating that they had never had any previous training on children's rights. 43% were unfamiliar with UN Convention on the Rights of the Child, but just under half stated that they had a good understanding of children's rights and how they apply to the work that they do.

Just over a third said they were comfortable talking to children and young people about their rights. Positively, 90% thought that knowing about their rights helps children and young people get the support that they need. Related to this, 77% agreed that children and young people are interested in hearing about their rights.

69% of staff felt that a child rights-based approach required different ways of working but only a third stated that they had heard leaders talk about children's rights and how a child rights-based approach shapes local decisions currently.



The full report is available upon request.

Socialising the CFL programme

To ensure a full buy-in across Lambeth and the CFL partnership, the CFL team have undertaken over 100 presentations to different forums, partnerships, and boards in the past 12 months. This has not only brought good awareness of the CFL programme and its objectives but has also encouraged colleagues across Lambeth and the CFL partnership to consider how their areas of work can work to become more child friendly going forward. In addition to this, the CFL logo can be seen across the borough, for example: Stockwell





skatepark, on all SEN minibuses and spraypainted in Mawbey Brough Estate multi-use sports area.

UNICEF UK training

CFL launched our virtual training programme facilitated by UNICEF UK colleagues to enable colleagues, partners, young people and elected members to have a more in depth understanding of children's rights and how to work with children and young people as equal partners in decision-making. More than 100 people have attended so far and training will continue throughout the lifetime of the programme.

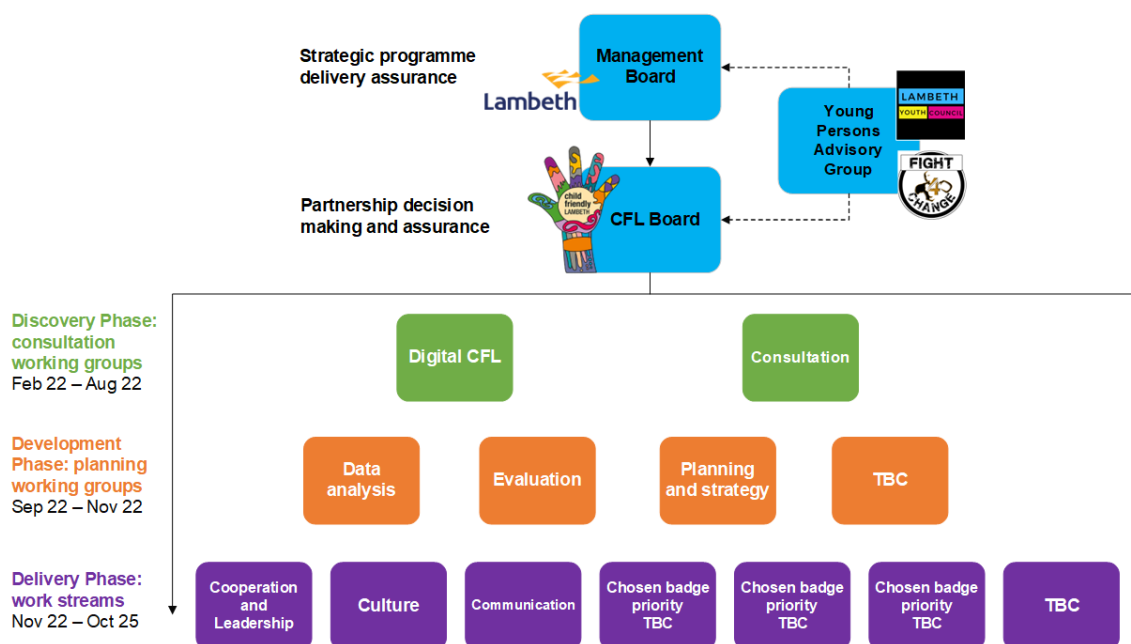
Programme governance

The CFL Board assumes overall responsibility for the design and delivery of Lambeth's Child Friendly Communities Programme. The role of the Board is to focus on leadership and the Council and partners' commitment to the CFL Programme, driving an ambitious and multi-agency partnership approach to putting children's rights and voices at the heart of Lambeth, in accordance with UNICEF UK programme expectations.

The Young Persons' Advisory Group for CFL is based on a hub and spoke model with Lambeth Youth Council (LYC) making up the hub, and Fight4Change Young Advisors constituting the spoke. Representatives from LYC sit on the CFL Board and give regular updates. In order to ensure that Board information, actions and decisions are accessible to these young people, every CFL Board pack includes a child friendly information coversheet.

A number of partnership task and finish groups sit under the Board to focus on emerging aspects of work. These will continue to evolve as the programme progresses, particularly once UNICEF UK priority badges have been selected.

CHILD FRIENDLY LAMBETH GOVERNANCE STRUCTURE





Who are Lambeth's children and young people?

Nearly a third of a million people (322,000) live in the London Borough of Lambeth. It has one of the largest geographic areas of any inner London boroughs and is one of the most densely populated areas in the country with approximately 63,210 children and young people under the age of 18 live in Lambeth: 19% of the total population and rising.

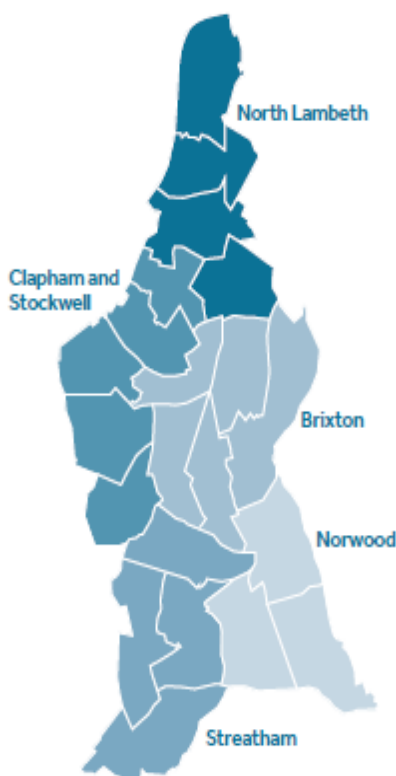
Lambeth is an exciting place to grow up, live and work. It is a diverse borough where many different communities thrive. However, there are still many children who experience deprivation, disadvantage, and exclusion. 43% of children in Lambeth currently live in poverty.

Population and deprivation

- Approx. 63,210 children and young people under the age of 18 live in Lambeth – 19% of the population and rising.
- 5th most densely populated borough nationally.
- 43% of children in Lambeth are living in poverty (after housing costs).

Very diverse

- Lambeth is ethnically diverse. 63% of children and young people are Black, Asian, or Multi-Ethnic, compared to 21% nationally.
- Significant Portuguese-speaking community.



High need

- 17.8% of pupils in Lambeth schools are identified as having Special Educational Needs (SEN).
- 3,848 (9.8%) of five to 16 year olds have a mental health disorder.
- Lambeth had the highest national numbers of victims of serious youth violence in years 2018-19.

Changing

- Lambeth has a transient population, approx. 12%.
- Inequality in the borough is rising.
- Lots of growth and development in the north of the Borough.

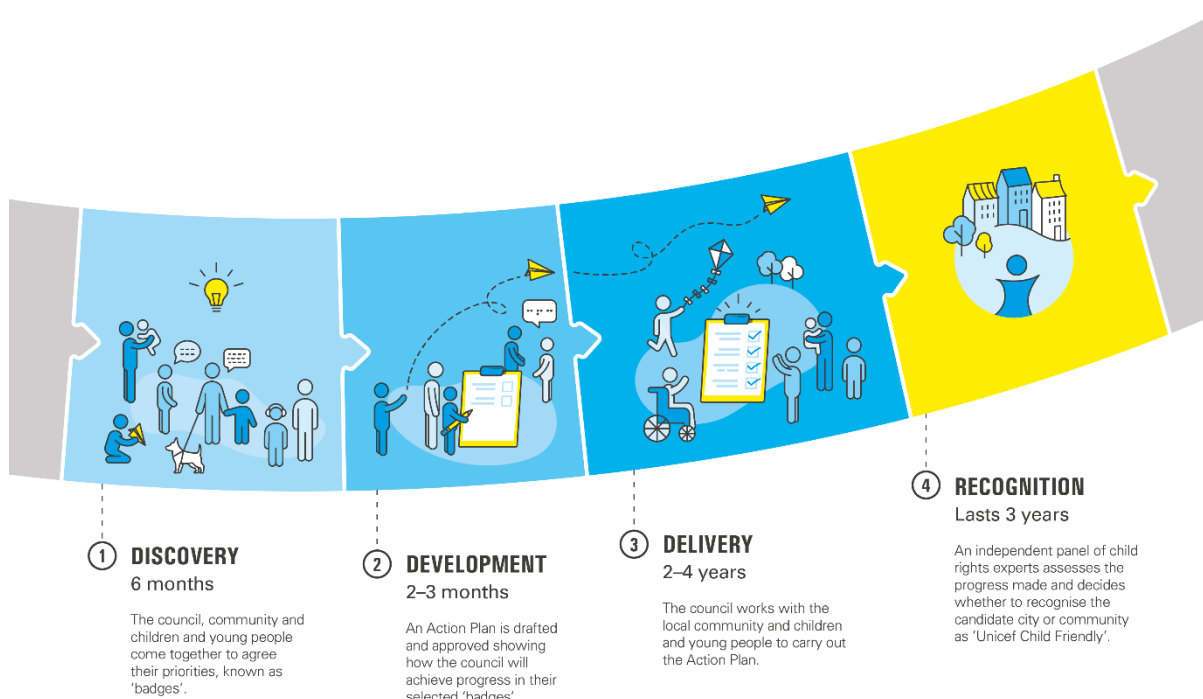
Lambeth has a young population, with a mean age of 33 years compared to 36 years in London and 40 in England. Lambeth's population is one that reflects a young, urban demographic. It is a place of substantial population churn, yet also encompasses communities of well and long-established communities, including migrant and ethnic minorities. When considering first languages in the borough, approximately 45% of pupils in Lambeth state-funded education have a first language other than English. This is comparable to the London figure of 44%, and higher than the England average of 19.3% (Department for Education, 2021a).



How did we listen to young people and who did the programme speak to?

The UNICEF UK Child Friendly Communities programme follows a series of four phases: Discovery, Development, Delivery and Recognition (see below graphic). The first – Discovery Phase – lasts approximately six months and focuses on consulting with a large and representative sample of children and young people in Lambeth to understand their opinions, priorities for the area they live in, and how they'd make it more child friendly.

In line with this, between February and August 2022, CFL consulted with 1551 children and young people aged two to 25 living in Lambeth, through a variety of engagement methods, detailed in this report.



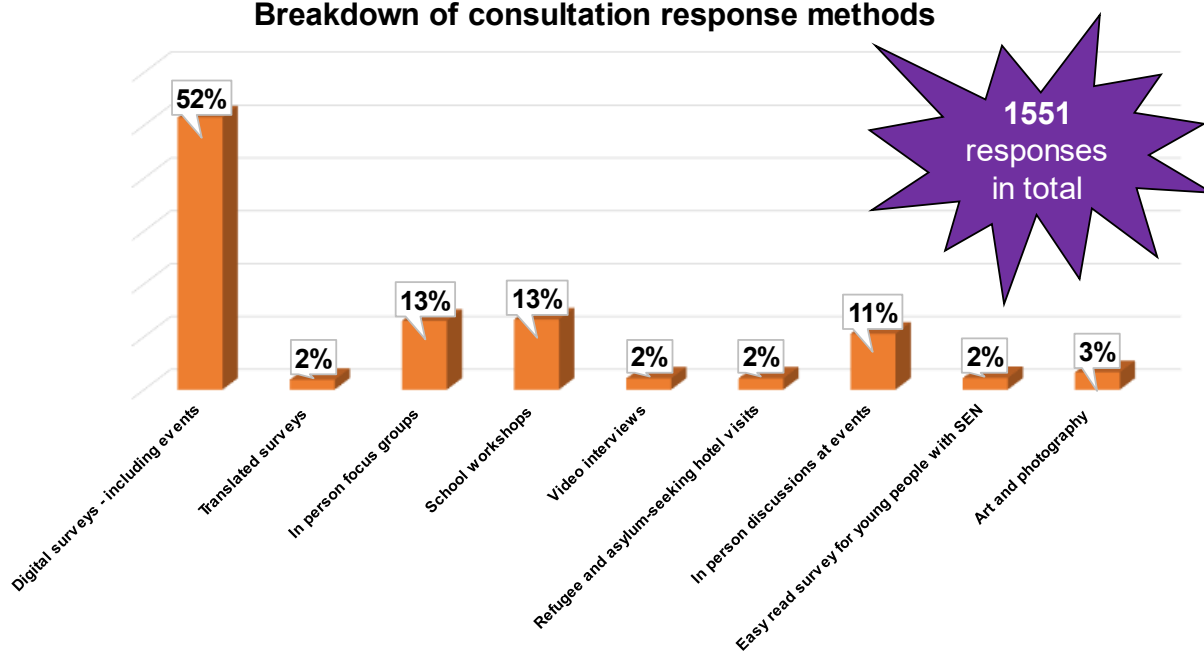
Creation of consultation methods

In preparation for consulting with a wide and diverse number of Lambeth's children and young people (CYP), it was crucial that CFL established a Consultation working group comprised of a range of professionals from the CFL partnership. Members included colleagues working regularly with CYP from education settings, voluntary and community sector organisations, health and commissioning settings. This Consultation working group shaped the format and content of CFL questionnaires and resource kits, taking different needs and abilities of CYP into consideration and applying their expertise to refine the question set.

Once questions were devised and approved by the working group, the next crucial stage was piloting the questions with members of the CFL Young Persons Advisory Group i.e. Lambeth Youth Council and Fight4Change Young Advisors. CFL incorporated their valuable feedback on format, length, content, and accessibility of the questions into the surveys.



Breakdown of consultation response methods



Child Friendly Lambeth digital surveys

As can be seen from the above chart, our most popular consultation method was digital surveys. Our surveys were completed by CYP independently on their smartphones and PCs, as well as used by the CFL team and volunteers on iPads at a variety of events in the borough to ask questions to CYP in-person and record their answers.

We had a longer version of our CFL survey, with detailed quantitative and qualitative questions around children's rights, health, wellbeing, safety, poverty, opportunities, and ways to make Lambeth more child friendly.



We also had a shorter version of this survey which focused on a few key questions and was used more with younger children and at events where time was scarcer. Further detail on adapted digital surveys can be found below.

For all our surveys, we created QR codes, so it was easier and quicker for CYP to access. This QR code was particularly useful on our boroughwide digital *Over to YOUth!* posters, live on BT advertising screens throughout our consultation phase. All of our surveys (and consultation resource packs) were also available via our CFL website.

School workshops and focus groups

Using the CFL consultation resource kit – which included printable lesson plans and activities centring on our consultation questions – CFL facilitated a series of workshops in



Lambeth primary schools: Fenstanton, Glenbrook and Allen Edwards. In collaboration with an Empowerment Officer at these schools, CFL encouraged debate and discussion amongst young people from years 5 and 6 around the UNICEF UK priority badge themes.

CFL also organised a series of in-person focus groups with Air Scouts, care leavers, Lambeth Youth Council and Fight4Change Young Advisors.

Engagement at community events

Through strong relationships with our CFL partnership, CFL colleagues and volunteers attended a series of community events over the six-month consultation period, see table below. A range of council colleagues and members of Lambeth Youth Council volunteered to deliver consultations with the core CFL coordination team and their participation was intrinsic to the success of Discovery Phase.



CFL understood the benefits of attending events and spaces where children and young people were already convening in order to consult with as many as possible.

Community event	Month in 2022
CFL event in Windrush Square, including consultations through play with Bureau of Silly Ideas	March
Marcus Lipton Community Centre HAF events	April and August
Brockwell Bounce Children's Festival	May
Superheroes Picnic for children in care and foster carers	May
Lambeth Festival of Apprenticeships	June
Mawbey Brough estate events	June and July
Myatt's Fields estate event	July
Lambeth Country Show	July
Ebony Horse Club Community event	July
Surrey Cricket Club summer event	July
Refugee and asylum-seeking children hotel visits and event	August

Partner-led consultations

From the outset, CFL worked closely with voluntary and community groups who are fully embedded within Lambeth's local communities and have built strong relationships with children and young people in those communities. The organisations undertook some of the consultations on behalf of the programme. For example, Officers within the Lambeth's Young Offenders Service (YOS) took an active role in consulting with young people they work with regularly.





CFL also worked closely with existing youth forums including Lambeth Youth Council, Visions of Success (Lambeth's Children in Care Council) and Fight4Change Young Advisors. We recognised that young people are more likely to speak to other young people more honestly and openly, so we worked with young people to undertake peer consultations as part of the programme.

Vox pops by Young Creators UK

We commissioned Young Creators UK – creatives all 21 and under – to work with us at our Child Friendly Lambeth in-person launch event in Windrush Square in March 2022. Through vox pops – i.e. short video responses – they spoke to a range of teenagers and young adults about their priorities for Lambeth and how to make the borough more child friendly. The responses from this activity are included in our Child Friendly Lambeth Event in Windrush Square video.



I Have a Voice!

CFL paid London Living Wage to 18-year-olds from social enterprise I Have a Voice! to spend a few afternoons in busy areas of Lambeth during the summer holidays consulting with young people. Using both the CFL digital survey and some more in-depth conversations captured via audio recording, they spoke to a wide range of local young people.

Easy-Read Child Friendly Lambeth Questions



Easy-read adaptation

We worked with Lambeth's in-house Adults Disability team and SEND colleagues to create an easy read version of the CFL survey. Using their specialised knowledge, they devised a pictorial questionnaire which was then used by adults working with children and young people with SEN, including many young people known to the YOS.

Translated and interpreted versions of the CFL survey

We translated the short version of our CFL survey into the six main foreign spoken languages of Lambeth: Arabic, Polish, Portuguese, Somali, Spanish, and Tigrinya (see graphic below). Further to this, CFL hired interpreters for various in-person engagements to ensure that non-English language speakers' voices were heard and included in these consultations.

These translated and interpreted surveys were particularly useful when engaging with mostly Arabic and Dari-speaking asylum-seeking and refugee children, Portuguese-speaking pupils at a *Somos Lambeth* event and in consulting with Elays Network Somali youth groups.





Asylum-seeking and refugee engagements, survey adaptation and use of interpreters

CFL worked with Lambeth Sanctuary Service to adapt our CFL surveys to be more appropriate for refugee and asylum-seeking children, young people and families currently homed in Lambeth. The adapted question set had more of a focus on lived experiences and hopes for the future.



We organised engagements in two different hotels in Lambeth where these young people are currently living: one in Vauxhall, and another in Streatham. CFL hired interpreters to ensure inclusion of these children's voices. As part of this, we set up an art workshop in collaboration with The Brixton Project, where these young people and their families were encouraged to visually depict their definition of 'child friendly' as well as some of their own



hopes for the future. This work fed into the creation of the St. Matthew's Estate CFL mural and will also feature in our upcoming Child Friendly Lambeth exhibition in Lambeth Town Hall and on the CFL website.

CFL art workshops and creation of mural

Within the context of children and young people best expressing themselves and their opinions through different channels, we commissioned The Brixton Project to undertake creative workshops with teenagers from Lambeth. The foci of these artistic sessions were children's rights and their priorities for young people in growing up in the borough. The results of these workshops, in addition to the creative workshops with asylum-seeking and refugee young people in August 2022, created the basis and inspiration for the Child Friendly Lambeth mural installed on St. Matthew's Estate in Effra Road, Brixton.



It is important to note that some of the young people involved in these workshops and mural creation live on the estate where the mural is installed. There was also community

consultation about the mural with members of the estate's tenants' and residents' association (TRA), as well as social media communications and a billboard in Atlantic Road showcasing the mural, its creation, and the Child Friendly Lambeth programme generally.



Under 5s photo activity



To ensure that the voices of early years children were also captured as part of our Child Friendly Lambeth consultations, we devised an under 5s photo activity. Children and families from Hitherfield, Streatham Hub and Sunnyside children's centres as well as the Mud Club play area in Clapham Common all took part in this photo activity.

Using disposable cameras provided by CFL and families' smartphones, we asked families to support their young children in taking photos of their favourite activities and places in Lambeth. The array of photos submitted include early years children and their families and friends

playing in parks, sandpits, mud, on their bikes, in waterparks, at parties and enjoying nature.

We have received over 230 photos from both disposable cameras and mobiles. We are working with Lambeth's Cultural Development team as well as young creatives from Lambeth Youth Council to exhibit these photos both physically in Lambeth Town Hall and digitally on our website as an artistic, visual representation of CFL's consultation period. [See page 27 in this document for a small selection of these photos.](#)



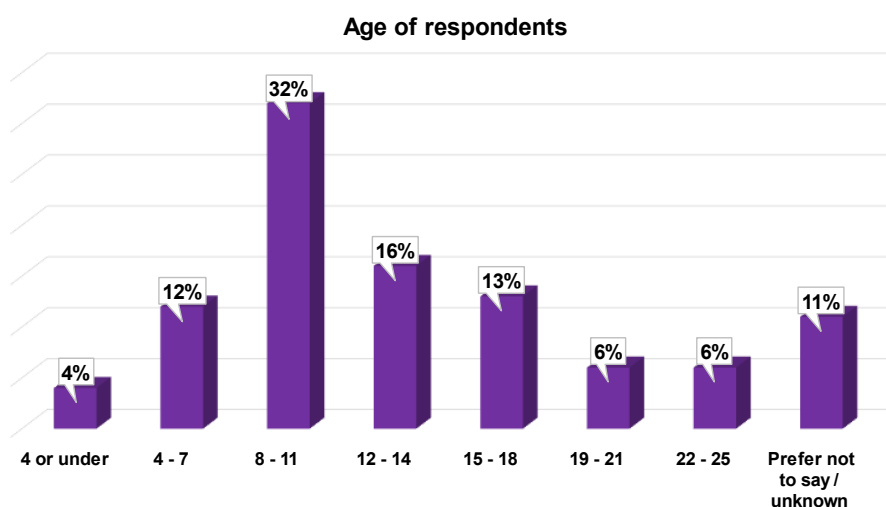
Demographic breakdown of respondents

Gender identity

54% of respondents identified as female, 44% as male and then 2% identified as either transgender, non-binary, or genderfluid/genderqueer.

Age

Of those who specified, over half (54%) of respondents were aged two to 11. Just under a third (32%) were aged 12 – 18 and then 14% were aged 19 – 25.



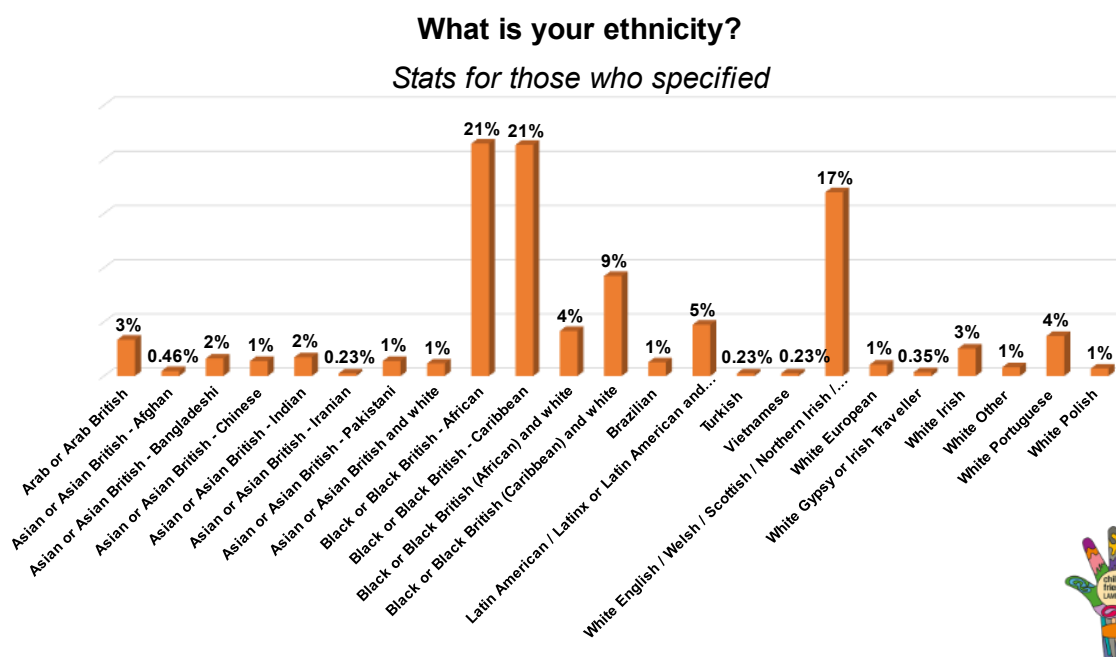


Ethnicity

According to recent Lambeth demographic data, “around 80%” of under 20s in Lambeth describe their ethnicity as other than White British ([Lambeth Council website](#)). The ethnicity breakdown of respondents to our CFL consultations similarly shows that 83% self-identified as non-White British.

Of those who specified, over half (53%) of respondents were either Black or mixed-race i.e. Black British, Black African, Black Caribbean or Black mixed-race. 17% identified as White British, and a further 11% as of another White background e.g. White Irish, White European, White Other. 9% identified as Asian, 6% as Latino/x and 4% as Arab.

See full ethnicity breakdown of respondents below.



Languages spoken

A fifth of respondents stated that English was not their first language.

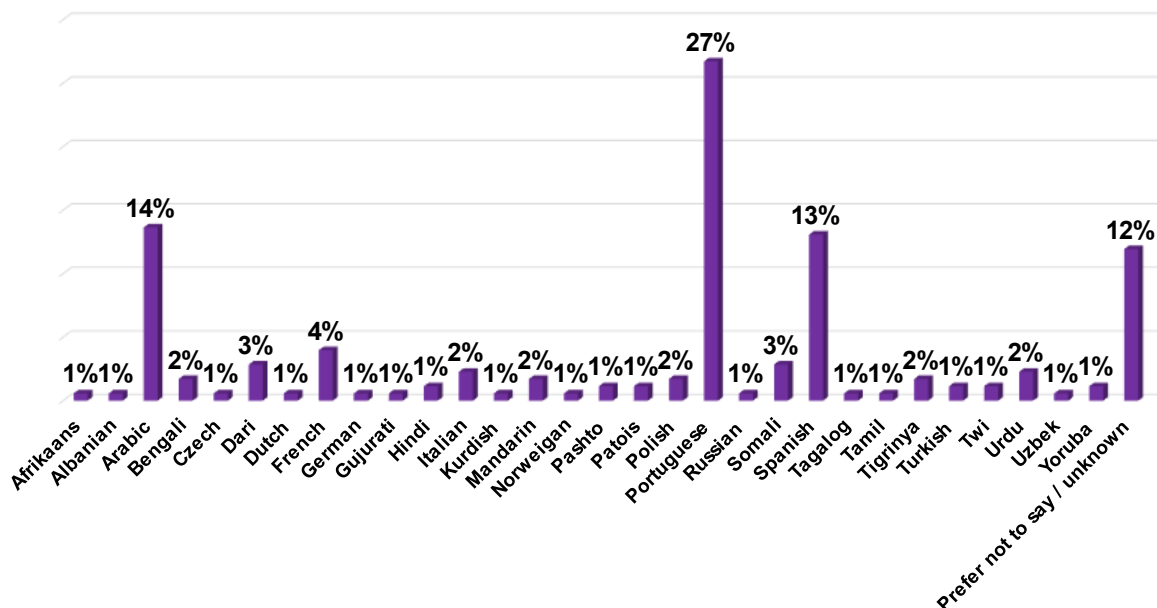
Portuguese represented just over a quarter (27%) of respondents' first language (where it wasn't English). This high percentage represents both the fact that Lambeth is home to the largest Portuguese-speaking community in the UK and that Portuguese is the second most spoken language in the borough after English, but also due to the fact that CFL specifically attended Portuguese and Lusophone events as part of consultation.

The second most spoken foreign language of respondents was Arabic (14%), and this was mostly due to a high number of asylum-seeking and refugee CYP that CFL engaged with that spoke this language.



See full language breakdown of respondents whose first language is not English below.

If English isn't your first language, what is?

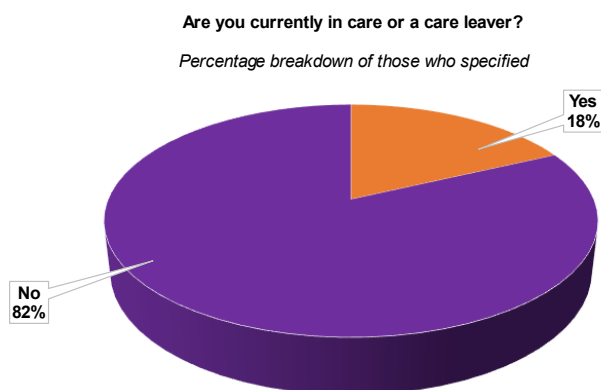


Disability and long-term health conditions

Of those who specified, 9% of respondents indicated that they had a disability and/or long-term health condition. This compares to Lambeth demographic data which indicates that 12.7% of the borough population has either a disability and/or long-term health condition. N.B. this statistic is for the whole population of Lambeth, not just under 25s (Source: [Lambeth Council website](#)).

Children in care and care leavers

Of those who specified, just under a fifth (18%) identified themselves as either in care or a care leaver. This percentage can potentially be attributed to the fact that CFL made efforts to ensure the voices of these young people were central to consultations, attending various children in care and care leaver forums and events over the six-month consultation period.



Two care-experienced Project Officers also support the CFL programme on an ad hoc basis and provide valuable insight at the CFL Governance Boards.



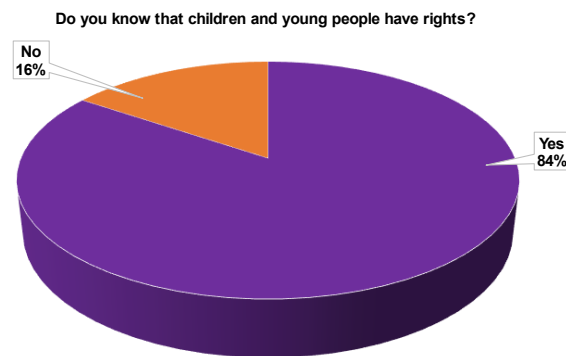
What did Lambeth's children and young people say?

Child and young person friendly consultation results video

CFL commissioned [this short animation video](#) to showcase the headline data from our consultation results analysis so that children and young people can easily digest the information and meaningfully engage in voting for their UNICEF priorities for Lambeth.

Children's rights

84% of those who answered the CFL survey knew that CYP have rights. When we asked our cohort of 33 asylum-seeking and refugee CYP, 55% knew they had rights, meaning almost half were unaware.

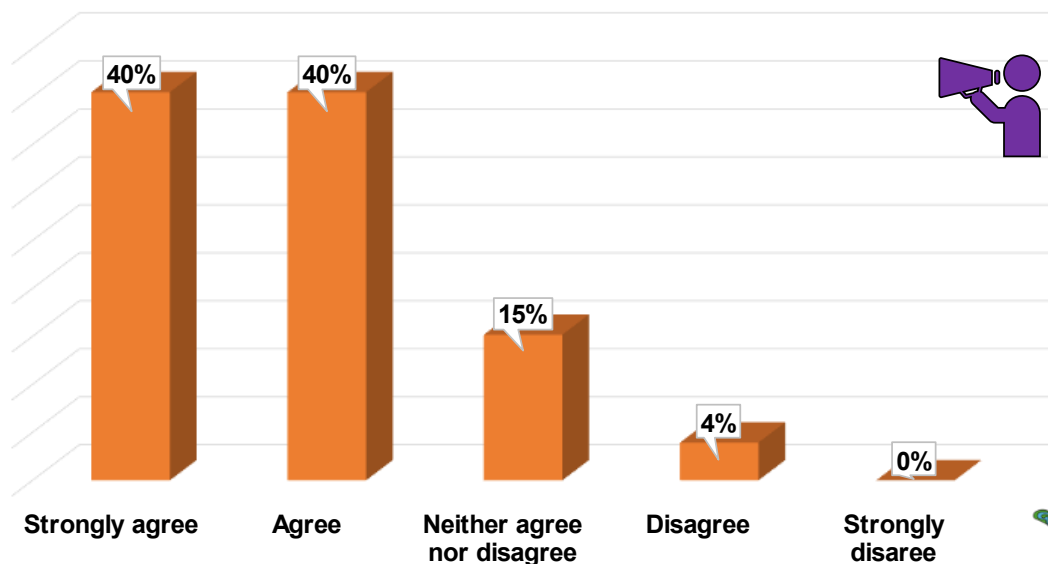


Decision-making and communicating with young people

80% of CYP said they would like to be more involved in decisions that affect their lives.

However, a third of CYP who weren't sure if they already had a say in decisions that affect their life, and a further 36% who either disagreed or strongly disagreed that they didn't.

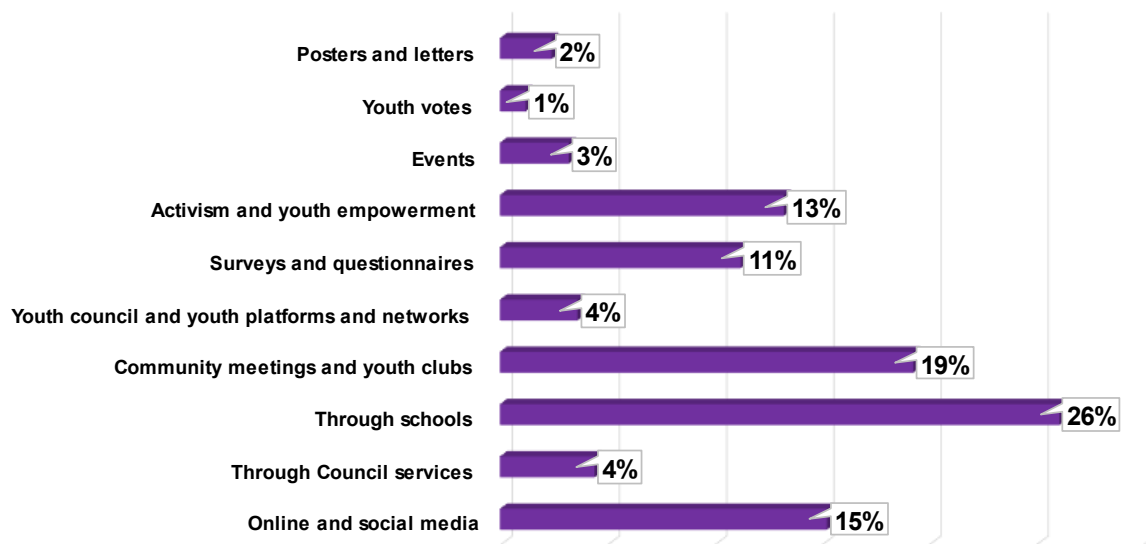
I would like to be more involved in decisions that affect my life





When asked what the best ways to hear CYP's voices and opinions were, half of young people said that the best ways to communicate with them are through schools, youth clubs and youth networks.

How can Lambeth Council and other services hear what you have to say?



Here were some of the ways that CYP suggest we listen to them:

- “Have more surveys like this and more people in power listening to our opinions.”
- “We could nominate members of our school to speak up or have voting systems in schools to let us vote on decisions that affect our lives. Come into our schools and talk to us.”
- “I think we should reinstate the youth mayor.”
- “Employ young people in our local communities to gather our voices.”
- “Use social media better to talk to us and child friendly newsletters and information.”
- “Invite us to meetings so we can speak directly to you.”

Children and young people's experiences in Lambeth

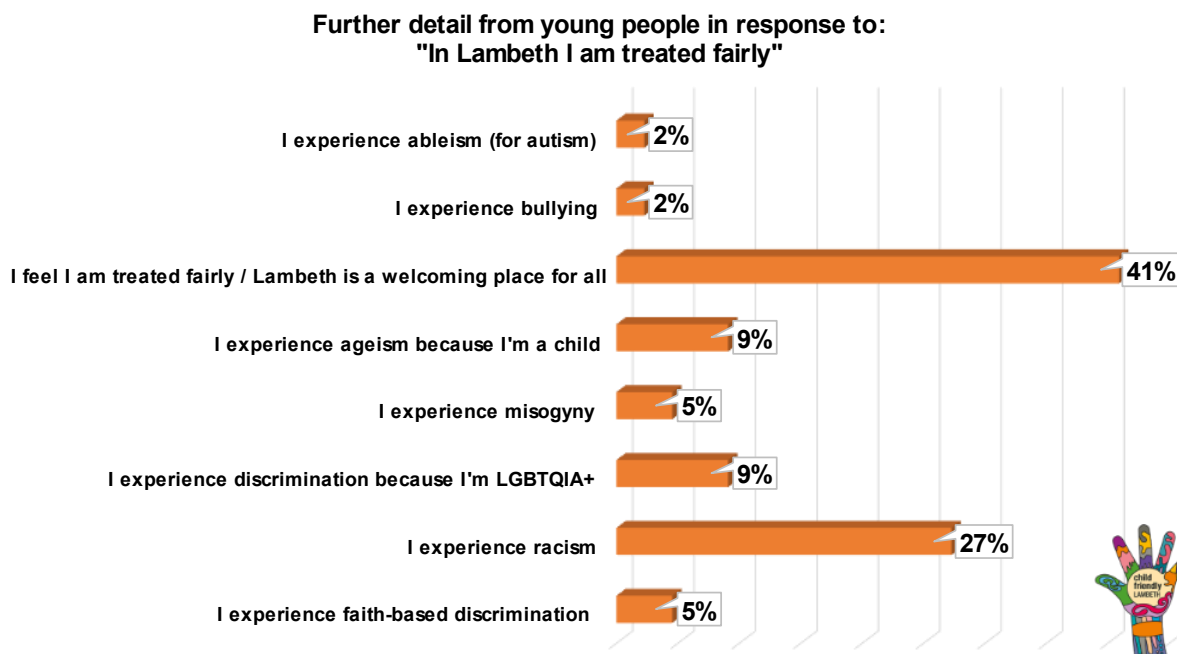
Just under half (47%) of CYP indicated that being a Lambeth resident is important to them. This links with the fact that a third of CYP also felt that the best thing about the borough are the people and vibrant communities.

54% of CYP stated that they feel free to enjoy themselves in Lambeth and explore the world around them. However, 22% felt they were not free to do so.



43% of CYP felt treated they were treated fairly in Lambeth, just under a third (32%) weren't sure, and just under a quarter (24%) indicated that they did not feel they were treated fairly where they live.

See the below graph for reasons why CYP in Lambeth don't feel treated fairly.



Below are some quotes from CYP who don't feel they are treated fairly:

- "People of colour are racially profiled and searched too often."
- "I feel like I am treated fairly in and around where I live, but I do feel people of other races have more of an advantage."
- "I feel that because I am Black, I have to work two times as hard as my White companions to be on the same level."
- "As a queer young person, I often don't feel safe."
 - N.B. Only 17 respondents identified as either transgender, non-binary, genderfluid or genderqueer, but of these respondents, more than half of them felt they were not treated fairly in Lambeth.

Place, space, and access to opportunities

Over half of young people (51%) said their favourite things about Lambeth are the parks, green spaces, leisure facilities and free events. Over a third said that to make Lambeth more child friendly, they'd want to see more well-maintained public facilities e.g. leisure centres, green spaces and better playgrounds with more equipment for them to play on.



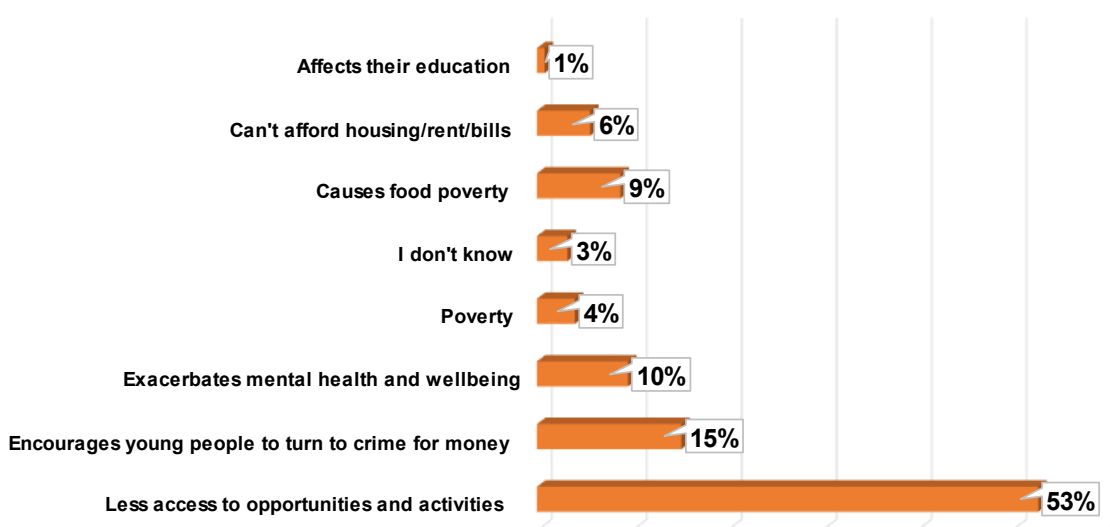


It was positive to hear that 86% of CYP felt that they have clean spaces to hang out in Lambeth. However, just under a quarter (23%) of CYP also felt that less pollution and traffic in Lambeth would improve the borough and make it more child friendly.

45% of CYP felt there are good clubs, groups and activities for them to join in Lambeth, but just under a third (32%) were not sure. It is worth noting that a quarter of young people said that to make Lambeth more child friendly, they'd like more youth clubs and affordable activities for young people e.g. social, sports, art, music, academic.

Over half (53%) of CYP highlighted that having less money means less access to opportunities and activities. Relating to this, 41% of young people said that free or more affordable sports and fitness facilities and activities (e.g. subsidised swimming) for young people would help make young people in the borough healthier.

How do you think having little money affects children and families in Lambeth?



Below are some quotes from CYP focusing on the impacts of having less money:

- “I have lived here all my life, as has my mother and my grandmother came as part of the Windrush like many thousands of people. Black people in Lambeth are many. Black people provide culture and entertainment, food music, dance and so much more. But black people do not own. As a collective such a small percentage of black people own their own land, property, their homes, or workspaces. Blackness and poverty intersect.”
- “It reduces opportunities both in education and extra curricula activities. People cannot afford to go out and do activities.”
- “People who need money quickly look for fast money which often includes illegal methods, so more young people getting into crime.”
- “It is tough because Lambeth is a key area of London but that means house prices and living costs are really high and put a strain on people young and old. Lambeth



offers are now in terms of independent businesses and cool places to visit now and there is a great diversity of people, but prices limit how involved you can get which can sometimes make living in Lambeth feel a bit segregated.”

- “It affects people’s mental and physical health as they cannot afford healthy food or do activities.”

Health and wellbeing

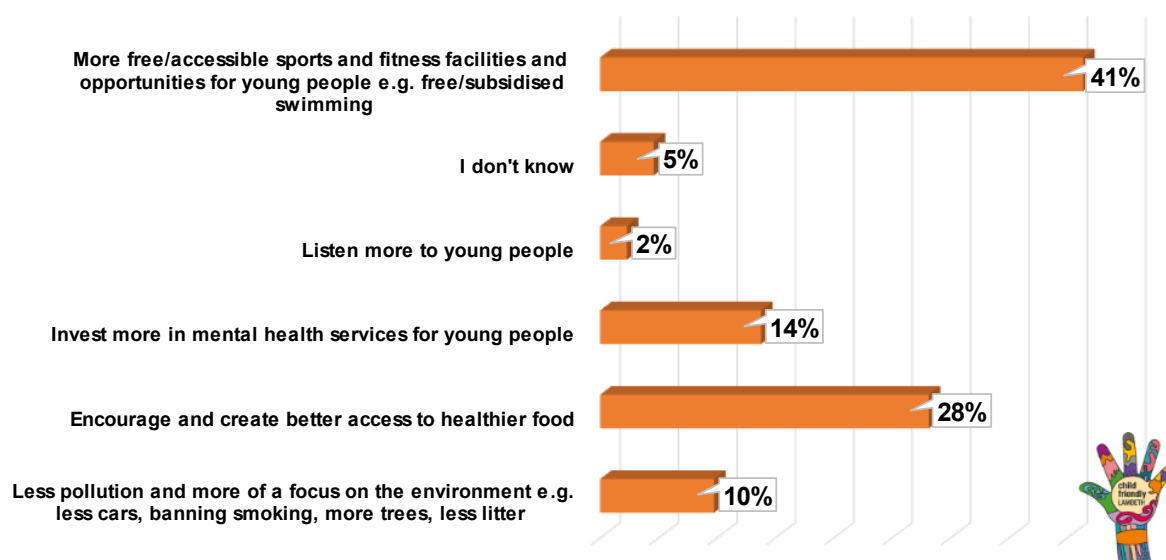
When asked where they can get help with their wellbeing and how they feel, just under two thirds (74%) of CYP either agreed or strongly agreed that their family and friends would be supportive.

Just under half (47%) felt they could get support from their school or college. A third (33%) did not feel they could get this kind of support from services in Lambeth, and 42% were unsure whether they could.

CYP’s ideas to help CYP in Lambeth be healthier focused mainly on better access to affordable sports and fitness facilities (41%) and encouraging and enabling healthier eating (28%).

See below graph for further information.

What are your ideas about how children and young people could be healthier in Lambeth?



Here are some of CYP’s ideas on how to improve health for CYP in Lambeth:

- “I think the climate is important and Lambeth should be cleaner.”
- “More gym places and swimming that we can go to, they are too expensive.”
- “All the tennis courts get booked up too quickly, mostly by coaches!”

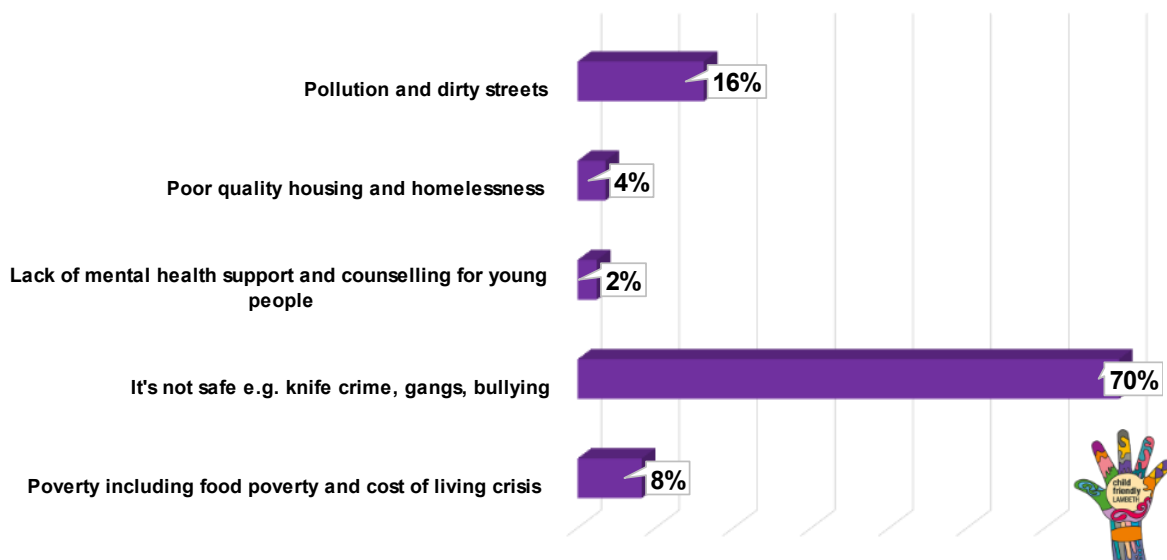


- “There should be more sports groups that young people can join and get exercise; we could create the Lambeth Olympics!”
- “More support for young people with their mental health and not to wait until it is in crisis. We should have more mindfulness classes in school and where we live.”
- “Less fast-food deals and cheaper healthy eating places.”

Safety

59% of CYP said that their definition of “child friendly” would be a place of safety. However, 70% of young people think that the biggest issue facing young people in Lambeth is the lack of safety, mostly citing: knife crime and serious youth violence.

What do you think are the biggest issues facing children and young people in Lambeth?



Here are some of CYP's responses around the biggest issues facing them and other CYP in Lambeth:

- “Gangs, guns, and knife crime, I don’t feel like our streets are safe for us.”
- “Very high rent and air pollution, there are too many cars, and our roads are not safe.”
- “Not enough support for young people with mental health issues.”
- “We can’t vote, we want more of a say.”



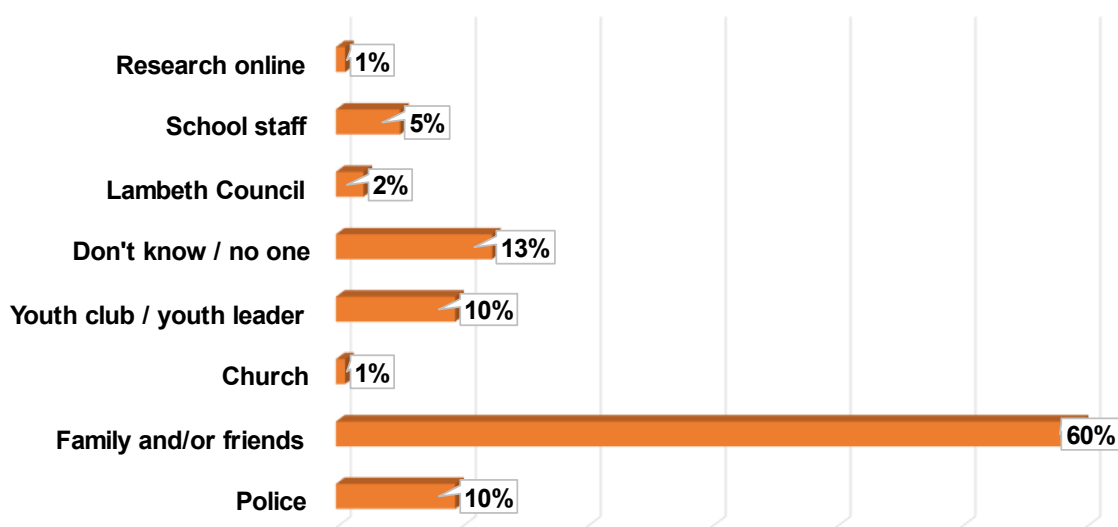
- “We are poor.”
- “I think the biggest issues is the fact that there is not enough clubs and social hangouts for children and young people.”
- “Nowhere to play on the estate where I live, we get shouted at for playing out.”
- “Lack of opportunities for internships, apprenticeships, and jobs.”
- “Not enough bins, too much litter.”
- “Child poverty.”

60% of CYP said that having a safe place to spend time with friends is important to them. However, 30% expressed they don't feel they have a safe space to hang out in and don't feel safe travelling around the borough.

More positively, 44% of CYP felt they did have safe spaces in Lambeth, and over half (53%) felt safe travelling in and around the borough.

When asked who they would seek support from if they felt unsafe, 60% identified their families and friends.

Where would you go and who would you talk to if you felt unsafe?



In qualitative responses to this question, CYP's attitudes towards the police varied, as highlighted in the two below quotes:

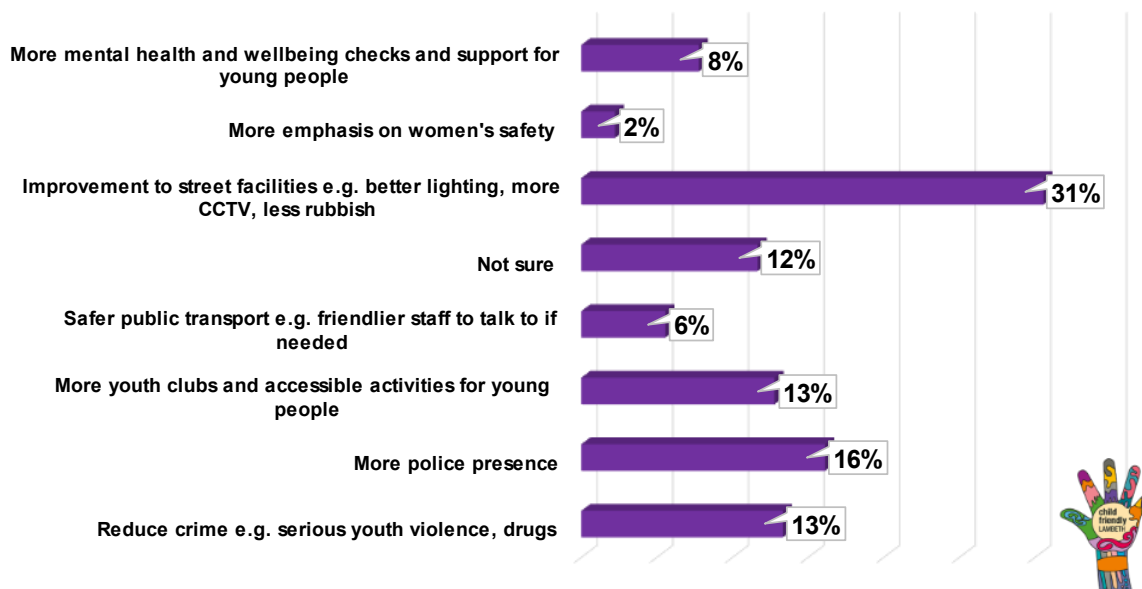
- “I don't know, If I was attacked, I am not sure I would feel comfortable reporting it to the police.”
- “I would go to the police; we need more police in Lambeth on the streets to help us keep safe.”



Just under a third (31%) of young people said that an improvement to street facilities – e.g. better lighting, more CCTV, and cleaner streets – would make them feel safer in Lambeth.

See below graph for further information on how CYP would improve safety in Lambeth.

How can Lambeth make the place where you live feel safer?



Here are some of the ways CYP felt safety could be improved in Lambeth:

- “More streetlights and CCTV on the streets.”
- “More things for young people to do in the evenings and safer places for teenagers to hang out.”
- “Protected cycle paths, pedestrianisation, electric bus routes, low traffic neighbourhoods.”
- “I don’t feel safe on transport and the bus drivers are not helpful or supportive. I would never sit upstairs on a bus alone. Lots of crime and harassment happens on buses.”
- “Lots of problems are about the safety of women and girls as well as children so maybe we can do more for them to keep them safer.”
- “More outreach youth workers on the roads.”
- “More funding to prevent the causes of crime (poverty, unemployment, lack of educational attainment). I’d like to see more treatment of crime as a trauma issue, and funding allocated as such.”



- “Get rid of gangs, lots of youths dealing and doing drugs in cars with loud music, this must stop.”

Children and young people’s favourite things about living in Lambeth

Over half (51%) of CYP said that their favourite thing about living in Lambeth were the parks, green spaces, leisure facilities and free events. Just under a third (31%) identified the people and vibrant communities of Lambeth as their highlight of where they live.

A selection of qualitative responses from CYP on their favourite things about Lambeth:

- “The parks and local centres, I love the skateboarding parks.”
- “Lambeth has a nice community feel and is really diverse. There are lots of cultural activities, a sense of cultural identity, roots!”
- “That a lot of people from different backgrounds can play with each other, this couldn’t happen in the past.”
- “I feel a bit safer here than in other boroughs.”
- “We have good schools and funny people.”
- “The community and networks are great, understanding that there is a need for development and acknowledging that, it needs to be youth led.”
- “Because I am a care leaver, I am eligible for free council tax until I am 25.”
- “Our shops are good, now we have flats and a balcony.”
- “Our heritage and history.”



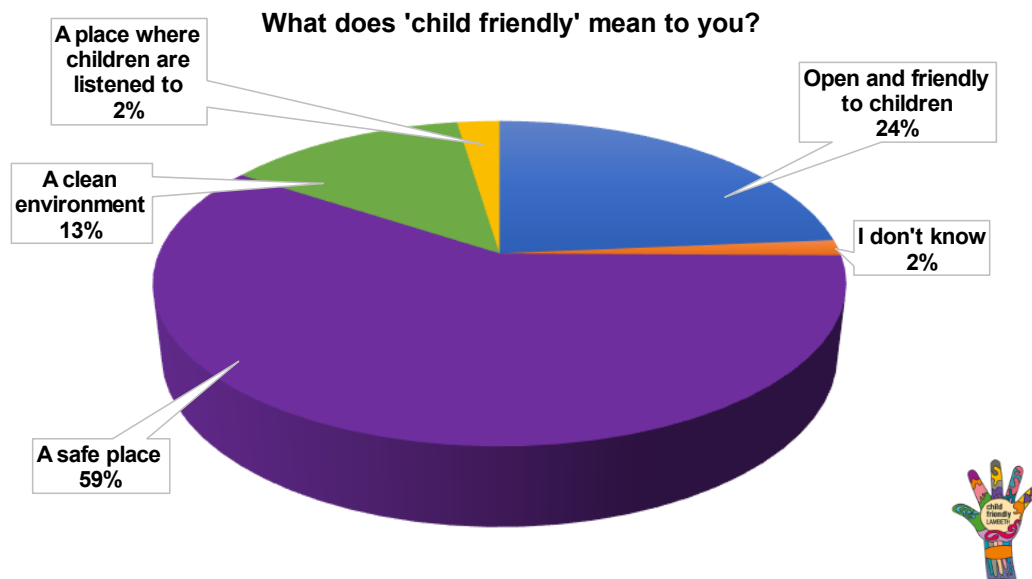


Below is a small selection of photo entries from under 5s consultation in response to “what are your favourite things about where you live?”





Definition of child friendly and how to achieve it in Lambeth



A selection of responses from CYP on what 'child friendly' means to them:

- “A safe and fun environment where children feel safe and can play freely.”
- “An environment that thinks about children with inclusion and value at the forefront of its values. An ethos where children are put at the heart of decisions.”
- “Where people respect children’ rights and they respect children and provide for their needs.”
- “Inclusivity, where children are listened to and that we have a say in what goes on, including disabled children.”
- “Being able to explain things to kids in ways which they understand.”

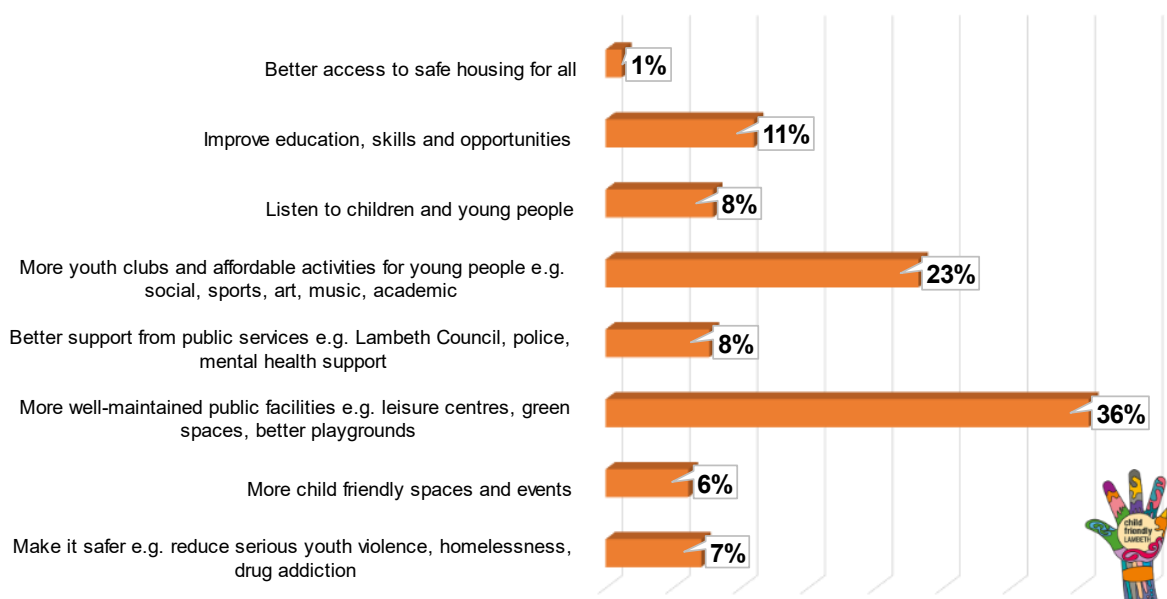
Over a third (36%) of CYP felt that to make Lambeth more child friendly, there should be more well-maintained public facilities e.g. leisure centres, green spaces, and playgrounds with more equipment to play on.

Just under a quarter (23%) of CYP said that to make Lambeth more child friendly, they’d like more youth clubs and affordable activities for young people e.g. social, sports, art, music, academic.





What ideas do you have to make Lambeth more child friendly?



Some of CYP's ideas on how to make Lambeth more child friendly:

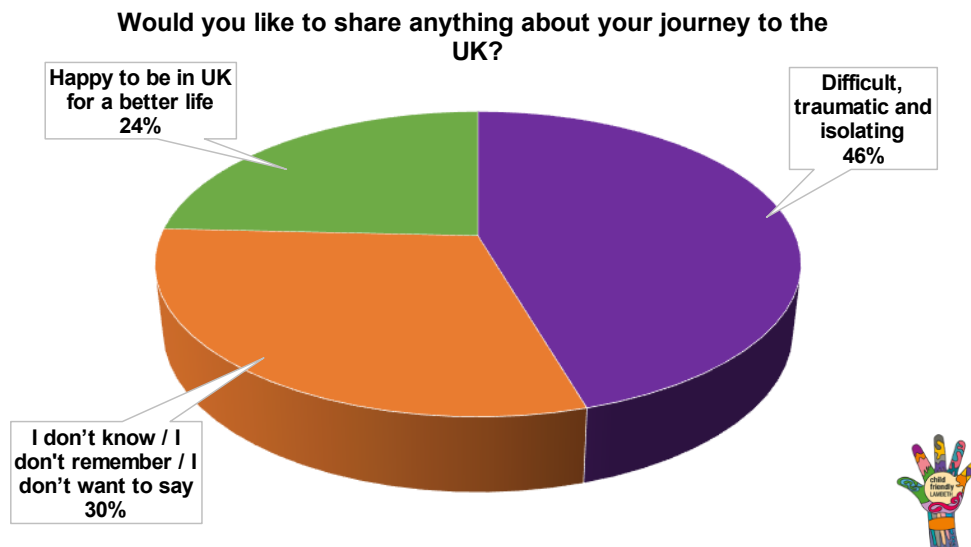
- “Definitely more youth clubs for teenagers and for teenagers to be aware of these clubs.”
- “Free workshops to get children and young people experiencing things they may not ever think of.”
- “More street lighting and safer spaces for children to play, make our parks safer.”
- “Youth representation boards, Lambeth could create peer consultants which would be an employment opportunity for young people. I know Lambeth have limited budgets but getting young people involved in making decisions about how those limited budgets are used would be great.”
- “Get children to help design public spaces ask children their opinions about new big decisions in the borough.”
- “More people understanding what it is like to be a child in Lambeth.”
- “Help people who do not speak English to learn it so they can be more involved.”
- “Play safe streets and street parties, this would bring more people together where I live.”
- “More time and effort into mental health support.”



- “Encourage cheaper or subsidised after school provision and holiday camps which allows children to play and learn in a safe environment keeping them off the streets and becoming vulnerable to grooming of any kind.”

Asylum-seeking and refugee children-specific responses

In August 2022, in collaboration with Lambeth Sanctuary Service, CFL organised consultations with groups of asylum-seeking and refugee children using specifically adapted question sets. Below is a summary of their responses.



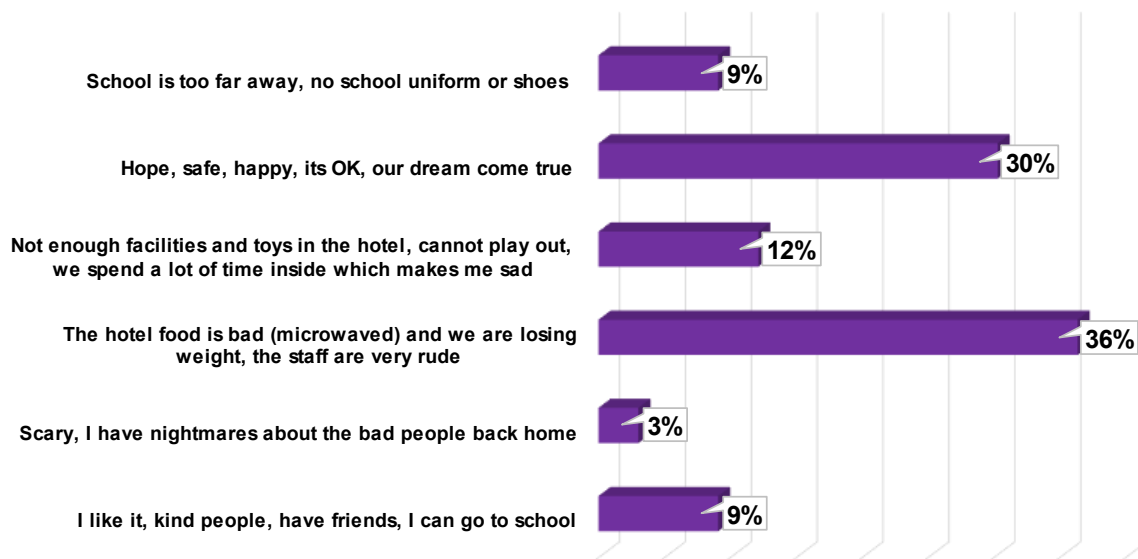
Some of CYP's responses relating to their journey to the UK:

- “The Home Office is not helping; we are separated from my Dad.”
- “We came in a dinghy, very tired and no food.”
- “We came on fake papers which was very scary.”
- “Difficult because of the language.”
- “We left after the Taliban came.”
- “Difficult to start but now I'm at school and I can speak English.”



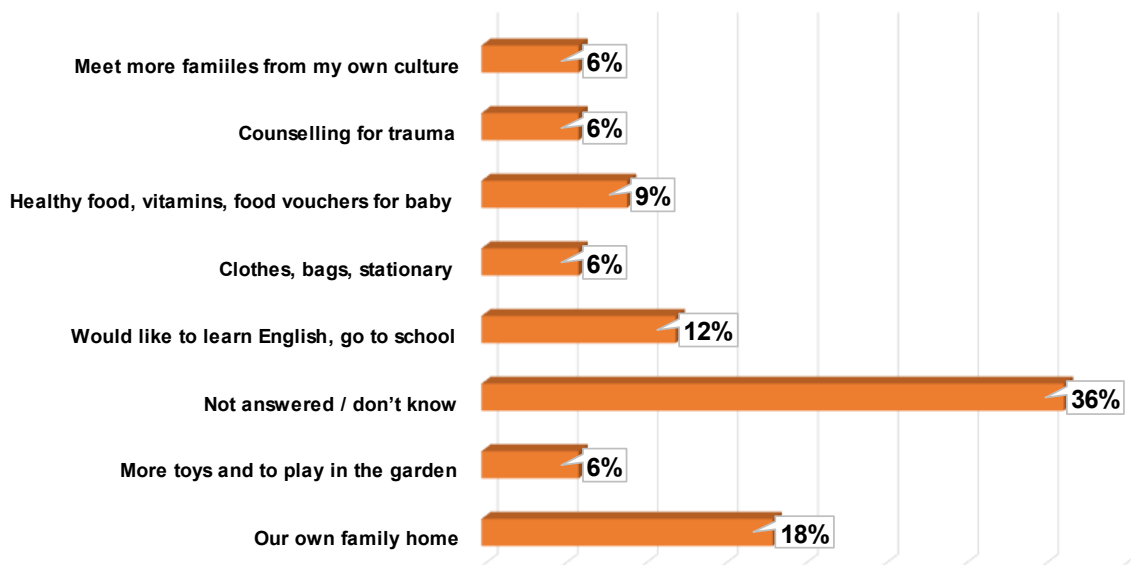


What are your experiences in Lambeth so far?



When asked what support they would like, the answers were varied. Over a third (36%) were unsure. Just under a fifth (18%) expressed that they wanted a home for themselves and their families, touching on themes such as “safe spaces”, “stability” and “freedom” when speaking about this.

Is there any extra support you would like?



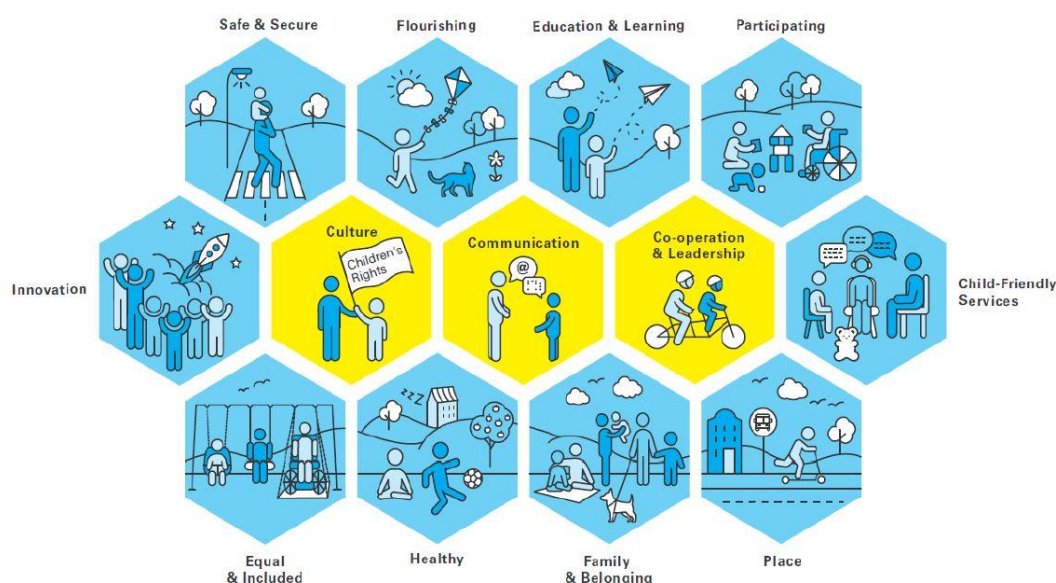


Our next steps

Child Friendly Lambeth's next steps are to widely disseminate this report, the CYP friendly Consultation Results video and overall consultation findings across Lambeth Council and the CFL partnership.

In October 2022, CFL will co-facilitate Discovery Moments with UNICEF UK so that CYP, colleagues, partners and elected members alike can decide on which three blue priority badges they would like to choose for CFL going forward based on the findings from consultations. We will use the CFL Consultation Results video as a child and young person friendly way of sharing the data outlined in this report.

See below honeycomb of UNICEF UK priorities.



The three chosen blue priority badges – in addition to the compulsory three yellow priority badges – will form the basis of the CFL Action Plan. This Plan will outline outcomes that CFL and the partnership will work towards to make Lambeth more child friendly.

Furthermore, the qualitative and quantitative responses from CYP summarised in this report, in addition to the UNICEF UK badges elected, will contribute to and influence the upcoming Lambeth Borough Plan, 2023 – 2030. This is just one positive example of how CYP in Lambeth are having their voices heard and influencing decision-making that will shape the place they live, study, and play in.



Appendices

Appendix 1: How did we consult with children and young people?

Type of consultation	Detail
Digital surveys – including events	Long CFL survey
	Short CFL survey
	Under 4s and families survey
	Online competitions
Translated surveys	Arabic, Somali, Tigrinya, Spanish, Portuguese, Polish
In person focus groups	Air Scouts
	Libraries
	Care Leavers focus group
	Children in care focus group
	Healthwatch focus group
	JSNA focus group
School workshops – using CFL consultation toolkit	Glenbrook
	Fenstanton
	Allen Edwards
Video interviews	CFL Launch video
	CFL Event in Windrush Square video and voxpops (LLW paid)
	I Have a Voice! commissioned video interviews in central Brixton (LLW paid)
Events - in-person discussions	CFL event in Windrush Square, including consultations through play with Bureau of Silly Ideas
	Marcus Lipton Community events
	Brockwell Bounce
	Foster children superheroes picnic
	Lambeth Country Show
	Ebony Horse Club Community event
	Surrey Cricket Club summer event
	Lambeth Festival of Apprenticeships
	Mawbey Brough and Myatt's Fields estate events
	Refugee and asylum-seeking children hotel visits and event
Easy read survey for young people with SEN	Art4Space consultations
	YOS consultations
Art and photography	Under 4s photography activity
	The Brixton Project commissioned art workshops and CFL mural in central Brixton



Appendix 2: Other youth consultations that fed into CFL's consultations

Other youth consultations that fed into CFL's consultations
WeRise: 'Getting ready for the new world of work' consultation
Violence Against Women and Girls consultations, 2021 – 2022
Under 5s photo consultation activity
The Brixton Project commissioned art workshops and CFL mural in central Brixton
SAFE Taskforce consultations
Art4Space easy read SEN consultations
HealthWatch focus group
Housing Needs analysis
Youth and Play Provisions questionnaire
Young people's feedback on CPB
Lambeth Youth Voice report 2020
Lambeth Mental Health Needs Assessment
Food Poverty Action Plan
SEND Strategy with young people's views
Lambeth SAFE SNA
Climate change consultations
King's research on mental health post-covid
Lambeth Youth Council discussion on climate change
Children and Young People Mental Health JSNA





Appendix 3: Useful links

[CFL website](#)

[Full suite of consultation resources on CFL website](#)

[Child Friendly Lambeth launch video](#)

[Child Friendly Lambeth Windrush Square Event video](#)

[Child Friendly Lambeth Consultation Results video, 2022](#)

[UNICEF UK Child Friendly Communities UK website](#)

[The United Nations Convention on the Rights of the Child](#)

[Lambeth Council demographic data](#)

[Lambeth Council equalities insight](#)

Appendix 4: Selection of CFL partner logos (non-exhaustive list)

