

# LAMBETH FUTURE FIT SCHOOLS



LAMBETH'S  
**CLIMATE<sup>o</sup>  
ACTION  
PLAN**

Tackling the climate and  
ecological emergency together



Lambeth

# Lambeth Future Fit Schools

**Lambeth's Future Fit Schools network is a local network to empower schools to play their part in reducing carbon emissions and protecting against climate risks in Lambeth.**

This resource pack has been developed to help you get started on the journey to becoming "Future Fit". It covers nine action areas your school can focus on including suggested actions to reach your goals, local and national projects to get involved in and case studies featuring schools in Lambeth.

The action areas align with Lambeth's Climate Action Plan – a roadmap for the borough to reduce greenhouse gas emissions and protect against climate risks by 2030.

**By taking part in the network, your school will benefit from:**

- Tailored resources and support for climate action.
- Peer to peer learning from local schools on best practice.
- Access to industry experts on sustainability through a series of workshops.
- Recognition as a Future Fit School taking action on the climate crisis.
- A series of action-focussed "meet-ups" or workshops.

**As part of Lambeth's Future Fit Schools network, schools pledge to:**

- Set at least three climate goals
- Develop a Climate Action Plan to reach your goals
- Get involved in the Future Fit Schools Network

**Look out for the icons below to help you with each commitment:**



**FACTS**

about each action area



**ACTIONS**

to help you reach your climate goals



**LINKS**

to more information

# Get involved

**Many schools in Lambeth are already taking action to go greener and others are looking for a place to start.**

**Wherever your school is along the journey to becoming “future fit”, we encourage you to follow these five steps.**



## 1. Sign up to become Future Fit

Fill out our [online form](#) declaring your commitment to becoming a Future Fit School. Once signed up, we encourage you to share your commitment with your school network.

## 2. Set goals

The aim is for schools to set at least three goals per year using the nine action areas in this resource pack as a guide. Every school is different, and these should align with your schools' priorities and needs.

## 3. Develop a Climate Action Plan

Your Climate Action Plan will be a strategy which sets out how your school plans to reach your new climate goals. There are excellent tools to support schools such as [Transform our World's Climate Action Planner](#) or [Friends of the Earth's Climate Action Plan for schools](#). You could also work with other organisations to support you such as [Eco Schools](#) or [Let's Go Zero 2030](#).

## 4. Ensure commitment to the plan

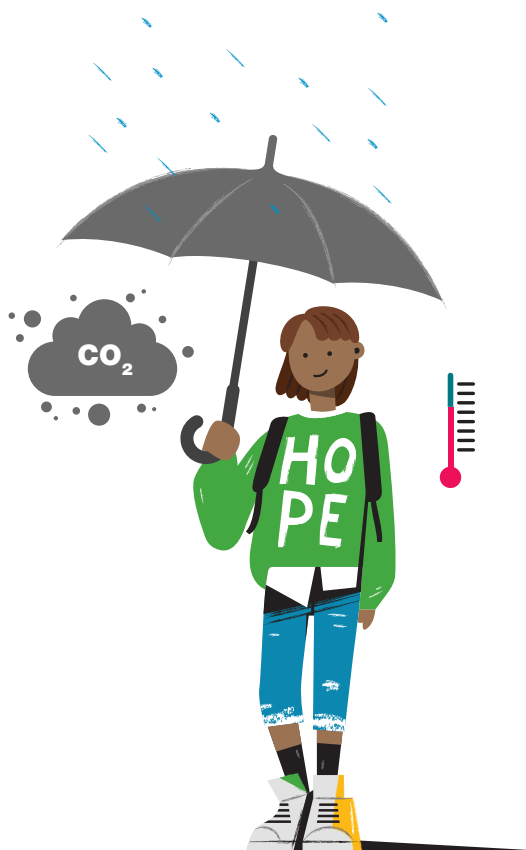
To embed your Climate Action Plan and goals into school life you could set up a working group such as a committee or climate group made up of leadership, teachers and students. Building the plan into your school's curriculum and decision-making is crucial to success.

## 5. Take part in the Future Fit Schools network

Take part in conversations, join workshops, and share your learnings with the Future Fit Schools network. Check out [our page](#) to see upcoming Network events.

# Future Fit School action areas

The nine Future Fit School areas for action align with Lambeth's Climate Action Plan's five themes: Adaptation, buildings, transport, consumption, and nature.



## ADAPTATION

1. Climate education
2. Extreme weather



## BUILDINGS AND ENERGY

3. Saving energy and money



## TRANSPORT

4. Green and active travel



## FOOD, WASTE AND CONSUMPTION

5. Reducing waste
6. Eating better for people and the planet
7. Sustainable purchasing



## BIODIVERSITY AND AIR QUALITY

8. Supporting nature
9. Improving air quality

# ADAPTATION

## 1. Climate education

Climate education means embedding sustainability into the curriculum and into wider school activities. Help your school community understand and address the impacts of the climate crisis and create well-informed change-makers.

### FACTS

- Climate anxiety among children and young people has reached record levels according to analysis from the Lancet.
- Empowering students to be part of the solution can help them to feel positive about their future.
- Caring for the planet at a young age lays the foundation for behaviours as adults.
- Climate justice means addressing the climate crisis whilst also making progress towards a fairer future for everyone.

### ACTIONS

- Include environmental themes across the curriculum such as the water cycle and global heating in science, upcycling and repair workshops in design and technology and climate justice in citizenship.
- Encourage ownership of environmental action among staff through a code of conduct, job descriptions and performance reviews.
- Create green champions through “Eco-Warriors” clubs, and support climate campaigners such as SOS-UK or the UK Student Climate Network.
- Encourage learning outdoors through a Forest School in one of Lambeth’s green spaces.
- Host themed action days such as a mock COP-27 or a citizens’ assembly inviting external speakers from the council or local groups.

### LINKS

[Teach the Future](#) – national campaigning organisation  
[Climate Ed](#) – local group hosting fun and interactive workshops  
[Climate Action Lambeth](#) – educational resources about the climate crisis in Lambeth  
[Transform our World](#) – learning resources and events  
[UN Sustainable Development Goals](#)  
[Jargon buster](#) – simple explanations for climate terms



Loughborough Primary School Climate Ed workshop

### CASE STUDY:

#### Climate Ed in Loughborough Primary

Climate Ed is a South London-based charity which teaches children in primary schools about climate change and empowers them to take action. Volunteers go into schools making climate change education fun through a series of workshops including activities and games.

*“Climate education is very important for our children as they focus on current concerns that exist in the world. The children become educators themselves and potentially ambassadors for positive change for our environment,”*

Loughborough Primary School.

# **ADAPTATION** continued

## 2. Extreme weather

Climate change will lead to more extreme weather such as hotter summers and more intense rainfall. Learn about the risks to your school and how you can help prepare school communities for extreme weather events.

### **FACTS**

- Lambeth is the fifth most densely populated borough in the UK, facing increased exposure to heatwaves and flooding.
- Paved surfaces such as playgrounds can increase heat and flood risks.
- Those least to blame for the climate crisis are often the most affected by extreme weather events.
- Planting trees or creating rain gardens help reduce heat and flood risks and offer other environmental and social benefits.
- Research by the Met Office and Environment Agency shows Lambeth will see a 40% rise in storm intensity by 2100, which means more frequent and severe storms and surface water flooding.

### **ACTIONS**

- Twin with a school from an area highly affected by the climate crisis and learn about how schools and young people are adapting.
- Find out your school's flood risk using the government database and work with site managers to identify flood risk reduction measures.
- Reduce flood risk with measures that absorb water such as natural rain gardens, and wildflower planters.
- Save water through fun and educational awareness-raising activities or water harvesting tanks.

### **LINKS**

[Energy Savings Trust](#) – tips on saving water

[The Wildlife Trust](#) – guide to managing rainwater

[Mayor of London's School advice](#) – tips on adapting to climate change

[Water Safe](#) – facts and tips to save water



Turney School SuDS Planter

### **CASE STUDY:**

#### **Play and Planters at Turney School**

Lambeth Council worked with SuDSPlanter to build Sustainable Drainage Systems (SuDs) in schools across Lambeth. The installations capture rainwater from roofs into planters instead of drains. The planters filter and clean the water whilst feeding plants. During the installation, children learned about the water cycle and the important role of plants.





# BUILDINGS AND ENERGY

## 3. Saving energy and money

Raise awareness about different sources of energy and how reducing our consumption and improving the efficiency of our buildings can help reduce emissions.

### FACTS

- Emissions from powering our buildings are the largest source of greenhouse gas emissions in Lambeth at over 40%.
- Reducing energy usage from fossil fuels will result in cleaner, safer air and reduce energy bills.
- Changes in behaviour can lead to significant cost savings on energy use.
- Energy usage and bills in schools are a large proportion of annual expenditure. Improving energy efficiency and installing low carbon heating can save thousands of pounds per year on school energy bills.

### LINKS

[Lambeth Council](#) – energy saving tips  
[Solar for Schools](#) – hands-on education using solar panels on schools  
[Hopes Sustainability](#) – support to install light sensors  
[Energy Sparks](#) – online, school-specific energy analysis tool and education programme

### ACTIONS

- Conduct an energy audit to understand where savings can be made. For information about support from the council, email [sustainability@lambeth.gov.uk](mailto:sustainability@lambeth.gov.uk).
- Promote awareness among students and teachers about reducing energy such as switching off monitors, labelling appliances or working with local organisations such as SE24 or Repowering.
- Register your interest with [sustainability@lambeth.gov.uk](mailto:sustainability@lambeth.gov.uk) to install energy saving measures including LED lighting, insulation, renewable energy measures like solar PV, and low carbon heating options like an air source heat pump.
- Keep your energy bills on file and share your consumption data with Lambeth Council to enable comprehensive emissions reporting.
- When choosing your energy supplier, consider a renewable energy tariff. Make sure you read the small print to ensure your tariff is truly green. Advice is available through the Energy Savings Trust.



Solar Panels on Heathbrook Primary

### CASE STUDY:

#### Reducing emissions at Heathbrook Primary

In 2021 and 2022, Lambeth Council worked with schools to invest over £7m of central government and council grant to reduce emissions from schools. At Heathbrook Primary School, an air source heat pump, LED lights and solar panels were installed. The installations are expected to reduce their annual carbon footprint by 43% and save £14,457 per annum on fuel bills.

*“Wow – brand new solar panels and an air source heat pump! Lambeth Council is helping us prepare our school for a low-carbon future,”*

Heathbrook Primary School.

## 4. Green and active travel

Promote green and active ways to travel to school including cycling, walking, scooting, jogging, car-pooling and public transport.

### **FACTS**

- Emissions from transport make up almost a quarter of Lambeth's total emissions, mostly from motor vehicles.
- Reducing the number of cars on our roads will reduce congestion and traffic accidents and improve our air quality.
- School drop-offs accounts for around 30% of morning traffic, even though the average journey to school is less than a 10-minute walk.
- Increased physical activity will improve students' physical and mental wellbeing.

### **ACTIONS**

- Support parents, students and teachers to participate in walk to school schemes such as a Living Streets Walk to School initiatives.
- Encourage cycling through training with Lambeth's free cycle training sessions, joining the Rent a Bike scheme and raising awareness through student travel ambassadors.
- Work with Lambeth Council's Active Travel team on schemes such as School Streets, walking buses, park and strides and more. Contact [activetravel@lambeth.gov.uk](mailto:activetravel@lambeth.gov.uk) for more information.
- Register for TfL's STARS scheme which inspires young people to travel sustainably to school and aim to become a gold STARS accredited school.
- Apply for an active travel grant to fund bike and scooter libraries including bike pools for staff or trikes for early years using Try Before you Bike.
- Promote car-sharing options among parents and staff.

### **LINKS**

**STARS** – accreditation scheme, supporting active and sustainable travel in London's schools and nurseries

**Try Before you Bike** – trialling a bike affordably

**Cycle Confident** and **Bikeability** – school cycle training

**Living Streets** – school resources for active travel

**Cross River Partnership** – local organisation supporting active travel



### **CASE STUDY:**

#### **Lambeth School Streets**

Much of the poor air quality surrounding schools is caused by private vehicles. Private vehicles also pose a road safety threat to children who walk, cycle and scoot to school. Lambeth Council is rolling out School Streets to help reduce these risks by restricting vehicle access during school pick-ups and drop-offs. Between 2019 and 2022, 25 schools have had School Streets put in place.

*“Our school community has reaped the benefits of the School Street and we are delighted,”*

Van Gogh Primary School.





# FOOD, WASTE & CONSUMPTION

## 5. Reducing waste

Reducing waste means rethinking the things we buy and using the “waste hierarchy” of Reduce – Reuse – Recycle to make sure items last longer and stay out of landfill.

### FACTS

- Creating waste contributes to emissions through the energy used in producing materials and the gases generated from materials decomposing in landfills.
- School waste is up to 80% recyclable, so lots can be done with school materials which cannot be used.
- Statistics show that 7.7 billion plastic water bottles are used in the UK every year.
- Over 100,000 marine animals die every year from digesting or getting entangled in plastic.

### LINKS

[Trifocal project](#) – campaign resources to help schools and communities to cut food waste and recycle more  
[Reschool](#) – a platform to advertise rental of equipment  
[Recycle more](#) – tips to increase recycling  
[Pupils Profit](#) – a school-based ECO Refill Shop that empowers children to reduce plastic waste

### ACTIONS

- Set up a library of things or second-hand sales and swaps to help students borrow and share popular items such as books, clothes, and school uniforms.
- Run Design Technology fixing clubs and upcycling projects in collaboration with organisations such as the Remakery or local alternations businesses to encourage repair.
- Encourage the use of re-usable water bottles, keep cups and plastic-free snacks with support from campaigns such as Refill Brixton.
- Ensure your school is recycling and composting with help from Lambeth Council.
- Make recycling fun and simple by clearly labelling bins, raising awareness through action days or events such as one hosted by Western Riverside Waste Authority (WRWA)
- Host an e-waste drop-off spot for phones and tablets to get refurbished with organisations such as Community Tech Aid.



Western Riverside Waste Authority Lessons

### CASE STUDY:

#### Ashmole Primary visit WRWA

The Western Riverside Waste Authority (WRWA) organise school visits to the Wandsworth waste centre, where Lambeth’s waste ends up. They deliver free curriculum workshops, assemblies and waste audits in schools. Ashmole Primary visited the site and learned about the waste hierarchy and actions to take to reduce our impact from waste.

*“The children learned a lot from you about recycling and really enjoyed making their Michael Recycle superheroes,”*

Christ Church Primary.



# FOOD, WASTE & CONSUMPTION continued

## 6. Eating better for people and the planet

Teach students about the benefits of eating less meat and offer plant-based options with local and sustainable ingredients.

### FACTS

- Food production is responsible for one quarter of the world's greenhouse gas emissions.
- In the UK, we throw away 6.6m tonnes of household food waste and three quarters of this could have been eaten, wasting an average of £700 a year per family.
- 65% of all food and drink emissions in Lambeth comes from the consumption of meat and dairy. Eating less meat also has health benefits, such as reducing the risk of certain cancers and heart disease.
- Planet-friendly meals include ingredients that are locally sourced or have other sustainable certifications such as organic, fairtrade, MSC-certified fish, soil association or the Rainforest Alliance.

### ACTIONS

- Provide more “planet-friendly” meals and snacks or introduce “Meat-free Mondays” in the school canteen. Raise awareness of the benefits to health using educational resources such as from Veganuary.
- Become a member of Incredible Edible Lambeth Schools programme to grow food in your school for both cooking and educational purposes.
- Work with local organisations to share food waste such as Brixton People's Kitchen or Be Enriched.
- Build composting sites using guidance from the Royal Horticultural Society.
- Engagement with Future Fit Schools supports applications for the Healthy Schools London (HSL) award. Use your chosen climate goals to support environmental and active travel HSL silver and gold awards.

### LINKS

[Incredible Edible Lambeth Schools, Sprout Up Schools](#) and the [South London Botanical Institute](#) – gardening and growing projects in Lambeth

[Love food hate waste](#) – educational resources and tips on reducing food waste

[School food matters](#) – educational organisation improving children's access to healthy, sustainable food

[Angry Monk](#) – if you're organising a school catering event, consider getting surplus ingredients from Angry Monk



Jubilee Primary garden

### CASE STUDY:

#### **Sprout Up Schools Jubilee Primary**

Winners of Best School Garden in Blooming Lambeth Awards 2019, Jubilee Primary worked with Sprout Up Schools and Incredible Edible to build a garden run by the gardening club and “gardening champions”. The garden is used to produce food for cooking lessons and promoting healthy eating.

*“I'd like to grow my own sweet potato and make my own fries,”*

*Lambeth Youth Council Member.*



# FOOD, WASTE & CONSUMPTION continued

## 7. Sustainable procurement

**Sustainable procurement means voting with the school purse and ensuring the services and materials you purchase consider social and environmental impacts.**

### **FACTS**

- Everything we buy as consumers has a carbon footprint. In Lambeth, the average footprint of a Lambeth resident is equivalent to roughly three return flights from London to Tokyo.
- Sustainable procurement is used to ensure that purchasing reflects broader goals linked to resource efficiency, climate change, social responsibility and economic resilience.
- Sustainable procurement requires a higher degree of collaboration and engagement between all parties in a supply chain.

### **ACTIONS**

- Purchase refurbished, second-hand and locally and sustainably sourced furniture, equipment and stationery.
- Ask contract bidders and suppliers to report on CO2 emissions from their vehicles, energy usage and materials and measures taken to reduce them.
- Require suppliers to set out how they are meeting other sustainability criteria such as resilience to extreme weather, improving biodiversity and air quality, reducing waste and increasing re-use, recycling and composting of materials.

***“We want corporate responsibility, not just individual responsibility,”***  
Lambeth Youth Council Member.

### **LINKS**

[The ethical consumer](#) – directory of ethical and sustainable suppliers  
[Department for Education](#) – top tips for sustainability in schools  
[Rype](#) – refurbished furniture and second hand stationery





# BIODIVERSITY AND AIR QUALITY

## 8. Supporting nature

**Increase access to nature and re-wilding spaces in schools to improve biodiversity, clean our air and support children and teachers' wellbeing.**

### **FACTS**

- Lambeth declared a 'climate ecological emergency' in 2019, recognizing the connected crises of global heating and the global decline in biodiversity.
- 70% of households in Lambeth live in flats with limited access to green space.
- Green spaces and trees not only absorb carbon, they also help keep us cool in hot weather, clean our air, support local wildlife, and absorb rainfall reducing flood risk.
- Research from the Soil Association links increased access to nature for children with higher attainment, physical fitness and self-confidence and lower rates of obesity and stress.

### **ACTIONS**

- Increase trees, shrubs and other plants on school premises through planting and growing projects such as with local groups like Friends of the Earth and Stockwell Partnership.
- Take children on visits to Lambeth's award-winning Parks or our designated nature reserves such as the Great North Wood.
- Make the school grounds more friendly to wildlife and pollinators by providing food and habitats such as birdbaths, feeders, mini-ponds and bug hotels using information from local organisations like Bee Urban.
- Teach children about wildlife using resources from the London Wildlife Trust and No Mow May.

### **LINKS**

Royal Horticultural Society resources on [setting up a school garden](#) and [greening your school](#)  
Go wild with support from local campaigner 'City Girl in Nature' or the [Wilderness Foundation](#)  
Get access to free trees through the [Queen's Green Canopy](#) initiative  
'Free trees for schools and communities' or [Trees for Cities](#)



### **CASE STUDY:**

#### **Mulberry Outdoor Pre-School**

Mulberry Outdoor Pre-School is an Urban Nature School which grows fruit and vegetables in Myatt's Fields Park. During "Stay and Play" sessions, parents and carers enjoy helping to water and look after produce. The planters were created by repurposing wood from the refurbished sandpit and children learned about having a minimal impact on the environment.

*"We have seen that by growing food at this foundation stage, it inspires young children to try new healthy foods for life,"*  
Incredible Edible Lambeth.





# BIODIVERSITY AND AIR QUALITY continued

## 9. Improving air quality

Encourage actions which reduce air pollution and install measures such as green screens which help filter air pollution and protect student health.

### FACTS

- Each year in Lambeth, air pollution kills over 100 residents and causes over 750 hospital admissions from lung and heart disease.
- Poor air quality disproportionately affects children, older people, people in poverty, those who have heart and lung problems and Black, Asian and multi-ethnic people.
- Air pollution in Lambeth comes from transport, construction sites and heat systems.
- 60% of children's daily pollution exposure comes from the playground and commute to school.
- Closing the roads around schools at drop-off times has shown to reduce pollution by over 20%.

### LINKS

[Mums for Lungs](#) – resources and help for schools to reduce air pollution  
[Global Action Plan's Clean Air Hub](#) – information on air pollution

### ACTIONS

- Increase greenery to absorb pollution by installing a “Green Screen” on your school premises. This can be done by your school or by registering your schools’ interest with Lambeth’s Sustainability Team at [sustainability@lambeth.gov.uk](mailto:sustainability@lambeth.gov.uk)
- Reduce pollution from transport by encouraging active travel using tips from the ‘Transport’ section or start an anti-idling campaign with Idling Action London.
- Encourage students and parents to take Lambeth Council’s #StopWoodBurning pledge.
- Switch to sustainable deliveries using cargo bikes such as the Peddle My Wheels Our Bike scheme and consolidate deliveries through Clean Air Villages.
- Host an assembly on air quality in Lambeth, email [sustainability@lambeth.gov.uk](mailto:sustainability@lambeth.gov.uk) for a presentation.



Trinity CofE Primary School

### CASE STUDY:

#### Green Screens

Lambeth Council has installed a number of “Green Screens” in various schools across Lambeth to reduce children’s exposure to air pollution. These Hedera Ivy screens capture and block particulate pollution, protecting students from traffic emissions from nearby roads. Teachers report how the installation of Green Screens in Lambeth’s schools have improved the children’s school experience and wellbeing.

*“We absolutely love them – they’re really lifting everyone’s spirits. As well as the difference they will make to the air quality, they give the children so much more privacy, and a much more enjoyable environment as well,”*  
Vauxhall Primary School.



# RESOURCES

## Department for Education's Climate Change and Sustainability

[Read the strategy here](#) and find out about the [National Education Park and Climate Leader's Award](#)

[Watch this video about the DfE's plans](#)

## Lambeth's Environmental groups

[Friends of the Earth Lambeth](#)  
[Climate Action in Lambeth](#)

## Learning resources from Lambeth:

[What is climate change?](#)

[What is Net Zero?](#)

[Air quality in Lambeth](#) and [how to reduce it for businesses](#)

[Guide to saving energy](#)

## Behaviour change support:

[Nine things you can do for your health and the planet](#) from Imperial College

## Support for schools:

[Eco Schools](#) is a charity passionate about engaging young people in environmental education and action. They provide a simple, seven-step framework that guides, empowers and motivates pupils to drive change and improve environmental

awareness in their school, local community and beyond. Themes includes the climate crisis, plastic pollution and biodiversity loss.

[Transform Our World](#) is a collaborative online hub that supports teachers in bringing environmental and social action into the classroom through showcasing quality-rated resources. It offers a free, easy-to-use digital tool – Climate Action Planner – to enable teachers, students and staff to identify actions they can take to reduce their school's environmental impact.

[Teach Sustainable Development Goals](#) connects global educators dedicated to responding to a call to action within education to meet the Sustainable Development Goals. They point to open and accessible resources, lesson plans, and global projects directly aligned to the Sustainable Development Goals.

[Green Schools Project's](#) mission is to enable young people to fulfil their potential by providing resources and support to schools to engage them in environmental projects, building their skills and aspirations while encouraging them, their community and wider society to live in a more sustainable way.

## Let's Go Zero 2030

[Let's Go Zero](#) is a national campaign uniting teachers, pupils, parents and their schools as they all work together to be zero carbon by 2030. When schools sign up to Let's Go Zero, they get support on setting zero carbon targets and developing roadmaps for delivery.

