

# CLIMATE<sup>o</sup> ACTION PLAN

Tackling the climate and  
ecological emergency together

## CLEAN AND SAFE AIR FOR LAMBETH

Wood burning  
awareness and  
prevention factsheet



### **Burning wood in the home is a major source of local air pollution**

Wood burning in homes is responsible for 16% of emissions of toxic air pollution particle (called “PM<sub>2.5</sub>”) in Lambeth.<sup>1</sup>

That’s more than all PM<sub>2.5</sub> released by petrol and diesel cars in the borough. Even so-called “ecostoves” can emit 750 times more pollution than an HGV.<sup>2</sup>

### **Pollution from wood burning is harmful to health**

Burning wood and coal emits very small particles of pollution, called PM<sub>2.5</sub>. Because these particles are so small, they can penetrate the lung barrier and enter the blood system, making them particularly harmful.<sup>3</sup>

Exposure to PM<sub>2.5</sub> is linked to cancer, heart disease, stroke and asthma and impacts society’s most vulnerable residents including the very young, elderly and those with existing health conditions.<sup>4</sup>



## Wood burning exposes you and your family to air pollution

Research has found that wood burning in the home triples the levels of fine particle pollution inside, with PM<sub>2.5</sub> pollution “flooding” into indoor areas through normal use of wood stoves.<sup>5</sup>

## Let's tackle wood burning together

Less than one in 10 households in London burn wood for fuel<sup>6</sup>. The best way to reduce air pollution and protect health is simply to avoid burning wood, coal or other solid fuels at home.

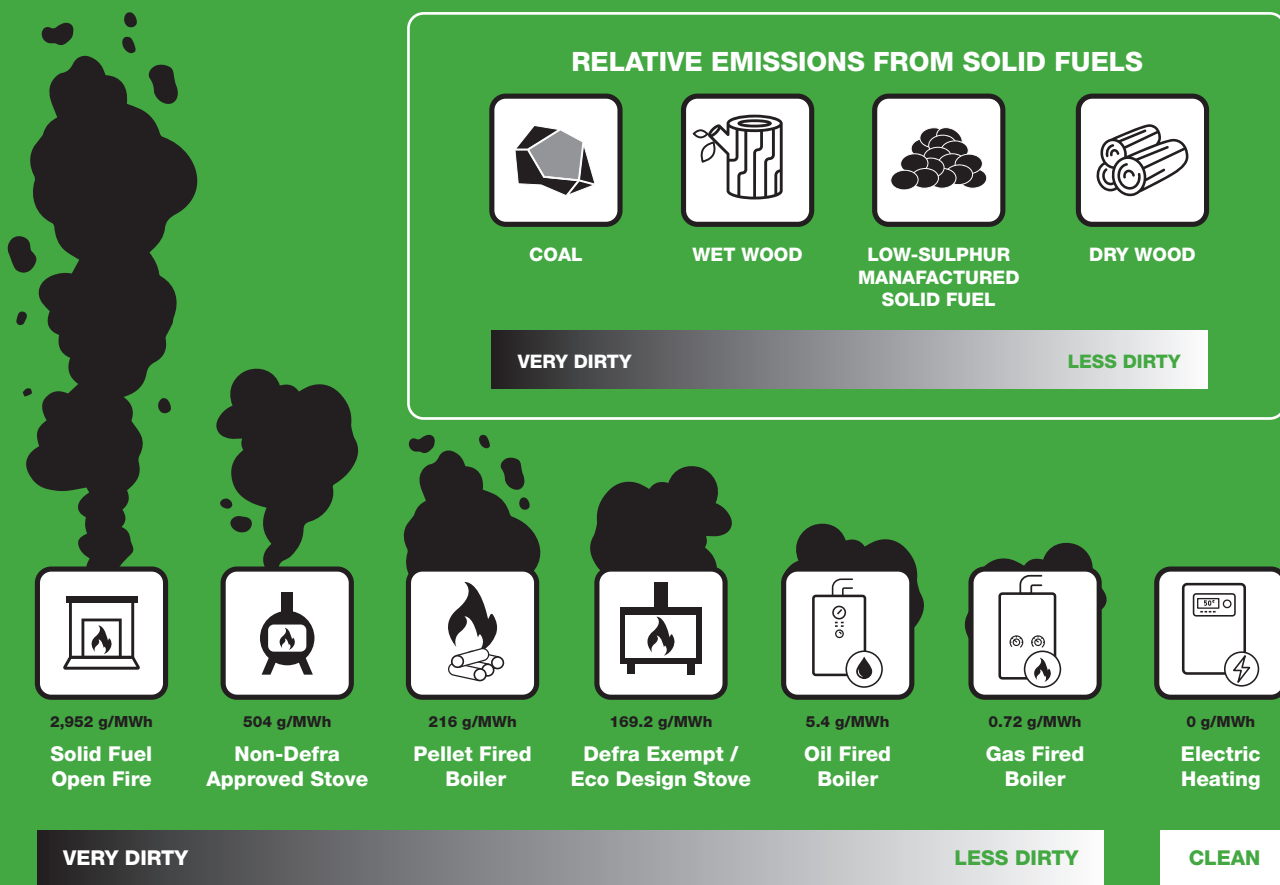
## Concerns about energy costs

We understand that rising energy costs are concerning for everyone at the moment. However, wood burning is very inefficient and the costs can be significant including the woodstove itself, the installation costs and buying wood.

Please see Lambeth's cost of living pages for advice and support

<https://beta.lambeth.gov.uk/costliving-crisis-support>

## Relative PM<sub>2.5</sub> emissions in your home from domestic heating methods



<sup>1</sup> <https://data.london.gov.uk/dataset/london-atmospheric-emissions-inventory--laei--2019>

<sup>2</sup> <https://www.theguardian.com/environment/2021/oct/09/eco-wood-stoves-emit-pollution-hgv-ecodesign>

<sup>3</sup> <https://www.mdpi.com/2073-4433/11/12/1326>

<sup>4</sup> [https://www.who.int/news-room/fact-sheets/detail/ambient-\(outdoor\)-air-quality-and-health](https://www.who.int/news-room/fact-sheets/detail/ambient-(outdoor)-air-quality-and-health)

<sup>5</sup> <https://www.mdpi.com/2073-4433/11/12/1326>

<sup>6</sup> <https://www.londonair.org.uk/londonair/guide/WoodBurning.aspx>