

Lambethtalk

YOUR FREE LAMBETH COUNCIL MAGAZINE

CHILDREN & YOUNG PEOPLE 2023



FOOD & FUN

Summer activities / p5-7

MY FIRST VOTE

Introduction to elections /
p14-15

ACTIVE LAMBETH

During holidays / p11-14

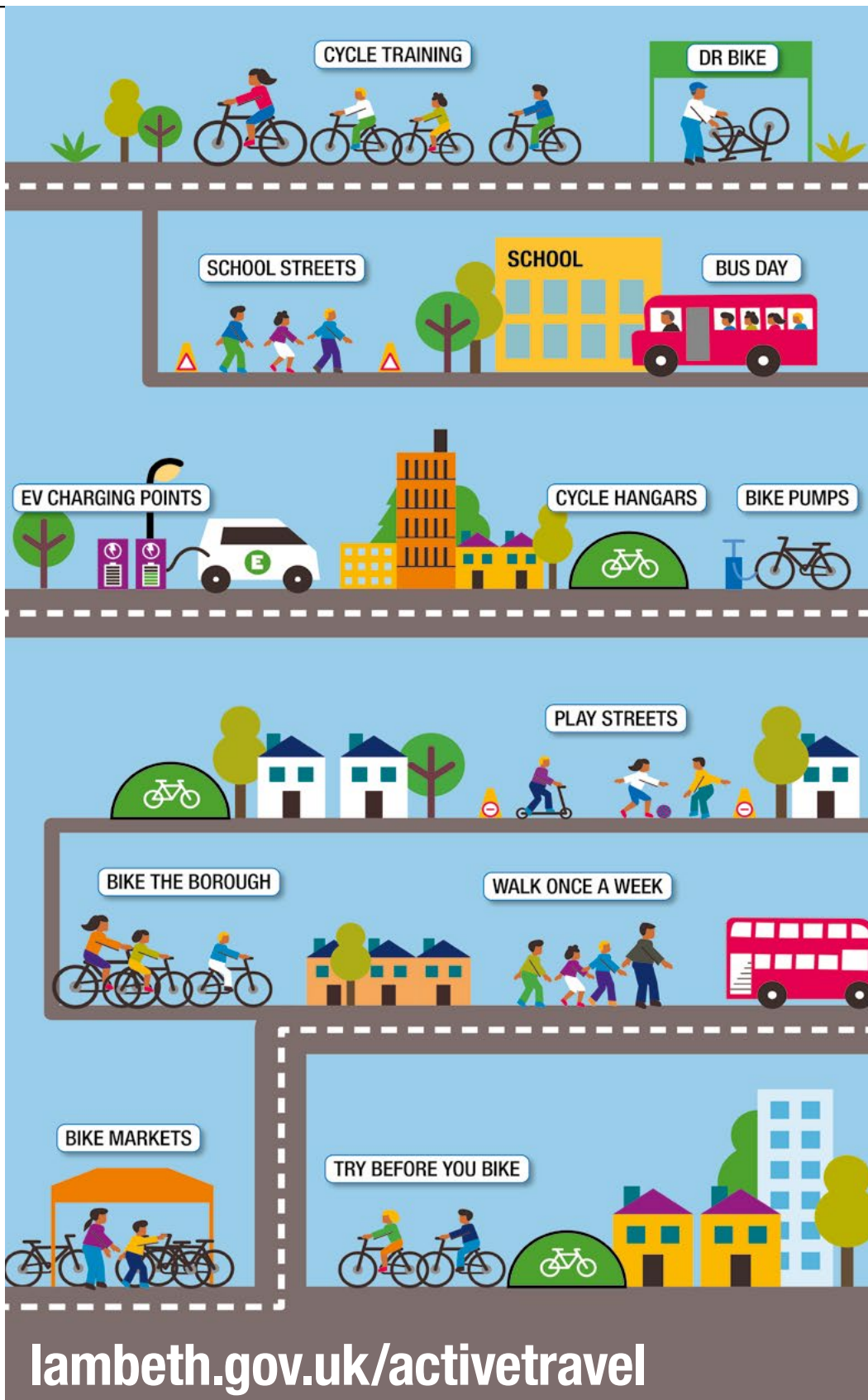
YOUNG PEOPLE

Free events programme /
p23



Lambeth

ACTIVE TRAVEL TEAM SERVICES





Welcome

Dear residents,

This summer, Lambeth Council is continuing to support our residents and communities through these tough times, especially our children and young people.

In this edition of Lambeth Talk, you can read all about our summer of food and fun, centred round our commitment to providing funding for holiday clubs, with over 40,000 free spaces available for children and young people who receive benefits-related free school meals.

Not only do these clubs and activities give parents and guardians a substitute to child care, they also provide healthy meals and snacks for all eligible children and young people.

Active Lambeth will also be running a summer holiday programme at venues across the borough, including a new Family Leisure Zone at Brixton Rec.

Cllr Claire Holland, Leader of Lambeth Council

in this issue...



SUMMER FOOD & FUN p8-10

For translation of articles in any other language, large print format, or to opt-out from receiving the magazine contact: lambethtalk@lambeth.gov.uk

Edited and designed by the Lambeth Communications team. Contact us: communications@lambeth.gov.uk



NEWS p4



MY FIRST VOTE p14-15



COST OF LIVING p20-21



MEET THE CABINET p5-7



EARLY YEARS p16-17



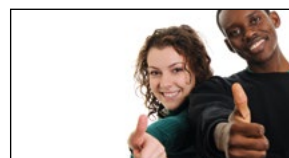
FESTIVALS & EVENTS p22



ACTIVE LAMBETH p12-13



FAMILY HUB p19



YOUNG PEOPLE p23

NEWS

Boosting local neighbourhoods with healthier streets

A new £1.4million Health Route will make local transport safer, more accessible and pleasant for people who are walking, cycling, wheeling and using the bus.

Work has begun on the flagship Health Route along Loughborough Road, between Ridgway Road and Fiveways Junction.

Through traffic has been reported as problem with up to 800 vehicle journeys an hour at peak times, while surrounding streets are in the 20 per cent for Nitrogen Dioxide and particle matter pollution across the capital.

Cllr Rezina Chowdhury, Lambeth's Deputy Leader, said: "We want to bring fairness to our neighbourhoods, reducing high air pollution which impacts most of those with least, help people embrace the opportunity to be healthier by walking or cycling and ensure they can make the trips they need to by better supporting local bus services."



LAMBETH SUPPORTS COMMUNITY

Lambeth Council has supported local organisations with £1million in grants using 'developer tax' through its Community Connections Fund.



The Community Connections Fund uses money raised by taxes levied on private developers to support local initiatives that have a real impact on peoples' everyday lives.

The 13 organisations have been awarded first round funding to support initiatives ranging from new community and play space to projects that encourage grassroots climate activism as well as intergenerational storytelling with Lambeth's diaspora communities.

Cllr Danny Adilypour, cabinet member for Sustainable Growth and New Homes, said: "I am delighted we have been able to use money collected from development in borough to support such diverse and important projects."

Bring what's broken to Lambeth's Repair Café

The Repair Café Lambeth is a meeting place where volunteer fixers mend broken items for neighbours for free. The volunteers don't just mend things, but focus on sharing skills and promoting communication, co-operation and community spirit. The Repair Café Lambeth opens the first Saturday of each month 10am – 1pm at We Are 336 – but aims to benefit everyone and plans to run events in locations across Lambeth. Feel free to visit the website where you can find out more about the bus and see the schedule Lambeth's Health and Wellbeing Bus – Lambeth Together. And the Twitter page to stay up to date and find out more about Lambeth Together and the Health & Wellbeing Bus Lambeth Together (@LambethTogether) / Twitter

Lambeth leads the way on national Blue Badge Action Day

Lambeth Council worked with local authorities across the country as part of Blue Badge Action Day to target stolen and fraudulently used Blue Badges.

A Blue Badge helps people with real health needs – including hidden disabilities such as mental health conditions – to park and get on with their daily lives.

But drivers misusing Blue Badges are committing a criminal offence

punishable by up to £1000 fine. Stolen or counterfeit blue badge users can also be prosecuted under the Fraud Act 2006, which can lead to up to 12 years' prison and unlimited fines.



Last year's first Blue Badge Action Day saw Lambeth work with 19 London boroughs. For 2023, 82 Councils across England were involved. This year there were 26 fraudulently used badges identified in Lambeth, which included four stolen badges, three lost badges and four badges which had been cancelled due to the holder being deceased.

Cllr Rezina Chowdhury, Cabinet Member for Sustainable Lambeth and Clean Air, said:



We have acted because parking fraud and the abuse of parking services costs local authorities significant amounts of money to deal with every year, funding that could be better spent on providing essential services to our residents. ”

HEALTHY LIVING PLATFORM, LIVING WAGE EMPLOYERS

Healthy Living Platform want to see whole neighbourhoods with all the tools they need for healthy eating. All their staff are paid the London Living Wage. Healthy Living Platform is a Lambeth-based charity supporting communities on food projects since it began supporting activities in 2018. They have also now become an accredited Living Wage Employer. Lambeth Council is on a journey to make Lambeth a Living Wage Place, using a place-based approach to support families, communities and our local economy by uplifting low-paid workers to the real Living Wage. With 75% of Living Wage accredited businesses reporting improved motivation and retention rates, the benefits of paying London Living Wage are clear.



CHILDREN AND YOUNG PEOPLE

Meet the cabinet



“

I want to make sure the voices of children and young people are heard at the council, especially when big decisions are being made.”

Cllr Ben Kind

What are you excited about this summer?

There are so many activities for children of all ages, and hopefully we have catered for every interest. We have our Summer of Food and Fun, our Libraries programme, Active Lambeth activities, our Lambeth Made programme. There's lots going on and my children will be taking part in some of the activities.

How would you describe your role as a Councillor responsible for Children and Families?

My family fostered for my whole childhood and my mother was a Social Worker. I've had first-hand experience of how children and young people should be at the heart of decision making, and how essential it is that our services run smoothly. I'm really committed to making sure services the council

offers children and young people are the best they can be, giving them the chance to learn and grow in the best environment for them.

I have an overview of what happens and make sure we are accountable to the children and young people living in Lambeth.

What is the council doing to address the challenges faced by children and young people?

This year Lambeth released its borough plan: Lambeth 2030. Over the next 7 years, we will work together to make Lambeth the best it can be.

A big part of this plan is to deliver an ambitious future for everybody and make Lambeth an incredible place to grow up. Children and Young people are at the heart of Lambeth's plans, which is also why we have been embarking on an ambitious three-to-five-year programme to be recognised

as a UNICEF UK Child Friendly Community. We became one of the first councils in London to treat care experience as a protected characteristic.

We have also permanently expanded free school meal eligibility including support during the school holidays as part of our cost-of-living support. Speak to your school if you think your family is eligible. We are also offering extra free childcare for low-income families with young children.

So there is lots going on, but if you want to get involved and have your say on our borough plan, as a child or young person please go to: surveymonkey.co.uk/r/Lambeth2030YP and fill in our survey!



Cllr Ben Kind and Cllr Dr Mahamed Hashi discuss their work, their vision and the challenges they face as cabinet members for children, families and young people.



“I want to make sure that everyone in Lambeth feels safe.”

Cllr Dr Mahamad Hashi

What are you excited about this summer?

I'm excited for the Summer of Food and Fun programme, which will offer over 40,000 free places at 60+ holiday clubs across the borough. There will also be trips and residential programmes as well as healthy meals for anyone participating.

We also have our Lambeth Summer Violence Programme, which will be delivered for the third consecutive year. It's aimed at 16–25-year-olds in Lambeth and will provide a range of interventions and activities to deter or divert young people away from risk-taking and anti-social behaviours.

How would you describe your role as a Councillor responsible for Safer Communities?

As well as a councillor, I've been a youth and community worker for over 20 years and have set up

numerous community projects including the Brixton soup kitchen and New Beginnings which carried out gang intervention programmes on several estates in Stockwell.

As a part of my role, I work closely with the Police, local residents, charities and other organisations in Lambeth that focus on safety and violence. I have a lot of experience helping children and young people finding the best path, as well as pushing back on unjust practices.

Lambeth 2030, our new Borough Plan, has committed Lambeth to making safety in our community one of our major concerns. I'm looking forward to achieving it!

What is the council doing to address the challenges faced by children, young people and those who feel unsafe?

This year we started a new campaign to keep women safe from harassment and to tackle

offending. We are set to establish 40 safe havens at businesses in known harassment hotspots where women and other vulnerable people can access safety and support when in need at night-time. Licensed premises and other businesses in both boroughs will get specialist training with the Safer Business Partnership, a crime reduction agency.

There is much more coming up as part of our planning for the Borough Plan as part of our work, including a new youth strategy. We will continue to work closely with the police, to make sure they do what is best for our communities. We also hope to revitalise our youth centres and we will be leading a new partnership with six other South London boroughs to tackle domestic abuse perpetrator, having successfully secured almost £2million in funding for the project.

SUMMER ACTIVITIES



**Activities for children and young people
24 July to 1 September 2023**

www.lambeth.gov.uk/summer


Lambeth

Lambeth's Summer of Food and Fun 2023 runs from Monday 24 July until Friday 1 September and it's shaping up to be a summer to remember!

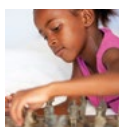
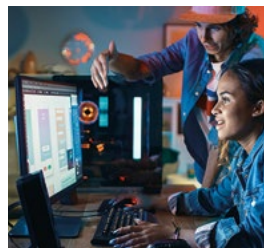


Lambeth are funding 60+ holiday clubs running across the borough and over 40,000 free places will be available for children and young people who receive benefits-related free school meals.

There's an array of exciting activities on offer and Lambeth Council are putting an extra £80,000 towards funding a variety of day trips and residential programmes. There will be trips to the seaside, cinema, Flip Out, bowling, water parks and a whole lot more!

All eligible children and young people attending these clubs will receive a healthy, tasty meal and there will be lots of fresh fruit on offer for snacks.

During the school holidays over Easter, Lambeth's Spring of Food and Fun funded 52 holiday clubs located across the borough and provided free places for 11,000+ eligible children and young people. Over 14,000 healthy meals were served, and a wide range of activities were on offer including drama, multi sports, art and others!



“All of us at Lambeth Council are excited to deliver our Summer of Food and Fun programme for a third year, part of the Holiday Activities and Food programme, funded by the Department for Education.

Across this year's spring, summer, and winter school holidays, £1.3 million is being invested in providing free healthy food and enriching activities for children and young people aged 4-16. The programme is targeted at those receiving benefit-related free school meals, with places available for children living in households with a lower income. We encourage everyone to get involved, try out new experiences, learn new things and celebrate summer”

Councillor Dr. Mahamed Hashi
Cabinet member for Safer Communities

“We want Lambeth to be the best place for children and young people to grow up. Given the cost of living crisis, the council is determined to offer a programme that helps support families and looks after all aspects of children's wellbeing.

Through our Summer of Food and Fun the council will be funding in the region of 40,000 free places in over 60+ locations across Lambeth. It will offer a wide range of diverse activities for children to get involved in while also providing healthy meals and snacks for all our children.”

Councillor Ben Kind, Cabinet member for Children and Families

SUMMER ACTIVITIES

Brixton

198 Contemporary Arts and Learning, 198 Railton Road SE24 0JT

Allstars Activity Club Ltd
Deronda Community Centre
5 Jarrett Close Tulse Hill,
SW2 3DG

Angell Delight, Unit b Fairfax
House Overton Road SW9 7JR

BIGKID Foundation Dexter Rd
APG 6 Montego Close SE24 0LH

Brixton Community Based
St Vincents Brixton Talma Road
SW2 1AS

Topcats, Brixton Recreational
Centre Station Road SW9 8QQ

Brixton Wings, Unit 4 Fairfax
House Overton Road London
SW9 7JR

CEF Lynx, Windmill Gardens
(Park) Blenheim Gardens
SW2 5DA

Fulham FC Foundation, Ferndale
Sports Centre SW9 8BP

**High Trees Community
Development Trust**
Tulse Hill Adventure Playground
Tulse Hill Estate SW2 2EY

Kinetika Bloco, Holy Trinity
Primary School SW2 2RL

Lerato Community Initiative
Mursell Community Hall Portland
Grove Stockwell SW8 1JB

Lilford Area Residents Association
46 Lilford House SE5 9QD

Loughborough Community Centre
Max Roach One O Clock Club
Wilshire Road SW9 7NE

**Loughborough Junction Action
Group**, Grove APG 18 Gordon
Grove SE5 9DT

ML Community Enterprise Ltd
Marcus Lipton Centre Minet Road
SW9 7UH

Parallel Youth Enterprise
St Martins in the Field School
155 Tulse Hill SW2 3UP

Pinnacle Group, Myatts Field
North Community Centre,
1 Eythorne Road London SW9 6FZ

**Slade Gardens Community Play
Association CIO**, Slade Gardens
Adventure Playground 73 A&B
Stockwell Park Road SW9 0DA

St Matthew's Project, Tulse Hill
Estate SW2

Whippersnappers, Brockwell
Lido SE24 0PA

Streatham

A2ndVoice CIC, 39 Sunnyside
Road SW16 2UG

Our Parks, Julian's Primary
School 226 Leigham Court Road
SW16 2RB

**Streatham Youth and
Community Trust**, Conyers Road
SW16 6LS

**Streatham Youth and
Community Trust** (2 clubs)
The Hut Streatham Vale Park
SW16 5AL

UINCAP, 136 Streatham High
Road SW16 1BW

North Lambeth

**Bankside Open Spaces Trust
and Oasis Hub Waterloo**, Living
Space 1 Coral Street SE1 1HA

Black Prince Trust, 5 Beaufoy
Walk SE11 6AA

Coin Street, 108 Stamford Street
SE1 9NH

Cottington Close RMO
1 Opal Street SE11 4HZ

**Kennington Park Community
Centre**
8 Harleyford Street SE11 5SY

**Lollard Street Adventure
Playground**, 102 Lollard St,
Kennington SE11 6PX

Oasisplay, 64 Bolton Crescent
SE5 0SE

The Boury Academy CIC
The Boury Academy Studios Wyvil
Road SW8 2TJ

**The Triangle Adventure
Playground Association**,
Ashmole Street SW8 1NF

**UINCAP, Kennington Park
Centre**
40 St Agnes Place SE11 4BE

UK Latin Community CIC
The Carmelita Centre 41 Vauxhall
Walk SE11 5JT

Vauxhall City Farm
165 Tyers Street SE11 5HS

Clapham

Activities4U, Harris Academy
33 Clarence Avenue SW4 8LD

Art4Space, Unit 1
31 Jeffrey's Road SW4 6QU

Autism Voice, 161-167 Clapham
Manor Street London SW4 6DB

**Big Up Communities and
Springfield Community Flat**
Stewarts Road Adventure
Playground SW8 4UG

East African Association
Larkhall Park Courland Grove
SW8 2PX

EMCAUK, 283-291 Wandsworth
Road SW8 2ND

**Metropolitan Thames Valley
Housing**, The Cube Community
Centre 116 Kings Avenue SW4 8EP

Oasis Children's Venture
Oasis Nature Garden SW4 6ST

Oasisplay, 33 Priory Grove
SW8 2PD

Omnibus, 1 Clapham Common
Northside SW4 0QW

UK Latin Community CIC
Hawkesworth Hall Oaklands
Estate SW4 8NA



Young People Matter, Larkhall
Park Primary School SW4 6PH

Norwood

All Stars Activity CIC
(2 locations)
St Joseph's Nursery and Infant
School Crown Dale SE19 3NX

Crown Lane Primary School
SE19 3NX

BiG (Besty's Inspirational
Guidance)
Rosendale Playing Fields SE21
8LW

Our Parks, Julian's Primary
School 16 Wolfington Rd SE27 0JF

Rathbone (2 location)
The Old Library 14-16 Knights Hill
SE27 0HY

Central Hill Community Youth Hub
Central Hill Estate Lunham Road
SE19 1AA

Upper Norwood Library Trust
Upper Norwood Library Hub
39 Westow Hill SE19 1TQ

ALL-YEAR-ROUND ACTIVITIES

Get active, get healthy, get creative!

London Borough of Lambeth have recently re-commissioned a range of youth and play services across the borough for early intervention and prevention. The services are focussed across 5 localities to provide a range of activities for five to-19-year-olds and up to 25 with a special education need or disability (SEND). The five localities are Brixton, Norwood, Streatham, Clapham and North Lambeth. Activities have been designed to improve outreach, increase physical activities and improve the mental and physical health of young people.

Get in touch now to find out what activities are available for children and young people to get active, get healthy and get creative!



Rathbone Youth Club
www.rathbonesociety.org.uk
020 8766 9280

4All
www.4-all.org.uk/whatwedo
07432 118 859

Ashdon Jazz Academy
www.ashdonjazzacademy.org.uk
07949 875 605

Fulham FC
www.fulhamfc.com/foundation
020 3871 0811

High Trees
www.high-trees.org
020 8671 3132

Norwood Community Group
www.norwoodcommunitygroup.co.uk
07931 919 585

Upper Norwood Library Hub
www.uppernorwoodlibraryhub.org
0208 670 4321

The Great North Wood Collective
www.greatnorthwoodcollective.org

Oasis Children's Venture
www.oasisplay.org.uk
020 7622 8756

Knights Youth Centre
www.knightsyouthcentre.org.uk
07562 018 228

Clapham Park Project
www.claphampark.org.uk
020 8678 5900

Autism Voice
www.autismvoice.org.uk
08458605547

The Hebe Foundation
www.thehebefoundation.org.uk
07807 222010

Clapham Youth Centre
www.claphamyouthcentre.org.uk
020 7274 3011

CEF LYNCX
www.cef.org.uk
020 7737 4274

Streatham Youth and Community Trust
www.syct.org.uk
020 8769 5884

UINCAP, www.uincap.com
07739 973 890

St Michaels Fellowship
www.stmichaelsfellowship.org.uk
020 8835 9570

Inspirational Youth
www.inspirationalyouth.org
07447 140 104

The Baytree Centre
www.baytreecentre.org
020 7733 5283

Marcus Lipton Community
www.mlcommunity.co.uk
020 8001 2188

IRMO, www.irmo.org.uk
020 7733 9977

Spiral Skills
www.myspiral.co.uk

Ebony Horse Club
www.ebonyhorseclub.org.uk
020 7738 3478

Grove APG
www.groveadventureplayground.com
020 7274 3893

Big Kid Foundation
www.bigkidfoundation.org
020 8655 7657

Step Now
www.stepnow.co.uk

Club Alford House
www.alfordhouse.org.uk
020 7735 1519

Active Communities Network, www.activecommunities.org.uk
020 7407 8177

Young People Matter
www.youngpeoplematter.org
020 7274 4503

Oasis Waterloo
www.oasiswaterloo.org
020 7921 4205

Fight4Change
www.fight4change.org.uk
0207 7171691

Triangle APG
www.triangleadventureplayground.com/
07900 475 143

ACTIVE LAMBETH

Leisure for all



SUMMER HOLIDAY PROGRAMME



New Family Leisure Zone

An exciting new facility at Brixton Recreation Centre, the Family Leisure Zone incorporates a dynamic range of fun physical activities for the whole family! Find fantastic soft play, an interactive agility course and challenging clip n' climb – there's something for everyone. **Starting at just £4, book in for your 90-minute session today.**



Active Lambeth Swim School

Learn to swim! Active Lambeth Swim School offers beginners, improvers and advanced swimming lessons for children of all ages and abilities. Available at Brixton Recreation Centre, Clapham Leisure Centre and Streatham Ice and Leisure Centre.

School holiday swim crash courses

Our school holiday swim crash courses aim to develop little ones aged 4+ skills and confidence in the water. Running Monday to Friday during the summer school holidays across Active Lambeth swimming pools.

For more information visit:
www.lambeth.gov.uk/active-lambeth



Lambeth's Coolest Activity

Our Olympic size skating arena offers public skating, ice hockey, figure skating and more. The perfect place to cool off these summer holidays. Located at Streatham Ice and Leisure Centre.

Don't worry if you have never been on the ice before, we have skating aides to help you along.

Holiday Club

Available at Brixton Recreation Centre and Streatham Ice and Leisure Centre. Our fun-packed holiday club offers a variety of activities and high-quality care. Running Monday to Friday across Active Lambeth leisure centres during the summer holidays. Our holiday club keeps little ones aged 5-12 years old entertained with a wide range of activities from soft play, football, dance and ice skating!

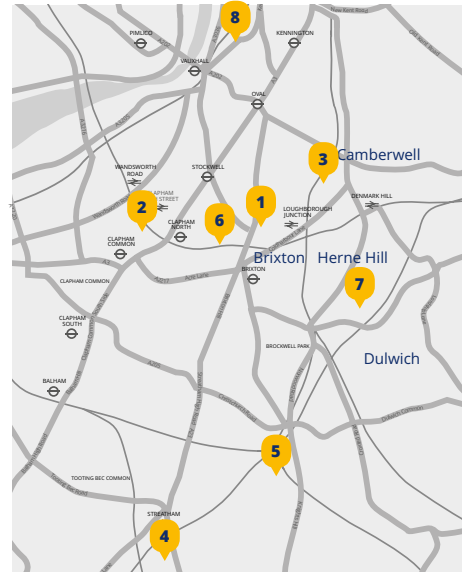
Concessionary holiday club rates available.

Gymnastics

Available at Clapham Leisure Centre and Brixton Recreation Centre. Develop agility and resilience! Gymnastics classes, including school holiday crash courses are available for all ages and abilities.



Where to find us



- 1 Brixton Recreation Centre**
27 Brixton Station Road,
London, SW9 8QQ
- 2 Clapham Leisure Centre**
141 Clapham Manor Street,
London, SW4 6DB
- 3 Flaxman Sports Centre**
Carew Street, London, SE5 9DF
- 4 Streatham Ice and Leisure Centre**
390 Streatham High Road,
London, SW16 6HX
- 5 West Norwood Health and Leisure Centre**
25 Devane Way, London, SE27 0DF
- 6 Ferndale Community Sports Centre**
Nursery Road, London, SW9 8BP
- 7 Herne Hill Lifestyle Centre**
Ferndene Road, London, SE24 0AG
- 8 Archbishop's Park**
40 Carlisle Lane, London SE1 7LE

Having your say in Lambeth elections

Calling all young people in Lambeth.
Find out more and register to vote at
gov.uk/register-to-vote

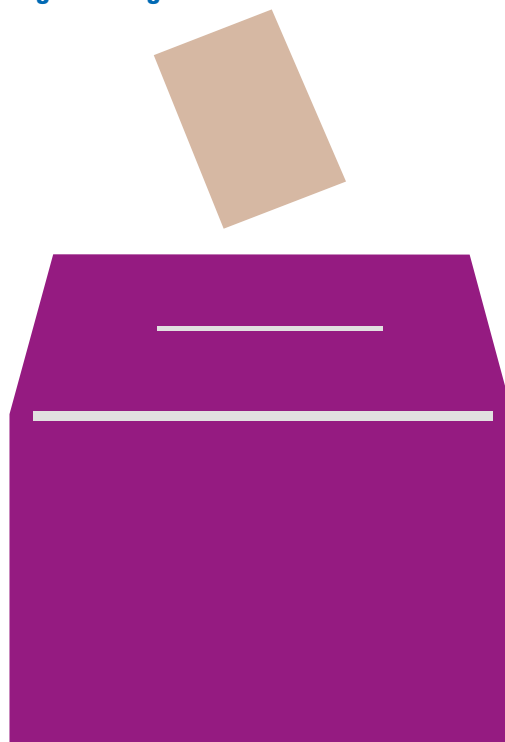
Remember to register to vote

If you're not registered, you can't vote. It's as simple as that. In England, you can register to vote when you're 16, but you can only start to vote when you turn 18. You don't need to register before every election. You need to register if:

- you've never registered to vote before
- you've just become old enough to register

You'll stay registered to vote as long as you live at that address and don't change your name. When you become old enough to vote in different elections, your record will be updated automatically.

Registering to vote takes just five minutes if you do it online and all you'll need is your National Insurance number. Register to vote at: **gov.uk/register-to-vote**



There are 4 types of elections that take place in Lambeth:

- General elections
- Local government
- Mayor of London and London Assembly
- Referendums

General Elections

The UK Parliament is elected at the UK general election, usually every 5 years.

At a general election you have one vote to choose a candidate to represent your constituency.

After a general election, the leader of the party with the most MPs becomes Prime Minister and forms a government that will run the country.

To vote in a general election you must:

- be registered to vote
- be 18 or over on the day of the election ('polling day')
- be a British, Irish or qualifying Commonwealth citizen
- be resident at an address in the UK (or a British citizen living abroad who has been registered to vote in the UK in the last 15 years)
- not be legally excluded from voting.

Local Elections

Local councillors are elected at local elections, which take place at least every 4 years.

Local councillors oversee the work of the council and set the strategies and priorities. When you vote in local elections, you vote for councillors to represent your ward.

To vote in a local government election you must:

- be registered to vote
- be 18 or over on the day of the election ('polling day') (16 or over in Scotland and Wales)
- be registered at an address in the area you want to vote in
- not be legally excluded from voting

You must also be one of the following:

- a British citizen
- an Irish or EU citizen

- a qualifying Commonwealth citizen
- a citizen of another country living in Scotland or Wales who has permission to enter or stay in the UK, or who does not need permission

If you live in 2 different local authority areas (for example because you're a student), you may be able to vote in both areas.

Mayor of London and London Assembly

The Mayor of London and London Assembly represent the people living in London, and elections are held every four years.

At these elections, you vote for:

- the Mayor of London
- your constituency London Assembly Member
- the London-wide Assembly Members

The Mayor of London sets a vision for the city, and the budget to put that vision into action.

The London Assembly holds the mayor to account and investigates issues that are important to London.

If you are eligible to vote and are registered to vote in London, you can vote in the Mayor of London and London Assembly elections.

From May 2023 for local elections, and October 2023 for UK Parliamentary (general) elections, **anyone voting in person at a polling station will need to show photographic identification to receive their ballot paper.** Go to [gov.uk/how-to-vote/photo-id-youll-need](https://www.gov.uk/how-to-vote/photo-id-youll-need) to find out acceptable forms of photo ID, and what to do if you do not have one.

The next election to take place in Lambeth will be for the Mayor of London and London Assembly which is scheduled for 2 May 2024, however a by-election or a snap general election can be called at short notice.



giving
your child
a better
start

free childcare for 2, 3 and 4 year olds

Some families with 2 year olds and all families with 3 and 4 year olds can claim up to 15 hours a week of registered childcare. Some working parents can claim up to 30 hours a week. You can choose between a variety of settings, such as a childminder, nursery or preschool playgroup.



Don't miss out

Find out more and apply at:
lambeth.gov.uk/freeearlylearning
Or call 020 7926 9558



Lambeth

EARLY YEARS

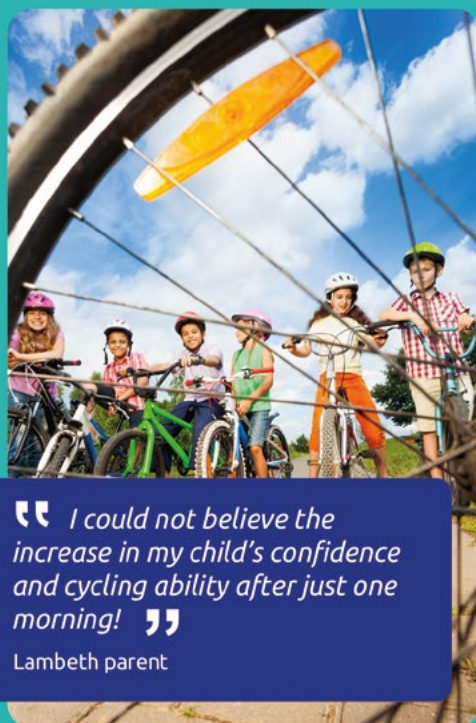
Lambeth Parent Champions programme wins national award

A Lambeth Council programme, **the Lambeth Parent Champions**, has been awarded the prestigious Parent Champion Scheme of the Year award by Coram Family and Childcare.

Lambeth Parent Champions are local parents who volunteer their time to inform others about Lambeth's Early Years services. The programme was started to encourage parents in Lambeth to take up the free early learning offer for two-year-olds. The offer gives children of eligible parents access to free 15 hours of education and childcare a week.

Parent Champions have played a vital role in increasing awareness of the offer, encouraging those eligible to apply and supporting them in their application. To find out more about the Lambeth Parent Champion programme visit www.lambeth.gov.uk/parentchampions





“ I could not believe the increase in my child's confidence and cycling ability after just one morning! ”

Lambeth parent

FREE SUMMER HOLIDAY CYCLING COURSES

Lambeth Council are funding **FREE** cycle training for children during the summer holidays.

Training is in small groups with two fully qualified Cycle Confident instructors.

Complete beginner courses, intermediate off-road courses and on-road courses are all running from Brockwell Park and Clapham Common (where bikes are available to borrow).



Places are limited so please book early

For more information & to book a session, please visit www.cycleconfident.com/lambeth or call Cycle Confident on **020 3031 6730**

CYCLE
CONFIDENT


Lambeth



Ready Steady Go!

FREE sessions to help families achieve a healthier diet and a more active lifestyle.

New programmes will be starting in September 2023. To register or make a referral please use our online link at lambeth.gov.uk/ready-steady-go

Contact the team on **020 7926 0619** or email readysteadygo@lambeth.gov.uk




Lambeth

FAMILY HUB START FOR LIFE



Lambeth is one of 75 areas across the country to have been awarded additional funding as part of a national 'Family Hub Start for Life' programme. This programme will run until March 2025 and allows us to provide extra services and support for families and children from pregnancy right up to age 19, or 25 for young people with special educational needs and disabilities.

Lambeth's Start for Life offer

Our 'Better Start' offer includes lots of services, help and support available to families through our network of children's centres. These include health services like:

- ante-natal and post-natal care
- baby clinics
- groups to support breastfeeding and infant feeding
- support around children's diet and nutrition.

Speech and language therapists provide support around children's early communication and language skills, and some centres provide additional specialist support for children with special educational needs and disabilities.

Centres also offer stay and play sessions and activities for babies, toddlers and young children to attend with parents and carers, and some centres provide childcare, including free early learning for 2 year olds.

There are lots of services for parents and carers too, including:

- family learning courses
- parenting support groups
- ESOL classes
- support around training and employment.

Families can get information about accessing benefits or housing from a skilled advisor. The centres' Better Start workers offer additional help and support about a wide range of topics including parenting and

child development, childcare, and signposting to other services.

The additional funding will help us to increase our 'Better Start' offer for families, with more services and support. There will be more opportunities for parents and carers to get involved and have their say too, or to train as a Parent Champion to help other parents to access services. You can find out more on the services available at www.lambeth.gov.uk/childrenscentres

Lambeth's Family Hub Network

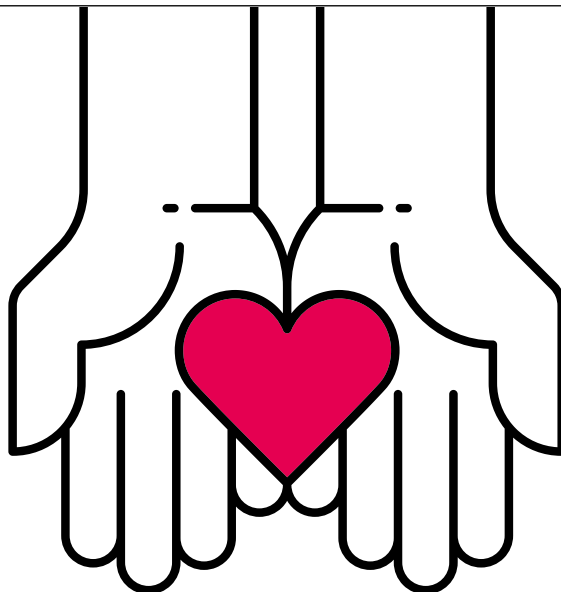
In the next two years we will be developing a new online Family Hub to provide information about all the services and support available. Check for updates www.lambeth.gov.uk/fid

SUPPORT

Cost of living support available now

Lambeth Council and local charities are here to help during the cost of living crisis.

For further information visit our website
lambeth.gov.uk/costofliving



Lambeth Council has agreed a £10 million package of vital support for those hit hardest by the cost of living crisis.*

We can help you with:

- Council tax support and rebates
- Access to benefits and grants
- Making your home energy efficient, reducing your bills
- Access to Foodbanks and low-cost food
- Emergency Support Scheme - support for residents in an emergency, crisis or disaster
- Job and business start-up support
- Holiday activities

Emergency Support

The Emergency Support Scheme helps Lambeth residents that are facing hardship, a crisis, emergency, or disaster. This includes struggling to pay bills or afford food.

Visit www.lambeth.gov.uk/ESS for more information

* Comprising £4m additional council funding and £6m UK Government funding.

You can also get independent advice from

Citizens Advice Merton and Lambeth (CAML)

Telephone: Lambeth Adviceline 0800 254 0298

www.caml.org.uk

Brixton Advice Centre

Telephone: 020 7095 5908

Monday to Thursday 10am – 3pm

www.brixtonadvice.org.uk

Centre 70 (C70)

Telephone: 020 8670 0070

Monday to Friday 10am – 4pm

Email: enquiries@centre70.org.uk

www.centre70.org.uk

Groundwork

The Green Doctors offer free, impartial advice and support to help you save energy, reduce your bills, and live in a warmer, more comfortable home.

Telephone: 03003 653 005

www.groundwork.org.uk

Food Support:

The Lambeth Larder website has useful information about where to find local help and support, including emergency support. Visit www.lambethlarder.org or email them on info@lambethlarder.org

Trussell Trust foodbanks provide a minimum of three days' nutritional, non-perishable food.

You can find more information on

www.trusselltrust.org

[/get-help/find-a-foodbank/](https://www.trusselltrust.org/get-help/find-a-foodbank/)

Pension Credit:

Pension Credit is a payment to top up your income, which you can apply for when you reach state pension age. How much you could get depends on the value of your current state pension, other income, and any savings you may have.

Check if you are eligible on www.gov.uk/pension-credit

or call the Pension Credit claim line on 0800 99 1234.

You will need the following information ready:

- Your National Insurance number
- Information about your income, savings and investments
- Your bank account details

Free School Meals:

Even though all primary school children will receive free school meals in the 2023/24 school year, if you are in receipt of income-related benefit, council tax support or discretionary housing payments you should still apply for free school meals through your school. This ensures you will have access to additional support during the school holidays, including Holiday Activities and Food programme and additional financial support (£20 per child, per week, distributed by schools).

At a glance look at what you might have received and might be entitled to:

Who	Summer 23	Autumn 23	Winter 23/24	Spring 24
Pensioners			£150-£300 If in receipt of Winter Fuel Payment via winter fuel payment route	
Disabled	£150 For people receiving disability payments, via disability benefit			
Low income	£140 Residents on income based free school meals, through schools	£300 For residents in receipt of means-tested benefits, paid through your benefits	£299 For residents in receipt of means-tested benefits, paid through your benefits	
Low income residents most impacted by rising costs	Lambeth Council cost of living payment up to £250		Lambeth Council cost of living payment up to £250	

FESTIVALS & EVENTS

Lambeth Children and Young People's Readers and Writers



Full programme on lambeth.gov.uk/ReadersandWriters #LamLitFest23



Summer Reading Challenge 2023, Ready, Set, Read!

15 July to 3 September
4 to 12 years

This year's challenge is sports themed @Ready, Set, Read!' (www.summerreadingchallenge.org.uk) delivered in partnership with the national children's charity Youth Sports Trust (youthsportstrust.org) and public libraries.

SendSational Storytelling for children with additional needs

Thursday 27 July, 11am
Clapham Library, SW4 7DB
Ages 5 plus

Children will love these storytelling sessions, specially developed for those with additional needs. Library staff use Bag Books sensory props to tell stories. At the end of the session all children will receive this year's summer reading challenged themed- Ready, Set, Read rewards.

Hands on Print Workshop with Rose Robbins

Wednesday 12 July, 4pm
West Norwood Library, SE29 9JX
westnorwoodlibrary@lambeth.gov.uk
Ages 7 plus

Based on her book LOUD, author Rose Robbins will host a fun interactive musical themed

workshop. Using basic relief printing techniques, you will create and design your own album cover of your favourite artist, music or group.

Social Enterprise Business Start-up

Every Thursday from 29 June 2– 4pm
West Norwood Library, SE27 9JX
mkowfie@lambeth.gov.uk
14 to 25 years

Are you a young entrepreneur wanting to set up a business or require business advice? Lambeth Libraries has teamed up with social enterprise organisation Community Spark Change (CSC) to run a business start-up programme under their Block Change programme for young people who are thinking of setting up their own business. This is a 12-week programme and will cover:

- Understanding the workings of a company limited by guarantee
- Child protection/safeguarding policies
- Health and Safety
- Equal Opportunity and Article of Association policies
- Contracts
- Funding

At the end of the course your work will be showcased in your very own Business Fair for young people.

SOUTHBANK CENTRE

PLANET SUMMER

Open until 3 September

A season about community care and optimism in response to the climate crisis. Exciting music based events, from soulful house music, funk, disco to Afro-centric dance music. There's a series of workshops celebrating African fashion, and the whole site will have free public artworks, including Poems for our Planet, which supported the elderly with loneliness and people with wellbeing.

FAMILIES & YOUNG PEOPLE | VISUAL ART | FREE PROGRAMME | RED ROPE

12–13 August, 12 noon
Clore Ballroom, Royal Festival Hall.
Free and unticketed. For all ages.

Projections of artwork, poetry, dance and music by performers and artists with Down's syndrome, autism and other learning disabilities. Together, the film creates an underwater paradise of dynamic projections for a profound reminder of the beauty and fragility of our oceans.

<https://www.southbankcentre.co.uk>

SUMMER PROGRAMME FOR YOUNG PEOPLE

Create your summer

The Lambeth Made Create Your Future Summer Programme will be running again this summer!

The programme offers young people who live in Lambeth aged 16-19 (or up to 25 with additional needs) the opportunity to learn a new vocational skill. This can help to support them to move into employment, training or to gain a qualification.

The Create Your Future Summer Programme centres around supporting young people who often face complex barriers when it comes to education, employment or training and helping them either to:

- Move closer to the labour market and sustained employment
- Understand how to start a business
- Go in to further training or return to education
- Gain a vocational skill and develop existing skill(s)



To find out more about the Lambeth Made Create Your Future Summer Programme, and other ways we support young people in Lambeth, visit:

<https://lambethmade.org/>

© https://www.instagram.com/lambeth_made/

🐦 <https://twitter.com/LambethMade>

This is accomplished by delivering bespoke vocational training/ courses and employment support through programmes that will run throughout August 2023 for up to 4 weeks.

Violence Prevention Programme

The Lambeth Summer Violence Programme will be delivered for the third consecutive year, from July 24–3 November. The programme is for 16–25-year-olds living in Lambeth and will provide a range of interventions and activities to deter or divert young people away from risk-taking and anti-social behaviours.

The programme will be focussed on removing barriers to engagement and participation by distributing the delivery of interventions and activities

across the borough; and carefully considering areas with a higher frequency of violence.

Lambeth Council is always keen to incorporate the voices of our children and young people who have informed our commissioning priorities to also include innovative programmes that focus on specific skill development and valuable work experiences.

Follow us on social media to keep up to date with our Summer Violence Prevention Programme.

📷 @lambeth_council

🐦 @Lambeth_council





Lambeth

Being a parent
isn't easy

**we're here
to help**

Being a parent isn't easy, and it's normal to need some help along the way. We can help you find the right support for your family, whether this is attending a parenting course, completing a programme online, or with one-to-one support.

**Register for free parenting support at
lambeth.gov.uk/parenting**

