

Annual Inspection  
Kildoran Road

Inspection Ref: 1406328

Site Ref: 63714

Customer Order No:

Inspected: 01 July 2021 at 04:36 Inspector: [REDACTED]

**Risk Assessment 8 - Low Risk**



**Site Information**

**Location**

The site is located in an area of public open space and is overlooked by a number of properties in the local community.

**Suitability for disabled users:**

Generally accessible; an area accessible to most.

**Item:** Ancillary Items - Site General  
**Manufacturer:** Owner/Operator  
**Comments**

The site is accessible to the public during the COVID 19 pandemic. The government have released guidelines for safely re-opening these types of facilities which is available on the government website. Ensure there is an appropriate risk assessment in place and review regularly

Outdated Covid19 information signage is posted on the gate Remove the signage

There is weed / vegetation growth on, between, or around the edges of the paved surfacing Remove weed / vegetation growth

There is algae or moss growth on the safety surface resulting in slippery conditions Clean and treat appropriately

**Risk Assessment:** 8 - Low Risk

---



**Item:** Ancillary Items - Sign  
**Manufacturer:** Not Applicable  
**Comments**

It is recommended that signage, with information including the site address, contact information for maintenance issues and emergency contact details are provided for the facility Provide in accordance with the recommendations

**Risk Assessment:** 5 - Very Low Risk

---



**Item:** Gates - Gate - Pedestrian  
**Manufacturer:** Unknown  
**Comments**

There are openings that are less than 12mm that could trap or crush fingers Where possible a 12mm gap should be maintained on both sides or between the gate leafs

The gate has no drop bolt sleeves and/or drop bolts fitted Provide drop bolt sleeves and/or drop bolts

There is no padlock on the maintenance gate Provide a padlock to secure the gate

**Risk Assessment:** 8 - Low Risk

---



**Item:** Fences - Fencing - Flat Top

**Manufacturer:** Unknown

**Comments**

This item is satisfactory - no work required

**Risk Assessment:** 4 - Very Low Risk





---

**Item:** Ancillary Items - Bench  
**Manufacturer:** Unknown  
**Comments**

This item is satisfactory - no work required

**Risk Assessment:** 4 - Very Low Risk



---

**Item:** Ancillary Items - Picnic Table  
**Manufacturer:** Unknown  
**Comments**

This item is satisfactory - no work required

**Risk Assessment:** 4 - Very Low Risk



**Item:** Ancillary Items - Litter Bin  
**Manufacturer:** Unknown  
**Comments**

The adjacent foliage is overhanging the bin Cut back and maintain

**Risk Assessment:** 6 - Low Risk

---



**Item:** Rocking Equipment - Spring See-Saw  
**Manufacturer:** Kompan Ltd  
**Comments**

The equipment item complies with the requirements of the current applicable standard.

The surface area complies with the requirements of the current applicable standard.

There is some minor wear damage to the surface Monitor for any further deterioration and repair as required

There is minor damage to the handgrips/footrests Monitor and replace if required

There is minor vandalism damage to the body Remove the sharp protrusions

**Risk Assessment:** 6 - Low Risk

---



**Item:** Rotor Play - Roundabout  
**Manufacturer:** Berliner Seil Fabrik  
**Comments**

The equipment item complies with the requirements of the current applicable standard.

The surface area complies with the requirements of the current applicable standard.

This item is satisfactory - no work required

**Risk Assessment:** 4 - Very Low Risk

---





**Item:** Activity Equipment - Multi Play (Toddler)  
**Manufacturer:** Russell Leisure Ltd  
**Comments**

The equipment item does not comply with the requirements of the current applicable standard.

The surface area complies with the requirements of the current applicable standard.

There are a number of dents in the slide surface Monitor for any further deterioration and repair as required

The design of the barriers encourages standing or sitting and fails the requirements of BS EN 1176 Monitor - No remedial work recommended

There is/are finger entrapment/s in the structure and the item fails to meet the requirements of BS EN 1176 Part 1 4.2.7.6 Entrapment of fingers Monitor - No remedial work recommended

There is weed / vegetation growth on, between, or around the edges of the surfacing Remove weed / vegetation growth

There is some graffiti present Remove the graffiti

The item has damaged/missing component(s) Consider replacing damaged/missing components

There is damage to the surface Repair the damaged areas of surfacing

The bushes are worn or missing Replace worn or missing bushes

The paintwork on this item has been damaged or worn exposing the metal underneath which is rusting Treat any rusting components and repaint

There is algae or moss on the surface of the equipment Clean and treat appropriately

**Risk Assessment:** 8 - Low Risk



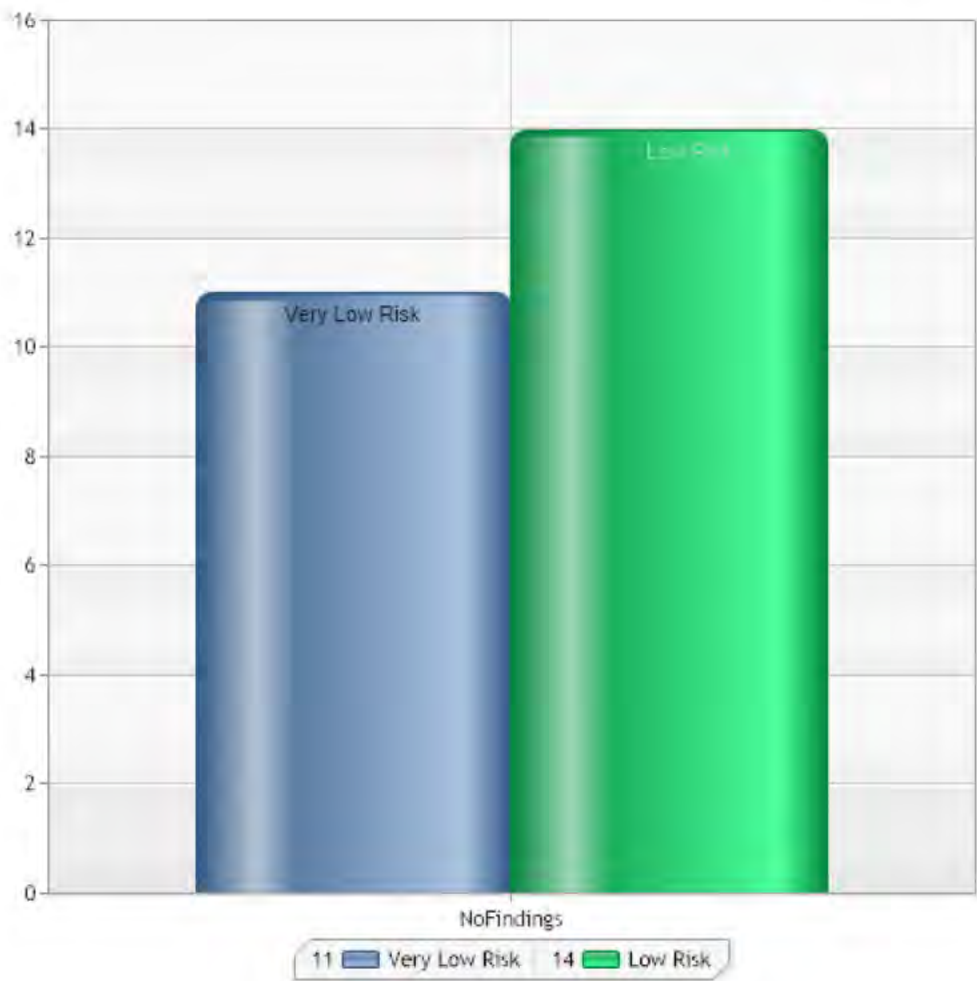


Annual Inspection Summary  
Kildoran Road

Inspection Ref: 1406328  
Site Ref: 63714  
Customer Order No:

Inspected: 01 July 2021 at 04:36  
Inspector: [REDACTED]

Risk Assessment 8 - Low Risk





<b>Item:</b>	Ancillary Items - Site General	<b>Risk Level:</b>	0 - Risk Assessment not Undertaken
<b>Manufacturer:</b>	Owner/Operator	<b>Surface:</b>	N/A



<b>Finding:</b>	The site is accessible to the public during the COVID 19 pandemic. The government have released guidelines for safely re-opening these types of facilities which is available on the government website.
<b>Action:</b>	Ensure there is an appropriate risk assessment in place and review regularly

<b>Item:</b>	Ancillary Items - Site General	<b>Risk Level:</b>	4 - Very Low Risk
<b>Manufacturer:</b>	Owner/Operator	<b>Surface:</b>	N/A



<b>Finding:</b>	Outdated Covid19 information signage is posted on the gate
<b>Action:</b>	Remove the signage

**Item:** Ancillary Items - Site General  
**Manufacturer:** Owner/Operator

**Risk Level:** 6 - Low Risk  
**Surface:** N/A



**Finding:** There is weed / vegetation growth on, between, or around the edges of the paved surfacing  
**Action:** Remove weed / vegetation growth

---

**Item:** Ancillary Items - Site General  
**Manufacturer:** Owner/Operator

**Risk Level:** 8 - Low Risk  
**Surface:** N/A



**Finding:** There is algae or moss growth on the safety surface resulting in slippery conditions  
**Action:** Clean and treat appropriately

---

<b>Item:</b>	Ancillary Items - Sign	<b>Risk Level:</b>	5 - Very Low Risk
<b>Manufacturer:</b>	Not Applicable	<b>Surface:</b>	N/A





**Finding:**

It is recommended that signage, with information including the site address, contact information for maintenance issues and emergency contact details are provided for the facility

**Action:**

Provide in accordance with the recommendations

**Item:** Gates - Gate - Pedestrian  
**Manufacturer:** Unknown

**Risk Level:** 8 - Low Risk  
**Surface:** All Weather Surface



**Finding:**

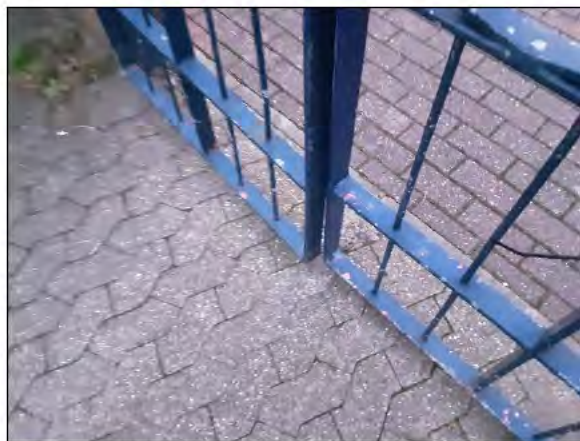
There are openings that are less than 12mm that could trap or crush fingers

**Action:**

Where possible a 12mm gap should be maintained on both sides or between the gate leaves

**Item:** Gates - Gate - Pedestrian  
**Manufacturer:** Unknown

**Risk Level:** 6 - Low Risk  
**Surface:** All Weather Surface

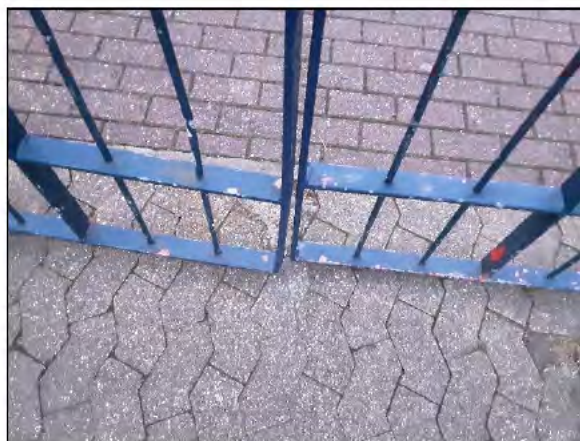


**Finding:** The gate has no drop bolt sleeves and/or drop bolts fitted  
**Action:** Provide drop bolt sleeves and/or drop bolts

---

**Item:** Gates - Gate - Pedestrian  
**Manufacturer:** Unknown

**Risk Level:** 6 - Low Risk  
**Surface:** All Weather Surface



**Finding:** There is no padlock on the maintenance gate  
**Action:** Provide a padlock to secure the gate

---



**Item:** Ancillary Items - Litter Bin  
**Manufacturer:** Unknown

**Risk Level:** 6 - Low Risk  
**Surface:** Brick Pavers



**Finding:** The adjacent foliage is overhanging the bin  
**Action:** Cut back and maintain

---

**Item:** Rocking Equipment - Spring See-Saw  
**Manufacturer:** Kompan Ltd

**Risk Level:** 4 - Very Low Risk  
**Surface:** Wet Pour



**Finding:** There is some minor wear damage to the surface  
**Action:** Monitor for any further deterioration and repair as required

---



Item:	Rocking Equipment - Spring See-Saw	Risk Level:	6 - Low Risk
Manufacturer:	Kompan Ltd	Surface:	Wet Pour



**Finding:** There is minor damage to the handgrips/footrests  
**Action:** Monitor and replace if required

---

Item:	Rocking Equipment - Spring See-Saw	Risk Level:	6 - Low Risk
Manufacturer:	Kompan Ltd	Surface:	Wet Pour



**Finding:** There is minor vandalism damage to the body  
**Action:** Remove the sharp protrusions

---

**Item:** Activity Equipment - Multi Play (Toddler)  
**Manufacturer:** Russell Leisure Ltd

**Risk Level:** 4 - Very Low Risk  
**Surface:** Wet Pour



**Finding:** There are a number of dents in the slide surface  
**Action:** Monitor for any further deterioration and repair as required

---

**Item:** Activity Equipment - Multi Play (Toddler)  
**Manufacturer:** Russell Leisure Ltd

**Risk Level:** 4 - Very Low Risk  
**Surface:** Wet Pour



**Finding:** The design of the barriers encourages standing or sitting and fails the requirements of BS EN 1176  
**Action:** Monitor - No remedial work recommended

---

<b>Item:</b>	Activity Equipment - Multi Play (Toddler)	<b>Risk Level:</b>	5 - Very Low Risk
<b>Manufacturer:</b>	Russell Leisure Ltd	<b>Surface:</b>	Wet Pour





**Finding:**

There is/are finger entrapment/s in the structure and the item fails to meet the requirements of BS EN 1176 Part 1 4.2.7.6 Entrapment of fingers

**Action:**

Monitor - No remedial work recommended

**Item:**

Activity Equipment - Multi Play (Toddler)

**Risk Level:**

6 - Low Risk

**Manufacturer:**

Russell Leisure Ltd

**Surface:**

Wet Pour



**Finding:**

There is weed / vegetation growth on, between, or around the edges of the surfacing

**Action:**

Remove weed / vegetation growth

**Item:** Activity Equipment - Multi Play (Toddler)  
**Manufacturer:** Russell Leisure Ltd

**Risk Level:** 2 - Very Low Risk  
**Surface:** Wet Pour



**Finding:** There is some graffiti present  
**Action:** Remove the graffiti

---

**Item:** Activity Equipment - Multi Play (Toddler)  
**Manufacturer:** Russell Leisure Ltd

**Risk Level:** 6 - Low Risk  
**Surface:** Wet Pour



**Finding:** The item has damaged/missing component(s)  
**Action:** Consider replacing damaged/missing components

---



**Item:** Activity Equipment - Multi Play (Toddler)  
**Manufacturer:** Russell Leisure Ltd

**Risk Level:** 8 - Low Risk  
**Surface:** Wet Pour

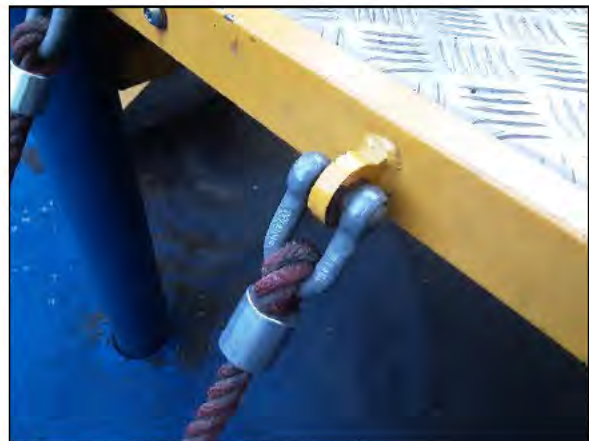


**Finding:** There is damage to the surface  
**Action:** Repair the damaged areas of surfacing

---

**Item:** Activity Equipment - Multi Play (Toddler)  
**Manufacturer:** Russell Leisure Ltd

**Risk Level:** 8 - Low Risk  
**Surface:** Wet Pour



**Finding:** The bushes are worn or missing  
**Action:** Replace worn or missing bushes

---



**Item:** Activity Equipment - Multi Play (Toddler)  
**Manufacturer:** Russell Leisure Ltd

**Risk Level:** 6 - Low Risk  
**Surface:** Wet Pour



**Finding:** The paintwork on this item has been damaged or worn exposing the metal underneath which is rusting  
**Action:** Treat any rusting components and repaint

---

**Item:** Activity Equipment - Multi Play (Toddler)  
**Manufacturer:** Russell Leisure Ltd

**Risk Level:** 6 - Low Risk  
**Surface:** Wet Pour



**Finding:** There is algae or moss on the surface of the equipment  
**Action:** Clean and treat appropriately

---

Annual Inspection Summary  
Kildoran Road

Inspection Ref: 1406328

Site Ref: 63714

Customer Order No:

Inspected: 01 July 2021 at 04:36

Inspector:

Risk Assessment 8 - Low Risk

	N/A	Very Low	Low	Moderate	High	Very High	Total
Activity Equipment - Multi Play (Toddler)	0	4	6	0	0	0	10
Fences - Fencing - Flat Top	0	1	0	0	0	0	1
Ancillary Items - Picnic Table	0	1	0	0	0	0	1
Rotor Play - Roundabout	0	1	0	0	0	0	1
Rocking Equipment - Spring See-Saw	0	1	2	0	0	0	3
Ancillary Items - Litter Bin	0	0	1	0	0	0	1
Ancillary Items - Bench	0	1	0	0	0	0	1
Gates - Gate - Pedestrian	0	0	3	0	0	0	3
Ancillary Items - Sign	0	1	0	0	0	0	1
Ancillary Items - Site General	1	1	2	0	0	0	4
<b>Totals:</b>	<b>1</b>	<b>11</b>	<b>14</b>	<b>0</b>	<b>0</b>	<b>0</b>	<b>26</b>