

Lambeth
**SANCTUARY
SERVICES**



Lambeth

Welcome Pack for Sanctuary-Seekers



We welcome you to Lambeth

www.lambeth.gov.uk/lambeth-sanctuary-services

CONTENTS

Contents.....	2
Lambeth Council	2
Lambeth Sanctuary Services.....	3
Local voluntary and community groups	3
Health and wellbeing	3
Safeguarding	4
Police and fire brigade	4
Essential items	4
Education	5
weekly sessions for families with young children	6
Activities for young people.....	6
Libraries	6
Important information about dropping cigarette butts and rubbish	7
Advice agency and free legal advice.....	7
Travel.....	8
Places of worship	8
Public parks and green spaces	9
Clothes and baby banks	9
Local shops and markets.....	9
Things to do in Lambeth and nearby in London	10
ESOL	11

LAMBETH COUNCIL

- We want to ensure that you are well-supported in Lambeth, and can access help and opportunities in the borough you live in. This pack gives you information about services and places in Lambeth for you and your family.
- If you need help, you can call 020 7926 1000 or you can visit www.lambeth.gov.uk
- [Here is a link to a map of Lambeth](#), with the wards identified (areas which the borough is divided, each with its own elected councillor).

LAMBETH SANCTUARY SERVICES

- Lambeth Sanctuary Services works to support and welcome sanctuary seekers (asylum-seekers, refugees, and others affected by forced migration).
- If you would like to get in touch with Lambeth Sanctuary Services, please email: sanctuary@lambeth.gov.uk
- We can also put you in touch with local charities who could help you – see some below.

LOCAL VOLUNTARY AND COMMUNITY GROUPS



- **Migrant Help:** www.migranthehelpuk.org
- **Care4Calais:** www.care4calais.org
- **South London Refugee Association:** www.slr-a.org.uk
- **London LGBTQ+ Community Centre:** www.londonlgbtqcentre.org

HEALTH AND WELLBEING



- You can register with a GP or dentist. You do not need proof of address, an ID or immigration status to register.
- Your hotel staff or Migrant Help (www.migranthehelpuk.org/Pages/Category/asylum) can also help you with getting registered with a GP or dentist.
- You can find your nearest GP here: www.nhs.uk/service-search/find-a-gp
- You can find your nearest dentist here: www.nhs.uk/service-search/find-a-dentist
- Some health services might need to be paid for, and you may be able to get help with the costs.
- In case of emergencies, you should contact NHS by calling **111** or visiting www.111.nhs.uk if you think you need medical help right away but you're not sure what to do.
- If urgent, call **999** or go to your nearest accident and emergency hospital. More information can be found here: [Find Urgent Care services - NHS \(www.nhs.uk\)](http://www.nhs.uk)



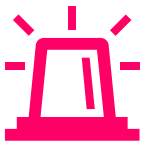
- Calls to 111 and 999 are free.
- You can speak to your GP about any concerns or worries about your mental health. There are some charities and groups in Lambeth and online who can help you, visit: www.hubofhope.co.uk

SAFEGUARDING

- If you have any safeguarding concerns – for example, you are worried about the physical or mental wellbeing of yourself or another person living in the hotel – please speak to the hotel manager or other hotel staff who will help you to access the appropriate support.
- If you have any concerns about domestic violence for either yourself or someone you know and you are ready to seek help, contact **Gaia**:
 - Phone: 020 7733 8724
 - 8am - 6pm every day, with additional out-of-hours on-call service provided via the same contact number.
 - Email: lambethvawg@refuge.org.uk

POLICE AND FIRE BRIGADE

- The police can help you in emergencies such as violence, robbery, or where someone has committed a crime. There are two free numbers to contact the police:



- **999** - To be used in real emergencies, where the police need to attend urgently. For example, serious assault, rape, or where there is danger to life.
- **101** - For non-emergencies and to report crimes that do not need an immediate police response. For example, damage to your property or suspected drug dealing in your area. 101 is also the number to contact your local police station.

- Call **999** if you have a fire in your home or see a fire somewhere else.

ESSENTIAL ITEMS

- The Council and other local charities organise donations of essential items like coats, trainers, and laptops from time to time.
- Your hotel will provide you with toiletries. Please speak to hotel staff if you need any of the following: shower gel, shampoo, toothbrush, toothpaste, deodorant, razors, washing powder, sanitary products, and maternity pads.



- For pregnant women and nursing mothers, please speak to the hotel staff who might be able to help with: a Moses basket, mattress and stand including fitted sheets and baby blankets (until they can get you a cot), baby bath, highchair for babies over six months old, nappies (in appropriate sizes) and nappy sacks.



- Feeding, bottles, sterilisation equipment, and formula milk powder will be provided if needed once a week and on arrival for babies under one year old. You will also have access to a kettle or kitchen area to prepare this.
- Please let hotel staff know if you need jars of baby food. The hotel staff will also ensure you have access to appropriate food for introducing solids.

EDUCATION

Getting your child a school or college place

- All children and young people who are school-aged will need to apply for a school/college place as soon as possible. Details of all Lambeth [primary schools can be found here](#), and [here for secondary schools](#).
- There are two ways to complete school/college applications: online or sending in a scanned paper version. Please speak to the hotel manager or other hotel staff who will support you in creating and sending the school application.
- Within 15 days of sending the school/college application, Lambeth Council's Admissions team will notify the parents/guardians about which school/college their child will attend and what the start date will be.



Support with buying uniforms and school supplies



- All children and young people seeking asylum who attend school are eligible for £100 each for uniform and other necessary school items. Schools will provide this directly to the child and Lambeth Council will reimburse the school.
- Ask your school about this. If they need more information, ask them to email sanctuary@lambeth.gov.uk

Free school meals

- At present, children and young people seeking asylum or who have no recourse to public funds (NRPF) can access free school meals. The school will organise this, they may ask for a copy of the Section 95 document from the Home Office as evidence.

- If you have any difficulties accessing free school meals for your child, please email sanctuary@lambeth.gov.uk for assistance.
- As of September 2023, all children attending a primary school in London will be entitled to free school meals, with no paperwork required.

WEEKLY SESSIONS FOR FAMILIES WITH YOUNG CHILDREN

- There are weekly sessions for families with children under the age of five at three locations, each one near one of the hotels. See details below.
 - **Agnes Riley Gardens, Clarence Avenue (corner off Poynders Road), London, SW4 8NZ** – every Wednesday during term-time, 11:00 – 14:00
 - **St. Stephen’s Children’s Centre, 1 Meadow Place, London, SW8 1XZ** – every Tuesday during term-time, 13:00 – 15:00. There is also the opportunity to cook and share meals at these sessions.
 - **Sunnyhill Children’s Centre, Harborough Road, London, SW16 2XW** – every Thursday during term-time, 11:00 – 14:00. There is also the opportunity to cook and share meals at these sessions.

ACTIVITIES FOR YOUNG PEOPLE

- During the school holidays, there are different Holiday Activities and Food (HAF) programmes. These activities are free and range from sports to arts and crafts.
- Young Advisors will visit the hotel once a month to give information about these activities, help young people sign up, and sometimes will be able to walk young people to these activities on the first day of the programme.



- To find out more about these activities and sign your child up, visit: www.lambeth.gov.uk/children-young-people-and-families/Young-peoples-support/activities-young-people
- To see other fun things for young people in Lambeth, such as youth clubs, parks, playgrounds and leisure facilities, [have a look at this interactive map](#).

LIBRARIES

- All public libraries are run by the council, and they provide computers with internet access. You can book a maximum of two hours a day, and it’s free to use.
- To find a library near you please check [this link](#).

- You can get a Lambeth library card by either speaking to Reception staff at a library in Lambeth, or by visiting this webpage which has library card application forms in different languages: www.lambeth.gov.uk/libraries-and-archives/join-library-0/library-membership-application-forms-other-languages
- As a Lambeth library member, you can borrow up to a maximum of 20 items or books, including up to six audio-visual items (DVDs, talking books and language courses).

IMPORTANT INFORMATION ABOUT DROPPING CIGARETTE BUTTS AND RUBBISH

- **Important:** In public spaces, **do not:**
 - Drop rubbish, including cigarette butts and chewing gum
 - Spit in an open public space
 - Urinate in public
- If you do, you may receive a Fixed Penalty Notice (FPN) fine of £150, which must be paid within 14 days from the date of issue. If this isn't paid, it could affect your asylum application if not paid. [Click here for more information about this.](#)
- You should throw away rubbish using the nearest public bin and cigarette butts using ashtray stubs on public bins or portable ashtrays.



ADVICE AGENCY AND FREE LEGAL ADVICE

Citizens Advice

- Citizens Advice is independent organisation specialising in confidential information and advice to assist people with legal, debt, consumer, housing, and other problems in the United Kingdom.
- Citizens Advice is a national charity and network of local charities that offer confidential advice online, over the phone, and in person, for free.



- Website: www.citizensadvice.org.uk

- Telephone: 0808 223 1133

- Citizens Advice also run a Help to Claim service which can help you with the early stages of your Universal Credit claim. You can talk to them on the phone, or online over chat.
 - For more information, visit: www.citizensadvice.org.uk/helptoclaim or call 0800 144 8444.

Law Works

- Law Works is a charity working in England and Wales that connects volunteer lawyers with people in need of legal advice, who are not eligible for legal aid and cannot afford to pay.
 - Website: www.lawworks.org.uk
 - Address: 296-302 High Holborn, London WC1V 7JH

TRAVEL

Getting around Lambeth and London

- Lambeth is well connected with Underground (tube), bus, and train links to the rest of the city.
- When you take the tube or train, you need to tap your Oyster card or contactless card payment when you enter the station **and** when you exit at your destination station.
- When you take a bus in London, you only need to tap your Oyster card or contactless card payment **once** when you get on the bus. You do not need to tap it when you get off the bus.

Oyster cards

- The Oyster card is a payment method for public transport in London. Young people aged 11 – 17 and people aged 60+ living in London are entitled to Oyster Photocards which give them reduced and free travel within London.
- There will be in-person support at the hotels on a monthly basis from volunteers commissioned by Lambeth Council to apply for these Oyster Photocards. Lambeth Council will pay the £15/£20 Oyster Photocard fee.
- For more information, please have a look at the relevant Transport for London (TfL) pages:
 - [11 – 15 Zip Oyster Photocard](#)
 - [16+ Zip Oyster Photocard](#)
 - [60+ London Oyster Photocard](#)



PLACES OF WORSHIP

- Lambeth is full of safe places where you can worship and practice your religion. These can easily be found by looking online for your religious place of worship in your local area.

PUBLIC PARKS AND GREEN SPACES

- To see where parks and green spaces are in Lambeth, visit: www.lambeth.gov.uk/parks
- Here are some parks in Lambeth and nearby:
 - Brockwell Park, Norwood Road, Herne Hill, SE24 9BJ
 - Clapham Common, Windmill Dr, London SW4 9DE
 - Streatham Common, London, SW16 3BX
 - Tooting Commons, London, SW16 1RT
 - Dulwich Park, College Rd, London, SE21 7EB
- For some great walking routes in **Lambeth**, visit: www.alltrails.com/en-gb/england/london/lambeth/walking
- For more walking routes in **London**, visit: www.alltrails.com/en-gb/england/london/walking
- If you like running, there are Park Runs every Saturday in parks across Lambeth and London. Visit: www.parkrun.org.uk to find out where and when they take place. Here are links to Brockwell Park and Clapham Common Park Run pages:
 - www.parkrun.org.uk/brockwell
 - www.parkrun.org.uk/claphamcommon



CLOTHES AND BABY BANKS

- **Adult clothes bank** at St Vincent's Centre Brixton, Talma Road, London, SW2 1AS
 - Every last Tuesday of the month, 11:00 – 14:00.
- **Baby bank** at Mosaic Clubhouse, 65 Effra Road, London, SW2 1BZ
 - Every last Saturday of the month, 12:00 – 13:00

LOCAL SHOPS AND MARKETS

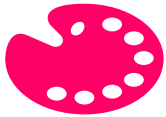
- The most popular UK supermarkets are Tesco, Sainsbury's, Asda, Morrisons, Aldi, Iceland, and Lidl. Visit www.supermarketgo.co.uk to find your nearest supermarket.
- There are lots of great shops and markets in Lambeth that sell a variety of food. Markets are good value and offer a broad range of international food.
 - **Brixton Market**, Brixton Station Rd, London, SW9 8PD
 - It has street food stalls and a general market on weekdays, a variety of stalls on Saturdays, and the Brixton Farmers Market every Sunday selling organic and free-range produce.



- **Lower Marsh Market**, Lower Marsh, London, SE1 7RG
 - This thriving market, run by 'We Are Waterloo'. It operates from Mondays to Saturdays.
- **Venn Street Market**, Venn St, London, SW4 0AT
 - This busy food market in the heart of Clapham operates on Saturdays.
- **Herne Hill Market**, Railton Rd, London, SE24 0JN
 - This vibrant market is packed with stalls selling locally produced food, plus arts and crafts and is open on Sundays, 10am – 4pm.
- **Vauxhall Market**, Battersea Park Rd, Nine Elms, London, SW8 5DZ
 - This is open on Sundays, 7am – 2pm.

THINGS TO DO IN LAMBETH AND NEARBY IN LONDON

Lambeth and London have many exciting things to do and places to explore.



- **Free museums and art galleries:** Many museums and art galleries in London are free, have a look at this webpage for more information: www.timeout.com/london/museums/free-art-galleries-museums-in-london
- **Vauxhall City Farm**, 165 Tyers Street, London, SE11 5HS – a free farm in the city, for more information, visit: www.vauxhallcityfarm.org

London has many historical and cultural landmarks. You may need to pay to enter some of them, but you can enjoy them without going in too. Here are some examples:

- **The London Eye**, Riverside Building, County Hall, London, SE1 7PB
- **Houses of Parliament and Big Ben**, Westminster Bridge, London, SW1A 0AA
- **Westminster Abbey**, 20 Deans Yd, London SW1P 3PA
- **Buckingham Palace**, London, SW1A 1AA
- **St Paul's Cathedral**, St. Paul's Churchyard, London, EC4M 8AD
- **Trafalgar Square**, London, WC2N 5DN

ESOL

- There are lots of free ESOL (English for Speakers of Other Languages) classes in Lambeth provided through Lambeth Adult Education, libraries, colleges, and community groups. Courses and conversation classes are available for complete beginners at entry Level 1 through to Level 2.
- **On the next few pages** is a map of ESOL classes in and near Lambeth, with an accompanying table with more detail corresponding to the numbers on the map. You will be able to see both formal and informal ESOL classes.
- Care4Calais run informal English classes for hotel residents in Vauxhall, led by Frances Plowden. Speak to Care4Calais staff in Vauxhall for more information.



Map of ESOL in and near Lambeth

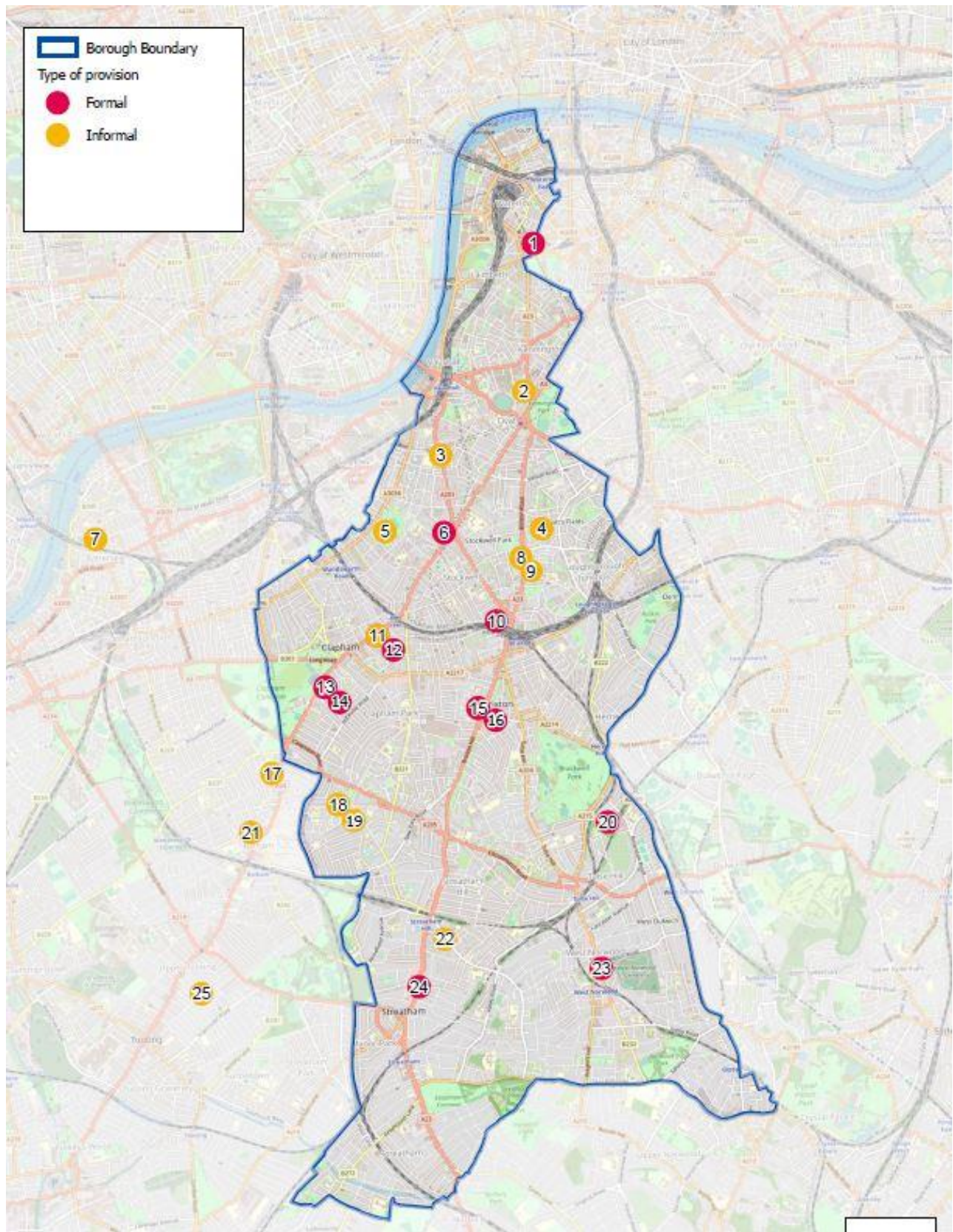


Table with detail on ESOL

Number on map	Provider	Times	Contact	Address	Type of provision	Other information
1	Lambeth Adult Learning at Morley College, Waterloo	Saturday 10:00 – 13:00 or 13:30 – 16:30 Tuesday and Wednesday 10:30 – 13:00	073953362 34 or Luna.Vythal ingum@morleycollege.ac.uk	Waterloo Centre, 61 Westminster Bridge Rd London SE1 7HT	Non-accredited and Formal - Accredited ESOL courses at Entry 1 on Saturday. Non-accredited ESOL for new readers and writers on Tues/Wed morning	Courses run term-time only at Waterloo centre (crèche for limited number of children over the age of 15 months)
2	English for Action	TBC		Henry Fawcett Children's Centre, Clayton Street. Kennington, SE11 5BZ	Informal, ESOL Conversation Club	
3	Lambeth Libraries, South Lambeth Library	Saturday, 10:30am - 12:30pm	southlambethlibrary@lambeth.gov.uk	180 South Lambeth Road, London, SW8 1QP	Formal - ESOL online with Lino - conversation	
4	Lambeth Adult Learning at Morley College, Liz Atkinson Children's Centre	Thursday morning	07396 397 487 or community@morleycollege.ac.uk or lizatkinsoncc@jsfederation.org.uk	Liz Atkinson Children's Centre, 9 Mostyn Road, SW9 6PH	Informal - Non-accredited ESOL at entry level	Course runs term time only. Crèche for limited number of children over the age of 6 months
5	Springfield Community Centre	Monday - Thursday, 10:00 -12:00	Elisabeth Ruiz	Christchurch Hall, 41 Union Grove SW8 2QG	Informal	
6	Lambeth Adult Learning at Morley College, Stockwell	Some weekday courses and large Saturday class, 10:00 – 13:00 or 13:30 – 16:30	073953362 34 or Luna.Vythal ingum@morleycollege.ac.uk	Stockwell Centre, 1 Studley Rd, London SW4 6RA	Formal - Accredited ESOL courses Entry 1 and Entry 2, Non-	Stockwell centre (behind Stockwell tube) does not have a crèche.

Number on map	Provider	Times	Contact	Address	Type of provision	Other information
					accredited and Formal - Accredited ESOL courses Entry 1 to Level 1	
7	Katherine Lowe Settlement (KLS)	Thursday, 12.30-2.30		108 Battersea High St, London SW11 3HP	Informal	Fares paid
8	ESOL – The Baytree Centre	Monday - Thursday (variable timetable)	Margaret Browne, 07 432 738360, margaret@baytreecentre.org.uk	300 Brixton Road, London, SW9 6AE	Formal - ESOL literacy classes for women, Informal - ESOL Conversation Club for girls awaiting school places	Social mobility programme, wellbeing sessions, After-school and holiday activities for girls, no creche
9	English for ALL Indoamerican Refugee Migrants Organisation (IRMO)	Online	0207 733 9977 or ete.info@irmo.org.uk		Informal	ESOL Computer based classes and IT workshops on web browsing, using the internet safely, managing finance on line, finding jobs and accessing online services.
10	Lambeth Adult Learning at MI Skills & Development	Monday - Friday (depending on the course), 9:30 - 12:00 and 12:00 - 15:00 and 15:30 - 18:00	020 7501 6450 or info@micosolutions.co.uk	The Queen, 47a Bellefields Road, Brixton. SW9 9UH	Formal - ESOL Reading and Writing at E1, E2, E3, Level 1 and Level 2	No creche, Unemployed and can take on some employed as well.
11	Alison Newbery	Thursday afternoons		91 Clapham High St, London SW4 7DB	Informal	No Creche

Number on map	Provider	Times	Contact	Address	Type of provision	Other information
12	Lambeth Libraries, Clapham Library	Tuesday, 2pm - 4pm	anewbery52@gmail.com	Mary Seacole Centre, 91 Clapham High Street. London, SW4 7DB	Informal, ESOL Conversation Club	No creche
13	Lambeth College, Clapham	Monday to Friday, daytime	customerreviews@southbankcolleges.ac.uk	45 Clapham Common South Side, London SW4 9BL	Formal - 16 - 18. Pre-Entry L1	
14	Lambeth College, Clapham	Weekdays, daytime, depending on course	customerreviews@southbankcolleges.ac.uk	45 Clapham Common South Side, London SW4 9BL	Formal - Pre entry to L1.	14-16 for applicants not in school, in year recruitment all year at Clapham, Weekdays, daytime, depending on course.
15	Lambeth College, Brixton	Weekday afternoons Entry Level only	customerreviews@southbankcolleges.ac.uk	56 Brixton Hill, London SW2 1QS	Formal	ESOL Computer based classes
16	Lambeth College, Brixton	Daytime weekdays Evenings weekdays Saturdays daytime	customerreviews@southbankcolleges.ac.uk	57 Brixton Hill, London SW2 1QS	Formal Adult, Entry 1, L1 and L2	Functions Skills Maths as part of ESOL courses and standalone courses. Means tested provision enrolment required, no creche.
17	Care4Calais	Wednesday mornings	Ascension Church, Balham	23 Malwood Rd, London SW12 8EN	Informal	
18	Learning Unlimited	4 times weekly	https://forms.gle/GDHKWh5NWxTo1cW36	Agnes Riley Centre, Atkins Rd SW12 0AH	Informal, ESOL Conversation Clubs during family learning sessions	ESOL - Online and face-to-face (Southwark and Lambeth)

Number on map	Provider	Times	Contact	Address	Type of provision	Other information
19	New Vision for Women	Monday mornings	nighat.khan@newvision4women.co.uk	Agnes Riley Centre, Atkins Rd SW12 0AH	Informal	Women only
20	Lambeth Adult Learning at Ripe Learning	Entry Level 1 (Beginner) - Wednesday & Thursday, 10am-12pm. Entry Level 2 (Beginner) - Monday & Tuesday, 10am-12pm. Entry Level 3 (Pre-Intermediate) - Thursday & Friday, 1pm-3pm. Level 1 (Intermediate) - Wednesday, 4pm-6pm. Pre-Entry Level (Absolute Beginner) - Friday, 10am-12pm	hello@ripelarning.com	Rosendale Community Centre, London, SE24 9DR	Formal, Entry to L3,	Blended online and in person
21	Lambeth Libraries, Balham Library	Monday, 10:00 - 12:00			Informal	
22	SLRA (slra.org.uk) Woodlawn's Centre	Tuesday, 10:30 - 12:00 and Thursday, 13:15 - 14:45	0203 490 3443 or admin@slra.org.uk	16 Leigham Court Rd SW16 2PJ	Informal	
23	Lambeth Libraries, West Norwood Library	Monday, 6pm - 8pm	westnorwoodlibrary@lambeth.gov.uk	1-5 Norwood High Street. London, SE27 9JX	Formal	
24	Lambeth Libraries, Streatham Library	Monday, 9:30am - 2pm and Wednesday, 10am - 2pm	streathamlibrary@lambeth.gov.uk	63 Streatham High Road, London. SW16 1PN	Formal	
25	CARAS	Women's ESOL Wednesday mornings, Women's beginner computer sessions on Friday mornings	020 8767 5378	25 Blakenham Rd, London SW17 8NE	Informal, ESOL conversation	Women only, creche available, fares paid

Number on map	Provider	Times	Contact	Address	Type of provision	Other information
26	Lambeth Adult Learning at Morley College, Lewington Centre	Weekdays	07395336234 or Luna.Vythalingum@morleycollege.ac.uk	Lewington Centre, 9 Eugenia Road, SE16 2RU	Non-accredited ESOL for new readers and writers on Tues/Wed morning	Courses run term-time only at Lewington Centre (no crèche)
27	Lambeth Adult Learning at Morley College, Jubilee Children's Centre	Monday morning	07395 397 487 or community@morleycollege.ac.uk or lizatkinsonc@jsfederation.org.uk	Jubilee Children's Centre, Tulse Hill, SW2 2JE	Informal , Non-accredited ESOL for new readers and writers on Tues/Wed morning	Courses run term-time only at Lewington Centre (no crèche)
N/A	Lambeth Adult Learning at Thames Reach	Online		Online	Online	