

Strategy Summary

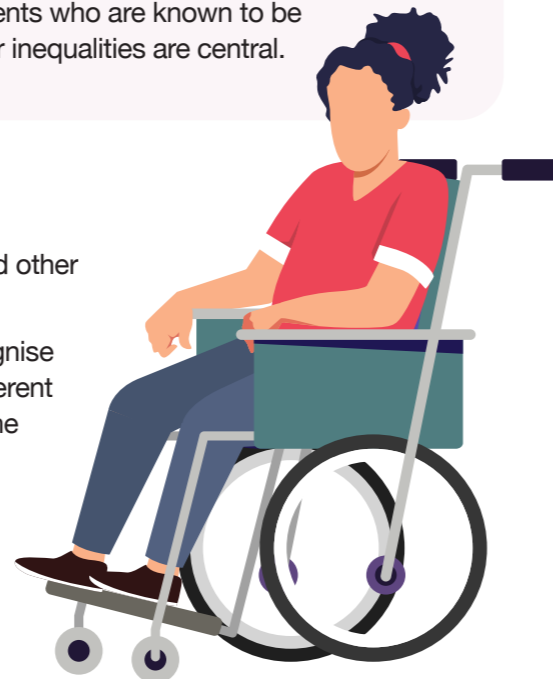
Our third Violence Against Women and Girls (VAWG) Strategy 2021-27 was published in October 2021. It sets out our vision that Lambeth is a borough where everyone is safe from gender-based violence and supports our Borough Plan ambition to make Lambeth one of the safest boroughs in London by 2030.

We know that domestic abuse, female genital mutilation/cutting, forced marriage, so-called 'honour'-based violence, sexual exploitation, sexual violence, stalking and harassment disproportionately affect women and girls and are usually perpetrated by men, but people of any gender can experience abuse of this nature and the consequences affect everyone. **The strategy outlines Lambeth's key priorities, goals and commitments as a partnership of organisations and residents to prevent and tackle all of these forms of violence and abuse.**



Specialist Support

- 1 All victims and survivors know where to go for help based on their individual needs and identity.
- 2 Victims and survivors of all forms of VAWG know that they will be believed and provided with free, independent, non-judgemental, and confidential support.
- 3 Support does not stop after a crisis.
- 4 Lived experiences of residents who are known to be more at risk because of other inequalities are central.



Working Together

- 1 Residents, communities, charities, businesses, statutory agencies and other stakeholders work in equal partnership.
- 2 Practitioners in services across the partnership and community: recognise abuse, understand the impact of trauma, make the links between different forms of VAWG; understand the dynamic nature of risk; understand the specific risks faced by marginalised groups; provide an appropriate response to disclosures; know what support is available to victims and survivors, their children, and perpetrators; prioritise keeping victims and survivors safe.
- 3 We identify and promote good practice and encourage reflection and learning.

Community Response

1 All forms of inequality and discrimination, including misogyny, are challenged at every opportunity.

2 Lambeth residents and communities are aware of all forms of VAWG, know how to recognise abuse, and where to find information and advice if they are experiencing VAWG or are supporting a family member, friend, neighbour, or colleague.

3 Everyone in Lambeth knows that violence and abuse are not inevitable.

4 Our public spaces are safe so women, girls and gender non-conforming residents can move freely through our streets, parks, transport hubs, hospitality and retail venues without fear of harassment, violence or abuse.

Children and Young People

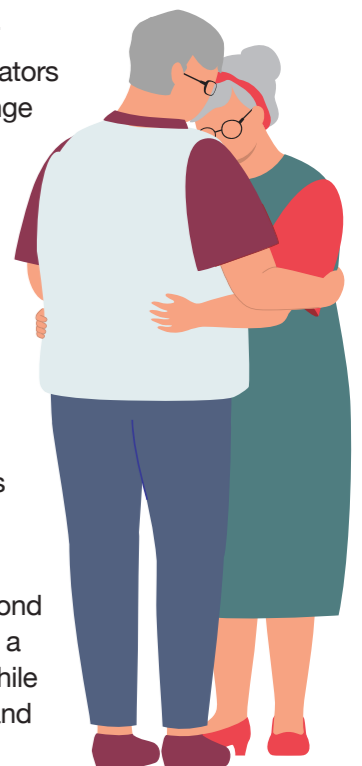
- 1 All Lambeth children and young people understand consent and healthy relationships and are safe from all forms of VAWG.
- 2 Children and young people who have experienced or been affected by any form of VAWG have access to specialist support to recover and lead positive lives safe from abuse.
- 3 Those working with children and young people in Lambeth can identify VAWG, the dynamics of exploitation and abuse, and respond rapidly and appropriately based on their individual needs and identity.
- 4 Spaces where children and young people experience harm beyond their families (such as schools, parks, transport hubs, neighbourhoods and online) are identified and made safe.
- 5 The impact of children and young people's experiences of VAWG is understood in the context of wider violence, structural inequalities, and discrimination. Interventions are culturally appropriate and able to minimise trauma and allow all children and young people to lead happy and healthy lives.



Reducing Harm from Perpetrators

Reducing harm from perpetrators goals/long-term outcomes:

- 1 Perpetrators have their behaviour (and the causes for their behaviour) challenged and are held to account.
- 2 Perpetrators are encouraged to access support to help them to recognise, address and stop their abusive behaviour at the earliest available opportunity. These responses will be gender responsive, trauma informed and culturally competent.
- 3 When perpetrators access support, or approach services, practitioners have the knowledge and skills to respond appropriately.
- 4 Wherever appropriate, perpetrators are prosecuted and the full range of criminal and civil powers are used to protect victims and survivors, and those experiencing abuse have confidence in these systems.
- 5 Communities are supported and empowered to raise awareness of VAWG, model healthy relationships, and challenge the harmful attitudes that cause and condone abusive behaviour.
- 6 Services understand and respond to the additional vulnerabilities a perpetrator may experience while remaining clear that violence and abuse are always a choice.



Action Plan

The annual action plans are developed with the partnership in mind and outline key actions that various agencies within the partnership will deliver to tackle Violence Against Women and Girls in Lambeth. Our first year's action plan focused on the foundations needed for this new way of working and to develop the actions and impact measures.

We use a standard colour coded system to indicate our progress on each action.



Specialist Support

Recommission a community-based service to reflect the needs of our diverse borough.

Improve the ways in which Child and Adolescence to Parent Violence is identified and responded to.

Maximise the existing offer of services.

Use local data to create a dashboard for understanding violence in the borough.

Group work, healing circles and programmes to offer recovery support for victims and survivors.

A panel of experts by experience helping to shape our work.

Work with pan-London and nationally commissioned services, including with the Greater London Authority and the Mayor's Office for Policing and Crime (MOPAC) to ensure that specialist supported accommodation is available for victims and survivors of VAWG across London. This will include domestic abuse refuge provision, and supported accommodation for women experiencing multiple disadvantages.

Working together

VAWG Champions - train and upskill residents and practitioners from across community groups, charities, agencies, businesses and faith organisations.

Increase staff participation across the partnership.

Secure access to a wide range of training and information resources.

Improve partnership working with wider participation.

Encourage organisations across the partnership to seek and achieve White Ribbon accreditation.

Improve information sharing, tracking and safeguarding.

Develop the Sexual Exploitation and Harm Panel (SEHP) to better meet the needs of those at risk from sexual exploitation and the practitioners who support them.

Community response

Develop a community engagement plan and ensure this is aligned with wider partnership communication plans.

Develop and establish **Expert by Experience** Panels informed by the consultation and engagement findings with local victims and survivors.

Work with the **Expert by Experience** panels to create a **Survivors Forum**, bringing together those with lived experience of VAWG to shape interventions.

Deliver and review our **Safer Streets** public spaces programme.

Improve the safety of women and girls in line with the **Women's Night Safety Charter** and **Night Time Economy Serious Violence** considerations.



Children and Young People

Develop a VAWG Children and Young People engagement plan and ensure all young people who reflect the demographic representation of Lambeth are involved.

Increase safety in public areas where children and young people experience harm beyond their families (such as schools, parks, transport hubs, neighbourhoods and online).

Participate on Lambeth Safeguarding Children Partnership (LSCP) audits and reviews concerning children witnessing and experiencing VAWG to improve inter-agency working and better safeguard and promote the welfare of children in Lambeth.

Ensure specialist support, including advocacy, counselling and therapeutic work, is provided for children and young people of all ages who have been affected by or experienced VAWG.

Implement findings and recommendations of the report on extent of involvement and impact of girls and young women involved in County Lines and criminal exploitation.

Reducing harm from perpetrators

Implement multi-agency and culturally competent perpetrator intervention(s), initially focussing on domestic abuse perpetrators.

Develop a Coordinated Community Response (CCR) model within the Criminal Justice System, to increase positive outcomes for victims/survivors and hold perpetrators to account.

Increase staff participation across the partnership in VAWG training, to improve responses to perpetrators and harmful behaviours.

Enhance understanding of and responses to co-existing ill mental health, substance misuse, and VAWG.

As part of the community engagement plan, consult with residents to enhance understanding of harmful behaviours, particularly in marginalised communities.

Aligned with the White Ribbon initiative and Children and Young People workstream, co-produce and implement improvement plan of interventions aimed at tackling misogyny and harmful gender norms.



Measuring Success

The action plan is monitored by a VAWG Strategy Delivery Group which brings together representatives from a range of voluntary and statutory organisations as well as experts by experience (residents who have lived experience of gender-based violence). This is to ensure that we are all working together and can address any barriers to the delivery of the strategy.

- 1.** There is an increase in referrals to the Gaia Centre and the demographics of victims and survivors accessing support better reflect the community
- 2.** Victims and survivors accessing support provide positive feedback and report feeling safer and having an improved quality of life
- 3.** ↑ % increase in the number of organisations across the partnership who report improved confidence and knowledge in tackling and responding to all forms of VAWG
- 4.** Improvements to information sharing and % increase of actions taken due to Multi-Agency Risk Assessment Conference (MARAC) Sexual Exploitation and Harm Panel (SEHP)
- 5.** Those with lived experience of VAWG report feeling involved in decision making and able to influence the borough's interventions
- 6.** Reviews into homicides and serious harm in the context of VAWG are able to evidence that recommendations and learning have been embedded and are sustainable
- 7.** Children and young people report feeling involved in decision making and able to influence the borough's VAWG interventions
- 8.** ↑ % increase in the number of organisations across the partnership who report improved confidence and knowledge in tackling and responding to the needs of children and young people impacted by VAWG
- 9.** ↑ % increase VAWG offences reported to the Police

10. ↓ % decrease in women and girls reporting feeling unsafe in Lambeth

12. ↑ % increase in the number of children and young people accessing specialist support

14. ↑ % increase of crime outcome rates for VAWG offences (Crime outcomes include charge, convictions, resolutions and conditional cautions, Clare's Law disclosures, Orders)

15. ↓ % decrease in repeat offending of VAWG perpetrators

16. Improved victim satisfaction within the criminal justice service

17. ↑ % increase in self-referrals and referrals from a wider range of services to the Gaia Centre

11. Reviews into homicides and serious harm in the context of VAWG are able to evidence that recommendations and learning have been embedded and evidence positive impact

13. ↑ % increase in children and young people supported by specialist services reporting reduced levels of risk and harm, increased feelings of safety and improved health and wellbeing

