

SEND and Inclusion Strategy

2021–2024

Progress Report – May 2024

If you require support, please visit our Local Offer or contact areaSENCOTeam@lambeth.gov.uk

We have examples of working well with children and young people to commission some youth and play services, and want to be more consistent

Our successes in engaging with children and young people:

1. Engaged with 150 children and young people who identified as having a disability through our Child Friendly Lambeth Strategy.
2. Fund and support the Youth Council. Appointed Young Commissioners and Young Advisors to quality assure our work and support with commissioning.
3. Held a SEND Youth Event for 14-25 year olds in partnership with Socialising Angels.
4. Appointed a new SEND Youth Involvement Coordinator, to start in April 2024.

Remaining actions to feed into our next strategy:

We will embed children and young people's voice more consistently, including through existing SEND youth forums in schools, through a SEND co-production and engagement group.

We are committed to improving our engagement with families, and listening to them about what has worked well and what could improve

Our successes in working and co-producing with families:

1. Started an annual SEND Survey, receiving 140 responses, with in-depth written responses that shaped a year-long action plan.
2. Consulted on Short Breaks, Home Care and Continuing Health Care to inform recommissioning of SEND-specific services.
3. Engaged with the Parent Forum to shape key services, including the HAF programme. Parents also play a strategic role on our SEND Strategic Board, chaired by the Corporate Director for Children, Families and Education.

Remaining actions to feed into our next strategy:

We will re-establish and refresh a SEND co-production and engagement group to give more opportunities for families to shape strategic decisions.

We redesigned the local offer in 2021 and created a new role to maintain it. We will use this to further improve its accessibility

Our successes in creating and sharing our Local Offer:

1. Extensive redesign of the Local Offer in 2021, to ensure there is a wealth of up-to-date and accurate information.
2. Created a new local offer coordinator post, to help maintain the site and make it more accessible.
3. Set up two working groups to shape the local offer and boost engagement.

Remaining actions to feed into our next strategy:

The working groups will work to improve access and experience of the local offer. This will include testing with families and young people to identify improvements.

We are working together to ensure we identify needs as early and promptly as possible to support families with young children

Our successes in identifying needs as early as possible:

1. More assessments from an earlier age, despite falling birth rates. This has led to a 41% increase in EHCPs issued over five years.
2. Appointed a specialist complex needs health visitor and two ASD home support workers and extended our outreach teams.
3. Reduced developmental assessment times by more than half for under 5s, and waiting times for CAMHS and physiotherapy.
4. Education outcomes are strong for those with EHCPs, including for those who are looked after.
5. Children and young people known to the Youth Justice Service receive access to a speech and language therapist.

Remaining actions to feed into our next strategy:

We will continue to work on reducing waiting times for ADHD assessment, as well as ASD through investment in workforce and support through waiting times.

We will support educational settings to ensure early intervention.

We need to support our workforce who are highly committed, and focused on delivering positive outcomes through training and resources

Our successes in building workforce SEND knowledge:

1. Delivered training to Early Years Staff through Dingley's Promise
2. Rolled-out training on the EHCP process
3. Communication training led by Speech and Language Therapists
4. Training on complex needs and safeguarding from the Children with Disabilities Team
5. Established SENCo Network to ensure workforce development

Remaining actions to feed into our next strategy:

We will roll out new SEND training, starting through the social care academy. This will help to improve awareness of frontline practitioners to signpost to the most relevant services in the council.

EHCP assessments and Annual Reviews are generally timely, and we are committed to ensure all are as high-quality as possible

Our successes in producing and maintaining high-quality EHCPs:

1. Established The Hub, providing faster and more consistent access.
2. Timely EHCP and Annual Reviews, with input from health workers
3. Positive feedback from parents who have gone through the EHCP process, especially on co-production.
4. EHCPs consistently include longer-term educational outcomes for adulthood.

Remaining actions to feed into our next strategy:

We will embed a rigorous quality-assurance process to ensure that EHCPs are maintained and shared appropriately across the partnership. We will also work with families to help them access support before and during the application process for an EHCP.

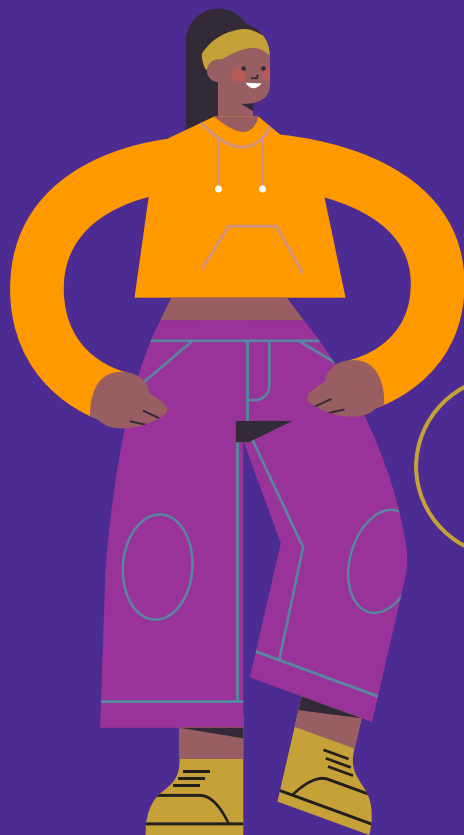
We have strong educational outcomes and recognise that we must improve signposting to support young people in transitions to adulthood

Our successes in supporting young people into adulthood:

1. A successful supported employment and internships programme with ambitious council-wide plans.
2. Over 95% level of participation in Education, Employment or Training for those with EHCPs.
3. Clear transitions to adult care services for those who access the Children with Disabilities Service.

Remaining actions to feed into our next strategy:

We will work on communicating the pathways to adulthood more clearly, especially in areas outside of education. We will work with families to build confidence in transitions, and understand their main sources of concern around the transition to adulthood for young people.



Next Steps for SEND and Alternative Provision Strategy 2024–2030

We have an extensive engagement plan, consulting with families, the community, and partners in education, health, and social care

Workshops with education officials and practitioners, social care managers, social workers, health managers from the NHS, and frontline health staff.

We are engaging through schools, to reach SENCOs and senior leaders.

Workshops and focus groups with children and young people through the Youth Council and other partners.

We will engage through schools, and attend council run events like the Lambeth Country Show and SENDsational fun day.

Workshops with families through the Parent Carer Forum, as well as focused interview.

We will engage through schools, and host drop-in clinics for any families to attend without booking.