



Children with Disabilities Levels of Need

The Lambeth Specialist 0-25 Disabilities Service is accessible to children who:

- Are residents of the London Borough of Lambeth.
- Are aged between 0 to 25 years.
- Have three or more indicators in each of the categories in the Severe or Complex columns in the attached tables
- Have been assessed as having a permanent and severe disability by a health clinician, including multiple disabilities, sensory impairments, or complex health needs.

This service is designed for children and young people with profound impacts on their day-to-day functioning and family life. It is not intended for all children defined by the Equality Act (2010) as having a disability as many families will be able to have their needs met from one of our other teams or from provision available in the community.

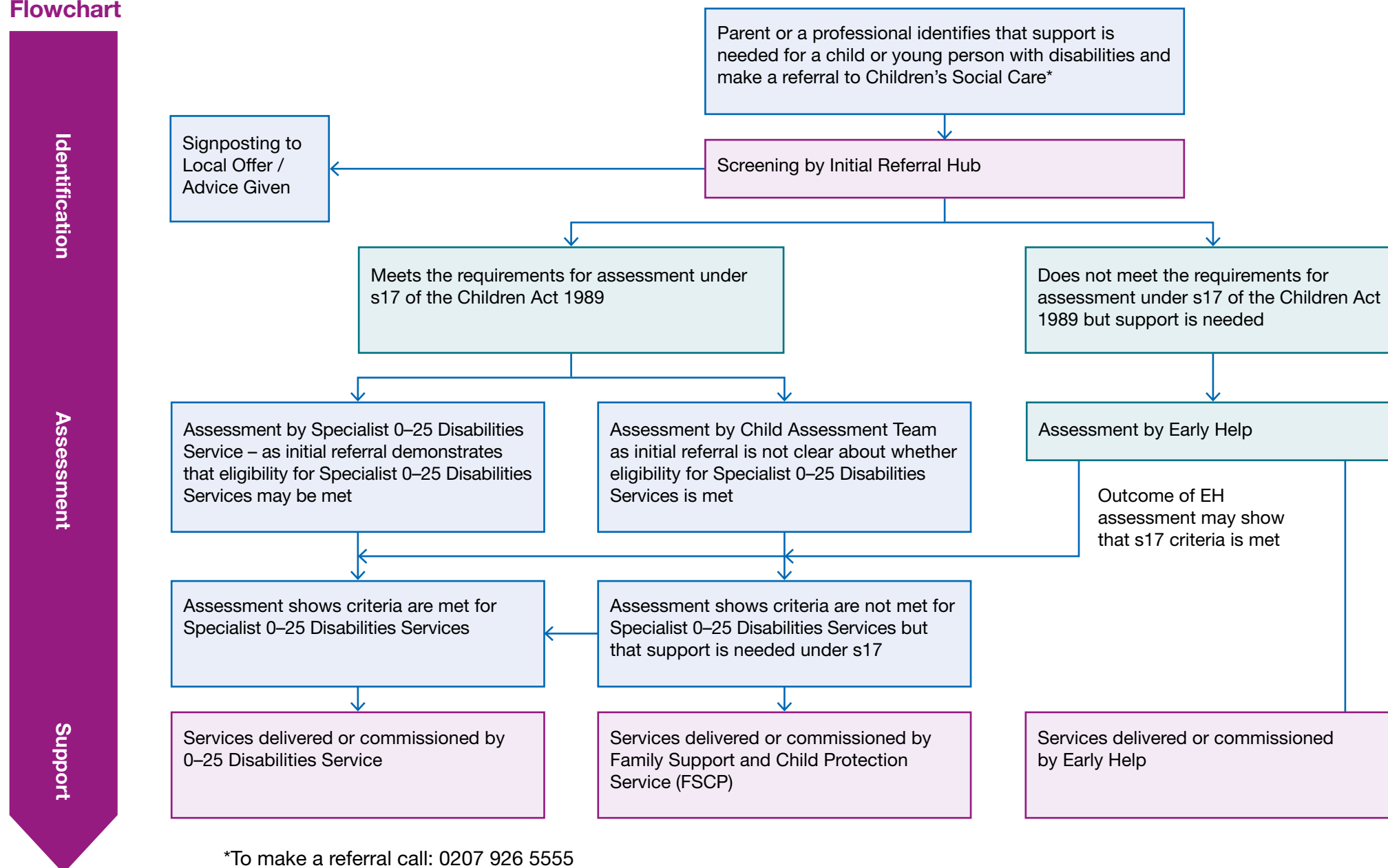
Where a young person is 18 years of age or older and have not previously known to Lambeth Children's Services, they will be referred into Adult Social Care.

Assessment Process:

- **Assessment Process:** Parents/carers can initiate an assessment by calling the Initial Referral Hub or professionals can discuss referrals, which must be followed by a Multi-agency Referral Form (MARF).
- Children who have a referral into Children's Social Care will be assessed by a qualified Social Worker using the **Child and Family Assessment**. This is an holistic approach which is used to assess the needs of the child and their family, considering health, development, disability, education, and other factors such as accommodation and sleeping arrangements.
- Where the family is referred to our Early Help Service, the child's needs will be assessed using an Early Help Assessment.
- **Involvement in Assessment:** The process involves the child, those caring for them, and other significant persons, with the social worker or Early Help Practitioner possibly requesting evidence such as doctor's letters or diagnoses. On average this assessment will take up to 45 working days to complete (but may be shorter).
- **Outcome of Assessment:** The assessment determines the level of need and support to be provided, and identifies the appropriate team to support the child/young person and their family.

This process ensures that the specific needs of children with disabilities and their families are properly understood and met.

Flowchart



*To make a referral call: 0207 926 5555

If you are a professional, please complete the multi-agency referral form and email it to helpandprotection@lambeth.gov.uk

Contact details:

- **Initial Referral Hub:** For referrals or to discuss a referral, call **0207 926 5555**.
- **Email:** For professionals making a referral, send the Multi-agency Referral Form (MARF) to: helpandprotection@lambeth.gov.uk
- **Complaints:** If you're not satisfied with the assessment or services, complete the online complaint form or contact **020 7926 9777** or CBSTeam@lambeth.gov.uk
- **SEND Information and Advice Support Service (IASS):** For impartial and confidential advice, visit the Lambeth Council website or contact the service directly for support with SEN, EHCP applications, and more. The service operates independently of other council services.

Contact details for the SEND IASS service are

Email: lambethiass@lambeth.gov.uk

Phone: 020 7926 9805 or 020 7926 1831

Website: www.lambethiass.org.uk

Please note that these contacts are specific to the London Borough of Lambeth and may vary for different locations. If you have any concerns, it's best to speak to the appropriate member of staff as soon as possible.

Please click on the following link to give us your feedback -
[Children's Social Care - Children and Family Feedback](#)