



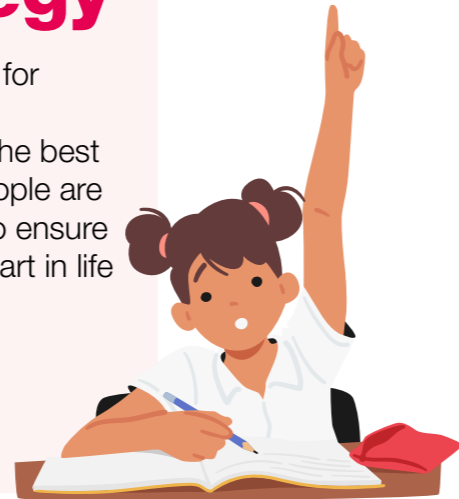
Strategy Summary

About our Education and Learning strategy

In Lambeth, we have a clear vision and bold ambitions for 2030, as set out in our borough plan Lambeth 2030:

Our Future, Our Lambeth. We want Lambeth to be the best place to grow up and age well. Children and young people are at the heart of what we want to achieve, as we strive to ensure that all children and young people can have the best start in life and feel safe and thrive in a place of opportunity.

The Education and Learning Strategy is a key part of delivering this ambition.



Our pillars

Our strategy identifies **four pillars** at the foundation of our vision.

These pillars describe what we mean by excellence and inclusion in Lambeth:

1. All children and young people in Lambeth are safe and healthy.
2. All children will start their learning experiences at the earliest opportunity and receive suitable, fulltime education throughout their education journey.
3. All children and young people will have access to excellent, high performing, efficient and inclusive educational settings.
4. All children and young people will have the opportunities, qualifications, skills, and attributes to live independent and successful lives, and contribute positively to their communities.



Our vision

Our strategy is driven by a clear, shared vision for all children and young people in Lambeth:

Excellent and inclusive education and learning for everyone, from birth to adulthood.

This vision underpins all the different areas of work across the borough to support the experiences of our learners, from Special Education Needs and Disability and Alternative Education Provision to Early Years and Pupil Place Planning.



Our priorities

Our strategy identifies **nine priorities** to drive change.

These priorities are where we will focus our energy together to meet our 2030 ambitions:

1. High performing schools and early years settings
2. Early and best start to education
3. Efficient schools
4. Post 16 and post 18 employment education and skills
5. A zero permanent exclusion borough
6. An inclusive education for those with SEND
7. Good school attendance and a safe place for everyone
8. Removing educational inequality and disadvantage in attainment
9. Staff and governors career and leadership Development





Strategy Summary

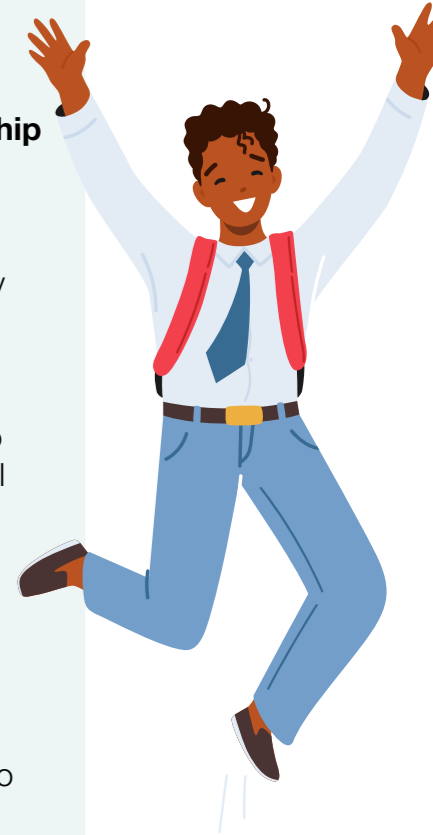
Measuring our impact

Our strategy sets out the **measures** we will use to know we are making an impact and delivering across each of our priorities.

These measures will be monitored through regular reporting to the Council's Overview and Scrutiny Committee, Children's Services Improvement Board and Lambeth Schools Partnership so we know where we are successful and where we need to improve as we work together over the next 6 years.

By 2030, we will achieve:

- 100% good and outstanding schools and early years settings
- 100% of pupils can read fluently
- Primary aged pupils achieve above statistical neighbours in phonics, FSP, Key Stage 1 and 2
- Key Stage 4 (Year 11) outcomes in the top quartile of statistical neighbours
- Closed achievement gap between Black Caribbean, Portuguese, Spanish speaking, and early stage EAL speakers achievement in line with peers
- 96%+ attendance in primary and secondary schools
- 90%+ early years participation for 2 and 3 year olds
- 100% good and outstanding early years providers
- Less than 10% surplus school places
- No schools carrying licensed deficits
- All secondary schools to achieve the Quality Careers Awards
- Zero Permanent Exclusions
- Suspensions less than 2% of the pupil population
- Early intervention Outreach SEND Service and Support reduce non-qualifying Education, Health and Care Plan applications
- 40% of new headteachers and governor appointments are of Black African or Caribbean heritage



Our partnership

Our strategy has been developed in **partnership between our schools, other educational settings, and the council.** The roles and responsibilities of the council include working positively with maintained faith and community schools, alternative education provision, early years settings, special schools, academies, free schools, sponsors, independent schools and further and adult education providers who comprise a part of the mixed economy of local education provision.

We will continue to collaborate to deliver the strategy through:

- **Lambeth Schools Partnership:** The Lambeth Schools Partnership is a collaboration between the local authority, schools and settings to take responsibility to improve standards across the borough.
- **School cluster working:** Lambeth has a well-established network of school clusters which work together to create self-sustaining support systems
- **Teaching school participation:** Lambeth partners with the London South Teaching School Hub to support the development and training of effective school leaders.

For more information, [visit our website](#) or get in touch via lambethschoolservices@lambeth.gov.uk.

