



The Children’s JSNA in Lambeth



Provides information on the health and well being of children and young people in the borough



Helps service providers, frontline staff and strategic directors to focus their work those most in need

This JSNA Summary



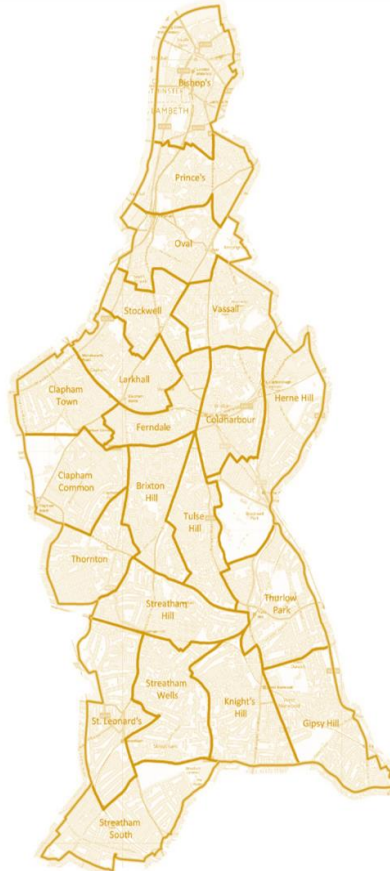
Gives a brief overview of demographic characteristics in the borough



Identifies the areas in Lambeth that are the highest priorities from a public health perspective



You can read the full JSNA [here](#)



Demography



35485 (21%) of Lambeth residents are under 20
51 % are boys, and 49 % are girls



In 2017, 4,711 babies are expected to be born in Lambeth. The birth rate is projected to go up by 2% in 2027



The under 20 population will grow by 3% to 36,651 by 2027



64 % of under 20s have a non-white background. Black African (18%) and children with mixed background (17%)

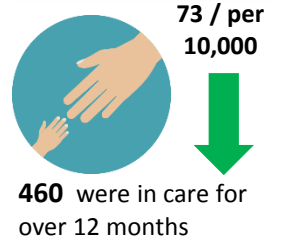
Child poverty



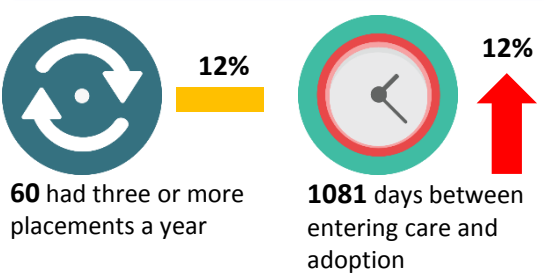
In 2014, 28% of children under 20 lived in poverty. The indicator is not updated anymore.

Looked after children

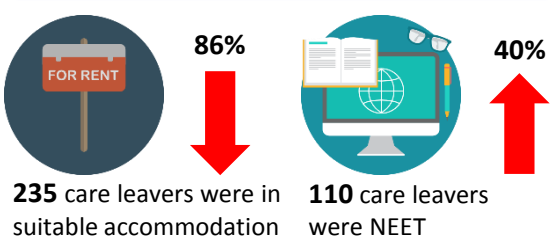
In care



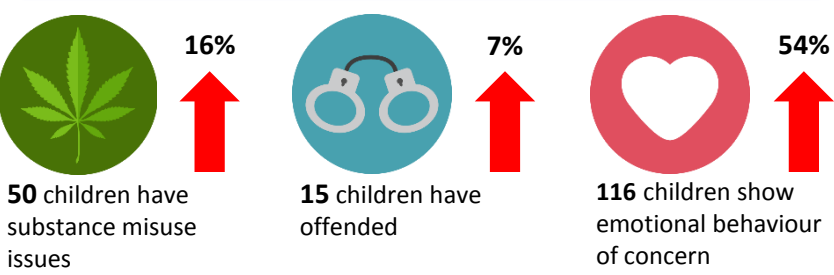
Placement stability



Care leavers

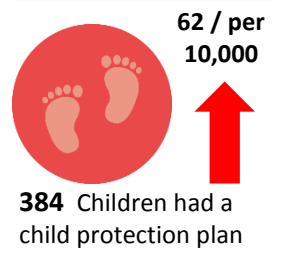


Risky behaviour

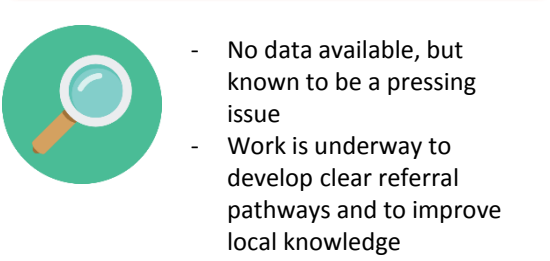


Safe-guarding

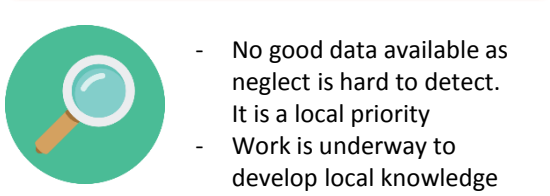
Social care



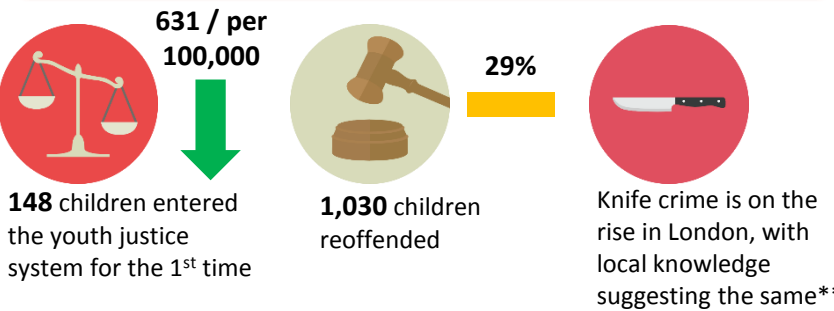
Child sexual exploitation



Neglect

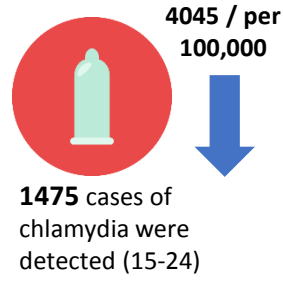


Youth violence

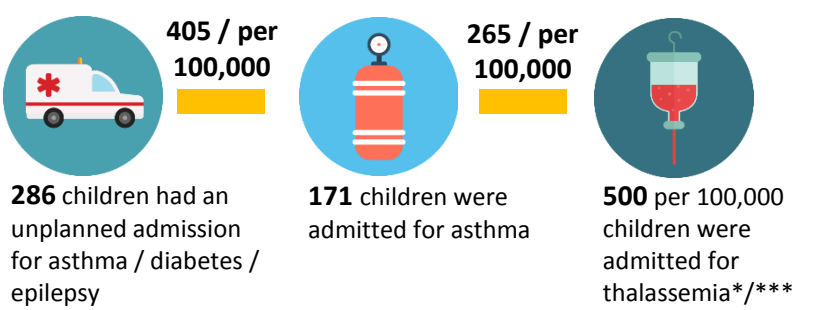


Other areas

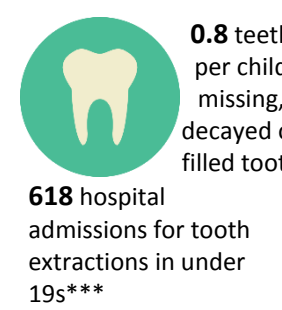
Sexual health



Long term conditions



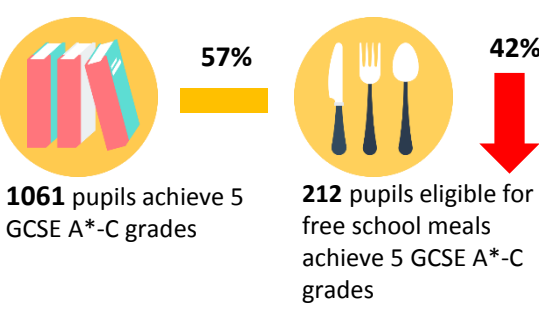
Oral health



Mental health



Education



*local priority **no local data available ***no trend data