

Lambeth Joint Strategic Needs Assessment

An update

October 2012

DRAFT

Foreword

Health and wellbeing of the local population is always at the heart of our professional service in the National Health Service as well as the Local authority. Our public health professionals are constantly working towards promoting and securing the health and wellbeing of our residents by using various tools and techniques such as the Joint Strategic Needs Assessment (JSNA) in order to achieve improved outcomes with regard to population's health and wellbeing.

In Lambeth, we have continued to develop our Joint Strategic Needs Assessment and over the years have provided support to commissioners in various ways by using the appropriate tools and techniques. Producing a JSNA is a statutory requirement and the Health and Social Care Act 2012 emphasises the need to produce a JSNA to support the development of a Health and Wellbeing Strategy for Lambeth.

JSNA is a process and not a product on its own; and Lambeth has produced a suite of documents to support this process which has fed directly in development of local strategies. This document goes on to discuss all the work done since 2007 to date, and also discusses our plans going forward beyond 1 April 2013 when Local Authorities take over the public health function statutorily from the Primary Care Trusts. Our JSNA work will feed directly into the development of our Health and Wellbeing Strategy due to be published early next year.

This document is not a technical document but an update to provide information on the status of JSNA in Lambeth and provides links to JSNA technical documents published so far. We hope that this document will provide an update with regard to JSNA governance arrangements, bring together all the JSNA products, and discuss our current and future approach with regard to JSNA outputs that will directly feed into local strategic prioritization. We hope you find this informative and useful.

Thank you.

Dr. Ruth Wallis

Director of Public health – Lambeth & Southwark

October 2012

INDEX

1. Introduction	5
2. Process & Governance.....	6
3. Output / Publications	7
4. Current and future approach.....	8
5. Appendix.....	9
Appendix 1 - JSNA summary template.....	9
Appendix 2 – Framework for JSNA and H&WB Strategy	10

DRAFT

1. Introduction

Health and Social Care Act 2012 have awarded Health and Wellbeing Boards (H&WBB) with two core responsibilities which include – preparing Joint Strategic Needs Assessment (JSNA) and developing a Joint Health and Wellbeing Strategy with the purpose of improving services for the whole community, so individuals and communities are able to live healthier lives and have better experience of the health and care system. Section 116 of the Local Government and Public Involvement in Health Act 2007 was amended to include Clinical Commissioning Groups and National Health Service Commissioning Board as partners who alongside the responsible local authority, must publish an assessment of relevant needs and a Health and wellbeing strategy (JHWBS). Details are available here

<http://www.legislation.gov.uk/ukpga/2012/7/part/5/chapter/2/crossheading/joint-strategic-needs-assessments-and-strategies/enacted> and here

<http://www.legislation.gov.uk/ukpga/2012/7/part/5/chapter/2/crossheading/health-and-wellbeing-boards-establishment/enacted>

The Department of Health (DH) guidance on JSNAs and Joint Health and wellbeing strategies – *Commissioning for populations* states that *Liberating the NHS – Legislative Framework and Next Steps*¹; *Healthy Lives, Healthy People*² and *Capable Communities and Active Citizens*³ set out the government's ambition for an enhanced role for joint strategic needs assessments (JSNAs). This strengthened role of JSNAs and joint health and wellbeing strategies will enable Local Councillors, GPs and Directors of Public Health, Adult and Children's services to work with their communities in leading a more effective and responsive local health and care system. They will sit at the heart of local commissioning decisions, underpinning improved health, social care and public health outcomes for the whole community. The guidance states that JSNAs and H&WBS are foundations upon which H&WB Boards exercise their shared leadership across the wider determinants that influence improved health and wellbeing such as housing and education. See http://www.dh.gov.uk/en/Publicationsandstatistics/Publications/PublicationsPolicyAndGuidance/DH_131702

The purpose of a JSNA is to present an understanding of health and service needs within a community, which can be addressed through strategies such as the H&WB Strategy that will enable commissioners to plan and commission integrated services that meet the needs of the whole community, in particular the most vulnerable groups, to ensure reduction in health inequalities and maximizing outcomes achievement for improvement of health and wellbeing in the population. JSNA is a process with a defined methodology that brings together several pieces of work including local health statistics, assessment of local service provision, capacity estimation, views of patients and public through

community engagement, asset assessment, outcomes analysis etc., that help in presenting a picture of health and wellbeing needs of the local population as well as gaps in knowledge and information which when combined with evidence on most cost-effective interventions can provide recommendations that can be prioritised through the Health and Wellbeing strategy. Prioritisation process can either be conducted as a part of the JSNA or outside of the JSNA and this forms an important component of development of H&WB strategy. To date, JSNAs have supported development of PCT's (Primary Care Trusts') Commissioning Strategies as well as Local Authority's strategies. In the future, JSNAs will continue to provide evidence base for developing such strategies in addition to the overarching Joint Health & Wellbeing Strategy.

Lambeth JSNA is a collation of various products such as HNAs, Health equity audits (HEA), statistical bulletins, Health profiles, Local surveys, Service reviews, Practice profiles, etc. as detailed in [section 4](#). JSNA process is cyclical and subject to local governance mechanisms. The JSNA process in Lambeth is described in detail in the next chapter.

2. Process & Governance

Lambeth has come a long way since October 2007 with regard to developing a JSNA through a joint framework and governance. Various JSNA products published since then have supported development of strategies in the National Health Service as well as the Local Authority. As part of the JSNA suite of documents published in 2009, Volume II: Appendix 1&2 describes the process undertaken. This document is available here <http://www.lambethfirst.org.uk/jsna>. Lambeth's JSNA suite of documents can also be found at the above link.

A robust governance process since 2007-08 led by the Director of Public Health, Director of Adult & Social Services and Director of Children and Young People's services in Lambeth ensured that a JSNA project plan led the way through defined milestones to develop a product that was useful to support the development of strategies in Health service and social care over 2009-10 and thereon.

The passing of Health and Social Care Act, 2012 has led to the development of a shadow Health and Wellbeing Board in Lambeth with representation from the Lambeth Clinical Commissioning Group (under authorization), Lambeth Council and also includes representation from the King's health partners and the public. Further details can be found here <http://www.lambeth.gov.uk/moderngov/mgCommitteeDetails.aspx?ID=648>. The H&WB Board membership details can be found here <http://www.lambeth.gov.uk/moderngov/mgCommitteeMailingList.aspx?ID=648>.

The shadow H&WB Board is providing local leadership for the development of the JSNA and the H&WB strategy for Lambeth. At present a core working group is overseeing the development of H&WB Strategy which is due to be formally published in March 2013 after formal consultation with stakeholders to ensure co-production - which is an important feature of the new co-operative council agenda of

Lambeth Council. Updating JSNA documentation as required is underway in parallel to production of the H&WB strategy. The next section discusses all the JSNA productions in Lambeth so far.

3. Output / Publications

Since 2007 Lambeth has produced a range of documents in support of the local JSNA process through a robust governance mechanism. The various documents produced have directly contributed to the prioritisation process within the Health service and has led to supporting the development of Strategies within both the council and the NHS.

In November 2008, Lambeth's first preliminary assessment (JSNA) was published which provided a good assessment of health needs against outcomes and covered health as well as the wider determinants of health in assessing local needs in relation to services. This followed a robust governance project and was managed through Lambeth's first JSNA project plan developed in June 2008. Lambeth was one of the very few pioneers in development of JSNA process and methodology ahead of several boroughs in the country.

2009 saw Lambeth's JSNA evolve much further with production of a suite of documents which contributed to prioritisation and development of strategies in the National Health Services as well as the Council. These publications can be accessed from <http://www.lambethfirst.org.uk/jsna>. A quality assurance process also formed part of the 2009 JSNA work. Ward profiles, service mapping and resource allocation, Workshops output are important contributory documents in this JSNA along with the main JSNA report.

To support Public health and commissioning staff in supporting the development of the JSNA, Lambeth produced a *'Pre-needs Assessment Guidance and Tools'* and *'Needs Assessment Summary Report – Template'*. These documents were found to be very helpful to the commissioners as well as public health professionals in contributing to the JSNA process; since each Health Needs Assessment (HNA) is in an integral part of the overall JSNA process.

Over 2010 and 2011 Lambeth public health continued to update and support the JSNA process by conducting several needs assessments, health equity audits, and profiles. All the above mentioned documents can be found at the link below - http://www.selondon.nhs.uk/your_local_nhs/lambeth/your_health/joint_strategic_needs_assessment All National profiles published by Association of Public Health Observatories (APHO) at Lambeth level are also provided at the link above. These profiles provide a useful snapshot and summary to public health professionals as well as commissioners.

A *'Public Health Statistical Bulletin'* published annually is an important information evidence base that presents Lambeth's performance against outcomes. The latest 'Public health Statistical bulletin' was refreshed, updated and published in 2011. Lambeth routinely produces *'Practice Profiles'* every year to

facilitate clinical commissioning and these are considered an integral part of the JSNA. The latest Practice Profile was published in 2011 after release of the QOF – Quality and outcomes framework performance data by the NHS Information Centre.

Local Government's IDeA – Improvement and Development Agency in their publication *Joint strategic Needs Assessment: A springboard for action* published in April 2011 quoted Lambeth's approach and JSNA methodology as an example of good practice. This document is available at http://www.local.gov.uk/c/document_library/get_file?uuid=83c91c20-3f1b-4c43-8ca7-b2b9b5c0ad16&groupId=10171

4. Current and future approach

Lambeth's vision is to continue improving the health and well-being of local population at a faster rate by targeting those communities at highest risk of poor outcomes to address inequalities; while involving partners in decision making and commissioning highest quality services.

The aim is to continue to use Lambeth's methodology in carrying out JSNA by promoting the use of tools and guidance produced locally to support local health and social care professionals. A 'Health profile and outcomes review' document will be published in November 2012, which will be an important component of the JSNA.

A 'JSNA summary template' (Appendix 1) has been produced to present a concise picture of need with regard to an area of work and this will also provide key recommendations for commissioners to consider during prioritisation and development of strategy. This template will include a summary on views of patients and public in relation to the area under consideration. The added benefit of this template is that it will provide links to evidence and best practice including NICE recommendations where available. This template will also provide a list of priorities for improvement over 5-10 years. This template will need to be completed jointly by various stakeholders and will be an important component of the JSNA process. Completed templates will be published online as soon as they are produced.

A framework to understand population health needs has been devised and approved in September 2012 (Appendix 2). Preliminary findings from Lambeth's JSNA in the form of slides that present a summary of the health profile of the population have been drafted which are feeding information directly in the development of the Health and Wellbeing strategy. This slide set will be utilised during consultation sessions with patients and public and will also be included in Lambeth's H&WB Strategy. This slide set will be made available online once complete.

Beyond April 2013, Public health staff in the Local Authority will continue to drive this process by engaging partners and professionals in adopting the JSNA methodology while undertaking local work such as development of strategies. The aim is to make JSNA a process that is initiated, driven, conducted and evaluated jointly by commissioners, public health professionals as well as stakeholders to maximise

outputs. H&WB Board will continue to be the governing body while an Executive group will be set up to oversee the JSNA functions. Partnership working will continue between the local NHS, King’s Health Partners, *Health watch* and the Local authority teams.

5. Appendix

Appendix 1 - JSNA summary template.

Lambeth Joint Strategic Needs Assessment: 2012

<Area of work>

Executive Summary / Key messages

-
-
-
-
-
-

Background/Local picture

-

Services commissioned to address this issue

-

Views of patients/public on services

-

Evidence and best practice

-

Outcomes/Performance

-

Gaps in knowledge and information

-

Priorities for improvement (5-10 years)

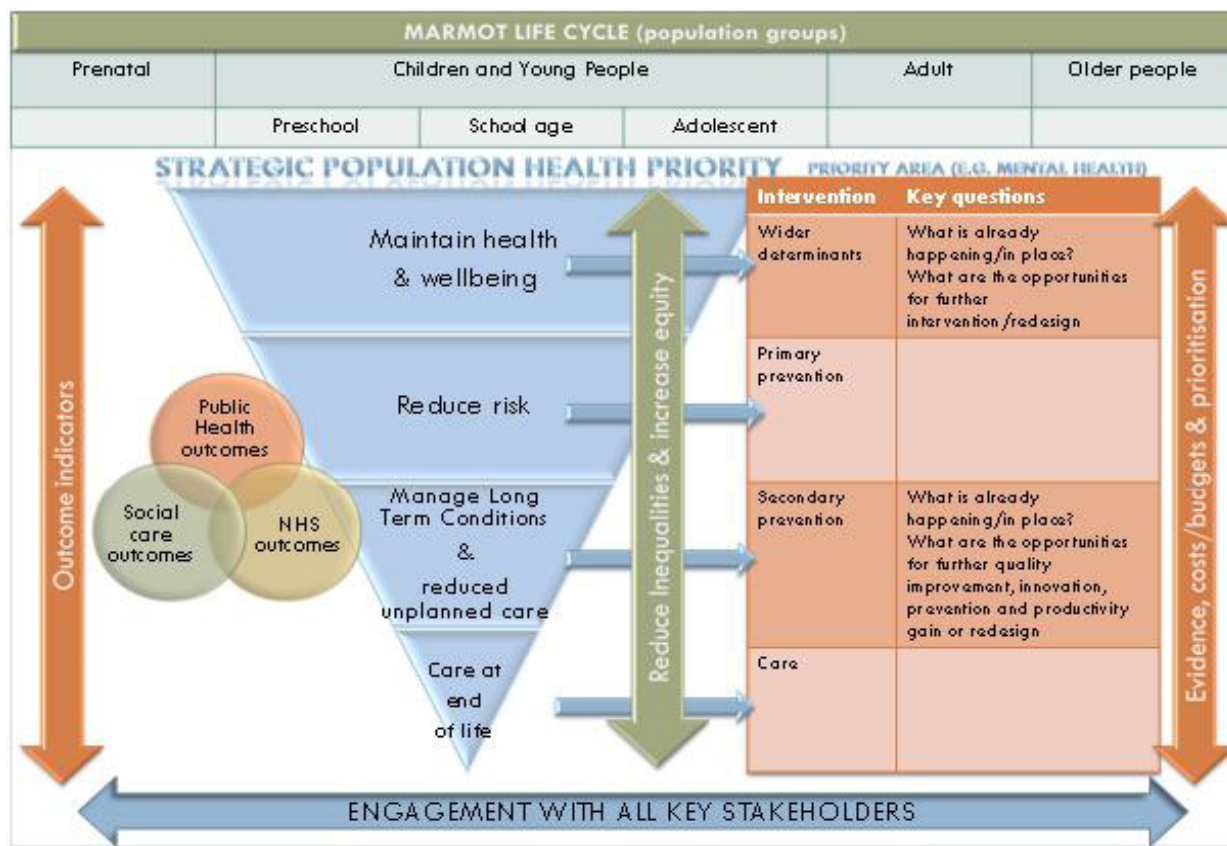
-

Actions

-

Contact

Appendix 2 – Framework for JSNA and H&WB Strategy



Useful links

<http://www.lambeth.gov.uk/moderngov/mgCommitteeDetails.aspx?ID=648>

<http://www.lambethfirst.org.uk/jsna>

<http://www.selondon.nhs.uk/your-local-nhs/lambeth/your-health/joint-strategic-needs-assessment>

<http://webarchive.lambethpct.nhs.uk/health-in-lambeth/health-profile/ward-profiles-2010>

Contact

For further information regarding this document or its content, please send an email to Lambeth Public Health Directorate at ash.more@lambethpct.nhs.uk or hiten.dodhia@lambethpct.nhs.uk