

Lambeth Commercial Development  
Pipeline Report 2010/2011



## Contents

	<b>Page</b>
<b>Introduction</b>	<b>1</b>
<b>Summary of Key Findings</b>	<b>4</b>
<b>Commentary</b>	<b>5</b>
<b>Commercial Development Pipeline Summary Tables</b>	
<b>Section A: Completions</b>	
• Table 1. Summary of Completed 'B' Class Floorspace by Use Class 2010/2011	<b>6</b>
• Table 2. Summary of Completed 'B' Class Floorspace by Development Type 2010/2011	<b>6</b>
• Table 3. Summary of Completed 'B' Class Floorspace by KIBA/Non KIBA 2010/2011	<b>7</b>
• Table 4. 'B' Class Floorspace Lost to Completed Residential Developments 2010/2011	<b>7</b>
• Table 5. Completed 'B' Class Floorspace by Ward 2010/2011	<b>8</b>
• Table 6. Rolling Summary of Completed 'B' Class Floorspace 2005-2011	<b>9</b>
• Chart 1. Rolling Summary of Completed 'B' Class Floorspace 2005-2011	<b>10</b>
<b>Section B: Under Construction</b>	
• Table 7. Summary of 'B' Class Floorspace Under Construction 2010/2011	<b>11</b>
• Table 8. Summary of 'B' Class floorspace Under Construction by KIBA/Non KIBA 2010/2011	<b>11</b>
• Chart 2. 'B' Class Floorspace Under Construction 2010/2011	<b>12</b>
• Table 9. Rolling Summary of Under Construction 'B' Class Floorspace 2005-2011	<b>13</b>
• Chart 3. Rolling Summary of Under Construction 'B' Class Floorspace 2005-2011	<b>14</b>
• Table 10. 'B' Class Floorspace Under Construction by Ward 2010/2011	<b>15</b>
<b>Section C: Unimplemented Permissions</b>	
• Table 11. Summary of 'B' Class Floorspace Unimplemented Permissions 2010/2011	<b>16</b>
• Table 12. Summary of 'B' Class Floorspace Unimplemented Permissions within KIBAs 2010/2011	<b>16</b>
• Table 13. 'B' Class Floorspace Unimplemented Permissions by Ward 2010/2011	<b>17</b>
• Chart 4. 'B' Class Floorspace Unimplemented Permissions 2010/2011	<b>18</b>
• Table 14. Rolling Summary of Unimplemented 'B' Class Floorspace 2005-2011	<b>19</b>
• Chart 5. Rolling Summary of Unimplemented 'B' Class Floorspace 2005-2011	<b>20</b>
<b>Section D: Historical Approvals</b>	
• Table 15. Rolling Summary of 'B' Class Floorspace Permissions Granted 2005-2011	<b>21</b>
• Chart 6. Rolling Summary of 'B' Class Floorspace Permissions Granted 2005-2011	<b>22</b>

- Table 16. Rolling Summary of 'B' Class Floorspace Permissions Granted Within KIBAs 2005-2011 **23**
- Chart 7. Rolling Summary of 'B' Class Floorspace Permissions Granted Within KIBAs 2005-2011 **24**

### **Schedules**

- Table 17. 'B' Class Floorspace Completed 2010/2011 **25**
- Table 18. 'B' Class Floorspace Under Construction 2010/2011 **32**
- Table 19. 'B' Class Floorspace Unimplemented Permissions 2010/2011 **40**

## **Introduction**

This is the London Borough of Lambeth's fourth Commercial Development Pipeline Report. It provides data on changes in the supply of Lambeth's commercial floorspace between 1 April 2010 and 31 March 2011, focusing particularly on 'B' use classes. The report is organised by listing and summarising all changes in the supply of 'B' use class floorspace from planning applications, looking at new build and changes of use of properties in Lambeth that were completed, under construction or had valid planning permissions for the 2010/2011 financial year. It also includes changes in previous years in rolling summary tables taking in financial years 2005/2006, 2006/2007, 2007/2008 and 2008/2009. The information in this report is presented in a series of summary tables and then lists the sites individually in schedules under the various categories of the development pipeline.

Information on developments starts and completions was obtained from Building Control records and site visits.

All sites in the schedules are listed alphabetically by street and then number.

If you have any questions or require any further information please contact the Planning Information and Research Officer Edd Rowe on 020 79261259 or [erowe@lambeth.gov.uk](mailto:erowe@lambeth.gov.uk).

## **Explanations and Abbreviations Used**

### **Use Classes**

This report concentrates on use classes B1a, B1b, B1c, B2 and B8.

B1a = Offices

B1b = Research and Development, Studios, Laboratories

B1c = Light Industry

B2 = General Industry

B8 = Storage and Distribution

In the schedules the category 'Other' includes use classes:

A1 = Shops

A2 = Financial and Professional Services

A3 = Restaurants and Cafes

A4 = Drinking Establishments

A5 = Hot food Takeaways

C1= Hotels

D1 = Non-residential Institutions

D2 = Assembly and Leisure

Sui Generis = use not within a specific use class

'Other' does not include residential development which include use classes C2, C3 and C4.

### **Metres Squared and Gross Internal Floorspace**

All measurements unless otherwise stated are in metres squared (m<sup>2</sup>). All measurements are of gross internal floorspace which is the internal area of the building, and includes circulation and service space such as lifts and floorspace devoted to corridors, toilets, storage, etc. It does not include any area external to the building(s).

## Existing, Gross and Net

As used in the summary tables and schedules, 'Existing' refers to the amount of floorspace prior to development, 'Gross' refers to the total amount of floorspace after development and 'Net' details the overall change in the amount of floorspace lost or gained.

## KIBAs

Key Industrial Business Areas (KIBAs) are Lambeth's 'Locally Significant Industrial Sites', as defined in the London Plan and are important employment generating areas in Lambeth. KIBA sites are afforded additional protection through their designation in the Core Strategy (Policy S3) and are safeguarded for business, industrial, storage and waste management uses including green industries and other compatible commercial uses, excluding large scale retail.

## Ward Abbreviations

Abbreviations used for wards in the schedules are as follows:

Bishops	B	Larkhall	L
Brixton Hill	BH	Oval	O
Clapham Common	CC	Princes	P
Clapham Town	CT	St Leonards	SL
Coldharbour	C	Stockwell	S
Ferndale	F	Streatham Hill	SH
Gipsy Hill	GH	Streatham South	SS
Herne Hill	HH	Streatham Wells	SW
Knights Hill	KH	Thornton	T

## Summary of Key Findings

- 13,476m<sup>2</sup> gross business (B) class floorspace was completed in 2010/2011. However this equates to an overall total net loss of 23,099m<sup>2</sup> 'B' class floorspace.
- The majority of completed floorspace in 2010/2011 was for B1a (office) use totalling 11,498m<sup>2</sup> (gross), which accounts for 85% of gross completed 'B' class floorspace.
- Completions data for 2010/2011 shows an overall net loss across all 'B' use classes.
- Completed 'B' class floorspace (gross) within KIBAs accounts for 90% of total completed 'B' class floorspace (gross) in Lambeth during 2009/2010.
- Five schemes involving a net loss of 'B' class floorspace to residential were completed during the monitoring year. Together these amounted to a net loss of 19,641m<sup>2</sup> of 'B' class floorspace. Only one scheme, involving a loss of 18,172m<sup>2</sup> floorspace, was within a KIBA. This was the scheme at the former Freemans site, 131-143 Clapham Road.
- Overall there is 162,841m<sup>2</sup> gross 'B' class floorspace currently under construction in the borough, which will result in a net gain of 48,254m<sup>2</sup>. This compares with 171,067m<sup>2</sup> gross and 57,858m<sup>2</sup> net under construction in 2009/2010.
- 94% of this is outside of KIBAs with 152,558m<sup>2</sup> of 'B' class floorspace under construction, which will result in an overall net gain of 45,905m<sup>2</sup>.
- Within KIBAs there were 10,283m<sup>2</sup> of 'B' class floorspace under construction, which will result in an overall net gain of 2,349m<sup>2</sup>.
- In total there was 89,662m<sup>2</sup> gross 'B' class floorspace with valid but as yet unimplemented planning permissions; this would result in a net gain of 2,586m<sup>2</sup>. This compares with 104,923m<sup>2</sup> gross and a net loss of 6,031m<sup>2</sup> in 2009/2010 of unimplemented permissions.
- In 2010/2011 there were 47 applications approved that involved changes in 'B' class floorspace, resulting in a net loss of 19,653m<sup>2</sup>. This compares to 52 applications resulting in a net gain of 40,805m<sup>2</sup> in 2008/2009, 61 applications resulting in a net gain of 26,434m<sup>2</sup> in 2007/2008, 72 applications resulting in a net gain of 27,799m<sup>2</sup> in 2006/2007, 84 applications resulting in a net loss of 17,090m<sup>2</sup> in 2005/2006 and in 2009/2010 28 applications resulting in a net loss of 13,597m<sup>2</sup>.
- B1a gross completions dropped from 26,330m<sup>2</sup> in 2009/2010 to 11,498m<sup>2</sup> in 2010/2011.
- The summary of B1a under-construction should be treated with caution as the figures are distorted by the Shell Centre (34,837 m<sup>2</sup>) and Elizabeth House (61,794m<sup>2</sup> net B1a) developments. Both of these schemes are technically under-construction but not expected to be progressed through to completion.
- In 2009/2010 no B1c floorspace was completed compared to three schemes that were built out to provide 1,207m<sup>2</sup> B1c floorspace in 2009/2010.
- B8 completions dropped from 2,965 m<sup>2</sup> in 2009/2010 to 1,978m<sup>2</sup> in 2010/2011.

## Commercial Development Pipeline Commentary

The commercial development pipeline in Lambeth in 2010/2011 was in various respects at or near an all time low since 2005/2006 when monitoring started.

- Gross overall completions were the second lowest (Table 6) including B1a (offices) and B8 (warehousing) with no B1c (light industry) or B2 (general industry) completions.
- In the case of B2 (general industry) this was the third year running that there were zero completions. In the case of B1c (light industry) this was the second time in the last three years.
- The B1a (offices) gross floorspace pipeline was quite substantial (Table 7) at just under 160,000 sq metres, but this was overwhelmingly (95%) located outside KIBAs.
- There was no B2 (general industry) or B8 (warehousing) under construction and B1c (light industry) was almost evenly split between KIBA and non-KIBA locations.
- This position is reinforced by the level of planning permissions granted in 2010/2011: the gross total is the lowest in the six years that monitoring has been carried out (since 2005/2006) totalling just under 13,000 sq metres. Of this over 80% was for B1a (offices) and a further 14% was for B8 (warehousing). Only 242 sq metres B1c (light industry) was approved (Table 15).
- Unimplemented permissions totalled just under 90,000 sq metres gross (Table 11), with nearly 90% of this outside KIBA areas (Table 12).

These figures highlight the importance of non-KIBA areas in the borough for new business floorspace supply.



## Commercial Development Pipeline Summary Tables

### Section A. Completions

**Table 1.** Summary of Completed 'B' Class Floorspace by Use Class 2010/2011

Use Class	No. of Permissions	Existing	Gross	Net
B1a	14	19,172	11,498	-7,674
B1b	1	100	0	-100
B1c	2	1,753	0	-1,753
B2	3	1,071	0	-1,071
B8	6	14,479	1,978	-12,501
<b>Total</b>	26	36,575	13,476	-23,099

**Table 2.** Summary of Completed 'B' Class Floorspace by Development Type 2010/2011

Use Class	New Build			Change of Use			Total		
	Existing	Gross	Net	Existing	Gross	Net	Existing	Gross	Net
B1a	16,347	11,363	-4,984	2,825	135	-2,690	19,172	11,498	-7,674
B1b	0	0	0	100	0	-100	100	0	-100
B1c	0	0	0	1753	0	-1,753	1,753	0	-1,753
B2	817	0	-817	254	0	-254	1071	0	-1,071
B8	14,162	216	-13,946	317	1,762	1,445	14,479	1,978	-1,2501
<b>Total</b>	31,326	11,579	-19,747	5,249	1,897	-3,352	36,575	13,476	-23,099

All measurements are of gross internal floorspace in metres squared (m<sup>2</sup>)

**Table 3.** Summary of Completed 'B' Class Floorspace by KIBA/Non KIBA 2010/2011

Location	B1a			B1b			B1c		
	Existing	Gross	Net	Existing	Gross	Net	Existing	Gross	Net
Within KIBA	15,765	10,375	-5,390	0	0	0	1,631	0	-1,631
Outside KIBA	3,407	1123	-2,284	100	0	-100	122	0	-122
<b>Total</b>	19,172	11,498	-7,674	100	0	-100	1,753	0	-1,753
Location	B2			B8			Total		
	Existing	Gross	Net	Existing	Gross	Net	Existing	Gross	Net
Within KIBA	0	0	0	14,128	1,803	-12,325	31,524	12,178	-19,346
Outside KIBA	1,071	0	-1,071	351	175	-176	5,051	1,298	-3,753
<b>Total</b>	1,071	0	-1,071	14,479	1,978	-12,501	36,575	13,476	-23,099

**Table 4.** 'B' Class Floorspace Lost to Completed Residential Developments 2010/2011

Location	No. of Developments	Net Change					
		B1a	B1b	B1c	B2	B8	Total
Within KIBA	1	-4,044	0	0	0	-14,128	-18,172
Outside KIBA	5	-346	0	-122	-951	-50	-1,469
<b>Total</b>	6	-4,390	0	-122	-951	-14,178	-19,641

All measurements are of gross internal floorspace in metres squared (m<sup>2</sup>)

**Table 5. Completed 'B' Class Floorspace by Ward 2010/2011**

Ward	Existing						Gross						Net						
	B1a	B1b	B1c	B2	B8	Total	B1a	B1b	B1c	B2	B8	Total	B1a	B1b	B1c	B2	B8	Total	
<b>Bishops</b>	204	0	0	0	0	204	0	0	0	0	0	0	-204	0	0	0	0	0	-204
<b>Brixton Hill</b>	0	0	0	134	0	134	0	0	0	0	0	0	0	0	0	-134	0	0	-134
<b>Clapham Common</b>	0	0	0	120	0	120	0	0	0	0	0	0	0	0	0	0	0	0	0
<b>Clapham Town</b>	0	0	0	0	0	0	0	0	0	0	0	0	0	0	0	0	0	0	0
<b>Coldharbour</b>	378	0	0	0	0	378	0	0	0	0	0	0	-378	0	0	0	0	0	-378
<b>Ferndale</b>	0	100	0	0	0	100	0	0	0	0	0	0	0	-100	0	0	0	0	-100
<b>Gipsy Hill</b>	0	0	0	0	0	0	0	0	0	0	0	0	0	0	0	0	0	0	0
<b>Herne Hill</b>	217	0	0	0	0	217	130	0	0	0	0	130	-87	0	0	0	0	0	-87
<b>Knights Hill</b>	0	0	1631	0	0	1,631	291	0	0	0	1,803	2,094	291	0	-1,631	0	1803	463	
<b>Larkhall</b>	0	0	0	0	0	0	0	0	0	0	0	0	0	0	0	0	0	0	0
<b>Oval</b>	0	0	0	0	0	0	0	0	0	0	0	0	0	0	0	0	0	0	0
<b>Princes</b>	2,062	0	0	0	0	2,062	507	0	0	0	0	507	-1,555	0	0	0	0	0	-1,555
<b>St Leonards</b>	546	0	122	0	0	668	0	0	0	0	0	0	-546	0	-122	0	0	0	-668
<b>Stockwell</b>	0	0	0	817	0	817	351	0	0	0	0	0	351	0	0	-817	0	0	-466
<b>Streatham Hill</b>	0	0	0	0	0	0	0	0	0	0	0	0	0	0	0	0	0	0	0
<b>Streatham South</b>	0	0	0	0	0	0	0	0	0	0	0	0	0	0	0	0	0	0	0
<b>Streatham Wells</b>	0	0	0	0	215	215	0	0	0	0	175	175	0	0	0	0	0	-40	-40
<b>Thornton</b>	0	0	0	0	0	0	0	0	0	0	0	0	0	0	0	0	0	0	0
<b>Thurlow Park</b>	0	0	0	0	0	0	98	0	0	0	0	98	98	0	0	0	0	0	98
<b>Tulse Hill</b>	0	0	0	0	0	0	0	0	0	0	0	0	0	0	0	0	0	0	0
<b>Vassall</b>	15,765	0	0	0	14,128	29,893	10,121	0	0	0	0	10,121	-5,644	0	0	0	0	-14,264	-19,908
<b>Total</b>	19,172	100	1,753	1,071	14,343	36,439	11,498	0	0	0	1,978	13,125	-7,674	-100	-1,753	-951	-12,501	-22,979	

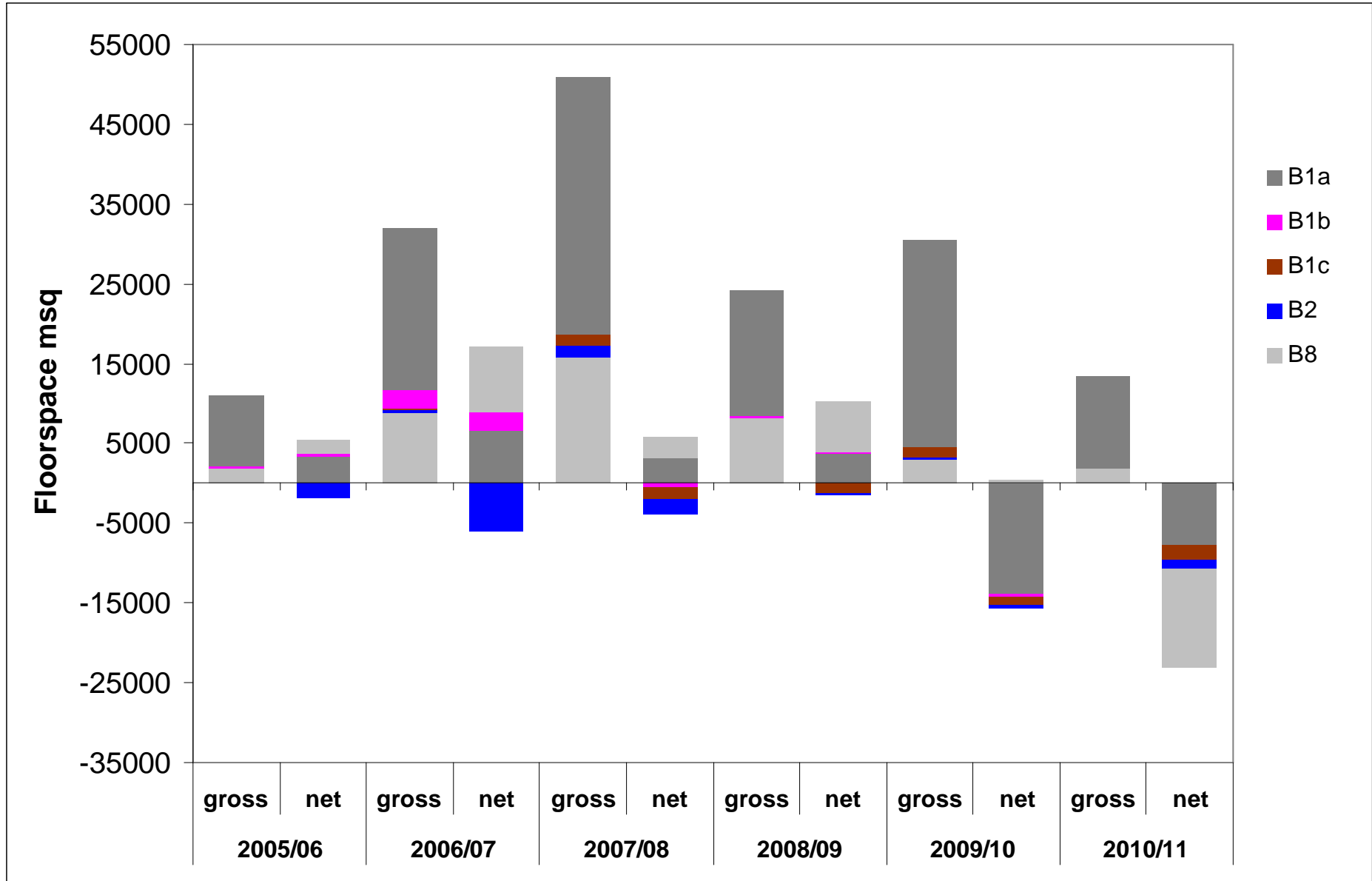
All measurements are of gross internal floorspace in metres squared (m<sup>2</sup>)

**Table 6.** Rolling Summary of Completed 'B' Class Floorspace 2005-2011

Year	B1a			B1b			B1c		
	Existing	Gross	Net	Existing	Gross	Net	Existing	Gross	Net
2005/06	5,364	8,845	3,481	0	240	240	0	0	0
2006/07	13,536	20,190	6,654	71	2,354	2,283	189	275	86
2007/08	28,938	32,238	3,300	492	0	-492	2,912	1,378	-1,534
2008/09	12,899	15,724	2,825	0	66	66	1,276	0	-1,279
2009/10	36,013	26,330	-9,683	393	82	-311	2,368	1,207	-1,161
2010/11	19,172	11,498	-7,674	100	0	-100	1,753	0	-1,753
<b>Total</b>	115,922	114,825	-1,097	1,056	2,742	1,686	8,498	2,860	-5,641
Year	B2			B8			Total		
	Existing	Gross	Net	Existing	Gross	Net	Existing	Gross	Net
2005/06	1,874	0	-1,874	177	1,874	1,697	7,415	10,959	3,544
2006/07	6,441	325	-6,116	790	8,823	8,033	21,027	31,967	10,940
2007/08	3,281	1,415	-1,866	13,308	15,837	2,529	48,931	50,868	1,937
2008/09	122	0	-122	1,887	8,319	6,432	19,187	24,109	7,922
2009/10	513	0	-513	2,508	2,965	457	41,795	30,584	-11,211
2010/11	1,071	0	-1,071	14,479	1,978	-12,501	36,575	13,476	-23,099
<b>Total</b>	13,302	1,740	-11,562	33,149	39,796	6,647	174,930	161,963	-9,967

All measurements are of gross internal floorspace in metres squared (m<sup>2</sup>)

**Chart 1. Rolling Summary of Completed 'B' Class Floorspace 2005-2011**



## Section B: Under Construction

**Table 7.** Summary of 'B' Class Floorspace Under Construction 2010/2011

Use Class	No. of Permissions	Existing	Gross	Net	Gross Excluding*	Net Excluding*
B1a	23	81,589	159,489	77,746	20,175	-18,885
B1b	3	253	490	237	490	237
B1c	6	1,339	2,862	1,523	2,862	1,523
B2	2	1,332	0	-1,332	0	-1,332
B8	6	29,920	0	-29,920	0	-29,920
<b>Total</b>	40	114,433	162,841	48,254	23,527	-48,377

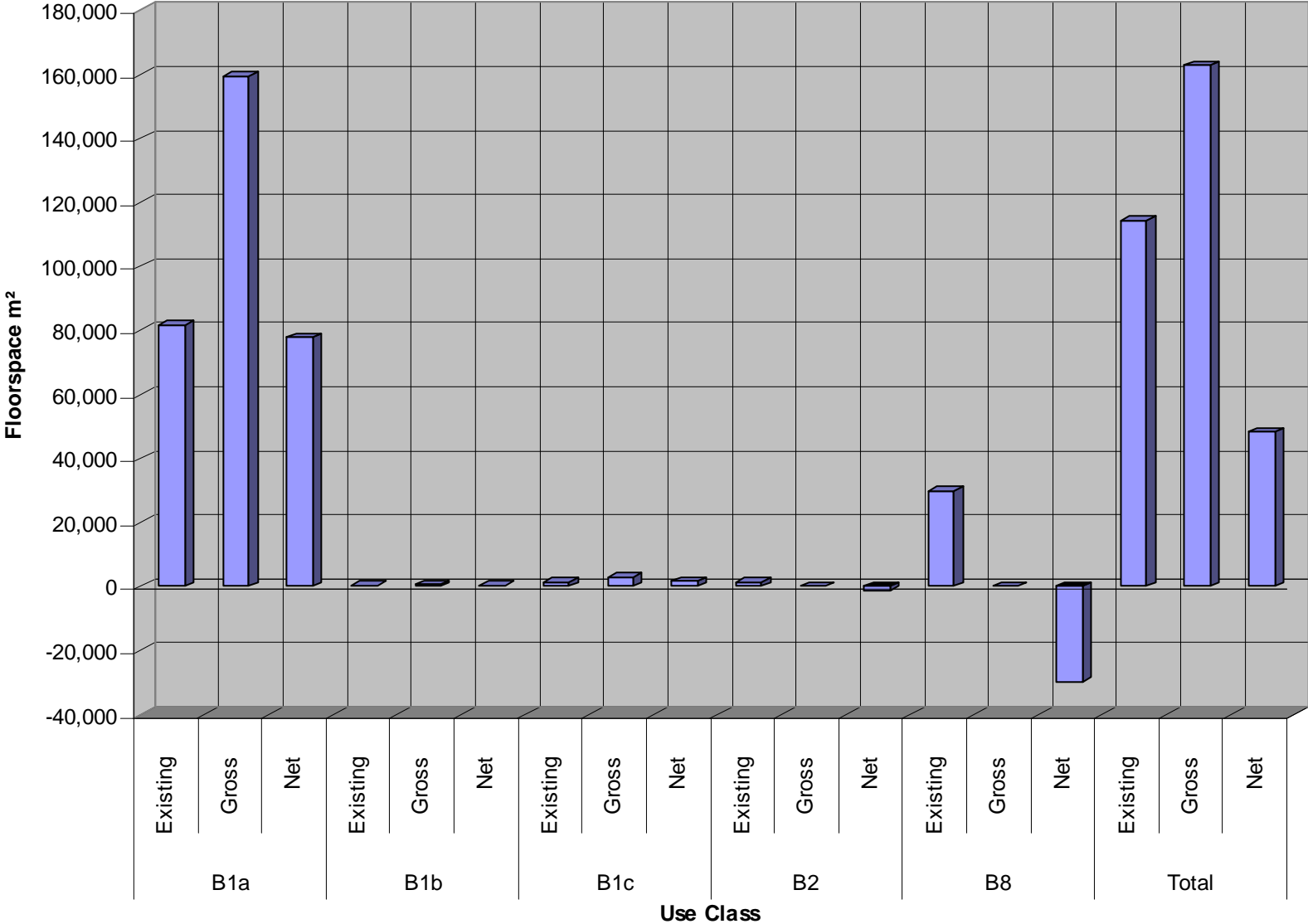
\* Figures excluding the Shell Centre and Elizabeth House planning permissions. Both of these schemes are technically under-construction but not expected to be progressed through to completion.

**Table 8.** Summary of 'B' Class floorspace Under Construction by KIBA/Non KIBA 2010/2011

Location	B1a			B1b			B1c		
	Existing	Gross	Net	Existing	Gross	Net	Existing	Gross	Net
Within KIBA	5,527	8,590	3,063	253	270	17	253	1,423	1,170
Outside KIBA	76,062	150,899	74,683	0	220	220	1,086	1,439	353
<b>Total</b>	81,589	159,489	77,746	253	490	237	1,339	2,862	1,523
Location	B2			B8			Total		
	Existing	Gross	Net	Existing	Gross	Net	Existing	Gross	Net
Within KIBA	752	0	-752	1,149	0	-1,149	7,934	10,283	2,349
Outside KIBA	580	0	-580	28,771	0	-28,771	106,499	152,558	45,905
<b>Total</b>	1,332	0	-1,332	29,920	0	-29,920	114,433	162,841	48,254

All measurements are of gross internal floorspace in metres squared (m<sup>2</sup>)

**Chart 2. 'B' Class Floorspace Under Construction 2010/2011**



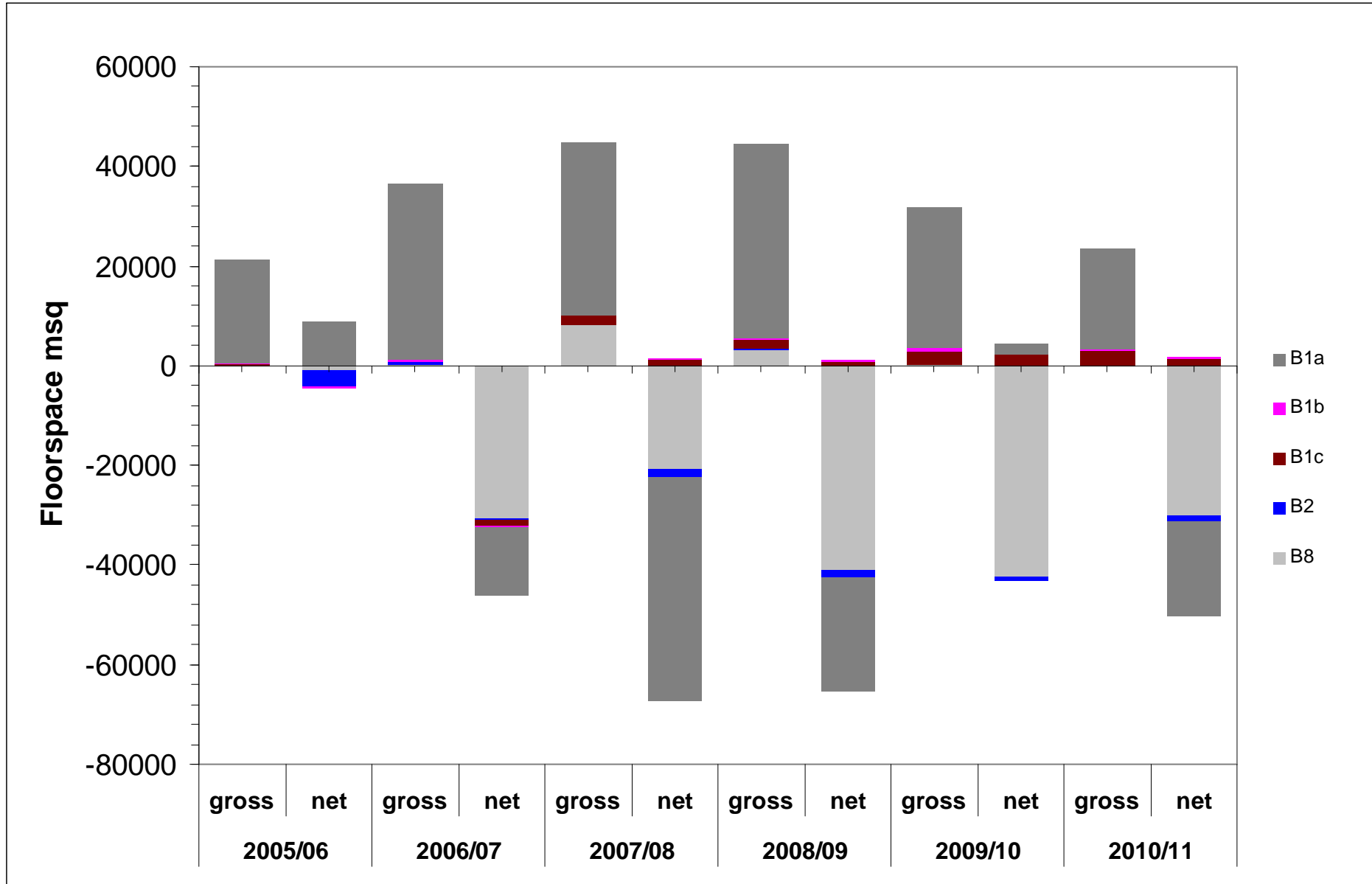
**Table 9.** Rolling Summary of Under Construction 'B' Class Floorspace 2005-2011

Year	B1a			B1b			B1c		
	Existing	Gross	Net	Existing	Gross	Net	Existing	Gross	Net
2005/06	12003	20821	8818	528	207	-321	189	246	57
2006/07	49261	35534	-13727	492	187	-305	918	0	-918
2007/08	79480	34689	-44791	0	141	141	421	1643	1222
2008/09	55232	31968	-23264	0	302	302	1074	1898	824
2009/10	26246	28316	2070	353	490	137	374	2615	2241
2010/11	39060	20175	-18885	253	490	237	1339	2862	1523
Year	B2			B8			Total		
	Existing	Gross	Net	Existing	Gross	Net	Existing	Gross	Net
2005/06	3446	0	-3446	790	0	-790	16956	21274	4318
2006/07	1260	812	-448	30749	116	-30633	82680	36649	-46031
2007/08	1552	0	-1552	29185	8302	-20883	110638	44775	-65863
2008/09	1832	316	-1516	44198	3202	-40996	102336	37686	-64650
2009/10	834	0	-834	42719	332	-42387	70526	31753	-38773
2010/11	1332	0	-1332	29920	0	-29920	71904	23527	-48377

Please Note: Figures for 2008/09, 2009/10 and 2010/12 exclude the Shell Centre and Elizabeth House planning permissions. Both of these schemes are technically under-construction but not expected to be progressed through to completion.



**Chart 3. Rolling Summary of Under Construction 'B' Class Floorspace 2005-2011**



**Table 10. 'B' Class Floorspace Under Construction by Ward 2010/2011**

Ward	Existing						Gross						Net						
	B1a	B1b	B1c	B2	B8	Total	B1a	B1b	B1c	B2	B8	Total	B1a	B1b	B1c	B2	B8	Total	
Bishops	42,757	0	0	0	0	42,757	139,314	0	0	0	0	139,314	96,557	0	0	0	0	0	96,557
Brixton Hill	0	0	0	0	0	0	0	0	0	0	0	0	0	0	0	0	0	0	0
Clapham Common	0	0	0	0	0	0	0	0	0	0	0	0	0	0	0	0	0	0	0
Clapham Town	4,613	0	121	0	0	4,734	7,329	0	0	0	0	7,329	2,716	0	-121	0	0	0	2,595
Coldharbour	0	0	0	0	0	0	0	0	0	0	0	0	0	0	0	0	0	0	0
Ferndale	10,312	0	0	0	0	10,312	1,107	0	247	0	0	1,354	-9,205	0	247	0	0	0	-8,958
Gipsy Hill	1,157	0	0	0	310	1,467	268	0	0	0	0	268	-889	0	0	0	0	-310	-1,199
Herne Hill	253	253	253	0	325	1,084	347	270	270	0	0	887	-60	17	17	0	0	-325	-351
Knights Hill	0	0	0	580	0	580	140	87	0	0	0	227	140	87	0	-580	0	0	-353
Larkhall	3,734	0	965	0	28,591	33,290	9,071	0	1,153	0	0	10,224	5,337	0	188	0	0	-28,591	-23,066
Oval	0	0	0	0	0	0	0	133	0	0	0	133	0	133	0	0	0	0	133
Princes	16,400	0	0	752	0	17,152	523	0	0	0	0	523	-15,877	0	0	0	0	-752	-16,629
St Leonards	0	0	0	0	0	0	0	0	0	0	0	0	0	0	0	0	0	0	0
Stockwell	900	0	0	0	0	900	0	0	0	0	0	0	-900	0	0	0	0	0	-900
Streatham Hill	417	0	0	0	0	417	0	0	0	0	0	0	-417	0	0	0	0	0	-417
Streatham South	0	0	0	0	0	0	0	0	0	0	0	0	0	0	0	0	0	0	0
Streatham Wells	0	0	0	0	0	0	0	0	0	0	0	0	0	0	0	0	0	0	0
Thornton	1,000	0	0	0	0	1,000	1,277	0	1,192	0	0	2,469	277	0	1,192	0	0	0	1,469
Thurlow Park	0	0	0	0	0	0	0	0	0	0	0	0	0	0	0	0	0	0	0
Tulse Hill	46	0	0	0	0	46	113	0	0	0	0	113	67	0	0	0	0	0	67
Vassall	0	0	0	0	694	694	0	0	0	0	0	0	0	0	0	0	0	-694	-694
<b>Total</b>	<b>81,589</b>	<b>253</b>	<b>1,339</b>	<b>1,332</b>	<b>29,920</b>	<b>114,433</b>	<b>159,489</b>	<b>490</b>	<b>2,862</b>	<b>0</b>	<b>0</b>	<b>162,841</b>	<b>77,746</b>	<b>237</b>	<b>1,523</b>	<b>-1,332</b>	<b>-29,920</b>	<b>0</b>	<b>48,254</b>

All measurements are of gross internal floorspace in metres squared (m<sup>2</sup>)

### Section C: Unimplemented Permissions

**Table 11.** Summary of 'B' Class Floorspace Unimplemented Permissions 2010/2011

Use Class	No. of Permissions	Existing	Gross	Net
B1a	58	67,979	73,524	5,545
B1b	2	530	489	-41
B1c	11	7,797	357	-7,440
B2	7	1,537	1,138	-399
B8	16	8,580	14,154	5,574
<b>Total</b>	94	86,423	89,662	3,239

**Table 12.** 'B' Class Floorspace Unimplemented Permissions by Ward 2010/2011

Location	B1a			B1b			B1c		
	Existing	Gross	Net	Existing	Gross	Net	Existing	Gross	Net
Within KIBA	10,436	8,870	-1,566	0	0	0	84	0	-84
Outside KIBA	57,543	64,654	7,111	530	489	-41	7,713	357	-7,356
<b>Total</b>	67,979	73,524	5,545	530	489	-41	7,797	357	-7,440
Location	B2			B8			Total		
	Existing	Gross	Net	Existing	Gross	Net	Existing	Gross	Net
Within KIBA	520	1,033	513	1,907	1,033	-874	12,947	10,936	-2,011
Outside KIBA	1,017	105	-912	6,673	13,121	6,448	73,476	78,726	5,250
<b>Total</b>	1,537	1,138	-399	8,580	14,154	5,574	86,423	89,662	3,239

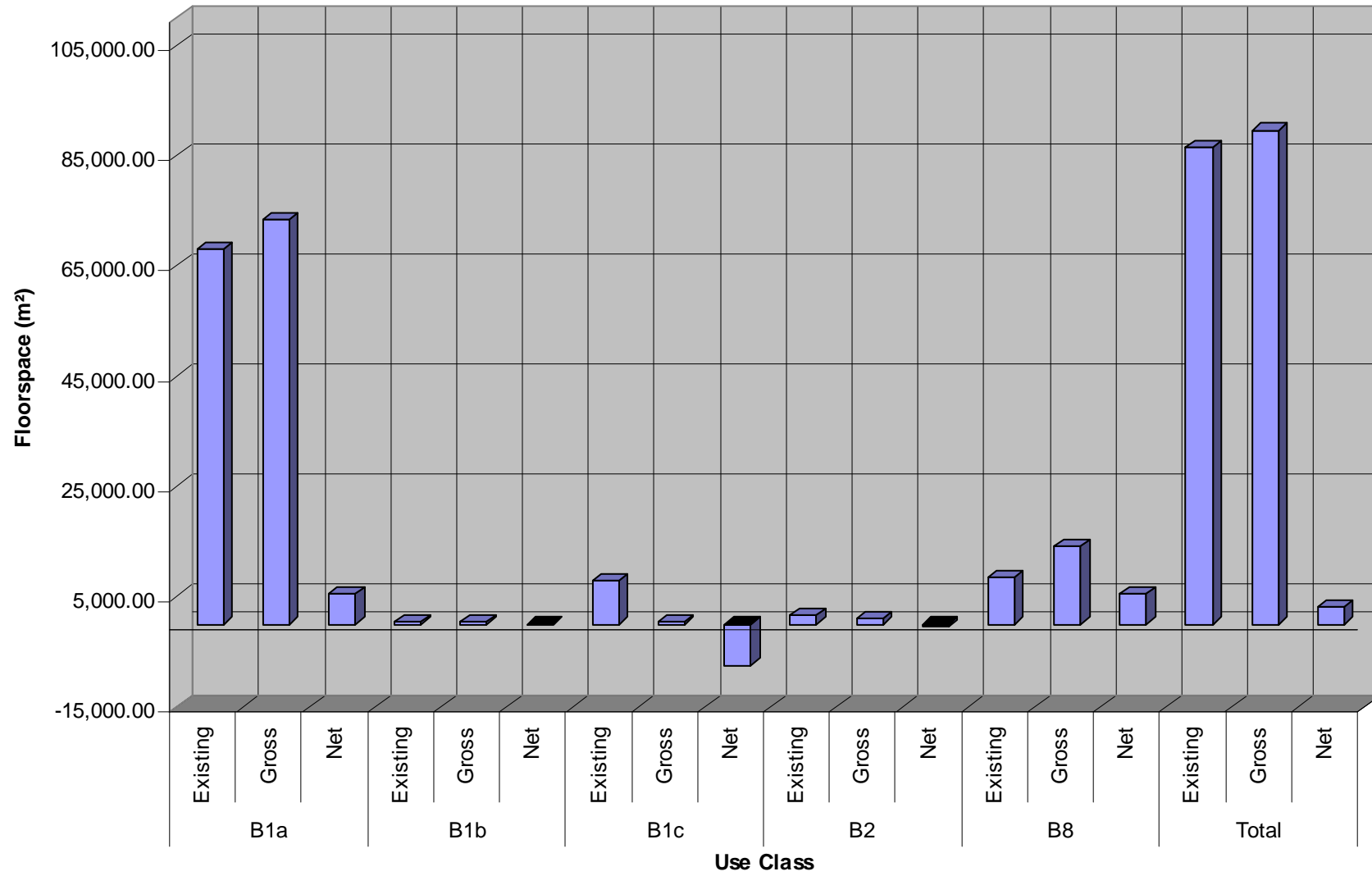
All measurements are of gross internal floorspace in metres squared (m<sup>2</sup>)

**Table 13. 'B' Class Floorspace Unimplemented Permissions by Ward**

Ward	Existing						Gross						Net					
	B1a	B1b	B1c	B2	B8	Total	B1a	B1b	B1c	B2	B8	Total	B1a	B1b	B1c	B2	B8	Total
<b>Bishops</b>	37,894	0	33	0	0	37,927	51,447	0	36	0	0	51,483	13,553	0	3	0	0	13,556
<b>Brixton Hill</b>	0	0	0	0	132	132	0	0	0	0	160	160	0	0	0	0	28	28
<b>Clapham Common</b>	743	0	0	115	59	917	200	0	0	0	0	200	-543	0	0	-115	-59	-717
<b>Clapham Town</b>	1,218	0	0	0	0	1,218	1,665	0	0	0	0	1,665	447	0	0	0	0	447
<b>Coldharbour</b>	6,767	0	2,150	0	0	8,917	564	0	0	0	0	564	-6,203	0	-2,150	0	0	-8,353
<b>Ferndale</b>	140	0	0	0	705	845	75	0	0	0	0	75	-65	0	0	0	-705	-770
<b>Gipsy Hill</b>	105	0	447	0	0	552	0	0	0	105	0	105	-105	0	-447	105	0	-447
<b>Herne Hill</b>	595	530	166	470	750	2,511	2,887	410	83	0	0	3,380	2,292	-120	-83	-470	-750	869
<b>Knights Hill</b>	1,646	0	84	222	702	2,654	560	0	0	0	0	560	-1,086	0	-84	-222	-702	-2,094
<b>Larkhall</b>	2,858	0	189	0	404	3,451	1,404	0	159	0	0	1,563	-1,454	0	-30	0	-404	-1,888
<b>Oval</b>	9,398	0	0	0	2,240	11,638	11,462	0	0	0	0	11,462	2064	0	0	0	-2,240	-176
<b>Princes</b>	3,912	0	0	0	637	4,549	1503	0	0	0	0	1,503	-2409	0	0	0	0	-3,046
<b>St Leonards</b>	105	0	0	0	1,043	1,148	43	0	0	0	0	43	-62	0	0	0	-1043	-1,105
<b>Stockwell</b>	558	0	0	0	1,195	1,753	702	0	0	0	0	702	144	0	0	0	-1195	-1,051
<b>Streatham Hill</b>	861	0	0	0	0	861	0	0	0	0	0	0	-861	0	0	0	0	-861
<b>Streatham South</b>	0	0	4,000	0	0	4,000	619	0	0	0	12,961	13,580	619	0	-4000	0	12961	9,580
<b>Streatham Wells</b>	0	0	0	0	0	0	0	0	0	0	0	0	0	0	0	0	0	0
<b>Thornton</b>	182	0	0	520	520	1,222	0	0	0	1,033	1,033	2,066	-182	0	0	513	513	844
<b>Thurlow Park</b>	110	0	728	210	193	1,241	261	0	79	0	0	340	151	0	-649	-210	-193	-901
<b>Tulse Hill</b>	0	0	0	0	0	0	46	79	0	0	0	125	46	79	0	0	0	125
<b>Vassall</b>	887	0	0	0	0	887	86	0	0	0	0	86	-801	0	0	0	0	-801
<b>Total</b>	67,979	530	7,797	1,537	8,580	86,423	73,524	489	357	1,138	14,154	89,662	5,545	-41	-7,440	-399	5,574	3,239

All measurements are of gross internal floorspace in metres squared (m<sup>2</sup>)

**Chart 4. 'B' Class Floorspace Unimplemented Permissions 2010/2011**

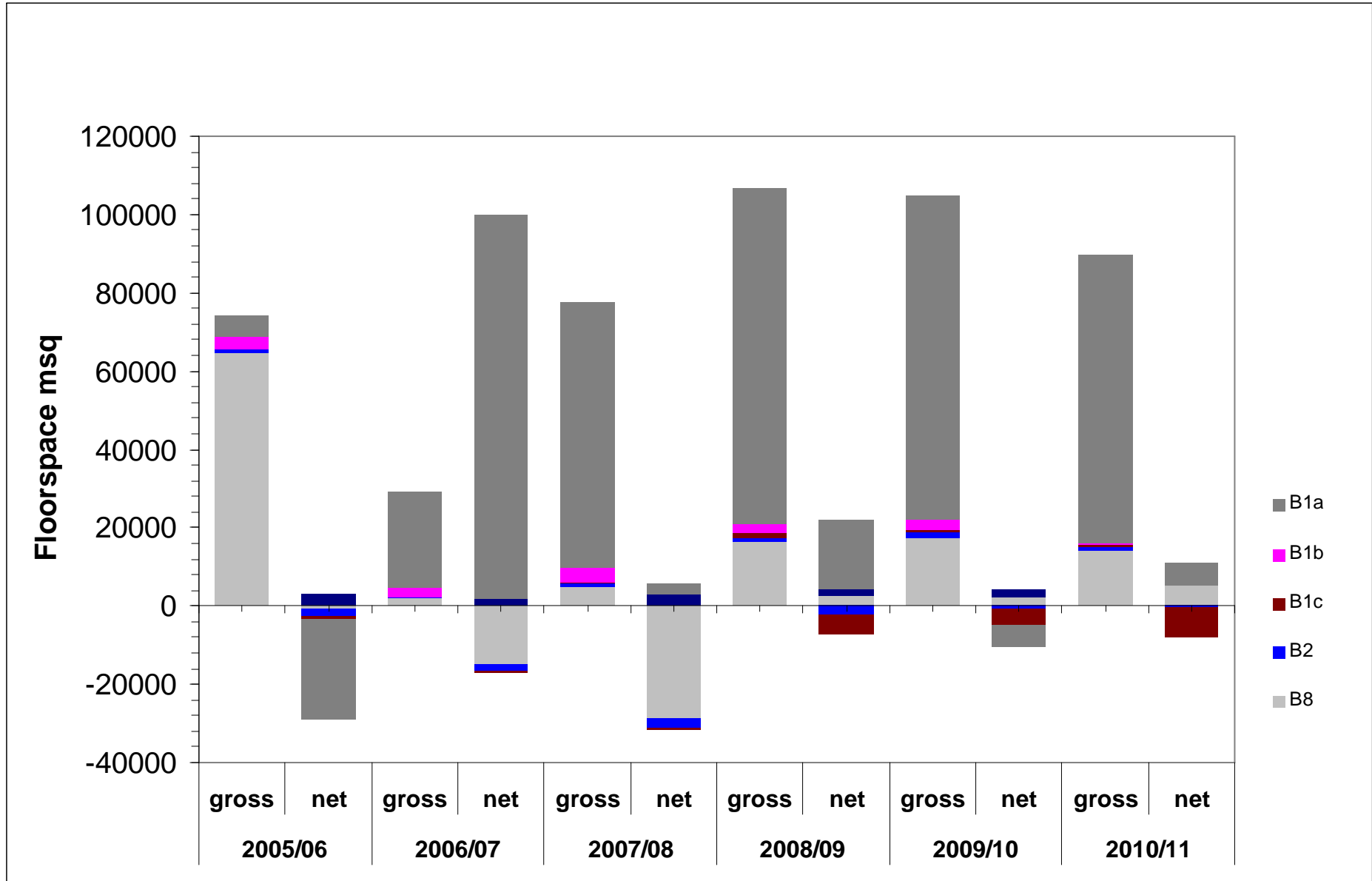


**Table 14.** Rolling Summary of Unimplemented 'B' Class Floorspace 2005-2011

Year	B1a			B1b			B1c		
	Existing	Gross	Net	Existing	Gross	Net	Existing	Gross	Net
2005/06	31,301	5,346	-25,955	89	3,240	3,151	526	120	-406
2006/07	-73,449	24,561	98,010	89	2,100	2,011	410	120	-290
2007/08	65,217	67,688	2,471	482	3,784	3,302	631	453	-178
2008/09	68,377	86,104	17,727	493	2,079	1,586	5,905	1,146	-4,759
2009/10	88,397	82,888	-5,509	530	2,489	1,959	5,039	641	-4,398
2010/11	67,979	73,524	5,545	530	489	-41	7,797	357	-7,440
Year	B2			B8			Total		
	Existing	Gross	Net	Existing	Gross	Net	Existing	Gross	Net
2005/06	2,656	766	-1,890	65,485	64,635	-850	100,057	74,107	-25,950
2006/07	2,226	476	-1,750	16,705	1,835	-14,870	-54,019	29,092	83,111
2007/08	3,753	972	-2,781	33,435	4,893	-28,542	103,518	77,790	-25,728
2008/09	3,515	1,297	-2,218	13,664	16,230	2,566	91,954	106,856	14,902
2009/10	1,774	1,297	-477	15,214	17,608	2,394	110,954	104,923	-6,031
2010/11	1,537	1,138	-399	8,580	14,154	5,574	86,423	89,662	3,239

Please note: Figures for 2005/06, 2006/07 and 2007/08 exclude the Shell Centre and Elizabeth House planning permissions. Both of these schemes are technically under-construction but not expected to be progressed through to completion.

**Chart 5. Rolling Summary of Unimplemented 'B' Class Floorspace 2005-2011**



**Section D: Historical Approvals**

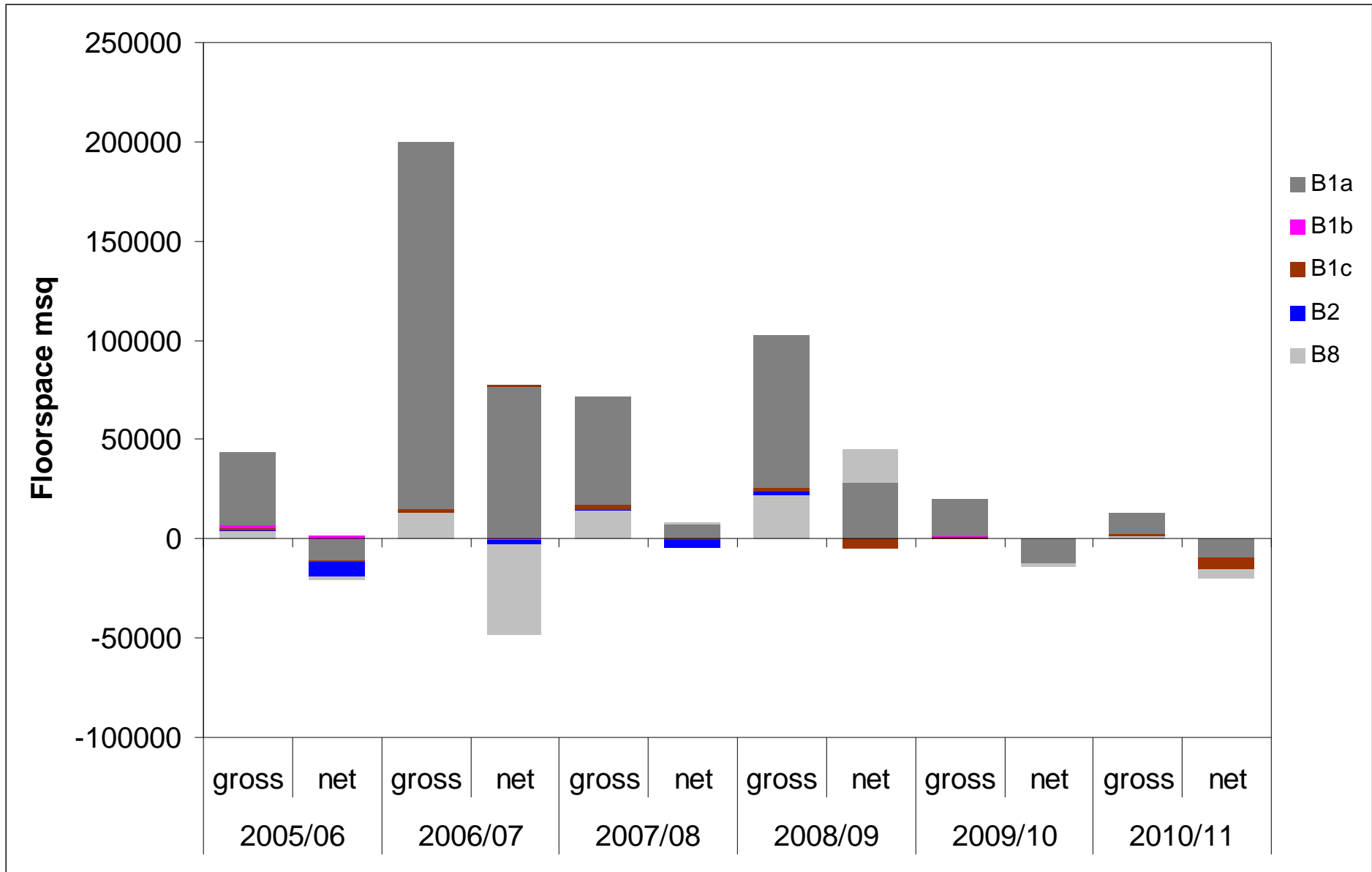
**Table 15.** Rolling Summary of 'B' Class Floorspace Permissions Granted 2005-2011

Year	B1a			B1b			B1c		
	Existing	Gross	Net	Existing	Gross	Net	Existing	Gross	Net
2005/06	47,483	36,389	-11,094	125	1,687	1,562	1,087	540	-547
2006/07	108,084	185,031	76,947	920	148	-772	802	1183	381
2007/08	46,748	54,591	7,843	0	87	87	2,075	1,868	-207
2008/09	48,294	76,477	28,183	100	79	-21	7,206	2,275	-4,931
2009/10	30,715	18,713	-12,002	783	680	-103	802	756	-46
2010/11	20,110	10,874	-9,236	0	0	0	5,913	242	-5,671
<b>Total</b>	301,434	382,075	80,641	1,928	2,681	753	17,885	6,864	-11,021
Year	B2			B8			Total		
	Existing	Gross	Net	Existing	Gross	Net	Existing	Gross	Net
2005/06	8,301	1,091	-7,210	5,405	3,755	-1,650	62,401	43,462	-18,939
2006/07	2,548	522	-2,026	58,557	13,148	-45,409	170,911	200,032	29,121
2007/08	5,034	1,099	-3,935	13,880	14,164	284	67,737	71,809	4,072
2008/09	1,022	1,033	11	5,375	22,484	17,109	61,997	102,348	40,351
2009/10	0	0	0	1,446	0	-1,446	33,745	20,149	-13,597
2010/11	585	105	-480	6,028	1,762	-4,266	32,636	12,983	-19,653
<b>Total</b>	17,490	3,850	-13,640	90,691	55,313	-35,378	429,427	450,783	21,355

All measurements are of gross internal floorspace in metres squared (m<sup>2</sup>)



**Chart 6. Rolling Summary of 'B' Class Floorspace Permissions Granted 2005-2011**

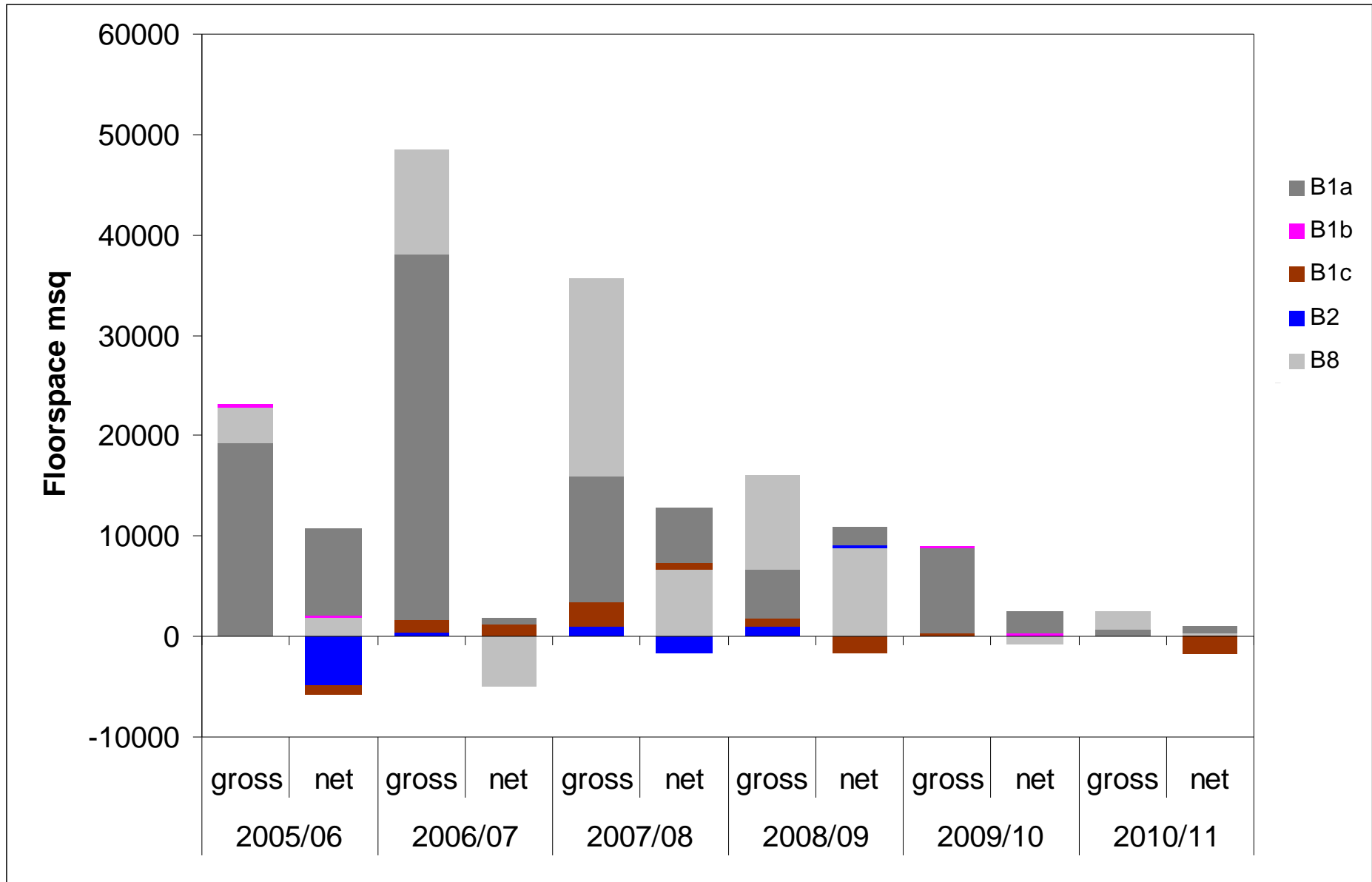


**Table 16.** Rolling Summary of 'B' Class Floorspace Permissions Granted Within KIBAs 2005-2011

Year	B1a			B1b			B1c		
	Existing	Gross	Net	Existing	Gross	Net	Existing	Gross	Net
2005/06	10,558	19,265	8,707	0	240	240	898	0	-898
2006/07	35,874	36,436	563	35	0	-35	0	1153	1,153
2007/08	6,997	12,494	5,497	0	0	0	1,604	2,358	754
2008/09	3,097	4,881	1,784	0	0	0	2,399	788	-1,611
2009/10	6,354	8,550	2,196	253	270	17	253	270	17
2010/11	503	826	323	0	0	0	1,715	0	-1,715
<b>Total</b>	<b>63,383</b>	<b>82,452</b>	<b>19,070</b>	<b>288</b>	<b>510</b>	<b>222</b>	<b>6,869</b>	<b>4,569</b>	<b>-2,300</b>
Year	B2			B8			Total		
	Existing	Gross	Net	Existing	Gross	Net	Existing	Gross	Net
2005/06	4,874	58	-4,815	1,716	3,609	1,893	18,046	23,172	5,126
2006/07	482	522	40	15,434	10,449	-4,986	51,825	48,560	-3,265
2007/08	2,741	1,099	-1,642	13,156	19,747	6,591	24,498	35,698	11,200
2008/09	742	1,033	291	520	9,363	8,843	6,758	16,065	9,307
2009/10	0	0	0	750	0	-750	7,610	9,090	1,480
2010/11	0	0	0	1,331	1,631	300	3,549	2,457	-1,092
<b>Total</b>	<b>8,839</b>	<b>2,712</b>	<b>-6,126</b>	<b>32,907</b>	<b>44,799</b>	<b>11,891</b>	<b>112,286</b>	<b>135,042</b>	<b>22,756</b>

All measurements are of gross internal floorspace in metres squared (m<sup>2</sup>)

Chart 7. Rolling Summary of 'B' Class Floorspace Permissions Granted Within KIBAs 2005-2011



**Table 17. 'B' Class Floorspace Completed 2010/2011**

Address		App Ref	Description	Gross B1a	Gross B1b	Gross B1c	Gross B2	Gross B8	Total Gross 'B' Uses	Total Gross Other Uses
Acre House, 10 Acre Lane, SW2 5SG		08/02450/FUL	Change of use from B1 (offices) to A2 (credit union).	0	0	0	0	0	0	100
		<b>Approval Date</b>								
		02/10/2008								
<b>Ward</b>	<b>In KIBA?</b>	<b>Site Area (Ha)</b>		<b>Net B1a</b>	<b>Net B1b</b>	<b>Net B1c</b>	<b>Net B2</b>	<b>Net B8</b>	<b>Total Net 'B' Uses</b>	<b>Total Net Other Uses</b>
F	N	0.01		0	-100	0	0	0	-100	100
Address		App Ref	Description	Gross B1a	Gross B1b	Gross B1c	Gross B2	Gross B8	Total Gross 'B' Uses	Total Gross Other Uses
Alford House, Aveline Street, SE11 5DQ		06/02080/FUL	Refurbishment and extension of existing youth club, creation of a business enterprise centre, re-positioning the existing caretakers flat and use of part of the building as a community hall involving the erection of a two-storey side extension.	507	0	0	0	0	507	1,255
		<b>Approval Date</b>								
		30/03/2007								
<b>Ward</b>	<b>In KIBA?</b>	<b>Site Area (Ha)</b>		<b>Net B1a</b>	<b>Net B1b</b>	<b>Net B1c</b>	<b>Net B2</b>	<b>Net B8</b>	<b>Total Net 'B' Uses</b>	<b>Total Net Other Uses</b>
P	N	0.15		363	0	0	0	0	363	412
Address		App Ref	Description	Gross B1a	Gross B1b	Gross B1c	Gross B2	Gross B8	Total Gross 'B' Uses	Total Gross Other Uses
21-25 Beehive Place, SW9 7QR		09/02944/FUL	Change of Use and retention of property as a non residential institution (Use Class D1).	0	0	0	0	0	0	378
		<b>Approval Date</b>								
		27/11/2009								
<b>Ward</b>	<b>In KIBA?</b>	<b>Site Area (Ha)</b>		<b>Net B1a</b>	<b>Net B1b</b>	<b>Net B1c</b>	<b>Net B2</b>	<b>Net B8</b>	<b>Total Net 'B' Uses</b>	<b>Total Net Other Uses</b>
C	N	0.01		-378	0	0	0	0	-378	378
Address		App Ref	Description	Gross B1a	Gross B1b	Gross B1c	Gross B2	Gross B8	Total Gross 'B' Uses	Total Gross Other Uses
98A Branksome Road, SW2 5JA		05/01841/FUL	Change of use from Industrial (Class B2) into a 3 bedroom dwelling house (Class C3), along with associated alterations.	0	0	0	0	0	0	0
		<b>Approval Date</b>								
		08/08/2005								
<b>Ward</b>	<b>In KIBA?</b>	<b>Site Area (Ha)</b>		<b>Net B1a</b>	<b>Net B1b</b>	<b>Net B1c</b>	<b>Net B2</b>	<b>Net B8</b>	<b>Total Net 'B' Uses</b>	<b>Total Net Other Uses</b>
BH	N	0.01		0	0	0	-134	0	-134	0

All measurements are of gross internal floorspace in metres squared (m<sup>2</sup>)

**Table 17. 'B' Class Floorspace Completed 2010/2011**

Address		App Ref	Description	Gross B1a	Gross B1b	Gross B1c	Gross B2	Gross B8	Total Gross 'B' Uses	Total Gross Other Uses
Caretakers Store, Burton Lane, SW9 6QG		09/03189/RG3	Change of use of to provide a community hall (Use Class D1) involving alterations to windows and doors at ground floor level.	0	0	0	0	0	0	142
		<b>Approval Date</b>		<b>Net B1a</b>	<b>Net B1b</b>	<b>Net B1c</b>	<b>Net B2</b>	<b>Net B8</b>	<b>Total Net 'B' Uses</b>	<b>Total Net Other Uses</b>
		28/01/2010		0	0	0	0	-136	-136	142
<b>Ward</b>	<b>In KIBA?</b>	<b>Site Area (Ha)</b>								
V	N	0.02								
Address		App Ref	Description	Gross B1a	Gross B1b	Gross B1c	Gross B2	Gross B8	Total Gross 'B' Uses	Total Gross Other Uses
131-143 Clapham Road, SW9 0HP		06/02044/FUL	Demolition of the existing buildings, retention of and alterations to the listed building at 135 Clapham Road, retention of the Victorian print works building and erection of new buildings containing 260 residential units, Retail (A1), Financial/Professional Services (A2), Restaurants/café (A3), Drinking Establishments (A4) and Business (B1).	10,084	0	0	0	0	10,084	3,120
		<b>Approval Date</b>		<b>Net B1a</b>	<b>Net B1b</b>	<b>Net B1c</b>	<b>Net B2</b>	<b>Net B8</b>	<b>Total Net 'B' Uses</b>	<b>Total Net Other Uses</b>
		12/01/2007		-4,044	0	0	0	-14,128	-18,172	3,120
<b>Ward</b>	<b>In KIBA?</b>	<b>Site Area (Ha)</b>								
V	Y	1.63								
Address		App Ref	Description	Gross B1a	Gross B1b	Gross B1c	Gross B2	Gross B8	Total Gross 'B' Uses	Total Gross Other Uses
65 Coldharbour Lane, SW9 8PS		10/00094/FUL	Demolition of existing rear outbuildings with the erection of a two storey rear extension to provide consulting rooms (Use class D1) at ground floor level and midwives offices (Use class B1) at first floor level.	130	0	0	0	0	130	217
		<b>Approval Date</b>		<b>Net B1a</b>	<b>Net B1b</b>	<b>Net B1c</b>	<b>Net B2</b>	<b>Net B8</b>	<b>Total Net 'B' Uses</b>	<b>Total Net Other Uses</b>
		15/04/2010		-87	0	0	0	0	-87	217
<b>Ward</b>	<b>In KIBA?</b>	<b>Site Area (Ha)</b>								
HH	N	0.04								

All measurements are of gross internal floorspace in metres squared (m<sup>2</sup>)

**Table 17. 'B' Class Floorspace Completed 2010/2011**

Address		App Ref	Description	Gross B1a	Gross B1b	Gross B1c	Gross B2	Gross B8	Total Gross 'B' Uses	Total Gross Other Uses
Plot Bounded By Rear Of 7 to 16 Cotswold Street & Beadman Place, SE27 0DN		07/02195/FUL	Erection of a 2 storey light industrial and retail unit with on site parking spaces for 5 cars.	291	0	0	0	172	463	46
		<b>Approval Date</b>		<b>Net B1a</b>	<b>Net B1b</b>	<b>Net B1c</b>	<b>Net B2</b>	<b>Net B8</b>	<b>Total Net 'B' Uses</b>	<b>Total Net Other Uses</b>
		27/08/2008		291	0	0	0	172	463	-485
<b>Ward</b>	<b>In KIBA?</b>	<b>Site Area (Ha)</b>								
KH	Y	0.05								
Address		App Ref	Description	Gross B1a	Gross B1b	Gross B1c	Gross B2	Gross B8	Total Gross 'B' Uses	Total Gross Other Uses
Winchester House, 9-13 Cranmer Road, SW9 6EJ		09/03485/FUL	Change of use of first floor to an employment training centre (Use Class D1).	0	0	0	0	0	0	1,637
		<b>Approval Date</b>		<b>Net B1a</b>	<b>Net B1b</b>	<b>Net B1c</b>	<b>Net B2</b>	<b>Net B8</b>	<b>Total Net 'B' Uses</b>	<b>Total Net Other Uses</b>
		10/03/2010		-1,637	0	0	0	0	-1,637	1,637
<b>Ward</b>	<b>In KIBA?</b>	<b>Site Area (Ha)</b>								
V	Y	0.21								
Address		App Ref	Description	Gross B1a	Gross B1b	Gross B1c	Gross B2	Gross B8	Total Gross 'B' Uses	Total Gross Other Uses
1A Elms Road, SW4 9ET		07/04668/FUL	Demolition of existing single storey garage and erection of a part single part two storey building involving excavation of a basement level to create a live/work unit.	0	0	0	0	0	0	0
		<b>Approval Date</b>		<b>Net B1a</b>	<b>Net B1b</b>	<b>Net B1c</b>	<b>Net B2</b>	<b>Net B8</b>	<b>Total Net 'B' Uses</b>	<b>Total Net Other Uses</b>
		22/01/2008		0	0	0	-120	0	-120	0
<b>Ward</b>	<b>In KIBA?</b>	<b>Site Area (Ha)</b>								
CC	N	0.01								
Address		App Ref	Description	Gross B1a	Gross B1b	Gross B1c	Gross B2	Gross B8	Total Gross 'B' Uses	Total Gross Other Uses
20 Gleneagle Mews, SW16 6 AE		03/01578/FUL	Change of use of existing workshop to a two bedroom residential unit together with external alterations including raising the height of the roof and the insertion of windows and doors in the front and rear elevations.	0	0	0	0	0	0	0
		<b>Approval Date</b>		<b>Net B1a</b>	<b>Net B1b</b>	<b>Net B1c</b>	<b>Net B2</b>	<b>Net B8</b>	<b>Total Net 'B' Uses</b>	<b>Total Net Other Uses</b>
		14/01/2004		0	0	-122	0	0	-122	0
<b>Ward</b>	<b>In KIBA?</b>	<b>Site Area (Ha)</b>								
SL	N	0.01								

All measurements are of gross internal floorspace in metres squared (m<sup>2</sup>)

**Table 17. 'B' Class Floorspace Completed 2010/2011**

Address		App Ref	Description	Gross B1a	Gross B1b	Gross B1c	Gross B2	Gross B8	Total Gross 'B' Uses	Total Gross Other Uses
1 Glyn Street, SE11 5HT		07/01681/FUL	Redevelopment of the site involving the demolition of the existing building and erection of a seven-storey building to provide 69 self-contained flats with a retail/café unit (Use Class A1/A3) to part of ground floor level fronting onto Auckland Street.	0	0	0	0	0	0	200
		<b>Approval Date</b>		11/09/2007	<b>Net B1a</b>	<b>Net B1b</b>	<b>Net B1c</b>	<b>Net B2</b>	<b>Net B8</b>	<b>Total Net 'B' Uses</b>
<b>Ward</b>	<b>In KIBA?</b>	<b>Site Area (Ha)</b>		-1,858	0	0	0	0	-1,858	200
P	N	0.11								
Address		App Ref	Description	Gross B1a	Gross B1b	Gross B1c	Gross B2	Gross B8	Total Gross 'B' Uses	Total Gross Other Uses
325 Kennington Road, SE11 4QH		09/02842/FUL	Change of use of premises at ground and lower ground floor levels to Financial & Professional services (Use Class A2).	0	0	0	0	0	0	60
		<b>Approval Date</b>		29/10/2009	<b>Net B1a</b>	<b>Net B1b</b>	<b>Net B1c</b>	<b>Net B2</b>	<b>Net B8</b>	<b>Total Net 'B' Uses</b>
<b>Ward</b>	<b>In KIBA?</b>	<b>Site Area (Ha)</b>		-60	0	0	0	0	-60	60
P	N	0.02								
Address		App Ref	Description	Gross B1a	Gross B1b	Gross B1c	Gross B2	Gross B8	Total Gross 'B' Uses	Total Gross Other Uses
3 Knight's Hill Square, SE27 0HP		10/01142/FUL	Change of use from Business (Use Class B1) to Storage and Distribution (Use Class B8).	0	0	0	0	1,631	1,631	0
		<b>Approval Date</b>		01/07/2010	<b>Net B1a</b>	<b>Net B1b</b>	<b>Net B1c</b>	<b>Net B2</b>	<b>Net B8</b>	<b>Total Net 'B' Uses</b>
<b>Ward</b>	<b>In KIBA?</b>	<b>Site Area (Ha)</b>		0	0	-1,631	0	1,631	0	0
KH	Y	0.16								

All measurements are of gross internal floorspace in metres squared (m<sup>2</sup>)

**Table 17. 'B' Class Floorspace Completed 2010/2011**

Address		App Ref	Description	Gross B1a	Gross B1b	Gross B1c	Gross B2	Gross B8	Total Gross 'B' Uses	Total Gross Other Uses
Lothian Christian Centre, 81 Lothian Road, SW9 6TS		10/04445/FUL	Change of use of the three garages to ancillary meeting rooms.	37	0	0	0	0	37	0
		<b>Approval Date</b>								
		10/03/2011								
<b>Ward</b>	<b>In KIBA?</b>	<b>Site Area (Ha)</b>		<b>Net B1a</b>	<b>Net B1b</b>	<b>Net B1c</b>	<b>Net B2</b>	<b>Net B8</b>	<b>Total Net 'B' Uses</b>	<b>Total Net Other Uses</b>
V	N	0.03	37	0	0	0	0	37	-37	
Address		App Ref	Description	Gross B1a	Gross B1b	Gross B1c	Gross B2	Gross B8	Total Gross 'B' Uses	Total Gross Other Uses
61 Shrubbery Road, SW16 2AS		10/00380/FUL	Change of use of part ground and mezzanine level to a residential studio flat.	0	0	0	0	131	131	0
		<b>Approval Date</b>								
		19/04/2010								
<b>Ward</b>	<b>In KIBA?</b>	<b>Site Area (Ha)</b>		<b>Net B1a</b>	<b>Net B1b</b>	<b>Net B1c</b>	<b>Net B2</b>	<b>Net B8</b>	<b>Total Net 'B' Uses</b>	<b>Total Net Other Uses</b>
SW	N	0.04	0	0	0	0	-50	-50	0	
Address		App Ref	Description	Gross B1a	Gross B1b	Gross B1c	Gross B2	Gross B8	Total Gross 'B' Uses	Total Gross Other Uses
10 Station Rise, SE27 9BW		05/02142/FUL	Change of use from a Barber shop (Class A1) into an Office (Class B1), along with associated alterations.	98	0	0	0	0	98	0
		<b>Approval Date</b>								
		26/09/2005								
<b>Ward</b>	<b>In KIBA?</b>	<b>Site Area (Ha)</b>		<b>Net B1a</b>	<b>Net B1b</b>	<b>Net B1c</b>	<b>Net B2</b>	<b>Net B8</b>	<b>Total Net 'B' Uses</b>	<b>Total Net Other Uses</b>
TP	N	0.01	98	0	0	0	0	98	-98	

All measurements are of gross internal floorspace in metres squared (m<sup>2</sup>)



**Table 17. 'B' Class Floorspace Completed 2010/2011**

Address		App Ref	Description	Gross B1a	Gross B1b	Gross B1c	Gross B2	Gross B8	Total Gross 'B' Uses	Total Gross Other Uses
17-19 Stockwell Road, SW9 9AU		06/01945/FUL	Demolition of the existing buildings and erection of a four-storey building to provide 30 self contained flats with an 133 sqm falling within use classes retail/commercial/community (A1/A3/A4/B1/D1/D2).	0	0	0	0	0	0	133
		<b>Approval Date</b>		<b>Net B1a</b>	<b>Net B1b</b>	<b>Net B1c</b>	<b>Net B2</b>	<b>Net B8</b>	<b>Total Net 'B' Uses</b>	<b>Total Net Other Uses</b>
		30/07/2007		0	0	0	-817	0	-817	133
<b>Ward</b>	<b>In KIBA?</b>	<b>Site Area (Ha)</b>								
S	N	0.19								
Address		App Ref	Description	Gross B1a	Gross B1b	Gross B1c	Gross B2	Gross B8	Total Gross 'B' Uses	Total Gross Other Uses
136 Streatham High Road, SW16 1BW		09/04287/FUL	Change of use of second floor level from Office (Use Class B1) to Dance and Martial Arts centre (Use Class D2).	0	0	0	0	0	0	200
		<b>Approval Date</b>		<b>Net B1a</b>	<b>Net B1b</b>	<b>Net B1c</b>	<b>Net B2</b>	<b>Net B8</b>	<b>Total Net 'B' Uses</b>	<b>Total Net Other Uses</b>
		12/05/2010		-200	0	0	0	0	-200	200
<b>Ward</b>	<b>In KIBA?</b>	<b>Site Area (Ha)</b>								
SL	N	0.02								
Address		App Ref	Description	Gross B1a	Gross B1b	Gross B1c	Gross B2	Gross B8	Total Gross 'B' Uses	Total Gross Other Uses
240A to 244A And 246 Streatham High Road, SW16 1BB		06/01767/FUL	Change of use from vacant office/ ancillary shop at first floor and conversion to provide two 2-bedroom and three 1-bedroom self contained flats.	0	0	0	0	0	0	0
		<b>Approval Date</b>		<b>Net B1a</b>	<b>Net B1b</b>	<b>Net B1c</b>	<b>Net B2</b>	<b>Net B8</b>	<b>Total Net 'B' Uses</b>	<b>Total Net Other Uses</b>
		17/07/2007		-346	0	0	0	0	-346	0
<b>Ward</b>	<b>In KIBA?</b>	<b>Site Area (Ha)</b>								
SL	N	0.03								
Address		App Ref	Description	Gross B1a	Gross B1b	Gross B1c	Gross B2	Gross B8	Total Gross 'B' Uses	Total Gross Other Uses
181 Valley Road, SW16 2XH		07/03607/FUL	Demolition of existing office and garage to the rear of 181 Valley Road and erection of a single storey building for use as a garage/storage.	0	0	0	0	44	44	0
		<b>Approval Date</b>		<b>Net B1a</b>	<b>Net B1b</b>	<b>Net B1c</b>	<b>Net B2</b>	<b>Net B8</b>	<b>Total Net 'B' Uses</b>	<b>Total Net Other Uses</b>
		02/11/2007		0	0	0	0	10	10	0
<b>Ward</b>	<b>In KIBA?</b>	<b>Site Area (Ha)</b>								
SW	N	0.03								

All measurements are of gross internal floorspace in metres squared (m<sup>2</sup>)

**Table 17. 'B' Class Floorspace Completed 2010/2011**

Address		App Ref	Description	Gross B1a	Gross B1b	Gross B1c	Gross B2	Gross B8	Total Gross 'B' Uses	Total Gross Other Uses
South Bank University, Wandsworth Road, SW8 2JZ		08/03976/FUL	Partial demolition, alterations and extension in association with the use of the building for commercial, community and residential use.	351	0	0	0	0	351	4,525
		<b>Approval Date</b>		<b>Net B1a</b>	<b>Net B1b</b>	<b>Net B1c</b>	<b>Net B2</b>	<b>Net B8</b>	<b>Total Net 'B' Uses</b>	<b>Total Net Other Uses</b>
		12/10/2006								
<b>Ward</b>	<b>In KIBA?</b>	<b>Site Area (Ha)</b>								
S	N	0.81		351	0	0	0	0	351	-16,842
Address		App Ref	Description	Gross B1a	Gross B1b	Gross B1c	Gross B2	Gross B8	Total Gross 'B' Uses	Total Gross Other Uses
109-119 Waterloo Road, SE1 8UL		04/03845/FUL	Change of use of the southern part of the basement and ground floor levels from a bank and ancillary storage (Class A2) and internet cafe and other retail floorspace (Class A1) to a restaurant (Class A3) and relocation of the bank from the ground floor level to the southern part of the first floor level which currently provides office accommodation (Class B1).	0	0	0	0	0	0	879
		<b>Approval Date</b>		<b>Net B1a</b>	<b>Net B1b</b>	<b>Net B1c</b>	<b>Net B2</b>	<b>Net B8</b>	<b>Total Net 'B' Uses</b>	<b>Total Net Other Uses</b>
		02/12/2005								
<b>Ward</b>	<b>In KIBA?</b>	<b>Site Area (Ha)</b>								
B	N	0.05		-204	0	0	0	0	-204	169

All measurements are of gross internal floorspace in metres squared (m<sup>2</sup>)

**Table 18. 'B' Class Floorspace Under Construction 2010/2011**

Address		App Ref	Description	Gross B1a	Gross B1b	Gross B1c	Gross B2	Gross B8	Total Gross 'B' Uses	Total Gross Other Uses
Hampton House, 20 Albert Embankment, SE1 7TJ		07/04264/FUL	Demolition of existing buildings and erection of three buildings to provide a mixed use development comprising ground floor commercial units (flexible use class A1, A2, A3, A4, B1, D2), 167 room apart-hotel, 242 self contained residential units.	235	0	0	0	0	235	4,520
		<b>Approval Date</b>		<b>Net B1a</b>	<b>Net B1b</b>	<b>Net B1c</b>	<b>Net B2</b>	<b>Net B8</b>	<b>Total Net 'B' Uses</b>	<b>Total Net Other Uses</b>
		27/03/2008		-16,165	0	0	0	0	-16,165	4,520
<b>Ward</b>	<b>In KIBA?</b>	<b>Site Area (Ha)</b>								
P	N	0.47								
Address		App Ref	Description	Gross B1a	Gross B1b	Gross B1c	Gross B2	Gross B8	Total Gross 'B' Uses	Total Gross Other Uses
Rear Of 81 Brixton Hill, SW2 1JE		05/01118/FUL	Demolition of existing domestic garages at rear of 81 Brixton Hill and erection of a single storey office (Class B) building. Erection of a single storey rear extension to the existing office building at 74 Josephine Avenue.	113	0	0	0	0	113	0
		<b>Approval Date</b>		<b>Net B1a</b>	<b>Net B1b</b>	<b>Net B1c</b>	<b>Net B2</b>	<b>Net B8</b>	<b>Total Net 'B' Uses</b>	<b>Total Net Other Uses</b>
		07/06/2005		67	0	0	0	0	67	-46
<b>Ward</b>	<b>In KIBA?</b>	<b>Site Area (Ha)</b>								
TH	N	0.02								
Address		App Ref	Description	Gross B1a	Gross B1b	Gross B1c	Gross B2	Gross B8	Total Gross 'B' Uses	Total Gross Other Uses
Coldharbour Industrial Estate, 129-131 Coldharbour Lane, SE5 9NY		09/00727/FUL	Alterations to the front and rear elevation including the installation of new windows and doors to enable continued use for mixed B Class use.	270	270	270	0	0	810	0
		<b>Approval Date</b>		<b>Net B1a</b>	<b>Net B1b</b>	<b>Net B1c</b>	<b>Net B2</b>	<b>Net B8</b>	<b>Total Net 'B' Uses</b>	<b>Total Net Other Uses</b>
		01/05/2009		17	17	17	0	0	51	0
<b>Ward</b>	<b>In KIBA?</b>	<b>Site Area (Ha)</b>								
HH	Y	0.04								
Address		App Ref	Description	Gross B1a	Gross B1b	Gross B1c	Gross B2	Gross B8	Total Gross 'B' Uses	Total Gross Other Uses
Mary Seacole House, 91 Clapham High Street, SW4 7TF		09/00196/FUL	Demolition of existing buildings and redevelopment to provide a mixed use development in a building ranging from 1 to 12 storeys to provide a 1,652m <sup>2</sup> Library (Use Class D1) a 108m <sup>2</sup> Café (Use Class A3), a 1,866m <sup>2</sup> Primary Care Centre (Use Class D1) and 136 residential units.	0	0	0	0	0	0	3,626
		<b>Approval Date</b>		<b>Net B1a</b>	<b>Net B1b</b>	<b>Net B1c</b>	<b>Net B2</b>	<b>Net B8</b>	<b>Total Net 'B' Uses</b>	<b>Total Net Other Uses</b>
		03/09/2009		-7,997	0	0	0	0	-7,997	3,626
<b>Ward</b>	<b>In KIBA?</b>	<b>Site Area (Ha)</b>								
F	N	0.4								

**Table 18. 'B' Class Floorspace Under Construction 2010/2011**

Address		App Ref	Description	Gross B1a	Gross B1b	Gross B1c	Gross B2	Gross B8	Total Gross 'B' Uses	Total Gross Other Uses
Leisure Centre & Depot, Clapham Manor Street SW4 6DB		09/00197/FUL	Demolition of existing building to provide a mixed use development in three separate buildings varying from 1- 6 storeys in height to provide a 4860m <sup>2</sup> leisure centre (D2).	0	0	247	0	0	247	4,860
		<b>Approval Date</b>								
		03/09/2009								
<b>Ward</b>	<b>In KIBA?</b>	<b>Site Area (Ha)</b>		<b>Net B1a</b>	<b>Net B1b</b>	<b>Net B1c</b>	<b>Net B2</b>	<b>Net B8</b>	<b>Total Net 'B' Uses</b>	<b>Total Net Other Uses</b>
CT	N	0.56		0	0	247	0	0	247	300
Address		App Ref	Description	Gross B1a	Gross B1b	Gross B1c	Gross B2	Gross B8	Total Gross 'B' Uses	Total Gross Other Uses
144-150 Clapham Manor Street London SW4 6BX		07/02777/FUL	Change of use of upper floors of 146 from office use (Class B1) to residential (Class C3) and conversion of upper floors of 146 and 148 into 6 self contained flats comprising 2-two bed, 2-one bed and 2 studio flats.	0	0	0	0	0	0	0
		<b>Approval Date</b>								
		12/02/2009								
<b>Ward</b>	<b>In KIBA?</b>	<b>Site Area (Ha)</b>		<b>Net B1a</b>	<b>Net B1b</b>	<b>Net B1c</b>	<b>Net B2</b>	<b>Net B8</b>	<b>Total Net 'B' Uses</b>	<b>Total Net Other Uses</b>
CT	N	0.02		-69	0	0	0	0	-69	0
Address		App Ref	Description	Gross B1a	Gross B1b	Gross B1c	Gross B2	Gross B8	Total Gross 'B' Uses	Total Gross Other Uses
376 Clapham Road, SW9 9AR		10/04437/FUL	Change of use to use class D1 (non-residential institution) at first floor level.	0	0	0	0	0	0	965
		<b>Approval Date</b>								
		17/02/2011								
<b>Ward</b>	<b>In KIBA?</b>	<b>Site Area (Ha)</b>		<b>Net B1a</b>	<b>Net B1b</b>	<b>Net B1c</b>	<b>Net B2</b>	<b>Net B8</b>	<b>Total Net 'B' Uses</b>	<b>Total Net Other Uses</b>
L	N	0.1		0	0	-965	0	0	-965	965
Address		App Ref	Description	Gross B1a	Gross B1b	Gross B1c	Gross B2	Gross B8	Total Gross 'B' Uses	Total Gross Other Uses
17 Claylands Place, SW8 1LN		05/01473/FUL	Use of part ground floor as class B1 studio/workshop with residential accommodation on part ground and first floor. This is a revised application to planning permission 99/01933/FUL granted on 06.01.2000.	0	133	0	0	0	133	0
		<b>Approval Date</b>								
		01/08/2005								
<b>Ward</b>	<b>In KIBA?</b>	<b>Site Area (Ha)</b>		<b>Net B1a</b>	<b>Net B1b</b>	<b>Net B1c</b>	<b>Net B2</b>	<b>Net B8</b>	<b>Total Net 'B' Uses</b>	<b>Total Net Other Uses</b>
O	N	0.01		0	133	0	0	0	133	0

All measurements are of gross internal floorspace in metres squared (m<sup>2</sup>)

**Table 18. 'B' Class Floorspace Under Construction 2010/2011**

Address		App Ref	Description	Gross B1a	Gross B1b	Gross B1c	Gross B2	Gross B8	Total Gross 'B' Uses	Total Gross Other Uses
Winchester House 9-13 Cranmer Road London SW9 6EJ		10/00381/FUL	Change of use of the ground floor to Vocational training centre (Use Class D1) or Business/General Industrial/Storage & Distribution (Use Classes B1/B2/B8).	0	0	0	0	0	0	0
		<b>Approval Date</b>		<b>Net B1a</b>	<b>Net B1b</b>	<b>Net B1c</b>	<b>Net B2</b>	<b>Net B8</b>	<b>Total Net 'B' Uses</b>	<b>Total Net Other Uses</b>
		08/04/2010		0	0	0	0	-694	-694	0
<b>Ward</b>	<b>In KIBA?</b>	<b>Site Area (Ha)</b>								
V	Y	0.07								
Address		App Ref	Description	Gross B1a	Gross B1b	Gross B1c	Gross B2	Gross B8	Total Gross 'B' Uses	Total Gross Other Uses
3-5 Cawnpore Street, 99-107 Woodland Road And Rear Of 72-88 Gipsy Hill, SE19 1PR		07/02886/FUL	Redevelopment of the site involving the demolition of the existing buildings and erection of two buildings ranging from 3 to 5 storeys in height with basement level to provide 268sqm of Class B1 Office floorspace and 54 self-contained flats.	268	0	0	0	0	268	0
		<b>Approval Date</b>		<b>Net B1a</b>	<b>Net B1b</b>	<b>Net B1c</b>	<b>Net B2</b>	<b>Net B8</b>	<b>Total Net 'B' Uses</b>	<b>Total Net Other Uses</b>
		01/11/2007		-889	0	0	0	0	-889	0
<b>Ward</b>	<b>In KIBA?</b>	<b>Site Area (Ha)</b>								
GH	N	0.23								
Address		App Ref	Description	Gross B1a	Gross B1b	Gross B1c	Gross B2	Gross B8	Total Gross 'B' Uses	Total Gross Other Uses
Estate Office, Block A Peabody Estate, Duchy Street, SE1 8DS		07/00178/FUL	Change of use of existing estate office into two bed self contained flat with disabled access.	0	0	0	0	0	0	0
		<b>Approval Date</b>		<b>Net B1a</b>	<b>Net B1b</b>	<b>Net B1c</b>	<b>Net B2</b>	<b>Net B8</b>	<b>Total Net 'B' Uses</b>	<b>Total Net Other Uses</b>
		30/03/2007		-74	0	0	0	0	-74	0
<b>Ward</b>	<b>In KIBA?</b>	<b>Site Area (Ha)</b>								
B	N	0.02								
Address		App Ref	Description	Gross B1a	Gross B1b	Gross B1c	Gross B2	Gross B8	Total Gross 'B' Uses	Total Gross Other Uses
16 Gipsy Hill, SE19 1NL		07/04739/FUL	Change of use from warehouse/storage (B8) to residential (C3) to provide 9 self-contained flats.	0	0	0	0	0	0	0
		<b>Approval Date</b>		<b>Net B1a</b>	<b>Net B1b</b>	<b>Net B1c</b>	<b>Net B2</b>	<b>Net B8</b>	<b>Total Net 'B' Uses</b>	<b>Total Net Other Uses</b>
		14/02/2008		0	0	0	0	-310	-310	0
<b>Ward</b>	<b>In KIBA?</b>	<b>Site Area (Ha)</b>								
GH	N	0.04								

All measurements are of gross internal floorspace in metres squared (m<sup>2</sup>)

**Table 18. 'B' Class Floorspace Under Construction 2010/2011**

Address		App Ref	Description	Gross B1a	Gross B1b	Gross B1c	Gross B2	Gross B8	Total Gross 'B' Uses	Total Gross Other Uses	
Site between 1 & 3 Harbour Road SE5 9PD		08/00286/FUL	Demolition of existing outbuilding and creation of a mixed residential and commercial development with a part two, part three storey with commercial space on the ground floor and residential on the first and second floors and an additional two storey mews to the rear.	77	0	0	0	0	77	0	
		<b>Approval Date</b>		29/07/2008	<b>Net B1a</b>	<b>Net B1b</b>	<b>Net B1c</b>	<b>Net B2</b>	<b>Net B8</b>	<b>Total Net 'B' Uses</b>	<b>Total Net Other Uses</b>
		<b>Ward</b>		<b>In KIBA?</b>	<b>Site Area (Ha)</b>	-77	0	0	0	325	248
HH	N	0.03									
Address		App Ref	Description	Gross B1a	Gross B1b	Gross B1c	Gross B2	Gross B8	Total Gross 'B' Uses	Total Gross Other Uses	
5 and 6 Nettlefold Place, SE27 0JW		07/04268/FUL	Change of use from Printing Works (Use Class B2), erection of a part 2nd floor level extension to provide 2 commercial units at ground floor level (Use Class B1) and 8 Residential units (Use Class C3).	140	87	0	0	0	227	0	
		<b>Approval Date</b>		14/01/2008	<b>Net B1a</b>	<b>Net B1b</b>	<b>Net B1c</b>	<b>Net B2</b>	<b>Net B8</b>	<b>Total Net 'B' Uses</b>	<b>Total Net Other Uses</b>
		<b>Ward</b>		<b>In KIBA?</b>	<b>Site Area (Ha)</b>	140	87	0	-580	0	-353
KH	N	0.07									
Address		App Ref	Description	Gross B1a	Gross B1b	Gross B1c	Gross B2	Gross B8	Total Gross 'B' Uses	Total Gross Other Uses	
Clapham Park Estate Poynders Road Atkins Road SW2		06/03680/OUT	A residential-led mixed use regeneration of approximately 36 hectares of land comprising the demolition of buildings (including up to 1,037 residential units (Class C3)	1,277	0	1,192	0	0	2,469	11,299	
		<b>Approval Date</b>		11/09/2008	<b>Net B1a</b>	<b>Net B1b</b>	<b>Net B1c</b>	<b>Net B2</b>	<b>Net B8</b>	<b>Total Net 'B' Uses</b>	<b>Total Net Other Uses</b>
		<b>Ward</b>		<b>In KIBA?</b>	<b>Site Area (Ha)</b>	277	0	1,192	0	0	1,469
T	N	35.86									
Address		App Ref	Description	Gross B1a	Gross B1b	Gross B1c	Gross B2	Gross B8	Total Gross 'B' Uses	Total Gross Other Uses	
1 Scout Lane, SW4 0LA		08/00690/FUL	Demolition of existing building and construction of a two storey commercial office building (Class B1) involving landscaping to the front and rear with the provision of cycle storage.	259	0	0	0	0	259	0	
		<b>Approval Date</b>		08/05/2008	<b>Net B1a</b>	<b>Net B1b</b>	<b>Net B1c</b>	<b>Net B2</b>	<b>Net B8</b>	<b>Total Net 'B' Uses</b>	<b>Total Net Other Uses</b>
		<b>Ward</b>		<b>In KIBA?</b>	<b>Site Area (Ha)</b>	179	0	0	0	0	179
CT	N	0.02									

**Table 18. 'B' Class Floorspace Under Construction 2010/2011**

Address		App Ref	Description	Gross B1a	Gross B1b	Gross B1c	Gross B2	Gross B8	Total Gross 'B' Uses	Total Gross Other Uses	
346-358 South Lambeth Road, S W8 1UQ		06/00292/FUL	Change of use of first floor from commercial (Use Class B1) to residential (Use Class C3) together with the erection of a third storey extension to create 14 self contained flats on upper floors.	0	0	0	0	0	0	0	
		<b>Approval Date</b>		27/07/2007	<b>Net B1a</b>	<b>Net B1b</b>	<b>Net B1c</b>	<b>Net B2</b>	<b>Net B8</b>	<b>Total Net 'B' Uses</b>	<b>Total Net Other Uses</b>
		<b>Site Area (Ha)</b>		0.06	-900	0	0	0	0	-900	0
<b>Ward</b>	<b>In KIBA?</b>										
S	N										
Address		App Ref	Description	Gross B1a	Gross B1b	Gross B1c	Gross B2	Gross B8	Total Gross 'B' Uses	Total Gross Other Uses	
4 6 8 10 12 12a and 14 Southville, SW8 2PP		05/01561/FUL	Demolition of existing buildings on site and erection of a three storey building comprising 374m <sup>2</sup> office space (B1) at part ground floor and part basement level, together with 10 self contained flats.	374	0	0	0	0	374	0	
		<b>Approval Date</b>		16/05/2007	<b>Net B1a</b>	<b>Net B1b</b>	<b>Net B1c</b>	<b>Net B2</b>	<b>Net B8</b>	<b>Total Net 'B' Uses</b>	<b>Total Net Other Uses</b>
		<b>Site Area (Ha)</b>		0.09	374	0	0	0	-374	0	0
<b>Ward</b>	<b>In KIBA?</b>										
L	N										
Address		App Ref	Description	Gross B1a	Gross B1b	Gross B1c	Gross B2	Gross B8	Total Gross 'B' Uses	Total Gross Other Uses	
16A Stannary Street, SE11 4AA		07/05042/FUL	Redevelopment of site to provide a new building comprising ground and three upper floors with ground and first floor office/workshops and 2 x 2 bed apartments on second and third floor level, provision of four cycle parking stands.	288	0	0	0	0	288	0	
		<b>Approval Date</b>		13/02/2008	<b>Net B1a</b>	<b>Net B1b</b>	<b>Net B1c</b>	<b>Net B2</b>	<b>Net B8</b>	<b>Total Net 'B' Uses</b>	<b>Total Net Other Uses</b>
		<b>Site Area (Ha)</b>		0.02	288	0	0	-752	0	-464	0
<b>Ward</b>	<b>In KIBA?</b>										
P	Y										
Address		App Ref	Description	Gross B1a	Gross B1b	Gross B1c	Gross B2	Gross B8	Total Gross 'B' Uses	Total Gross Other Uses	
15 Stockwell Green and 78 Lingham Street, SW9		06/00186/FUL	Partial demolition of building and redevelopment of site varying in height from 3 to 9 storeys to accommodate a mixed use scheme comprising 290 residential flats, 7,655 m <sup>2</sup> of B1 office space, 9 retail units (A1/A2/A3/A4/A5).	7,655	0	0	0	0	7,655	1,956	
		<b>Approval Date</b>		25/10/2006	<b>Net B1a</b>	<b>Net B1b</b>	<b>Net B1c</b>	<b>Net B2</b>	<b>Net B8</b>	<b>Total Net 'B' Uses</b>	<b>Total Net Other Uses</b>
		<b>Site Area (Ha)</b>		1.25	4,731	0	0	0	-27,762	-23,031	1,956
<b>Ward</b>	<b>In KIBA?</b>										
L	N										

All measurements are of gross internal floorspace in metres squared (m<sup>2</sup>)

**Table 18. 'B' Class Floorspace Under Construction 2010/2011**

Address		App Ref	Description	Gross B1a	Gross B1b	Gross B1c	Gross B2	Gross B8	Total Gross 'B' Uses	Total Gross Other Uses
Various Sites within Stockwell Park & Rosart Estate, Rosart Street, Stockwell Park Walk, Brixton Road, SW9		06/01769/OUT	Outline application to determine the principle of layout, scale and access for the demolition of the existing buildings with alteration and refurbishment to residential buildings (491 dwellings) and the erection of new buildings to provide up to 542 new dwellings.	1,107	0	0	0	0	1107	2,755
		<b>Approval Date</b>		<b>Net B1a</b>	<b>Net B1b</b>	<b>Net B1c</b>	<b>Net B2</b>	<b>Net B8</b>	<b>Total Net 'B' Uses</b>	<b>Total Net Other Uses</b>
		23/03/2007								
<b>Ward</b>	<b>In KIBA?</b>	<b>Site Area (Ha)</b>								
F	N	7.91		317	0	0	0	0	317	1,255
Address		App Ref	Description	Gross B1a	Gross B1b	Gross B1c	Gross B2	Gross B8	Total Gross 'B' Uses	Total Gross Other Uses
Stockwell Primary School Stockwell Road London SW9 9TG		10/01082/RG3	Demolition of existing three storey building and outbuildings and the erection of a three storey school building (D1 Use Class) linked to the existing main school building to the north east of the school site, provision of single storey nursery building (D1 Use Class) .	0	0	0	0	0	0	1,216
		<b>Approval Date</b>		<b>Net B1a</b>	<b>Net B1b</b>	<b>Net B1c</b>	<b>Net B2</b>	<b>Net B8</b>	<b>Total Net 'B' Uses</b>	<b>Total Net Other Uses</b>
		02/07/2010								
<b>Ward</b>	<b>In KIBA?</b>	<b>Site Area (Ha)</b>								
F	N	0.68		-1,525	0	0	0	0	-1,525	822
Address		App Ref	Description	Gross B1a	Gross B1b	Gross B1c	Gross B2	Gross B8	Total Gross 'B' Uses	Total Gross Other Uses
44 to 46 Stockwell Road, SW9		07/00105/FUL	Temporary change of use of hostel/ property in multiple paying occupation rooms (Sui Generis) on the upper and lower ground floor levels to provide office space together with the formation of a temporary reception and access to the YMCA .	80	0	0	0	0	80	0
		<b>Approval Date</b>		<b>Net B1a</b>	<b>Net B1b</b>	<b>Net B1c</b>	<b>Net B2</b>	<b>Net B8</b>	<b>Total Net 'B' Uses</b>	<b>Total Net Other Uses</b>
		15/03/2007								
<b>Ward</b>	<b>In KIBA?</b>	<b>Site Area (Ha)</b>								
L	N	0.4		80	0	0	0	0	80	-80
Address		App Ref	Description	Gross B1a	Gross B1b	Gross B1c	Gross B2	Gross B8	Total Gross 'B' Uses	Total Gross Other Uses
43A Streatham Hill, SW2 4TP		05/01583/FUL	Redevelopment of the site involving the demolition of the existing buildings and the erection of a 4 storey building comprising 2 retail units at ground floor and 6 self contained flats on upper floors.	0	0	0	0	0	0	138
		<b>Approval Date</b>		<b>Net B1a</b>	<b>Net B1b</b>	<b>Net B1c</b>	<b>Net B2</b>	<b>Net B8</b>	<b>Total Net 'B' Uses</b>	<b>Total Net Other Uses</b>
		22/12/2005								
<b>Ward</b>	<b>In KIBA?</b>	<b>Site Area (Ha)</b>								
SH	N	0.02		-417	0	0	0	0	-417	138



**Table 18. 'B' Class Floorspace Under Construction 2010/2011**

Address		App Ref	Description	Gross B1a	Gross B1b	Gross B1c	Gross B2	Gross B8	Total Gross 'B' Uses	Total Gross Other Uses
4 6 8 10 12 12a 12b 14a And 14b Union Road And 342-344 Clapham Road, SW9		06/03159/FUL	Demolition of the existing buildings and erection of A1/B1 units, offices and self contained flats.	962	0	1,153	0	0	2,115	0
		Approval Date		Net B1a	Net B1b	Net B1c	Net B2	Net B8	Total Net 'B' Uses	Total Net Other Uses
		15/01/2007		152	0	1,153	0	-455	850	-213
Ward	In KIBA?	Site Area (Ha)								
L	Y	0.27								
Address		App Ref	Description	Gross B1a	Gross B1b	Gross B1c	Gross B2	Gross B8	Total Gross 'B' Uses	Total Gross Other Uses
Clapham North Business Centre 26-32 Voltaire Road London, SW4 6DH		09/01022/FUL	Partial demolition of existing buildings, erection of one 4-storey building, one 3-storey plus basement building and one 2-storey building, together with the retention of remaining buildings to provide small business incubator units (Use Class B1).	7,070	0	0	0	0	7,070	0
		Approval Date		Net B1a	Net B1b	Net B1c	Net B2	Net B8	Total Net 'B' Uses	Total Net Other Uses
		16/07/2009		2,606	0	0	0	0	2,606	0
Ward	In KIBA?	Site Area (Ha)								
CT	Y	0.43								
Address		App Ref	Description	Gross B1a	Gross B1b	Gross B1c	Gross B2	Gross B8	Total Gross 'B' Uses	Total Gross Other Uses
559 Wandsworth Road, SW8 3JD		05/03925/FUL	Demolition of existing building and construction of 4 residential units (comprising 3 x 1-bed and 1x 2-bed) with associated works.	0	0	0	0	0	0	0
		Approval Date		Net B1a	Net B1b	Net B1c	Net B2	Net B8	Total Net 'B' Uses	Total Net Other Uses
		29/05/2007		0	0	-121	0	0	-121	0
Ward	In KIBA?	Site Area (Ha)								
CT	N	0.02								
Address		App Ref	Description	Gross B1a	Gross B1b	Gross B1c	Gross B2	Gross B8	Total Gross 'B' Uses	Total Gross Other Uses
Shell Centre , 2-8 York Road, SE1 7LZ		01/02543/FUL	Redevelopment to provide to provide a mix of uses, together with the construction of an office building with ground floor retail on the existing podium to the south of the Shell Centre.	34,837	0	0	0	0	34,837	24,154
		Approval Date		Net B1a	Net B1b	Net B1c	Net B2	Net B8	Total Net 'B' Uses	Total Net Other Uses
		08/04/2004		34,837	0	0	0	0	34,837	24,154
Ward	In KIBA?	Site Area (Ha)								
B	N	2.04								

**Table 18. 'B' Class Floorspace Under Construction 2010/2011**

Address		App Ref	Description	Gross B1a	Gross B1b	Gross B1c	Gross B2	Gross B8	Total Gross 'B' Uses	Total Gross Other Uses
Elizabeth House, 39 York Road, SE1 7NQ		04/02704/FUL	Redevelopment by the erection of four new buildings to provide 104,477sq m. of offices and 2,183 sq m. of retail together with the erection of pedestrian bridges and the carrying out of associated highway works.	104,477	0	0	0	0	104,477	2,183
		<b>Approval Date</b>								
		14/03/2007								
Ward	In KIBA?	Site Area (Ha)		Net B1a	Net B1b	Net B1c	Net B2	Net B8	Total Net 'B' Uses	Total Net Other Uses
B	N	0.4		61,794	0	0	0	0	61,794	233

All measurements are of gross internal floorspace in metres squared (m<sup>2</sup>)

**Table 19. 'B' Class Floorspace Unimplemented Permissions 2010/2011**

Address		App Ref	Description	Gross B1a	Gross B1b	Gross B1c	Gross B2	Gross B8	Total Gross 'B' Uses	Total Gross Other Uses
173 to 175 Abbeville Road, SW4 9JJ		10/01882/FUL	Demolition of existing buildings to the rear and the erection of a single storey building to create a self contained flat.	0	0	0	0	0	0	0
		<b>Approval Date</b>		29/07/2010	<b>Net B1a</b>	<b>Net B1b</b>	<b>Net B1c</b>	<b>Net B2</b>	<b>Net B8</b>	<b>Total Net 'B' Uses</b>
<b>Ward</b>	<b>In KIBA?</b>	<b>Site Area (Ha)</b>		0	0	0	0	-59	-59	0
CC	N	0.02								
Address		App Ref	Description	Gross B1a	Gross B1b	Gross B1c	Gross B2	Gross B8	Total Gross 'B' Uses	Total Gross Other Uses
170-174 and 176-188 Acre Lane, SW2 5UL		10/01543/FUL	Demolition of all existing buildings on site and the erection of 3 buildings providing a total of 60 residential units (Use Class C3) (100% affordable housing) and 524 sqm of flexible commercial floorspace (Use Classes, A1, A2, A3, A4, A5, B1 and/or D1).	75	0	0	0	0	75	450
		<b>Approval Date</b>		25/08/2010	<b>Net B1a</b>	<b>Net B1b</b>	<b>Net B1c</b>	<b>Net B2</b>	<b>Net B8</b>	<b>Total Net 'B' Uses</b>
<b>Ward</b>	<b>In KIBA?</b>	<b>Site Area (Ha)</b>		75	0	0	0	-705	-630	150
F	N	0.6								
Address		App Ref	Description	Gross B1a	Gross B1b	Gross B1c	Gross B2	Gross B8	Total Gross 'B' Uses	Total Gross Other Uses
9 Advance Road, SE27 9LT		10/01264/FUL	Change of use to provide a training centre (Use Class D1) and car repair garage and MOT test centre (Use Class B2).	0	0	0	105	0	105	0
		<b>Approval Date</b>		28/05/2010	<b>Net B1a</b>	<b>Net B1b</b>	<b>Net B1c</b>	<b>Net B2</b>	<b>Net B8</b>	<b>Total Net 'B' Uses</b>
<b>Ward</b>	<b>In KIBA?</b>	<b>Site Area (Ha)</b>		-105	0	0	105	0	0	0
GH	N	0.01								
Address		App Ref	Description	Gross B1a	Gross B1b	Gross B1c	Gross B2	Gross B8	Total Gross 'B' Uses	Total Gross Other Uses
Wah Kwong House, 10 Albert Embankment, SE1 7SP		08/01136/FUL	Demolition and rebuilding to provide for the erection of a 15 storey aparthotel together with restaurant and residential penthouse.	0	0	0	0	0	0	5,631
		<b>Approval Date</b>		26/06/2008	<b>Net B1a</b>	<b>Net B1b</b>	<b>Net B1c</b>	<b>Net B2</b>	<b>Net B8</b>	<b>Total Net 'B' Uses</b>
<b>Ward</b>	<b>In KIBA?</b>	<b>Site Area (Ha)</b>		-3,290	0	0	0	0	-3,290	5,631
P	N	0.06								

**Table 19. 'B' Class Floorspace Unimplemented Permissions 2010/2011**

Address		App Ref	Description	Gross B1a	Gross B1b	Gross B1c	Gross B2	Gross B8	Total Gross 'B' Uses	Total Gross Other Uses
11A Bedford Road, SW4 7SH		10/03469/FUL	Demolition of existing workshop/office building and erection of three storey building comprising of three ground floor level business units (Use Class B1) along with two live-work units and two 2-bedroom self-contained flats.	159	0	159	0	0	318	43
		<b>Approval Date</b>		30/11/2010	<b>Net B1a</b>	<b>Net B1b</b>	<b>Net B1c</b>	<b>Net B2</b>	<b>Net B8</b>	<b>Total Net 'B' Uses</b>
<b>Ward</b>	<b>In KIBA?</b>	<b>Site Area (Ha)</b>		-30	0	-30	0	0	-60	43
L	N	0.02								
Address		App Ref	Description	Gross B1a	Gross B1b	Gross B1c	Gross B2	Gross B8	Total Gross 'B' Uses	Total Gross Other Uses
Plot Rear Of 226a to 228b Brixton Hill, New Park Road, SW2 4DU		08/03321/FUL	Erection of a two storey building for storage purposes.	0	0	0	0	160	160	0
		<b>Approval Date</b>		29/10/2008	<b>Net B1a</b>	<b>Net B1b</b>	<b>Net B1c</b>	<b>Net B2</b>	<b>Net B8</b>	<b>Total Net 'B' Uses</b>
<b>Ward</b>	<b>In KIBA?</b>	<b>Site Area (Ha)</b>		0	0	0	0	160	160	0
BH	N	0.02								
Address		App Ref	Description	Gross B1a	Gross B1b	Gross B1c	Gross B2	Gross B8	Total Gross 'B' Uses	Total Gross Other Uses
463-465 Brixton Road, SW9 8HL		09/00658/FUL	Part change of use of mixed use building from financial and professional services and Offices (Use Classes A2 and B1) with retention of the Financial and professional Services and Offices (Use Classes A2 and B1) and provision of 4 self contained flats.	257	0	0	0	0	257	228
		<b>Approval Date</b>		28/04/2009	<b>Net B1a</b>	<b>Net B1b</b>	<b>Net B1c</b>	<b>Net B2</b>	<b>Net B8</b>	<b>Total Net 'B' Uses</b>
<b>Ward</b>	<b>In KIBA?</b>	<b>Site Area (Ha)</b>		-14	0	0	0	0	-14	0
C	N	0.04								
Address		App Ref	Description	Gross B1a	Gross B1b	Gross B1c	Gross B2	Gross B8	Total Gross 'B' Uses	Total Gross Other Uses
17-23 Canterbury Grove, SE27 0NT		09/01023/FUL	Demolition of existing buildings and redevelopment of the site and the erection of 3 blocks of Part 3/part 4 storey flats providing 35 self contained residential units in total.	0	0	0	0	0	0	0
		<b>Approval Date</b>		03/07/2009	<b>Net B1a</b>	<b>Net B1b</b>	<b>Net B1c</b>	<b>Net B2</b>	<b>Net B8</b>	<b>Total Net 'B' Uses</b>
<b>Ward</b>	<b>In KIBA?</b>	<b>Site Area (Ha)</b>		-1,221	0	0	0	-560	-1,781	0
KH	N	0.29								

**Table 19. 'B' Class Floorspace Unimplemented Permissions 2010/2011**

Address		App Ref	Description	Gross B1a	Gross B1b	Gross B1c	Gross B2	Gross B8	Total Gross 'B' Uses	Total Gross Other Uses
53 Clapham Common South Side, SW4 9BX		10/03725/FUL	Conversion of existing building to provide two residential dwelling houses.	0	0	0	0	0	0	0
		<b>Approval Date</b>		20/02/2011						
<b>Ward</b>	<b>In KIBA?</b>	<b>Site Area (Ha)</b>		<b>Net B1a</b>	<b>Net B1b</b>	<b>Net B1c</b>	<b>Net B2</b>	<b>Net B8</b>	<b>Total Net 'B' Uses</b>	<b>Total Net Other Uses</b>
CC	N	0.08		-472	0	0	0	0	-472	0
Address		App Ref	Description	Gross B1a	Gross B1b	Gross B1c	Gross B2	Gross B8	Total Gross 'B' Uses	Total Gross Other Uses
151 Clapham Road, SW9 0PU		08/04482/FUL	Change of use from Sui generis mixed use to office/community/residential (Use Class B1 office, D1 Commercial Use and C3 residential use) including the provision of 4 flats, excavation and extensions at basement/lower ground floor level and at second floor level.	86	0	0	0	0	86	178
		<b>Approval Date</b>		11/02/2009						
<b>Ward</b>	<b>In KIBA?</b>	<b>Site Area (Ha)</b>		<b>Net B1a</b>	<b>Net B1b</b>	<b>Net B1c</b>	<b>Net B2</b>	<b>Net B8</b>	<b>Total Net 'B' Uses</b>	<b>Total Net Other Uses</b>
V	N	0.06		5	0	0	0	0	5	-20
Address		App Ref	Description	Gross B1a	Gross B1b	Gross B1c	Gross B2	Gross B8	Total Gross 'B' Uses	Total Gross Other Uses
Montagu House, 169 Clapham Road, SW9 0PU		09/01528/FUL	Change of use of front building to 5 residential flats (Use Class C3) and retention of offices (Use Class B1) to the existing rear extension.	0	0	0	0	0	0	0
		<b>Approval Date</b>		14/07/2009						
<b>Ward</b>	<b>In KIBA?</b>	<b>Site Area (Ha)</b>		<b>Net B1a</b>	<b>Net B1b</b>	<b>Net B1c</b>	<b>Net B2</b>	<b>Net B8</b>	<b>Total Net 'B' Uses</b>	<b>Total Net Other Uses</b>
V	N	0.05		-806	0	0	0	0	-806	0

All measurements are of gross internal floorspace in metres squared (m<sup>2</sup>)

**Table 19. 'B' Class Floorspace Unimplemented Permissions 2010/2011**

Address		App Ref	Description	Gross B1a	Gross B1b	Gross B1c	Gross B2	Gross B8	Total Gross 'B' Uses	Total Gross Other Uses
187-191 Clapham Road, SW9 0QE		10/03516/FUL	Demolition of existing buildings and structures and erection of a part 4 and part 5 storey building comprising a food retail unit (Use Class A1) at ground floor level and 65 residential units on the upper floors together with 20 designated car parking spaces.	0	0	0	0	0	0	1,011
		Approval Date		06/01/2011	Net B1a	Net B1b	Net B1c	Net B2	Net B8	Total Net 'B' Uses
Ward	In KIBA?	Site Area (Ha)		-460	0	0	0	-1,195	-1,655	1,011
S	N	0.29								
Address		App Ref	Description	Gross B1a	Gross B1b	Gross B1c	Gross B2	Gross B8	Total Gross 'B' Uses	Total Gross Other Uses
156 Clapham Park Road, SW4 7DE		10/03767/FUL	Change of use of ground and basement floors to provide a children centre/ pre school activity centre (Use Class D1)	0	0	0	0	0	0	271
		Approval Date		20/02/2011	Net B1a	Net B1b	Net B1c	Net B2	Net B8	Total Net 'B' Uses
Ward	In KIBA?	Site Area (Ha)		-271	0	0	0	0	-271	271
CC	Y	0.02								
Address		App Ref	Description	Gross B1a	Gross B1b	Gross B1c	Gross B2	Gross B8	Total Gross 'B' Uses	Total Gross Other Uses
Unit 3, Coldharbour Industrial Estate, 129-131 Coldharbour Lane, SE5 9NY		09/04167/FUL	Change of use to Use Class B1 and external works to the front and rear elevation involving the installation of new windows and doors and the removal of the existing roller shutter and replacement roofing material.	750	0	0	0	0	750	0
		Approval Date		12/02/2010	Net B1a	Net B1b	Net B1c	Net B2	Net B8	Total Net 'B' Uses
Ward	In KIBA?	Site Area (Ha)		750	0	0	0	-750	0	0
HH	Y	0.04								
Address		App Ref	Description	Gross B1a	Gross B1b	Gross B1c	Gross B2	Gross B8	Total Gross 'B' Uses	Total Gross Other Uses
368 to 372 Coldharbour Lane, SW9 8PL		10/02516/FUL	Redevelopment of the site involving the erection of a part 5 and a part 7 storey building with lower ground floor to provide 141 residential units and 923 SQM of commercial floorspace (Use Classes B1,A1 and A2).	307	0	0	0	0	307	614
		Approval Date		17/02/2011	Net B1a	Net B1b	Net B1c	Net B2	Net B8	Total Net 'B' Uses
Ward	In KIBA?	Site Area (Ha)		-1,843	0	-2,150	0	0	-3,993	614
C	N	0.43								

**Table 19. 'B' Class Floorspace Unimplemented Permissions 2010/2011**

Address		App Ref	Description	Gross B1a	Gross B1b	Gross B1c	Gross B2	Gross B8	Total Gross 'B' Uses	Total Gross Other Uses
120A Dalberg Road, SW2 1AP		10/02361/FUL	Demolition of existing garage and erection of 2 dwelling houses with basement.	0	0	0	0	0	0	0
		<b>Approval Date</b>		21/10/2010	<b>Net B1a</b>	<b>Net B1b</b>	<b>Net B1c</b>	<b>Net B2</b>	<b>Net B8</b>	<b>Total Net 'B' Uses</b>
<b>Ward</b>	<b>In KIBA?</b>	<b>Site Area (Ha)</b>		0	0	0	-129	0	-129	0
HH	N	0.04								
Address		App Ref	Description	Gross B1a	Gross B1b	Gross B1c	Gross B2	Gross B8	Total Gross 'B' Uses	Total Gross Other Uses
21 - 27 Dalton Street, SE27 9HS		08/01246/FUL	Change of use of first floor from office (Use Class B1) to 1 x 2 bedroom flat (Use Class C3).	0	0	0	0	0	0	0
		<b>Approval Date</b>		07/08/2008	<b>Net B1a</b>	<b>Net B1b</b>	<b>Net B1c</b>	<b>Net B2</b>	<b>Net B8</b>	<b>Total Net 'B' Uses</b>
<b>Ward</b>	<b>In KIBA?</b>	<b>Site Area (Ha)</b>		-110	0	0	0	0	-110	0
TP	N	0.01								
Address		App Ref	Description	Gross B1a	Gross B1b	Gross B1c	Gross B2	Gross B8	Total Gross 'B' Uses	Total Gross Other Uses
Kings College Hospital, Denmark Hill, SE5 9RS		08/04821/FUL	Redevelopment of a site to provide 3 storeys of accommodation in an extension adjoining existing hospital buildings for university research.	1,800	0	0	0	0	1,800	0
		<b>Approval Date</b>		14/04/2009	<b>Net B1a</b>	<b>Net B1b</b>	<b>Net B1c</b>	<b>Net B2</b>	<b>Net B8</b>	<b>Total Net 'B' Uses</b>
<b>Ward</b>	<b>In KIBA?</b>	<b>Site Area (Ha)</b>		1,350	0	0	0	0	1,350	0
HH	Y	0.05								
Address		App Ref	Description	Gross B1a	Gross B1b	Gross B1c	Gross B2	Gross B8	Total Gross 'B' Uses	Total Gross Other Uses
4 Dorset Road, SW8 1EJ		10/02756/FUL	Erection of a two-storey dwelling house (plus basement) with rooftop garden and enclosed access staircase.	0	0	0	0	0	0	0
		<b>Approval Date</b>		05/10/2010	<b>Net B1a</b>	<b>Net B1b</b>	<b>Net B1c</b>	<b>Net B2</b>	<b>Net B8</b>	<b>Total Net 'B' Uses</b>
<b>Ward</b>	<b>In KIBA?</b>	<b>Site Area (Ha)</b>		-98	0	0	0	0	-98	0
S	N	0.01								

**Table 19. 'B' Class Floorspace Unimplemented Permissions 2010/2011**

Address		App Ref	Description	Gross B1a	Gross B1b	Gross B1c	Gross B2	Gross B8	Total Gross 'B' Uses	Total Gross Other Uses		
Westminster Business Square, Durham Street, SE11 5JH		09/00598/FUL	Partial demolition of existing detached and attached buildings to the east of the site opposite Lilian Baylis School and redevelopment and remodelling of the site involving the erection of new buildings opposite Lilian Baylis School.	6,740	0	0	0	0	6,740	210		
		<b>Approval Date</b>		07/05/2009	<b>Net B1a</b>	<b>Net B1b</b>	<b>Net B1c</b>	<b>Net B2</b>	<b>Net B8</b>	<b>Total Net 'B' Uses</b>	<b>Total Net Other Uses</b>	
<b>Ward</b>	<b>In KIBA?</b>	<b>Site Area (Ha)</b>		O	Y	0.52	-2,658	0	0	0	0	-2,658
Address		App Ref	Description	Gross B1a	Gross B1b	Gross B1c	Gross B2	Gross B8	Total Gross 'B' Uses	Total Gross Other Uses		
8 Effra Parade, SW2 1PS		10/03368/FUL	Change of use of ground floor level to offices (Use Class B1) and associated alterations to the front facade at ground floor.	27	0	0	0	0	27	0		
		<b>Approval Date</b>		30/11/2010	<b>Net B1a</b>	<b>Net B1b</b>	<b>Net B1c</b>	<b>Net B2</b>	<b>Net B8</b>	<b>Total Net 'B' Uses</b>	<b>Total Net Other Uses</b>	
<b>Ward</b>	<b>In KIBA?</b>	<b>Site Area (Ha)</b>		HH	N	0.01	27	0	0	0	0	27
Address		App Ref	Description	Gross B1a	Gross B1b	Gross B1c	Gross B2	Gross B8	Total Gross 'B' Uses	Total Gross Other Uses		
63A Effra Road, SW2 1BZ		10/02517/FUL	Redevelopment of vacant site to provide 42 residential units, associated landscaping, cycle storage and 4 disabled parking bays.	0	0	0	0	0	0	0		
		<b>Approval Date</b>		20/12/2010	<b>Net B1a</b>	<b>Net B1b</b>	<b>Net B1c</b>	<b>Net B2</b>	<b>Net B8</b>	<b>Total Net 'B' Uses</b>	<b>Total Net Other Uses</b>	
<b>Ward</b>	<b>In KIBA?</b>	<b>Site Area (Ha)</b>		C	N	0.43	-4,280	0	0	0	0	-4,280
Address		App Ref	Description	Gross B1a	Gross B1b	Gross B1c	Gross B2	Gross B8	Total Gross 'B' Uses	Total Gross Other Uses		
2 Empress Mews, SE5 9BT		10/02241/FUL	Change of use from office (Use Class B1) to a live/work unit (Sui Generis).	0	0	0	0	0	0	0		
		<b>Approval Date</b>		27/10/2010	<b>Net B1a</b>	<b>Net B1b</b>	<b>Net B1c</b>	<b>Net B2</b>	<b>Net B8</b>	<b>Total Net 'B' Uses</b>	<b>Total Net Other Uses</b>	
<b>Ward</b>	<b>In KIBA?</b>	<b>Site Area (Ha)</b>		HH	N	0.01	-145	0	0	0	0	-145



**Table 19. 'B' Class Floorspace Unimplemented Permissions 2010/2011**

Address		App Ref	Description	Gross B1a	Gross B1b	Gross B1c	Gross B2	Gross B8	Total Gross 'B' Uses	Total Gross Other Uses
Units 9 and 10, Francis Bentley Mews, SW4 0EG		10/03836/FUL	Change of use to provide two self contained units (Use Class C3).	0	0	0	0	0	0	0
		Approval Date		07/01/2011	Net B1a	Net B1b	Net B1c	Net B2	Net B8	Total Net 'B' Uses
Ward	In KIBA?	Site Area (Ha)		-420	0	0	0	0	-420	0
CT	N	0.02								
Address		App Ref	Description	Gross B1a	Gross B1b	Gross B1c	Gross B2	Gross B8	Total Gross 'B' Uses	Total Gross Other Uses
113-125 Gauden Road, SW4 6LE		08/03213/FUL	Erection of a third and fourth floor level to provide 7 self contained flats (2 x 3 beds, 2 x 2 beds and 3 x 1 bed units) above existing B1 office building.	698	0	0	0	0	698	0
		Approval Date		04/11/2008	Net B1a	Net B1b	Net B1c	Net B2	Net B8	Total Net 'B' Uses
Ward	In KIBA?	Site Area (Ha)		-35	0	0	0	0	-35	0
L	N	0.05								
Address		App Ref	Description	Gross B1a	Gross B1b	Gross B1c	Gross B2	Gross B8	Total Gross 'B' Uses	Total Gross Other Uses
171 Gipsy Road, SE27 9QT		08/02373/FUL	Change of use from industrial to residential by redevelopment of the site with erection of: (i) a three storey building fronting Gipsy Road to provide 2 x 1bed (plus study) flats at first/second floor level over a shared vehicle and pedestrian entrance.	0	0	0	0	0	0	0
		Approval Date		21/08/2008	Net B1a	Net B1b	Net B1c	Net B2	Net B8	Total Net 'B' Uses
Ward	In KIBA?	Site Area (Ha)		0	0	-322	0	0	-322	0
GH	N	0.12								
Address		App Ref	Description	Gross B1a	Gross B1b	Gross B1c	Gross B2	Gross B8	Total Gross 'B' Uses	Total Gross Other Uses
193 Gipsy Road, SE27 9QY		08/01749/FUL	Change of use and conversion of bakery factory into 3 self contained flats ( 1 x 2 bed flat and 2 split level studio flats), involving the erection of a mansard roof extension.	0	0	0	0	0	0	0
		Approval Date		15/07/2008	Net B1a	Net B1b	Net B1c	Net B2	Net B8	Total Net 'B' Uses
Ward	In KIBA?	Site Area (Ha)		0	0	-125	0	0	-125	0
GH	N	0.02								

**Table 19. 'B' Class Floorspace Unimplemented Permissions 2010/2011**

Address		App Ref	Description	Gross B1a	Gross B1b	Gross B1c	Gross B2	Gross B8	Total Gross 'B' Uses	Total Gross Other Uses
7 Glasshouse Walk, SE11 5ES		08/01732/FUL	Removal of existing two storey portacabin between existing front and rear office space and removal of existing single storey portacabin on western side elevation. Erection of a part 2/part single storey extension with the two storey element to link front and rear office space and the single storey element to the western elevation.	443	0	0	0	0	443	0
		<b>Approval Date</b>		<b>Net B1a</b>	<b>Net B1b</b>	<b>Net B1c</b>	<b>Net B2</b>	<b>Net B8</b>	<b>Total Net 'B' Uses</b>	<b>Total Net Other Uses</b>
		14/07/2008								
<b>Ward</b>	<b>In KIBA?</b>	<b>Site Area (Ha)</b>								
P	N	0.18		63	0	0	0	0	63	0
Address		App Ref	Description	Gross B1a	Gross B1b	Gross B1c	Gross B2	Gross B8	Total Gross 'B' Uses	Total Gross Other Uses
Arch 259 to 260, Hardess Street, SE24 0HN		09/02686/FUL	Part change of use at first floor level to a cinema (Use Class D2) and the widening of the existing door to the front elevation.	0	410	0	0	0	410	120
		<b>Approval Date</b>		<b>Net B1a</b>	<b>Net B1b</b>	<b>Net B1c</b>	<b>Net B2</b>	<b>Net B8</b>	<b>Total Net 'B' Uses</b>	<b>Total Net Other Uses</b>
		28/10/2009								
<b>Ward</b>	<b>In KIBA?</b>	<b>Site Area (Ha)</b>								
HH	N	0.04		0	-120	0	0	0	-120	120
Address		App Ref	Description	Gross B1a	Gross B1b	Gross B1c	Gross B2	Gross B8	Total Gross 'B' Uses	Total Gross Other Uses
74 Josephine Avenue, SW2 2LA		10/02197/FUL	Demolition of existing garages to facilitate the erection of a single storey extension to the existing office building (Use Class B1a) and the provision of 4 new cycle parking spaces, making 6 in total.	46	0	0	0	0	46	0
		<b>Approval Date</b>		<b>Net B1a</b>	<b>Net B1b</b>	<b>Net B1c</b>	<b>Net B2</b>	<b>Net B8</b>	<b>Total Net 'B' Uses</b>	<b>Total Net Other Uses</b>
		08/09/2010								
<b>Ward</b>	<b>In KIBA?</b>	<b>Site Area (Ha)</b>								
TH	N	0.01		46	0	0	0	0	46	-46

All measurements are of gross internal floorspace in metres squared (m<sup>2</sup>)

**Table 19. 'B' Class Floorspace Unimplemented Permissions 2010/2011**

Address		App Ref	Description	Gross B1a	Gross B1b	Gross B1c	Gross B2	Gross B8	Total Gross 'B' Uses	Total Gross Other Uses
216 Kennington Road, SE11 6HR		10/03318/FUL	Change of use of southern end of building from an assembly and leisure use (Class D2) to a financial and professional services/business office use (Classes A2/B1a) at ground floor level with residential (Class C3) at first and second floor levels to accommodate 8 x two-bedroom flats.	180	0	0	0	0	180	180
		<b>Approval Date</b>		24/11/2010	<b>Net B1a</b>	<b>Net B1b</b>	<b>Net B1c</b>	<b>Net B2</b>	<b>Net B8</b>	<b>Total Net 'B' Uses</b>
<b>Ward</b>	<b>In KIBA?</b>	<b>Site Area (Ha)</b>		180	0	0	0	0	180	-851
P	N	0.17								
Address		App Ref	Description	Gross B1a	Gross B1b	Gross B1c	Gross B2	Gross B8	Total Gross 'B' Uses	Total Gross Other Uses
377 Kennington Road, SE11 4PT		07/04526/FUL	Change of use of the rear part of the ground floor from office (Use class B1) to ancillary residential accommodation (Use class C3)	54	0	0	0	0	54	0
		<b>Approval Date</b>		12/02/2009	<b>Net B1a</b>	<b>Net B1b</b>	<b>Net B1c</b>	<b>Net B2</b>	<b>Net B8</b>	<b>Total Net 'B' Uses</b>
<b>Ward</b>	<b>In KIBA?</b>	<b>Site Area (Ha)</b>		-106	0	0	0	0	-106	0
P	Y	0.02								
Address		App Ref	Description	Gross B1a	Gross B1b	Gross B1c	Gross B2	Gross B8	Total Gross 'B' Uses	Total Gross Other Uses
260 Knight's Hill, SE27 0QA		07/04754/FUL	Redevelopment of the site involving demolition of existing buildings and erection of a 3 storey building to provide 14 dwellings.	0	0	0	0	0	0	0
		<b>Approval Date</b>		01/05/2008	<b>Net B1a</b>	<b>Net B1b</b>	<b>Net B1c</b>	<b>Net B2</b>	<b>Net B8</b>	<b>Total Net 'B' Uses</b>
<b>Ward</b>	<b>In KIBA?</b>	<b>Site Area (Ha)</b>		0	0	0	-222	0	-222	0
KH	N	0.1								

All measurements are of gross internal floorspace in metres squared (m<sup>2</sup>)

**Table 19. 'B' Class Floorspace Unimplemented Permissions 2010/2011**

Address		App Ref	Description	Gross B1a	Gross B1b	Gross B1c	Gross B2	Gross B8	Total Gross 'B' Uses	Total Gross Other Uses	
1 Knight's Hill Square, SE27 0HP		10/02372/FUL	Change of use to D1 (Education Centre) to the rear of the ground floor and part of first floor level.	0	0	0	0	0	0	134	
		Approval Date		21/09/2010	Net B1a	Net B1b	Net B1c	Net B2	Net B8	Total Net 'B' Uses	Total Net Other Uses
		Ward		In KIBA?	Site Area (Ha)	-50	0	-84	0	0	-134
KH	Y	0.02									
Address		App Ref	Description	Gross B1a	Gross B1b	Gross B1c	Gross B2	Gross B8	Total Gross 'B' Uses	Total Gross Other Uses	
1 Lambeth High Street, SE1 7JN		08/01292/FUL	Erection of an infill extension on the 5th floor fronting Lambeth High Street and Lambeth Road.	4,970	0	0	0	0	4,970	0	
		Approval Date		10/07/2008	Net B1a	Net B1b	Net B1c	Net B2	Net B8	Total Net 'B' Uses	Total Net Other Uses
		Ward		In KIBA?	Site Area (Ha)	35	0	0	0	0	35
B	N	0.13									
Address		App Ref	Description	Gross B1a	Gross B1b	Gross B1c	Gross B2	Gross B8	Total Gross 'B' Uses	Total Gross Other Uses	
Becket House and York House, Lambeth Palace Road, SE1 7EU		08/00629/FUL	Demolition of York House and erection of a new building comprising of two basement levels, ground and fifteen upper floors of offices (B1), rooftop plant and a retail (class A1/A3/A4 use) and office (B1) unit.	44,411	0	0	0	0	44,411	0	
		Approval Date		23/05/2008	Net B1a	Net B1b	Net B1c	Net B2	Net B8	Total Net 'B' Uses	Total Net Other Uses
		Ward		In KIBA?	Site Area (Ha)	35,947	0	0	0	0	35,947
B	N	0.91									
Address		App Ref	Description	Gross B1a	Gross B1b	Gross B1c	Gross B2	Gross B8	Total Gross 'B' Uses	Total Gross Other Uses	
53 Lambeth Walk, SE11 6DX		09/00195/FUL	Extension and subdivision of existing workshop to provide one additional new workshop.	0	0	36	0	0	36	0	
		Approval Date		19/05/2009	Net B1a	Net B1b	Net B1c	Net B2	Net B8	Total Net 'B' Uses	Total Net Other Uses
		Ward		In KIBA?	Site Area (Ha)	0	0	3	0	0	3
B	N	0.01									

**Table 19. 'B' Class Floorspace Unimplemented Permissions 2010/2011**

Address		App Ref	Description	Gross B1a	Gross B1b	Gross B1c	Gross B2	Gross B8	Total Gross 'B' Uses	Total Gross Other Uses
143-145 Larkhall Lane, SW4 6RG		10/00679/FUL	Conversion of existing three storey office building fronting Larkhall Lane into 6 self contained flats. Demolition of existing two storey building towards the rear of the site and the erection of three 3 storey single dwelling houses.	0	0	0	0	0	0	0
		<b>Approval Date</b> 29/04/2010		<b>Net B1a</b>	<b>Net B1b</b>	<b>Net B1c</b>	<b>Net B2</b>	<b>Net B8</b>	<b>Total Net 'B' Uses</b>	<b>Total Net Other Uses</b>
<b>Ward</b>	<b>In KIBA?</b>	<b>Site Area (Ha)</b>		-986	0	0	0	0	-986	0
L	N	0.07								
Address		App Ref	Description	Gross B1a	Gross B1b	Gross B1c	Gross B2	Gross B8	Total Gross 'B' Uses	Total Gross Other Uses
73B Larkhall Rise, SW4 6HT		08/02120/FUL	Redevelopment of existing garage site to provide a three storey building containing eight self contained units with roof terraces and 3 offices (Use Class B1) at ground floor level.	330	0	0	0	0	330	0
		<b>Approval Date</b> 31/07/2008		<b>Net B1a</b>	<b>Net B1b</b>	<b>Net B1c</b>	<b>Net B2</b>	<b>Net B8</b>	<b>Total Net 'B' Uses</b>	<b>Total Net Other Uses</b>
<b>Ward</b>	<b>In KIBA?</b>	<b>Site Area (Ha)</b>		330	0	0	0	0	330	-330
CT	N	0.03								
Address		App Ref	Description	Gross B1a	Gross B1b	Gross B1c	Gross B2	Gross B8	Total Gross 'B' Uses	Total Gross Other Uses
9 Newport Street, SE11 6AJ		10/02534/FUL	Demolition of existing building and redevelopment of the site with the erection of a four storey building to provide retail unit (Use Class A1) at ground floor level and offices (Use Class B1) on the upper floors.	826	0	0	0	0	826	0
		<b>Approval Date</b> 06/10/2010		<b>Net B1a</b>	<b>Net B1b</b>	<b>Net B1c</b>	<b>Net B2</b>	<b>Net B8</b>	<b>Total Net 'B' Uses</b>	<b>Total Net Other Uses</b>
<b>Ward</b>	<b>In KIBA?</b>	<b>Site Area (Ha)</b>		826	0	0	0	-637	189	0
P	Y	0.02								

**Table 19. 'B' Class Floorspace Unimplemented Permissions 2010/2011**

Address		App Ref	Description	Gross B1a	Gross B1b	Gross B1c	Gross B2	Gross B8	Total Gross 'B' Uses	Total Gross Other Uses	
42-44 Norwood High Street, SE27 9NR		08/01656/FUL	Erection of a mansard roof extension to provide additional of-fice floor space at third floor.	500	0	0	0	0	500	0	
		<b>Approval Date</b>		10/07/2008	<b>Net B1a</b>	<b>Net B1b</b>	<b>Net B1c</b>	<b>Net B2</b>	<b>Net B8</b>	<b>Total Net 'B' Uses</b>	<b>Total Net Other Uses</b>
		<b>Site Area (Ha)</b>		0.17	125	0	0	0	0	125	0
<b>Ward</b>	<b>In KIBA?</b>										
KH	Y										
Address		App Ref	Description	Gross B1a	Gross B1b	Gross B1c	Gross B2	Gross B8	Total Gross 'B' Uses	Total Gross Other Uses	
118 Norwood High Street, SE27 9NH		09/04193/FUL	Change of use of rear ground floor extension from ancillary storage area (related to the retail use of the ground floor) to office (B1) and the insertion of domed velux windows.	60	0	0	0	0	60	0	
		<b>Approval Date</b>		04/03/2010	<b>Net B1a</b>	<b>Net B1b</b>	<b>Net B1c</b>	<b>Net B2</b>	<b>Net B8</b>	<b>Total Net 'B' Uses</b>	<b>Total Net Other Uses</b>
		<b>Site Area (Ha)</b>		0.01	60	0	0	0	0	60	-43
<b>Ward</b>	<b>In KIBA?</b>										
KH	N										
Address		App Ref	Description	Gross B1a	Gross B1b	Gross B1c	Gross B2	Gross B8	Total Gross 'B' Uses	Total Gross Other Uses	
Rear Of 254-264 Norwood Road, SE27		07/05107/FUL	Conversion of existing workshop buildings to three units for B1 use at ground floor and conversion of the first floor into 3 self contained flats comprising one 1-bed and two 2-bed units with the erection of first floor extensions over existing flat roofs.	79	0	79	0	0	158	0	
		<b>Approval Date</b>		16/10/2008	<b>Net B1a</b>	<b>Net B1b</b>	<b>Net B1c</b>	<b>Net B2</b>	<b>Net B8</b>	<b>Total Net 'B' Uses</b>	<b>Total Net Other Uses</b>
		<b>Site Area (Ha)</b>		0.03	79	0	79	-210	-193	-245	0
<b>Ward</b>	<b>In KIBA?</b>										
TP	N										
Address		App Ref	Description	Gross B1a	Gross B1b	Gross B1c	Gross B2	Gross B8	Total Gross 'B' Uses	Total Gross Other Uses	
Arches 276-292 Milkwood Road, SE24 0EZ		09/03305/FUL	Change of Use of arches to provide Shops, Restaurant & Cafes and Offices (Use Classes A1, A3 and B1).	310	0	0	0	0	310	591	
		<b>Approval Date</b>		20/12/2010	<b>Net B1a</b>	<b>Net B1b</b>	<b>Net B1c</b>	<b>Net B2</b>	<b>Net B8</b>	<b>Total Net 'B' Uses</b>	<b>Total Net Other Uses</b>
		<b>Site Area (Ha)</b>		0.09	310	0	-111	-341	0	-142	359
<b>Ward</b>	<b>In KIBA?</b>										
HH	N										

**Table 19. 'B' Class Floorspace Unimplemented Permissions 2010/2011**

Address		App Ref	Description	Gross B1a	Gross B1b	Gross B1c	Gross B2	Gross B8	Total Gross 'B' Uses	Total Gross Other Uses
53 55 57 59 and 63 Old Town, SW4		10/00891/FUL	Change of use of ground floor and basement level (in building C) to dual use class B1 and D2.	0	0	0	0	0	0	438
		<b>Approval Date</b>		10/06/2010						
<b>Ward</b>	<b>In KIBA?</b>	<b>Site Area (Ha)</b>		<b>Net B1a</b>	<b>Net B1b</b>	<b>Net B1c</b>	<b>Net B2</b>	<b>Net B8</b>	<b>Total Net 'B' Uses</b>	<b>Total Net Other Uses</b>
CT	N	0.04		-438	0	0	0	0	-438	438
Address		App Ref	Description	Gross B1a	Gross B1b	Gross B1c	Gross B2	Gross B8	Total Gross 'B' Uses	Total Gross Other Uses
10 Warwick House, Overton Road, SW9 7JP		10/04170/FUL	Change of use from offices (Use Class B1) to a dental/medical practice (Use Class D1).	0	0	0	0	0	0	66
		<b>Approval Date</b>		08/03/2011						
<b>Ward</b>	<b>In KIBA?</b>	<b>Site Area (Ha)</b>		<b>Net B1a</b>	<b>Net B1b</b>	<b>Net B1c</b>	<b>Net B2</b>	<b>Net B8</b>	<b>Total Net 'B' Uses</b>	<b>Total Net Other Uses</b>
C	N	0.01		-66	0	0	0	0	-66	66
Address		App Ref	Description	Gross B1a	Gross B1b	Gross B1c	Gross B2	Gross B8	Total Gross 'B' Uses	Total Gross Other Uses
2A Padfield Road, SE5 9AA		10/01926/FUL	Formation of a first floor level to provide additional office space for the existing ground floor studio/workshop.	0	0	83	0	0	83	0
		<b>Approval Date</b>		13/09/2010						
<b>Ward</b>	<b>In KIBA?</b>	<b>Site Area (Ha)</b>		<b>Net B1a</b>	<b>Net B1b</b>	<b>Net B1c</b>	<b>Net B2</b>	<b>Net B8</b>	<b>Total Net 'B' Uses</b>	<b>Total Net Other Uses</b>
HH	N	0.01		0	0	28	0	0	28	0
Address		App Ref	Description	Gross B1a	Gross B1b	Gross B1c	Gross B2	Gross B8	Total Gross 'B' Uses	Total Gross Other Uses
121A Park Hill, SW4 9NX		10/02165/FUL	Change of use and conversion of property from garage/car repair workshop (Use Class B2) to residential use (Use Class C3) to provide 2 self contained houses.	0	0	0	0	0	0	0
		<b>Approval Date</b>		01/09/2010						
<b>Ward</b>	<b>In KIBA?</b>	<b>Site Area (Ha)</b>		<b>Net B1a</b>	<b>Net B1b</b>	<b>Net B1c</b>	<b>Net B2</b>	<b>Net B8</b>	<b>Total Net 'B' Uses</b>	<b>Total Net Other Uses</b>
CC	N	0.02		0	0	0	-115	0	-115	0

**Table 19. 'B' Class Floorspace Unimplemented Permissions 2010/2011**

Address		App Ref	Description	Gross B1a	Gross B1b	Gross B1c	Gross B2	Gross B8	Total Gross 'B' Uses	Total Gross Other Uses
17 Porden Road, SW2 5SA		10/04174/FUL	Formation of a car park for a temporary period of three years with 33 car parking spaces and associated lighting, ticket machines and provision of a crossover.	0	0	0	0	0	0	132
		<b>Approval Date</b>		04/03/2011	<b>Net B1a</b>	<b>Net B1b</b>	<b>Net B1c</b>	<b>Net B2</b>	<b>Net B8</b>	<b>Total Net 'B' Uses</b>
<b>Ward</b>	<b>In KIBA?</b>	<b>Site Area (Ha)</b>		0	0	0	0	-132	-132	132
BH	N	0.09								
Address		App Ref	Description	Gross B1a	Gross B1b	Gross B1c	Gross B2	Gross B8	Total Gross 'B' Uses	Total Gross Other Uses
17 Prescott Place, SW4 6BS		08/01824/FUL	Erection of a ground floor single storey extension to create a new entrance and ups store, alterations to fenestration and doors to east and south elevations, installation of five new sky lights to ground floor roof.	369	0	0	0	0	369	0
		<b>Approval Date</b>		09/07/2008	<b>Net B1a</b>	<b>Net B1b</b>	<b>Net B1c</b>	<b>Net B2</b>	<b>Net B8</b>	<b>Total Net 'B' Uses</b>
<b>Ward</b>	<b>In KIBA?</b>	<b>Site Area (Ha)</b>		9	0	0	0	0	9	0
CT	N	0.02								
Address		App Ref	Description	Gross B1a	Gross B1b	Gross B1c	Gross B2	Gross B8	Total Gross 'B' Uses	Total Gross Other Uses
Land Adjoining 26 Radbourne Road, SE12 0EF		10/02317/FUL	Demolition of 2 existing garages and erection of a two storey building to provide a mixed use of office/meeting room (Sui Generis) at ground floor and studio flat (Class C3) on the first floor.	200	0	0	0	0	200	0
		<b>Approval Date</b>		31/08/2010	<b>Net B1a</b>	<b>Net B1b</b>	<b>Net B1c</b>	<b>Net B2</b>	<b>Net B8</b>	<b>Total Net 'B' Uses</b>
<b>Ward</b>	<b>In KIBA?</b>	<b>Site Area (Ha)</b>		200	0	0	0	0	200	-230
T	N	0.02								
Address		App Ref	Description	Gross B1a	Gross B1b	Gross B1c	Gross B2	Gross B8	Total Gross 'B' Uses	Total Gross Other Uses
Land to The Rear Of 96 St Julian's Farm Road, SE27 0RR		10/04274/FUL	Erection of a single storey three bedroom dwelling fronting Thurlby Road.	0	0	0	0	0	0	0
		<b>Approval Date</b>		04/03/2011	<b>Net B1a</b>	<b>Net B1b</b>	<b>Net B1c</b>	<b>Net B2</b>	<b>Net B8</b>	<b>Total Net 'B' Uses</b>
<b>Ward</b>	<b>In KIBA?</b>	<b>Site Area (Ha)</b>		0	0	0	0	-142	-142	0
KH	N	0.01								



**Table 19. 'B' Class Floorspace Unimplemented Permissions 2010/2011**

Address		App Ref	Description	Gross B1a	Gross B1b	Gross B1c	Gross B2	Gross B8	Total Gross 'B' Uses	Total Gross Other Uses
77-84 and 85-88 Stane Grove, SW9 9AL		09/04268/FUL	Change of use of ground and first floor levels to residential (Use Class C3) to provide 9 self contained flats involving the replacement and alterations to existing doors and windows to north, east and west elevations at ground floor level.	0	0	0	0	0	0	0
		<b>Approval Date</b>		15/02/2010	<b>Net B1a</b>	<b>Net B1b</b>	<b>Net B1c</b>	<b>Net B2</b>	<b>Net B8</b>	<b>Total Net 'B' Uses</b>
<b>Ward</b>	<b>In KIBA?</b>	<b>Site Area (Ha)</b>		-950	0	0	0	0	-950	0
L	N	0.08								
Address		App Ref	Description	Gross B1a	Gross B1b	Gross B1c	Gross B2	Gross B8	Total Gross 'B' Uses	Total Gross Other Uses
8 Station Rise, SE27 9BW		10/00157/FUL	Demolition of existing building and erection of part two, part-three storey building to provide offices (Use Class B1) on the front part of the ground floor and 9 x self-contained residential flats.	182	0	0	0	0	182	0
		<b>Approval Date</b>		25/02/2011	<b>Net B1a</b>	<b>Net B1b</b>	<b>Net B1c</b>	<b>Net B2</b>	<b>Net B8</b>	<b>Total Net 'B' Uses</b>
<b>Ward</b>	<b>In KIBA?</b>	<b>Site Area (Ha)</b>		182	0	-728	0	0	-546	0
TP	N	0.72								
Address		App Ref	Description	Gross B1a	Gross B1b	Gross B1c	Gross B2	Gross B8	Total Gross 'B' Uses	Total Gross Other Uses
2-7 Stockwell Green, SW9 9JF		08/03128/FUL	Demolition of existing A1 building and the erection of 3 storey setback courtyard mews development comprising 8 residential units (8 x 4 bedroom units) and 2 office units, with the provision of car parking, cycle and refuse storage.	547	0	0	0	0	547	0
		<b>Approval Date</b>		10/10/2008	<b>Net B1a</b>	<b>Net B1b</b>	<b>Net B1c</b>	<b>Net B2</b>	<b>Net B8</b>	<b>Total Net 'B' Uses</b>
<b>Ward</b>	<b>In KIBA?</b>	<b>Site Area (Ha)</b>		547	0	0	0	-404	143	0
L	N	0.09								
Address		App Ref	Description	Gross B1a	Gross B1b	Gross B1c	Gross B2	Gross B8	Total Gross 'B' Uses	Total Gross Other Uses
152 - 166 Stockwell Road, SW9 9TQ		10/03949/FUL	Change of use at ground floor level to provide retail (Use Class A1) at number 152, 154-156, 158-160, 162 and 164 numbers.	0	0	0	0	0	0	221
		<b>Approval Date</b>		20/01/2011	<b>Net B1a</b>	<b>Net B1b</b>	<b>Net B1c</b>	<b>Net B2</b>	<b>Net B8</b>	<b>Total Net 'B' Uses</b>
<b>Ward</b>	<b>In KIBA?</b>	<b>Site Area (Ha)</b>		-140	0	0	0	0	-140	88
F	N	0.42								

**Table 19. 'B' Class Floorspace Unimplemented Permissions 2010/2011**

Address		App Ref	Description	Gross B1a	Gross B1b	Gross B1c	Gross B2	Gross B8	Total Gross 'B' Uses	Total Gross Other Uses
145 Streatham High Road, SW16 6EG		10/04281/FUL	Change of use of first floor to provide a self contained flat involving the erection of a first floor rear extension, together with the provision of refuse and cycle storage.	0	0	0	0	0	0	0
		<b>Approval Date</b>		03/03/2011	<b>Net B1a</b>	<b>Net B1b</b>	<b>Net B1c</b>	<b>Net B2</b>	<b>Net B8</b>	<b>Total Net 'B' Uses</b>
<b>Ward</b>	<b>In KIBA?</b>	<b>Site Area (Ha)</b>		-105	0	0	0	0	-105	0
SL	N	0.01								
Address		App Ref	Description	Gross B1a	Gross B1b	Gross B1c	Gross B2	Gross B8	Total Gross 'B' Uses	Total Gross Other Uses
Land At Numbers 382, 386, 388 And 390 Streatham High Road SW16 6HX		02/02557/FUL	Redevelopment of existing buildings on site to provide a leisure complex (ice rink, swimming pool, health and fitness facilities and community uses), 250 residential units, including affordable housing, a retail store, bus lay-over and public square.	0	0	0	0	0	0	19,650
		<b>Approval Date</b>		30/11/2007	<b>Net B1a</b>	<b>Net B1b</b>	<b>Net B1c</b>	<b>Net B2</b>	<b>Net B8</b>	<b>Total Net 'B' Uses</b>
<b>Ward</b>	<b>In KIBA?</b>	<b>Site Area (Ha)</b>		0	0	0	0	-1,000	-1,000	11,650
SL	N	2.4								
Address		App Ref	Description	Gross B1a	Gross B1b	Gross B1c	Gross B2	Gross B8	Total Gross 'B' Uses	Total Gross Other Uses
512 - 522 Streatham High Road, SW16 3QF		08/03715/FUL	Demolition of existing buildings and the erection of a four storey building (plus basement) comprising 12,961 sq m of self storage floorspace (Class B8) and 619 sq m of offices (Class B1).	619	0	0	0	12,961	13,580	0
		<b>Approval Date</b>		18/12/2008	<b>Net B1a</b>	<b>Net B1b</b>	<b>Net B1c</b>	<b>Net B2</b>	<b>Net B8</b>	<b>Total Net 'B' Uses</b>
<b>Ward</b>	<b>In KIBA?</b>	<b>Site Area (Ha)</b>		619	0	-4,000	0	12,961	9,580	0
SS	N	0.4								

All measurements are of gross internal floorspace in metres squared (m<sup>2</sup>)

**Table 19. 'B' Class Floorspace Unimplemented Permissions 2010/2011**

Address		App Ref	Description	Gross B1a	Gross B1b	Gross B1c	Gross B2	Gross B8	Total Gross 'B' Uses	Total Gross Other Uses
142-170 Streatham Hill and Wentworth House, 10 Sternhold Avenue, SW2 4RU		10/00507/FUL	Demolition of the existing buildings and redevelopment to provide a mixed use scheme in a building ranging in height from 2 to 8 storeys containing 3,786m <sup>2</sup> retail space (A1, A2 & A3) including servicing and storage) 187 m <sup>2</sup> community floor space (D1), 840 m <sup>2</sup> assembly/leisure use (D2), together with 243 flats.	0	0	0	0	0	0	4,813
		<b>Approval Date</b>								
		20/05/2010								
<b>Ward</b>	<b>In KIBA?</b>	<b>Site Area (Ha)</b>		<b>Net B1a</b>	<b>Net B1b</b>	<b>Net B1c</b>	<b>Net B2</b>	<b>Net B8</b>	<b>Total Net 'B' Uses</b>	<b>Total Net Other Uses</b>
SH	N	0.81		-861	0	0	0	0	-861	-2,666
Address		App Ref	Description	Gross B1a	Gross B1b	Gross B1c	Gross B2	Gross B8	Total Gross 'B' Uses	Total Gross Other Uses
22 And 24 Tulse Hill, London, SW2 2TP		08/01615/FUL	Demolition of existing building and garages to the rear and the erection of a 4 storey building comprising 1 x A1 retail unit, 2 x B1 artist studios and 4 x 1 bed units and the erection of a 3 storey building to the rear containing 2 x 3 bed and 2 x 1 bed flats.	0	79	0	0	0	79	71
		<b>Approval Date</b>								
		26/06/2008								
<b>Ward</b>	<b>In KIBA?</b>	<b>Site Area (Ha)</b>		<b>Net B1a</b>	<b>Net B1b</b>	<b>Net B1c</b>	<b>Net B2</b>	<b>Net B8</b>	<b>Total Net 'B' Uses</b>	<b>Total Net Other Uses</b>
TH	N	0.03		0	79	0	0	0	79	-212
Address		App Ref	Description	Gross B1a	Gross B1b	Gross B1c	Gross B2	Gross B8	Total Gross 'B' Uses	Total Gross Other Uses
68 Venn Street, SW4 0AT		08/02892/FUL	Excavation to provide a basement level storage area to existing offices at ground floor level and provision of an access lobby.	76	0	0	0	0	76	0
		<b>Approval Date</b>								
		03/11/2008								
<b>Ward</b>	<b>In KIBA?</b>	<b>Site Area (Ha)</b>		<b>Net B1a</b>	<b>Net B1b</b>	<b>Net B1c</b>	<b>Net B2</b>	<b>Net B8</b>	<b>Total Net 'B' Uses</b>	<b>Total Net Other Uses</b>
CT	N	0.13		76	0	0	0	0	76	0

All measurements are of gross internal floorspace in metres squared (m<sup>2</sup>)

**Table 19. 'B' Class Floorspace Unimplemented Permissions 2010/2011**

Address		App Ref	Description	Gross B1a	Gross B1b	Gross B1c	Gross B2	Gross B8	Total Gross 'B' Uses	Total Gross Other Uses
143-161 Wandsworth Road, SW8 2LY		09/04322/FUL	Redevelopment of the site involving the demolition of existing buildings and the erection of a part one storey, part eight storey and part 36 storey plus basement building to provide a mixed use development comprising ground floor commercial units.	4,722	0	0	0	0	4,722	256
		<b>Approval Date</b>		<b>Net B1a</b>	<b>Net B1b</b>	<b>Net B1c</b>	<b>Net B2</b>	<b>Net B8</b>	<b>Total Net 'B' Uses</b>	<b>Total Net Other Uses</b>
		01/09/2010		4,722	0	0	0	-2,240	2,482	256
<b>Ward</b>	<b>In KIBA?</b>	<b>Site Area (Ha)</b>								
O	N	0.19								
Address		App Ref	Description	Gross B1a	Gross B1b	Gross B1c	Gross B2	Gross B8	Total Gross 'B' Uses	Total Gross Other Uses
202 - 230 Wandsworth Road, SW8 2JZ		10/02442/FUL	Change of use of Unit 3 to an office (Use Class B1).	702	0	0	0	0	702	0
		<b>Approval Date</b>		<b>Net B1a</b>	<b>Net B1b</b>	<b>Net B1c</b>	<b>Net B2</b>	<b>Net B8</b>	<b>Total Net 'B' Uses</b>	<b>Total Net Other Uses</b>
		03/12/2010		702	0	0	0	0	702	-702
<b>Ward</b>	<b>In KIBA?</b>	<b>Site Area (Ha)</b>								
S	N	0.05								
Address		App Ref	Description	Gross B1a	Gross B1b	Gross B1c	Gross B2	Gross B8	Total Gross 'B' Uses	Total Gross Other Uses
642 Wandsworth Road, SW8 3JW		09/00495/FUL	Change of use at first floor level to Use Class A4 (Function room) and at second floor level two rooms from residential to Class B1 (Office) use.	28	0	0	0	0	28	104
		<b>Approval Date</b>		<b>Net B1a</b>	<b>Net B1b</b>	<b>Net B1c</b>	<b>Net B2</b>	<b>Net B8</b>	<b>Total Net 'B' Uses</b>	<b>Total Net Other Uses</b>
		23/04/2009		28	0	0	0	0	28	33
<b>Ward</b>	<b>In KIBA?</b>	<b>Site Area (Ha)</b>								
CT	N	0.02								
Address		App Ref	Description	Gross B1a	Gross B1b	Gross B1c	Gross B2	Gross B8	Total Gross 'B' Uses	Total Gross Other Uses
157 Waterloo Road, SE1 8XA		08/04374/FUL	Demolition of existing office building and re-development of the site to provide a part 9, part 8, part 5 storey plus basement 278 bed hotel.	0	0	0	0	0	0	11,193
		<b>Approval Date</b>		<b>Net B1a</b>	<b>Net B1b</b>	<b>Net B1c</b>	<b>Net B2</b>	<b>Net B8</b>	<b>Total Net 'B' Uses</b>	<b>Total Net Other Uses</b>
		16/02/2009		-16,100	0	0	0	0	-16,100	11,193
<b>Ward</b>	<b>In KIBA?</b>	<b>Site Area (Ha)</b>								
B	N	0.23								

**Table 19. 'B' Class Floorspace Unimplemented Permissions 2010/2011**

Address		App Ref	Description	Gross B1a	Gross B1b	Gross B1c	Gross B2	Gross B8	Total Gross 'B' Uses	Total Gross Other Uses
2-6 Weir Road, SW12 0NA		08/02907/FUL	Demolition of existing buildings and erection of part 1/part 2 storey warehouse building to include ancillary bulk timber store, sawmill and showroom.	0	0	0	1,033	1,033	2,066	383
		<b>Approval Date</b>		<b>Net B1a</b>	<b>Net B1b</b>	<b>Net B1c</b>	<b>Net B2</b>	<b>Net B8</b>	<b>Total Net 'B' Uses</b>	<b>Total Net Other Uses</b>
		24/10/2008		0	0	0	513	513	1,266	383
<b>Ward</b>	<b>In KIBA?</b>	<b>Site Area (Ha)</b>								
T	Y	0.34								
Address		App Ref	Description	Gross B1a	Gross B1b	Gross B1c	Gross B2	Gross B8	Total Gross 'B' Uses	Total Gross Other Uses
9 Weir Road, SW12 0LT		09/02616/FUL	Change of use of existing building to provide training facilities (Use Class D1).	0	0	0	0	0	0	182
		<b>Approval Date</b>		<b>Net B1a</b>	<b>Net B1b</b>	<b>Net B1c</b>	<b>Net B2</b>	<b>Net B8</b>	<b>Total Net 'B' Uses</b>	<b>Total Net Other Uses</b>
		06/09/2010		-182	0	0	0	0	-182	182
<b>Ward</b>	<b>In KIBA?</b>	<b>Site Area (Ha)</b>								
T	Y	0.02								
Address		App Ref	Description	Gross B1a	Gross B1b	Gross B1c	Gross B2	Gross B8	Total Gross 'B' Uses	Total Gross Other Uses
111 Westminster Bridge Road, SE1 7JD		10/02639/FUL	Demolition of the existing office building and redevelopment comprising the erection of a part seven, part ten storey building to provide a 154 room apart-hotel, with a 525m <sup>2</sup> restaurant/café (Use Class A3) and 2,066 m <sup>2</sup> serviced offices (Use Class B1a).	2,066	0	0	0	0	2,066	525
		<b>Approval Date</b>		<b>Net B1a</b>	<b>Net B1b</b>	<b>Net B1c</b>	<b>Net B2</b>	<b>Net B8</b>	<b>Total Net 'B' Uses</b>	<b>Total Net Other Uses</b>
		04/11/2010		-5,017	0	0	0	0	-5,017	525
<b>Ward</b>	<b>In KIBA?</b>	<b>Site Area (Ha)</b>								
B	N	0.15								
Address		App Ref	Description	Gross B1a	Gross B1b	Gross B1c	Gross B2	Gross B8	Total Gross 'B' Uses	Total Gross Other Uses
118-120 Westminster Bridge Road SE1 7XE		09/01360/FUL	Change of use of ground floor to hotel reception and coffee shop (Use Class C1) and (Use Class A1) and 79 bedroom hotel on lower ground and upper floor levels (Use Class C1).	0	0	0	0	0	0	1,412
		<b>Approval Date</b>		<b>Net B1a</b>	<b>Net B1b</b>	<b>Net B1c</b>	<b>Net B2</b>	<b>Net B8</b>	<b>Total Net 'B' Uses</b>	<b>Total Net Other Uses</b>
		11/08/2009		-1,312	0	0	0	0	-1,312	1,312
<b>Ward</b>	<b>In KIBA?</b>	<b>Site Area (Ha)</b>								
B	N	0.14								

**Table 19. 'B' Class Floorspace Unimplemented Permissions 2010/2011**

Address		App Ref	Description	Gross B1a	Gross B1b	Gross B1c	Gross B2	Gross B8	Total Gross 'B' Uses	Total Gross Other Uses
207 Streatham High Road, SW16 6EG		09/03851/FUL	Change of Use from vacant basement store, beneath ground floor shop to self-contained office (Use Class B1).	43	0	0	0	0	43	0
		<b>Approval Date</b>		25/05/2010	<b>Net B1a</b>	<b>Net B1b</b>	<b>Net B1c</b>	<b>Net B2</b>	<b>Net B8</b>	<b>Total Net 'B' Uses</b>
<b>Ward</b>	<b>In KIBA?</b>	<b>Site Area (Ha)</b>		43	0	0	0	-43	0	0
SL	N	0.01								
Address		App Ref	Description	Gross B1a	Gross B1b	Gross B1c	Gross B2	Gross B8	Total Gross 'B' Uses	Total Gross Other Uses
89 Walcot Square, SE11 4UB		09/04064/FUL	Conversion and change of use of property from office (B1 use Class) to provide a 2 bedroom self contained unit.	0	0	0	0	0	0	0
		<b>Approval Date</b>		30/03/2010	<b>Net B1a</b>	<b>Net B1b</b>	<b>Net B1c</b>	<b>Net B2</b>	<b>Net B8</b>	<b>Total Net 'B' Uses</b>
<b>Ward</b>	<b>In KIBA?</b>	<b>Site Area (Ha)</b>		-82	0	0	0	0	-82	0
P	N	0.01								
Address		App Ref	Description	Gross B1a	Gross B1b	Gross B1c	Gross B2	Gross B8	Total Gross 'B' Uses	Total Gross Other Uses
68 Venn Street, SW4 0AT		09/04085/FUL	Erection of a four storey building with basement to provide 861.71square meters of gross internal office and storage floor space (B1 Use Class).	862	0	0	0	0	862	0
		<b>Approval Date</b>		16/08/2010	<b>Net B1a</b>	<b>Net B1b</b>	<b>Net B1c</b>	<b>Net B2</b>	<b>Net B8</b>	<b>Total Net 'B' Uses</b>
<b>Ward</b>	<b>In KIBA?</b>	<b>Site Area (Ha)</b>		862	0	0	0	0	862	-356
CT	N	0.03								

All measurements are of gross internal floorspace in metres squared (m<sup>2</sup>)

**For further information contact:  
Lambeth Council Planning Service**

Phoenix House  
10 Wandsworth Road  
London  
SW8 2LL

Email : [PlanningPolicy@lambeth.gov.uk](mailto:PlanningPolicy@lambeth.gov.uk)  
Web : [www.lambeth.gov.uk/Planning](http://www.lambeth.gov.uk/Planning)

**Spanish**

Si desea esta información en otro idioma,  
rogamos nos llame al 020 7926 1259

**Portuguese**

Se desejar esta informação noutro idioma  
é favor telefonar para 020 7926 1259

**French**

Si vous souhaitez ces informations dans une  
autre langue veuillez nous contacter au 020 7926 1259

If you would like this information in large print, Braille, audio tape or another  
language, please contact us on 020 7926 1259

**Bengali**

এই তথ্য অন্য কোনো ভাষায় আপনার প্রয়োজন  
হলে অনুগ্রহ করে ফোন করুন 020 7926 1259

**Twi**

Se wope saa nkaeboy yi wo kasa foforo  
mu a fre 020 7926 1259

**Yoruba**

Tí ẹ ba ẹ imoràn yíí, ní èdè Òmíràn, ẹjǫ,  
ẹ kàn wà l'ágogo 020 7926 1259