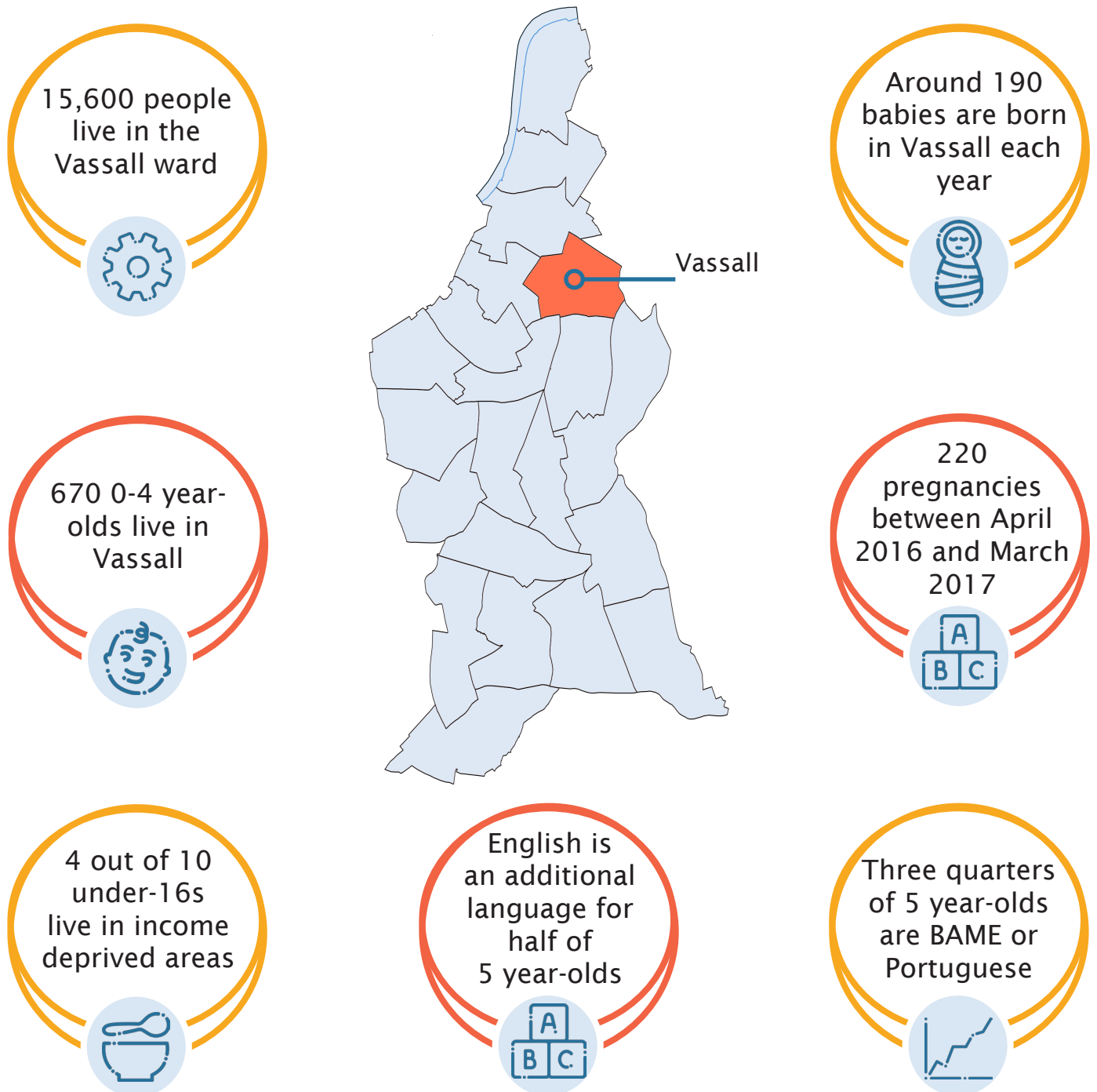


Early years at a glance

Vassall



Vassall's local population



15,600 people live in the Vassall ward



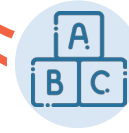
Around 190 babies are born in Vassall each year



670 0-4 year-olds live in Vassall



220 pregnancies between April 2016 and March 2017



4 out of 10 under-16s live in income deprived areas



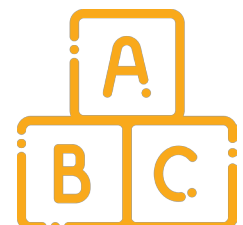
English is an additional language for half of 5 year-olds



Three quarters of 5 year-olds are BAME or Portuguese



Lambeth Early Action Partnership (LEAP) is an innovative programme to better the lives of thousands of children in the Lambeth community, focusing on the four wards of Stockwell, Coldharbour, Vassall and Tulse Hill.

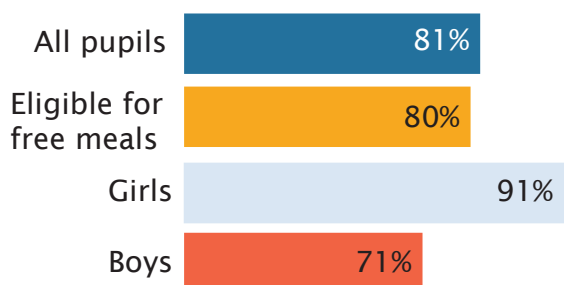


Early years at a glance

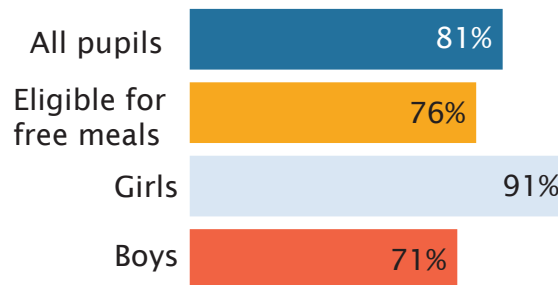
Vassall



Outcomes for children in Vassall



Good level of communication and language development age 5



Good level of social and emotional development age 5



Almost 1 in 4 children are overweight or obese at school entry



45% of 11 year-olds are overweight or obese

Lambeth Early Action Partnership (LEAP) is an innovative programme to better the lives of thousands of children in the Lambeth community, focusing on the four wards of Stockwell, Coldharbour, Vassall and Tulse Hill.

