

# Cultural Services by 2020







Ambulance

to the  
festival

The Streatham Festival, Streatham Common



An event in the new Clapham Library, 2012

**Public consultation starts**  
**Friday 30 January 2015**

**Public consultation ends**  
**Friday 24 April 2015**

## What's inside?

This is your chance to let us know what you think and influence proposals concerning the future provision of cultural services in Lambeth before decisions are taken. By cultural services we mean your local park, open space, library, the borough archives, sports and physical activities and the arts. We are proposing significant changes to the way cultural services in Lambeth are provided and this may include the council no longer providing a service.

## Contents

<b>Foreword</b>	<b>4</b>
<b>Introduction</b>	<b>5</b>
<b>How we got here</b>	<b>8</b>
<b>Let's get active</b>	<b>10</b>
<b>Safe and interesting spaces</b>	<b>14</b>
<b>The great outdoors</b>	<b>20</b>
<b>The arts</b>	<b>24</b>
<b>Invest to create</b>	<b>26</b>
<b>How to get involved</b>	<b>27</b>



## Foreword by Cllr Jane Edbrooke

**I love Lambeth because there's so much going on. From Zumba classes to bat walks, the Southbank Centre and Brixton Academy, new leisure centres in Streatham, Norwood and Clapham, parks and open spaces, open air gyms, a new cinema to Norwood and the libraries in Clapham and Streatham, the Black Cultural Archives and food festivals and street markets.**

I want everyone to have the opportunity to do something they enjoy. That's partly about having great facilities but you and I know that being active, meeting people, watching a play or listening to music is good for us. It makes us happier and healthier so it's important that people in Lambeth have access to affordable, varied activities.

We've had thousands of conversations with people over the last few years about libraries, parks, sports facilities and events. I'd like to thank everyone who's shared their experiences and ideas – they've all helped shape the proposals set out in this document.

Obviously having good facilities costs money and I'll be honest about what we can afford. By 2018 we're going to have just over half what we had in the budget for these services in 2013-14. This document explains how we intend to make financial savings and how that might mean changes.

With our population expected to increase by more than 30,000 in the next 10 years we need to use some of our assets to have money to invest more widely. For example, we're proposing to sell Waterloo and Minet libraries and use the money to help create a £10million endowment fund for promoting literacy and the love of reading. We're proposing to have five town centre libraries and four community libraries across the borough and having that money means we can invest in and look after them.

We're proposing to work with local people and partners across Lambeth to transform how cultural services are provided. In some cases the council will do less, stand back, and let others take the lead. Some organisations are already stepping up and taking over, for example SCCoop are now managing the Rookery at Streatham Common in association with the council.

What I need from you now is to help me understand whether we're going in the right direction. In particular we're consulting on the proposals for Lambeth's libraries, along with events in parks and a draft sports strategy. Of course, we'll continue to have conversations about what else we need; how we can make the most of what we have; and how you're willing to help us achieve our ambitions by 2020.



**Cllr Jane Edbrooke, Cabinet Member for Neighbourhoods**

### **Our ambition is that by 2020:**

- No matter where you live in Lambeth you'll be within 20 minutes average walking time from affordable activities which will improve your health and wellbeing.
- 85% of Lambeth's population take part in regular cultural, sports and physical activities.
- All residents have access to a range of affordable, excellent facilities for cultural, sports and physical activities.

## Introduction: Healthier, happier lives

We all know that regular physical activity and cultural stimulation contributes positively to emotional and mental wellbeing by preventing and reducing stress, anxiety and depression. So we want to make the most of the borough's cultural, physical and sports assets to help local people live healthier, happier lives.

We plan to make sure the provision of cultural services in the borough will be financially sustainable for future generations.

We want to encourage more people to take part in physical activity and sport on a regular basis but people will also have to take more responsibility for managing their own health and wellbeing needs.

Evidence suggests that being more physically active helps prevent older people from having falls, improves self-confidence and independence. Many leading causes of ill health such as coronary disease, cancer and type two diabetes can be prevented if those at risk were to become more active.

**Lack of physical activity leads to an estimated 37,000 premature deaths in England every year and 126 in Lambeth alone. Sport England estimates the cost of inactivity in Lambeth was over £4.8m in 2009/10. In 2014, 63% of Lambeth residents were engaged in regular exercise or physical activity.**

### What does success look like in 2020?

- Increased pupil attainment levels in classroom learning, and skills development, training and employment.
- Improved physical and mental health for everyone, but especially those most at risk of ill health.
- Improved community safety by providing positive activities for people, and championing shared community and citizen responsibility.
- Being a catalyst for regeneration through capital investment to secure high quality architecture and public spaces.

**West Norwood Leisure centre opened July 2014 and was the third leisure centre to be opened by Lambeth Council in the past three years. It is part of a bigger, integrated centre for health and wellbeing, which includes a GP practice and dental academy, and is the first time joint health and leisure facilities have come together in the area.**



Out for a walk on Streatham Common





The popular parent and toddler session at Brixton Library

## An increasing population

At least 300,000 people live in Lambeth which is more than twice the London population density. Lambeth's population is predicted to grow by almost a quarter in the next 20 years.

**By 2024, there'll be an extra 31,852 people in the borough. But there will be 1,201 (3.6%) fewer 16-24 year olds and 9,612 (42.5%) more people aged 55-64.**

Women and older people remain those considered most at risk of social isolation, low-level mental health issues and obesity.

Lambeth is one of the most diverse boroughs in England. To reduce the risk of a disproportionate impact on any one community we have developed an Equalities Impact Assessment, which is available on the council's website – [www.lambeth.gov.uk/culture2020consultation](http://www.lambeth.gov.uk/culture2020consultation), and will be developed through the public consultation period.

## A decreasing budget

By 2018 Lambeth council will have lost £90m of its budget from central government. This means less to spend right across the council, including on services for vulnerable people.

Even cutting the budget for libraries, parks, sports and arts by up to half is less than 5 per cent of what the council has to save overall. The table opposite shows what this challenging financial picture looks like in terms of money available from 2017 to 2018 for cultural services and was agreed in July 2014.

£6.573m is, of course, a lot of money – it's just over half what we had in the budget for these services in 2013-14. In the past, we managed to save money through contract renegotiations and increased efficiencies and of course we'll continue to get the best value for your money. However, the option of simply maintaining the status quo is no longer viable and may not meet your expectations.

Service Area	2014/15	2015/16	2016/17	2017/18
Libraries and Archives	£3.796m	£3.796m	£2.996m	£2.996m
Heritage (Black Cultural Archives)	£220k	£200K	£180k	-
Parks and Open Spaces	£4.459m	£3.559m	£2.259m	£2.259m
Sports and Physical Activity	£1.953m	£1.953m	£1.253m	£1.253m
The Arts	£65k	£65k	£65k	£65k
<b>Budget</b>	<b>£10.493m</b>	<b>£9.573m</b>	<b>£6.753m</b>	<b>£6.573m</b>

Cllr Jane Edbrooke joins Steadman Scott at an Afewee boxing class in Brixton Rec.



## What this means for you

To meet the needs of an increasing and diverse population, whilst balancing our financial responsibilities, we must use all the resources and assets at our disposal – buildings, space and people, including those in the public, private, non-profit and community and voluntary sectors.

It means everybody working together to secure investment in our built environment that will help stimulate new enterprise and income, which can be put back into cultural activities that improve health and wellbeing. There'll be some difficult decisions to take.

We're proposing to work with local people and partners across Lambeth to transform how cultural services are provided across these six themes:

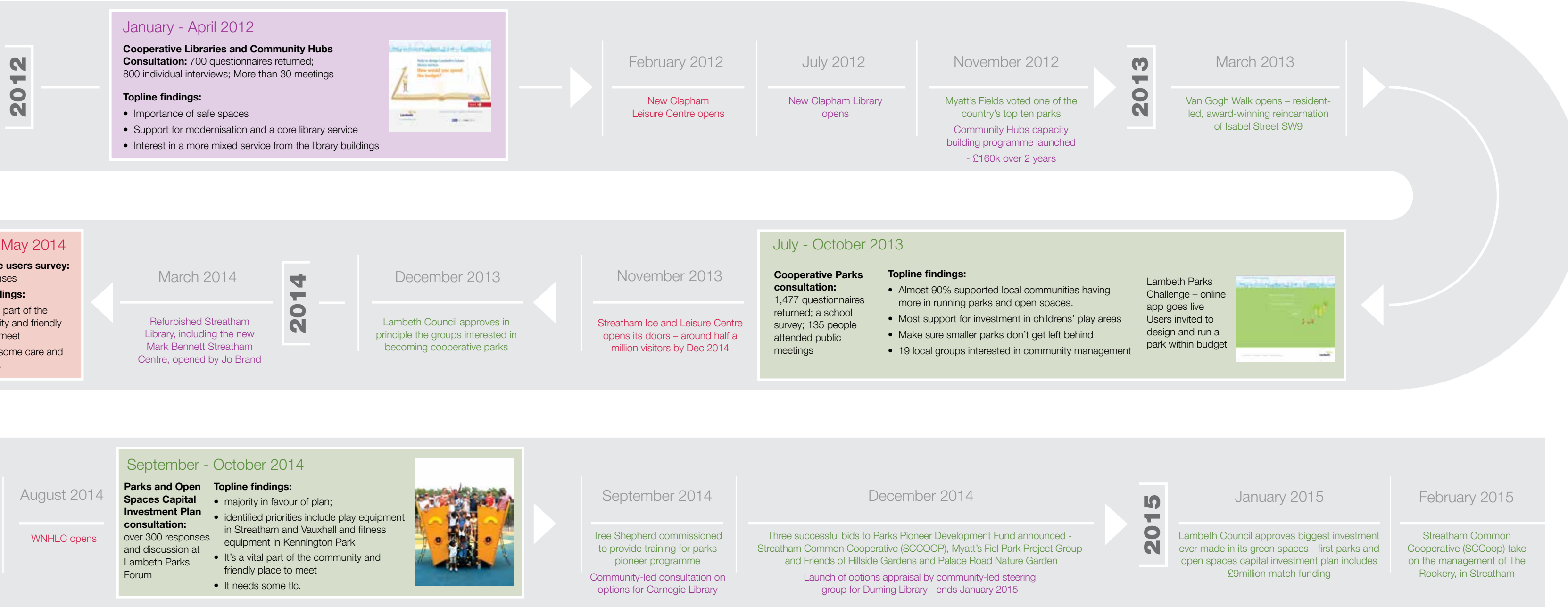
1. Let's get active	Active Lambeth - Regular physical activity and sport including the use of your local sport and leisure centres.
2. Safe & interesting spaces	Access to spaces including libraries and community buildings where you can learn, socialise and be enterprising
3. The great outdoors	Activities in your local park and the chance to have more influence how your local park is managed.
4. Be inspired	Opportunities to participate in and enjoy theatre, performing arts and music.
5. The bigger picture	Cinemas in Lambeth's five town centres and the chance to learn more about the art of cinema and film production...
6. Showing off	Opportunities to enjoy art, or if you're an artist, access to show off your work in archives, galleries and museums, whilst celebrating Lambeth's cultural history.



# How we got here

This document has been shaped by the thousands of conversations with residents, community organisations and service providers that have taken place over the past few years.

Our libraries and parks services have been leading the way in exploring new ways of working with the community – giving local people a greater role in making decisions and delivering services. Here we highlight just some of the activity and conversations we’ve had along the way.





## Let's get active

Based on population trends for the borough we expect demand for our core leisure centres, Streatham, West Norwood, Clapham, Brixton, Ferndale and Flaxman will continue to grow. Our leisure facilities also draw an audience from across South London. We are confident that by 2017, and following the renegotiation of the leisure contract, that we will not only be able to maintain the current level of service, but these facilities will provide surplus income for improved facilities and support existing activities.

### What other options did we consider?

What else did we consider?	Why was it rejected?
Maintaining the existing leisure provision until 2020	<ul style="list-style-type: none"> <li>• We need to reduce costs as we have less budget</li> <li>• We've developed new approaches to improving health and wellbeing, including working with community organisations, that can provide better value for money</li> </ul>
Withdrawing all funding from leisure services and selling off land and property used for this purpose	<ul style="list-style-type: none"> <li>• We've invested in new and improved leisure centres that are popular</li> <li>• These facilities are important to long-term health and wellbeing</li> <li>• These facilities bring in revenue and could bring in more</li> </ul>

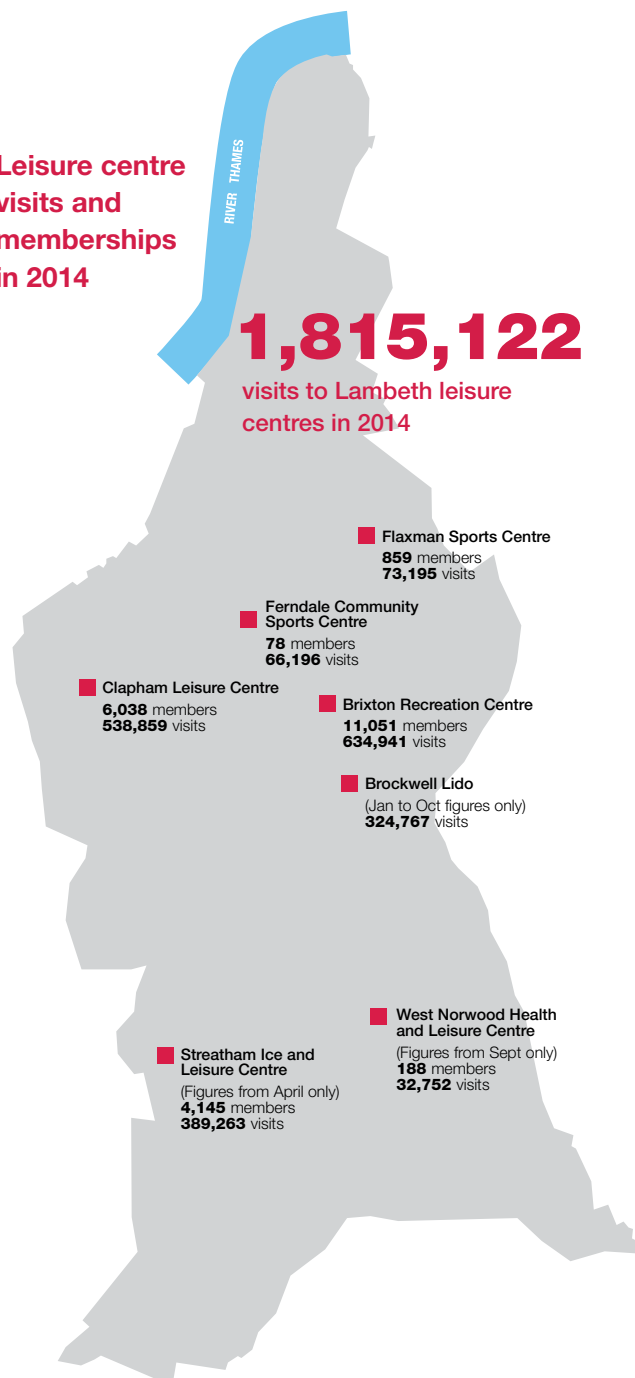
We estimate surplus income or profit to be £500,000 per annum and plan to use most of that to fund prevention activity through cultural activities and services to tackle the impact of ill-health.

As part of this work, we'd like your views on Lambeth's first Physical Activity and Sports Strategy entitled *Active Lambeth*, which includes plans for new investment in sports buildings and facilities (at [www.lambeth.gov.uk/culture2020consultation](http://www.lambeth.gov.uk/culture2020consultation) and in all of Lambeth's libraries).



The new Clapham Leisure Centre, including a four-court sports hall, opened February 2012

Leisure centre  
visits and  
memberships  
in 2014



Playing football in Kennington Park



Tennis coaching at Clapham Common





A water fitness class with Streatham Ice and Leisure Centre's Senior Club.

We propose to renegotiate the current leisure contract in 2017 to provide better value for money. This means keeping the current range of indoor facilities but reviewing the services we offer and future demand.

We are proposing that:

- By 2018 plans and funding have been secured for the refurbishment of the Brixton Recreation Centre. We aim to have this newly refurbished facility operational by 2022.
- A 55+ Healthy Lifestyles programme will be offered at Brixton, Streatham and Ferndale Leisure Centres targeting men at risk of long-term health conditions.
- Ferndale Community Sports Centre will be the hub providing a home to grass-roots sports clubs as the first step in their growth and capacity building.
- Gym equipment will be made available for use by anyone in larger parks and open spaces.
- Community-led organisations such as Block Workout will run a range of outdoor fitness classes across the borough.



Block Workout is about using everyday surroundings for a healthy lifestyle. They opened the Brixton Street gym in April 2014 on council land at Somerleyton Road.

## A Sport Innovation Fund

Working alongside our contracted leisure, sports and physical activity providers we propose to establish a Sport Innovation Fund. This will provide access to facilities at reduced rates for Lambeth based community-led sport clubs and self-help groups.

We propose the priorities for this fund to be:

- A Lambeth Active Women's and Girls programme encouraging and offering a range of activities.
- Community sports clubs supported to achieve Sport England Club Mark and FA Charter Standard accreditations, so they can get increased levels of external funding for activities across Lambeth.
- An Active Walks programme led by trained walk leaders in our parks and open spaces to encourage residents of all ages to take up walking - a free, sociable and effective way to exercise.

The St. Matthew's Project offers free football and coaching sessions in a safe, friendly environment to young people aged from 6 to 21. But it is much more than just a football club, supporting young people beyond the football pitch.



Boxing training at Platanos College, Stockwell, helps young women to improve their fitness and boost confidence.



## Safe and inspiring spaces

Safe spaces that provide everyone with the opportunity to enjoy, learn and socialise remain a priority. These places need to be homes for community groups to grow and where volunteering and enterprise can flourish. Access to digital facilities and the principle of free study space is an integral part of this approach.

The Lambeth Libraries Commission in 2011 set out the challenge to develop a simple, low-cost model that takes library services into new places in the borough, giving access to free books in places like GP clinics, leisure centres, local schools and businesses.

The Commission's report (available at [www.lambeth.gov.uk/culture2020consultation](http://www.lambeth.gov.uk/culture2020consultation) and in all of Lambeth's libraries) demonstrates that, whilst Lambeth residents enjoy and use their library services, they also support increased innovation in the way the service is provided.

Because of the cuts to our funding and the savings we have to make, the traditional library service across ten libraries is no longer financially viable. Through the cooperative libraries programme we've come up with proposals for a comprehensive and efficient library service for Lambeth, which will mean some changes and some exciting new ideas by 2018.

For Lambeth libraries we propose a mixed market of not-for-profit enterprises designed to meet residents' needs, offering new technologies and free at the point of access. This will include the creation of innovative funding streams that support literacy and the love of reading for future generations.



The new Clapham Library opened in July 2012

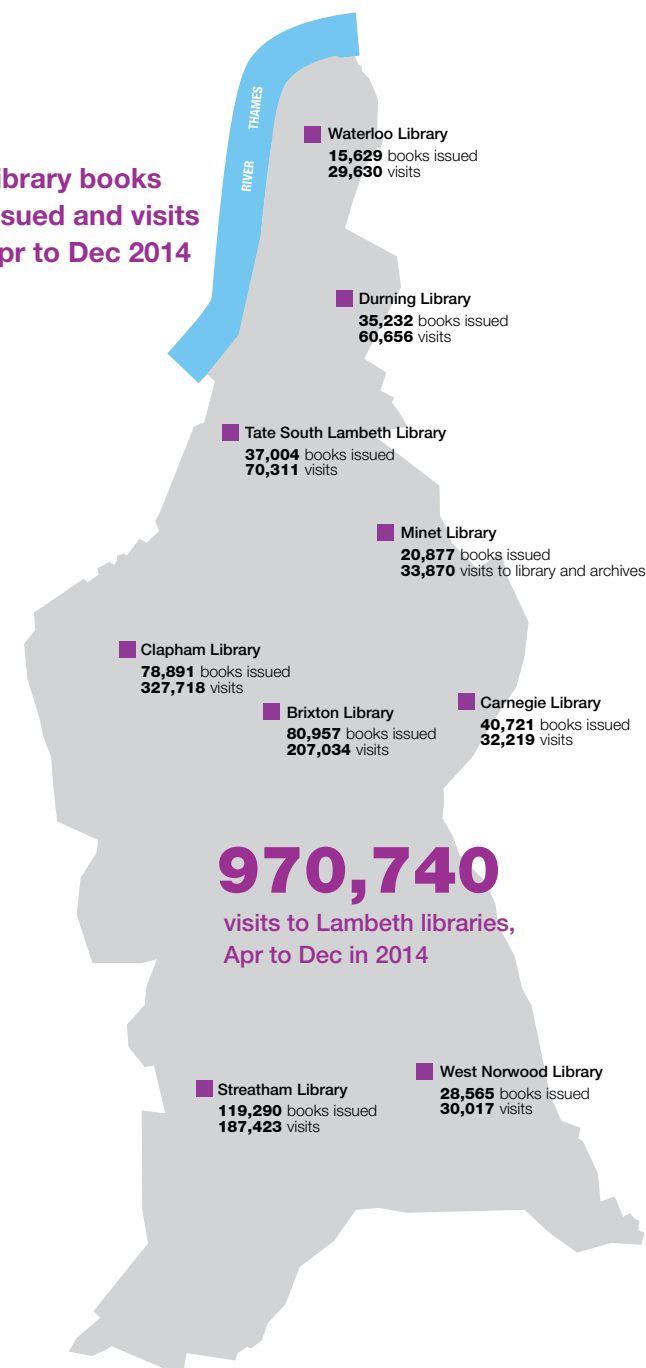
### What other options did we consider?

What else did we consider?	Why was it rejected?
Continuing to spend the same amount of money on the library service	<ul style="list-style-type: none"> <li>We need to reduce costs as we have less budget</li> </ul>
Focusing the library service at Streatham, Clapham and Brixton libraries	<ul style="list-style-type: none"> <li>We don't feel this would meet the council's statutory obligations for providing a library service</li> <li>Working with local people, we're developing new approaches for supporting literacy and a love of reading that mean we can be more ambitious</li> </ul>
Spreading the available budget across the existing 10 libraries	<ul style="list-style-type: none"> <li>We don't feel this would provide a comprehensive library service across the borough</li> </ul>

Jo Brand cuts the ribbon to open the refurbished Streatham Tate Library in March 2014. The £1.4 million project includes a new community hall to the rear of the library which can be hired for exhibitions, meetings, plays, clubs and classes and upstairs offices are now available for local businesses.



### Library books issued and visits Apr to Dec 2014





## The town centre library service

We propose that town centre libraries will provide strong operational links with a network of community-led library services making sure the best service is available across Lambeth regardless of the provider.

Our town centre libraries in Clapham, Brixton, Streatham and West Norwood will continue to represent the borough's statutory comprehensive and efficient library service. In addition:

- Using the space in the libraries outside working hours or the spare office spaces will bring in rental income that will provide an increased source of revenue for library services.
- There will also be increased opportunities for residents to volunteer and work alongside professional staff in town centre libraries to protect opening hours and extend them where we can.

With a projected footfall of 1 million visits per year by 2022, we are proposing that a forward looking integrated digital community space will be designed into the refurbishment of the Brixton Recreation Centre. This would provide much needed additional study space with access to Wi-Fi, docking spaces and PCs – supported by our successful digi-buddies scheme.

A full review of town centre library provision will look at the projected population growth particularly in North Lambeth and will be completed by 2020. Meanwhile, we propose Tate South Lambeth Library will act as the town library service for the north of the borough.

We will continue to develop our hub and spoke model with town centre libraries supporting small unstaffed lending libraries in community places – such as our popular bookshelves in the Railway Pub in Streatham Vale. We are proposing to expand these types of service models, initially in Vassall and Tulse Hill wards and then to other areas of the borough, according to demand.

If this approach is agreed it may require the revision of opening hours across the five town centre libraries – however, we plan to encourage more volunteers to work alongside our professional staff in these libraries. This could mean extending opening hours while making savings, using a strong volunteer network and strengthening the role of librarians. If changes are required in opening hours you'll be fully informed and will have the chance to comment.



The refurbished Streatham Tate Library

## A Lambeth Community Library Fund

By 2016 and in partnership with the London Community Foundation we are proposing to create a £10m endowment that will establish the Lambeth Community Library Fund, which will provide between £350,000 - £450,000 revenue per year in perpetuity. This fund will support charities, social enterprises and community groups in Lambeth with the opportunity to provide and support literacy development and the love of reading, including the early years reading programme.

We propose to establish a Lambeth Community Library Trust with the London Community Foundation to administer the Fund with the council having a clear custodial role in the granting of the fund.



**Streatham Vale residents take the lead setting up a community library in The Tearooms at the back of the Railway Public House.**

## Waterloo Library and Minet Library

We are proposing to decommission Waterloo Library and Minet Library services during 2015 and sell them by 2016 on the open market. This means the revenue budgets for library services currently provided by the council at Waterloo Library and Minet Library sites will stop but the money raised from the sale of these sites will help facilitate investment into the endowment for the Lambeth Community Library Fund.

By utilising money from private sector developers, we are proposing to establish a one off Lambeth Library Challenge Fund during 2016 and 2017 specifically for Bishops and Vassall Wards. This fund will be open for charitable trusts and social enterprises to bid for funding to establish a community library offer, for example the fund could purchase equipment that will support self-service technologies, capital costs of creating a fit-for- purpose space, volunteer programmes and peer-to-peer support networks.

We are also proposing that these charitable trusts and social enterprises will also be able to apply for revenue funding from the Lambeth Community Library Fund or ask for support from a town centre library.

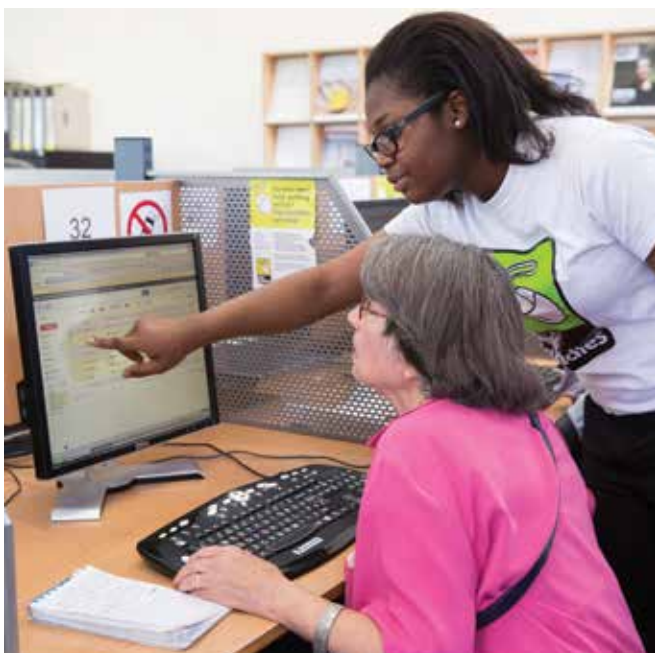


## Carnegie Library, Durning Library and Upper Norwood Joint Library

It is proposed that access to the Lambeth Community Library Fund will replace the council's revenue budgets for library service provision in Carnegie Library, Durning Library and Upper Norwood Library by 2016. These facilities will not be part of the council's direct statutory requirement to provide a full and efficient library service in the borough by 2016.

Following on from our existing community library strategy, we will continue to support independent charitable trusts, community trusts and enterprises to come forward. We will support proposals to access the Lambeth Community Library Fund and use rental income and to make these buildings more financially secure by 2016.

This approach may also include the buildings being transferred to independent charitable trusts, community trusts and enterprises under the council's asset transfer policy. This proposed model offers the opportunity to secure these facilities for the long-term future, but if no independent charitable trust, community trust or enterprise comes forward by 2016 we will consult local communities on the options before making a final decision on the next steps which could include closure of some buildings.



Digi-buddies are volunteers who help people who don't know how to get online. They come to a number of venues, including libraries.



Creative session at Clapham Library

## Community buildings

We want to encourage a thriving network of community buildings. We have supported nine groups to develop the Lambeth Community Hubs Network with help from our partners at Community Matters and Lambeth Voluntary Action Council, and would like to expand this membership.

Community buildings and Hubs will be managed and, in some cases, owned by independent charitable trusts and social enterprises once asset transfer proposals have been developed and approved (further information can be found within the Community Hubs cabinet at [www.lambeth.gov.uk/culture2020consultation](http://www.lambeth.gov.uk/culture2020consultation) and in all of Lambeth's libraries).

Alongside the proposals at Carnegie Library, Durning Library and Upper Norwood Joint Library we propose supporting the following safe space developments:

- The Brix at St. Matthews Church and the Brixton Domino Social Club for community and social enterprises.
- The Angell Town Estate will be the centre for a thriving neighbourhood of enterprise and community activities, supported by shops, small business units, sports and new community building specifically designed to support young people who are vulnerable to gangs.
- On South Lambeth Road, Stockwell Partnership will open up their new purpose built, self-funded community facility.
- The Longfield Hall Trust will run a successful community and cultural centre, combining Early Years Services with theatre/rehearsal space, linking with the Myatt's Field Park Project and the Remakery offering a range of indoor and outdoor activities.
- Slade Gardens Adventure Playground will operate in a new building funded by a local developer and will be financially sustainable, providing accessible youth and play provision for the local area.

- High Trees Community Development Trust will continue to provide adult education and youth provision for local people. Managing a successful adventure playground as well as their current building, this will be operating on a self-financing basis via external contracts.
- Waterloo Action Centre to grow as a self-funded community facility through the asset transfer programme.

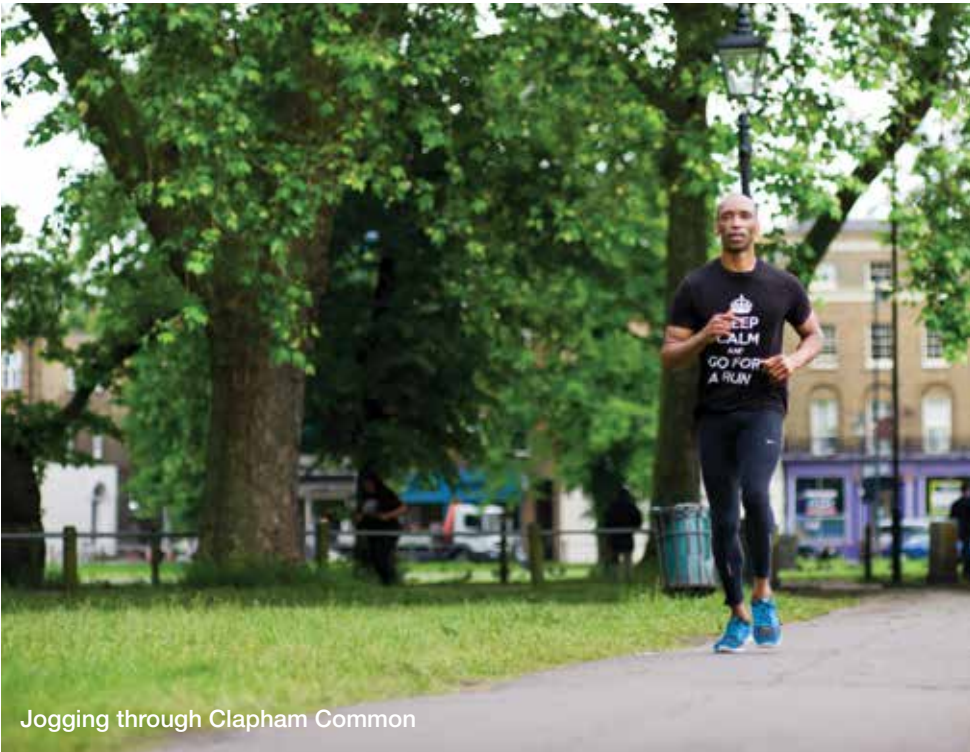


Space for study at West Norwood Library

# The great outdoors

With a growing population coupled with the increased density of modern living, access to local parks is an increasingly important asset for quality of life, wellbeing, health and economic prosperity. These spaces provide somewhere to enjoy physical activity, sports and cultural events as well as an escape from the stresses and strains of inner London living.

Lambeth parks are amongst the best in the country with 11 green flags. Our local parks boast some amazing examples of gardens and green space – from the Streatham Rookery to the Flower Garden in Kennington Park. They are also home to community food growing projects, restaurants, cafes and children’s clubs and playgrounds.



Jogging through Clapham Common

## What other options did we consider?

What else did we consider?	Why was it rejected?
Continuing to spend the same amount of money on parks and open spaces	<ul style="list-style-type: none"><li>• We need to reduce costs as we have less budget</li></ul>
Reducing the number of parks, common land and open spaces available to the public	<ul style="list-style-type: none"><li>• We think free access to open spaces is invaluable to residents’ health and wellbeing</li><li>• We think parks and open spaces are an important asset for Lambeth’s economy</li><li>• Working with community organisations, we’re developing new approaches for maintaining and investing in our parks</li></ul>

Lambeth has a strong network of Friends of Parks groups who have levered in additional funds to our parks over the last five years. Parks also host a range of sports sites that provide an important source of income. We believe Lambeth is in a strong place to protect our parks, despite having to cut our annual spending by 50%.

In the last few years we have worked with community groups and organisations to test new models of local management and have now launched our first ever community managed green space - The Rookery in Streatham Common.



## Lambeth Parks visits to playing pitches in 2014



Calling Festival came to Clapham Common for the first time in 2014. 50,000 people danced in front of performers such as Stevie Wonder and Aerosmith and it generated £142,350 income for Lambeth Council. It will be returning in 2015.

## A new events strategy

The borough has played host to a range of nationally renowned events – such as SW4 and last year's National Theatre on Tour programme. As well as being on the doorstep for residents to enjoy, these events can shine a spotlight on the borough and give a boost to local business.

We've successfully developed new income sources through hosting amazing events and concerts in Lambeth's parks and open spaces. Our new draft *Events Strategy* (available at [www.lambeth.gov.uk/culture2020consultation](http://www.lambeth.gov.uk/culture2020consultation) and at all libraries) proposes to keep our successful flagship council event – the Lambeth Country Show – and continue to maximise income within the following framework:

- 40 major commercial event days in each year across all parks, common land and open spaces.
- 2/3rds of all income from events will be put back into parks to improve facilities and infrastructure.
- Part of this re-investment will be used for a small 'rolling fund' to support community-led and family based events in the borough's parks and open spaces.
- Review of the governance, policy and protocols for outdoor events, including bringing acceptable noise levels in line with other boroughs.

## A capital investment plan

We have already agreed to start a programme of capital improvements to facilities and are encouraging businesses in our green spaces, including cafes and personal training. These activities will generate vital income towards maintaining our green spaces.

Capital investment will be prioritised to parks that offer the opportunity to generate additional income. This should allow remaining budgets to be used where possible to protect smaller parks, which have little scope to generate new streams of income. You can read more about the capital investment plans for local parks and open spaces online at [www.lambeth.gov.uk/culture2020consultation](http://www.lambeth.gov.uk/culture2020consultation) and in all Lambeth libraries.



The Annual Lambeth Country Show is hugely popular. Last year's 40th anniversary show attracted around 125,000 visitors to Brockwell Park



## Locally managed parks

During 2015 we propose to support a further ten pioneer parks, who are aiming for local management of their park. We can also see that our parks present exciting opportunities to generate income and will help our pioneer parks become financially resilient through the use of a greater share of the income made in the parks.

We also propose to support clustering arrangements between parks to share resources and provide greater financial security. We think taking this approach will also help protect our highly valued smaller spaces, which have less potential to generate income.

Locally managed parks make sense - not just financially but because we have seen first-hand the additional resources the community can bring in. We will work with community-led trusts, social enterprises and local charities to make this happen but realise this model isn't for every park.

By the end of 2015 we are proposing to launch an alternative partnership parks model which still allows local people to have a strong role. This will build upon the foundation of having active community support and engagement, with local ward members at its heart. Our proposal is to establish representative partnership boards that are responsible for setting the priorities of the park and can use a proportion of the income made in their park.

There will be less council money to maintain our parks, but we will consult with you on local priorities and build upon the foundation of local contract management through our Friends groups, our excellent parks and open spaces forum and local ward councillors.

By working to ensure all our green spaces have a strong Friends group or are covered by the parks and open spaces forum and giving ward councillors a strong role in monitoring contractors, we will ensure that each park has an effective service.

We will make it easier for residents to lend a hand - from supporting gardening groups to providing small local pots of money for maintenance to get small repairs done quickly. A copy of the implementation plan for the cooperative parks programme is available at [www.lambeth.gov.uk/culture2020consultation](http://www.lambeth.gov.uk/culture2020consultation) and in all Lambeth libraries.



**The Streatham Common Cooperative (SCCoop) are Lambeth's first parks pioneer under the cooperative parks programme and will be managing The Rookery in Streatham in association with the council. They are a not-for-profit community enterprise that will be directly accountable to local residents.**

## The arts

### Be inspired

The flagship cultural quarter on Lambeth's Southbank is integral to securing our continuing cultural prosperity. Facilities like the Southbank Centre, Old Vic, National Theatre, Young Vic and Rambert Dance Company not only provide a national and international stage for the borough, they also generate substantial benefits to the local economy and environment.

We want to support and encourage theatre, the performing arts and music that offers not just entertainment and inspiration but helps local businesses and provides jobs. We want to secure Lambeth as a major cultural player - recognised for developing performing arts and creative enterprise.



Ovalhouse has thrived as a radical theatre and pioneering youth arts organisation for 50 years. Based in Oval, it is working with the council on a move to Brixton as part of the Somerleyton Road project.

### The bigger picture

Lambeth already boasts the British Film Institute Southbank, The Imax at Waterloo, Clapham Picture House, The Brixton Ritzy, The Streatham Odeon and the Whirled Cinema at Loughborough Junction and this provides an excellent base on which to build our ambition.

We are working with Picturehouse Cinemas Ltd to turn the old Nettlefold Hall, that was part of the West Norwood Library on Norwood High Street, into a four-screen cinema, with bar and café. As part of the deal, West Norwood Library will also be improved with a £1.125m investment from the council. (More information is available at [www.lambeth.gov.uk/culture2020consultation](http://www.lambeth.gov.uk/culture2020consultation).)

We want Lambeth to be increasingly recognised as being film friendly with national, international and local films, TV programmes and commercials regularly shot across the borough.

Working with private sector and social enterprise partners our proposal is to stimulate the growth of cinema and film as an important cultural and economic force in the borough. This includes local residents and schools being more engaged in filming, along with the employment and training opportunities film production, location and programming provide.

Some of the exhibits on show at the Cinema Museum in Kennington, which is based in the old workhouse that was home to Charlie Chaplin. The museum has plans to expand and a large volunteer programme.





## Showing off

Lambeth has always been a force on the visual arts scene, with a rich history of galleries and studios that attract diverse audiences and support new and emerging artists. Artists and audiences require innovative spaces to work, create, perform and visit which is why designing the needs of the creative sector into our plans now will pay dividends by 2018 with the growth of Lambeth talent, more established artists and creative businesses coming to Lambeth.

We want to encourage more opportunities for artists to exhibit and sell their works through independent local festivals, markets, events and open studios held throughout the year.

We will continue to work with and support Black Cultural Archives with their plans to secure increased commercial sponsorship, traded income and partnerships with local businesses for their long-term sustainability.



**198 Contemporary Arts and Learning houses gallery spaces exhibiting the work of emerging artists and a media studio developing the creative skills of local young people. Getting the building through the council's asset transfer programme will allow them to expand and create a sustainable arts organisation for Herne Hill.**

## Celebrating our past

Lambeth has a rich cultural heritage, that includes Lambeth Royal Doulton pottery factories in Vauxhall, artist and poet William Blake lived in Lambeth, Charlie Chaplin spent his formative years in the borough and Vincent Van Gogh spent time here.

Brixton Academy continues to be one of the best musical venues in the country and Lambeth has an incredible, diverse musical history. The Windrush generation that first started to arrive in Lambeth in 1948 infused the borough with the music of the Caribbean that continues to influence the music of today.

We will continue to work closely with the Black Cultural Archives and, following a feasibility study, may propose moving the borough archives from Minet Library to Brixton Library. Brixton would be the destination for anyone interested in archives or information on heritage in the borough.

We will work with the cemeteries' management team and Friends of group and local volunteers at West Norwood Cemetery to develop an application to the Heritage Lottery Fund for the refurbishment of this fantastic national asset.

We estimate securing over £1m investment from Lambeth Council in the borough's heritage resources by 2018/19. This does not include additional funding our partners may be able to secure through lottery grants.



**Formed in 1981, the Black Cultural Archives moved to its new home on Windrush Square in July 2014. This is the UK's first black heritage centre.**

## Invest to create

In 2008 the Greater London Authority estimated there were 2,165 creative firms in Lambeth employing over 12,000 people, contributing an estimated £22bn to the local economy. This does not take into account the thriving network of community-led clubs, community and other groups in the borough supporting physical activity, sport and cultural activities.

By 2018 Lambeth Council will be investing £6.6m in this sector.

Creative Communities: Vibrant Neighbourhoods is a framework for our aim to work with partners to make the most of the many and varied resources in Lambeth. Although most of these resources are nothing to do with the council, we believe we can help in a range of practical ways one of which is to set up a 'creative network' to share ideas, resources and inspiration. The network will coordinate effort, resources and investment including:

- Supporting external grant applications
- Identifying and using opportunities through the Community Infrastructure Levy
- Building endowments to provide sources of future revenue for Lambeth's creative sector
- Mobilising volunteer effort
- Planning capital investment
- Using Lambeth's built environment more creatively



Expect the unexpected at the Lambeth Country Show



Training a new generation of performers at the Lambeth Country Show

## How to get involved in this debate

There are several ways you can make your voice heard during the consultation period between **Friday 30 January 2015** and midnight on **Friday 24 April 2015**. All documentation, the questionnaire, up to date event details and useful contacts are available online at [www.lambeth.gov.uk/culture2020consultation](http://www.lambeth.gov.uk/culture2020consultation).

- Please complete the questionnaire inside or online by midnight on Friday 24 April 2015. Paper copies should be returned to a library or the freepost address provided
- Speak to your elected ward councillor about these proposals
- Email your thoughts to **[culture2020@lambeth.gov.uk](mailto:culture2020@lambeth.gov.uk)**

A range of events, including public workshops, will be held across the borough throughout the consultation period. Up to date details will be made available on the consultation web page.

Follow us and comment using social media –  
Twitter **@lambeth\_council #culture2020**

Read more about the range of things to do in Lambeth and the local people involved in making them happen at [www.love.lambeth.gov.uk](http://www.love.lambeth.gov.uk) - you can also sign up for our newsletter so we can keep you up to date.

If you have any queries about the consultation or difficulty accessing any information please contact **[culture2020@lambeth.gov.uk](mailto:culture2020@lambeth.gov.uk)**

As with any transformation programme there are risks involved in this approach so we've compiled a risk register that will be updated at the end of this public consultation, and following final decisions taken by the council. The risk register is online at [www.lambeth.gov.uk/culture2020consultation](http://www.lambeth.gov.uk/culture2020consultation) and in hard copy at all Lambeth libraries.



### Picture credits:

Mark Bellot – p3, p14, p18r; Fiona Freund – p12r; Jim Forrest - p13r, p23; Ren Forrest – p26; David Tett – cover, p5, p6, p10, p11, p15, p16, p19, p20.

With thanks also to BCA, the Cinema Museum, St Matthew's Project, Live Nation and 198 Gallery.



## **Our ambition is that by 2020:**

- No matter where you live in Lambeth you should be within 20 minutes average walking time from affordable activities, which will improve your health and wellbeing.
- 85% of Lambeth's population are engaged in cultural, sports and physical activities as a routine part of their lives.
- All residents have access to a range of affordable, excellent facilities for cultural, sports and physical activities.

**If you would like this information in large print,  
in Braille, on audio tape or in another language,  
please phone 020 7926 2623**

### **Campaigns and Communications**

Lambeth Council  
Room 113, Lambeth Town Hall  
Brixton Hill  
London  
SW2 1RW

**Tel:** 020 7926 2623

**Email:** [culture2020@lambeth.gov.uk](mailto:culture2020@lambeth.gov.uk)

[www.lambeth.gov.uk/culture2020consultation](http://www.lambeth.gov.uk/culture2020consultation)