

# Healthy Living Centre

It is proposed that the currently unused basement at Carnegie, will house a new gym, run by the council's leisure provider Greenwich Leisure Limited (GLL). The agreement with GLL managing the costs of Carnegie and bringing in revenue, allows us to open the building for the community at the earliest opportunity while still making the savings required.

## Who are GLL?

*GLL are a not-for-profit leisure provider of 23 years' experience. We successfully operate facilities for the community across the country. As a social enterprise, we strongly support community provision.*

*We are pleased to work with Lambeth Council to provide public gym facilities under the same roof as their neighbourhood library and flexible community space in Carnegie. The cost of using the healthy living centre will be in line with the other public leisure facilities we run in Lambeth, such as Brixton Rec.*

# GLL



## What the gym area could look like

There will be between 60-70 gym stations which will be a combination of cardiovascular and resistance machines, as well as male and female changing rooms and toilets.

Classes will be offered in the community space throughout the week and will be a selection of low impact classes such as Yoga and higher energized classes such as body pump.

It is proposed that the entrance to the gym will be located at the side of the building, keeping the main entrance exclusively for the users of the library and community space.

## TIMELINE FOR WORKS





# The future of Lambeth's libraries

Lambeth has committed to delivering 10 libraries in the borough. This includes town centre libraries in Brixton, Clapham, Streatham and West Norwood; Durning and Tate South Lambeth as a joint town centre service and four smaller neighbourhood libraries.

Due to severe cuts to funding from central government over a number of years, the council has had to look at every single service it provides and work out how to best deliver for residents within the parameters of its budget, and this includes the library service. After consultation with residents, some changes to Lambeth's libraries are being made but a library service is planned for all ten locations. For more information see [www.lambeth.gov.uk/lambeth-libraries-faq](http://www.lambeth.gov.uk/lambeth-libraries-faq)



**Brixton** – fully maintained service with existing opening hours.

**Streatham** – newly expanded and refurbished in 2014, will maintain full service with existing opening hours.

**West Norwood** – current building will maintain full service with existing opening hours. Plans have been agreed for a brand new library, with a full and comprehensive service, to open in 2017.

**Clapham** – brand new library opened in 2012, will maintain full service with existing opening hours.

**Tate South Lambeth** – fully maintained service, currently with existing opening hours.

**Durning** – fully maintained service, currently with existing opening hours. *\*Both Durning and Tate South Lambeth are to remain open while plans for a new North Lambeth town centre library are developed.*

**Upper Norwood** – funded by Lambeth and Croydon councils, will be run by Upper Norwood Library Trust from the beginning of July, with a library service including 35 hours a week of library staff.

**Waterloo** – moving from current building to the Oasis Centre in Westminster Bridge Road, with longer opening hours and a full stock of books.

**Carnegie** – temporarily closed from April 2016, the current level of community space will remain, including a neighbourhood library service with librarians on site regularly to lead activities and to ensure that stock is up to date. The council has also partnered with Greenwich Leisure Limited, a social enterprise, who will provide health and fitness facilities in the basement of the building.

**Minet** – Lambeth has commissioned a study to decide the future location of Lambeth Archives, currently located in Minet. That study will report back in September 2016. The future range of activities that will be delivered in the Minet building will be decided once the Archives study is complete, so the best use of the whole building can be considered in light of the findings. It is still proposed that a Neighbourhood Library will re-open in the building in 2017.





# Community Space

The whole of the ground floor and first floor of the building will be dedicated to flexible community space, including the Neighbourhood Library. This flexible space can be used to increase what is on offer to local residents and generate money to help keep the building running long into the future.

## Community ownership

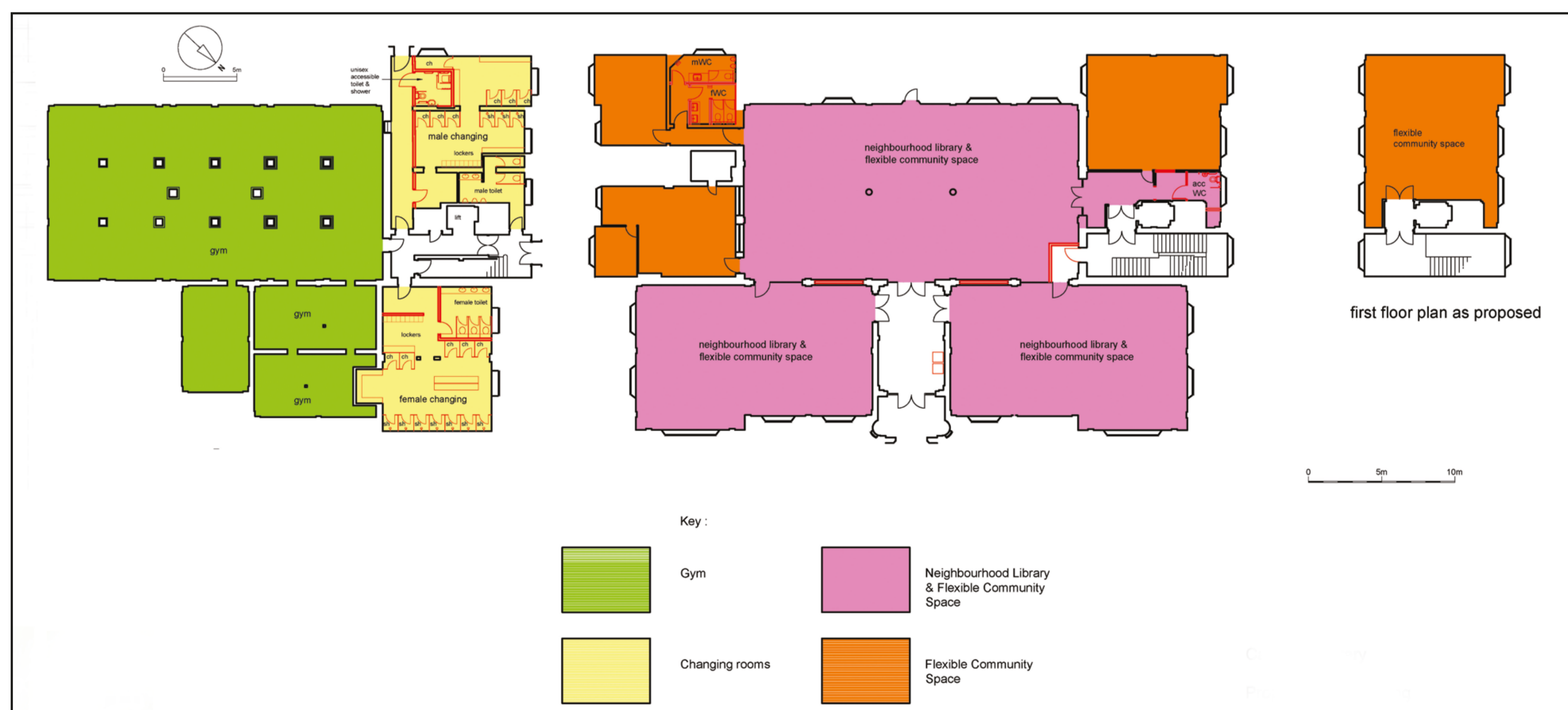
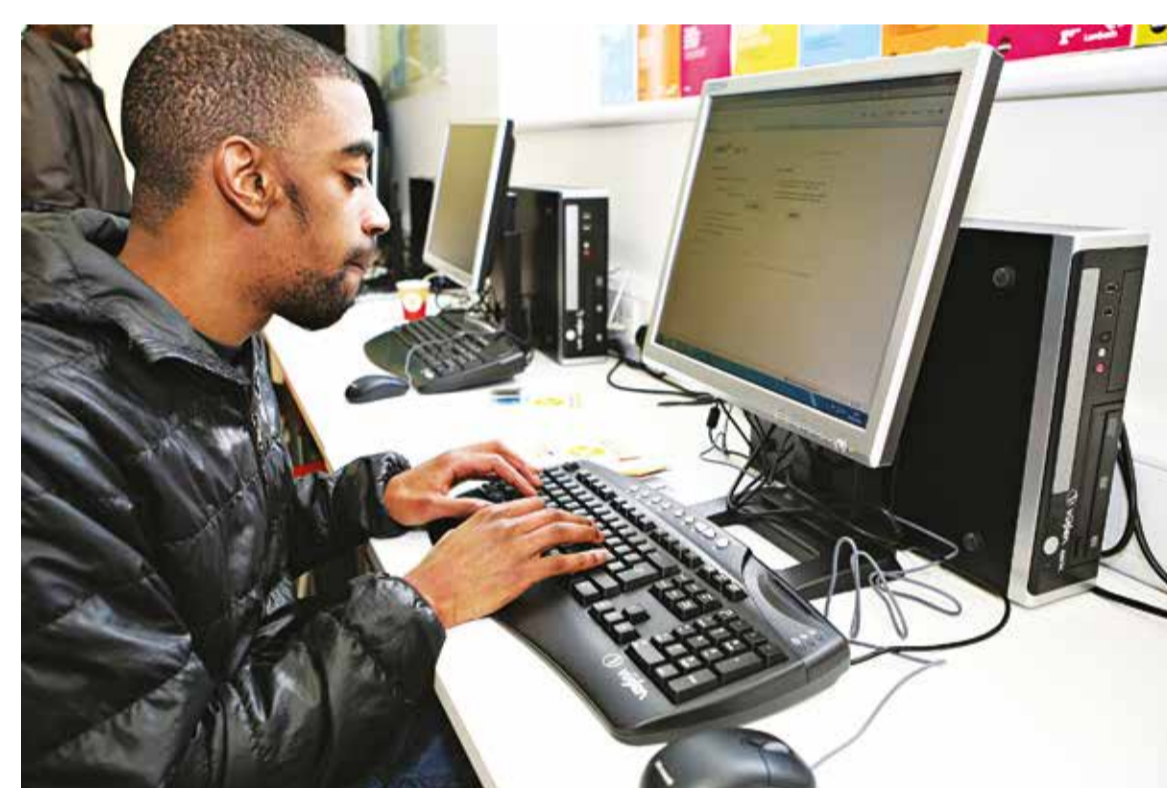
It is proposed that the Carnegie building is handed over to a community group to run, under what is known as an 'Asset Transfer'. This would enable the community group to access new funding such as grants and Lottery funding to provide community activities in the building, and save the council money.

There have so far been two expressions of interest in taking over the building and plans are being put in place to ensure that the future of Carnegie as a Community Hub, open for the benefit of all local residents, is secure and sustainable.

As well as the Neighbourhood Library, the Community Hub could include:

- Workspace for small businesses
- Performance space for local music and arts groups
- Community meeting rooms
- Training opportunities and courses
- A café.

**Tell us what you think...**





# Carnegie Neighbourhood Library

The reopened Carnegie building will be home to a Neighbourhood Library, provided by Lambeth Library service. It is proposed that this will include:

- A comprehensive book stock, at the same level as the previous Carnegie Library, planned and managed by Lambeth Library service, reflecting local needs, culture and community languages
- DVDs, e-books, audio books and books in large print
- Free WiFi access and computers (with software and keyboards adapted for users with visual impairment available)
- Quiet study space
- Self-service book lending
- A programme of activities that will be provided by Lambeth libraries as well as community groups
- A weekly session for under-5s and a monthly reading group
- Longer opening hours than the previous Carnegie Library expected to be up to 70 hours per week
- Staff on site at all times including Lambeth librarians present every day for up to two hours
- A community reading garden.

Access to the library service is free to all who work, live or study in Lambeth. Children will be able to use the library in the same way as the other libraries in the borough. Free membership will also be available to residents in other boroughs who wish to use the library regularly.

Carnegie library members will also have access to the whole Lambeth Library catalogue and be able to order books from other Lambeth Libraries. Housebound residents in the Herne Hill area will be eligible for visits by the home library service team.

The community groups which previously used the library building will be welcome back.



PHOTOS: INTHERIGHTLIGHT