

Lambethtalk

PEOPLE • PLACES • EVENTS • DATES • CONTACTS • FEATURES

AUTUMN 2020

FREE TO YOUR DOOR



TEAM LAMBETH UNITED FOR THE DAY AFTER page 4



A cooperative council

Please recycle this magazine


Lambeth

WALCOT FOUNDATION

Independent. Inspired. In Lambeth, since 1667

The Covid-19 pandemic has affected us all, but it has affected low income households the most

Thank you to all those who donated to our Covid-19 Lambeth Community Response Fund. Along with our own resources and those of others funders, we had distributed **£545,566** by the end of July to meet C-19 related need in Lambeth.

We're now looking at the likely longer term impact of the pandemic, and how our historic concern with poverty in Lambeth can best help those who have lost their livelihoods and their confidence.



In the year to 31 March 2020 we made grants of **£2.06 million**. We considered **430 applications**, made **300 new awards** and paid **73** instalments of existing multi-year grants. **245** individuals received grants paid to them directly, we supported **131**

students in Higher Education and **46** in Further Education. **42 Lambeth schools** – almost half the borough's total - received **54** grants between them and we made **64** grants to Lambeth community groups and charities.

We also launched our **Student Advance Programme** and the **Walcot Futures** programme - all part of our work to strengthen the whole-life prospects of Lambeth people affected by financial and social disadvantage.

If you are able to give, we'll put your money to good use

4 in 10 children in Lambeth are growing up in poverty. Their situation is now made worse by the Covid-19 pandemic. Education has been disrupted, households are under financial stress, and support from voluntary groups is threatened by loss of funding. Walcot makes **no deduction** to meet our running costs: 100% of what you give reaches people who need it most (more if you Gift Aid it).

Give online at walcotfoundation.org.uk/donate or email grants@walcotfoundation.org.uk

We are Lambeth's principal independent grant-making charity. We work to improve the whole-life prospects of those affected by modern day poverty and disadvantage. Over the ten years to March 2020 we made 3,372 grants totalling £19,655,000. Find out more at walcotfoundation.org.uk

Welcome

Dear resident

The Covid-19 virus has changed everything. Our borough has faced some extraordinary and far-reaching challenges. Lambeth residents have experienced great pain and hardship, isolation and declining health. Many people have lost their jobs. Large numbers of people have suffered ill health as a result of the virus and sadly many have died from it.

While many of us are rightly welcoming the opportunities to see family and friends again, there is still huge caution about carrying on as before. And we know that we are

only through the first phase of the crisis – the challenges ahead are even greater.

In this edition, we set out the work Lambeth Council is doing to build a recovery that works for everyone – helping businesses, community groups and public services to reopen safely and to support residents.

We're proud of the way that Lambeth has come together to fight the virus – neighbours supporting each other and communities banding together. In particular, we've seen the incredible efforts made by local voluntary groups and



mutual aid groups to help support each other.

We now need to harness that effort and solidarity and work together to build Lambeth's recovery.

Best wishes

Cllr Jack Hopkins
Leader of Lambeth Council

For the latest information go to
lambeth.gov.uk/coronavirus

For translation of articles in any other language, large print format, or to opt-out from receiving the magazine contact:
lambethtalk@lambeth.gov.uk

Shopping service for vulnerable residents



Are you vulnerable or self-isolating? Let us do the shopping for you.

Call the MYcommunity Gateway service on 0333 360 3700 or email mycommunity@ageuklambeth.org Open Monday-Friday, 9am-5pm

- Give us your shopping list
- A DBS (Disclosure and Barring Service)-checked volunteer will deliver safely the groceries to your home
- Pay via our secure payment over the phone.

Stay safe, stay independent.

A partnership between Lambeth Council, AgeUK Lambeth and social enterprise onHand.



NEWS

Team Lambeth

Created from scratch to assist with Covid-19 community projects, Team Lambeth has become a very active volunteering group, with over 1,500 local volunteers signed up and over 1,200 volunteering opportunities.

Volunteers have helped with a variety of roles, from befriending isolated residents or helping voluntary organisations with their social media to delivering food and helping food banks prepare packages.

There is a range of very flexible opportunities to suit your schedule. Volunteering is a wonderful way of finding out more about other Lambeth residents and the groups who support them. You can share your skills, empower others, develop yourself and be part of the Team Lambeth 'family'. To sign up, just go on lambeth.gov.uk/volunteer

Open when it's safe

Our Civic Centre closed due to Covid-19 and we saw this as an opportunity to make some improvements and changes. We want to ensure we provide services for our most vulnerable residents and will work with the community to make that happen.



We're expecting to reopen in November, and want to hear your views on our plans, so look out for details in libraries, voluntary and community groups, our website, social media and virtual drop ins.

Please check out our online services at www.lambeth.gov.uk, where you can also pay a parking ticket, and make all other Lambeth payments at any location displaying the PayPoint sign, using the barcode on your bill. The nearest place is probably just down the road, visit www.consumer.paypoint.com to find out. If you need additional support call MyCommunity Gateway on **0333 360 3700**, Monday to Friday, 9am to 5pm, or email mycommunity@ageuklambeth.org

Stop the fraud

Due to the significant difference between private and council housing association rents fraudsters can make a lot of money by subletting council tenancies and preventing those in genuine need from accessing social housing.

Lambeth has a team of investigators who are dedicated to the prevention, detection and investigation of tenancy fraud. The Prevention of Social Housing Fraud Act 2013 made subletting a criminal offence punishable by up to two years imprisonment. The Act also allows local authorities to recover any profits made through subletting via unlawful profit orders.

During the three years to 31 March 2020 Lambeth investigators recovered 211 properties from persons committing tenancy fraud and prosecuted 7 individuals for unlawfully subletting their homes.

If you are aware of any fraud against the council, please report it. You can email investigations@lambeth.gov.uk, call **0207 926 1111** or visit lambeth.gov.uk/benefits-and-support/report-fraud

In LT July article on p.7 for the review of ward boundaries we published a historical map of Lambeth which should not be associated with the current proposal.

Feeling Safer



Lambeth Made Community is a series of forums that the council has been carrying out over the summer months which have given residents the opportunity to discuss community resilience. Councillors have attended the meetings, alongside community and voluntary organisations, and the focus has been on listening to residents and their concerns.

The meetings have been complemented by the launch of websites which allow residents to alert the council to issues in their ward – you can see an example at <https://vassall.commonplace.is/>

Community involvement in Lambeth Made Safer is essential. The new meetings will help meet that aim, as well as give residents, organisations and councillors the chance to

discuss other local concerns.

Lambeth Council's Cabinet Member for Jobs, Skills and Community Safety, Councillor Jacqui Dyer, leads the council's work with the community, the police, partners and the Mayor of London to combat crime in the borough. The council will be launching its Lambeth Made Safer strategy this autumn.



Repairs service is back

Housing responsive repairs service is back to full operations.

Over the period of the pandemic so far 26,800 repair requests have been issued to the council's contractors of which 12,000 involved emergency leaks or urgent loss of power.

Hundreds of fire risk assessment visits were done as well as works to hostels housing residents living in temporary accommodation.

Cllr Jennifer Brathwaite, Deputy Leader of the Council and Cabinet Member for Housing and Homelessness, comments:

"I want to thank our housing responsive repairs teams for their hard work during this crisis. They have shown real commitment, when people needed it most."

Back to work

Lambeth Adult Learning is helping residents or employees who have recently been made redundant. A personalised package of support includes a skills check, English, maths or IT, help in looking for work, and a national qualification in Health & Social Care, Business Admin, Childcare or Support for Teaching & Learning in Schools. If you have lost your job recently, find out more by emailing adultlearning@lambeth.gov.uk. New courses start in September and many are available at low cost or are free. Find out more at keeplondonlearning.com (click on Lambeth when you see the map).

Starting up? Start here!

If you are in the process of starting a business, Start-ups in London Libraries is here to give you the best grounding possible. All of the support that we have been offering in Lambeth Libraries, in partnership with the British Library's Business & IP Centre, is now available online. This includes workshops, one-to-ones and access to research databases.

If you have an idea, we're here to help make it happen.

Visit bl.uk/SiLL or email startupinlondonlibraries@lambeth.gov.uk



The cost of Covid-19 and building Lambeth's recovery

The coronavirus pandemic has had a significant financial impact on the council. Since March we've spent millions on supporting care homes, providing PPE, giving out millions to keep businesses going, making emergency transport changes to aid social distancing and delivering over 20,000 food packages to vulnerable people.

This extra spending has been essential but this has been combined with a huge fall in income from parking, business rates and council tax, due to lockdown measures.

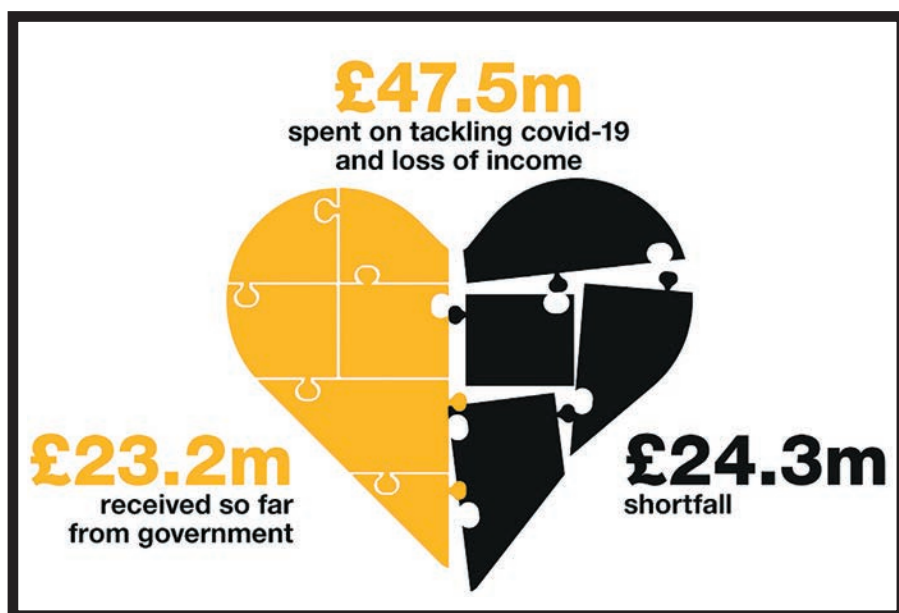
The government at the start of the pandemic said that councils would be fully funded and that we should spend whatever it takes to get through the public health

crisis. But so far, government funding covers less than half of the financial impact (£23.2m of a £47.5m budget shortfall).

The council's most cautious estimates are that Lambeth could face a £27m budget shortfall – potentially rising as high as £50m – as the country faces a recession and further uncertainty in the short and medium term. That's more

than what we spent on rubbish collection, parks, libraries, leisure centres, roads, children's centres and public health.

Lambeth Council has been supporting residents, businesses and the voluntary sector during this period of crisis. We will continue to do everything we can to help for as long as it is needed.



We have...

- delivered/dispached over 25k food parcels for vulnerable residents
- agreed £500k more funding for emergency support scheme and a £4.2m local economy hardship fund
- supported health and care providers to access PPE, advice and key worker testing
- secured 3 month rent relief for 318 businesses and Voluntary and Community Sector tenants
- delivered essential services.



To aid this recovery, the council's investment programme sets out an ambitious agenda of investment in jobs, homes, public infrastructure and tackling climate change.

We're able to invest this money because of prudent use of the council's resources and assets and good financial management over the last few years despite government cuts.

We are targeting areas that we know our residents value and prioritise, such as parks and open spaces, public transport, clean streets, affordable and

decent housing, protecting our environment and combating the climate crisis.

This programme will support ambitious economic plans for affordable workspace, good jobs and culture and leisure facilities in every part of the borough and will see record investment in making our area greener and in

digital infrastructure to address the gap in digital connectivity.

This programme as well as our ability to support our residents as we have done over the last few months, could be put at risk if the government doesn't keep its promises to fund local authorities for the work we've done to fight Covid-19.



£89m investment in our public realm, sustainable transport, highways enhancements, waste and recycling

£17m for green infrastructure to tackle the climate emergency



£25m for parks, libraries and archives

£9m on facilities for children and young people

£4m enhancing facilities that help house the homeless



£59m investment in affordable house building and affordable workspaces



£6m to support our Voluntary and Community Sector and improving leisure facilities

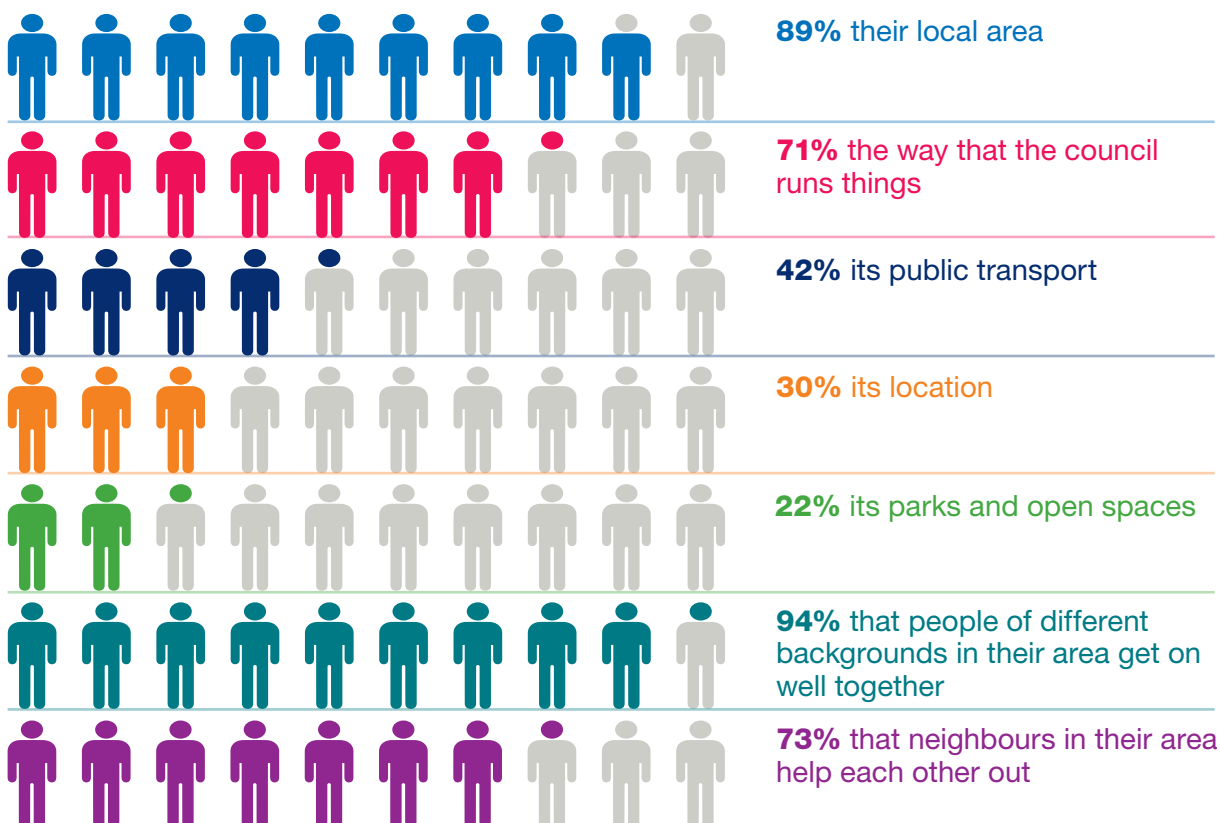
£2m investment for improving our health facilities

Lambeth Council regularly surveys residents in the borough about their attitudes to their local area, satisfaction with the council and various aspects of council services as part of the Residents' Survey. However, as the coronavirus (COVID-19) pandemic has been affecting residents in different ways, this year we also commissioned an additional survey to better understand how life has changed for our residents, how they are coping and how the council can effectively support residents as lockdown restrictions are eased.

Over 3,600 adults have been interviewed as part of the Residents' Survey 2020 and Lambeth Pulse Survey, ensuring that the opinions of a representative mix of residents have been collected on a range of current local issues.

Results from residents'

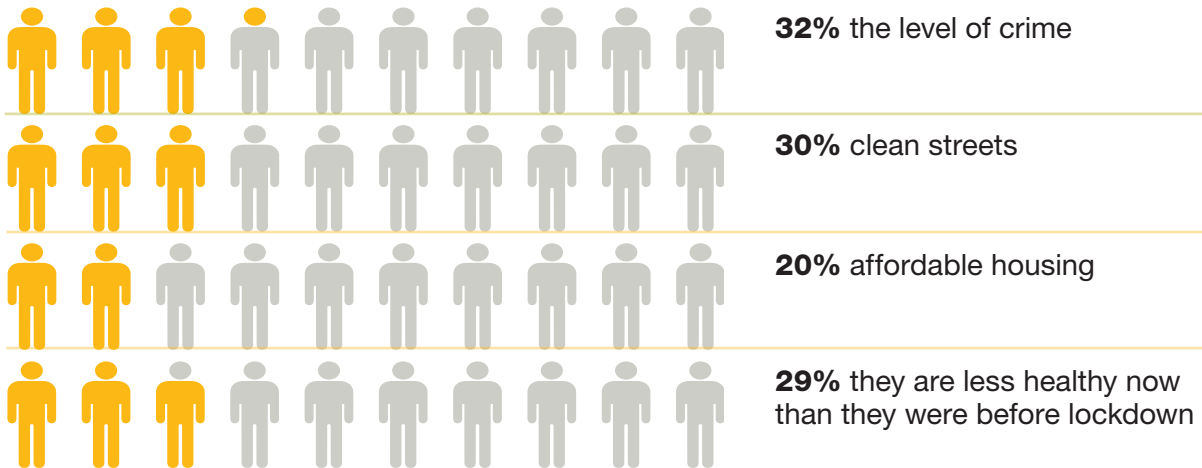
Results from the surveys show that when asked what **they like about living in Lambeth**, people said:





surveys

The surveys also show that when asked what **most needs improving in Lambeth**, people said:



A range of issues have been causing residents increased concerns and worry during the pandemic.

The most common include the wellbeing of children and/or other family members, losing a loved one to the virus, and personal mental health and wellbeing.

Residents feel less informed about the services and benefits that the council provides when compared to the last survey.

Given what we have learnt from the surveys and continue to understand about the disproportionate impacts of the coronavirus pandemic, we will be

hosting a range of Community Listening events.

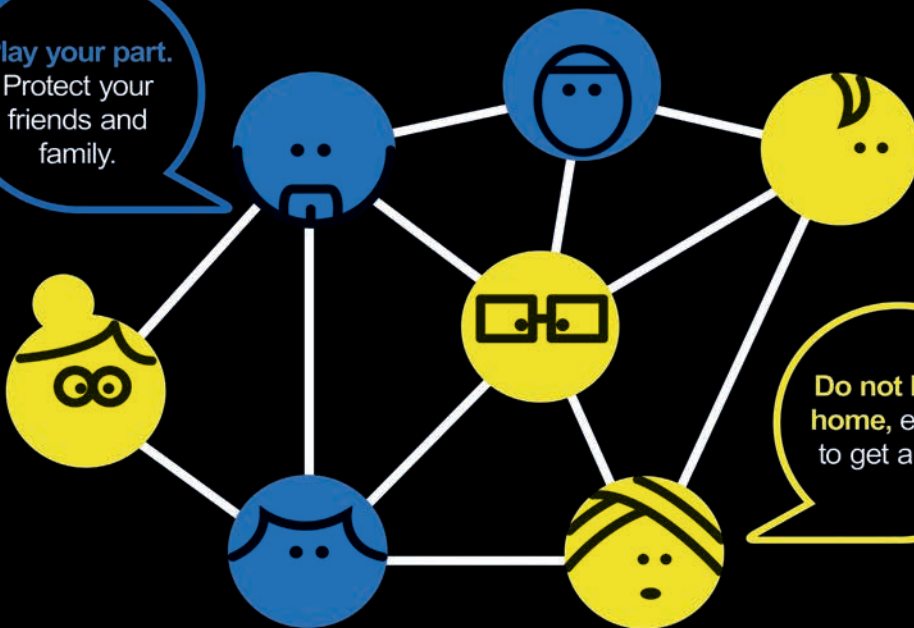
We are currently gathering views from young people across the borough and will report on these findings within the next few months.

ADVERTISEMENT



CORONAVIRUS GOT SYMPTOMS? GET TESTED NOW.

Play your part.
Protect your
friends and
family.



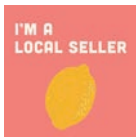
Do not leave
home, except
to get a test.

Find out how to get a test at
nhs.uk/coronavirus or call 119

Shop local



Your local shops need you! Last month Lambeth Council launched the Shop Safe, Shop Local campaign to support local high street businesses as they open their doors to welcome back customers once again.



Following strict guidelines around distancing and enhanced cleaning, many cafés, market stalls, shops and restaurants have now re-opened their doors after a long period of closure. So now is the time to get back out and shop and eat local, with hundreds of local businesses needing your support to survive.

The campaign features many familiar and well-loved shops and stalls around the borough, and will appear on high street banners and posters as well as online over the coming weeks, so look out for your favourite flower shop, bakery or hair dressers.

Local businesses such as **Tribe café** in Streatham who are open serving great food, coffees and smoothies. They have even adapted to the changing transport choices by opening up their basement as a pop up bike shop!

The **Old Post Office bakery** in Clapham have opened their doors with a strict one person at a time policy, opening at 7am to help cope with the customer queues but the delicious but reasonable cakes and bread are worth the short wait. If you, like many, have been making the most of the increased time at home by doing a few long overdue repairs or

DIY projects, instead of click and collect at the giant warehouses, why not try your local high street hardware shop such as **H&S Homecare** in West Norwood where you can chat to a real person rather than a chatbot and get helpful advice about the right tools for the job to prevent a DIY disaster!

So whatever your shopping need, please do put down that laptop or mobile phone, forget that online supermarket order with tricky delivery slot booking, and get back out to your high street and shop local!





Making our streets safer

We have a plan to make sure that Lambeth keeps moving, whilst making our streets safer and reducing the risk of Covid-19 transmission.

Whilst we are all being asked not to use public transport to help combat the virus, we need to ensure that we enable a recovery that prioritises cleaning up our air, reducing carbon emissions, and creating healthier, safer neighbourhoods for the people who live and work in Lambeth. We cannot replace one health crisis – that disproportionately impacts our more disadvantaged – with another.

That is why back in June, the council agreed its emergency transport programme in response to Covid-19 that will provide everyone with safe and accessible transport options.

We saw a huge increase in walking and cycling in Lambeth during lockdown as people felt

safer on our roads. However, as traffic levels increase, we need to take action to enable those people to continue. Each person that walks and cycles is one less person on our roads or on public transport whilst the risk of Covid-19 transmission remains.

We have already implemented three low traffic neighbourhoods in the Oval to Stockwell triangle, Ferndale and Railton areas and have four more in the pipeline in Tulse Hill, Brixton Hill, Streatham Hill and Streatham Wells wards.

We are also building safe walking and cycling infrastructure on some of our busier roads, including on Kennington Road, Loughborough Road and Rosendale Road. Delivering

these measures alongside Transport for London's projects planned for both the A3 and A23 mean that we will soon have a hugely improved walking and cycling network in Lambeth, so many more people feel safe enough to take advantage of clean, low carbon transport options.

Our emergency transport programme is being implemented using temporary materials and before making any of the measures permanent, we will undertake further engagement with those that live, work and travel through the area.

Find out more about Lambeth's emergency programme at lambeth.gov.uk/covid1tn

ADVERTISEMENT

School Streets

Walk, Cycle and Scoot to School.

Lambeth is looking to make the journey to school safer for pupils by launching School Streets.

Reclaiming spaces around the school gates will help families travel actively and aid social distancing for residents that live in the school community.

As schools return in September, School Streets will help to tackle congestion, improve air quality and encourage children and families to travel more actively.

Prioritising the health of children and families, School Streets will help to create more pleasant and safer environments outside of our schools.



For more information on School Streets please visit
[Lambeth.gov.uk/schoolstreets](https://lambeth.gov.uk/schoolstreets)
 Or search the **Love Lambeth blog** for more information


Lambeth

ADVERTISEMENT

STORIES from OUR STREETS

Your RECYCLING and rubbish HEROES

We can't thank Lambeth's waste collectors and street cleansing teams enough for the essential job they do every day, keeping our borough clean and safe. We spoke to the people on the frontline to find out how their daily life has changed during lockdown, what it's like to be recognised as key workers, and how you can do your bit to help.



Sebastien works on a rubbish collection round, and has worked in Lambeth for **13 years**.

'There's been less traffic on the roads which has made our rounds quicker.

People have been much more polite and helpful, saying hello and thank you, so it'd be nice if that continues. **My top tip for Lambeth residents would be to make sure they park their cars considerably so our vehicles can fit down the road.'**



Jose is a recycling collections driver, and has worked in Lambeth for **two years**.

'As a key worker, I've been more conscious about cleaning down after work so I can hug

my four year old daughter as soon as I get home! People have been saying thank you a lot more, and one resident in Norwood wrote us a letter and asked for a picture with us! **My top tip for Lambeth residents would be to put their bins out on time so we can collect them on time.'**



Piotr drives a pavement cleaning vehicle, and has worked in Lambeth for **14 years**.

'I work on my own when I'm out in my vehicle, which has helped me

to feel safe during lockdown. I haven't had much interaction with residents, but there's definitely been fewer people on the pavement, which makes it easier to keep them clean. **My top tip for Lambeth residents would be to not drop litter.'**

Paul works on a food and garden waste recycling round, and has worked in Lambeth for an amazing **35 years**.

'People have been out clapping when we're emptying their food waste bins, and I've noticed there's been more food and garden waste to collect!

My top tip for Lambeth residents would be to use food waste caddy liners so that food waste doesn't get stuck at the bottom of their bins.'



ADVERTISEMENT



Bill is a recycling collections driver, and has worked in Lambeth for almost **five years**.

'Being acknowledged for the job we do was really nice, we got lots of thumbs up and people

even clapped at us a few times. I noticed there was a lot more cardboard to collect from everyone's online orders. **My top tip to Lambeth residents would be to fold down cardboard boxes so more recycling can fit in your bin.'**

What can you do?

- Help brighten the day of your refuse collector or street sweeper with a smile and by saying thank you.
- Recycle right! Make sure you put the right thing in the right bin, so we can collect your bins on time and recycle as much as possible. **Go to lambeth.gov.uk/recycling to find out more.**

- Collecting the borough's recycling and waste can take time. Please be considerate to our key workers and be patient if you're behind one of our vehicles; we're working as quickly as we can!


yes please




no thanks



Did you know?

13% more rubbish was collected from Lambeth households during lockdown. How can you reduce the amount of rubbish you produce at home?

- Up to 75% of your household waste can be recycled, so make sure you're recycling as much as you can, including your food waste. Go to **lambeth.gov.uk/foodwaste** to order your free food waste bin.
- Reduce the amount of packaging you buy, such as buying fruit and vegetables loose.
- If you have young children under 18 months, give reusable nappies a go. You can apply for a free £40 voucher to get started, and making the switch from disposable nappies can save over **36kg of plastic**. Find out more at:

realnappiesforlondon.org.uk/lambeth

What can I RECYCLE?

ADVERTISEMENT

STORIES from OUR STREETS

Your LOCAL Community HEROES

With more time at home, a lot of Lambeth's residents have been getting to know their neighbours better and have become more active in their local community. How has lockdown brought us together, and what changes do we want to see stick around in future?

Florence, a Street Champion from Clapham

'I live on my own in a block of 28 flats where very few people knew each other. When lockdown started, we created a residents' support group and have been in touch about people's various needs (a printer, food or anything else) and improving our communal garden.

I also joined the Street Champions scheme and started litter picking in the Larkhall area SW8. This has grown to be a group of 35 volunteers who litter-pick the area every week. There's a lovely, friendly atmosphere and I now meet people I know in the street which is a great improvement. All

this has helped me feel a little bit more part of a community in an area of London where I know very few people.'



Celia, a Street Champion from Vauxhall

'I'm 76 and my husband is 79 with health problems, so we've been very much in lockdown, staying at home and doing online shopping. I recently joined the Street Champions scheme to be a point of contact for people on our street. I've had morning walks and admired the

planters we've installed as a community. I've phoned even more elderly neighbours and organised online movement classes for them. Another neighbour in the street does a once a week group video call for chats to help us all stay in touch.'

Nick, a Street Champion from Brixton

'I'm the Chair of our Resident's Association and during lockdown, I've become more aware of our respective situations, especially people who live alone and may appreciate a chat. I know lots of neighbours who have walked around the block together (socially distanced of course!) and chatted over the fence. Throughout lockdown we've been collecting crisp packets, oral care and beauty product packaging to be recycled as part of our Terracycle community scheme, which was supported by Veolia's Recycling Fund for Communities. I also did an eight week online course on environmental sustainability which kept me busy!'

Mike, a Street Champion from Streatham

'In my role as a Street Champion I've been out weeding our street with neighbours, and we've received lots of comments on how grateful residents are for all the work we do for the street generally, which is nice. We even had gifts of bottles of wine, cups of tea/coffee and fruit on route as we covered a small section

ADVERTISEMENT

of our road over a few weeks. Although both my wife Karen and I are in the vulnerable age category, we've still been able to help some of our local residents by delivering essential food or goods when we could.'

Diana, a resident from Kennington

'During lockdown I decided to do 30 days of litter picking to raise money for Guys and St Thomas' charity, as I'm 83 and I thought it'd be a manageable activity for me and my dog Dido. It was a great way to get out and have a positive impact on the local



environment. I met lots of lovely people along the way, and made friends with some of the local Veolia street cleaners. I'm thrilled to have raised over £2000, including a donation from Veolia's Recycling Fund for Communities. I usually visit the wards at Guys and St Thomas' as Dido is a patient therapy dog, so I'm glad I've still been able to support the' hospital despite not being able to visit.'



What can you do?

- If you're fed up of litter or wish your neighbourhood felt a bit friendlier, sign up to be a **Street Champion**. You'll receive support from Veolia and the council to find solutions to a range of local environmental issues, and create a stronger, happier community along the way. **Find out more at:**

lambeth.gov.uk/become-a-street-champion

- We're looking at how we can start our Freshview programme again (with safe social distancing in place). If your street or estate needs sprucing up, get in touch to register your interest in arranging a **Freshview** with your neighbours. Whether it's building planters for your pavements, giving front garden walls a fresh lick of paint or cutting back overgrown hedges, your street or estate will appreciate the attention! **Email:**

streetchampions@lambeth.gov.uk to find out more.

- Do you have a bright idea for a community project in Lambeth that could benefit the environment? Veolia's **Recycling Fund for Communities** can provide a cash boost of up to £2,000 to help bring your idea to life! If your project preserves resources, protects local environments, or helps a community group to bounce back from the pandemic, **visit:**

veolia.co.uk/london/recycling-fund-communities to apply.



Your health matters



Can you spot signs of
mental ill-health?

Free your mind

'Free Your Mind' for mental wellbeing

Online tools to support local people to take better care of their mental health during the Covid-19 pandemic are available from NHS South East London Clinical Commissioning Group (CCG).

The CCG's clinical lead for mental health, and a GP, Dr Nancy Kuchemann, said: "Covid-19 has had a profound effect on people's mental health, adding to existing worries and concerns – and magnifying them.

"We want people to know that the NHS and its partners are here for them. Our 'Free Your Mind' campaign will offer practical support, guidance and help and also give much-needed reassurance to those who are having a tough time."

Visit nhsfreeyourmind.co.uk

Get the flu vaccination, stay well and protect the NHS

The NHS is already starting to plan for winter. We are asking everyone who is at risk of being affected by the flu to get vaccinated this autumn. Having the flu vaccination will help protect yourself and others from what can be a severe, and sometimes fatal, illness which could lead to a hospital treatment. You will also be helping to protect the NHS from coming under pressure.

You should have the flu vaccine if you:

- are 65 years old or over
- are pregnant
- are an adult or child with certain conditions
- live with someone on the shielded patient list
- are aged 50-64 (vaccinations will be given later in the year for this group)
- are living in a care home or other long-stay facility
- receive a carer's allowance, or you're the main carer for an elderly or disabled person
- are aged 2-3
- are in primary school, or the first year of secondary school (Year 7)
- are a frontline health and social care worker.

The NHS will contact you directly if you are eligible, and will give you information about where to go to get the vaccine.

Become a foster carer, become a hero

Fostering for children in Lambeth means taking a child into your home and welcoming them into your family. This is likely to be at a difficult time when they really need a lot of love, support and stability. When you become a foster carer, you become a hero.

Eloise is one of Lambeth's long serving foster carers of 20 years – a wonderful example of a dedicated, single foster mum who looks after children aged 11 to 18 years old.

We asked her where it began. "I was inspired by a friend of mine who was a carer. I'll never forget one day, one of her children asked me if they could come and live with me. I said no, they asked me why not? Also my son kept asking if he could have a brother

or sister! He was around 12 at the time I started. He's now 32 and my back-up carer. Growing up with other children was a very positive experience for him and all my foster children see him as a big brother".

On fostering for Lambeth she explains: "There's so much support. You have the child's social worker, the London Foster Carer Association, the mentoring programme, our support group of other carers and the Team

Manager. You also have a back-up carer and can access respite for paid breaks. There's always lots of people you can reach out to."

Eloise says to anyone thinking of taking up fostering themselves:

"If you have a passion for children, go for it! You don't do it because it's easy, just like being a parent. You're enhancing your family and helping the next generation to be the best. And your own family just grows and grows".

Fostering Q&A Event

To find out more about fostering, join our online information event on Thursday 17 September at 7pm. Put your questions to our experienced team and meet other carers like Eloise who'll be there to talk about their experience. Visit lambeth.gov.uk/foster/events to reserve your place.

You can also call **020 7926 8710**, email fosteringduty@lambeth.gov.uk or arrange a call-back at lambeth.gov.uk/foster/callback





Look out for your annual canvass form!

Electoral Services have sent a canvass form to all residential properties in Lambeth to check voter details are correct.

Must I respond to the Canvass Notification?

You must respond if:

- Any information is incorrect on the form, or there are people eligible to register to vote at your address who are not included on the form

OR

- The notification you receive states that you must respond.

How can I respond?

The quickest and easiest way to respond is online at **householdresponse.com/lambeth**

You will need to enter the two-part security code which is also printed on the form. Anyone in the household can respond.

If you do not provide the requested information we may need to make a personal visit to your property to confirm voter details. Please help us save time and Council funds by responding to the form as quickly as possible.

Why is being Registered to Vote important?

- You can only vote at elections if you are registered.
- The electoral register is used for other important functions, including by credit reference agencies to help calculate your credit score.
- If your name is not on the register, you may not be able to get credit, a mortgage or a mobile phone contract.

For further details visit **lambeth.gov.uk/vote**

ADVERTISEMENT



Apply online and apply on time

Was your child born between 01/09/09 and 31/08/10?

If yes, your child should be starting secondary school in September 2021. If you are a Lambeth resident, you should apply for a school place using the safe, free and easy to use portal via our website, **lambeth.gov.uk/eadmissions**

It's available 24 hours a day, 7 days a week, up until the admissions closing date, which is midnight **Saturday 31 October 2020**. **If you apply after this date the likelihood of gaining a place at your preferred school may be significantly reduced.**

For more information see the Lambeth secondary transfer 2021/22 webpage via lambeth.gov.uk/eadmissions



101659 (8.20)





198 Gallery image of black people in Brixton. Thabo Jaiyesimi



Lambeth Heritage Festival

Lambeth Heritage Festival is back for 2020 and will run through the whole of September. This year's programme has been put together by Lambeth Archives with fantastic contributions from across the borough: local societies, museums, friends groups, galleries and heritage projects have all collaborated to create a really rich programme.

There are over 40 different events with something happening just about every week day evening and weekend afternoon through the month. The big difference this year is that all the events will be online. The programme includes virtual walks, archive film screenings, online talks, podcasts, virtual reality films, banner making and drawing workshops, discussion groups, virtual building tours and author interviews – hopefully something for almost everyone's taste.

Some of this year's highlights include: the 'Draw Lambeth' workshops combining historic building tours with on-line drawing, an interactive performance and community debate about the Windrush Generation, 'Music hall Wednesday' talks from a local project researching the music hall history of Brixton and beyond, pod-casts and virtual reality films made by young people with the Brixton Project and virtual tours behind the scenes of some of Lambeth's more unusual buildings

such as Van Gogh's house and the South London Botanical Institute. There is also a spectacular selection of online talks and virtual walks about black history, Lambeth's wildlife, Vauxhall Gardens and the National Theatre as well as local histories of chess, cycling, architecture and health – to list just a few.

You can access the full programme of events and register for your free event tickets at love.lambeth.gov.uk/heritage2020

Join dasl's new co-production group

We are looking for people from Lambeth to help us improve the use of Personal Health Budgets. Please join our group if you have experience of one or more of the following:

- Using a Personal Health Budget
- Using a Direct Payment
- Using Mental Health services, including people entitled to section 117 aftercare after being in hospital
- Supporting someone who uses services as a carer/relative
- Any other experience that you think might be relevant.

Co-production is a way of designing or improving services where everyone works together as equals, including people who use services, carers and professionals.

dasl will provide training on co-production and links to other co-production resources. We can also provide support to use IT resources.

Contact: Richard Pargeter
020 7501 8960 or direct.
payments@disabilitylambeth.org.uk



ADVERTISEMENT



Ready Steady Go!

FREE sessions to help families achieve a healthier diet and a more active lifestyle.

New courses will resume September 2020.

To register or make a referral please use our online link at lambeth.gov.uk/ready-steady-go

Contact the team on **020 7926 0619** or email readysteadygo@lambeth.gov.uk

MORE Life


Lambeth



**Do you have an idea for a project to help young children
in Coldharbour, Stockwell, Tulse Hill or Vassall?**

**Apply for a LEAP Community Award. Successful projects
will get up to £2,000 in funding. Good luck!**

Apply now: leaplambeth.org.uk/awards

Aim your project at children aged 0-3 and let your imagination run wild.

We'll be considering all kinds of ideas that:

- Help children and their families enjoy healthy meals or get active in fun ways.
- Help parents and babies strengthen their bonds, explore their feelings or share their experiences.
- Help children develop their speaking and communication skills through books, rhymes, songs or games.