

# Lambeth Local Plan 2015

Authority's Monitoring  
Report 2017/18

## Table of Contents

<b>Section</b>		<b>Page</b>
<b>1</b>	Introduction	<b>1</b>
<b>2</b>	Progress in implementing the Local Development Scheme	<b>1</b>
<b>3</b>	Neighbourhood planning	<b>2</b>
<b>4</b>	Community Infrastructure Levy	<b>2</b>
<b>5</b>	Duty to co-operate	<b>3</b>
<b>6</b>	Lambeth Local Plan 2015 monitoring framework: summary of performance in 2017/18	<b>3</b>
<b>7</b>	Data sources	<b>6</b>
<b>Appendices</b>		
<b>1</b>	Duty to co-operate activity	<b>11</b>
<b>2</b>	Carbon emissions in major schemes 2017/18	<b>30</b>
<b>3</b>	Lambeth waste figures 2017/18	<b>32</b>

## 1. Introduction

This authority's monitoring report for the London Borough of Lambeth has been prepared in accordance with Regulation 34 of the Town and Country Planning (Local Planning) (England) Regulations 2012 (as amended).

This report covers the financial year 2017/18 and contains monitoring information for the period to the end of March 2018.

This report includes information about:

- progress in implementing the local development scheme
- neighbourhood planning in Lambeth
- implementation of the Community Infrastructure Levy (CIL) in Lambeth
- the duty to co-operate
- performance against key monitoring indicators
- the sources of data used for the monitoring indicators.

The development plan for Lambeth over the monitoring period was the London Plan 2016 (consolidated with alterations since 2011) and the Lambeth Local Plan 2015. Monitoring information is provided in relation to the monitoring framework in Annex 08 of the Local Plan. The GLA publishes a separate London Plan annual monitoring report.

## 2. Progress in implementing the Local Development Scheme:

Lambeth published an updated local development scheme (LDS), agreed by Cabinet, on 09 October 2017.

Lambeth is currently undertaking a partial review of the Lambeth Local Plan 2015.

An initial round of public consultation on 'Issues' for the partial review of the Local Plan took place from 9 October to 4 December 2017, under regulation 18 of the Town and Country Planning (Local Planning) (England) Regulations 2012. The consultation provided an opportunity for stakeholders to identify what they thought were the key issues for the partial review of the Local Plan and how they should be tackled. Ten issues for the Local Plan review were identified for stakeholders to provide comments on. For each issue, a series of questions were asked. Stakeholders were also able to identify other issues they thought should be reviewed and to make comments on the initial Sustainability Appraisal. A full Consultation Report that summarises all of the responses received is viewable on the Lambeth [website](#).

### Development Viability SPD

Following the conclusion of a first round of consultation on the Draft Development Viability SPD in February 2017, a consultation statement was prepared which set out how the draft SPD was consulted on, a summary of the main issues raised and the Council's responses. This was published alongside the Revised Draft Development Viability SPD for a second stage of public consultation over 4 weeks from 5 April 2017 to 5 May 2017.

The Lambeth Development Viability SPD was adopted on 2nd October 2017. The SPD sets out the council's approach to assessing development viability in planning proposals and is viewable [online](#).

## Employment and Skills SPD

Following the conclusion of a first round of consultation on the Draft Employment and Skills SPD in February 2017, a consultation statement was prepared which set out how the Draft Employment and Skills SPD was consulted on, a summary of the main issues raised and the Council's responses. This was published alongside the Revised Draft Employment and Skills SPD for a second stage of public consultation over 4 weeks from 6 November 2017 to 4 December 2017.

The Lambeth Employment and Skills SPD was adopted on 5th February 2018. The SPD sets out the council's approach to securing appropriate contributions through Section 106 agreements towards employment and skills initiatives and is viewable [online](#).

### **3. Neighbourhood Planning**

Regulation 34 (4) of The Town and Country Planning Regulations 2012 requires that where a local planning authority have made a neighbourhood development order or a neighbourhood development plan, the local planning authority's monitoring report must contain details of these documents. The table below sets out the position with neighbourhood planning in Lambeth at the end of March 2018.

**Table 3: Neighbourhood planning in Lambeth March 2018**

<b>Forum/Area</b>	<b>Current position</b>
South Bank and Waterloo Neighbours (SoWN)	'South Bank and Waterloo Neighbours' was designated as a neighbourhood forum and a neighbourhood area by a decision of Cabinet on 10 February 2014. The area crosses the borough boundary into Southwark. A pre submission draft Neighbourhood Plan was published for consultation by the neighbourhood forum on 13 November 2016; the consultation ended in January 2017.
Kennington Oval Vauxhall Forum (KOVF)	The Kennington, Oval and Vauxhall (KOV) neighbourhood area and forum were designated 13 July 2015. Pre-submission consultation on a draft neighbourhood plan began in March 2018.
Tulse Hill Neighbourhood Forum	The Tulse Hill Neighbourhood Forum was designated as the forum for the Tulse Hill Neighbourhood Area (central) on 11 January 2016.
Norwood Planning Assembly	Neighbourhood forum and area designated July 2017.
Herne Hill Forum	Neighbourhood area designated December 2017. The area is partly in Lambeth and partly in Southwark.

### **4. Community Infrastructure Levy (CIL)**

The Lambeth CIL came into effect on 1 October 2014.

The CIL monitoring report required by Regulation 62 of the CIL Regulations 2010 (as amended) and Regulation 34 of the Town and Country Planning (Local Planning) Regulations 2012 was published at the end of 2017/18.

The full Section 106 Planning Obligations and the Community Infrastructure Levy year-end review reports for 2017/18 are available at the following link:

<https://www.lambeth.gov.uk/planning-and-building-control/section-106-planning-obligations-monitoring-reports>

## 5. Duty to co-operate

Under the duty to co-operate, as set out in section 33A of the Planning and Compulsory Purchase Act 2004, Lambeth engaged with prescribed public bodies during FY 2017/18. Please see appendix 1 for further details of this activity.

## 6. Lambeth Local Plan 2015 monitoring framework: summary of performance in 2017/18

Indicator	Source of Data	Target (if applicable)	Performance in 2017/18
IND 1 – Proportion of planning appeals allowed	Lambeth Planning and Development Division database	34%	41%
IND 2 - Plan period and housing targets	Lambeth Planning and Development Division residential development pipeline	2011/12 to 2026/27 – 1,195 per annum	See <a href="#">Lambeth Housing Development Pipeline Report 2017/18</a>
IND 3(a) – Net additional dwellings in previous years	Lambeth Planning and Development Division residential development pipeline	1,559 (London Plan)	See <a href="#">Lambeth Housing Development Pipeline Report 2017/18</a>
IND 3(b) – Net additional dwellings for the reporting year	Lambeth Planning and Development Division residential development pipeline	1,559 (London Plan)	See <a href="#">Lambeth Annual Position Statement: Housing Supply &amp; Delivery 2018</a>
IND 3(c) – Net additional dwellings in future years	Lambeth Planning and Development Division residential development pipeline	1,559 (London Plan)	See <a href="#">Lambeth Annual Position Statement: Housing Supply &amp; Delivery 2018</a>
IND 3(d) – Managed delivery target	Lambeth Planning and Development Division residential development pipeline	15,594 [2015-2025] (London Plan)	See <a href="#">Lambeth Annual Position Statement: Housing Supply &amp; Delivery 2018</a>
IND 4 – New and converted dwellings on previously developed land	Lambeth Planning and Development Division applications database	100%	100%

Indicator	Source of Data	Target (if applicable)	Performance in 2017/18
IND 5 – Net additional gypsy and traveller pitches	Lambeth Planning and Development Division records	Not applicable	0 pitches
IND 6 – Gross affordable housing completions	Lambeth Planning and Development Division residential development pipeline	50% of new build dwellings completed with grant 40% of new build dwellings completed without grant	See <a href="#">Lambeth Annual Position Statement: Housing Supply &amp; Delivery 2018</a> and <a href="#">Lambeth Housing Development Pipeline Report 2017/18</a>
		70:30 ratio of social rented to intermediate in new build affordable dwellings completed	See <a href="#">Lambeth Housing Development Pipeline Report 2017/18</a>
IND 7 – Proportion of completed homes with 3 or more bedrooms	Lambeth Planning and Development Division residential development pipeline	Not Applicable	See <a href="#">Lambeth Housing Development Pipeline Report 2017/18</a>
IND 8 – Gross additional wheelchair accessible homes completed	Lambeth Planning and Development Division residential development pipeline	10% (London Plan)	See <a href="#">London Plan AMR 15</a>
IND 9 - Net additional student bedspaces completed	Lambeth Planning and Development Division applications database	Not Applicable	See <a href="#">Lambeth Student Accommodation Assessment 2017/18</a>
IND 10 - New child play spaces created in completed residential developments	Lambeth Planning and Development Division residential development pipeline	Not Applicable	Data not currently available
IND 11 – Total amount of additional employment floor-space, by type	Lambeth Planning and Development Division commercial development pipeline	Not Applicable	See <a href="#">Lambeth Commercial Development Pipeline 2017/18</a>
IND 12 – Total amount of employment floor-space on previously developed land, by type	Lambeth Planning and Development Division commercial development pipeline	100%	100%
IND 13 – Employment land available, by type (measures the amount and type of employment land in the borough)	Lambeth Planning and Development Division commercial development pipeline	No net loss of employment land in KIBAs	See <a href="#">Lambeth Commercial Development Pipeline 2017/18</a>

<b>Indicator</b>	<b>Source of Data</b>	<b>Target (if applicable)</b>	<b>Performance in 2017/18</b>
IND 14 – Total amount of floorspace for ‘town centre uses’	Lambeth Planning and Development Division commercial development pipeline	Not Applicable	Full Information not available for 2017/18. See Lambeth’s latest <a href="#">Summary of Ground Floor Use Data</a>
IND 15 – Net additional serviced bedrooms (visitor accommodation)	Lambeth Planning and Development Division	Indicative estimate up to 2,000 between 2015 and 2036	See <a href="#">Lambeth Hotels and Other Visitor Accommodation 2017/18</a>
IND 16 – Walking mode share based on all trips originating in Lambeth	Lambeth Transport Plan monitoring returns to TfL	32% by 2026	See <a href="#">Information about the London Borough of Lambeth</a> published by TfL
IND 17 – Cycling mode share based on all trips originating in Lambeth	Lambeth Transport Plan monitoring returns to TfL	8% by 2026	See <a href="#">Information about the London Borough of Lambeth</a> published by TfL
IND 18 – Change in areas of biodiversity importance	Information provided by Lambeth Parks and Open Spaces, Environmental Services Division.	No net loss of metropolitan or borough level nature conservation importance	No change
IND 19 – Unrestricted open space per 1000 persons	Information provided by Lambeth Parks and Open Spaces, Environmental Services Division.	No net loss of open space	No net loss of open space
IND 20 – Parks with Green Flag awards	Information provided by Lambeth Parks and Open Spaces, Environmental Services Division.	Not applicable	15 Green Flag awards
IND 21 – Number of planning permissions granted contrary to Environment Agency advice on flooding and water quality grounds.	Information provided by the Environment Agency and Lambeth Planning and Development Division applications	Not applicable	4 out of 12 (one application is still pending consideration)
IND 22 - Carbon dioxide emissions in major developments	Lambeth Planning records	London Plan Target	See Environment section below
IND 23 – Capacity of new waste management facilities	Lambeth Waste records	Progress in meeting London Plan waste apportionment	No new waste management facilities
IND 23a – Amount of land available for additional waste	Lambeth commercial development pipeline and KIBA survey data	No less than 4 hectares	Reported separately in <a href="#">Lambeth Waste Evidence Base 2019</a>

Indicator	Source of Data	Target (if applicable)	Performance in 2017/18
management use in KIBAs			
IND 24 – Amount of municipal waste arising and managed, by management type	Lambeth Waste records	London Plan 2016 targets: exceed recycling/ composting levels in local authority collected waste (LACW) of 50 per cent by 2020	21%  See appendix 3 for further waste data.
IND 25 – Number of Heritage Assets on 'at risk' register	Lambeth Planning and Development Division records	Net decrease	42
IND 26 – Number of conservation areas with up to date character appraisals	Lambeth Planning and Development Division records	100%	13 out of 62 (21%)
IND 27 – Percentage of planning approvals for ten or more residential units receiving Secured by Design accreditation	Lambeth Community Safety Division records	100%	Data not currently available
Annual progress update on each of the places and neighbourhoods	Lambeth Planning and Development and Strategic and Neighbourhood Delivery Division records	Not applicable	See <a href="#">Lambeth Regeneration webpage</a>
Annual update of infrastructure schedule	Information provided by service and infrastructure agencies	Not applicable	See <a href="#">Lambeth Infrastructure Delivery Plan</a>

## 7. Data Sources

This section identifies the sources of data used to monitor performance against the indicators in the Local Plan 2015. Wherever possible, a hyperlink to the data source is provided so that further information can be found. Data is only reported in this document where it is not publically available elsewhere.

### Planning appeals

The below table sets out Lambeth's performance in planning appeals over the last ten years.



	08/09	09/10	10/11	11/12	12/13	13/14	14/15	15/16	16/17	17/18
Appeals Allowed	36	48	51	36	39	47	50	64	50	56
Appeals Dismissed	81	93	92	87	61	65	79	81	103	85
Mixed Outcome	4	5	1	4	0	1	6	1	2	2
Total Appeals	121	146	144	127	100	113	135	146	155	143
Allowed (%)	33	36	36	31	39	42	41	45	34	41

Source: Lambeth Planning Records

### Housing

Performance against indicators IND 2 is reported in the *Annual Position Statement: Housing Supply & Delivery* which includes Lambeth's housing trajectory and information about the five year supply of land for housing. The most recent version was published in October 2018. Performance against indicator IND 3 (a) and (b) and (c) for 2017/18 is reported in the Lambeth Housing Development Pipeline Report 2017/18. These figures are also reported in the *Annual Position Statement*.

Indicator IND 4 relates to new and converted dwellings on previously developed land. Other than protected open space, all land in Lambeth is previously developed. Unless open space is lost to housing, performance against this indicator will always be 100 per cent. Data is sourced from the London Development Database.

Headline performance against indicator IND 6 for 2017/18 is reported in tables 1 and 3 of [Lambeth Housing Development Pipeline Report 2017/18](#), and performance against local output indicator IND 7 is also reported in the same report.

Performance against indicator IND 8 is reported in the London Plan AMR.

Performance against indicator IND 9 can be found within the [Student Accommodation Pipeline Report 2017/18](#).

There is no data currently available on new child play spaces created in completed residential developments (IND 10). Data on approvals, rather than completions, for gross additional wheelchair accessible homes (IND 8) will be published in the London Plan AMR 15.

### Economic development

Performance against indicator IND 11 and IND 13 is reported in tables 1 and 3 of Lambeth's [Commercial Development Pipeline Report 2017/18](#).

Indicator IND 12 measures total amount of employment floorspace on previously development land. Other than protected open space, all land in Lambeth is previously developed. Performance against this indicator will always be 100 per cent, unless open space is lost for employment use. Data is sourced from the London Development Database.

A summary of the latest ground floor use data<sup>1</sup> in Lambeth's largest town centres is published on the Lambeth [website](#). The summary document provides the latest data in relation to indicator IND 14 - total amount of floorspace for 'town centre uses'.

Lambeth's [Hotels and Other Visitor Accommodation Report 2017/18](#) outlines progress against IND 15 net additional serviced bedrooms (visitor accommodation).

### Transport

Under Section 145 of the GLA Act 1999, each London borough is required to produce a Local Implementation Plan (LIP) setting out how it intends to contribute towards the implementation of the Mayor's Transport Strategy (MTS). As well as outlining the borough's local transport objectives, a LIP should detail the specific interventions and schemes intended to contribute towards meeting the MTS goals, challenges and opportunities. A clear strategy for monitoring performance should also be included.

As part of the process of monitoring LIPs, progress is tracked against seven strategic performance indicators on which boroughs are required to set locally specific targets. These seven indicators - mode share, bus service reliability, road traffic casualties, CO2 emissions and asset (highway) condition - all relate to key priorities within the MTS over which London boroughs have a degree of influence.

Data on progress towards indicators IND 15 and 16 is reported in TfL's [Travel in London Report 11](#). However for 2017/18, the data is only available at the regional level.

### Environment

The [Greenspace in Greater London \(GiGL\)](#) service provides data annually to the council on the status of areas of biodiversity importance (IND 18) and the quantity of open space in the borough (IND 19).

The following 15 parks in Lambeth have Green Flag awards:

- Archbishop's Park
- Brockwell Park
- Clapham Common
- Eardley Road Sidings Nature Reserve
- Hillside Gardens Park
- Kennington Park
- Milkwood Community Park
- Myatt's Fields Park
- Palace Road Nature Gardens
- Ruskin Park
- The Rookery, Streatham
- St. John's Churchyard, Waterloo
- St. Paul's Churchyard, Clapham
- Vauxhall Park
- West Norwood Cemetery

---

<sup>1</sup> Data provided by Experian - Lambeth commissions Experian Goad data annually for the five largest town centres in the borough in addition to the Lower Marsh/The Cut CAZ Frontage

Progress towards this indicator (IND 20) can be found at [London Green Flag Award Winning Sites](#).

In addition to the 15 Green Flag Award sites, four parks are Community Award winning sites:

- Brockwell Park Community Greenhouses
- Eden Community Garden
- Waterloo Green
- Windmill Gardens

Monthly and annual reports on Environment Agency objections to planning applications on flooding and water quality grounds are published on the [gov.uk](#) website. Objections are in some cases overcome, or applications are withdrawn. In Lambeth, 12 schemes were objected to in the 2017/18 financial year.

Lambeth employs consultants to review Carbon dioxide emissions in major developments in Lambeth. Policy 5.2 of the London Plan sets out a stepped approach to reaching zero carbon targets (as defined in section 5.2 of the [Mayor's Housing SPG](#)). For 2017/18 Bioregional reported on major applications' progress towards relevant emissions targets for major applications. These targets are as follows:

<b>Date Scheme received</b>	<b>Land Use Proposed</b>	<b>Relevant Target</b>
Schemes received by Lambeth on or after the 1st October 2016	Residential	Zero carbon
	Non-residential	As per building regulations requirements

To meet the zero-carbon target for major residential development, an on-site reduction of at least 35 per cent beyond the baseline of part L of the current Building Regulations is required. During the 2017/18 financial year, 26 major schemes were approved, including one major prior approval, one section 73 application and two variations of conditions. Four of these approved schemes proposed mixed use schemes. Data was available for 21 of the 26 approvals. 17 out of the 21 schemes are proposed to meet their target of a 35% reduction below Part L of the 2013 building regulations on site. For further information on the environmental performance of these schemes, see appendix 2.

### Waste

The council's [Waste Evidence Base 2019](#) provides information on indicators IND 23 capacity of new waste management facilities and amount of municipal waste arising and managed, by management type. Lambeth waste figures for 2017/18 are viewable in appendix 3. Data on progress towards indicators IND 24 is sourced from Lambeth waste service records.

### Quality of the built environment

Historic England's 'Heritage at Risk' register provides information about heritage assets at risk, by local authority area (IND 25).

The most up-to-date conservation area character appraisals (IND 26) are available on the council's conservation areas webpage. For the purposes of the monitoring indicator, 'up-to-date' means less than five years old.

The Metropolitan Police crime prevention design advisor service collates data on approved developments receiving Secured by Design accreditation (IND 27). Complete data was not available at the time of reporting.

### Planning obligations

The council publishes annual planning obligations monitoring reports (LOI 14), setting out s106 receipts and spend for each financial year. These are available from [Section 106 Planning Obligations monitoring reports](#).

### Places and neighbourhoods

The following updates are available on the council's website:

- Waterloo Supplementary Planning Document, Creating a Better Waterloo ([Better Waterloo page](#))
- Vauxhall
- Nine Elms/Battersea
- Brixton
- Clapham Old Town
- Clapham Common
- Stockwell Partnership
- Neighbourhood enhancement programme
- West Norwood
- Streatham

<https://www.lambeth.gov.uk/housing-and-regeneration/regeneration/regeneration-activity-in-lambeth>

### Infrastructure

The most up to date position on infrastructure is set out the [Lambeth Infrastructure Delivery Plan](#).

## Appendix 1: Duty to co-operate activity

### 1. Introduction

Paragraphs 24 to 27 of the NPPF 2018 set out government expectations for maintaining effective cooperation. They state that:

- Local planning authorities are under a duty to cooperate with each other, and with other prescribed bodies, on strategic matters that cross administrative boundaries
- Strategic policy-making authorities should collaborate to identify the relevant strategic matters which they need to address in their plans. They should also engage with their local communities and relevant bodies including Local Enterprise Partnerships, Local Nature Partnerships, the Marine Management Organisation, county councils, infrastructure providers, elected Mayors and combined authorities (in cases where Mayors or combined authorities do not have plan-making powers).
- Effective and on-going joint working between strategic policy-making authorities and relevant bodies is integral to the production of a positively prepared and justified strategy. In particular, joint working should help to determine where additional infrastructure is necessary, and whether development needs that cannot be met wholly within a particular plan area could be met elsewhere.
- In order to demonstrate effective and on-going joint working, strategic policymaking authorities should prepare and maintain one or more statements of common ground, documenting the cross-boundary matters being addressed and progress in cooperating to address these. These should be produced using the approach set out in national planning guidance, and be made publicly available throughout the plan-making process to provide transparency.

The Planning Practice Guidance adds that:

- The duty to cooperate requires local planning authorities and certain other public bodies to cooperate with each other in preparing a Local Plan, where there are matters that would have a significant impact on the areas of two or more authorities
- Certain other public bodies are also subject to the duty to cooperate. These are prescribed in the Town and Country Planning (Local Planning) (England) Regulations 2012 (as amended):
  - the Environment Agency
  - English Heritage (now called Historic England)
  - Natural England
  - the Mayor of London
  - the Civil Aviation Authority
  - the Homes and Communities Agency
  - Clinical Commissioning Groups
  - the National Health Service Commissioning Board (now NHS England)
  - the Office of Rail Regulation
  - Transport for London
  - each Integrated Transport Authority
  - Highway authorities
  - the Marine Management Organisation

- Local Enterprise Partnerships and Local Nature Partnerships are not subject to the requirements of the duty, but local planning authorities and county councils in England, and prescribed public bodies must cooperate with them. Local planning authorities must have regard to their activities when they are preparing their local plans, so long as those activities are relevant to plan-making.
- These organisations are required to cooperate with local planning authorities and county councils in England, and the other prescribed bodies. All parties should approach the duty in a proportionate way, tailoring cooperation according to where they can maximise the effectiveness of plans.
- A statement of common ground is a written record of the progress made by strategic policy-making authorities during the process of planning for strategic cross-boundary matters. It documents where effective co-operation is and is not happening throughout the plan-making process, and is a way of demonstrating at examination that plans are deliverable over the plan period, and based on effective joint working across local authority boundaries. In the case of local planning authorities, it also forms part of the evidence required to demonstrate that they have complied with the duty to cooperate.
- Statements should be prepared and then maintained on an on-going basis throughout the plan making process. As a minimum, a statement should be published when the area it covers and the governance arrangements for the cooperation process have been defined, and substantive matters to be addressed are determined. If all the information required is not available (such as details of agreements on strategic matters) authorities can use the statements to identify the outstanding matters which need to be addressed, the process for reaching agreements on these and (if possible) indicate when the statement is likely to be updated.

1.8 Local authorities are required to show how the duty is being taken forward on an on-going basis through the Authority's Monitoring Report (AMR).

## **2. Defining Lambeth's duty to cooperate bodies**

2.1 The local planning authorities that share borders with Lambeth are:

- City of London
- City of Westminster
- London Borough of Bromley
- London Borough of Croydon
- London Borough of Merton
- London Borough of Southwark
- London Borough of Wandsworth

2.2 For some of the other prescribed public bodies, there are particular circumstances in London, which need to be explained:

*Civil Aviation Authority*

There are no airfields within the borough of Lambeth. However, it is the Civil Aviation Authority's (CAA) and local Air Traffic Control centres' responsibility to ensure safe helicopter flights across London.

#### *Homes and Communities Agency*

The powers of the Homes and Communities Agency are devolved in London to the Mayor.

#### *Office of Rail Regulation*

Lambeth does not work directly with the Office of Rail Regulation, but has regular contact with Network Rail and the Train Operating Companies (SWT, Southeastern, Southern, Thameslink and London Overground).

#### *Integrated Transport Authority*

In London, the equivalent of the Integrated Transport Authority is Transport for London.

#### *Highway authorities*

In Lambeth, the highway authorities are Lambeth council or Transport for London, depending on the type of road.

#### *Marine Management Organisation (MMO)*

The MMO is the marine planning authority for England responsible for preparing marine plans for English inshore and offshore waters. At its landward extent, a marine plan will apply up to the mean high water springs mark, which includes the tidal extent of any rivers. In Lambeth, this applies to the river Thames.

#### *Local Enterprise Partnership*

The local enterprise partnership for London is the London Economic Action Panel (LEAP), chaired by the Mayor of London. The purpose of the LEP is to contribute to the delivery of the Mayor's economic development strategy, supported by strong local partnership arrangements.

#### *Local Nature Partnership*

In 2012 the nominal LNP for London was the All London Green Grid (ALGG), which acted in this capacity subject to a new and specific LNP being developed for Greater London. Eleven [ALGG Area Frameworks](#) were produced which expanded on the implementation points and strategic opportunities set out in the ALGG Supplementary Planning Guidance (SPG). These frameworks were produced by various All London Green Grid Area groups; the central area framework covers Lambeth, and the borough assisted in the development and refinement of these area frameworks where they were relevant to it.

However, the ALGG has since evolved to exist purely to promote the design and delivery of 'green infrastructure' across London, including biodiversity and open space provision, and it does not function as a LNP in its current role. The Greater London Authority acts as the owner of the ALGG, and the ALGG SPG and area frameworks can be obtained from the GLA [website](#).

This means that Greater London is without a LNP as of 2018, due to funding and other national policy constraints, and that responsibility for determining biodiversity and nature conservation policy at a local borough level rests with each London borough, although the Mayor of London still sets out regional policy which each borough then implements or applies through local actions.

Lambeth Council continues to actively cooperate with those statutory agencies and public bodies that would be an integral part of a Greater London LNP if it existed, not just on biodiversity but also green infrastructure and open spaces. This includes cooperating with other London boroughs, Greater London Authority, Environment Agency, Natural England, Network Rail and Port of London Authority, as and when required by national legislation or regional/local policy. It also cooperates with a wide range of non-governmental organisations that would also be members of a functional LNP such as London Wildlife Trust, RSPB and Woodland Trust, again as and when required to deliver local and regional policies.

Lambeth Council also continues to cooperate through the London Boroughs Biodiversity Forum (LBBF) and the Association for Local Government Ecologists (ALGE), which provide professional advice and information relating to biodiversity, green infrastructure and open spaces management; Lambeth is a full and active member of both bodies. Lambeth also liaises, via LBBF and ALGE, with officers having biodiversity, green infrastructure and open space management responsibilities in other local authorities that border Lambeth.

### 3. Formal partnerships

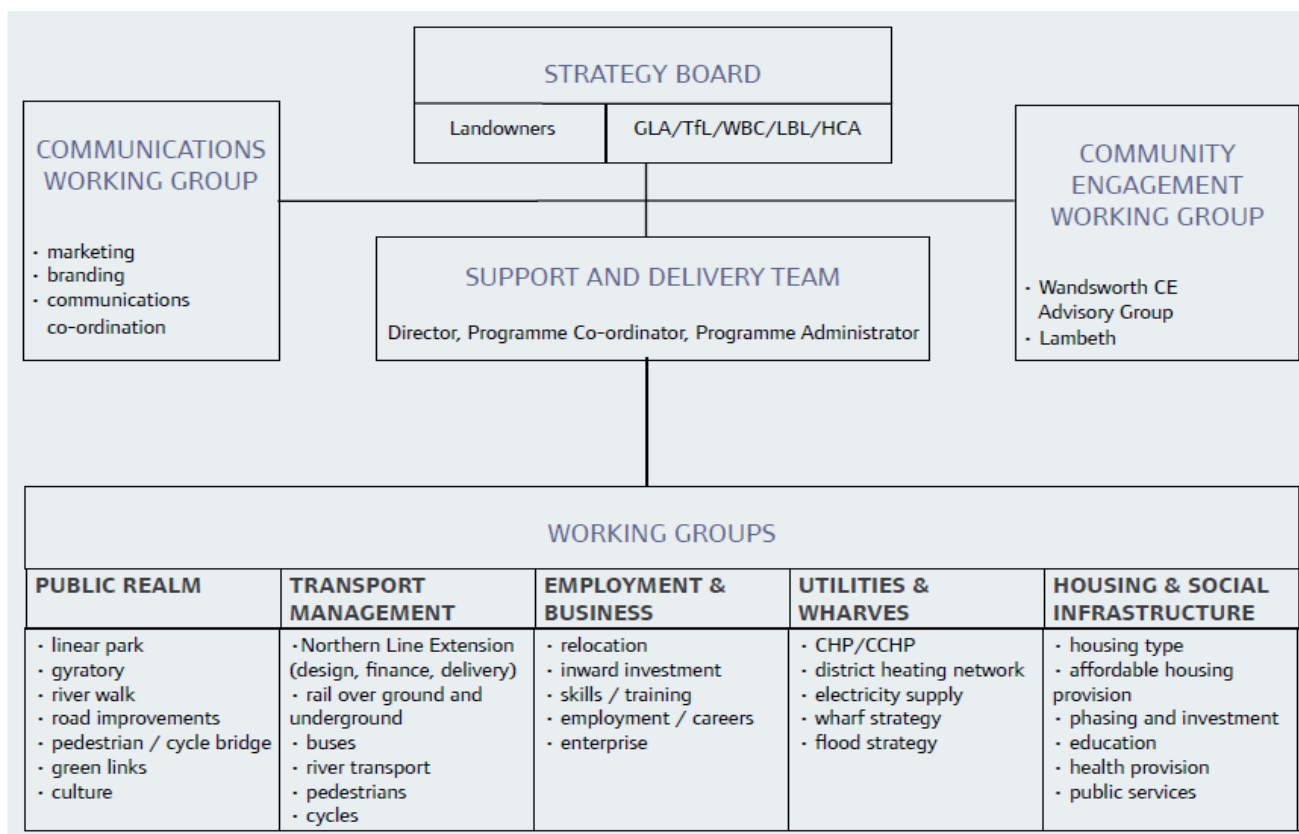
Lambeth is a member of various formally constituted sub-regional partnerships and working groups, which address cross-border strategic matters. These are described below.

**Central London Forward** represents the seven central London local authorities: Camden, City of London, Islington, Kensington and Chelsea, Lambeth, Southwark and Westminster. Its primary objectives are to influence policy on major issues affecting central London, promote the strategic importance and needs of central London, and identify and facilitate co-ordinated working on areas of mutual interest to partners

The **Cross-River Partnership** includes the central London boroughs along with business groups and other key stakeholders such as Network Rail, Groundwork London, London & Partners, Transport for London and the GLA. Its key focus is on economic growth, sustainable employment, carbon reduction and place-making.

The **Vauxhall Nine Elms Battersea Strategy Board** was established in 2009 to provide strategic leadership for the implementation of the Opportunity Area Planning Framework for Vauxhall Nine Elms Battersea (now known as Nine Elms Vauxhall). It is co-chaired by the leaders of Wandsworth and Lambeth councils and meets bi-monthly, as do subject-specific working groups. It is attended by major landowners, developers and officers of the public authorities. The following diagram shows the governance structure of the board.





In addition to the strategy board, Lambeth Council initiated the formation of a landowners group for Vauxhall in 2011. The group includes the major landowners within the Vauxhall area, is chaired by the leader of Lambeth Council and meets every three months to discuss issues related to development in Vauxhall.

The **South Bank Partnership** is jointly chaired by the two local MPs and includes the leaders and local members of the London boroughs of Lambeth and Southwark, together with business and community organisations. The South Bank Employers’ Group provides the secretariat for the partnership.

The **South Bank and Bankside Cultural Quarter** (SBBCQ) is a partnership consisting of 30 cultural organisations, local authorities including Lambeth, business improvement districts and universities. The partnership is director-led and meets approximately three times a year.

#### 4. Records of progress made during the process of planning for strategic cross-boundary matters

4.1 The following section provides a record of duty to cooperate activity between April 2017 and March 2018.

##### Prescribed bodies

- the Environment Agency

Officers in Lambeth’s planning policy team met with the Environment Agency (EA) in November 2017 to discuss Lambeth’s Local Plan review. Officers explained how Environment policies are likely to change and the EA provided some initial feedback. Officers also showed how the sustainability

appraisal feeds into the Local Plan review process and explained how Lambeth demonstrates transparency by creating a table of SA recommendations with officer responses.

The EA were notified and invited to make representations on Lambeth's initial regulation 18 'issues' stage of the local plan review in October 2017. The EA provided comments in relation to flood risk, contaminated land, water resources and quality, biodiversity and waste. The EA stated that they wished to see the Local Plan review aligning with the Environment Agency Thames Estuary Plan and that consideration should also be given to the Strategic Flood Risk Assessment, Preliminary Flood Risk Assessment, Environment Agency Flood Maps, Flood Risk Management Plan and Surface Water Management Plan. Summaries of the points raised by the Environment Agency are viewable in the Lambeth's [Issues Consultation Report October 2018](#).

In April 2017, Lambeth notified and invited the Environment Agency to make comments on Lambeth's Revised Draft Development Viability SPD. The Environment Agency stated in May 2017 that they have no further comments to add to their February 2017 response.

In April 2017, Lambeth notified and invited the Environment Agency to make comments on an application for the designation of the Norwood Planning Assembly Neighbourhood Forum and Neighbourhood Area. The EA provided comments in May 2017 stating that the proposed area boundary follows the valley of the culverted Effra River and therefore as the competent authority in respect of flood risk matters, the EA will provide information and data to guide development in the neighbourhood.

In July 2017, Lambeth notified and invited the EA to make comments on an application for the designation of the Herne Hill Forum Neighbourhood Forum and Neighbourhood Area. In September 2017, the EA provided comments - the culverted Effra River flows through the area in a northerly direction. The Herne Hill, Brixton and Norwood areas are impacted from upstream surface water flows from the London Boroughs of Southwark and Croydon, and it will therefore be important that the flood risk is managed at a catchment scale by all Councils.

In September 2017, Lambeth notified and invited the Environment Agency to make comments on Lambeth's updated initial screening assessment of the Draft Lambeth Development Viability SPD. Lambeth's opinion was that the Final Draft Lambeth Development Viability SPD would not have significant environment effects and therefore a full Strategic Environmental Assessment (SEA) would not be required. The Environment Agency responded and agreed with the findings of the SEA Screening Report.

In October 2017, Lambeth notified the Environment Agency and invited them to make representations on the submission version South Bank and Waterloo Neighbourhood Plan (SoWN) and Lambeth's addendum to the initial SEA screening assessment. The EA responded and agreed with the conclusion of the updated screening assessment that there are unlikely to be significant effects of the Plan and therefore a full SEA would not be necessary.

In October 2017, Lambeth officers notified the EA that they had produced a draft Basements SPD and invited the EA to provide comments. In December 2017, the EA stated that, overall, all aspects of their remit have been adequately addressed. The Flood and Water Management Act 2010 places the responsibility for surface water runoff, groundwater and ordinary watercourses with the Lead Local Flood Authority (LLFA). In this case, it is the London Borough of Lambeth.

In November 2017, Lambeth notified and invited the Environment Agency to make comments on Lambeth's Revised Draft Employment and Skills SPD. The Environment Agency provided comments in December 2017 and stated that they had no comments to make on the draft SPD.

In November 2017 Lambeth officers notified the EA that they had undertaken an initial SEA screening assessment of the draft Basements SPD and invited the EA to provide comments. The EA provided comments in February 2018, agreeing with the results of the council's initial SEA screening assessment which concluded that the draft Basements SPD is unlikely to have significant effects on the environment and so a full SEA will not be required.

In January 2018 Lambeth officers contacted the EA regarding their draft SEA screening assessment of the Lambeth Employment and Skills SPD and invited the EA to make representations. Officers asked the EA to confirm that it was unlikely the SPD would have significant environmental effects and therefore a full SEA is not required. The EA responded stating that they agreed that the Employment and Skills SPD proposed for adoption is unlikely to have significant environmental effects and a full SEA is not required.

In March 2018, on behalf of KOVF, Lambeth notified the Environment Agency and invited them to make representations on the pre-submission draft Kennington Oval and Vauxhall (KOV) Neighbourhood Plan. No representations were received.

- Historic England

Lambeth officers met with Historic England in November 2017. Updates to existing policies as part of the Local Plan review process were discussed as were potential ways forward with regard to managing development in areas of Lambeth that could impact on the Westminster World Heritage site. Policies in the draft London Plan were also analysed i.e. the design led approach.

Historic England were notified and invited to make representations on Lambeth's initial regulation 18 'issues' stage of the local plan review in October 2017. Historic England provided comments on the issues for the review of the Lambeth Local Plan and Sustainability Appraisal in December 2017. Summaries of the points made are viewable in Lambeth's [Issues Consultation Report 2018](#).

In April 2017, Lambeth notified and invited Historic England to make comments on Lambeth's Revised Draft Development Viability SPD. In May 2017, Historic England provided comments stating that they previously identified the need to integrate consideration of conservation requirements into assessments of viability where sites contain heritage assets requiring investment. Historic England advised that it will be helpful to highlight this aspect in Lambeth's heritage strategy to make this connection, if not in this document.

In April 2017, Lambeth notified and invited Historic England to make comments on an application for the designation of the Norwood Planning Assembly Neighbourhood Forum and Neighbourhood Area. HE replied in April 2017 and stated that if appointed, HE look forward to considering their neighbourhood area assessment that is anticipated to include due consideration of the built and buried heritage assets.

In July 2017, Lambeth notified and invited HE to make comments on an application for the designation of the Herne Hill Forum Neighbourhood Forum and Neighbourhood Area. In August 2017, HE provided comments stating that they normally advocate that Neighbourhood Plans should respect pre-defined boundaries such as those for conservation areas. This is because the boundaries of conservation areas should cover clearly defined character areas. As such respecting these

boundaries in the plan making process is important in ensuring a consistent application of planning policies for the historic environment. This in turn will better protect local character and identity from piecemeal change. HE also provided general advice on developing a Neighbourhood Plan.

In September 2017, Historic England were notified and invited to make comments on Lambeth's updated initial screening assessment of the Draft Lambeth Development Viability SPD. Lambeth's opinion was that the Final Draft Lambeth Development Viability SPD would not have significant environment effects and therefore a full SEA would not be required. No comments were received.

In October 2017, Historic England were notified and invited to make representations on the submission version SoWN Neighbourhood Plan and Lambeth's addendum to the initial SEA screening assessment. No comments were received.

In October 2017, Lambeth officers notified the HE that they had produced a draft Basements SPD and invited the HE to provide comments. In December 2017, HE provided comments and welcomed section 4 referring to assessment of impacts on heritage assets.

In November 2017, HE were notified and invited to make comments on Lambeth's Revised Draft Employment and Skills Planning Obligations SPD. In December 2017, HE replied by outlining that they had no further comments.

In November 2017 Lambeth officers contacted Historic England notifying them that Lambeth had undertaken an initial SEA screening assessment of the draft Basements SPD and invited them to provide comments. No comments were received.

In January 2018, Historic England were notified and invited to make representations on Lambeth's draft Screening Statement on its Employment and Skills SPD proposed for adoption. Historic England responded that month, agreeing with the conclusion of the screening report that SEA is not required.

In March 2018, on behalf of KOVF, Lambeth notified Historic England and invited them to make representations on the pre-submission draft KOV Neighbourhood Plan. No comments were received.

- Natural England

Natural England were notified and invited to make representations on Lambeth's initial regulation 18 'issues' stage of the local plan review in October 2017. No comments were received.

In April 2017, Lambeth notified and invited Natural England to make comments on Lambeth's Revised Draft Development Viability SPD. No comments were received.

In April 2017, Lambeth notified and invited Natural England to make comments on an application for the designation of the Norwood Planning Assembly Neighbourhood Forum and Neighbourhood Area. In May 2017 NE provided information sources that could be used in developing plans, and highlighted some of the potential environmental risks and opportunities that neighbourhood plans may present.

In July 2017, Lambeth notified and invited Natural England to make comments on an application for the designation of the Herne Hill Forum Neighbourhood Forum and Neighbourhood Area. In August 2017, NE provided information sources that could be used in developing plans, and highlighted some of the potential environmental risks and opportunities that neighbourhood plans may present.

In September 2017, Natural England were notified and invited to make representations on Lambeth's updated initial screening assessment of the Draft Lambeth Development Viability SPD. Lambeth's opinion was that the Final Draft Lambeth Development Viability SPD would not have significant environment effects and therefore a full SEA would not be required. Natural England responded by agreeing that no further full assessment would be required in this instance.

In October 2017, Lambeth notified Natural England and invited to make representations on the submission version SoWN Neighbourhood Plan and Lambeth's addendum to the initial SEA screening assessment. Natural England responded by stating that there are unlikely to be significant environmental effects from the proposed plan.

In October 2017, Lambeth officers notified NE that they had produced a draft Basements SPD and invited NE to provide comments. In November 2017, NE stated that whilst they welcomed the opportunity to give views, the topic of the Supplementary Planning Document does not appear to relate to their interests and so they did not wish to comment.

In November 2017, NE were notified and invited to make comments on Lambeth's Revised Draft Employment and Skills Planning Obligations SPD. In January 2018, NE stated that whilst they welcomed the opportunity to give views, the topic of the Supplementary Planning Document does not appear to relate to their interests therefore they had no further comments.

In November 2017 Lambeth officers notified NE and invited them to make comments an initial SEA screening assessment of the draft Basements SPD. No comments were received.

In January 2018, Natural England were notified and invited to make representations on Lambeth's draft Screening Statement on its Employment and Skills SPD proposed for adoption. Natural England responded in January 2018 stating that they had no further comments.

In March 2018, on behalf of KOVF, Lambeth notified Natural England and invited them to make representations on the pre-submission draft KOV Neighbourhood Plan. No comments were received.

Also see commentary above regarding Local Nature Partnerships.

- the Mayor of London

The Mayor was notified and invited to make representations on Lambeth's initial regulation 18 'issues' stage of the local plan review in October 2017. The GLA, on behalf of the Mayor, provided comments on Lambeth's initial issues consultation in autumn 2017. All of the Mayor's comments are viewable in Lambeth's [Issues Consultation Report 2018](#).

In April 2017, Lambeth notified and invited the Mayor to make comments on Lambeth's Revised Draft Development Viability SPD. No comments were received.

In April 2017, Lambeth notified and invited the Mayor to make comments on an application for the designation of the Norwood Planning Assembly Neighbourhood Forum and Neighbourhood Area. No comments were received.

In July 2017, Lambeth notified and invited the Mayor to make comments on an application for the designation of the Herne Hill Forum Neighbourhood Forum and Neighbourhood Area. No comments were received.

In October 2017, Lambeth notified the Mayor and invited him to make representations on the submission version SoWN Neighbourhood Plan. No comments were received.

In October 2017, Lambeth officers notified the Mayor that they had produced a draft Basements SPD and invited him to provide comments. No comments were received.

In November 2017, Lambeth notified and invited the Environment Agency to make comments on Lambeth's Revised Draft Employment and Skills SPD. The Environment Agency provided comments in December 2017 and stated that they had no comments to make on the draft SPD.

In December 2017, the Mayor notified and invited Lambeth to make representations on his draft London Plan 2017. In March 2018, Lambeth provided representations on the Mayor's Draft London Plan 2017.

In March 2018, on behalf of KOVF, Lambeth notified the Mayor and invited him to make representations on the pre-submission draft Kennington Oval and Vauxhall (KOV) Neighbourhood Plan. No representations were received.

- the Civil Aviation Authority

The CAA were notified and invited to make representations on Lambeth's initial regulation 18 'issues' stage of the local plan review in October 2017. No comments were received.

In April 2017, Lambeth notified and invited the Civil Aviation Authority (CAA) to make comments on Lambeth's Revised Draft Development Viability SPD. No comments were received.

In April 2017, Lambeth notified and invited the CAA to make comments on an application for the designation of the Norwood Planning Assembly Neighbourhood Forum and Neighbourhood Area. No comments were received.

In July 2017, Lambeth notified and invited the CAA to make comments on an application for the designation of the Herne Hill Forum Neighbourhood Forum and Neighbourhood Area. No comments were received.

In October 2017, Lambeth notified the CAA and invited them to make representations on the submission version SoWN Neighbourhood Plan. No comments were received.

In October 2017, Lambeth officers notified the CAA that they had produced a draft Basements SPD and invited them to provide comments. No comments were received.

In November 2017, Lambeth notified and invited the CAA to make comments on Lambeth's Revised Draft Employment and Skills SPD. No comments were received.

In March 2018, on behalf of KOVF, Lambeth notified the CAA and invited them to make representations on the pre-submission draft Kennington Oval and Vauxhall (KOV) Neighbourhood Plan. No representations were received.

- Lambeth Clinical Commissioning Group (CCG)

Lambeth Council continued to work with the CCG and other One Public Estate partners throughout 2017/2018 across both the funded projects and One Public Estate Partnership Board. Lambeth and CCG staff continued to co-chair the Board meetings. The CCG also attended the Lambeth First

Strategic Partnership Board ran by Lambeth Council. The Brixton Health Hub feasibility study, a key joint project undertaken by Lambeth Council and the CCG, was initiated in 2017/2018 and involved close working between the two bodies to determine accurate population growth figures to be used in forecasting healthcare demand and supply in the borough.

In April 2017, Lambeth notified and invited the CCG to make comments on Lambeth's Revised Draft Development Viability SPD. No comments were received.

In April 2017, Lambeth notified and invited the CCG to make comments on an application for the designation of the Norwood Planning Assembly Neighbourhood Forum and Neighbourhood Area. No comments were received.

In July 2017, Lambeth notified and invited the CCG to make comments on an application for the designation of the Herne Hill Forum Neighbourhood Forum and Neighbourhood Area. No comments were received.

In October 2017, Lambeth notified the CCG and invited them to make representations on the submission version SoWN Neighbourhood Plan. No comments were received.

In October 2017, Lambeth officers notified the CCG that they had produced a draft Basements SPD and invited them to provide comments. No comments were received.

In November 2017, Lambeth notified and invited the CCG to make comments on Lambeth's Revised Draft Employment and Skills SPD. No comments were received.

In March 2018, on behalf of KOVF, Lambeth notified the CCG and invited them to make representations on the pre-submission draft Kennington Oval and Vauxhall (KOV) Neighbourhood Plan. No representations were received.

- Transport for London

Lambeth continues to work in partnership with TfL, underpinned by joint funding of schemes within the borough to achieve shared goals. Monthly meetings take place between Lambeth officers from the highways, capital projects and transport teams regarding delivery local transport schemes focusing on walking, cycling, road safety and public realm improvements. Joint Delivery Group meetings happen each quarter to co-ordinate delivery of major changes to the road network such as Waterloo City Hub and Vauxhall Gyratory with attendance from senior officers, including directors. Ad-hoc meetings are also arranged to discuss improving accessibility on the tube and rail network and to discuss future improvements TfL are developing such as suburban rail metroisation and the extension of the Bakerloo Line. Lambeth meets quarterly with the City Planning team to discuss development related transport issues.

TfL were notified and invited to make representations on Lambeth's initial regulation 18 'issues' stage of the local plan review in October 2017. All of the TfL's comments on Lambeth's initial issues consultation are viewable in Lambeth's [Issues Consultation Report 2018](#).

In April 2017, Lambeth notified and invited TfL to make comments on Lambeth's Revised Draft Development Viability SPD. In May 2017, TfL provide comments - planning obligations are often secured to support site specific transport mitigation, as such it is requested that reference to Lambeth Local Plan policy T6 is inserted into paragraph 2.1. Within paragraph 2.2, reference should be made to s106 contributions being used where necessary to deliver increased public transport

capacity. This includes increased bus capacity, which isn't classed as infrastructure and as a result CIL cannot be used for this purpose. Referencing this will remove any ambiguity at the decision making stage.

In April 2017, Lambeth notified and invited TfL to make comments on an application for the designation of the Norwood Planning Assembly Neighbourhood Forum and Neighbourhood Area. In May 2017, TfL provided comments stating that they have no objections to the establishment of the Neighbourhood Area promoted by the Norwood Planning Assembly. TfL encouraged the organisation to contact them should their plans or proposals impact on TfL's assets or operations through the development of their plan in order to assist in the development of policies.

In July 2017, Lambeth notified and invited TfL to make comments on an application for the designation of the Herne Hill Forum Neighbourhood Forum and Neighbourhood Area. In September 2017, TfL stated they had no objection to the establishment of the Neighbourhood Area promoted by the Norwood Planning Assembly, and highlighted that they offer guidance for those involved neighbourhood planning process and liaison with London Boroughs and neighbourhood forums.

In October 2017, Lambeth notified TfL and invited them to make representations on the submission version SoWN Neighbourhood Plan. No comments were received.

In October 2017, Lambeth officers notified TfL that they had produced a draft Basements SPD and invited them to provide comments. No comments were received.

In November 2017, Lambeth notified and invited TfL to make comments on Lambeth's Revised Draft Employment and Skills SPD. No comments were received.

In March 2018, on behalf of KOVF, Lambeth notified TfL and invited them to make representations on the pre-submission draft Kennington Oval and Vauxhall (KOV) Neighbourhood Plan. No representations were received.

- the Marine Management Organisation

The Marine Management Organisation were notified and invited to make representations on Lambeth's initial issues consultation in autumn 2017. No comments were received.

In April 2017, Lambeth notified and invited the MMO to make comments on Lambeth's Revised Draft Development Viability SPD. No comments were received.

In April 2017, Lambeth notified and invited the MMO to make comments on an application for the designation of the Norwood Planning Assembly Neighbourhood Forum and Neighbourhood Area. No comments were received.

In July 2017, Lambeth notified and invited the MMO to make comments on an application for the designation of the Herne Hill Forum Neighbourhood Forum and Neighbourhood Area. No comments were received.

In October 2017, Lambeth notified the MMO and invited them to make representations on the submission version SoWN Neighbourhood Plan. No comments were received.

In October 2017, Lambeth officers notified the MMO that they had produced a draft Basements SPD and invited them to provide comments. No comments were received.



In November 2017, Lambeth notified and invited the MMO to make comments on Lambeth's Revised Draft Employment and Skills SPD. No comments were received.

In March 2018, on behalf of KOVF, Lambeth notified the MMO and invited them to make representations on the pre-submission draft Kennington Oval and Vauxhall (KOV) Neighbourhood Plan. No representations were received.

- Local Enterprise Partnership

The LEAP were notified and invited to make representations on Lambeth's initial issues consultation in October 2017. No comments were received.

In April 2017, Lambeth notified and invited the LEAP to make comments on Lambeth's Revised Draft Development Viability SPD. No comments were received.

In April 2017, Lambeth notified and invited the LEAP to make comments on an application for the designation of the Norwood Planning Assembly Neighbourhood Forum and Neighbourhood Area. No comments were received.

In July 2017, Lambeth notified and invited the LEAP to make comments on an application for the designation of the Herne Hill Forum Neighbourhood Forum and Neighbourhood Area. No comments were received.

In October 2017, Lambeth notified the LEAP and invited them to make representations on the submission version SoWN Neighbourhood Plan. No comments were received.

In October 2017, Lambeth officers notified the LEAP that they had produced a draft Basements SPD and invited them to provide comments. No comments were received.

In November 2017, Lambeth notified and invited the LEAP to make comments on Lambeth's Revised Draft Employment and Skills SPD. No comments were received.

In March 2018, on behalf of KOVF, Lambeth notified the LEAP and invited them to make representations on the pre-submission draft Kennington Oval and Vauxhall (KOV) Neighbourhood Plan. No representations were received.

## **5. Engagement with neighbouring boroughs**

- City of London

Lambeth officers met with fellow offices from the City of London as part of a joint meeting with LB Southwark and LB Tower Hamlets in September 2017. Each authority ran through progress towards reviewing their Local Plans. Boroughs also ran through respective existing policies on a number of topics including affordable housing, offices and tall buildings. Other topics discussed include neighbourhood planning, waste and article 4 directions.

The City of London were notified and invited to make representations on Lambeth's initial issues consultation in October 2017. The City provided comments in December 2017, stating that in relation to waste, any re-provision of waste sites outside Lambeth would need to be agreed through a pooling of the relevant London Plan waste apportionment targets so that London can meet its net-self-sufficiency target.

In April 2017, Lambeth notified and invited the City of London to make comments on Lambeth's Revised Draft Development Viability SPD. No comments were received.

In April 2017, Lambeth notified and invited the City of London to make comments on an application for the designation of the Norwood Planning Assembly Neighbourhood Forum and Neighbourhood Area. No comments were received.

In July 2017, Lambeth notified and invited the City of London to make comments on an application for the designation of the Herne Hill Forum Neighbourhood Forum and Neighbourhood Area. No comments were received.

In October 2017, Lambeth notified the City of London and invited them to make representations on the submission version SoWN Neighbourhood Plan. No comments were received.

In October 2017, Lambeth officers notified the City of London that they had produced a draft Basements SPD and invited them to provide comments. No comments were received.

In November 2017, Lambeth notified and invited the City of London to make comments on Lambeth's Revised Draft Employment and Skills SPD. No comments were received.

In March 2018, on behalf of KOVF, Lambeth notified the City of London and invited them to make representations on the pre-submission draft Kennington Oval and Vauxhall (KOV) Neighbourhood Plan. No representations were received.

- City of Westminster

Lambeth officers met with officers from Westminster twice – the first meeting took place in April 2017. Officers discussed findings of the emerging Westminster World Heritage Site setting study. All parties looked at the height constraints imposed on Lambeth, Westminster and Wandsworth by the existing LVMF protected silhouettes. Consequently, this identified areas without any current height limitation where potential harm could result from tall building construction. These areas comprise Westminster/ Camden / City of London fringe and Waterloo.

Officers met for a second time in September 2017. This meeting focussed on updated to Local plans including new policies on building heights and a potential resolution to WHS - new 'immediate setting' and 'approaches' protection layers. Boroughs also discussed potential housing figures derived from the new standard methodology as well as possible implication from part one of the brownfield land register. Existing work on and potential policy approaches to car parking, transport, flooding, hotels, affordable housing, short term lets and offices were also discussed. Respective approaches to dealing with waste were also discussed.

The City of Westminster were notified and invited to make representations on Lambeth's initial issues consultation in October 2017. No comments were received.

In April 2017, Lambeth notified and invited the City of Westminster to make comments on Lambeth's Revised Draft Development Viability SPD. No comments were received.

In April 2017, Lambeth notified and invited the City of Westminster to make comments on an application for the designation of the Norwood Planning Assembly Neighbourhood Forum and Neighbourhood Area. No comments were received.

In July 2017, Lambeth notified and invited the City of Westminster to make comments on an application for the designation of the Herne Hill Forum Neighbourhood Forum and Neighbourhood Area. No comments were received.

In October 2017, Lambeth notified the City of Westminster and invited them to make representations on the submission version SoWN Neighbourhood Plan. No comments were received.

In October 2017, Lambeth officers notified the City of Westminster that they had produced a draft Basements SPD and invited them to provide comments. No comments were received.

In November 2017, Lambeth notified and invited the City of Westminster to make comments on Lambeth's Revised Draft Employment and Skills SPD. No comments were received.

In March 2018, on behalf of KOVF, Lambeth notified the City of Westminster and invited them to make representations on the pre-submission draft Kennington Oval and Vauxhall (KOV) Neighbourhood Plan. No representations were received.

- London Borough of Bromley

No bi-lateral planning policy officer meetings during 2017/18.

Bromley were notified and invited to make representations on Lambeth's initial issues consultation in October 2017. No comments were received.

In April 2017, Lambeth notified and invited Bromley to make comments on Lambeth's Revised Draft Development Viability SPD. No comments were received.

In April 2017, Lambeth notified and invited Bromley to make comments on an application for the designation of the Norwood Planning Assembly Neighbourhood Forum and Neighbourhood Area. No comments were received.

In July 2017, Lambeth notified and invited Bromley to make comments on an application for the designation of the Herne Hill Forum Neighbourhood Forum and Neighbourhood Area. No comments were received.

In October 2017, Lambeth notified Bromley and invited them to make representations on the submission version SoWN Neighbourhood Plan. No comments were received.

In October 2017, Lambeth officers notified Bromley that they had produced a draft Basements SPD and invited them to provide comments. No comments were received.

In November 2017, Lambeth notified and invited Bromley to make comments on Lambeth's Revised Draft Employment and Skills SPD. No comments were received.

In March 2018, on behalf of KOVF, Lambeth notified Bromley and invited them to make representations on the pre-submission draft Kennington Oval and Vauxhall (KOV) Neighbourhood Plan. No representations were received.

- London Borough of Croydon

No bi-lateral planning policy officer meetings during 2017/18.

Croydon were notified and invited to make representations on Lambeth's initial issues consultation in October 2017. No comments were received.

In April 2017, Lambeth notified and invited Croydon to make comments on Lambeth's Revised Draft Development Viability SPD. No comments were received.

In April 2017, Lambeth notified and invited Croydon to make comments on an application for the designation of the Norwood Planning Assembly Neighbourhood Forum and Neighbourhood Area. In May 2017, Croydon provided comments which stated that any development related to the NPA Neighbourhood Forum should not cause tension with policies DM41 Norbury and DM43 Crystal Palace and Upper Norwood in the Croydon Local Plan: Detailed Policies and Proposals (Proposed Submission) and Policy SP1: The Places of Croydon in the Croydon Local Plan: Strategic Policies.

In July 2017, Lambeth notified and invited Croydon to make comments on an application for the designation of the Herne Hill Forum Neighbourhood Forum and Neighbourhood Area. No comments were received.

In October 2017, Lambeth notified Croydon and invited them to make representations on the submission version SoWN Neighbourhood Plan. No comments were received.

In October 2017, Lambeth officers notified Croydon that they had produced a draft Basements SPD and invited them to provide comments. No comments were received.

In November 2017, Lambeth notified and invited Croydon to make comments on Lambeth's Revised Draft Employment and Skills SPD. No comments were received.

In March 2018, on behalf of KOVF, Lambeth notified Croydon and invited them to make representations on the pre-submission draft Kennington Oval and Vauxhall (KOV) Neighbourhood Plan. No representations were received.

- London Borough of Merton

No bi-lateral planning policy officer meetings during 2017/18.

Merton were notified and invited to make representations on Lambeth's initial issues consultation in October 2017. No representations were received.

Lambeth were notified and invited to make representations on Merton's regulation 18 consultation on its New Local Plan in October 2017. In January 2018, Lambeth provided representations on the new Merton Local Plan.

In April 2017, Lambeth notified and invited Merton to make comments on Lambeth's Revised Draft Development Viability SPD. No comments were received.

In April 2017, Lambeth notified and invited Merton to make comments on an application for the designation of the Norwood Planning Assembly Neighbourhood Forum and Neighbourhood Area. No comments were received.

In July 2017, Lambeth notified and invited Merton to make comments on an application for the designation of the Herne Hill Forum Neighbourhood Forum and Neighbourhood Area. No comments were received.

In October 2017, Lambeth notified Merton and invited them to make representations on the submission version SoWN Neighbourhood Plan. No comments were received.

In October 2017, Lambeth officers notified Merton that they had produced a draft Basements SPD and invited them to provide comments. No comments were received.

In November 2017, Lambeth notified and invited Merton to make comments on Lambeth's Revised Draft Employment and Skills SPD. No comments were received.

In March 2018, on behalf of KOVF, Lambeth notified Merton and invited them to make representations on the pre-submission draft Kennington Oval and Vauxhall (KOV) Neighbourhood Plan. No representations were received.

- London Borough of Southwark

Lambeth officers met with LB Southwark officers in July 2017. Southwark explained proposals in their proposed Local Plan (Proposed Area Visions and Site Allocations). Lambeth officers provided initial comments and informed LBS that they would be making representations on draft Sites and Visions DPD and Gipsy Hill Paper. Southwark also gave an update on their new Health Action Plan coming forward for Old Kent Road and their new social regeneration agenda. Lambeth also provided an update with regards to their own Local Plan review. Development proposals for Crystal Palace Park were also discussed as was the proposed neighbourhood planning area designation application at Herne Hill. LBL and LBS agreed to coordinate a response to HNF and agreed a joint timetable.

The two boroughs had ongoing engagement around the emerging draft SoWN Neighbourhood Plan which crosses the borough boundary between the two parties. The two boroughs also had ongoing engagement around the designation of the Herne Hill neighbourhood forum and neighbourhood area which crosses the borough boundary between the two parties.

Southwark were notified and invited to make representations on Lambeth's initial issues consultation in October 2017. No representations were received.

In April 2017, Lambeth notified and invited Southwark to make comments on Lambeth's Revised Draft Development Viability SPD. No comments were received.

In April 2017, Lambeth notified and invited Southwark to make comments on an application for the designation of the Norwood Planning Assembly Neighbourhood Forum and Neighbourhood Area. No comments were received.

In July 2017, Lambeth notified and invited Southwark to make comments on an application for the designation of the Herne Hill Forum Neighbourhood Forum and Neighbourhood Area. No comments were received.

In October 2017, Lambeth notified the Southwark and invited them to make representations on the submission version SoWN Neighbourhood Plan. No comments were received.

In October 2017, Lambeth officers notified Southwark that they had produced a draft Basements SPD and invited them to provide comments. No comments were received.

In November 2017, Lambeth notified and invited Southwark to make comments on Lambeth's Revised Draft Employment and Skills SPD. No comments were received.

In March 2018, on behalf of KOVF, Lambeth notified Southwark and invited them to make representations on the pre-submission draft Kennington Oval and Vauxhall (KOV) Neighbourhood Plan. No representations were received.

In December 2017, Lambeth were notified and invited to make representation on the New Southwark Plan Proposed Submission Version. Lambeth provided comments in December 2017. All of Lambeth's comments on the New Southwark Plan Proposed Submission Version are viewable in the [Statement of Common Ground between London Borough of Lambeth and London Borough of Southwark December 2019](#).

- London Borough of Wandsworth

Lambeth officers met with officers from Wandsworth in May 2017. LBW provided update on its Employment & Industry Local Plan Review: Regulation 19 consultation which included policies and site allocations, and gave an explanation of the previous two (Regulation 18) stages. Also provided SHLAA update. LBW confirmed that safeguarded wharves and waste policies were not part of this review and will only be amended to ensure consistency with the new policies. LBL provide an overview of employment policies, review of KIBAs and new Development Viability SPD. LBL also provide overview of upcoming issues consultation. Cross boundary town centres, gypsy and traveller provision and policy approaches to pubs were also discussed. Both boroughs to review the GLA's town centre health check report once it's published, particularly regarding the hierarchy conclusions of those centres in both boroughs. Borough confirm proposed memorandum of understanding between boroughs within the Western Riverside Waste Authorities area is in progress.

Officers from both boroughs met again in March 2018. Boroughs provide update on their respective Local Plan reviews and LBW Local Plan: Employment and Industry DPD (anticipate adoption in December). Councils to consider implications of planning for waste on their own in addition to joint working. Boroughs discuss town centre classifications as proposed in the draft London Plan. Officers discuss the government's definition and the Mayor's proposed definition of Gypsies and Travellers. Lambeth evidence relates to the government definition and so could be a potential issue if the Mayor's definition is eventually adopted.

Both authorities continue to work collaboratively through the Nine Elms Vauxhall Partnership which coordinates and drives forward the transformation of the VNEB OA. Co-chaired by the leaders of Wandsworth and Lambeth Council, it includes the area's main developers and landowners, the Mayor of London, Transport for London and the Greater London Authority. It is responsible for setting and delivering the strategic vision for the area, including the £1 billion infrastructure investment package.

Wandsworth were notified and invited to make representations on Lambeth's initial issues consultation in October 2017. In December 2017, Wandsworth submitted comments to Lambeth as part of the Issues consultation. Of all of the questions answered, Wandsworth only disagreed with one which regarded the provision of short term lets, such as Airbnb, and their ability to meet demand for visitor accommodation. Wandsworth stated that the growing gap between demand and supply does not justify losing permanent housing. They supported use of student halls out of term time. A full breakdown of the comments provided by Wandsworth is viewable in Lambeth's [Issues Consultation Report 2018](#).

In April 2017, Lambeth notified and invited Wandsworth to make comments on Lambeth's Revised Draft Development Viability SPD. No comments were received.

In April 2017, Lambeth notified and invited Wandsworth to make comments on an application for the designation of the Norwood Planning Assembly Neighbourhood Forum and Neighbourhood Area. No comments were received.

In July 2017, Lambeth notified and invited Wandsworth to make comments on an application for the designation of the Herne Hill Forum Neighbourhood Forum and Neighbourhood Area. No comments were received.

In October 2017, Lambeth notified Wandsworth and invited them to make representations on the submission version SoWN Neighbourhood Plan. No comments were received.

In October 2017, Lambeth officers notified Wandsworth that they had produced a draft Basements SPD and invited them to provide comments. No comments were received.

In November 2017, Lambeth notified and invited Wandsworth to make comments on Lambeth's Revised Draft Employment and Skills SPD. No comments were received.

In March 2018, on behalf of KOVF, Lambeth notified Wandsworth and invited them to make representations on the pre-submission draft Kennington Oval and Vauxhall (KOV) Neighbourhood Plan. No representations were received.

### **Waste planning authorities**

Lambeth lies with the 'Western Riverside' area of London and is one of five authorities that make up the Western Riverside Waste Authority (WRWA) responsible for disposal of household waste. Duty to co-operate activity with regard to waste, including a full account of the engagement on waste planning between the five authorities is outlined in the [Lambeth Waste Evidence Base 2019](#).

**Appendix 2: Carbon emissions in major schemes 2017/18**

<b>Major</b>	<b>Type</b>	<b>Element of proposal</b>	<b>Estimated emissions (tonnes CO2/yr, Part L Building Regulations)</b>	<b>Estimated emissions (tonnes/CO2/yr, National Calculation Method)</b>	<b>Total emissions saving (tonnes/CO2/yr)</b>	<b>Achieves at least a 35 per cent reduction in regulated carbon dioxide emissions on-site</b>	<b>Total cash in lieu (per annum)</b>
15/04010/FUL	Full	Residential	37.242	23.500	13.742	36.90	n/a
16/00795/FUL	Full	Residential	411.900	284.000	127.900	31.05	n/a
16/02387/FUL	Full	Commercial	176.029	110.068	65.961	37.47	n/a
16/02973/FUL	Full	Commercial	2880.000	1053.000	1827.000	63.44	n/a
16/03367/FUL	Full	Commercial	35.400	23.000	12.400	35.03	n/a
16/05114/FUL	Full	Residential	340.000	205.000	135.000	39.71	n/a
		Commercial	55.000	35.000	20.000	36.36	n/a
16/05183/FUL	Full	Residential	17.854	11.513	6.341	35.52	n/a
16/05309/VOC	Full	Residential	928.500	534.500	394.000	42.43	n/a
		Commercial	423.480	302.854	120.626	28.48	n/a
16/05513/FUL	Full	Residential	16.664	10.808	5.856	35.14	n/a
16/05628/FUL	Full	Residential	20.905	10.942	9.963	47.66	n/a
16/06053/FUL	Full	Commercial	179.700	113.900	65.800	36.62	n/a
16/06169/FUL	Full	Residential	17.983	11.543	6.440	35.81	£20,777
16/06520/FUL - NO INFO	Full	Commercial			0.000		
16/06668/FUL	Full	Residential	75.366	39.591	35.775	47.47	£71,580
		Commercial	51.019	41.866	9.153	17.94	£15,660
16/07054/FUL	Full	Commercial	110.445	72.140	38.305	34.68	n/a
16/07154/FUL	Full	Residential	13.700	8.800	4.900	35.77	£15,840
17/00311/FUL	Full	Commercial	205.732	127.958	77.774	37.80	n/a
17/00605/FUL	Full	Residential	409.718	219.419	190.299	46.45	£394,954



		Commercial	179.172	91.079	88.093	49.17	n/a
17/01473/FUL	Full	Commercial	71.354	45.886	25.468	35.69	n/a
17/02304/VOC	Full	Commercial	107.500	61.300	46.200	42.98	n/a
17/03194/FUL	Full	Commercial	24.420	18.480	5.940	24.32	n/a
17/03272/FUL - NO INFO	Full	Commercial			0.000		
17/03271/P3O - NO INFO	Prior Approval (Class O - formerly J)	Residential			0.000		
17/01047/NMC - N/A - Granted in 2011	S73 Minor Material Amendment	Commercial (sui generis)			0.000		
16/01650/OUT - NO INFO	Outline	Residential			0.000		
17/00527/RG3	Outline	Commercial	19.600	4.300	15.300	78.06	n/a

	<b>Emissions (t/CO2/yr)</b>	<b>Savings (t/CO2/yr)</b>	<b>Cash-in-lieu</b>
Total (major)	3460.447	3348.236	
Emissions (resi)	1359.616	930.216	£518,812
Emissions (non-resi)	2100.831	2418.020	

### Appendix 3: Lambeth waste figures 2017/18

Quarter	Total diverted	LACMW	Total % recycled
Q1	6,290.38	29,708.48	21.17%
Q2	6,008.44	29,989.21	20.04%
Q3	6,177.51	29,780.52	20.74%
Q4	5,911.52	27,642.94	21.39%
Q1&2	12,298.82	59,697.69	20.60%
Q1,2&3	18,476.33	89,478.22	20.65%
Q1,2,3&4	24,387.85	117,121.16	20.82%